

BILL NO. 3517

ORDINANCE NO. 3306

**AN ORDINANCE PROVIDING FOR THE APPROVAL OF A BOUNDARY ADJUSTMENT PLAT FOR LOT B-2, LOT C, AND LOT D OF LONG ROAD CROSSING SUBDIVISION TOTTALLING 6.18-ACRES AREA OF LAND LOCATED WEST OF LONG ROAD CROSSING WESTBOUND (17U410104).**

**WHEREAS**, Stock & Associates Consulting Engineers, Inc. on behalf of Kehr Development, LLC has submitted for review and approval a Boundary Adjustment Plat for Lots B-2, C, and D of Long Road Crossing Subdivision, located west of Long Road Crossing westbound; and,

**WHEREAS**, the purpose of the Boundary Adjustment Plat is to replat the boundary lines of three parcels into two parcels; and,

**WHEREAS**, the Department of Planning has reviewed the Boundary Adjustment Plat in accordance with the Unified Development Code of the City of Chesterfield and has found it to be in compliance with all applicable ordinances and has forwarded said Boundary Adjustment Plat to the City Council.

**NOW THEREFORE BE IT ORDAINED BY THE CITY COUNCIL OF THE CITY OF CHESTERFIELD, ST. LOUIS COUNTY, MISSOURI, AS FOLLOWS:**

**Section 1.** The Boundary Adjustment Plat which is attached hereto as "Exhibit 1" and made part hereof as if fully set out herein is hereby approved; the owner is directed to record the plat with the St. Louis County Recorder of Deeds Office.

**Section 2.** The Mayor and City Clerk are authorized and directed to evidence the approval of the said Boundary Adjustment Plat by affixing their signatures and the official seal of the City of Chesterfield as required on the said document.

**Section 3.** The Ordinance shall be in full force and effect from and after its passage and approval.

Passed and approved this 3rd day of September, 2024.

Bob Nation  
PRESIDING OFFICER

Bob Nation  
Bob Nation, MAYOR

ATTEST:

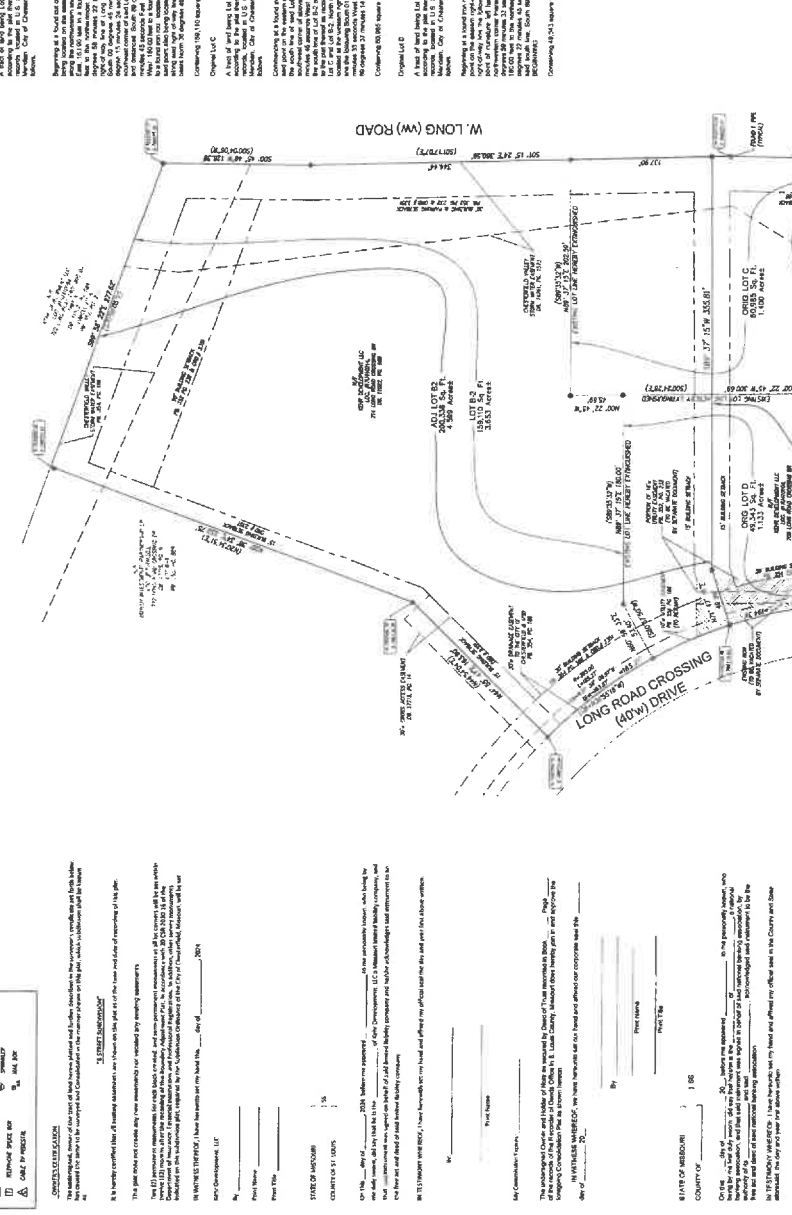
Vickie McGownd  
Vickie McGownd, CITY CLERK

FIRST READING HELD: 09/03/2024

# B STREET SUBDIVISION

## A BOUNDARY ADJUSTMENT FLAT OF LOT B-2 OF 722 LONG ROAD CROSSING MINOR SUBDIVISION FLAT PER PLAT BOOK 355, PAGE 888 AND LOTS C AND D OF THE REBUBBISON OF LOT 4 PER PLAT BOOK 354, PAGE 190, LOCATED IN U.S. SURVEY 110, T49N, R.9E, OF THE 5TH P.M. CITY OF CHESTERFIELD, ST. LOUIS COUNTY, MISSOURI

- LEGEND**
- 3/4" = 1' (GRAPHIC SCALE)
  - 1" = 10' (GRAPHIC SCALE)
  - 1" = 20' (GRAPHIC SCALE)
  - 1" = 40' (GRAPHIC SCALE)
  - 1" = 80' (GRAPHIC SCALE)
  - 1" = 160' (GRAPHIC SCALE)
  - 1" = 320' (GRAPHIC SCALE)
  - 1" = 640' (GRAPHIC SCALE)
  - 1" = 1280' (GRAPHIC SCALE)
- PROPERTY DESCRIPTIONS**
- Lot 1: 1.000 Acres
  - Lot 2: 1.000 Acres
  - Lot 3: 1.000 Acres
  - Lot 4: 1.000 Acres
  - Lot 5: 1.000 Acres
  - Lot 6: 1.000 Acres
  - Lot 7: 1.000 Acres
  - Lot 8: 1.000 Acres
  - Lot 9: 1.000 Acres
  - Lot 10: 1.000 Acres
  - Lot 11: 1.000 Acres
  - Lot 12: 1.000 Acres
  - Lot 13: 1.000 Acres
  - Lot 14: 1.000 Acres
  - Lot 15: 1.000 Acres
  - Lot 16: 1.000 Acres
  - Lot 17: 1.000 Acres
  - Lot 18: 1.000 Acres
  - Lot 19: 1.000 Acres
  - Lot 20: 1.000 Acres
  - Lot 21: 1.000 Acres
  - Lot 22: 1.000 Acres
  - Lot 23: 1.000 Acres
  - Lot 24: 1.000 Acres
  - Lot 25: 1.000 Acres
  - Lot 26: 1.000 Acres
  - Lot 27: 1.000 Acres
  - Lot 28: 1.000 Acres
  - Lot 29: 1.000 Acres
  - Lot 30: 1.000 Acres
  - Lot 31: 1.000 Acres
  - Lot 32: 1.000 Acres
  - Lot 33: 1.000 Acres
  - Lot 34: 1.000 Acres
  - Lot 35: 1.000 Acres
  - Lot 36: 1.000 Acres
  - Lot 37: 1.000 Acres
  - Lot 38: 1.000 Acres
  - Lot 39: 1.000 Acres
  - Lot 40: 1.000 Acres
  - Lot 41: 1.000 Acres
  - Lot 42: 1.000 Acres
  - Lot 43: 1.000 Acres
  - Lot 44: 1.000 Acres
  - Lot 45: 1.000 Acres
  - Lot 46: 1.000 Acres
  - Lot 47: 1.000 Acres
  - Lot 48: 1.000 Acres
  - Lot 49: 1.000 Acres
  - Lot 50: 1.000 Acres
  - Lot 51: 1.000 Acres
  - Lot 52: 1.000 Acres
  - Lot 53: 1.000 Acres
  - Lot 54: 1.000 Acres
  - Lot 55: 1.000 Acres
  - Lot 56: 1.000 Acres
  - Lot 57: 1.000 Acres
  - Lot 58: 1.000 Acres
  - Lot 59: 1.000 Acres
  - Lot 60: 1.000 Acres
  - Lot 61: 1.000 Acres
  - Lot 62: 1.000 Acres
  - Lot 63: 1.000 Acres
  - Lot 64: 1.000 Acres
  - Lot 65: 1.000 Acres
  - Lot 66: 1.000 Acres
  - Lot 67: 1.000 Acres
  - Lot 68: 1.000 Acres
  - Lot 69: 1.000 Acres
  - Lot 70: 1.000 Acres
  - Lot 71: 1.000 Acres
  - Lot 72: 1.000 Acres
  - Lot 73: 1.000 Acres
  - Lot 74: 1.000 Acres
  - Lot 75: 1.000 Acres
  - Lot 76: 1.000 Acres
  - Lot 77: 1.000 Acres
  - Lot 78: 1.000 Acres
  - Lot 79: 1.000 Acres
  - Lot 80: 1.000 Acres
  - Lot 81: 1.000 Acres
  - Lot 82: 1.000 Acres
  - Lot 83: 1.000 Acres
  - Lot 84: 1.000 Acres
  - Lot 85: 1.000 Acres
  - Lot 86: 1.000 Acres
  - Lot 87: 1.000 Acres
  - Lot 88: 1.000 Acres
  - Lot 89: 1.000 Acres
  - Lot 90: 1.000 Acres
  - Lot 91: 1.000 Acres
  - Lot 92: 1.000 Acres
  - Lot 93: 1.000 Acres
  - Lot 94: 1.000 Acres
  - Lot 95: 1.000 Acres
  - Lot 96: 1.000 Acres
  - Lot 97: 1.000 Acres
  - Lot 98: 1.000 Acres
  - Lot 99: 1.000 Acres
  - Lot 100: 1.000 Acres



**GENERAL NOTES**

- This plat is based on a survey conducted by the City of Chesterfield, Missouri, on or about the 1st day of March, 1990.
- The area shown is bounded by the City of Chesterfield, Missouri, on the north and east, and by the City of Chesterfield, Missouri, on the south and west.
- The area shown is bounded by the City of Chesterfield, Missouri, on the north and east, and by the City of Chesterfield, Missouri, on the south and west.
- The area shown is bounded by the City of Chesterfield, Missouri, on the north and east, and by the City of Chesterfield, Missouri, on the south and west.
- The area shown is bounded by the City of Chesterfield, Missouri, on the north and east, and by the City of Chesterfield, Missouri, on the south and west.
- The area shown is bounded by the City of Chesterfield, Missouri, on the north and east, and by the City of Chesterfield, Missouri, on the south and west.
- The area shown is bounded by the City of Chesterfield, Missouri, on the north and east, and by the City of Chesterfield, Missouri, on the south and west.
- The area shown is bounded by the City of Chesterfield, Missouri, on the north and east, and by the City of Chesterfield, Missouri, on the south and west.
- The area shown is bounded by the City of Chesterfield, Missouri, on the north and east, and by the City of Chesterfield, Missouri, on the south and west.
- The area shown is bounded by the City of Chesterfield, Missouri, on the north and east, and by the City of Chesterfield, Missouri, on the south and west.

**PROPERTY DESCRIPTIONS**

Corner Lot C  
 A lot of 1.000 acres, being all of the land bounded by the City of Chesterfield, Missouri, on the north and east, and by the City of Chesterfield, Missouri, on the south and west.

Corner Lot D  
 A lot of 1.000 acres, being all of the land bounded by the City of Chesterfield, Missouri, on the north and east, and by the City of Chesterfield, Missouri, on the south and west.

Corner Lot E  
 A lot of 1.000 acres, being all of the land bounded by the City of Chesterfield, Missouri, on the north and east, and by the City of Chesterfield, Missouri, on the south and west.

Corner Lot F  
 A lot of 1.000 acres, being all of the land bounded by the City of Chesterfield, Missouri, on the north and east, and by the City of Chesterfield, Missouri, on the south and west.

Corner Lot G  
 A lot of 1.000 acres, being all of the land bounded by the City of Chesterfield, Missouri, on the north and east, and by the City of Chesterfield, Missouri, on the south and west.

Corner Lot H  
 A lot of 1.000 acres, being all of the land bounded by the City of Chesterfield, Missouri, on the north and east, and by the City of Chesterfield, Missouri, on the south and west.

Corner Lot I  
 A lot of 1.000 acres, being all of the land bounded by the City of Chesterfield, Missouri, on the north and east, and by the City of Chesterfield, Missouri, on the south and west.

Corner Lot J  
 A lot of 1.000 acres, being all of the land bounded by the City of Chesterfield, Missouri, on the north and east, and by the City of Chesterfield, Missouri, on the south and west.

Corner Lot K  
 A lot of 1.000 acres, being all of the land bounded by the City of Chesterfield, Missouri, on the north and east, and by the City of Chesterfield, Missouri, on the south and west.

Corner Lot L  
 A lot of 1.000 acres, being all of the land bounded by the City of Chesterfield, Missouri, on the north and east, and by the City of Chesterfield, Missouri, on the south and west.

Corner Lot M  
 A lot of 1.000 acres, being all of the land bounded by the City of Chesterfield, Missouri, on the north and east, and by the City of Chesterfield, Missouri, on the south and west.

Corner Lot N  
 A lot of 1.000 acres, being all of the land bounded by the City of Chesterfield, Missouri, on the north and east, and by the City of Chesterfield, Missouri, on the south and west.

Corner Lot O  
 A lot of 1.000 acres, being all of the land bounded by the City of Chesterfield, Missouri, on the north and east, and by the City of Chesterfield, Missouri, on the south and west.

Corner Lot P  
 A lot of 1.000 acres, being all of the land bounded by the City of Chesterfield, Missouri, on the north and east, and by the City of Chesterfield, Missouri, on the south and west.

Corner Lot Q  
 A lot of 1.000 acres, being all of the land bounded by the City of Chesterfield, Missouri, on the north and east, and by the City of Chesterfield, Missouri, on the south and west.

Corner Lot R  
 A lot of 1.000 acres, being all of the land bounded by the City of Chesterfield, Missouri, on the north and east, and by the City of Chesterfield, Missouri, on the south and west.

Corner Lot S  
 A lot of 1.000 acres, being all of the land bounded by the City of Chesterfield, Missouri, on the north and east, and by the City of Chesterfield, Missouri, on the south and west.

Corner Lot T  
 A lot of 1.000 acres, being all of the land bounded by the City of Chesterfield, Missouri, on the north and east, and by the City of Chesterfield, Missouri, on the south and west.

Corner Lot U  
 A lot of 1.000 acres, being all of the land bounded by the City of Chesterfield, Missouri, on the north and east, and by the City of Chesterfield, Missouri, on the south and west.

Corner Lot V  
 A lot of 1.000 acres, being all of the land bounded by the City of Chesterfield, Missouri, on the north and east, and by the City of Chesterfield, Missouri, on the south and west.

Corner Lot W  
 A lot of 1.000 acres, being all of the land bounded by the City of Chesterfield, Missouri, on the north and east, and by the City of Chesterfield, Missouri, on the south and west.

Corner Lot X  
 A lot of 1.000 acres, being all of the land bounded by the City of Chesterfield, Missouri, on the north and east, and by the City of Chesterfield, Missouri, on the south and west.

Corner Lot Y  
 A lot of 1.000 acres, being all of the land bounded by the City of Chesterfield, Missouri, on the north and east, and by the City of Chesterfield, Missouri, on the south and west.

Corner Lot Z  
 A lot of 1.000 acres, being all of the land bounded by the City of Chesterfield, Missouri, on the north and east, and by the City of Chesterfield, Missouri, on the south and west.

**BOUNDARY ADJUSTMENT PLAT**

**1 OF 1**

**PREPARED FOR:**  
 B STREET COLLISION CENTER  
 13211 B STREET  
 ST. LOUIS, MISSOURI 63104

**PREPARED BY:**  
 B STREET COLLISION CENTER  
 13211 B STREET  
 ST. LOUIS, MISSOURI 63104

**DATE:** 11/11/2024

**CITY OF CHESTERFIELD, MISSOURI**

**708 & 714 LONG ROAD CROSSING AND 714 LONG ROAD**

**B STREET COLLISION CENTER**

**CONSULTING ENGINEERS, INC.**  
 227 Chestnut Street  
 St. Louis, MO 63102  
 Phone: (314) 435-8800  
 Fax: (314) 435-8801  
 Website: www.consultingengineers.com