

BILL NO. 3378

ORDINANCE NO. 3182

**AN ORDINANCE PERTAINING TO THE ACCEPTANCE OF PORTIONS OF PATCHWORK FIELDS AND FIENUP LAKE DRIVE IN FIENUP FARMS AS PUBLIC STREETS IN THE CITY OF CHESTERFIELD**

WHEREAS, the City of Chesterfield has approved the construction of Fienup Farms; and

WHEREAS, the streets in Fienup Farms were intended to be public streets and were therefore constructed to the design standards of the Department of Public Works of the City of Chesterfield; and

WHEREAS, Consort Homes has completed improvements in Plat 2 and Plat 7 including the required portions of Patchwork Fields and Fienup Lake Drive.

NOW, THEREFORE, BE IT ORDAINED BY THE CITY COUNCIL OF THE CITY OF CHESTERFIELD, AS FOLLOWS:

Section 1. The following streets are hereby accepted by the City of Chesterfield for future care and maintenance:

- |                                 |   |
|---------------------------------|---|
| (1) Patchwork Fields (Plat 2):  | Approximately 132 feet; from 40 feet north of Pine Summit Drive to a point 172 feet north of Pine Summit Drive;<br>Book 367 Pages 131-133 |
| (2) Patchwork Fields (Plat 7):  | Approximately 415 feet; from 375 feet west of Fienup Lake Drive to 40 feet east of Fienup Lake Drive;<br>Book 367 Pages 253-255           |
| (3) Fienup Lake Drive (Plat 7): | Approximately 645 feet; from Patchwork Fields to 645 feet south of Patchwork Fields;<br>Book 367 Pages 253-255                            |

Section 2. This Ordinance shall be in full force and effect from and after its passage and approval.

Passed and approved this 7<sup>th</sup> day of February, 2022.

Mary Ann Mastorakos  
PRESIDING OFFICER

Mary Ann Mastorakos  
MAYOR

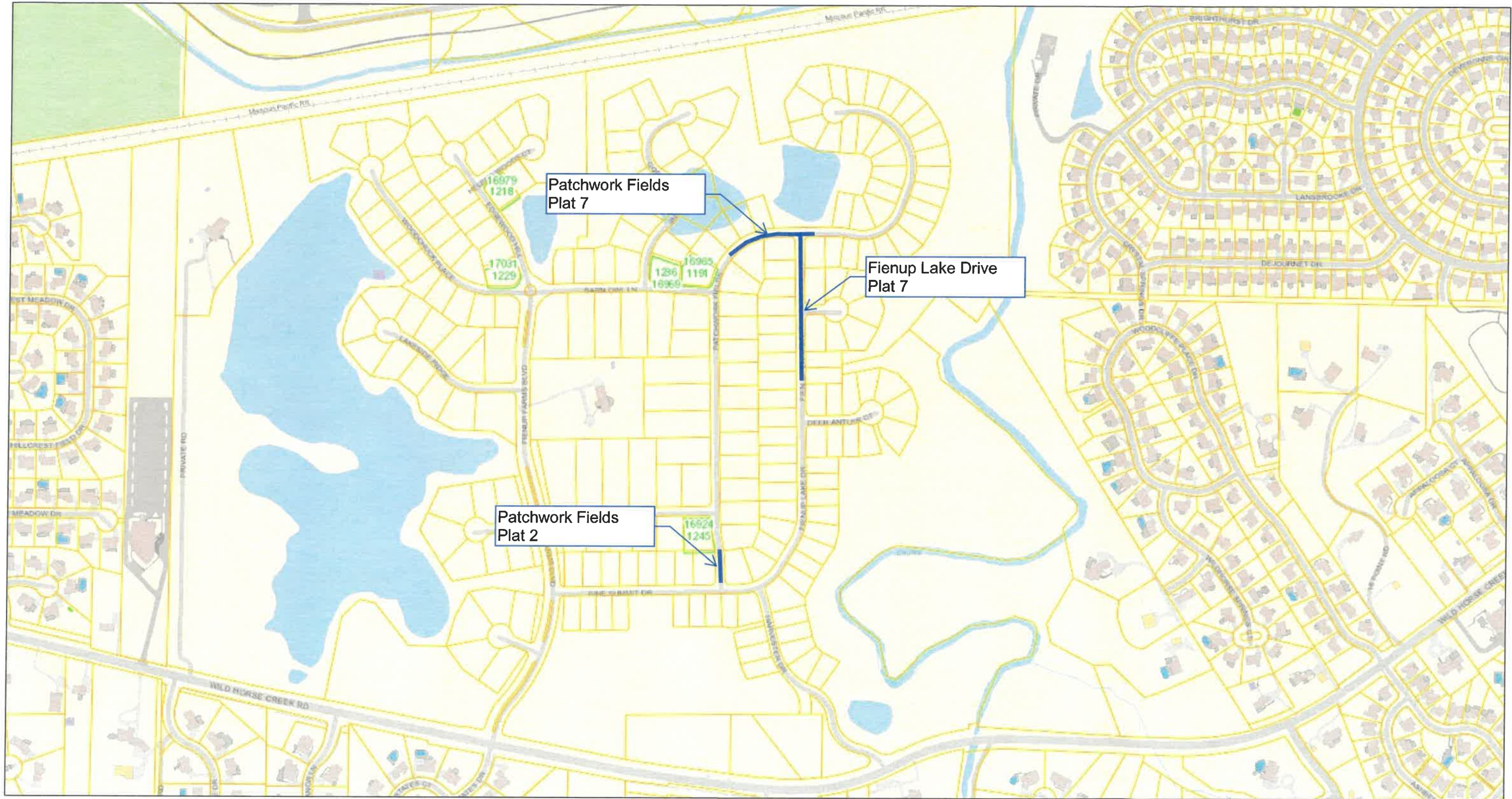
ATTEST:

Vickie M Gound  
CITY CLERK

FIRST READING HELD:  
01/18/2022

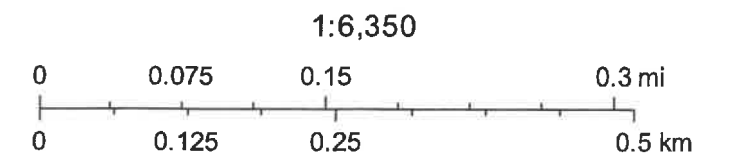


# Fienup Farms Public Street Acceptance



12/28/2021, 11:47:50 AM

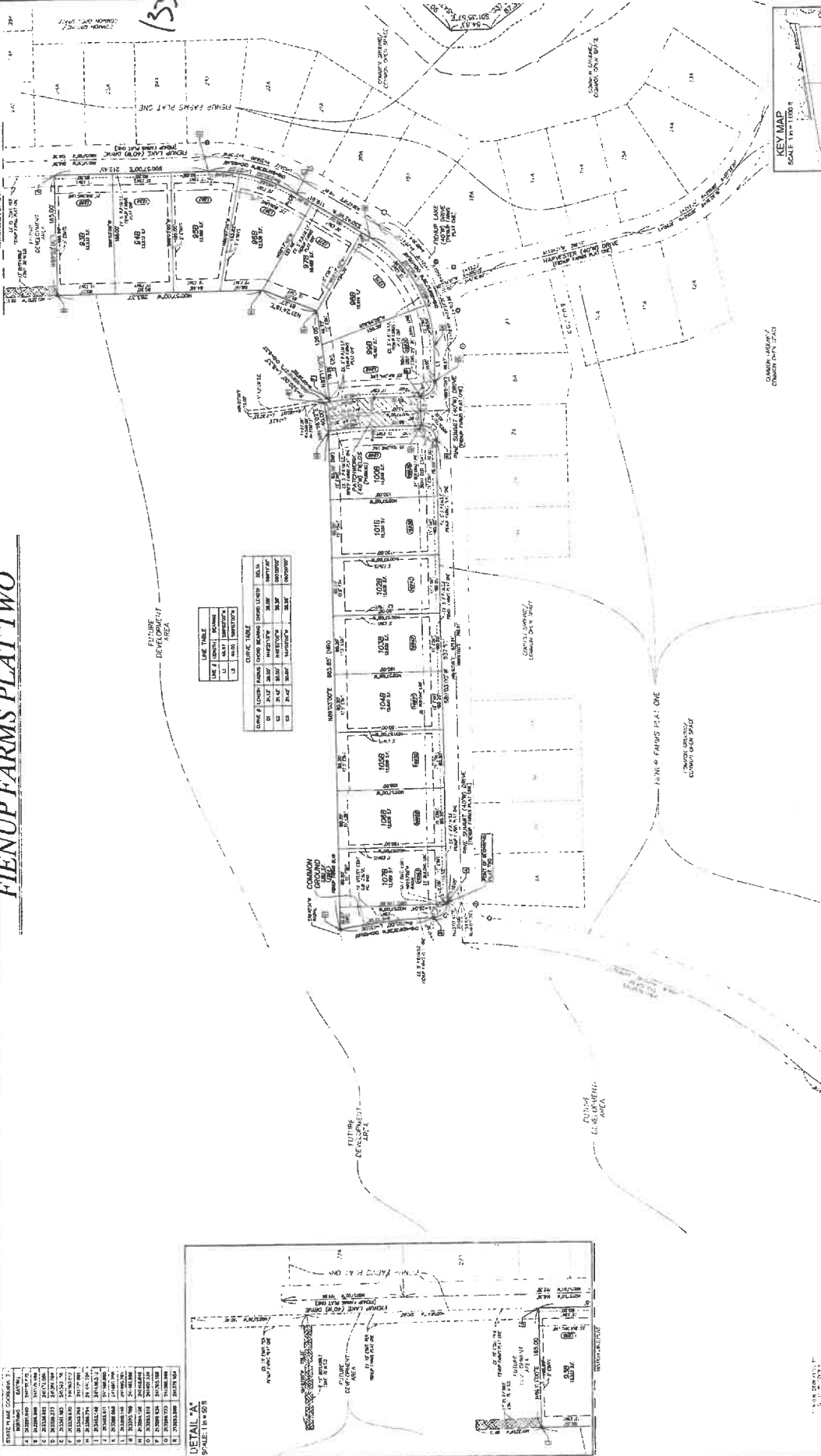
- Parcels
- Preliminary Parcels



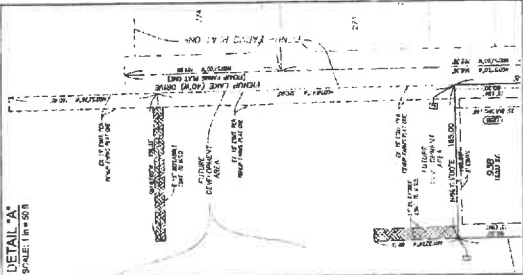


# FIENUP FARMS PLAT TWO

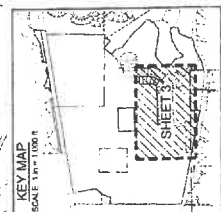
131



LINE #	DESCRIPTION	DATE	BY
1	REVISION		
2	REVISION		
3	REVISION		
4	REVISION		
5	REVISION		
6	REVISION		
7	REVISION		
8	REVISION		
9	REVISION		
10	REVISION		
11	REVISION		
12	REVISION		
13	REVISION		
14	REVISION		
15	REVISION		
16	REVISION		
17	REVISION		
18	REVISION		
19	REVISION		
20	REVISION		
21	REVISION		
22	REVISION		
23	REVISION		
24	REVISION		
25	REVISION		
26	REVISION		
27	REVISION		
28	REVISION		
29	REVISION		
30	REVISION		
31	REVISION		
32	REVISION		
33	REVISION		
34	REVISION		
35	REVISION		
36	REVISION		
37	REVISION		
38	REVISION		
39	REVISION		
40	REVISION		
41	REVISION		
42	REVISION		
43	REVISION		
44	REVISION		
45	REVISION		
46	REVISION		
47	REVISION		
48	REVISION		
49	REVISION		
50	REVISION		
51	REVISION		
52	REVISION		
53	REVISION		
54	REVISION		
55	REVISION		
56	REVISION		
57	REVISION		
58	REVISION		
59	REVISION		
60	REVISION		
61	REVISION		
62	REVISION		
63	REVISION		
64	REVISION		
65	REVISION		
66	REVISION		
67	REVISION		
68	REVISION		
69	REVISION		
70	REVISION		
71	REVISION		
72	REVISION		
73	REVISION		
74	REVISION		
75	REVISION		
76	REVISION		
77	REVISION		
78	REVISION		
79	REVISION		
80	REVISION		
81	REVISION		
82	REVISION		
83	REVISION		
84	REVISION		
85	REVISION		
86	REVISION		
87	REVISION		
88	REVISION		
89	REVISION		
90	REVISION		
91	REVISION		
92	REVISION		
93	REVISION		
94	REVISION		
95	REVISION		
96	REVISION		
97	REVISION		
98	REVISION		
99	REVISION		
100	REVISION		



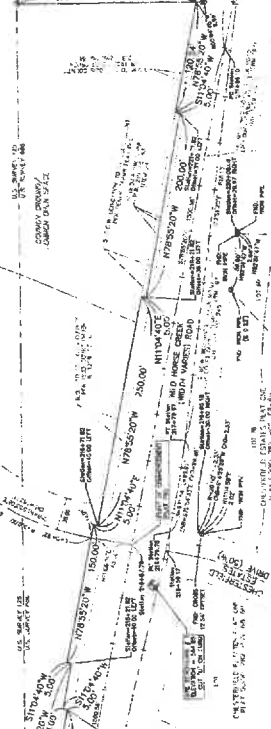
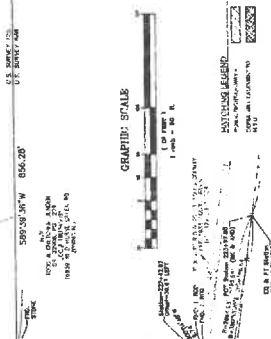
LINE #	DESCRIPTION	DATE	BY
1	REVISION		
2	REVISION		
3	REVISION		
4	REVISION		
5	REVISION		
6	REVISION		
7	REVISION		
8	REVISION		
9	REVISION		
10	REVISION		
11	REVISION		
12	REVISION		
13	REVISION		
14	REVISION		
15	REVISION		
16	REVISION		
17	REVISION		
18	REVISION		
19	REVISION		
20	REVISION		
21	REVISION		
22	REVISION		
23	REVISION		
24	REVISION		
25	REVISION		
26	REVISION		
27	REVISION		
28	REVISION		
29	REVISION		
30	REVISION		
31	REVISION		
32	REVISION		
33	REVISION		
34	REVISION		
35	REVISION		
36	REVISION		
37	REVISION		
38	REVISION		
39	REVISION		
40	REVISION		
41	REVISION		
42	REVISION		
43	REVISION		
44	REVISION		
45	REVISION		
46	REVISION		
47	REVISION		
48	REVISION		
49	REVISION		
50	REVISION		
51	REVISION		
52	REVISION		
53	REVISION		
54	REVISION		
55	REVISION		
56	REVISION		
57	REVISION		
58	REVISION		
59	REVISION		
60	REVISION		
61	REVISION		
62	REVISION		
63	REVISION		
64	REVISION		
65	REVISION		
66	REVISION		
67	REVISION		
68	REVISION		
69	REVISION		
70	REVISION		
71	REVISION		
72	REVISION		
73	REVISION		
74	REVISION		
75	REVISION		
76	REVISION		
77	REVISION		
78	REVISION		
79	REVISION		
80	REVISION		
81	REVISION		
82	REVISION		
83	REVISION		
84	REVISION		
85	REVISION		
86	REVISION		
87	REVISION		
88	REVISION		
89	REVISION		
90	REVISION		
91	REVISION		
92	REVISION		
93	REVISION		
94	REVISION		
95	REVISION		
96	REVISION		
97	REVISION		
98	REVISION		
99	REVISION		
100	REVISION		



**STERLING ENGINEERS & SURVEYORS**  
 1000 W. 10th St., Suite 100  
 Lincoln, NE 68502  
 PHONE: (402) 441-1111  
 FAX: (402) 441-1112  
 WWW: www.sterling-engineers.com

**LEGEND**

1	EXISTING BUILDING
2	EXISTING DRIVE
3	EXISTING SIDEWALK
4	EXISTING UTILITY
5	EXISTING EASEMENT
6	EXISTING FENCE
7	EXISTING CURB
8	EXISTING DRIVE
9	EXISTING SIDEWALK
10	EXISTING UTILITY
11	EXISTING EASEMENT
12	EXISTING FENCE
13	EXISTING CURB
14	EXISTING DRIVE
15	EXISTING SIDEWALK
16	EXISTING UTILITY
17	EXISTING EASEMENT
18	EXISTING FENCE
19	EXISTING CURB
20	EXISTING DRIVE
21	EXISTING SIDEWALK
22	EXISTING UTILITY
23	EXISTING EASEMENT
24	EXISTING FENCE
25	EXISTING CURB
26	EXISTING DRIVE
27	EXISTING SIDEWALK
28	EXISTING UTILITY
29	EXISTING EASEMENT
30	EXISTING FENCE
31	EXISTING CURB
32	EXISTING DRIVE
33	EXISTING SIDEWALK
34	EXISTING UTILITY
35	EXISTING EASEMENT
36	EXISTING FENCE
37	EXISTING CURB
38	EXISTING DRIVE
39	EXISTING SIDEWALK
40	EXISTING UTILITY
41	EXISTING EASEMENT
42	EXISTING FENCE
43	EXISTING CURB
44	EXISTING DRIVE
45	EXISTING SIDEWALK
46	EXISTING UTILITY
47	EXISTING EASEMENT
48	EXISTING FENCE
49	EXISTING CURB
50	EXISTING DRIVE
51	EXISTING SIDEWALK
52	EXISTING UTILITY
53	EXISTING EASEMENT
54	EXISTING FENCE
55	EXISTING CURB
56	EXISTING DRIVE
57	EXISTING SIDEWALK
58	EXISTING UTILITY
59	EXISTING EASEMENT
60	EXISTING FENCE
61	EXISTING CURB
62	EXISTING DRIVE
63	EXISTING SIDEWALK
64	EXISTING UTILITY
65	EXISTING EASEMENT
66	EXISTING FENCE
67	EXISTING CURB
68	EXISTING DRIVE
69	EXISTING SIDEWALK
70	EXISTING UTILITY
71	EXISTING EASEMENT
72	EXISTING FENCE
73	EXISTING CURB
74	EXISTING DRIVE
75	EXISTING SIDEWALK
76	EXISTING UTILITY
77	EXISTING EASEMENT
78	EXISTING FENCE
79	EXISTING CURB
80	EXISTING DRIVE
81	EXISTING SIDEWALK
82	EXISTING UTILITY
83	EXISTING EASEMENT
84	EXISTING FENCE
85	EXISTING CURB
86	EXISTING DRIVE
87	EXISTING SIDEWALK
88	EXISTING UTILITY
89	EXISTING EASEMENT
90	EXISTING FENCE
91	EXISTING CURB
92	EXISTING DRIVE
93	EXISTING SIDEWALK
94	EXISTING UTILITY
95	EXISTING EASEMENT
96	EXISTING FENCE
97	EXISTING CURB
98	EXISTING DRIVE
99	EXISTING SIDEWALK
100	EXISTING UTILITY



**THE STERLING ENGINEERS & SURVEYORS**  
 PROJECT: FIENUP FARMS PLAT TWO  
 DATE: FEBRUARY 2019  
 DRAWN BY: JAH  
 CHECKED BY: JAH  
 PROJECT NO.: 14-001-198  
 SHEET NO.: 2 OF 2

