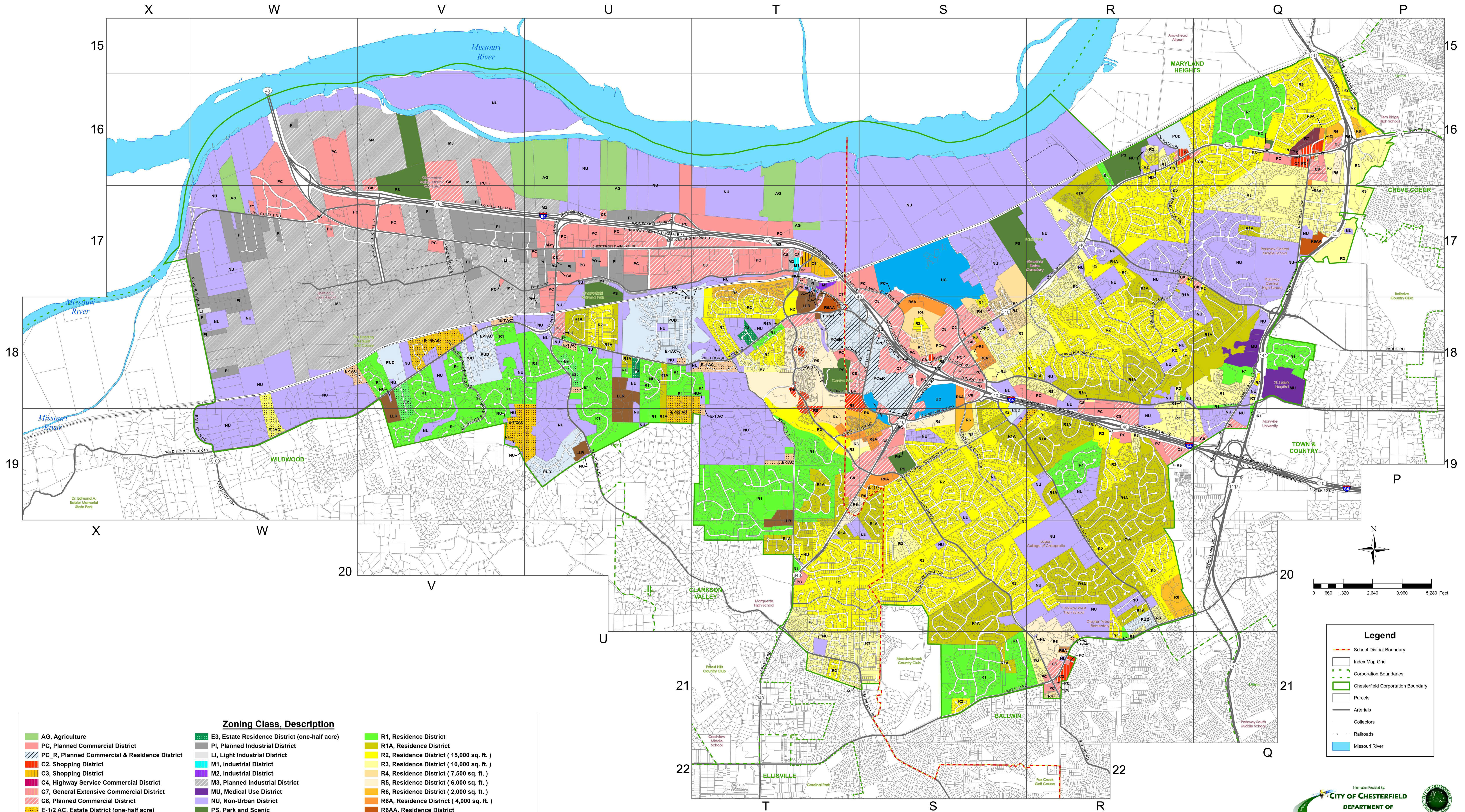
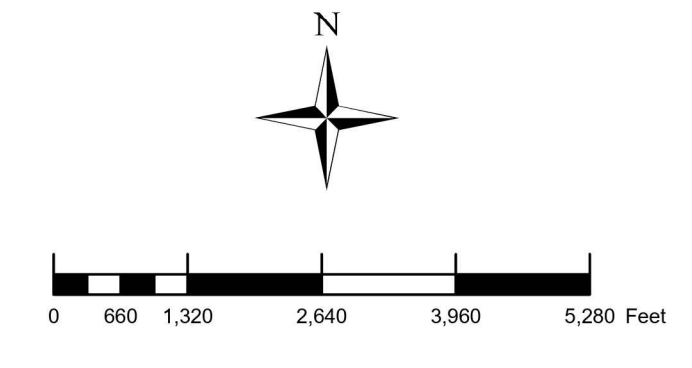




City of Chesterfield - Zoning Base Map



Zoning Class, Description		
AG, Agriculture	PC, Planned Commercial District	R1, Residence District
PC_R, Planned Commercial & Residence District	PI, Planned Industrial District	R1A, Residence District
C2, Shopping District	LI, Light Industrial District	R2, Residence District (15,000 sq. ft.)
C3, Shopping District	M1, Industrial District	R3, Residence District (10,000 sq. ft.)
C4, Highway Service Commercial District	M2, Industrial District	R4, Residence District (7,500 sq. ft.)
C7, General Extensive Commercial District	M3, Planned Industrial District	R5, Residence District (6,000 sq. ft.)
C8, Planned Commercial District	MU, Medical Use District	R6, Residence District (2,000 sq. ft.)
E-1/2 AC, Estate District (one-half acre)	NU, Non-Urban District	R6A, Residence District (4,000 sq. ft.)
E-1 AC, Estate District (one acre)	PS, Park and Scenic	R6AA, Residence District
E-2 AC, Estate District (two acre)	UC, Urban Core	R7, Residence District (1,750 sq. ft.)
E2, Estate Residence District (one acre)	PUD, Planned Unit Development	R8, Residence District (500 sq. ft.)
	LLR, Large Lot Residential District	



Legend	
	School District Boundary
	Index Map Grid
	Corporation Boundaries
	Chesterfield Corporation Boundary
	Parcels
	Arterials
	Collectors
	Railroads
	Missouri River