

Memorandum

Department of Planning



To: Finance and Administration Committee
From: Justin Wyse, Director of Planning
Date: September 28, 2021
RE: Census - Redistricting

Summary

Following the release of population data at the block level, Staff has reviewed the existing ward boundaries within the City of Chesterfield and determined that population shifts mandate that the ward boundaries be modified. The ward boundaries are required to be “substantially equal” under state law and a 5% threshold is generally held to meet this requirement. With the results from the 2020 Census in, the current ward populations are shown below. With a population of 49,999, each ward should be between 11,875 and 13,125. The population for Ward 2 exceeds the maximum deviation and, therefore, the City must modify the ward boundaries.

Existing Population by Ward

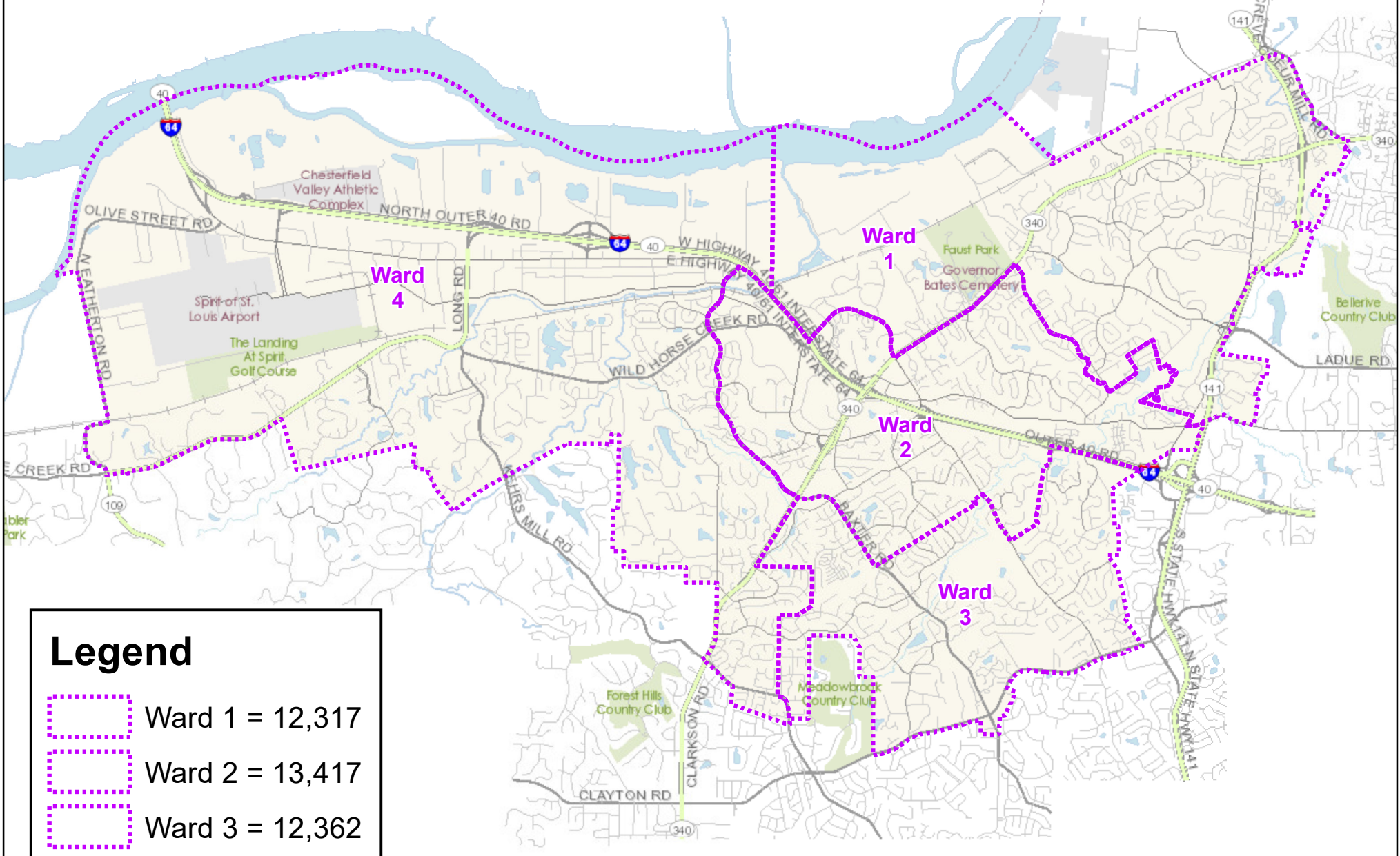
Ward	Population	% from equal
1	12,317	-1.46%
2	13,417	7.34%
3	12,362	-1.10%
4	11,903	-4.77%
Total	49,999	

When reviewing the ward boundaries, logical boundary lines (i.e. major roadways, access to neighborhoods, creeks, and similar physical constraints) were used to create consistent areas for voter representation. Additionally, recent and anticipated residential development is expected to occur primarily in Ward 2 and Ward 4. As such, those wards have been pushed slightly below the average, with Ward 1 and Ward 3 being slightly over. This foresight should help to create equal wards over the next decade and help to minimize more drastic boundary shifts in the future.

Proposed Population by Ward

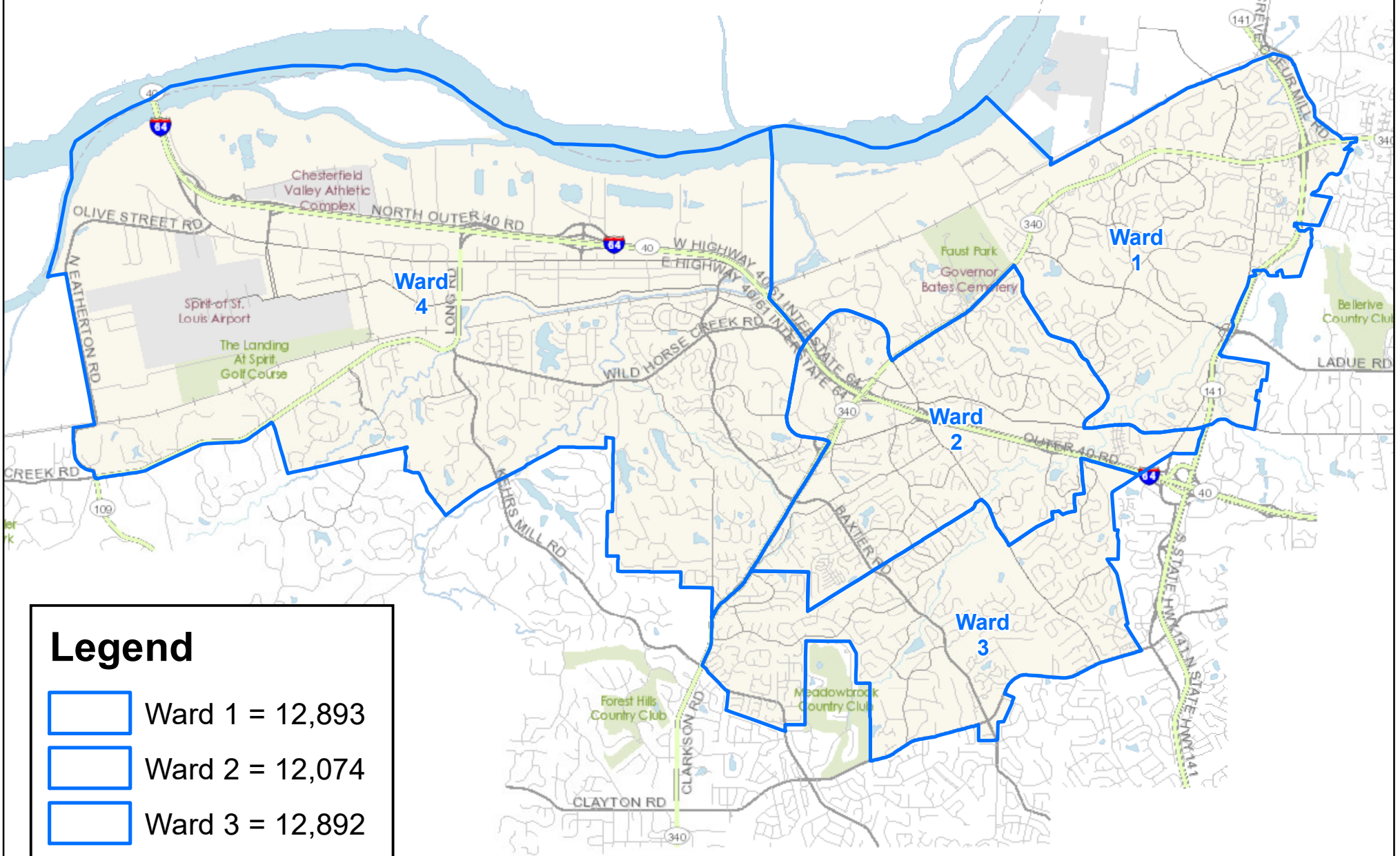
Ward	Population	% from equal
1	12,893	-3.15
2	12,074	3.41
3	12,892	-3.14
4	12,140	2.88

Current Ward Boundaries



Legend	
	Ward 1 = 12,317
	Ward 2 = 13,417
	Ward 3 = 12,362
	Ward 4 = 11,903

Proposed Ward Boundary Changes



Legend	
	Ward 1 = 12,893
	Ward 2 = 12,074
	Ward 3 = 12,892
	Ward 4 = 12,140

Municipality	Yr. 2010	Yr. 2020	Difference	% Change
Ballwin	30,404	31,103	699	2.3%
Bella Villa	729	757	28	3.8%
Bellefontaine Neigh.	10,860	10,740	(120)	-1.1%
Bellerive Acres	188	191	3	1.6%
Bel-Nor	1,499	1,399	(100)	-6.7%
Bel-Ridge	2,737	2,132	(605)	-22.1%
Berkeley	8,978	8,228	(750)	-8.4%
Beverly Hills	574	475	(99)	-17.2%
Black Jack	6,929	6,634	(295)	-4.3%
Breckenridge Hills	4,746	4,458	(288)	-6.1%
Brentwood	8,055	8,233	178	2.2%
Bridgeton	11,550	11,445	(105)	-0.9%
Calverton Park	1,293	1,143	(150)	-11.6%
Champ	13	10	(3)	-23.1%
Charlack	1,363	1,304	(59)	-4.3%
Chesterfield	47,484	49,999	2,515	5.3%
Clarkson Valley	2,632	2,609	(23)	-0.9%
Clayton	15,939	17,355	1,416	8.9%
Cool Valley	1,196	1,039	(157)	-13.1%
Country Club Hills	1,274	1,014	(260)	-20.4%
Country Life Acres	74	72	(2)	-2.7%
Crestwood	11,912	12,404	492	4.1%
Creve Coeur	17,833	18,834	1,001	5.6%
Crystal Lake Park	470	508	38	8.1%
Dellwood	5,025	4,914	(111)	-2.2%
Des Peres	8,373	9,193	820	9.8%
Edmundson	834	860	26	3.1%
Ellisville	9,133	9,985	852	9.3%
Eureka	10,189	11,646	1,457	14.3%
Fenton	4,022	3,989	(33)	-0.8%
Ferguson	21,203	18,527	(2,676)	-12.6%
Flordell Hills	822	724	(98)	-11.9%
Florissant	52,158	52,533	375	0.7%
Frontenac	3,482	3,612	130	3.7%
Glen Echo Park	166	122	(44)	-26.5%
Glendale	5,925	6,176	251	4.2%
Grantwood Village	863	941	78	9.0%
Green Park	2,622	2,705	83	3.2%
Greendale	651	642	(9)	-1.4%
Hanley Hills	2,101	2,009	(92)	-4.4%
Hazelwood	25,703	25,458	(245)	-1.0%
Hillsdale	1,478	1,216	(262)	-17.7%
Huntleigh	334	361	27	8.1%

Municipality	Yr. 2010	Yr. 2020	Difference	% Change
Jennings	14,712	12,895	(1,817)	-12.4%
Kinloch	298	263	(35)	-11.7%
Kirkwood	27,540	29,461	1,921	7.0%
Ladue	8,521	8,989	468	5.5%
Lakeshire	1,432	1,554	122	8.5%
Manchester	18,094	18,333	239	1.3%
Maplewood	8,046	8,269	223	2.8%
Marlborough	2,179	2,221	42	1.9%
Maryland Heights	27,472	28,284	812	3.0%
Moline Acres	2,442	2,156	(286)	-11.7%
Normandy	5,008	4,287	(721)	-14.4%
Northwoods	4,227	3,687	(540)	-12.8%
Norwood Court	959	890	(69)	-7.2%
Oakland	1,381	1,390	9	0.7%
Olivette	7,737	8,504	767	9.9%
Overland	16,062	15,955	(107)	-0.7%
Pacific (incl Franklin	7,002	7,414	412	5.9%
Pagedale	3,304	2,554	(750)	-22.7%
Pasadena Hills	930	912	(18)	-1.9%
Pasadena Park	470	435	(35)	-7.4%
Pine Lawn	3,275	2,754	(521)	-15.9%
Richmond Heights	8,603	9,286	683	7.9%
Riverview	2,856	2,397	(459)	-16.1%
Rock Hill	4,635	4,750	115	2.5%
St. Ann	13,020	13,019	(1)	0.0%
St. John	6,517	6,643	126	1.9%
Shrewsbury	6,254	6,406	152	2.4%
Sunset Hills	8,496	9,198	702	8.3%
Sycamore Hills	668	561	(107)	-16.0%
Town & Country	10,815	11,640	825	7.6%
Twin Oaks	392	605	213	54.3%
University City	35,371	35,065	(306)	-0.9%
Uplands Park	445	312	(133)	-29.9%
Valley Park	6,942	6,885	(57)	-0.8%
Velda City	1,420	1,188	(232)	-16.3%
Velda Village Hills	1,055	881	(174)	-16.5%
Vinita Park	2,157	1,970	(187)	-8.7%
Warson Woods	1,962	2,018	56	2.9%
Webster Groves	22,995	24,010	1,015	4.4%
Wellston	2,313	1,537	(776)	-33.5%
Westwood	278	316	38	13.7%
Wilbur Park	471	439	(32)	-6.8%
Wildwood	35,517	35,417	(100)	-0.3%
Winchester	1,547	1,447	(100)	-6.5%
Woodson Terrace	4,063	3,950	(113)	-2.8%
St. Louis County (Uni	321,440	321,579	139	0.0%

2010 Totals	998,954
2020 Totals	1,004,125
Percent Change	0.5%

A ward's final population cannot deviate from the new census average by more than 5% in either direction.

- *Example:*
If the 2020 Census reports a population of 50,000, the four-ward average of 12,500 would ideally lead **all wards to be between 11,875 – 13,125 residents.**
- Reynolds v. Sims (1963) Supreme Court case held that the Equal Protection Clause of the 14th Amendment requires state and local legislative districts to be substantially equal

- Districts must be contiguous and not feature any exclaves.
- Districts should be as “compact” as possible, meaning that residents are in close proximity or share cultural cohesion.
- Preserve “communities of interest” where possible.

Voting Rights Act of 1964

Section 2: District lines must not deny or abridge the voting rights of any citizen on account of their race, color, or membership in a language minority group.

The City obtains census tract/block information and draws new boundaries. Once the City adopts the new boundaries by ordinance, we send the information to the County election board and they then change the lines for the voting tract GIS.

Effective 28 Aug 1978

Title VII CITIES, TOWNS AND VILLAGES

Chapter 78

- 78.540. Conduct of election — council to establish voting precincts.** — 1. If a person elected fails to qualify within thirty days after his election, the office shall be filled as if there were a vacancy in such office, as herein provided.
2. No informalities in conducting municipal elections shall invalidate the same, if they have been conducted fairly and in substantial conformity to the requirements of these sections.
3. The council shall by ordinance, resolution or otherwise, divide the city into as many voting precincts as it may deem necessary to afford all the voters a convenient opportunity of exercising the right of franchise in all municipal elections to be held in the city, and each of said precincts shall be deemed a ward within the purview of the general and primary election laws of the state.

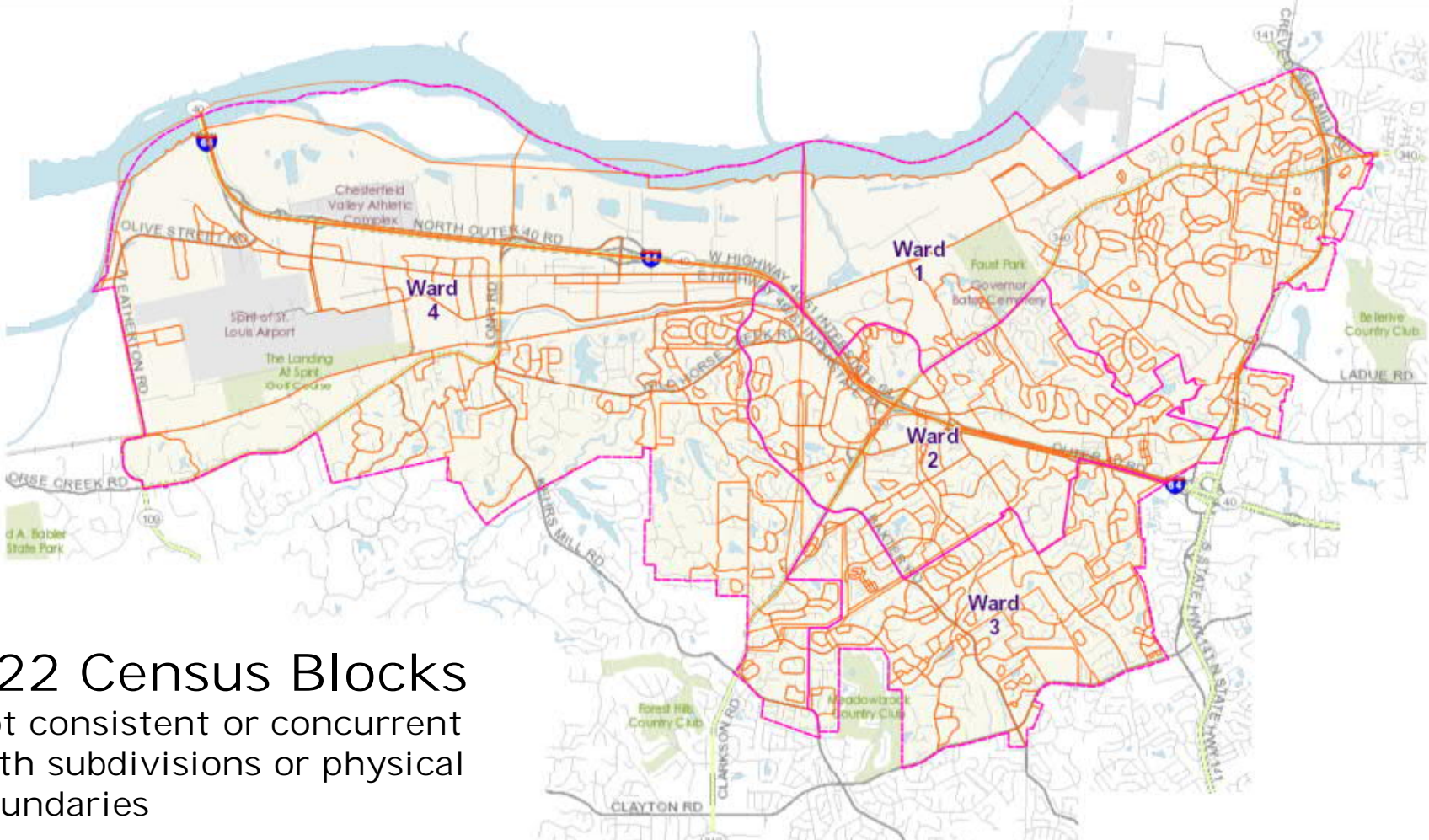
Effective 28 Aug 1939

Title VII CITIES, TOWNS AND VILLAGES

Chapter 81

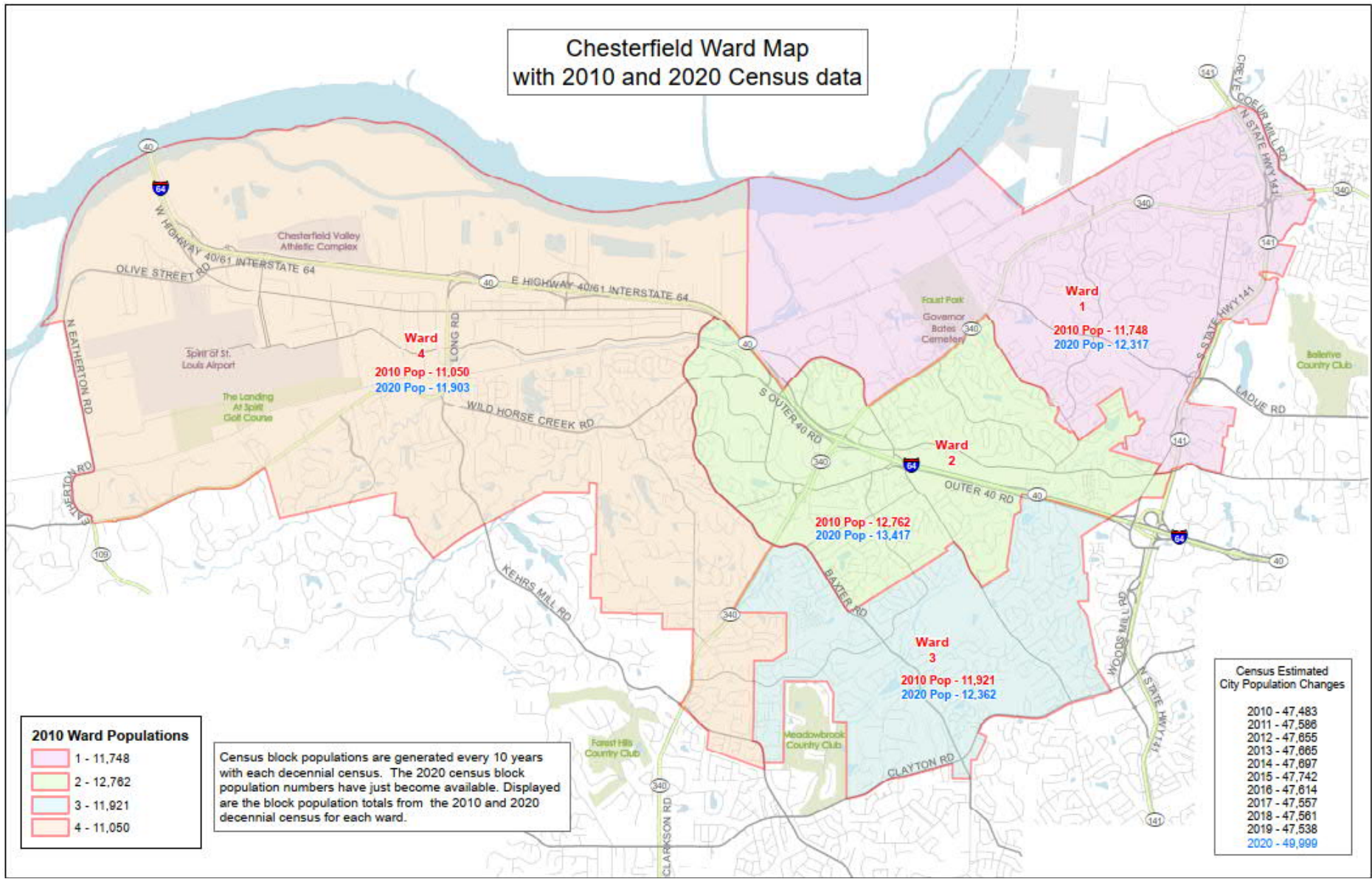
81.210. Changes of wards by ordinance (cities of 20,000 and less than 250,000). — Whenever the corporate limits of any city now coming or which may hereafter come under the operation of section [81.200](#) of this chapter shall hereafter be altered or extended, and whenever the population of any such city, or of any ward or wards thereof, has been or may be so increased or diminished as to render, in the opinion of the common council, a division or redistricting of the corporation into wards, or a change in the boundary of any ward or wards necessary, the same may be done by ordinance at some regular meeting of the common council.

Census Block Data



622 Census Blocks
not consistent or concurrent
with subdivisions or physical
boundaries

Chesterfield Ward Map with 2010 and 2020 Census data



2010 Ward Populations

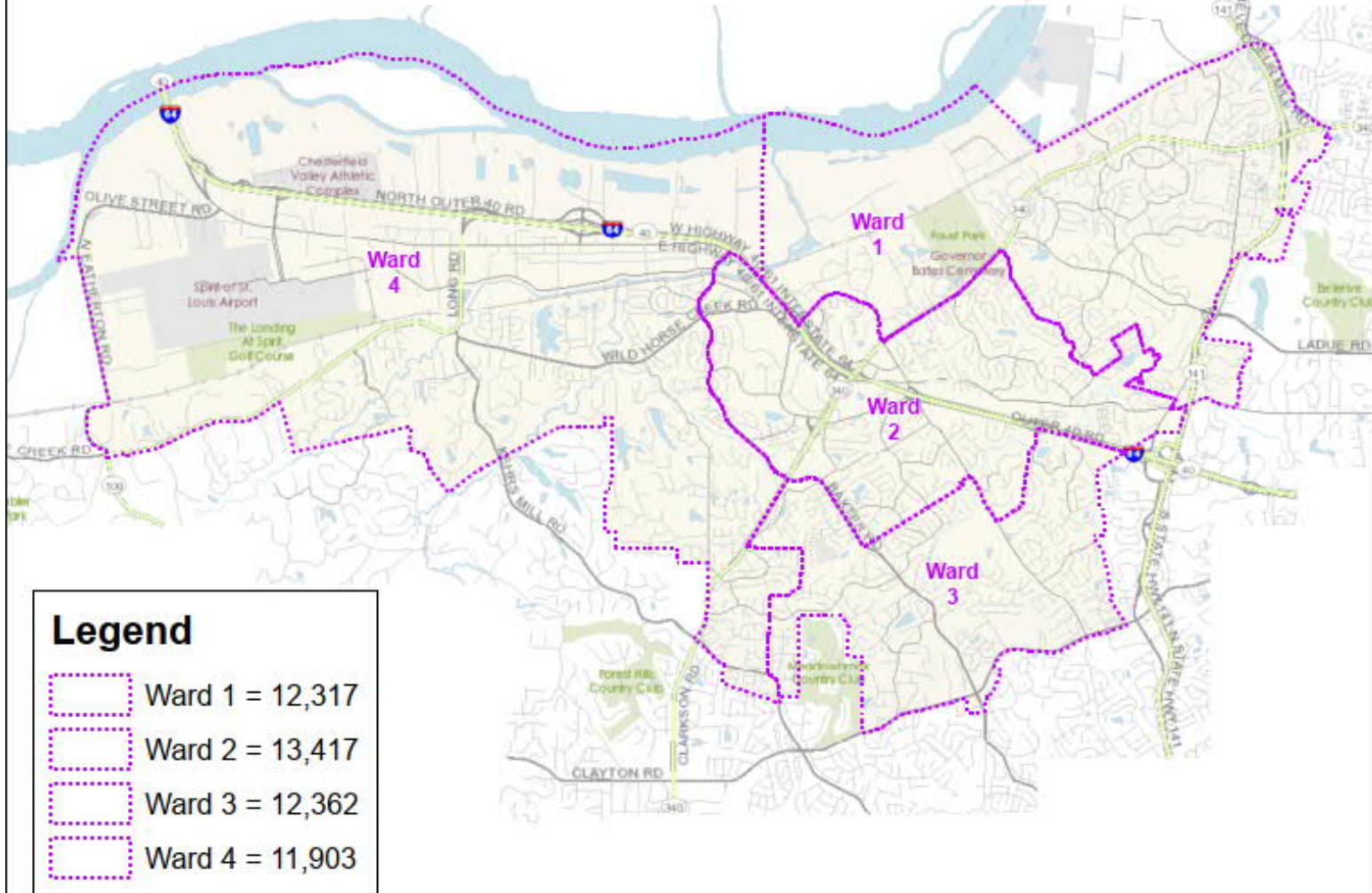
1 - 11,748
2 - 12,762
3 - 11,921
4 - 11,050

Census block populations are generated every 10 years with each decennial census. The 2020 census block population numbers have just become available. Displayed are the block population totals from the 2010 and 2020 decennial census for each ward.

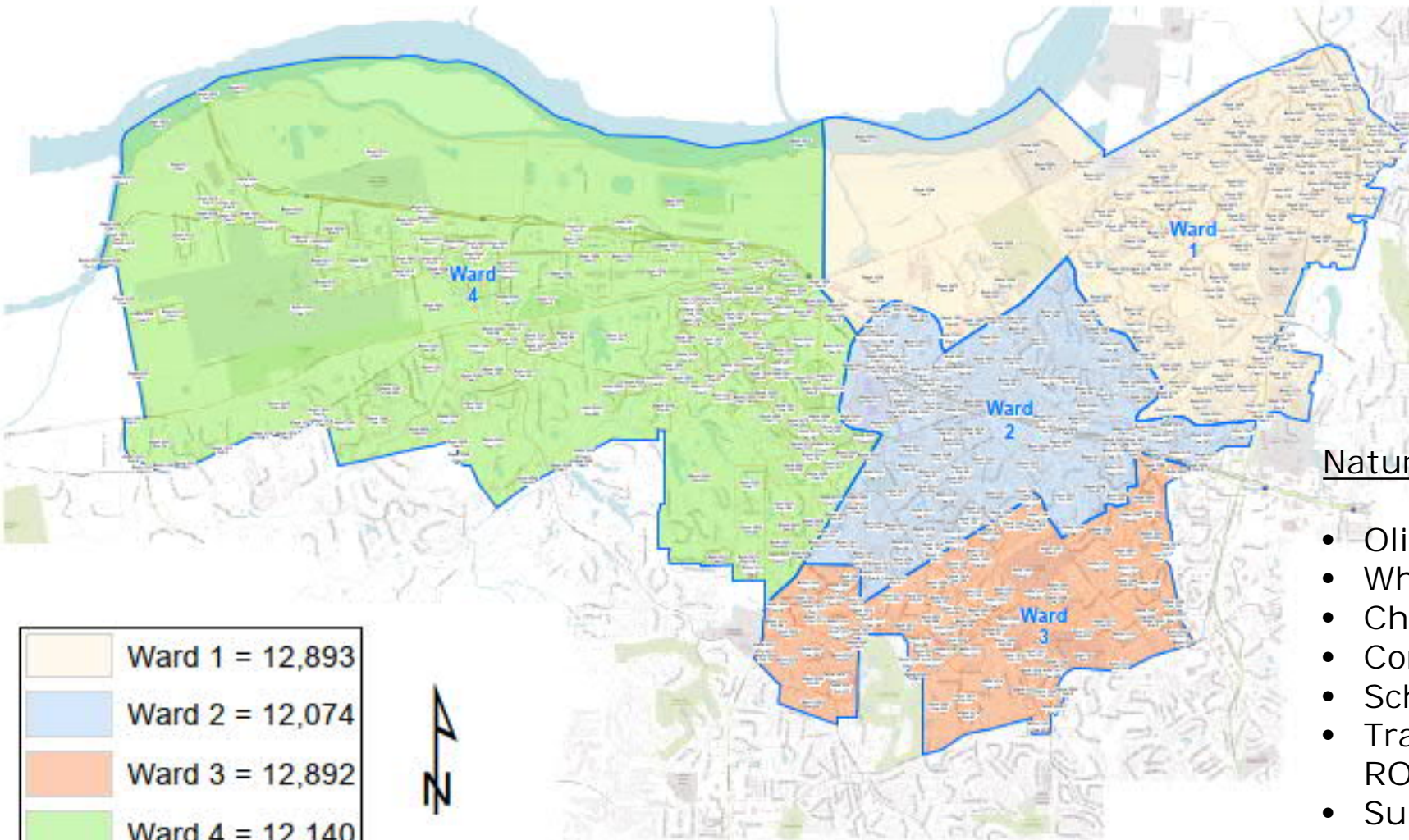
Census Estimated City Population Changes

2010 - 47,483
2011 - 47,588
2012 - 47,655
2013 - 47,665
2014 - 47,697
2015 - 47,742
2016 - 47,614
2017 - 47,557
2018 - 47,561
2019 - 47,538
2020 - 49,999

Current Ward Boundaries



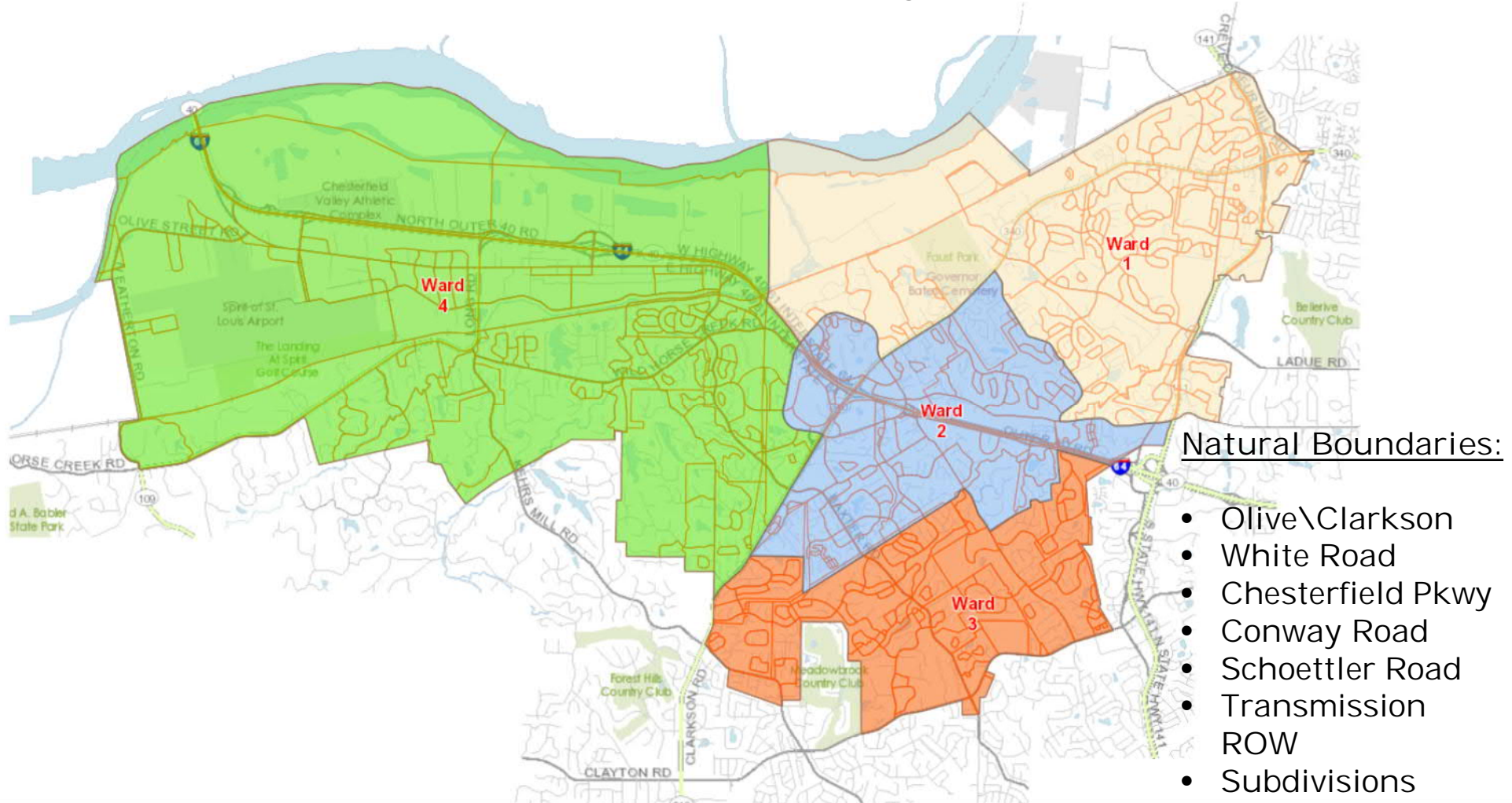
Proposed Ward Redistricting Changes



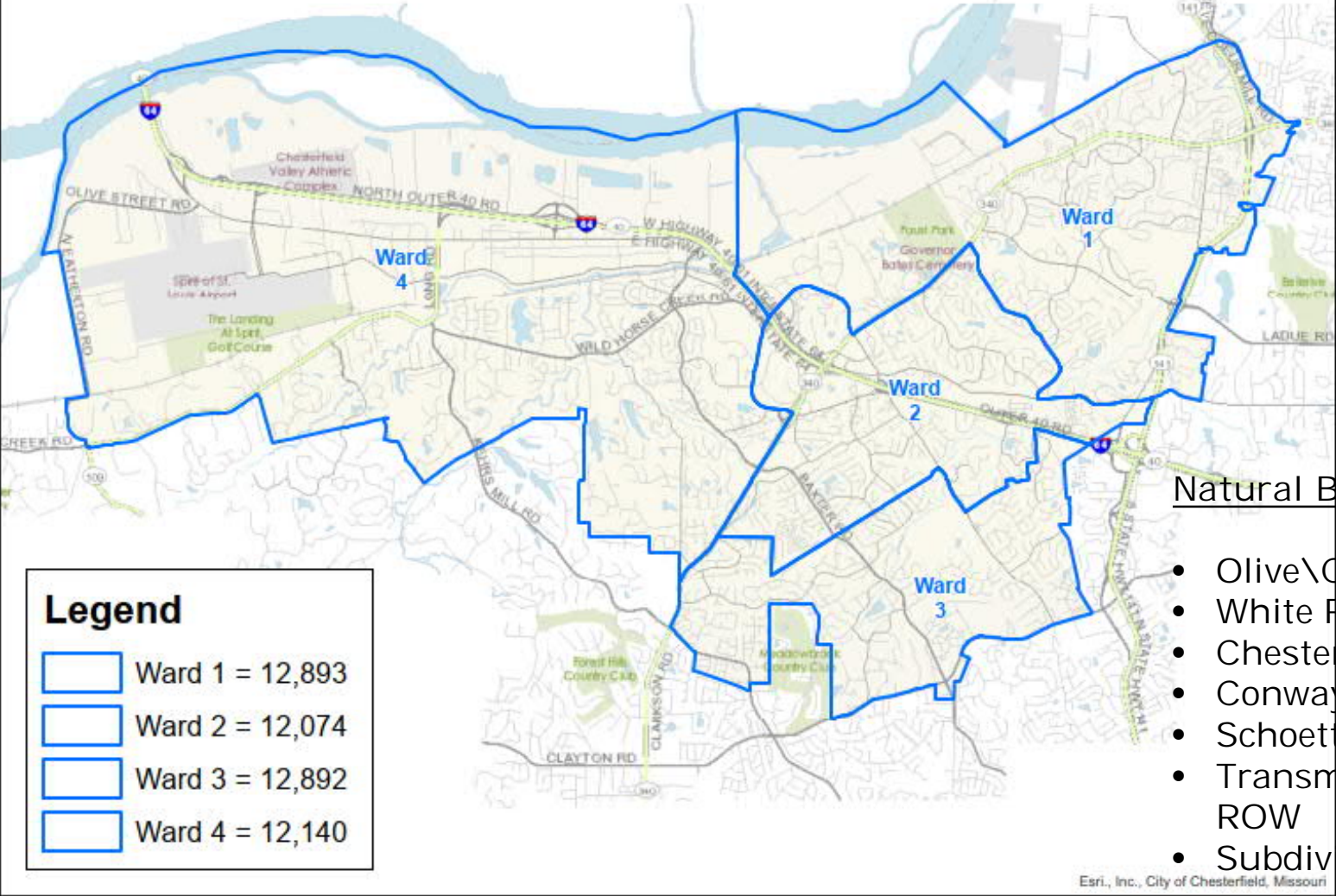
Natural Boundaries:

- Olive\Clarkson
- White Road
- Chesterfield Pkwy
- Conway Road
- Schoettler Road
- Transmission ROW
- Subdivisions

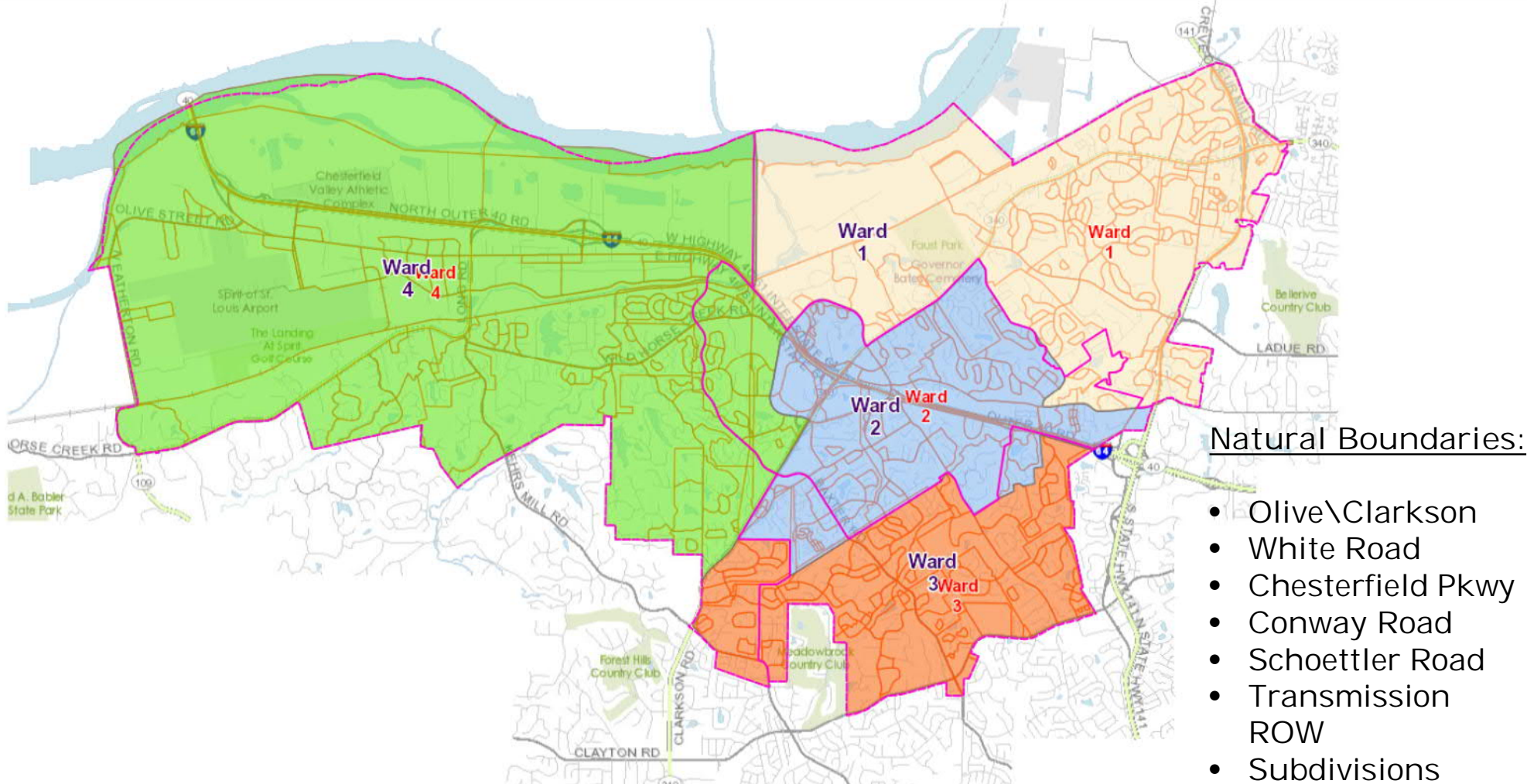
Proposed Ward Redistricting



Proposed Ward Boundary Changes



CURRENT VS. PROPOSED OVERLAY



Proposed Ward Redistricting Changes

