



Finance Director  
636-537-4726

## M E M O

DATE: February 14, 2020  
TO: Mike Geisel, City Administrator  
FROM: Jeannette Kelly, Finance Director *J. Kelly*  
RE: Financial Update

---

The following is a brief update of City finances through February 14, 2020.

These statements are being prepared on a cash basis.

In combination, the general fund sales tax revenues (Pooled Sales tax and Prop P revenues) for the year are 13.78% (\$191k) over budget. Please remember, the timing and proportions of both the receipts and budget have proven to be inconsistent from year to year.

Pooled Sales Tax collections for the year on a cash basis for the general fund are ahead of the 2020 budget expectations by 31.26% (\$148k). Again, please remember that the monthly budget proportions are estimated and the receipts are heavily dependent on timing of reporting. The Pooled Sales Tax receipts for the year were ahead of the 2019 value by 9.31% (\$96k). However, please remember that the monthly budget proportions are estimated from prior periods and should not be given significant weight in comparing receipts.

Public Safety receipts (Prop P) of \$444,495 exceed year to date budget expectations by 15.03% or \$58k (on the cash basis), and exceed 2019 revenues by 3.43% (\$15k).

Capital and Parks Sales tax collections for the year were \$1,197,984 and \$1,018,287, respectively, exceeding the 2020 budget by \$9k and \$7k, respectively, and exceeding 2019 revenues by 0.71% (\$16k). The same caveats discussed for the pooled revenues apply to these revenue sources. Last January's revenues exceeded the prior year, while last years' February revenues decreased by a similar offset.

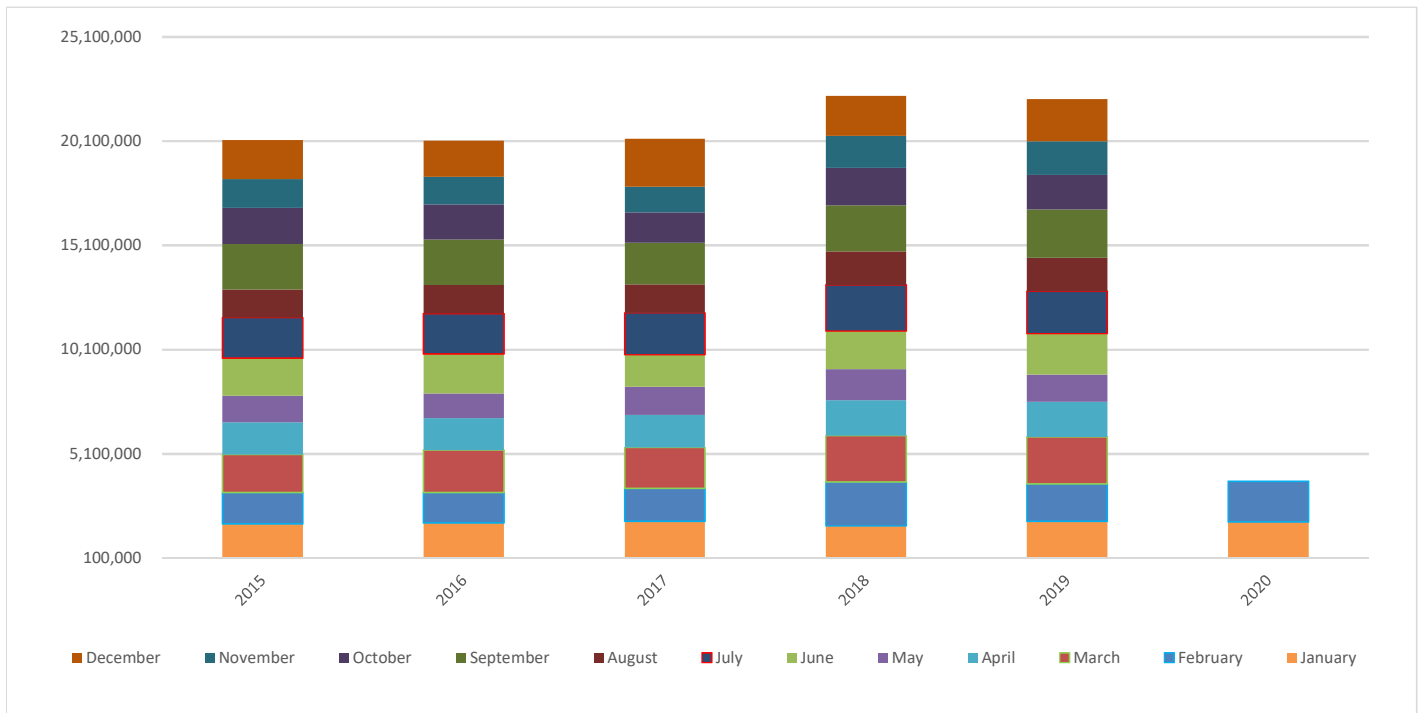
Finally, it is important to remind you that while we're reporting these revenues on a cash basis in February of 2020, for financial reporting purposes these revenues are accrued back to 2019 fiscal year in the CAFR.

The following schedules are attached for your convenience and reference:

- Fund Statements – General, Public Safety, Parks and Capital
- Revenue charts

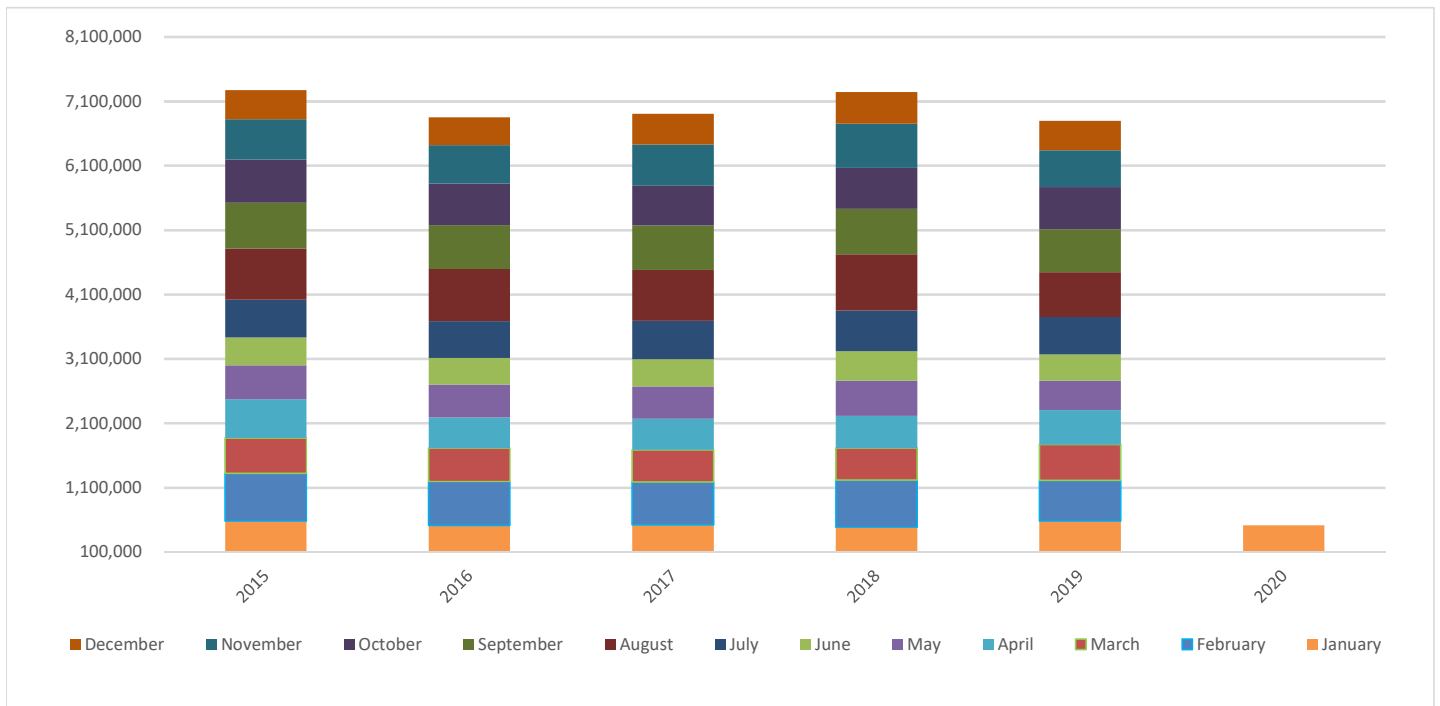
**City of Chesterfield  
Sales Tax Totals  
FY's 2015-2020**

Revenues	2015	2016	2017	2018	2019	% incr/-decr from 2018 to 2019	2020	% incr/-decr from 2019 to 2020
January	1,749,571	1,794,234	1,874,040	1,642,893	1,877,663	14.29%	1,843,926	-1.80%
February	1,497,841	1,449,113	1,573,708	2,111,792	1,789,190	-15.28%	1,949,682	8.97%
March	1,827,814	2,050,813	1,958,276	2,218,119	2,247,718	1.33%	-	-100.00%
April	1,541,689	1,514,083	1,565,913	1,706,183	1,693,494	-0.74%	-	-100.00%
May	1,271,301	1,185,921	1,348,555	1,488,650	1,298,400	-12.78%	-	-100.00%
June	1,811,712	1,892,299	1,532,820	1,823,206	1,956,468	7.31%	-	-100.00%
July	1,936,080	1,944,636	2,018,137	2,218,669	2,042,048	-7.96%	-	-100.00%
August	1,360,366	1,363,481	1,356,439	1,611,136	1,614,003	0.18%	-	-100.00%
September	2,177,495	2,182,287	1,997,968	2,208,999	2,301,366	4.18%	-	-100.00%
October	1,724,367	1,687,609	1,463,498	1,789,400	1,671,972	-6.56%	-	-100.00%
November	1,389,287	1,337,269	1,222,073	1,545,432	1,610,237	4.19%	-	-100.00%
December	1,869,415	1,722,065	2,300,456	1,906,113	2,021,934	6.08%	-	-100.00%
<b>Total</b>	<b>20,156,937</b>	<b>20,123,809</b>	<b>20,211,883</b>	<b>22,270,590</b>	<b>22,124,494</b>	<b>-0.66%</b>	<b>3,793,609</b>	<b>102.04%</b>



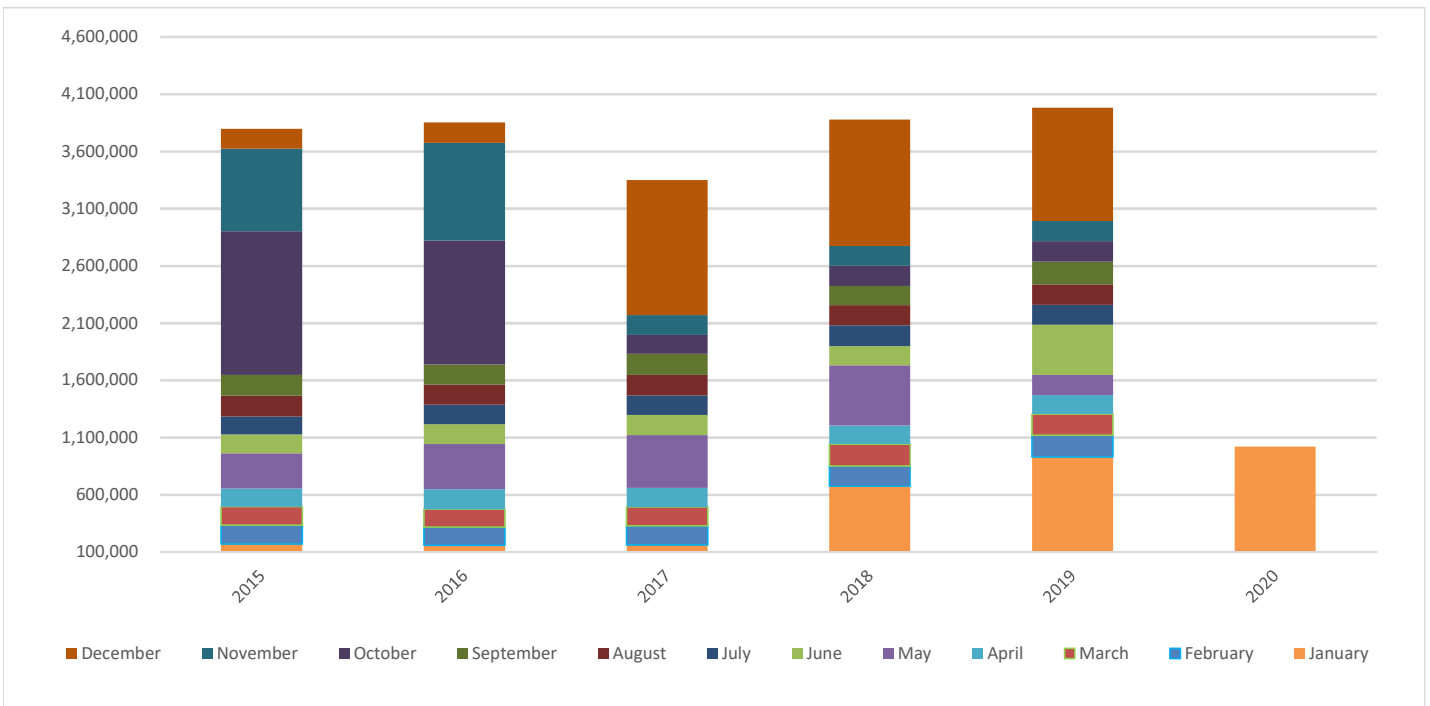
**General Fund  
Utility Tax Totals  
FY's 2015-2020**

Revenues	2015	2016	2017	2018	2019	% incr/-decr from 2018 to 2019	2020	% incr/-decr from 2019 to 2020
January	579,994	514,106	521,632	486,659	581,674	19.52%	516,424	-11.22%
February	742,539	682,996	668,292	734,230	630,924	-14.07%	-	-100.00%
March	551,568	520,282	497,101	494,075	558,710	13.08%	-	-100.00%
April	598,362	472,947	484,173	501,981	533,985	6.38%	-	-100.00%
May	532,194	512,388	502,778	547,237	460,414	-15.87%	-	-100.00%
June	431,859	413,842	425,601	454,745	404,933	-10.95%	-	-100.00%
July	583,155	570,540	595,868	632,980	584,085	-7.72%	-	-100.00%
August	797,019	807,590	789,787	876,693	695,249	-20.70%	-	-100.00%
September	711,357	684,741	691,136	700,677	660,805	-5.69%	-	-100.00%
October	668,096	649,251	615,581	636,630	657,615	3.30%	-	-100.00%
November	627,675	592,050	640,303	686,414	571,048	-16.81%	-	-100.00%
December	450,455	433,528	477,108	492,506	462,490	-6.09%	-	-100.00%
<b>Total</b>	<b>7,274,271</b>	<b>6,854,261</b>	<b>6,909,359</b>	<b>7,244,826</b>	<b>6,801,931</b>	<b>-6.11%</b>	<b>516,424</b>	<b>-11.22%</b>



**General Fund  
Intergovernmental Tax Totals  
FY's 2015-2020**

Revenues	2015	2016	2017	2018	2019	% incr/-decr from 2018 to 2019	2020	% incr/-decr from 2019 to 2020
January	171,490	160,142	163,017	674,997	932,251	38.11%	1,021,832	9.61%
February	164,142	159,355	167,303	176,789	189,673	7.29%	-	-100.00%
March	160,505	154,022	164,498	193,398	185,172	-4.25%	-	-100.00%
April	160,448	175,932	167,767	163,430	166,182	1.68%	-	-100.00%
May	305,927	395,070	461,483	523,306	176,443	-66.28%	-	-100.00%
June	166,546	174,688	173,343	169,799	437,528	157.67%	-	-100.00%
July	156,692	169,132	173,190	179,468	174,908	-2.54%	-	-100.00%
August	180,881	174,196	178,706	177,586	178,845	0.71%	-	-100.00%
September	181,666	177,357	182,568	166,921	196,427	17.68%	-	-100.00%
October	1,256,552	1,081,667	167,224	176,147	178,025	1.07%	-	-100.00%
November	720,933	853,656	170,766	172,585	176,196	2.09%	-	-100.00%
December	172,502	179,166	1,183,478	1,106,340	989,686	-10.54%	-	-100.00%
<b>Total</b>	<b>3,798,286</b>	<b>3,854,381</b>	<b>3,353,344</b>	<b>3,880,766</b>	<b>3,981,336</b>	<b>2.59%</b>	<b>1,021,832</b>	<b>9.61%</b>

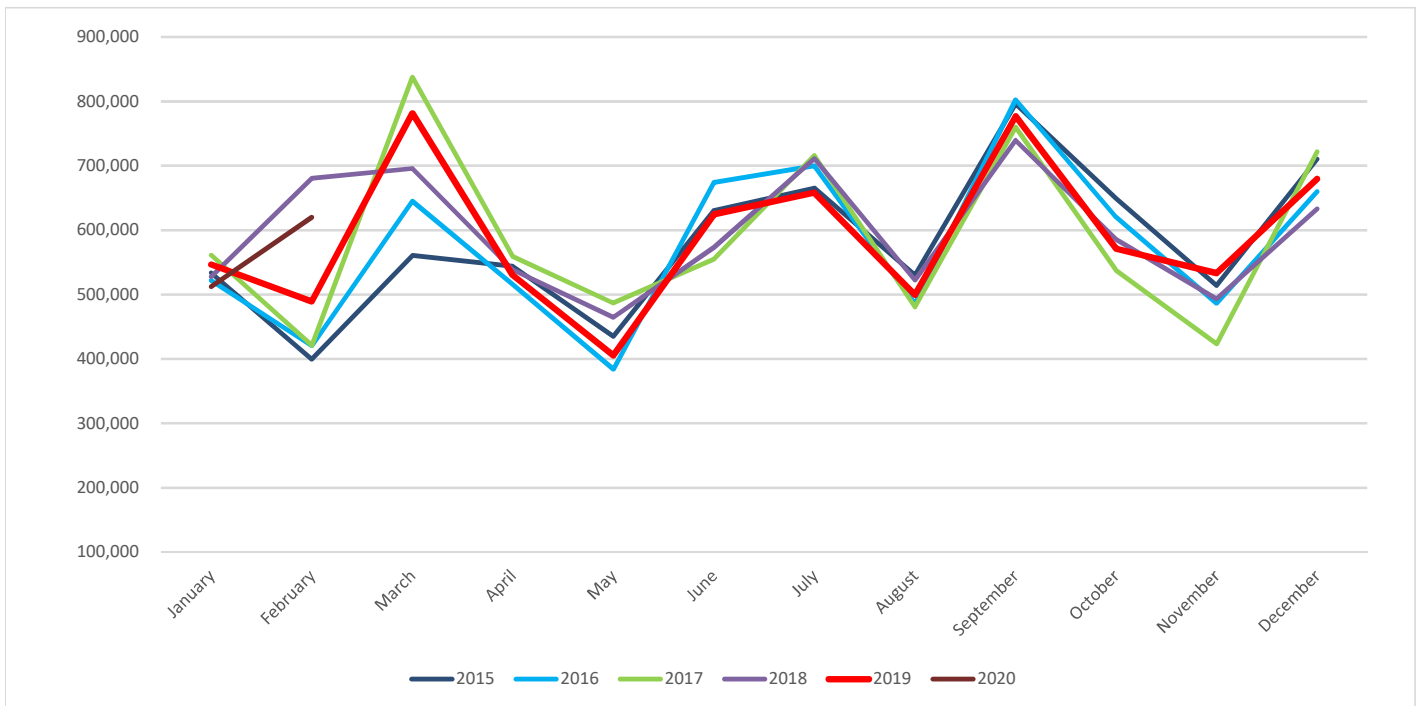


**City of Chesterfield**  
**Statement of Revenues and Expenditures(Cash Basis)**  
**General Fund**  
**FY2020**  
**Month Ended February 14, 2020**

	<u>2020 Budget</u>	<u>2020 YTD Actual</u>	<u>2020 Actual As % of Budget</u>	<u>2019 Actual</u>
<b><u>General Fund Revenues:</u></b>				
Sales Taxes	\$ 6,899,967	\$ 1,132,342	16.4%	\$ 7,097,370
Utility Taxes:				
Gas, Water, and Electricity Taxes	5,950,754	809,766	13.6%	5,732,567
Telephone Taxes	1,110,831	93,577	8.4%	952,711
Licenses and permits	1,580,070	200,252	12.7%	1,289,993
Intergovernmental				
Taxes	4,008,000	1,046,017	26.1%	3,405,548
Grants	-	-	0.0%	-
Charges for services	173,250	19,255	11.1%	129,320
Court fines and forfeitures	821,656	105,369	12.8%	737,309
Other Revenues	660,190	70,300	10.6%	632,515
<b>Total Revenues</b>	<b><u>21,204,718</u></b>	<b><u>3,476,878</u></b>	<b><u>16.4%</u></b>	<b><u>19,977,333</u></b>
<b><u>General Fund Expenditures:</u></b>				
Executive & Legislative	74,225	11,628	15.7%	69,486
Administration	2,434,400	239,911	9.9%	2,066,829
Central Services	1,117,607	40,395	3.6%	1,189,891
Public Services	6,568,496	(30,752)	-0.5%	5,805,274
Capital items for all dept.	370,850	27,172	7.3%	208,003
<b>Total Expenditures</b>	<b><u>10,565,578</u></b>	<b><u>288,354</u></b>	<b><u>2.7%</u></b>	<b><u>9,339,483</u></b>
Transfers In	-	-	0.0%	-
Transfers Out	<b><u>(8,969,694)</u></b>	<b><u>1,013,833</u></b>	<b><u>-11.3%</u></b>	<b><u>(8,433,056)</u></b>

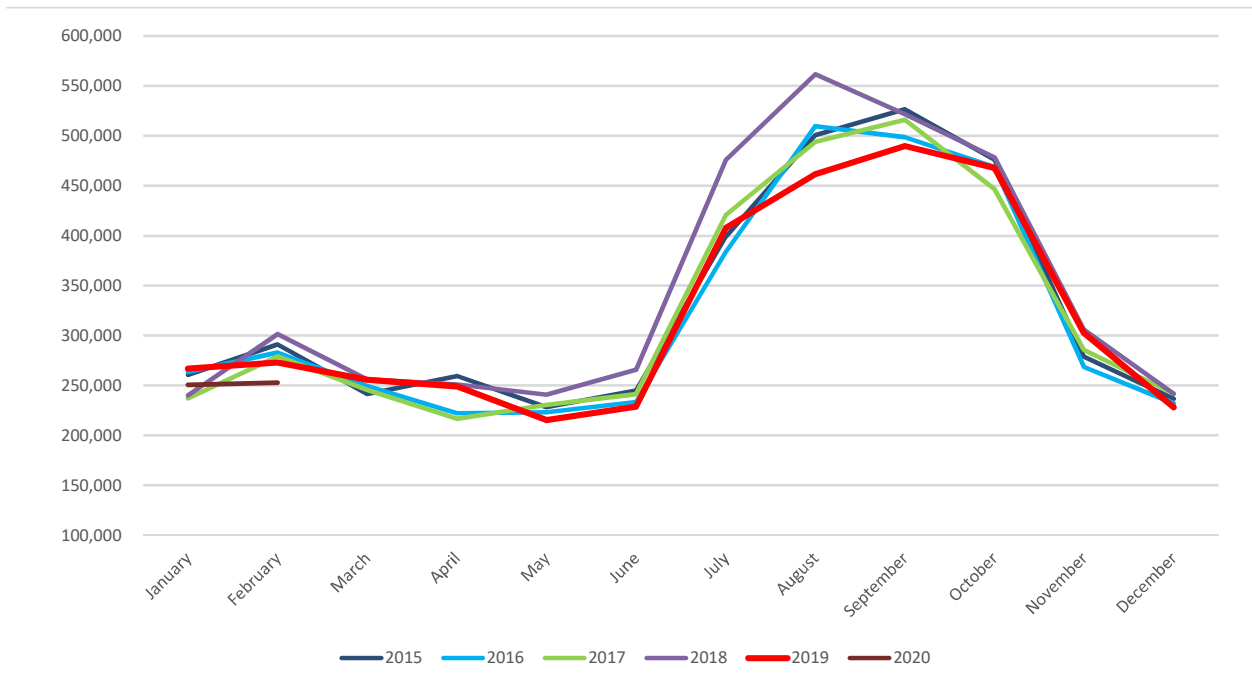
**General Fund  
Sales Tax  
FY's 2015-2020**

Revenues	2015	2016	2017	2018	2019	% incr/-decr from 2018 to 2019	2020	% incr/-decr from 2019 to 2020
January	533,506	521,946	561,167	527,666	546,623	3.59%	512,350	-6.27%
February	399,476	420,419	420,980	680,722	489,247	-28.13%	619,993	26.72%
March	560,648	645,098	837,570	696,023	781,521	12.28%		-100.00%
April	543,960	515,679	559,042	538,378	530,052	-1.55%		-100.00%
May	435,001	384,153	486,840	464,664	405,484	-12.74%		-100.00%
June	630,847	674,131	555,331	573,231	624,799	9.00%		-100.00%
July	665,425	700,054	716,153	711,126	658,266	-7.43%		-100.00%
August	530,264	485,475	480,756	522,633	499,699	-4.39%		-100.00%
September	796,405	802,513	760,229	739,637	777,310	5.09%		-100.00%
October	649,477	620,414	537,883	585,894	571,231	-2.50%		-100.00%
November	513,967	486,407	423,338	493,373	533,344	8.10%		-100.00%
December	710,246	660,240	721,667	632,910	679,794	7.41%		-100.00%
<b>Total</b>	<b>6,969,220</b>	<b>6,916,529</b>	<b>7,060,957</b>	<b>7,166,257</b>	<b>7,097,370</b>	<b>-0.96%</b>	<b>1,132,342</b>	<b>107.15%</b>



**General Fund  
Utility Taxes - Electric  
FY's 2015-2020**

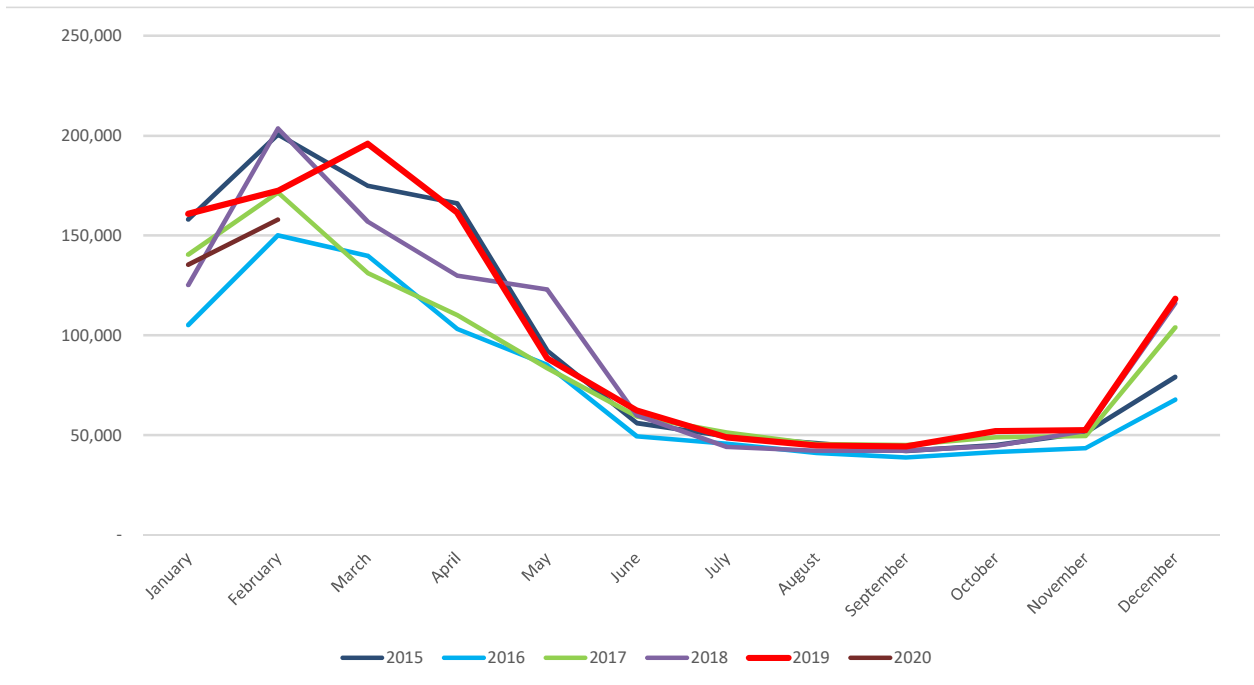
Revenues	2015	2016	2017	2018	2019	% incr/-decr from 2018 to 2019	2020	% incr/-decr from 2019 to 2020
January	260,745	263,384	237,016	239,982	266,881	11.21%	250,541	-6.12%
February	291,066	282,781	279,236	301,329	273,017	-9.40%	252,710	-7.44%
March	241,347	249,342	245,627	255,911	255,832	-0.03%		-100.00%
April	259,487	222,079	216,575	250,957	248,955	-0.80%		-100.00%
May	228,253	223,259	230,454	240,779	215,335	-10.57%		-100.00%
June	244,954	233,277	241,186	265,501	228,520	-13.93%		-100.00%
July	398,980	383,590	420,642	475,558	407,727	-14.26%		-100.00%
August	500,564	509,782	493,852	561,716	461,623	-17.82%		-100.00%
September	526,587	498,584	516,119	521,837	489,852	-6.13%		-100.00%
October	476,134	468,866	446,520	478,362	467,739	-2.22%		-100.00%
November	278,693	268,662	285,617	305,739	302,460	-1.07%		-100.00%
December	236,670	232,147	241,846	241,689	228,173	-5.59%		-100.00%
<b>Total</b>	<b>3,943,481</b>	<b>3,835,754</b>	<b>3,854,691</b>	<b>4,139,360</b>	<b>3,846,113</b>	<b>-7.08%</b>	<b>503,251</b>	<b>88.57%</b>





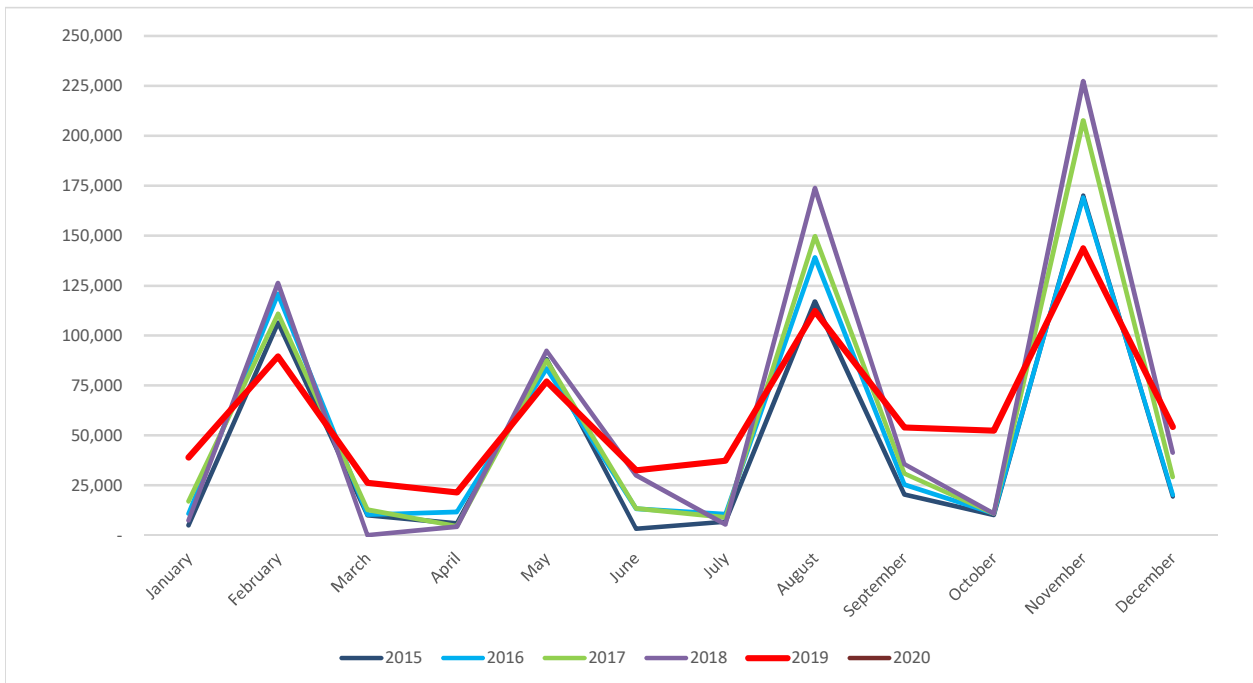
**General Fund  
Utility Taxes - Gas  
FY's 2015-2020**

Revenues	2015	2016	2017	2018	2019	% incr/-decr from 2018 to 2019	2020	% incr/-decr from 2019 to 2020
January	158,047	105,205	140,475	125,137	160,825	28.52%	135,384	-15.82%
February	200,623	150,107	171,528	203,609	172,406	-15.33%	157,902	-8.41%
March	174,909	139,881	131,257	156,894	196,016	24.94%		-100.00%
April	165,974	103,209	109,971	129,827	161,328	24.26%		-100.00%
May	92,475	85,140	83,578	122,955	88,467	-28.05%		-100.00%
June	55,999	49,395	59,383	59,958	62,318	3.94%		-100.00%
July	49,340	45,735	51,352	44,063	48,908	10.99%		-100.00%
August	46,031	41,067	45,505	42,183	44,854	6.33%		-100.00%
September	42,093	38,807	45,083	42,262	44,301	4.82%		-100.00%
October	44,993	41,515	48,858	44,528	51,986	16.75%		-100.00%
November	51,278	43,438	49,561	52,095	52,451	0.68%		-100.00%
December	79,105	67,785	103,950	116,070	118,237	1.87%		-100.00%
<b>Total</b>	<b>1,160,869</b>	<b>911,283</b>	<b>1,040,501</b>	<b>1,139,582</b>	<b>1,202,096</b>	<b>5.49%</b>	<b>293,286</b>	<b>82.36%</b>



**General Fund  
Utility Taxes - Water  
FY's 2015-2020**

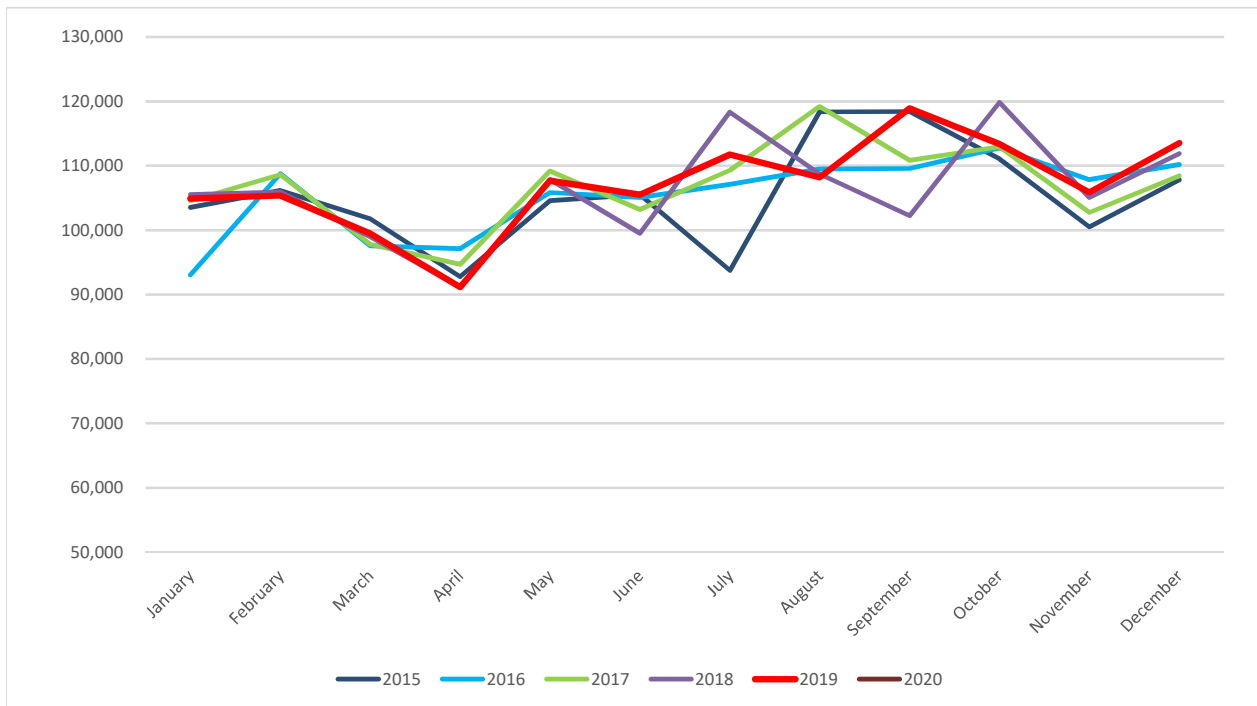
Revenues	2015	2016	2017	2018	2019	% incr/-decr from 2018 to 2019	2020	% incr/-decr from 2019 to 2020
January	5,032	10,747	16,953	7,411	38,865	424.43%	36,464	-6.18%
February	106,428	120,767	110,900	126,284	89,510	-29.12%		-100.00%
March	9,998	10,294	12,775	-	26,147	0.00%		-100.00%
April	5,832	11,640	4,508	4,196	21,402	410.07%		-100.00%
May	88,147	83,498	87,531	92,323	76,974	-16.63%		-100.00%
June	3,214	13,187	13,307	30,053	32,540	8.28%		-100.00%
July	6,664	10,493	8,933	5,323	37,303	600.82%		-100.00%
August	117,058	139,190	149,736	173,803	112,175	-35.46%		-100.00%
September	20,456	25,378	30,894	35,542	54,016	51.98%		-100.00%
October	10,129	10,955	10,802	10,817	52,351	383.97%		-100.00%
November	169,997	169,101	207,731	227,364	143,649	-36.82%		-100.00%
December	19,395	20,163	29,163	41,350	54,196	31.07%		-100.00%
<b>Total</b>	<b>562,349</b>	<b>625,413</b>	<b>683,234</b>	<b>754,464</b>	<b>739,127</b>	<b>-2.03%</b>	<b>36,464</b>	<b>-6.18%</b>





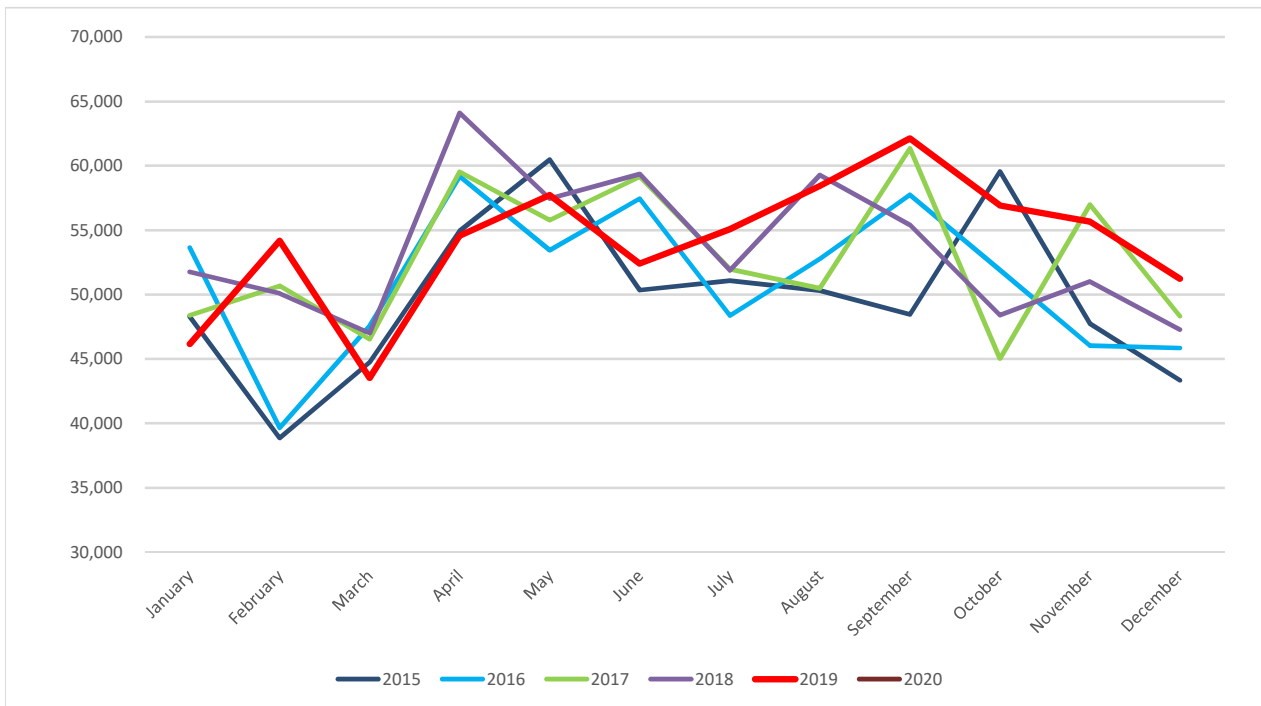
**General Fund  
Motor Fuel Tax  
FY's 2015-2020**

Revenues	2015	2016	2017	2018	2019	% incr/-decr from 2018 to 2019	2020	% incr/-decr from 2019 to 2020
January	103,537	93,065	104,569	105,559	104,895	-0.63%	104,544	-0.34%
February	106,169	108,806	108,656	105,924	105,390	-0.50%		-100.00%
March	101,785	97,573	97,810	98,970	99,498	0.53%		-100.00%
April	92,794	97,135	94,691	91,191	91,166	-0.03%		-100.00%
May	104,584	105,846	109,183	107,858	107,694	-0.15%		-100.00%
June	105,554	105,065	103,232	99,514	105,506	6.02%		-100.00%
July	93,761	107,111	109,317	118,347	111,733	-5.59%		-100.00%
August	118,389	109,491	119,204	108,740	108,221	-0.48%		-100.00%
September	118,428	109,582	110,824	102,242	118,924	16.32%		-100.00%
October	111,075	112,780	112,954	119,851	113,412	-5.37%		-100.00%
November	100,532	107,876	102,739	105,057	105,909	0.81%		-100.00%
December	107,827	110,208	108,431	111,907	113,549	1.47%		-100.00%
<b>Total</b>	<b>1,264,434</b>	<b>1,264,539</b>	<b>1,281,610</b>	<b>1,275,160</b>	<b>1,285,900</b>	<b>0.84%</b>	<b>104,544</b>	<b>-0.34%</b>



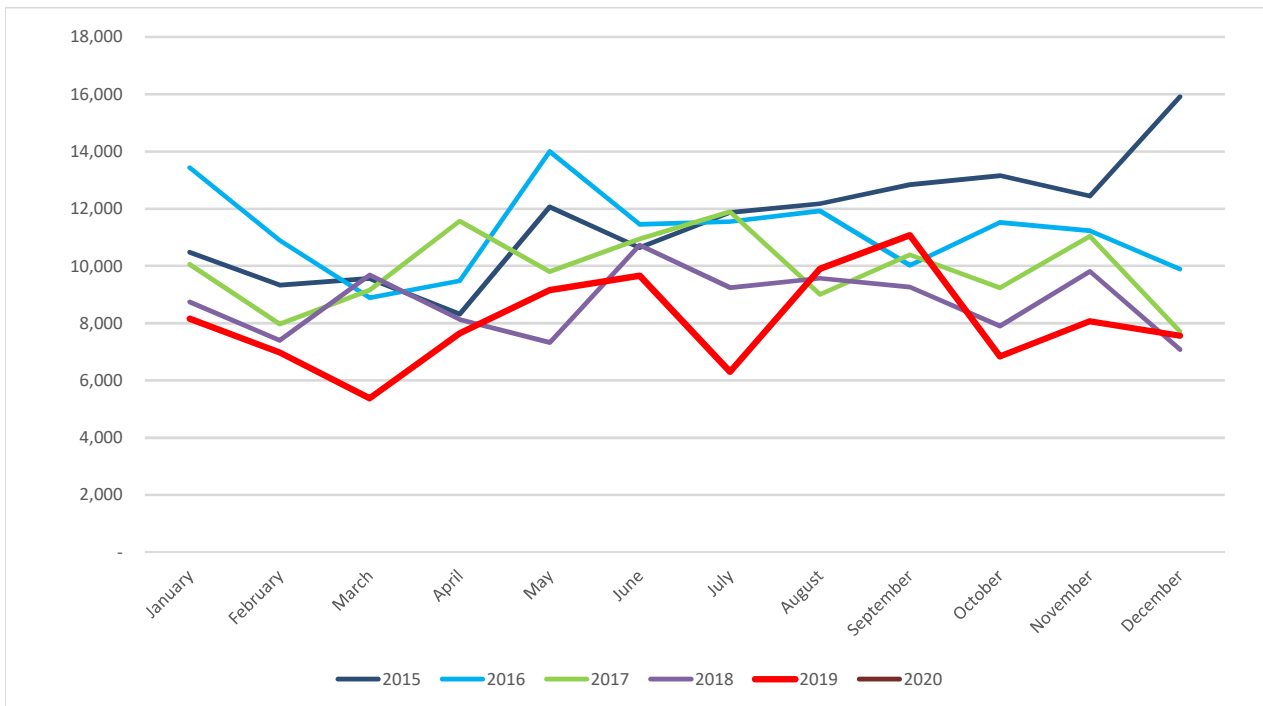
**General Fund  
Motor Vehicle Sales Tax  
FY's 2015-2020**

Revenues	2015	2016	2017	2018	2019	% incr/-decr from 2018 to 2019	2020	% incr/-decr from 2019 to 2020
January	48,306	53,643	48,387	51,766	46,162	-10.83%	50,465	9.32%
February	38,868	39,655	50,672	50,084	54,171	8.16%		-100.00%
March	44,762	47,558	46,534	47,006	43,525	-7.41%		-100.00%
April	54,938	59,176	59,526	64,108	54,562	-14.89%		-100.00%
May	60,483	53,443	55,776	57,447	57,723	0.48%		-100.00%
June	50,354	57,449	59,165	59,360	52,404	-11.72%		-100.00%
July	51,064	48,362	51,974	51,878	55,077	6.17%		-100.00%
August	50,312	52,780	50,494	59,280	58,440	-1.42%		-100.00%
September	48,468	57,750	61,356	55,413	62,126	12.11%		-100.00%
October	59,547	51,916	45,034	48,395	56,932	17.64%		-100.00%
November	47,752	46,031	56,990	51,007	55,666	9.13%		-100.00%
December	43,340	45,854	48,327	47,276	51,226	8.36%		-100.00%
<b>Total</b>	<b>598,193</b>	<b>613,617</b>	<b>634,237</b>	<b>643,020</b>	<b>648,014</b>	<b>0.78%</b>	<b>50,465</b>	<b>9.32%</b>



**General Fund  
Cigarette Tax  
FY's 2015-2020**

Revenues	2015	2016	2017	2018	2019	% incr/-decr from 2018 to 2019	2020	% incr/-decr from 2019 to 2020
January	10,481	13,433	10,061	8,736	8,154	-6.66%	9,404	15.33%
February	9,329	10,894	7,974	7,396	6,971	-5.75%		-100.00%
March	9,561	8,890	9,151	9,683	5,373	-44.51%		-100.00%
April	8,316	9,479	11,571	8,131	7,647	-5.95%		-100.00%
May	12,066	14,002	9,804	7,327	9,153	24.91%		-100.00%
June	10,638	11,454	10,945	10,729	9,655	-10.01%		-100.00%
July	11,867	11,550	11,899	9,242	6,301	-31.82%		-100.00%
August	12,181	11,925	9,008	9,566	9,898	3.46%		-100.00%
September	12,842	10,025	10,388	9,265	11,072	19.50%		-100.00%
October	13,159	11,519	9,236	7,900	6,839	-13.43%		-100.00%
November	12,445	11,233	11,038	9,809	8,068	-17.74%		-100.00%
December	15,912	9,891	7,718	7,079	7,566	6.88%		-100.00%
<b>Total</b>	<b>138,798</b>	<b>134,295</b>	<b>118,794</b>	<b>104,864</b>	<b>96,698</b>	<b>-7.79%</b>	<b>9,404</b>	<b>15.33%</b>



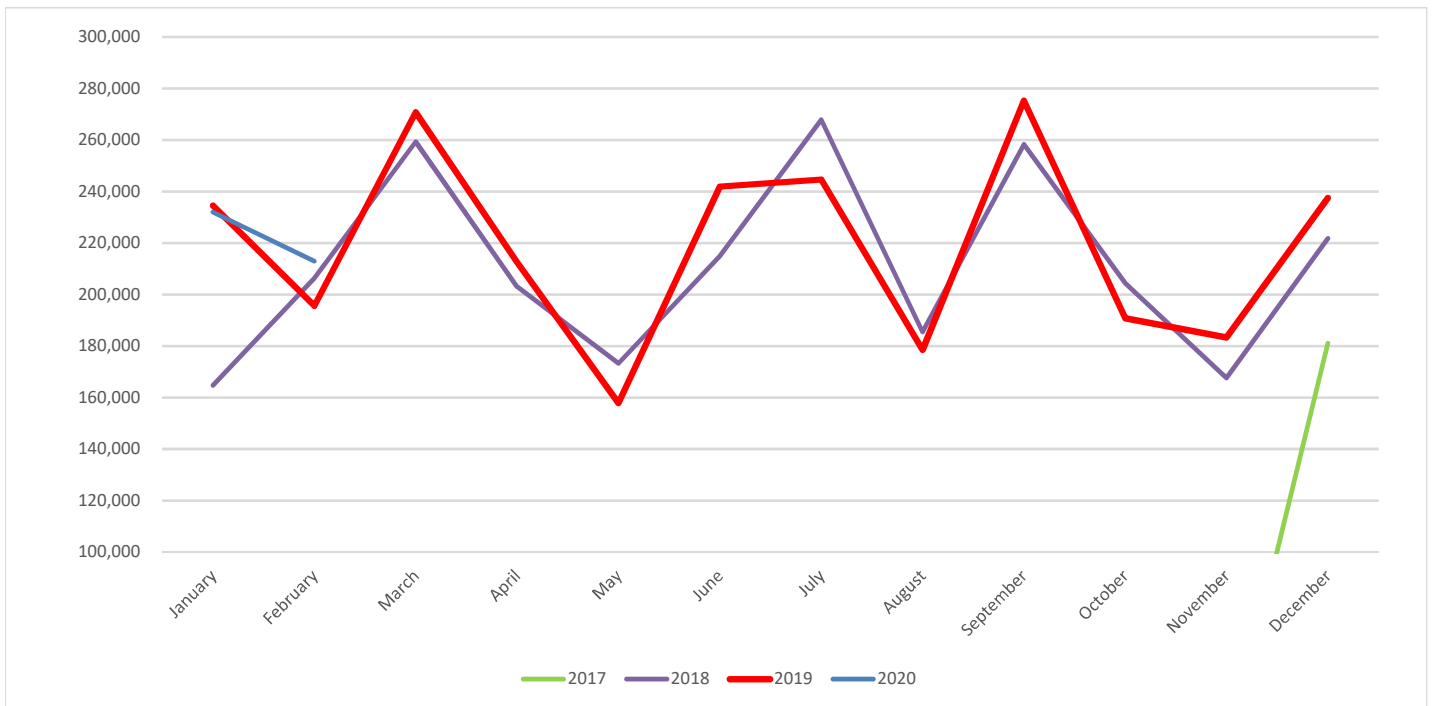
Note: The City receives cigarette tax revenue two months after collection by vendors. Above figures are by month of collection by the city.

**City of Chesterfield**  
**Statement of Revenues and Expenditures(Cash Basis)**  
**Public Safety Fund**  
**FY2020**  
**Month Ended February 14, 2020**

	<u>2020 Budget</u>	<u>2020 YTD Actual</u>	<u>2020 Actual As % of Budget</u>	<u>2019 Actual</u>
<b><u>General Fund Revenues:</u></b>				
Sales Taxes	\$ 2,670,500	\$ 444,995	16.7%	\$ 2,623,632
Other	\$ 504,760	\$ 25,063	5.0%	\$ 366,681
Transfers from GF	\$ 8,377,311	\$ 875,718	10.5%	\$ 7,464,825
<b>Total Revenues</b>	<b><u>11,552,571</u></b>	<b><u>1,345,776</u></b>	<b><u>11.6%</u></b>	<b><u>10,455,138</u></b>
<b><u>Public Safety Fund Expenditures:</u></b>				
Police	11,552,571	1,345,776	11.6%	10,455,138
<b>Total Expenditures</b>	<b><u>11,552,571</u></b>	<b><u>1,345,776</u></b>	<b><u>11.6%</u></b>	<b><u>10,455,138</u></b>

**Public Safety Fund  
Prop P Sales Tax  
FY's 2015-2020**

Revenues	2015	2016	2017	2018	2019	% incr/-decr from 2018 to 2019	2020	% incr/-decr from 2019 to 2020
January				164,751	234,611	42.40%	232,003	-1.11%
February				206,280	195,645	-5.16%	212,992	8.87%
March				259,273	270,763	4.43%		-100.00%
April				203,078	212,548	4.66%		-100.00%
May				173,349	157,889	-8.92%		-100.00%
June				214,913	241,967	12.59%		-100.00%
July				267,937	244,721	-8.66%		-100.00%
August				185,476	178,514	-3.75%		-100.00%
September				258,311	275,284	6.57%		-100.00%
October				204,404	190,788	-6.66%		-100.00%
November			20,030	167,605	183,373	9.41%		-100.00%
December			181,096	221,792	237,529	7.10%		-100.00%
<b>Total</b>	-	-	201,126	2,527,168	2,623,632	3.82%	444,995	89.67%



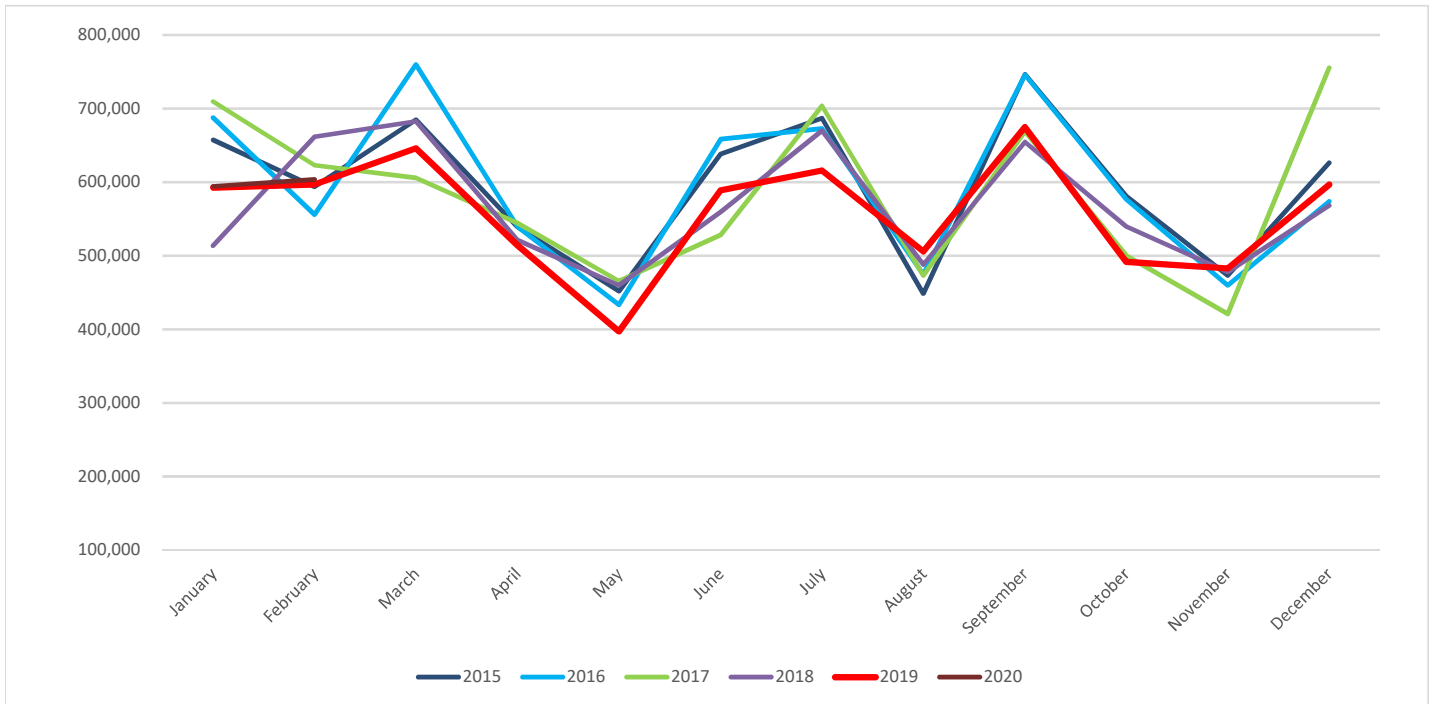


**City of Chesterfield**  
**Statement of Revenues and Expenditures(Cash Basis)**  
**Parks Sales Tax Fund**  
**FY2020**  
**Month Ended February 14, 2020**

	<b>2020 Budget</b>	<b>2020 YTD Actual</b>	<b>2020 Actual As % of Budget</b>	<b>2019 Actual</b>
<b>Revenues:</b>				
Sales Tax	\$ 6,674,640	\$ 1,197,984	17.95%	6,704,589
Intergovernmental	-	-	0.00%	24,800
Parks and Recreation	2,134,665	51,622	2.42%	2,043,627
Other Revenues	80,741	2,977	3.69%	80,033
<b>Total Revenues</b>	<b>8,890,046</b>	<b>1,252,583</b>	<b>14.09%</b>	<b>8,853,049</b>
<b>Expenditures:</b>				
Parks	5,811,941	370,543	6.38%	5,364,202
<b>Transfers In/Out (net)</b>	<b>2,991,699</b>	<b>-</b>	<b>0.00%</b>	<b>2,193,081</b>

**Park Sales Tax Fund  
Park Sales Tax  
FY's 2015-2020**

Revenues	2015	2016	2017	2018	2019	% incr/-decr from 2018 to 2019	2020	% incr/-decr from 2019 to 2020
January	657,331	687,723	709,661	513,770	592,664	15.36%	594,364	0.29%
February	593,701	556,051	623,095	662,025	596,918	-9.83%	603,620	1.12%
March	684,948	759,830	605,786	682,606	646,180	-5.34%	-100.00%	-100.00%
April	539,311	539,666	544,249	521,473	513,996	-1.43%	-100.00%	-100.00%
May	452,054	433,382	465,725	459,803	397,312	-13.59%	-100.00%	-100.00%
June	638,303	658,466	528,371	559,493	589,028	5.28%	-100.00%	-100.00%
July	686,837	672,745	703,775	670,055	615,709	-8.11%	-100.00%	-100.00%
August	448,702	474,596	473,327	488,123	505,833	3.63%	-100.00%	-100.00%
September	746,535	746,046	669,048	654,621	675,012	3.11%	-100.00%	-100.00%
October	581,019	576,790	500,332	540,057	491,866	-8.92%	-100.00%	-100.00%
November	473,142	459,863	420,921	478,083	482,983	1.02%	-100.00%	-100.00%
December	626,576	573,959	755,509	568,331	597,087	5.06%	-100.00%	-100.00%
<b>Total</b>	<b>7,128,459</b>	<b>7,139,117</b>	<b>6,999,799</b>	<b>6,798,440</b>	<b>6,704,589</b>	<b>-1.38%</b>	<b>1,197,984</b>	<b>102.14%</b>

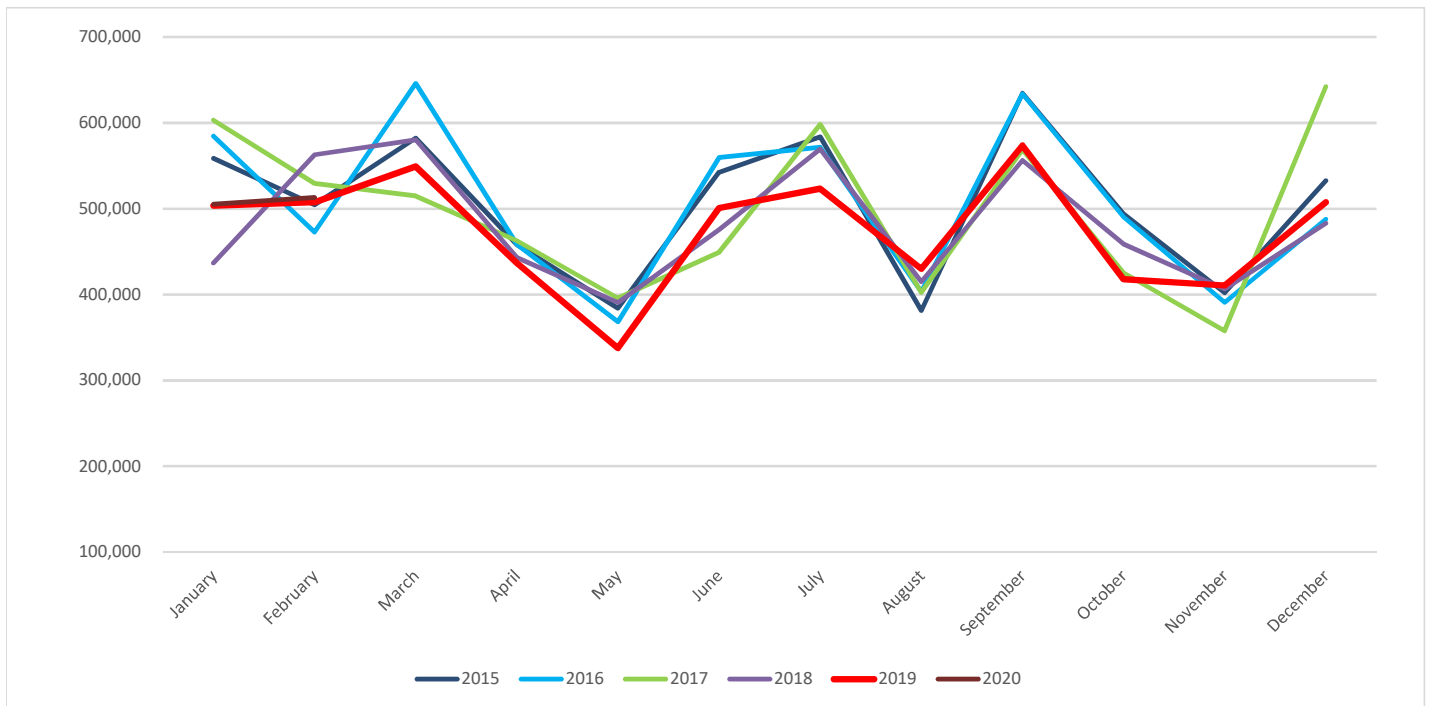


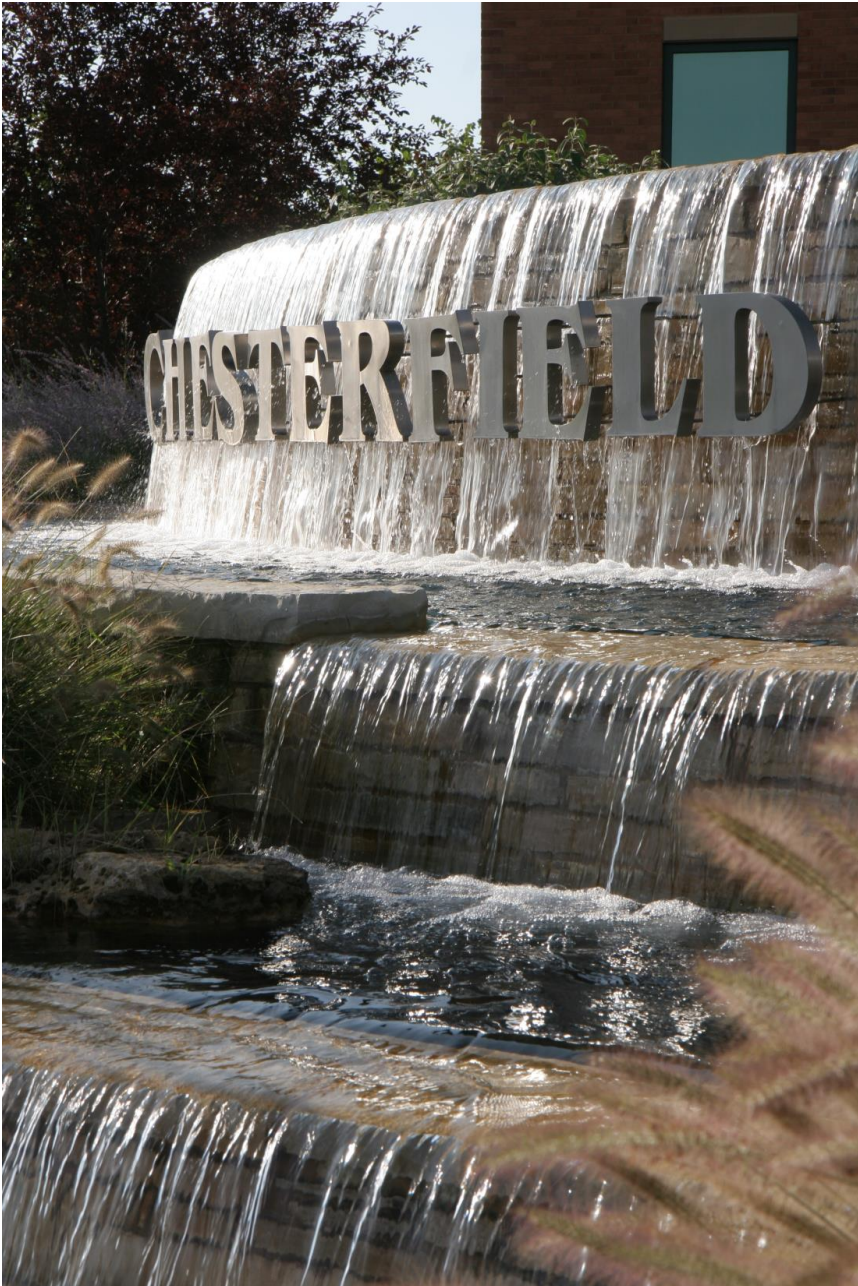
**City of Chesterfield**  
**Statement of Revenues and Expenditures(Cash Basis)**  
**Capital Sales Tax Fund**  
**FY2020**  
**Month Ended February 14, 2020**

	<u>2020 Budget</u>	<u>2020 YTD Actual</u>	<u>2020 Actual As % of Budget</u>	<u>2019 Actual</u>
<b>Revenues:</b>				
Sales Tax	\$ 5,679,178	\$ 1,018,287	17.93%	5,698,904
Other Revenues	-	-	0.00%	111,554
<b>Total Revenues</b>	<u>5,679,178</u>	<u>1,018,287</u>	<u>17.93%</u>	<u>5,810,458</u>
<b>Expenditures:</b>				
Public Works	<u>5,754,546</u>	<u>60,869</u>	<u>1.06%</u>	<u>6,044,379</u>
<b>Transfers In</b>	-	-	0.00%	-
<b>Transfers Out</b>	-	-	0.00%	1,885,169
<b>Net Transfers</b>	<u>-</u>	<u>-</u>	<u>0.00%</u>	<u>(1,885,169)</u>

**Capital Improvement Sales Tax Fund**  
**Capital Improvement Sales Tax**  
**FY's 2015-2020**

Revenues	2015	2016	2017	2018	2019	% incr/-decr from 2018 to 2019	2020	% incr/-decr from 2019 to 2020
January	558,734	584,565	603,212	436,705	503,765	15.36%	505,210	0.29%
February	504,664	472,643	529,633	562,765	507,380	-9.84%	513,077	1.12%
March	582,218	645,884	514,921	580,217	549,253	-5.34%		-100.00%
April	458,417	458,737	462,621	443,254	436,897	-1.43%		-100.00%
May	384,247	368,387	395,990	390,834	337,716	-13.59%		-100.00%
June	542,562	559,701	449,118	475,569	500,675	5.28%		-100.00%
July	583,819	571,837	598,209	569,551	523,353	-8.11%		-100.00%
August	381,400	403,411	402,355	414,904	429,959	3.63%		-100.00%
September	634,556	633,729	568,691	556,429	573,760	3.11%		-100.00%
October	493,871	490,405	425,282	459,046	418,086	-8.92%		-100.00%
November	402,178	390,999	357,784	406,371	410,537	1.03%		-100.00%
December	532,592	487,865	642,183	483,081	507,524	5.06%		-100.00%
<b>Total</b>	<b>6,059,258</b>	<b>6,068,163</b>	<b>5,950,000</b>	<b>5,778,725</b>	<b>5,698,904</b>	<b>-1.38%</b>	<b>1,018,287</b>	<b>102.14%</b>





# Financial Update

February 27, 2020



# February 2020 YTD Sales Tax Revenues (Cash Basis)

- General Fund Pooled Tax (\$1,132,342)
  - \$96K (9.31%) higher than 2019 (\$1,035,870)
- Public Safety Fund Prop P Tax (\$444,995)
  - \$15K (3.43%) higher than 2019 (\$430,256)
- Parks Sales Tax Fund (\$1,197,984)
  - \$8K (0.71%) higher than 2019 (\$1,189,582)
- Capital Improvement Sales Tax Fund (\$1,018,287)
  - \$7K (0.71%) higher than 2019 (\$1,011,145)
- **Total Sales Tax YTD (\$3,793,609)**
  - \$127K (3.46%) higher than 2019 (\$3,666,853)
  - Exceeds 2020 budget expectations; however monthly budget proportions are estimated from prior periods and should not be given significant weight in comparing receipts

# February 2020 YTD Utility Tax Revenues (Cash Basis)

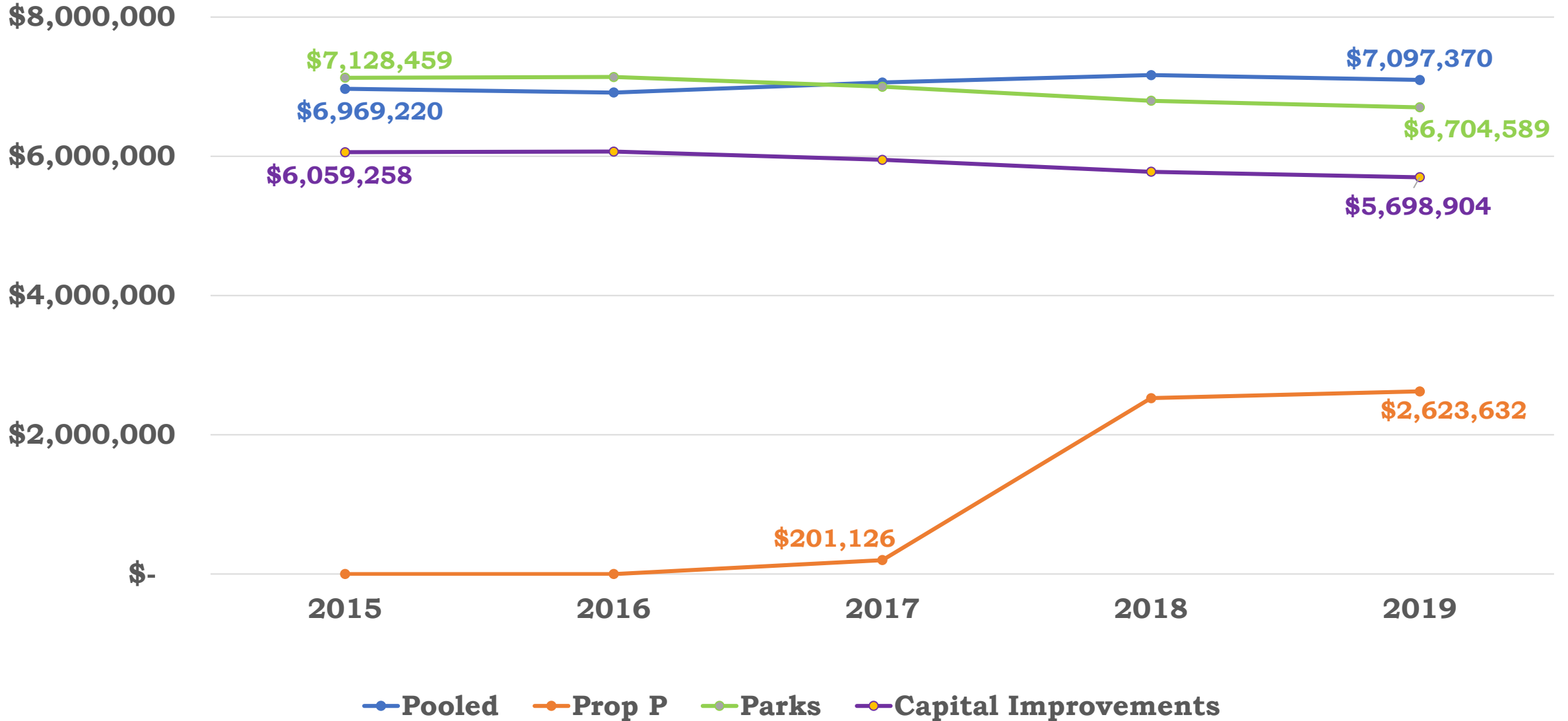
- Electric Taxes (\$503,251)
  - \$37K (-6.79) lower than 2019 (\$539,898)
- Gas Taxes (\$294,193)
  - \$40K (-11.71%) lower than 2019 (\$333,231)
- Telephone Taxes (\$153,634)
  - \$57K (-27.22%) lower than 2019 (\$211,095)
- Water Taxes (\$107,389)
  - \$21K (-16.35%) lower than 2019 (\$128,375)
- **Total Utility Taxes YTD (\$1,058,468)**
  - \$154K (-12.71) lower than 2019 YTD (\$1,212,598)

# February 2020 YTD Intergovernmental Revenues (Cash Basis)

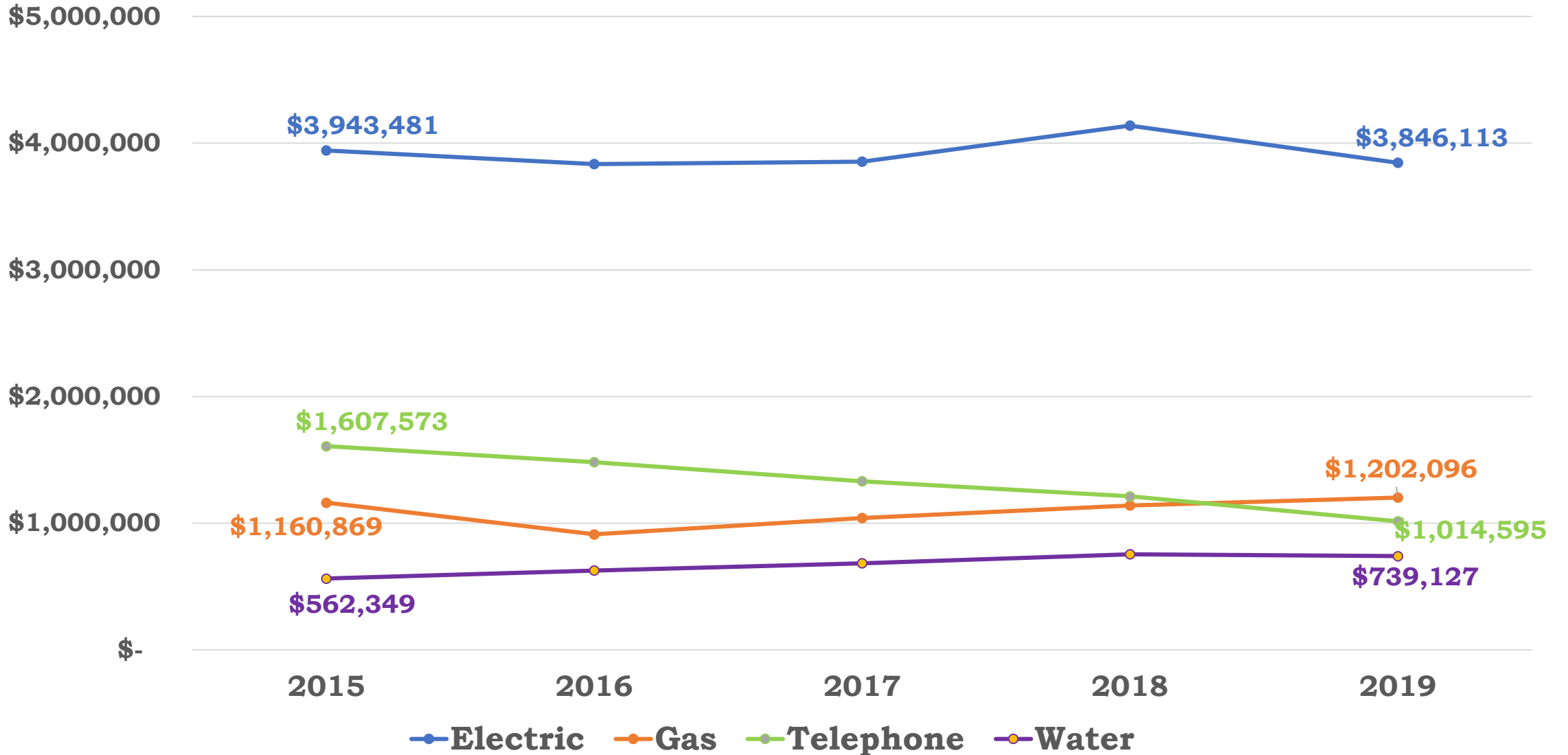
- Motor Fuel Tax (\$210,594)
  - \$0K (0.15%) higher than 2019 (\$210,285)
- Motor Vehicle Sales Tax (\$104,999)
  - \$5K (4.65%) higher than 2019 (\$46,162)
- Cigarette Tax (\$15,085)
  - \$0K (-0.27%) lower than 2019 (\$15,125)
- County Road & Bridge Tax (\$24,184)
  - \$13K (-34.24%) lower than 2019 (\$36,775)
- **Total Intergovernmental Revenues YTD (\$354,862)**
  - \$8K (-2.11%) lower than 2019 (\$362,518)



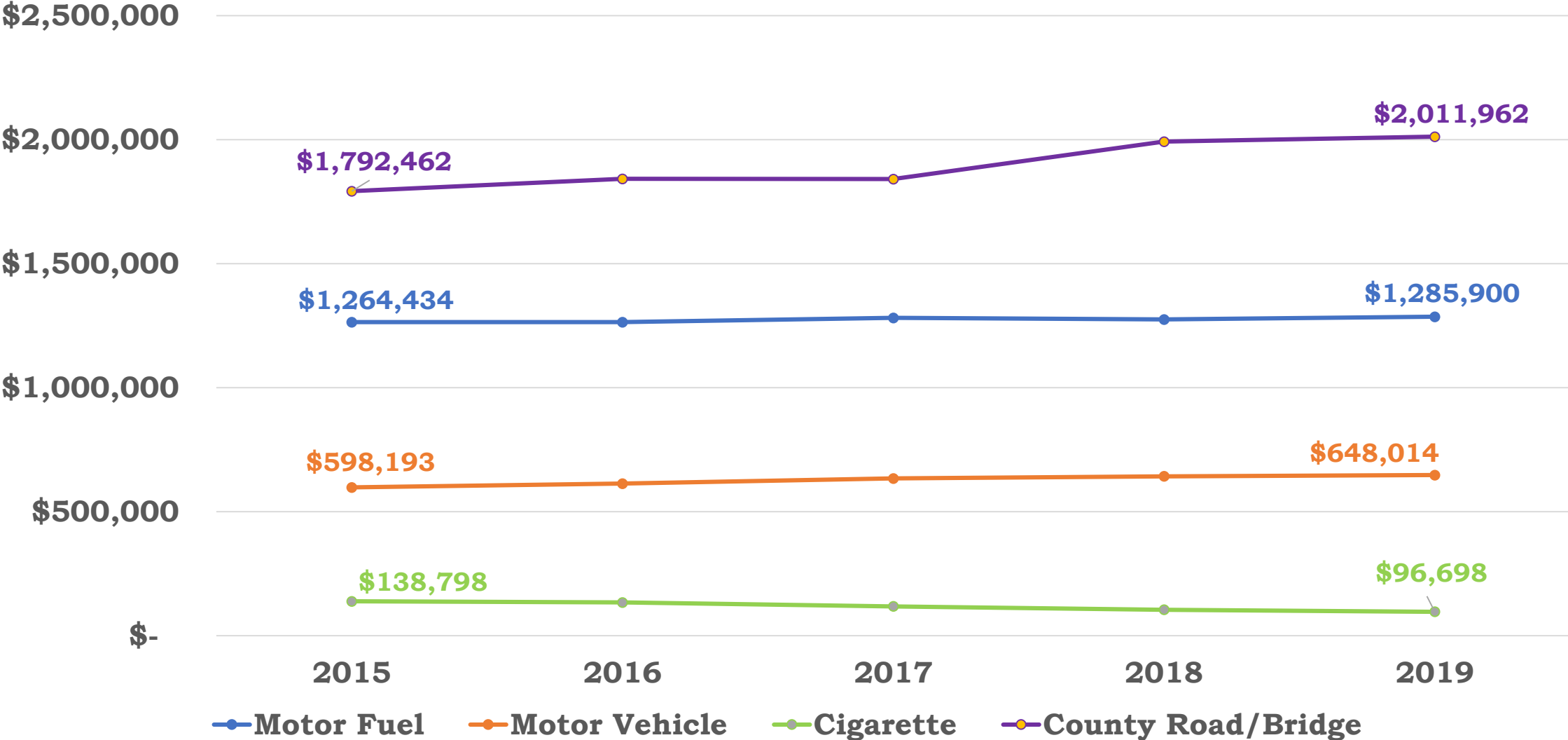
# Sales Tax Revenues



# Utility Taxes



# Intergovernmental Taxes



# Key Insights and Observations

- Use Tax and Wayfair Legislation
- Experienced and knowledgeable staff
- Annual Awards
  - GFOA Certificate of Achievement for Excellence in Financial Reporting since 1989
  - GFOA Distinguished Budget Presentation Award since 1991
- City Maintains Over 40% Fund Reserves at 12/31/19