

Memorandum

Department of Public Services

TO: Michael G. Herring, City Administrator

FROM: ^{MOG} Michael O. Geisel, Director of Public Services

DATE: November 23, 2015

RE: F5 and F6 safety improvements



Attached hereto is a memorandum from Parks, Recreation and Arts Director – Tom McCarthy, wherein he describes the need and solution to relocate and improve the F5 and F6 athletic fields at the CVAC. These were never part of the contracted improvements to the CVAC, but F5 was added due to the demand for a smaller, youth development field. Initially, this field was located between the D & E quads, but it simply was not suitable in that location and frequently interfered with the adjacent full size fields. These fields were initially conceived and constructed by city staff as temporary facilities, but the demand has been continuous, and that level of use has led to several safety concerns generally due to the age of the participants using this field, and the proximity to the access road serving the Kurtz topsoil facility.

As described by Mr. McCarthy, these field safety and capacity issues can be addressed in-house due to the ongoing cooperation between the street and parks division maintenance personnel. As a testimony to the need and importance of these improvements, the Chesterfield Baseball & Softball Association has pledged \$25,000 towards these improvements if they can be readied by the spring practice season, and an additional \$5,000 if the City is successful in obtaining Corps approval to construct shade covers as dugouts.

Mr. McCarthy fully describes the need and the physical improvements proposed. **I concur with Mr. McCarthy and request that this item be placed on the next Parks, Recreation and Arts Committee agenda for consideration. Specifically, the Department is requesting a transfer of \$75,000 from the Parks Fund – Fund Reserves, amounts over the 40% policy threshold, which will be directly offset by CBSA’s cash contribution of \$30,000 at completion in the spring of 2016. After reimbursement by CBSA, the net cost of these improvements completed in-house, will not exceed \$45,000.**

As also provided in Mr. McCarthy’s memorandum, the Parks Fund – Fund Reserves currently is \$377,735 above the 40% reserve policy threshold

If you have any questions or require additional information, please advise.

ohid 11/29/15
JSS

MEMORANDUM

TO: Mike Geisel, Director of Public Services
FROM: Thomas McCarthy CPRP, Parks, Recreation and Arts Division
DATE: November 12, 2015
SUBJECT: Chesterfield Valley F5/F6 Improvements



Mike, attached you will find a bullet point list of improvements we would like to do to improve the safety and use of the F5 baseball field and the addition of another training league game baseball field for the overall Chesterfield Athletic Complex. The primary benefactors of these field improvements would be the Chesterfield Baseball and Softball Association. CBSA realizes the need for the additional fields and is willing to help with the overall construction cost with a donation of \$25,000. If I can get the approval from the CORPS to install simple dugout covers on the two fields to shade the kids when they are on the team benches, they would be willing to give us another \$5,000. These covers would be basic four poles and mesh cover. We have had to eliminate the current use of F5 for games and practices as the risk for the youth is too high with no barrier between Kurtz Road and the F5 field. Parking on Kurtz has been a struggle and with the trucks going to and from the Kurtz yard, we have had several near accidents which led me to close the F5 field until we can make the area safer for the kids. I have also included a budget breakdown and rendering which I hope gives clarification on exactly what we are proposing. Bob Welsh and David Human from the Levee District are okay with the improvements. You will find the approval letter from Mathew J Hunn from the Army Corps of Engineers and the donation letter commitment form CBSA.

The improvements will be a combination of our Parks maintenance staff doing the field work, Public Works will coordinate the gravel parking lot and road enhancements per Jim Eckrich's direction, and we will have the fence contracted out along Kurtz Road and the gravel road. Our overall goal is to work on this enhancement over the fall/winter months and get this completed prior to the 2016 spring baseball/softball season.

F5 improvements

- Add a four-foot chain link fence (371' long) along Kurtz Road from the northwest side entrance to near the F quad, north to the gravel road and then 168.5' east along the gravel road to the new gravel parking lot. This would create a safety barrier for the kids so they won't be running across Kurtz Road to the F5 field and would steer parents and kids to the parking lot or through the main F quad. This, we hope, will also alleviate parents parking on Kurtz Road and dropping their kids off.
- F5 field would be enlarged and moved north, closer to the hillside and gravel road. It would now be able to be used as a game field for the under six and seven year old kids.
- F6 would be added to help CBSA with the growing demand for the younger kids' game fields. Currently they use Practice Field 8, which is very small, and was never intended to

be a game field. Plus we get a multitude of complaints from the parents that the bathrooms are so far away and there is no convenient concession stand.

- Add additional gravel to create a parking lot area which would allow us to park 30-35 vehicles back near the F5 field. We would need approximately 300 additional tons of 1" minus for the parking lot area and fabric for the parking lot to meet.
- Install a granite sand walking path from the current F quad between fields 2 & 3 out to the parking lot. When time permits, add additional concrete between the F quad 2 and 3 fields to the fence line to reduce the gravel path.
- Future road expansion would be to install a permanent asphalt road that would loop around the east side of the F quad and connect with the main road that we call Parks Drive. This would be for a future project. As of now, we don't have the money for this.
- Install a temporary backstop and fence along the first and third base line of F5 and F6.
- Re-grade and install sod and add additional dirt to infield on F5.

Budget Breakdown

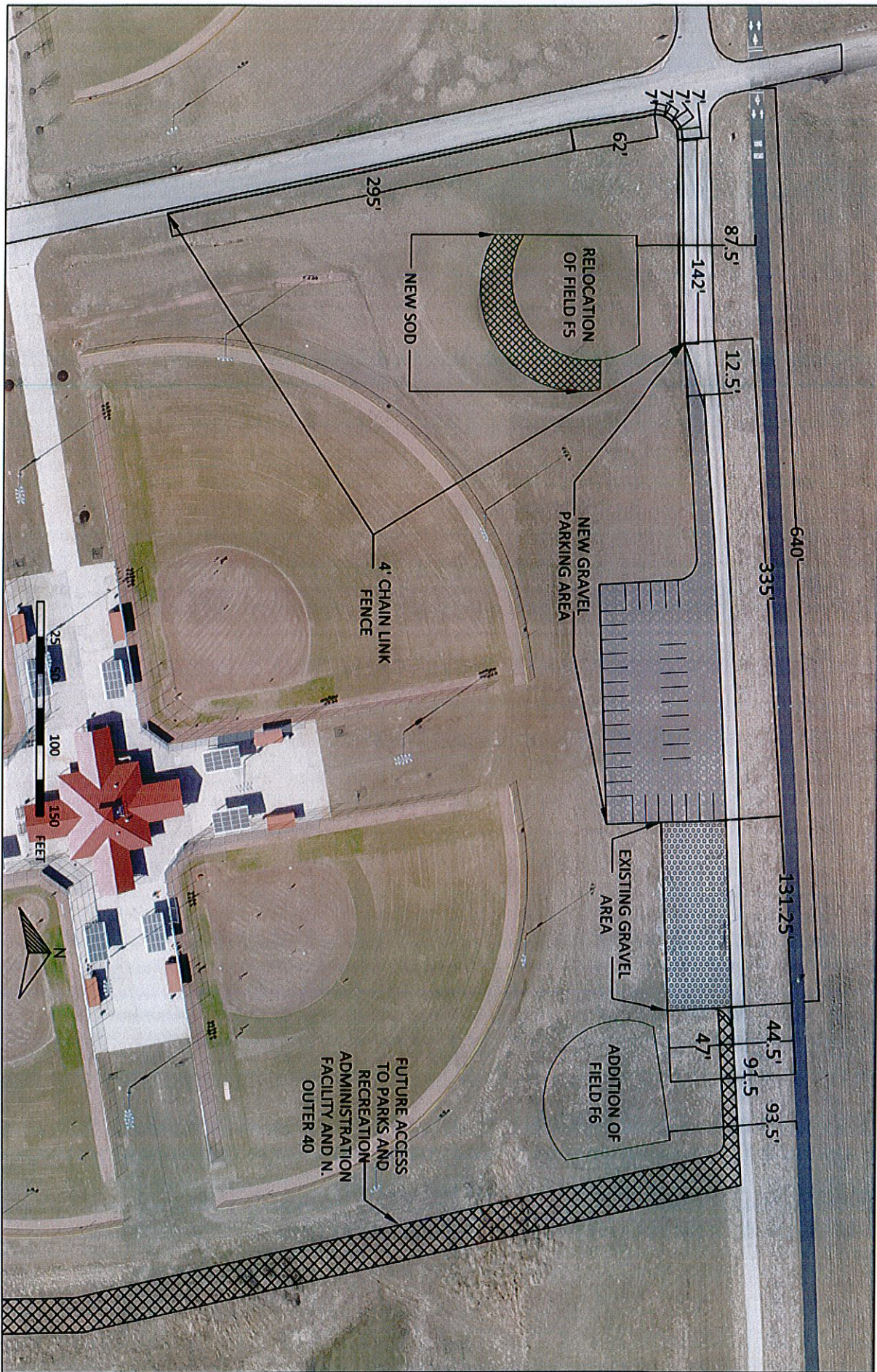
• 540 feet of four foot chain link fence installed	\$12,000
• Additional parking area in gravel with fabric per the Levee district	\$20,000
• Granite sand path from the F quad to the new parking lot	\$ 1,500
• Additional concrete in the F quad between fields 2 & 3	\$ 5,000
• Additional dirt to level out fields	\$ 7,500
• Two back stops with fencing down first and third base lines	\$ 5,000
• Sod work needed for current F5 field	\$ 1,500
• Benches, bleachers and trash cans for both fields	\$ 5,000
• Granite sand for walking paths from the main F quad to fields F5 & F6	\$ 2,200
• Dugout awnings	\$ 8,000
• 10% contingency	<u>\$ 6,770</u>
Total	\$74,470

Subtract Chesterfield Baseball Softball Contribution \$30,000

Total request to fund the F5 & F6 improvements \$44,470

Finance Director Craig White has updated the Parks Fund –Fund Reserve account and we have \$377,735 above the 40% reserve policy as of October 7, 2015.

Accordingly, I would like to request that this information be forwarded to the Parks, Recreation and Arts Committee of Council, in hopes of a positive recommendation to transfer an amount not to exceed \$44,470 from the Excess Parks Fund- Fund Reserve, above the 40% reserve policy, to provide for the construction funds to move forward with these park improvements.



SCALE 3/16" = 1'

SHEET NO. 1

Chesterfield Valley Athletic Center
 Site Plan for Gravel Parking Area, Fence, and Sod Improvements

600 CHESTERFIELD PARKWAY W
 CHESTERFIELD, MO 63017
 PH: 636-837-4700
 FAX: 636-837-4798

To: David R. Human, Leslie J. Wienstraer From: Robert W. Welsch
Monarch-Chesterfield Levee District Stantec Consulting Services
File: Stanlec Project No. 175605004 (448) Date: August 18, 2015

Reference: Review of CVAC-F Quad Improvements, Site Plan for Gravel Parking Area, Fence, and Sod Improvements (02/15/15), City of Chesterfield, Monarch-Chesterfield Levee District, MSD Ref# P-XXXXXXXX-XX, Stantec Project No. 175605004 (448)

We have reviewed the proposed CVAC-F Quad Improvements, Site Plan for Gravel Parking Area, Fence, and Sod Improvements (02/15/15), prepared by The City of Chesterfield. The site is located north of North Outer Forty, east of Spirit of St. Louis Blvd., at the northeast corner of the Chesterfield Valley Athletic Complex. The proposed improvements include: fencing, parking and field areas. (N XXXXXXXX.XXX/E XXXXXX.XXXX)

We have received a letter from the USACE dated 08/17/15 (copies of which are attached) regarding project approval. As such, the project is approved for construction by the Monarch-Chesterfield Levee District. Prior to any asphalt roadway construction, as discussed in the USACE letter, please provide a roadway pavement section for review.

Upon completion, please provide as-built construction drawings and specifications, signed and sealed by the design engineer or City of Chesterfield representative, submitted to the Monarch-Chesterfield Levee District.

As further design plans and construction specifications are developed for any site improvements, they should be forwarded to the Monarch-Chesterfield Levee District for review. All site improvements are subject to review/approval by the USACE St. Louis District under Federal Statute 33 U.S.C. Section 408 if necessary.

Should you have any questions, or require additional information, please feel free to contact me. Thank you.

c. Jim Eckrich (Chesterfield 636-537-4746)
Tom McCarthy (Chesterfield 636-812-9503)
Michael Geisel (Chesterfield 636-537-4769)
Matthew Hunn (USACE 314-331-8568)
Rachel Lopez (USACE 314-331-8425)

Attachment: 8/17/15 USACE approval



DEPARTMENT OF THE ARMY
ST. LOUIS DISTRICT, CORPS OF ENGINEERS
1222 SPRUCE STREET
ST. LOUIS, MISSOURI 63103-2633

August 17, 2015

Readiness Branch

SUBJECT: Permit OD-R 15-018, Improvements to Chesterfield Valley Athletic Complex (CVAC), Monarch-Chesterfield Levee District, Chesterfield, MO

Mr. David R. Human
Attorney
Husch & Eppenberger, LLC
Monarch-Chesterfield Levee District
190 Carondelet Plaza, Suite 600
St. Louis, MO 63105

Dear Mr. Human:

The St. Louis District has reviewed the City of Chesterfield's submitted plan for the CVAC improvements which include enlarging and relocating field F5; addition of field F6; addition of a four foot fence along Kurtz Road and the existing gravel road; addition of a gravel parking area; future road expansion; and addition of new sod, dirt, and backstop at field F5. The St. Louis District has no concerns with the improvements as all improvements will be constructed above the net berm section. Prior to construction of the future asphalt road expansion, a cross section and details of the asphalt road need to be submitted to the St. Louis District for approval.

If required, a permit under Section 404 of the Clean Water Act issued by the St. Louis District Corps of Engineers Regulatory Office will be sent under a separate cover to the applicant.

If you have any questions regarding this action, please contact Matt Hunn, Chief, Readiness Branch, at (314) 331-8569 / Matthew.J.Hunn@usace.army.mil.

Sincerely,

Matthew J. Hunn, P.E.
Chief, Readiness Branch

cc:
Bob Welsch, P.E., Stantec
