

PREPARED BY:
 SITE DEVELOPMENT CONCEPT PLAN FOR:

MERCY HEALTH CAMPUS
 CITY OF CHESTERFIELD
 ST. LOUIS COUNTY, MISSOURI

OWNER:
MERCY HEALTH SYSTEM
 14528 South Outer Forty,
 Suite 100
 Chesterfield, MO 63017
 Attn: Terry F. Boder
 Phone: 314-628-3656

11/16/12
 E-25116
 CIVIL ENGINEER
 CERTIFICATE OF AUTHORITY
 NUMBER: 000996

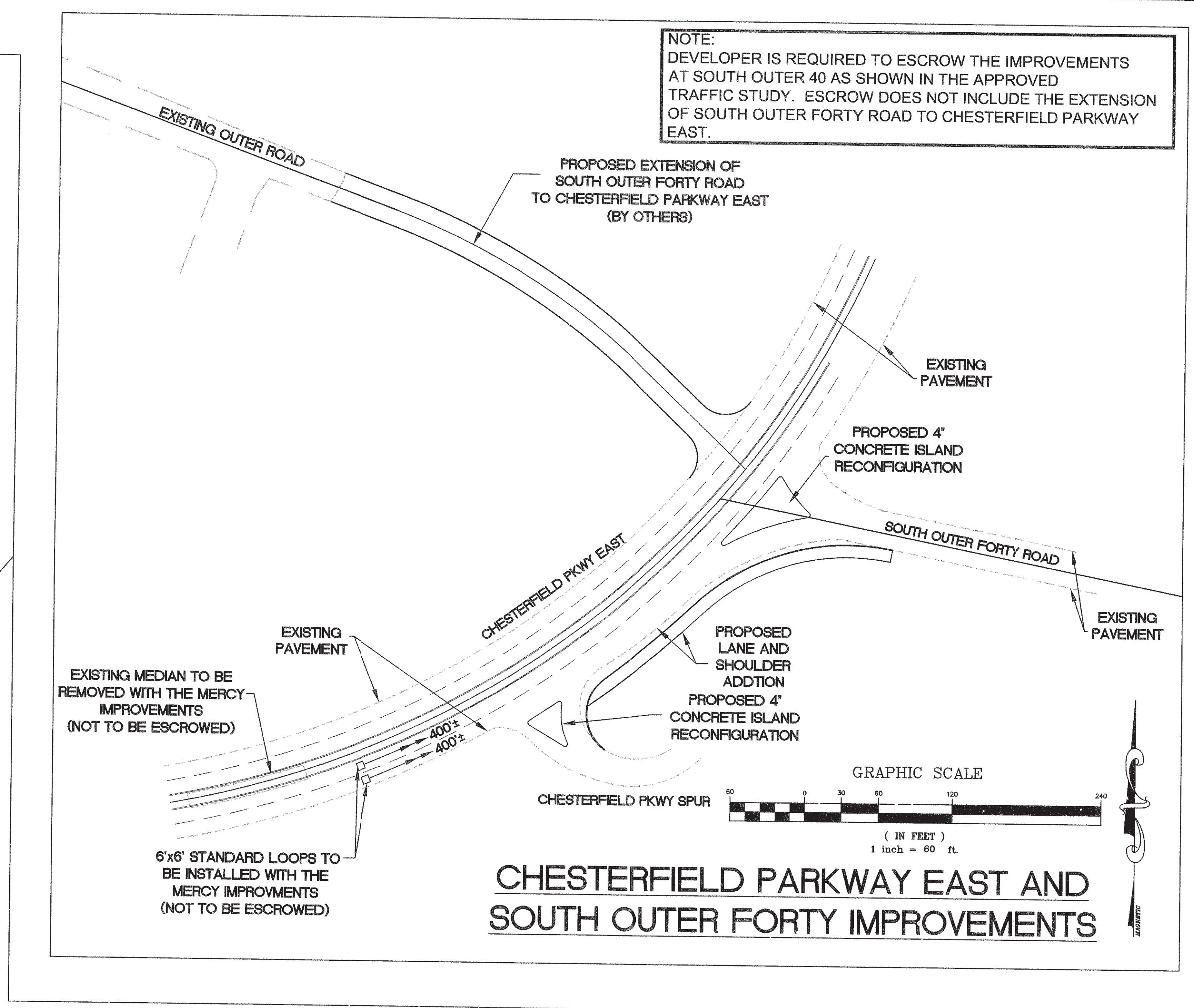
#	DESCRIPTION	DATE
1	CITY SUBMITTAL	9/12/12
2	CITY COMMENTS	10/23/12
3	COUNTY COMMENTS	10/24/12
4	METRO COMMENTS	10/30/12
5	COUNTY COMMENTS	11/01/12
6	CITY COMMENTS	11/07/12
7	24 SETS TO CITY	11/16/12

DATE	JOB NO.
09/10/12	211-4821
	BASE MAP:
	18S & 19S

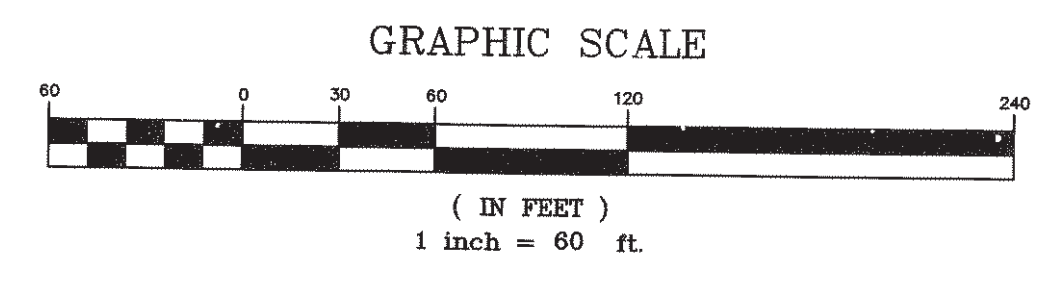
SHEET TITLE:
**SITE DEVELOPMENT
 CONCEPT PLAN
 W/ ULTIMATE ROADS**

SHEET NO.:
C5

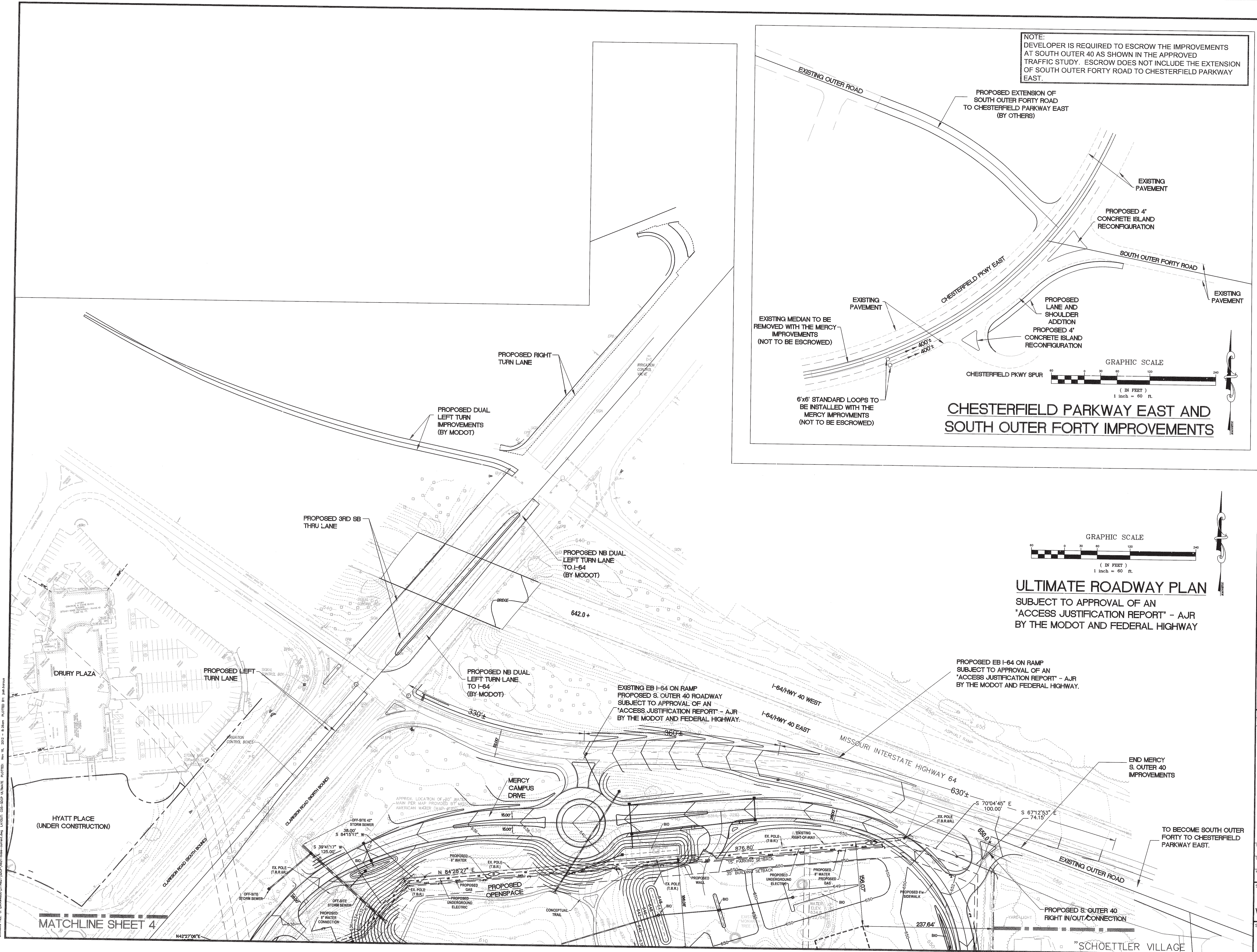
NOTE:
 DEVELOPER IS REQUIRED TO ESCROW THE IMPROVEMENTS
 AT SOUTH OUTER 40 AS SHOWN IN THE APPROVED
 TRAFFIC STUDY. ESCROW DOES NOT INCLUDE THE EXTENSION
 OF SOUTH OUTER FORTY ROAD TO CHESTERFIELD PARKWAY
 EAST.



**CHESTERFIELD PARKWAY EAST AND
 SOUTH OUTER FORTY IMPROVEMENTS**



ULTIMATE ROADWAY PLAN
 SUBJECT TO APPROVAL OF AN
 "ACCESS JUSTIFICATION REPORT" - AJR
 BY THE MODOT AND FEDERAL HIGHWAY



DRAWING FILE: D:\WORK\2012\11481\1200\1200-18S-19S-CONCEPT-PLAN.dwg
 PLOTTED: 11/16/12 10:50:00 AM
 PLOTTER: HP DesignJet 2400
 USER: jacobson

