

TYPE SA - MOD LED

Adjustable Gantry luminaires with asymmetrical light distribution

Luminaires: Luminaires are classified as full cut-off in straight down position, with Type II and Type III distributions available - specify. Luminaire housings are one piece heavy die-cast aluminum construction. Door frames are die-cast, hinged and latched for toolless entry. Lenses are 3/16" clear tempered glass, sealed with one piece silicone gasket. All hardware is stainless steel.

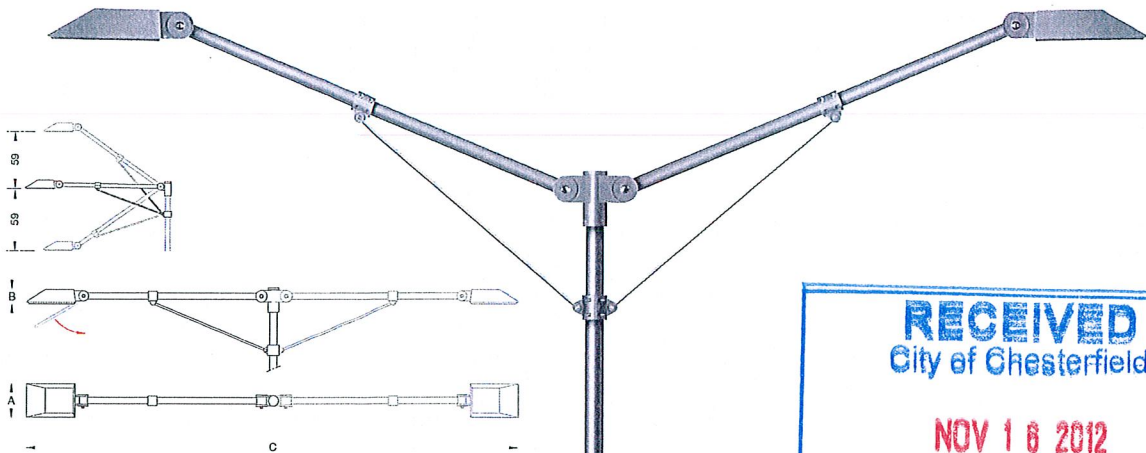
Arm assembly: Aluminum arm slip fits a 3" O.D. pole top. The Gantry System to be used with compatible poles only- consult factory for details. Unique moveable support strut and pole fitter swivel provide an adjustable mounting height of $\pm 60^\circ$ from horizontal. This, combined with a 180° swivel at the fixture head, allows for infinite flexibility in the arm mounting height and the angle of the luminaire.

Electrical: Lampholders are medium base, rated 4KV. Lampholders are porcelain with nickel plated copper screw shell supplied, rated 600V. Ballasts are magnetic HPF, located in the luminaire housing and available in 120V, 208V, 240V or 277V - specify.

Finish: These luminaires are available in five standard BEGA colors: Black (BLK); White (WHT); Bronze (BRZ); Silver (SLV); Eurocoat™ (URO). To specify, add appropriate suffix to catalog number. Custom colors supplied on special order.

U.L. listed, suitable for wet locations. Protection class IP 65.

Type:
BEGA Product:
Project:
Voltage:
Color:
Options:
Modified:

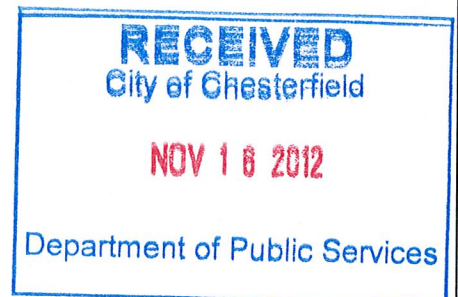


Double outrigger luminaires

Lamp	Lumen	A	B	C
8254 MH 2 150W ED-17 MH*	25000	13	5%	196%

*Coated lamp required for optimum optical performance.
Specify Type II or Type III distribution.

BEGA-US 1000 BEGA Way, Carpinteria, CA 93013 (805) 684-0533 FAX (805) 566-9474 www.bega-us.com
©copyright BEGA-US 2008 Updated 2/08



Adjustable Gantry luminaires with asymmetrical light distribution

Luminaires: Luminaires are classified as full cut-off in straight down position, with Type II and Type III distributions available - specify. Luminaire housings are one piece heavy die-cast aluminum construction. Door frame is die-cast, hinged and latched for toolless entry. Lenses are 1/4" clear tempered glass, sealed with one piece silicone gasket. All hardware is stainless steel.

Arm assembly: Aluminum arm slip fits a 3" O.D. pole top. The Gantry System to be used with compatible poles only- consult factory for details. Unique moveable support strut and pole fitter swivel provide an adjustable mounting height of $\pm 60^\circ$ from horizontal. This, combined with a 180° swivel at the fixture head, allows for infinite flexibility in the arm mounting height and the angle of the luminaire.

Electrical: Lampholders are medium base, rated 4KV. Lampholders are porcelain with nickel plated copper screw shell supplied, rated 600V. Ballasts are magnetic HPF, located in the luminaire housing and available in 120V, 208V, 240V, or 277V - specify.

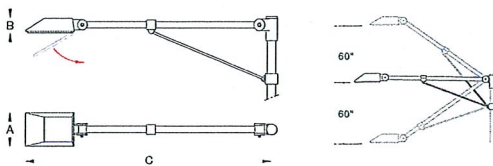
Finish: These luminaires are available in four standard BEGA colors: Black (BLK); White (WHT); Bronze (BRZ); Silver (SLV). To specify, add appropriate suffix to catalog number. Custom colors supplied on special order.

UL listed, suitable for wet locations. Protection class IP 65.

Weight: 67 lbs.

Effective Projection Area (EPA): 2.5 ft²

Type:
BEGA Product:
Project:
Voltage:
Color:
Options:
Modified:



Single outrigger luminaires

Lamp	Lumen	A	B	C
8053MH 1 150W ED-17 MH*	12500	13	5%	98%

*Specify Type II or Type III distribution. Coated lamp required for proper optical performance.

Bollards with single-sided light output

Post construction: Constructed of a one piece die-cast aluminum base. All aluminum is marine grade, copper free alloy.

Optical enclosure: Thick walled aluminum extrusion with die-cast aluminum end cap and lens frame. Clear, tempered safety glass lens with a linear spread pattern. Reflector made from pure anodized aluminum. Internal louvers are made from semi specular anodized aluminum.

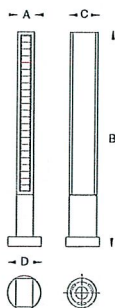
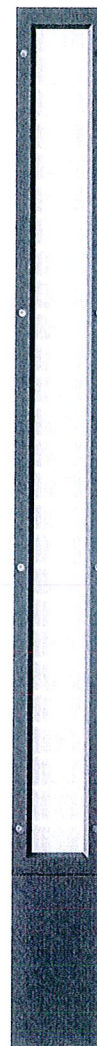
Electrical: Lampholders; Fluorescent miniature bi-pin T5 HO, rated 120W, 600V. Ballasts; integral electronic, universal voltage 120V through 277V. Standard T5 lamping available upon request. Consult factory.

Anchor base: Provided with a heavy cast aluminum base, slotted for precise alignment. Mounts to BEGA #896 A anchorage kit and secured to the post with one stainless steel screw.

Finish: Available in five standard BEGA colors: Black (BLK), White (WHT), Bronze (BRZ), Silver (SLV), Eurocoat (URO). To specify, add appropriate suffix to catalog number. Custom colors supplied on special order.

U.L. listed, suitable for wet locations. Protection class: IP 65.

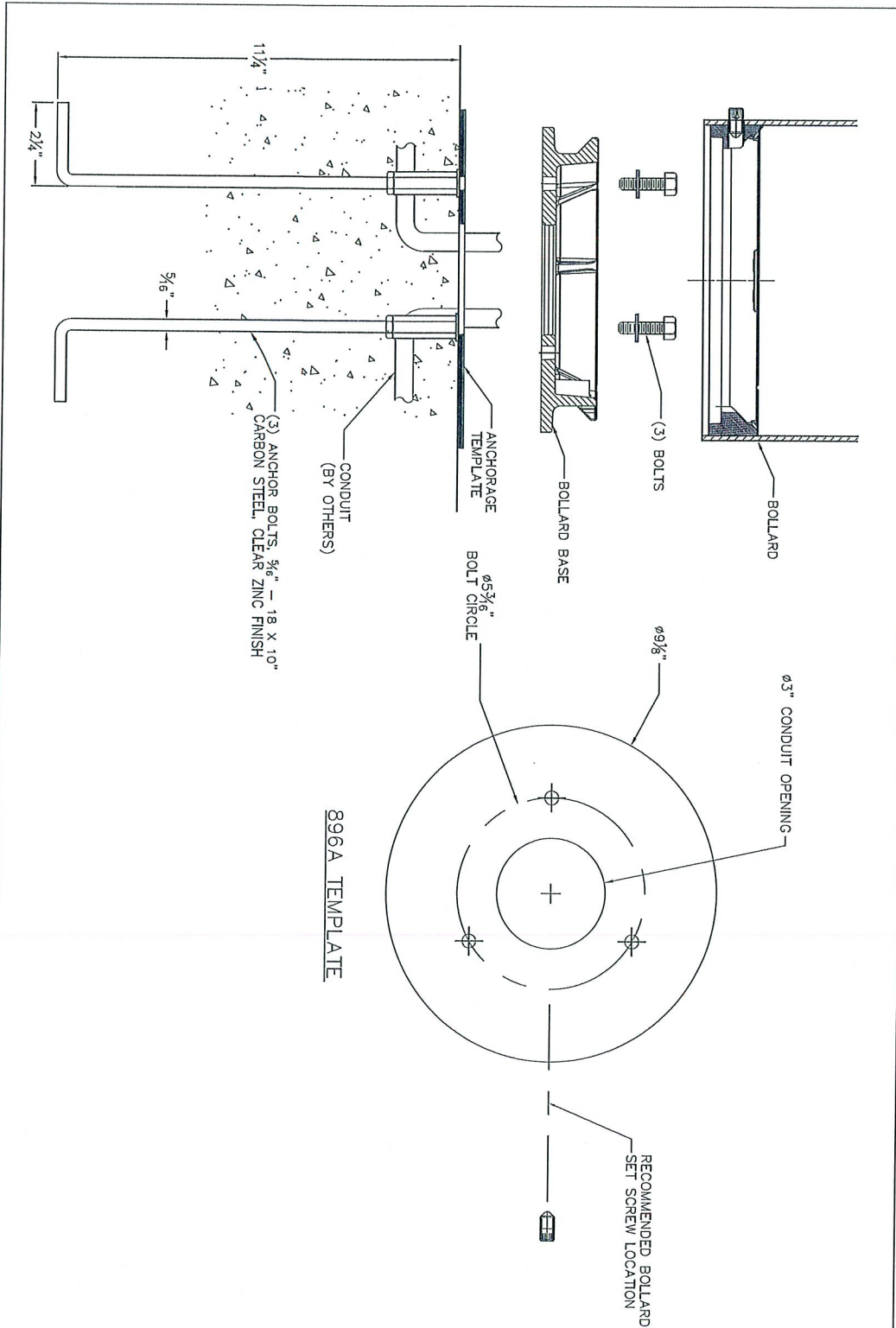
Type:
BEGA Product:
Project:
Voltage:
Color:
Options:
Modified:



Single-sided light output

	Lamp*	Lumen	A	B	C	D	Anchorage
8845 P	1 39W FL T5 HO	3500	3 3/4	47 1/4	6 1/2	7 1/2	896 A

* Equivalent standard T5 lamping available



This print contains confidential information which is the property of BEGA/US. By accepting this information, the borrower agrees that it will not be used for any other purpose other than that which is loaned.

Catalog No.: 896A
 Description: Anchorage Kit
 Drawn by: ES Date: 4/1/2010 File Name:
 SCALE: NONE - DO NOT SCALE DRAWING

BEGA
 1000 Bega Way
 Carpinteria, Ca. 93013
 (805) 684-0533

Bollards for light directed downwards

Post construction: One piece extruded aluminum with a one piece die-cast aluminum top housing and a base internally welded into an assembly. All aluminum used in the construction is marine grade and copper free.

Lamp enclosure: One piece die-cast aluminum top housing removable for relamping, secured by two captive stainless steel screws threaded into stainless steel inserts. Clear tempered safety glass. Reflector made from pure anodized aluminum. Fully gasketed using a molded silicone high temperature gasket. Fully shielded to comply with LEED Zones 1 and higher.

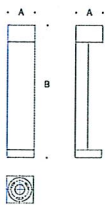
Electrical: 13W LED luminaire, 15.3 total system watts, -25°C start temperature. Integral 120V through 277V electronic LED driver, dimming available with reverse phase control (trailing edge) dimmers. The LED and driver are mounted on a removable plate for easy replacement. Standard LED color temperature is 5000K with a 65 CRI. Available in 3000K (85 CRI) and 4000K (85 CRI); add suffix K3 or K4 respectively to order.

Finish: Available in four standard BEGA colors: Black (BLK); White (WHT); Bronze (BRZ); Silver (SLV). To specify, add appropriate suffix to catalog number. Custom colors supplied on special order.

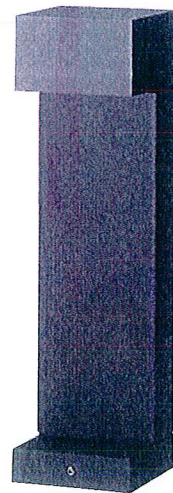
Anchor base: Heavy cast aluminum, slotted for precise alignment. Mounts to BEGA #895A anchorage kit. Bollards are secured to the post with one (1) stainless steel set screw.

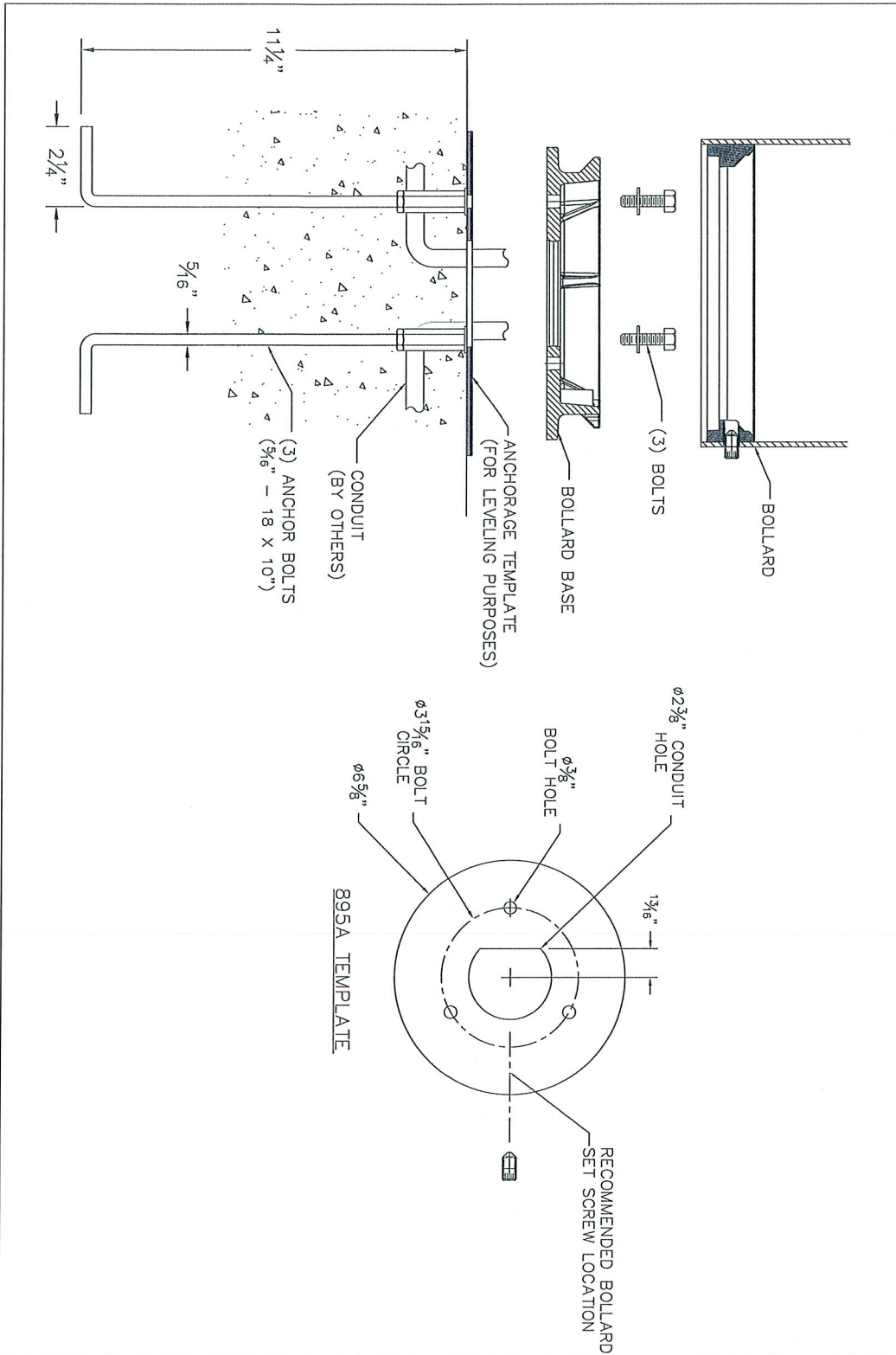
UL listed, suitable for wet locations. Protection class: IP65.

Type:
BEGA Product:
Project:
Voltage:
Color:
Options:
Modified:



Lamp	Lumen	A	B	C	Anchorage
8657 LED 13W LED	1440	6%	21%	6%	895 A





This print contains confidential information which is the property of BEGA/US. By accepting this information, the borrower agrees that it will not be used for any other purpose other than that which is was loaned.

Catalog No: 895A
 Description: Anchorage Kit
 Drawn by: ES Date: 1/26/12 File Name: 895A.dxf
 SCALE: NONE - DO NOT SCALE DRAWING

BEGA
 1000 Bega Way
 Carpinteria, Ca. 93013
 (805) 684-0533

Light building element
with **single-sided** light output

Post construction: The Light Element is constructed of a one piece thick walled aluminum extrusion with a die-cast end cap at the top and internal, heavy wall cast aluminum support pieces at the pole base. All aluminum is marine grade, copper free alloy.

Optical enclosure: Thick walled aluminum extrusion with die-cast aluminum end cap and lens frame. Clear, tempered safety glass lens with a linear spread pattern. Reflector made from pure anodized aluminum. Internal louvers are made from semi specular anodized aluminum.

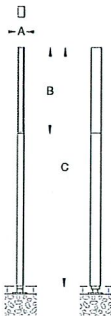
Electrical: Lampholders; Fluorescent miniature bi-pin T5 HO, rated 120W, 600V. Ballasts are electronic, universal voltage, 120V through 277V.

Anchor base: The Lighting Elements are supplied with an 890C anchorage, consisting of a heavy gauge welded assembly of .157" thick galvanized steel. The luminaires slip fit over the base and are secured by eight (8) stainless steel fasteners.

Finish: Available in five standard BEGA colors: Black (BLK), White (WHT), Bronze (BRZ), Silver (SLV), Eurocoat (URO). To specify, add appropriate suffix to catalog number. Custom colors supplied on special order.

U.L. listed, suitable for wet locations. Protection class: IP 65.

Type:
BEGA Product:
Project:
Voltage:
Color:
Options:
Modified:

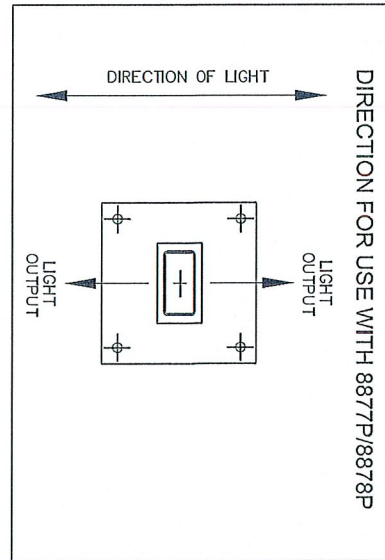
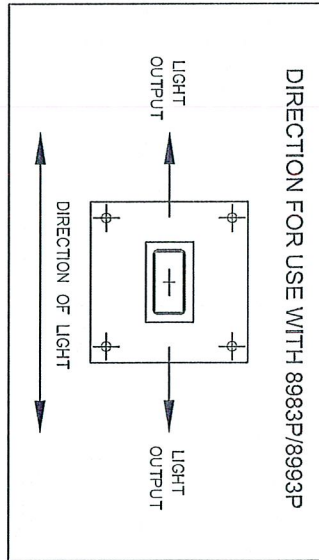
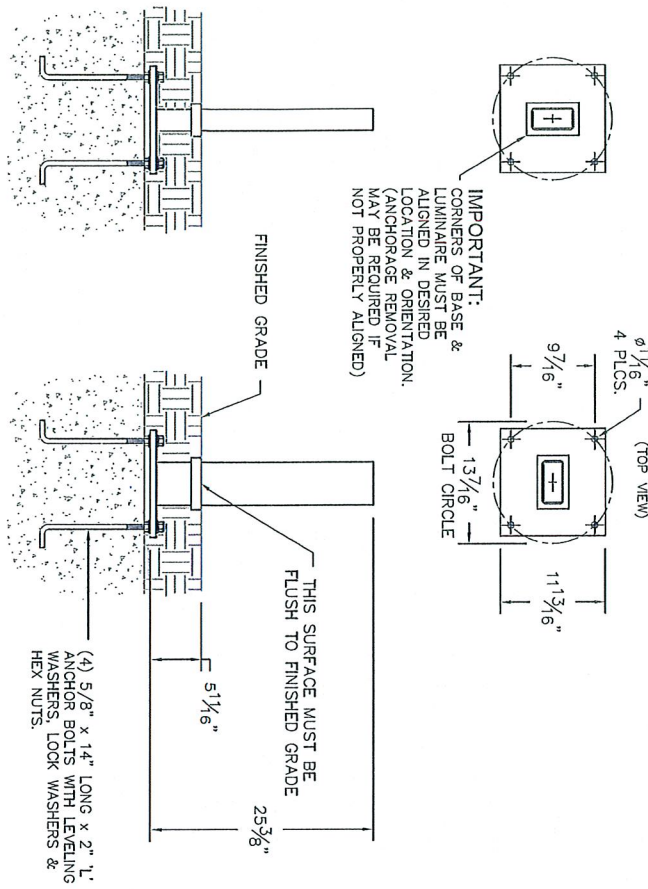


Single-sided

Lamp*	Lumen	A	B	C	Anchorage
8983 P 1 54W FL T5 HO	5000	3 3/4 x 6 1/4	47 1/4	138	890 C

*Equivalent standard T5 lampping available

- NOTES:
1. 890C ANCHOR BASE - SEE 8983P/8993P/8877P/8878P SPECIFICATIONS
 2. ANCHOR BASE MATERIAL: GALVANIZED STEEL.
 3. BASE MUST BE BURIED/INSTALLED TO FINISHED SURFACE AS SHOWN.



This print contains confidential information which is the property of BEGA/US. By accepting this information, the borrower agrees that it will not be used for any other purpose other than that which is was loaned.

Catalog No.: 890C
 Description: ANCHOR BASE DETAIL
 Drawn by: Bob Mc Date: 2/17/11 File Name: 890C
 SCALE: NONE - DO NOT SCALE DRAWING

BEGA
 1000 Bega Way
 Carpinteria, Ca. 93013
 (805) 684-0533

LED pole top luminaires with asymmetrical light distribution

Housing: Die-cast aluminum housing and slip fitter. Slip fits 3" O.D. pole top, secures to pole with integrated slip fitter mechanism and single set screw. Luminaire head slope adjustment located in slip fitter for 0° or 15° head angle. All aluminum used in the construction is marine grade and copper free.

Enclosure: Faceplate is hinged; constructed of die-cast aluminum with toolless access latch for easy maintenance. Tempered clear safety glass with a reflector of pure anodized aluminum. Fully shielded light distribution for no trespass above horizontal. Fully gasketed with a molded silicone gasket.

Electrical: 156 W LED luminaire, 174 total system watts, -30° C start temperature. Integral 120V through 277V electronic LED driver, 0-10V dimming. Integral 10KV surge protection. Standard LED color temperature is 4000K with an 85 CRI. Available in 3000K (85 CRI); add suffix IK3 to order.

Note: LEDs supplied with luminaire. Due to the dynamic nature of LED technology, LED luminaire data on this sheet is subject to change at the discretion of BEGA-US. For the most current technical data, please refer to www.bega-us.com.

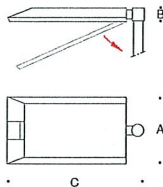
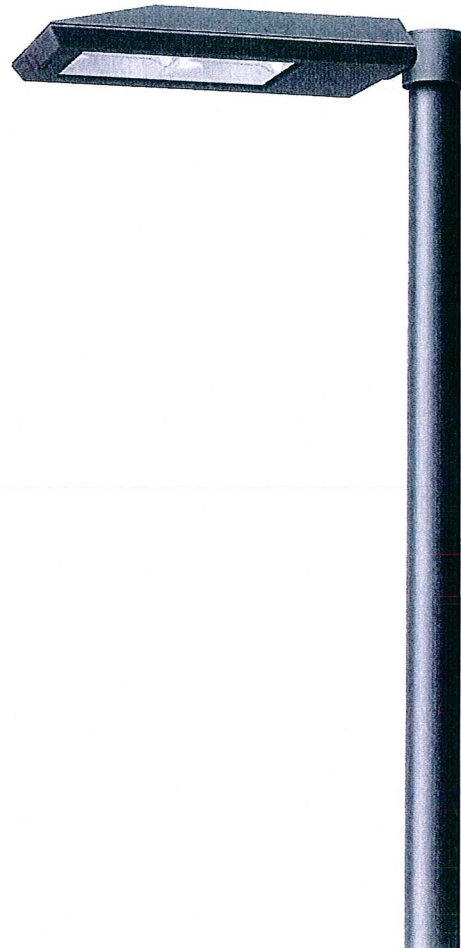
Finish: These luminaires are available in four standard BEGA colors: Black (BLK); White (WHT); Bronze (BRZ); Silver (SLV). To specify, add appropriate suffix to catalog number. Custom colors supplied on special order.

CSA certified to U.S. and Canadian standards. Protection class: IP66.

Weight: 23 lbs.

Effective Projected Area (EPA): .86 ft²

Type:
BEGA Product:
Project:
Voltage:
Color:
Options:
Modified:



Single LED pole-top luminaires

	Lamp	LEED	Lumen	A	B	C
9599 LED	156W LED	LZ-0	16560	13%	3	32%

Recommended for use with 30' to 35' poles.

Recessed wall luminaires with directed light

Housing: Constructed of die-cast and aluminum with integral wiring compartment. Mounting tabs provided.

Enclosure: One piece die-cast aluminum faceplate. Clear tempered glass; .125" thick, machined flush to faceplate surface. Faceplate is secured by two (2) flush, socket head, stainless steel captive screws threaded into stainless steel inserts in the housing casting. Continuous high temperature, molded silicone rubber gasket for weather tight operation.

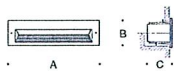
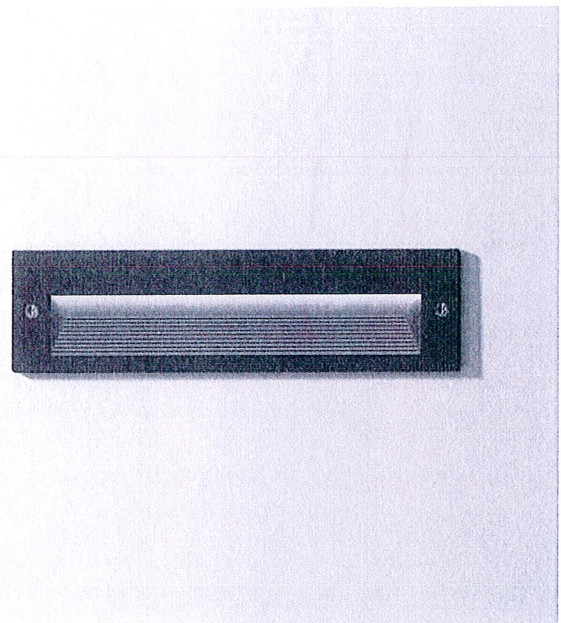
Electrical: 11.2W LED luminaire, 14.5 total system watts, -30°C start temperature. Integral 120V-277V electronic LED driver, 0 -10V dimming available - consult factory. The LED and driver are mounted on a removable plate for easy replacement. Standard LED color temperature is 3000K (available in 4000K; add suffix K4).

Note: Due to the dynamic nature of LED technology, LED luminaire data on this sheet is subject to change at the discretion of BEGA-US. For the most current technical data, please refer to www.bega-us.com.

Finish: Available in four standard BEGA colors: Black (BLK); White (WHT); Bronze (BRZ); Silver (SLV). To specify, add appropriate suffix to catalog number. Custom colors supplied on special order.

UL listed, suitable for wet locations and for installation within 3 feet of ground. IC rated. Protection class: IP65.

Type:
BEGA Product:
Project:
Voltage:
Color:
Options:
Modified:



	Lamp	Lumen	A	B	C
2384 LED	LED	11.2W LED	900	12½	2¼ 2½

Surface-mounted ceiling downlights for H.I.D. lamps

Housing: Two piece die-cast aluminum provided with means for direct attachment to the ceiling over a 3½" or 4" octagonal wiring box. All aluminum used in the construction is marine grade and copper free.

Enclosure: Tempered clear glass, retained by a one piece, die-cast aluminum step baffle frame. Frame is secured by one stainless steel captive screw threaded into a stainless steel insert. Internal reflector made from pure, anodized aluminum. Fully gasketed for weather tight operation using molded silicone rubber "U-channel" gasket.

Electrical: H.I.D. lampholders are GU6.5 base, bi-pin porcelain with nickel plated copper contacts, pulse rated 5KV. Ballasts are electronic, universal voltage 120V through 277V, located in the luminaire housing.

Finish: Available in four standard BEGA colors: Black (BLK); White (WHT); Bronze (BRZ); Silver (SLV). To specify, add appropriate suffix to catalog number. Custom colors supplied on special order.

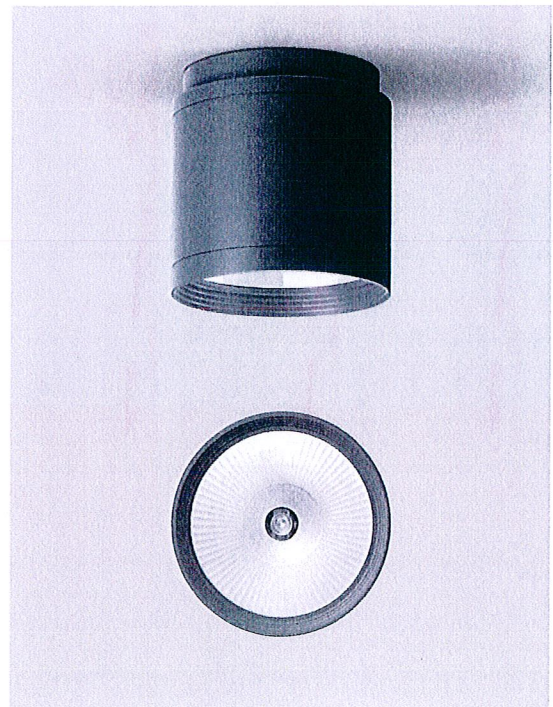
UL listed, suitable for wet locations. Protection class IP65.

Type:
BEGA Product:
Project:
Voltage:
Color:
Options:
Modified:



			Lumen	β	A	B
5618 MH	1	39W T4 GU6.5 MH	3400	76°	6	7 1/8

β = Beam angle



Drive-over in-grade floodlights
with low surface temperature lens and adjustable light distribution

Enclosures: Outer housing of high tensile strength stainless steel; Inner housing is factory sealed and fabricated of heavy gauge stainless steel.

Trim Ring: Heavy gauge, machined stainless steel secured to inner housing by six (6) stainless steel hex head fasteners. Trim is sealed in place using molded, one piece high temperature silicone gasket. Glass is clear tempered, 1/2" thick, machined flush to trim ring.

Electrical: Porcelain bi-pin lamp with nickel plated contacts for G8.5 base lamps. Provided with a magnetic HPF ballast available in 120V or 277V - specify. Inner housing pre-wired with nine (9) feet of 18/3 waterproof cable with "water stopper" feature, cable clamp and waterproof cable gland entry into housing. A separate waterproof wiring box for power supply must be provided (by contractor).

Adjustable optical assembly: Consists of a pressed glass, faceted reflector with dichroic coating to conduct infrared heat rearward, while reflecting visible light forward. Assembly includes temperature reducing infrared lens which must be kept in place when adding lens options. Color filters, spread lenses and a concentric ring louver may be added as available options. Precise aiming of the lamp is achieved by adjusting reflector assembly 180° horizontal and up to 30° vertical in 5° increments and locking in place with an integral set screw.

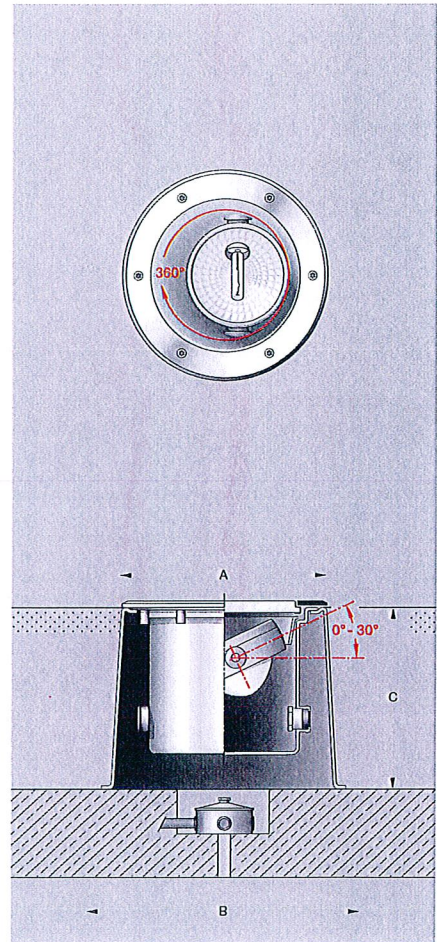
Finish: Machined #4 brushed stainless steel. Custom colors not available.

UL listed, suitable for wet locations and drive-over. Protection class IP68.

Temperature caution: The column "T" in this chart indicates the temperature in degrees Celsius which is reached on the center of the glass surface during operation. Surface temperatures are for exterior applications. For interior applications add 10° C to temperatures shown.

Note: These luminaires are designed to bear pressure loads up to 4400lbs. from vehicles with pneumatic tires. The luminaires must not be used for traffic lanes where they are subject to horizontal pressure from vehicles braking, accelerating and changing direction.

Type:
BEGA Product:
Project:
Voltage:
Color:
Options:
Modified:



Adjustable floodlights

Lamp	β	Lumen	T	A	B	C								
8751 MH	1	70W T4G8.5 MH	14°	6400	74°	13	16	10	670	321	322	323	300	309

Louver
 Color effect filters
 Diffuser lenses
 Wide beam
 Flat beam
 β = Beam angle

Drive-over in-grade linear floodlights with LEDs - Asymmetrical

Enclosure: Outer housing: Constructed of high tensile strength, copper free die-cast aluminum alloy.

Inner housing: Constructed of extruded stainless steel. Trim/Faceplate is heavy gauge, machined stainless steel secured to the inner housing by stainless steel threaded welded studs. Maintenance requires removal of inner housing/trim/faceplate assembly from outer housing by means of two flush, socket head stainless steel screws. 1/4" thick tempered matte safety glass machined flush to faceplate. One piece molded U-channel, high temperature silicone gasket. Reflector is aluminum with high gloss coating.

Electrical: 44 W LED luminaire, -35° C start temperature. Integral 120V through 277 V electronic LED driver, dimming not available. Standard LED color temperature is 5000K. Available in 4000K; add suffix K4 to order. Available in 3000K; consult factory. Inner housing pre-wired with nine (9) feet of 18/3 water stopper cable, cable clamp, and waterproof cable gland entry into housing. A separate weatherproof single gang wiring box for power supply must be provided (by contractor).

Note: Due to the dynamic nature of LED technology, LED luminaire data on this sheet is subject to change at the discretion of BEGA-US. For the most current technical data, please refer to www.bega-us.com.

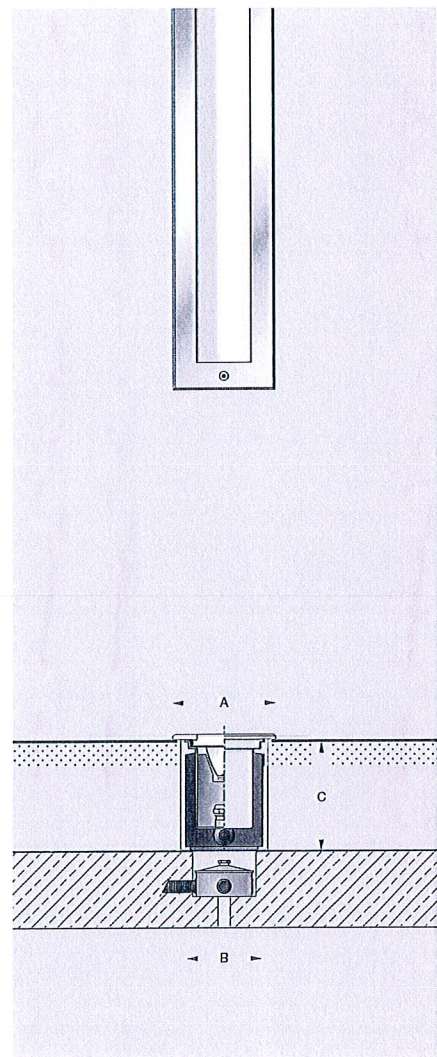
Finish: #4 brushed stainless steel. Custom colors are not available.

UL Listed, suitable for wet locations and vehicle drive over. Protection class: IP67.

Note: A foundation and proper drainage must be supplied by the contractor. These luminaires are designed to bear pressure loads up to 2,200lbs. from vehicles with pneumatic tires. The luminaires must not be used for traffic lanes where they are subject to horizontal pressure from vehicles braking, accelerating and changing direction.

Weight: 29.8 lbs.

Type:
BEGA Product:
Project:
Voltage:
Color:
Options:
Modified:



Floodlights - Asymmetrical

Lamp	Lumen	A	B	C
8849 LED 44 W LED	4000	39 3/8 x 3 3/8	3 1/2	5

Drive-over in-grade floodlights
for linear fluorescent lamps

Enclosure: Outer housing: Constructed of high tensile strength, copper free die-cast aluminum alloy.

Inner housing: One piece copper free die-cast aluminum housing with welded end caps. Trim/Faceplate is heavy gauge, machined stainless steel secured to the inner housing by stainless steel threaded welded studs. Relamping requires removal of inner housing/trim/faceplate assembly from outer housing by means of two flush, socket head stainless steel screws. 1/2" thick tempered glass machined flush to faceplate. Reflector of pure anodized aluminum. One piece molded U-channel, high temperature silicone gasket.

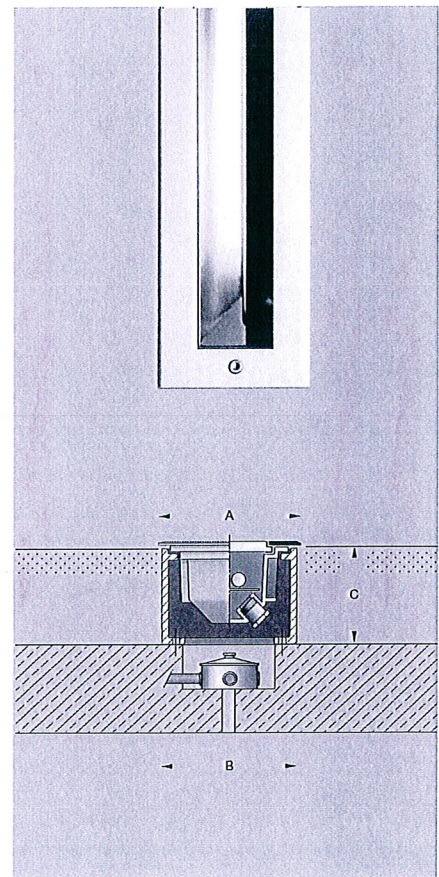
Electrical: Lampholders: Fluorescent T5 HO, rated 660W, 600V. Ballasts are electronic, universal voltage 120V through 277V. Inner housing pre-wired with nine (9) feet of 18/3 waterproof cable, cable clamp, and waterproof cable gland entry into housing. A separate weatherproof single gang wiring box for power supply must be provided (by contractor). Standard T5 lamping available upon request.

Finish: Machined #4 stainless steel. Custom colors are not available.

UL Listed, suitable for wet locations and vehicle drive over. Protection class: IP67.

Note: A foundation and proper drainage must be supplied by the contractor. These luminaires are designed to bear pressure loads up to 11,000lbs. from vehicles with pneumatic tires. The luminaires must not be used for traffic lanes where they are subject to horizontal pressure from vehicles braking, accelerating and changing direction.

Type:
BEGA Product:
Project:
Voltage:
Color:
Options:
Modified:



Asymmetrical floodlights · clear safety glass

Lamp	β	Lumen	T	A	B	C
8643P*	1 54W FL T5 HO	62x 94°	5000	45°	4 3/4 x 48 3/4	4 1/4 x 48 1/4

*Standard T5 lamping available upon request

β = Beam angle

LED pole top luminaires with asymmetrical light distribution

Housing: Die-cast aluminum housing and slip fitter. Slip fits 3" O.D. pole top, secures to pole with integrated slip fitter mechanism and single set screw. Luminaire head slope adjustment located in slip fitter for 0° or 15° head angle. All aluminum used in the construction is marine grade and copper free.

Enclosure: Faceplate is hinged; constructed of die-cast aluminum with toolless access latch for easy maintenance. Tempered clear safety glass with a reflector of pure anodized aluminum. Fully shielded light distribution for no trespass above horizontal. Fully gasketed with a molded silicone gasket.

Electrical: 156 W LED luminaire, 174 total system watts, -30° C start temperature. Integral 120 V through 277 V electronic LED driver, 0-10 V dimming. Integral 10KV surge protection. Standard LED color temperature is 4000K with an 85 CRI. Available in 3000K (85 CRI); add suffix K3 to order.

Note: LEDs supplied with luminaire. Due to the dynamic nature of LED technology, LED luminaire data on this sheet is subject to change at the discretion of BEGA-US. For the most current technical data, please refer to www.bega-us.com.

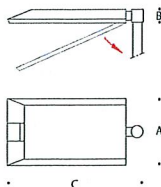
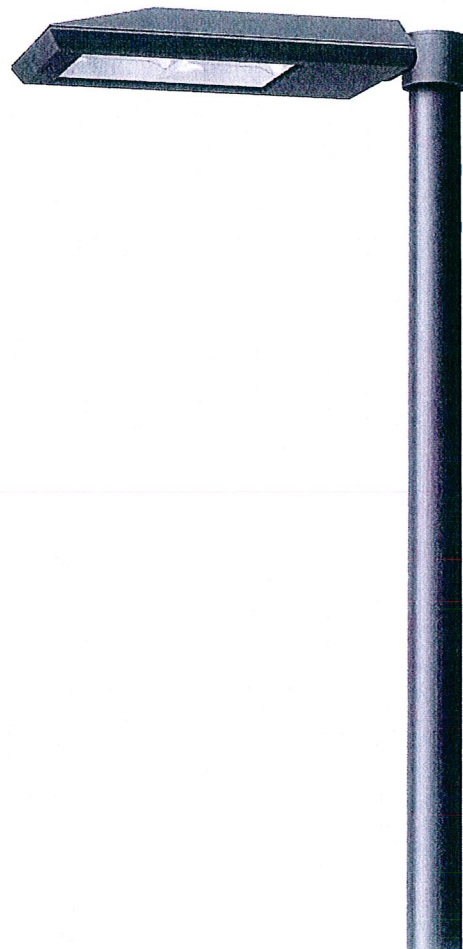
Finish: These luminaires are available in four standard BEGA colors: Black (BLK); White (WHT); Bronze (BRZ); Silver (SLV). To specify, add appropriate suffix to catalog number. Custom colors supplied on special order.

CSA certified to U.S. and Canadian standards. Protection class: IP66.

Weight: 23 lbs.

Effective Projected Area (EPA): .86 ft²

Type:
BEGA Product:
Project:
Voltage:
Color:
Options:
Modified:



Single LED pole-top luminaires

Lamp	LEED	Lumen	A	B	C
9599 LED 156 W LED	LZ-0	16560	13 3/4	3	32 3/4

Recommended for use with 30' to 35' poles.

Revisions: A - 09/27/12

**RGA HEADQUARTERS
LIGHTING FIXTURE SCHEDULE**

TYPE	MANUFACTURER CATALOG NUMBER	LUMINAIRE DESCRIPTION	LAMP CODE	LAMPS/ UNIT	MAXIMUM WATTS/ UNIT	VOLTS	NOTES	REV.
SA	Bega 8254MH/14.5GP/ XXX(Finish)/3000K/ MOD LED	Twin head LED "gantry" parking lot pole	Integral	N/A	400	As Req'd		A
SA-1	Bega 8053MH/14.5GP/ XXX(Finish)/3000K/ MOD LED	Single head LED "gantry" parking lot pole	Integral	N/A	200	As Req'd		A
SB	Bega 8845P/896A/XXX (Finish)	Linear fluorescent bollard	F39T5/830/ HO/ALTO	1	15/FT	As Req'd		
SB-1	Bega 8657LED/895A	LED cut-off bollard	Integral	1	12	As Req'd		A
SC	Not Used							A
SD	Bega 8983P/890C/XXX (Finish)	Linear fluorescent light column	F54T5/830/ HO/ALTO	1	15/FT	As Req'd		

Revisions: A - 09/27/12

**RGA HEADQUARTERS
LIGHTING FIXTURE SCHEDULE**

TYPE	MANUFACTURER CATALOG NUMBER	LUMINAIRE DESCRIPTION	LAMP CODE	LAMPS/ UNIT	MAXIMUM WATTS/ UNIT	VOLTS	NOTES	REV.
SE	Bega 9599LED/2908SF/ XXX (Finish)/K4	Single head LED street light	N/A	N/A	156	As Req'd		
SF	Bega 2384LED	LED wall recessed step light	Integral	1	12	As Req'd		A
SG	Bega 5618MH	Canopy mounted metal halide cylinder downlight	MC39TF/U/ GU6.5/830	1	45	As Req'd		
SH	Not Used							A
SJ	Bega 8751MH/300	Flush to grade metal halide uplight illuminating retaining wall.	Philips CDM35/TC/830	1	95	As Req'd		A
SK	Bega 8849LED	Flush to grade LED asymmetric uplight.	Integral	N/A	40	As Req'd		A
SL	Bega 8643P	Flush to grade linear fluorescent asymmetric uplight.	Integral	N/A	15/FT	As Req'd		A