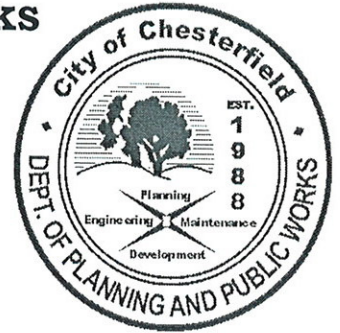


# III. B.

## Department of Planning & Public Works

**To:** Michael Herring, City Administrator  
*moZ*  
**From:** Mike Geisel, Director of Planning & Zoning  
**Date:** 10/31/2008  
**Re:** Phase two construction, CVAC



Pursuant to direction provided by City Council and yourself, Public Works Project Management Staff continues to facilitate and expedite the progress of phase two park improvement projects. We continue to work with professional engineering and architectural firms to “package” specific improvements into design and construction projects in optimal sequence.

As discussed and unanimously recommended by the Planning and Public Works Committee at their October 23, 2008 meeting and subsequently scheduled for approval by the full City Council at the November 3, 2008 meeting, the City has previously approved a change order with Frederich Construction for work at the Chesterfield Valley Athletic complex, bringing the total authorization to the amount of \$5,417,581.

As discussed with the Planning and Public Works Committee, we were actively seeking pricing for additional change orders for improvements related to the new parking lot and to facilitate water, sewer, and irrigation improvements for the future concession building for the “F” athletic fields. Specifically, I now recommend approval of an additional change order for the following work:

- a) *Irrigation system in new parking lot.* **\$74,568**
- b) *New 4” irrigation line between existing irrigation and new deep well to provide interconnectivity and redundant supply; and New 6” irrigation line from new deep well to provide for future irrigation of “F” athletic Fields.* **\$26,160**
- c) *Well house upgrades for irrigation controllers (parking lot and future “F” athletic fields).* **\$39,810**
- d) *Electrical pole bases and conduits for lighting structures in parking lot.* **\$16,650**
- e) *Extend water and sewer lines north of the CVAC Parks Maintenance Facility and parking lot, extended to site of future concessions structure at “F” Athletic Fields.* **\$161,305**
- f) *Contingency for the cumulative change orders.* **\$31,507**

**Total change order      \$350,000**

Mike Herring  
CVAC Phase two, Change order recommendation  
October 31, 2008  
Page two

***Accordingly, I recommend that City Council approve a second change order with Frederich Construction in an amount not to exceed \$350,000, increasing the total authorized contract amount to \$5,767,581 for the original contract work associated with Construction of the Parks Maintenance facility, as well as the changes described above for the proposed parking lot and infrastructure extensions to serve the "F" athletic fields. This work would be funded entirely from Proposition P funds, which would of course, be replenished when financing for Phase Two work is ultimately received.***

For your convenience and reference, the prior change order was approved in the amount of \$1,701,231. Accordingly, the cumulative value of change orders recommended is \$2,051,231. I look forward to discussing this work with you in greater detail. Please advise if you need additional information.

Enclosures

Cc Darren Dunkle, Director of Parks & Recreation  
Brian McGownd, Public Works Director \ City Engineer  
Susan Mueller, Principal Engineer  
Terry Scherer, Project Manager

# FCI

## Frederich Construction, Inc.

206 Sherry Road

Labadie, MO 63055

636-239-0934 (phone)

636-239-0635 (fax)

E-Mail [kurtfrederich@frederichconstruction.com](mailto:kurtfrederich@frederichconstruction.com)

Mr. Terry Scherer  
City of Chesterfield  
690 Chesterfield Pkwy. West  
Chesterfield, MO 63017-0760  
636-579-6240 phone  
[tscherer@chesterfield.mo.us](mailto:tscherer@chesterfield.mo.us)

October 28, 2008

RE: CVAC - 7

**RFP # 46      *Irrigation Sprinkler System***

Irrigation Sprinkler Plan per plan II -- 2 CVAC-7 pkg

(Does not include work inside well house)

Includes OH & P

\$ 74,568.00

Respectfully Submitted:

Kurt W. Frederich, President  
Frederich Construction Inc.

# FCI

## Frederich Construction, Inc.

206 Sherry Road  
Labadie, MO 63055  
636-239-0934 (phone)  
636-239-0635 (fax)  
E-Mail [kurtfrederich@frederichconstruction.com](mailto:kurtfrederich@frederichconstruction.com)

Mr. Terry Scherer  
City of Chesterfield  
690 Chesterfield Pkwy. West  
Chesterfield, MO 63017-0760  
636-579-6240 phone  
tscherer@chesterfield.mo.us

October 28, 2008

RE: CVAC - 7

RFP # 47 Main Lines for Irrigation

1ea 4" gate valve NRS MJ  
1ea 6" gate valve NRS MJ  
2 ea Cast Iron Valve boxes

750 LF of 6" SDR21 w/ tracer wire

700 LF of 4" SDR21 w/ tracer wire

700 LF electrical conduit buried along 6" main

150 LF of 12" for sleeves

1 ea winterization fitting FPT

Includes OH & P

\$ 26,160.00

Respectfully Submitted:

Kurt W. Frederich, President  
Frederich Construction Inc.

# FCI

## Frederich Construction, Inc.

206 Sherry Road  
Labadie, MO 63055  
636-239-0934 (phone)  
636-239-0635 (fax)  
E-Mail [kurtfrederich@frederichconstruction.com](mailto:kurtfrederich@frederichconstruction.com)

Mr. Terry Scherer  
City of Chesterfield  
690 Chesterfield Pkwy. West  
Chesterfield, MO 63017-0760  
636-579-6240 phone  
tscherer@chesterfield.mo.us

October 28, 2008

RE: CVAC - 7

### RFP # 48 Well House Equipment & Controls for Irrigation

Install Well House Equipment as per attached from Professional Irrigation System LLC

Includes OH & P \$ 53,730.00

44,775	Cost
9,600	Credit
<hr/>	
33,175	Net Cost.
x 1.2	OH & P
<hr/>	
39,810	Price to owner

Respectfully Submitted:

Kurt W. Frederich, President  
Frederich Construction Inc.

PROFESSIONAL IRRIGATION SYSTEMS, LLC  
 111 Avalon Industrial Parkway  
 Wentzville, MO 63385  
 (636) 332-2494

# Estimate

Date	Estimate #
10/27/2008	12299

Name / Address
Frederich Construction, Inc. 206 Sherry Labadie, MO 63055

Terms
Net 30

Description	Qty	Unit Price	Total
CVAC 5 Change Options Well House plumbing per Base Contract to include the following: • 4" MJ PVC Check Valve • 4" PVC MJ Shut Off Ball Valve • 2" Manual Blow off valve to atmosphere • 2 - 119 gallon Wessel Bladder tank with isolation valves 2" PVC. • Winterization fitting 1" FPT • Extension of 4" SDR21 line under footing and connected to irrigation system. • All electric and control panels to be provided by others. Total Labor and Materials for Base Bid Well House	0	9,600.00	0.00
Change from base contract to the following described scope for well house and pumping station to include the following: • UL Listed Industrial Control Panel assembly • NEMA 4, 48"l x 36"w x 16"d, wall mount panel (allow an additional 18" clearance on width dimension for fan servicing and surge arrester) • 100 amp disconnect • Forced air cooling • 40 HP ABB ACH 550 series Variable Frequency Drive for pressure regulation control using the drive processor for control. • Drive internal input line reactor • Alarm conditions with safety shut down: o Low discharge pressure alarm (alarm message "external fault 2") o High discharge pressure alarm (alarm message "external fault 1")			
Thank you for your business.		<b>Total</b>	

We hereby propose to furnish labor and material for the above specifications. All work to be completed in a workmanlike manner according to standard practices. Any alterations or deviation from the above specifications involving additional costs will be executed only upon written orders and will be an additional charge over and above this estimate. Our workers are fully covered by Workman's Comp Insurance. Any delinquent bills will be subject to a 2% monthly penalty. Failure of this contractor to pay those persons supplying material or services to complete this contract can result in the filing of a mechanic's lien on the property which is the subject of this contract pursuant to chapter 429 RSMO. To avoid this result you may ask for lien waivers from all persons supplying material or services for the work described in the above estimate.

Proposal Accepted By: \_\_\_\_\_ Page 1  
 Date: \_\_\_\_\_

PROFESSIONAL IRRIGATION SYSTEMS, LLC  
 111 Avalon Industrial Parkway  
 Wentzville, MO 63385  
 (636) 332-2494

# Estimate

Date	Estimate #
10/27/2008	12299

Name / Address
Frederich Construction, Inc. 206 Sherry Labadie, MO 63055

Terms
Net 30

Description	Qty	Unit Price	Total
<ul style="list-style-type: none"> <li>o VFD fault shutdown</li> <li>o Individual motor overload alarm</li> <li>• Stainless steel pressure transducer</li> <li>• Pump on/off selector switch</li> <li>• Low discharge pressure over ride/normal selector switch</li> <li>• Lightning &amp; surge protection :</li> <li>• 6" pump check valve with all stainless steel internal, with groove coupling discharge assembly</li> <li>• 1ca-8" air collection chamber with 1" deep well air release</li> <li>• 3" flow spool with Data Industrial 220B flow sensor with Data Industrial Model 1500 to record Flow</li> <li>• 6" station discharge isolation valve - Connection to distribution system by others - Length of spool and discharge piping to be determined</li> <li>• 2" pressure relief valve with isolation butterfly valve: atmospheric discharge</li> <li>• 4" liquid filled gauge</li> <li>• Hose bib and bladder tank connections on pump discharge manifold</li> <li>• 132 gallon Wessel Bladder tank</li> <li>• Owners Manual</li> <li>• 1 year warranty from date of Delivery</li> <li>• Electric service (460 Volt, 3 Phase, 60 Hertz) to control panel to be provided by others.</li> <li>** 50% Deposit required for this option due to customization of equipment required.</li> </ul>			
Thank you for your business.		<b>Total</b>	

We hereby propose to furnish labor and material for the above specifications. All work to be completed in a workmanlike manner according to standard practices. Any alterations or deviation from the above specifications involving additional costs will be executed only upon written orders and will be an additional charge over and above this estimate. Our workers are fully covered by Workman's Comp Insurance. Any delinquent bills will be subject to a 2% monthly penalty. Failure of this contractor to pay those persons supplying material or services to complete this contract can result in the filing of a mechanic's lien on the property which is the subject of this contract pursuant to chapter 429 RSMO. To avoid this result you may ask for lien waivers from all persons supplying material or services for the work described in the above estimate.

Proposal Accepted By: \_\_\_\_\_ Page 2  
 Date: \_\_\_\_\_

PROFESSIONAL IRRIGATION SYSTEMS, LLC  
 111 Avalon Industrial Parkway  
 Wentzville, MO 63385  
 (636) 332-2494

# Estimate

Date	Estimate #
10/27/2008	12299

Name / Address
Frederich Construction, Inc. 206 Sherry Labadie, MO 63055

Description	Qty	Unit Price	Terms
			Net 30
			Total
Total Labor and Materials for changed scope in Well House	0	44,775.00	0.00
Change from base specifications to the following described scope future expansion of irrigation system to include the following:			
• Continuation of 6" ductile iron distribution line installed under footing with trace wire.			
• 1 - 4" Gate Valve NRS MJ			
• 1 - 6" Gate Valve NRS MJ			
• 2 - Cast Iron Valve Boxes			
• 750 linear foot of 6" SDR21 with tracer wire installed to north future ball field area capped off.			
• 700 linear foot of 4" SDR21 with tracer wire installed directly west to limits of work and capped off in ground for City to continue.			
• 150 linear foot of 12" SDR21 installed as sleeving for pavement crossings of 6" main line.			
• 750 linear foot of 2" electric conduit buried along side of 6" main for future expansion of control system.			
• 1" Winterization Fitting FPT			
Total Labor and Materials for changed scope on irrigation plans.	0	21,800.00	0.00
Thank you for your business.		<b>Total</b>	\$0.00

We hereby propose to furnish labor and material for the above specifications. All work to be completed in a workmanlike manner according to standard practices. Any alterations or deviation from the above specifications involving additional costs will be executed only upon written orders and will be an additional charge over and above this estimate. Our workers are fully covered by Workman's Comp Insurance. Any delinquent bills will be subject to a 2% monthly penalty. Failure of this contractor to pay those persons supplying material or services to complete this contract can result in the filing of a mechanic's lien on the property which is the subject of this contract pursuant to chapter 429 RSMO. To avoid this result you may ask for lien waivers from all persons supplying material or services for the work described in the above estimate.

Proposal Accepted By: \_\_\_\_\_ Date: \_\_\_\_\_ Page 3



# FCI

## Frederich Construction, Inc.

206 Sherry Road  
Labadie, MO 63055  
636-239-0934 (phone)  
636-239-0635 (fax)  
E-Mail [kurtfrederich@frederichconstruction.com](mailto:kurtfrederich@frederichconstruction.com)

Mr. Terry Scherer  
City of Chesterfield  
690 Chesterfield Pkwy. West  
Chesterfield, MO 63017-0760  
636-579-6240 phone  
[tscherer@chesterfield.mo.us](mailto:tscherer@chesterfield.mo.us)

October 28, 2008

RE: CVAC - 7

### RFP # 59 Pkg 7 lighting rough in and Light Tower Bases

2 ea 4' Dia. X 8' ----- \$ 1,800.00 each	\$ 3,600.00
4 - Pull boxes @ \$ 400.00 ea	\$ 1,200.00
1,200 LF of 2 in bored Conduit for Lighting @ 7.50 PLF	\$ 9,000.00
OH & P	\$ 2,760.00
Total	\$ 16,560.00

Respectfully Submitted:

Kurt W. Frederich, President  
Frederich Construction Inc.

# FCI

## Frederich Construction, Inc.

206 Sherry Road  
Labadie, MO 63055  
636-239-0934 (phone)  
636-239-0635 (fax)  
E-Mail [kurtfrederich@frederichconstruction.com](mailto:kurtfrederich@frederichconstruction.com)

Mr. Terry Scherer  
City of Chesterfield  
690 Chesterfield Pkwy. West  
Chesterfield, MO 63017-0760  
636-579-6240 phone  
tscherer@chesterfield.mo.us

October 28, 2008

RE: CVAC - 7

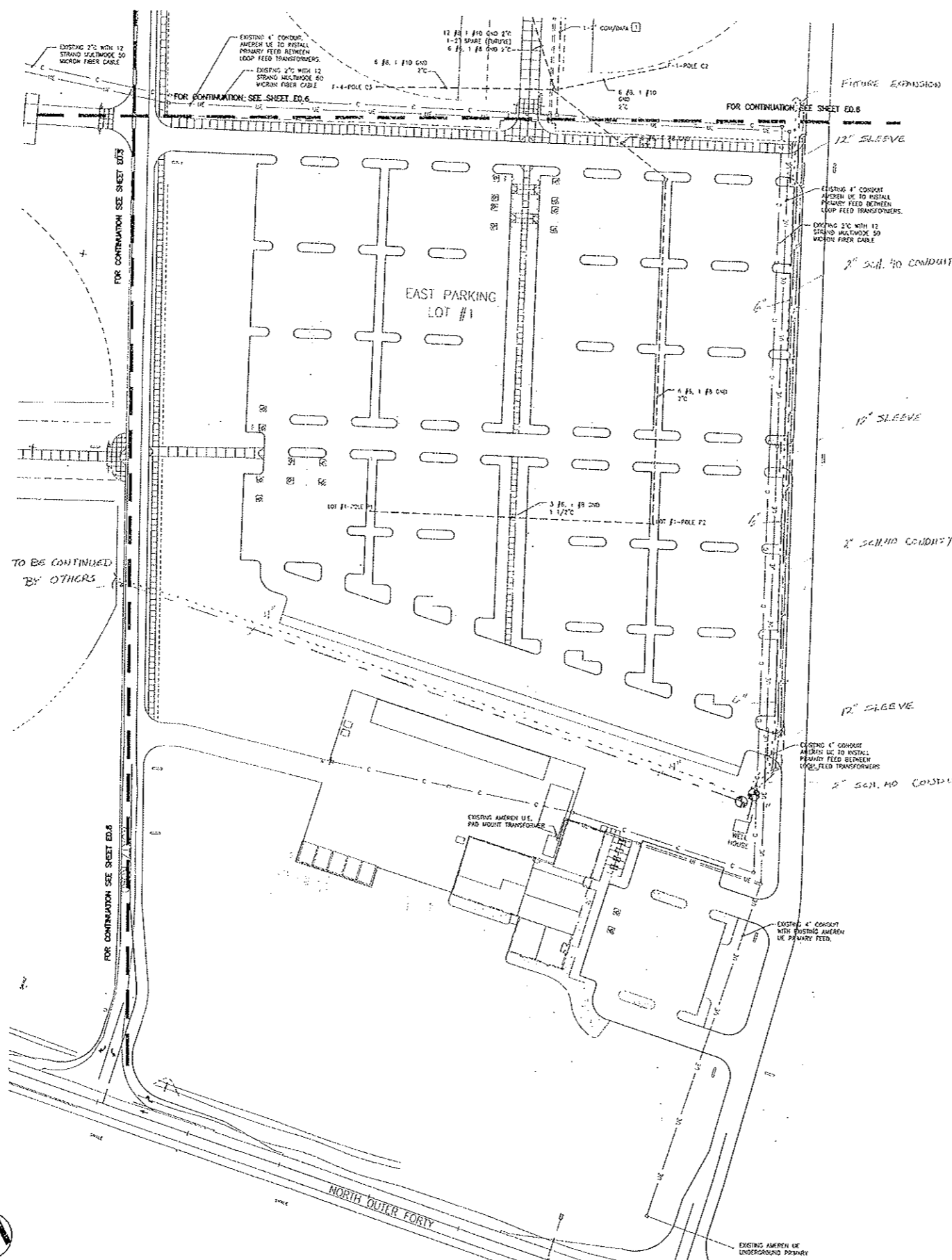
### RFP # 60 Water Fire Sanitary north of CVAC-5

8" PVC	2500 lf	18.17	45,425.00
6" PVC	300 lf	9.50	2,850.00
4" PVC	300 lf	7.17	2,151.00
8" PVC Water Line Tap	1	3,000	3,000.00
4" Water Valve	3	519.00	1,557.00
6" Water Valve	4	543.00	2,172.00
8" Water Valve	6	950.00	5,700.00
8" Water Line Plug	1	400.00	400.00
Fire Hydrant	4	744.00	2,976.00
18 X 36 Trenching	3100 lf	8.90	27,590.00
¾" crushed stone	400 ton	22.00	8,800.00
24 x 24 Precast HH	4	1,500.00	6,000.00
Cleanout	8	400.00	3,200.00
Clean Out w/ Sampling Tee	4	1,500.00	6,000.00
Grease Trap	1	4,000.00	4,000.00
Sanitary Manholes	3	4,200.00	12,600.00

Total Includes OH & P \$ 161,305.00

Respectfully Submitted:

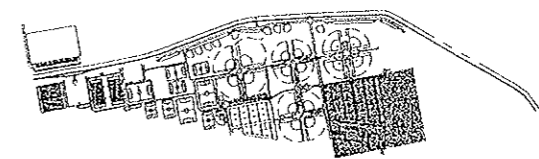
Kurt W. Frederich, President  
Frederich Construction Inc.



**GENERAL NOTES: (THIS SHEET ONLY)**

1. REFER TO BID PACKAGE 5 FOR RACEWAY TO NEW MAINTENANCE BUILDING AND ASSOCIATED SITE LOADS.

- - - - - PVC SDR 21 MAINLINE SIZE AS MARKED ON DRAWING
- |—|— 2" SCHEDULE 40 CONDUIT
- - - - - 14 GAUGE TRACER WIRE
- ⊗ ISOLATION GATE VALVE LINE SIZE MECHANICAL JOINT, 120" RISING STEM



KEYMAP



**EDSI**  
 ENGINEERING DESIGN  
 SOURCE, INC.  
 1415 ELBRIDGE PAYNE RD.  
 SUITE 255  
 CHESTERFIELD, MO. 63017  
 PH (636) 537-5585  
 FAX (636) 537-0275

**HORNER & SHIFRIN, INC.**  
 ENGINEERS  
 3100 OAKLAND AVE.  
 ST. LOUIS, MO 63103-4400  
 314.634.4333 FAX 314.634.4334  
 www.horner-shifrin.com

REVISIONS		DESCRIPTION
DATE	BY	

CITY OF CHESTERFIELD  
 CHESTERFIELD VALLEY  
 ATHLETIC COMPLEX  
 EXPANSION PACKAGE 7  
 F PARKING LOT SITE PLAN

**Not For Construction**

PROJECT #	26199-00
DATE	8/15/09
DRAWN BY	ITS
CHECKED BY	DKK

SHEET NUMBER  
**E0-7**

**F PARKING LOT SITE PLAN**  
 SCALE: 1"=60'

DWG: P:\07024\Cad\VE\07024-ED-7.dwg  
 PLOT DATE: 8/15/09 8:20:28 AM  
 PLOT USER: JLD  
 OPERATOR: HIRSHAW