



II. B.

690 Chesterfield Pkwy W • Chesterfield MO 63017-0760
Phone: 636-537-4000 • Fax 636-537-4798 • www.chesterfield.mo.us

October 1, 2007

Architectural Review Board
City of Chesterfield
690 Chesterfield Parkway West
Chesterfield, MO 63017

Re: Simply Self Storage: A Site Development Plan, Architectural Elevations, Landscape Plan and Architect's Statement of Design for a 2.31 acre parcel located east of the intersection of Long Road and Chesterfield Airport Road.

Dear Board Members:

Hernly Associates, Inc. has submitted on behalf of OB Companies, A Site Development Plan, Architectural Elevations, Landscape Plan and Architect's Statement of Design for the above referenced project. The Department of Planning and Public Works has reviewed this request and submits the following report.

Submittal Information

The request is for a 103,476 square foot retail and self storage building, located on a 2.31 acre parcel zoned "PC" Planned Commercial. The parcel is governed by the terms and conditions of City of Chesterfield Ordinance Number 2379. The exterior building materials will be comprised of masonry, glass, stucco and granitestone panel. The developer proposes integrated masonry columns, decorative window treatments, arches, finials, colored metal roofing, thick, sculpted trims and lively, colorful canopies. The roof will be standing seam metal, hip and low slope. Please see the attached checklist to review the project's compliance with the City of Chesterfield's Design Guidelines.

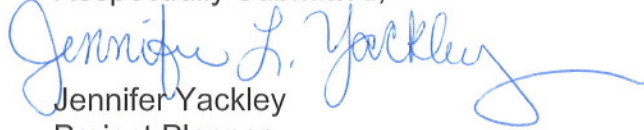
Departmental Input

The submittal was reviewed for compliance with the City of Chesterfield's Design Guidelines and City of Chesterfield Ordinance Number 2379. Landscape, lighting and signage are being addressed through the site plan review process for adherence to the City Code.

Actions Requested

The Department of Planning and Public Works requests action by the Architectural Review Board on the information presented.

Respectfully Submitted,



Jennifer Yackley
Project Planner

Respectfully Submitted,



Aimee Nassif
Senior Planner

Attachments

1. ARB Design Review Checklist
2. Architectural Review Packet Submittal

CITY OF CHESTERFIELD
Design Guidelines: Review Checklist

Project Name: Simply Self Storage

Date of Review: October 2, 2007

Guideline Description	Addressed as Written	Addressed with Modification (1)	Comments and Reference (2)
CHAPTER ONE: Site Layout			
A. Physical Features	X		
B. Vegetation	X		
C. Site Relationships	X		
D. Pedestrian & Vehicular Circulation	X		
E. Pedestrian Orientation	X		
CHAPTER TWO: Building all Structures			
I. All Structures:			
A. General Architectural Guidelines	X		

Guideline Description	Addressed as Written	Addressed with Modification (1)	Comments and Reference (2)
B. Scale	X		
C. Design	X		
D. Relation to Adjacent Development	X		
E. Material/Colors	X		
II. Residential Structures:			
A. General Residential Architecture	N/A		
B. Multiple-Family Architecture	N/A		
III. Non-residential Structures:			
A. General	X		
B. Building Equipment Service	X		
C. Fast Food Restaurant Guidelines	N/A		
D. Auto Service Station Guidelines	N/A		
E. Shopping Center Guidelines	X		
F. Chesterfield Valley Guidelines	X		

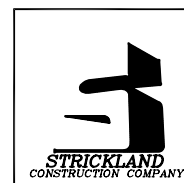
Guideline Description	Addressed as Written	Addressed with Modification (1)	Comments and Reference (2)
CHAPTER THREE: Landscape Design			Landscaping is being reviewed during site development plan review for adherence to the City Code.
CHAPTER FOUR: Miscellaneous			
A. Signage			Will be reviewed under a separate process.
B. Lighting			Lighting is being reviewed during site development plan review for adherence to City Code.
C. Utilities	X		
D. Stormwater Drainage	X		
E. Energy Conservation	X		
F. Screening (Fences & Walls)	X		

Notes:

- (1) A check in this column refers to the item being addressed in the submission, but with potential variation from the guidelines that review by the Board is specifically requested.
- (2) *Comments* provide additional information regarding the status of specific design guidelines. *Reference* is to the specific Architectural Review guideline as stated in the booklet entitled *Architectural Review Process*, Amended May 2001.

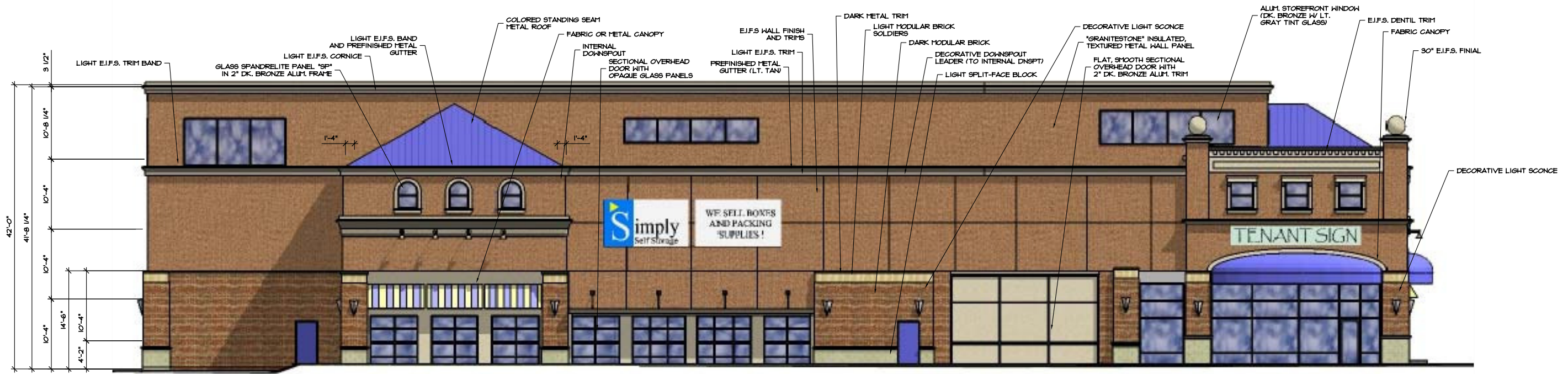
SIMPLY SELF STORAGE

17555 Chesterfield Airport Road
SEPTEMBER 27, 2007



Hernly
ASSOCIATES

920 Massachusetts
Lawrence, Kansas
66044
785 - 749 - 5806
FAX 785 - 749 - 1515



1 WEST ELEVATION
1/16" = 1'-0"



2 SOUTH ELEVATION
1/16" = 1'-0"

SIMPLY SELF STORAGE
CHESTERFIELD AIRPORT ROAD
CHESTERFIELD, MISSOURI

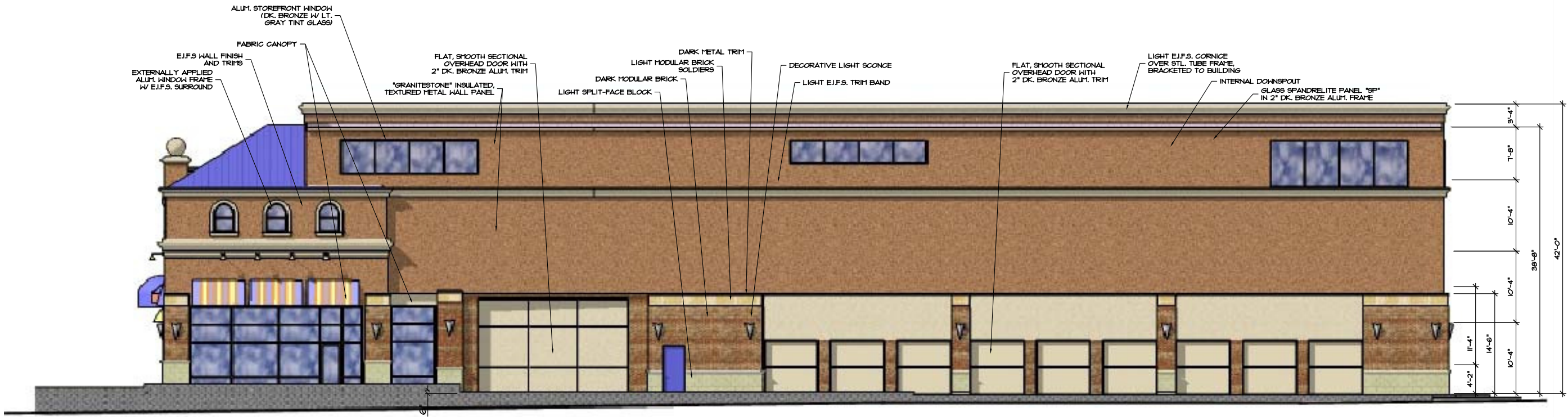
Hernly ASSOCIATES

920 Massachusetts
Lawrence, Kansas
66044
785 - 749 - 5806
FAX 785 - 749 - 1515

ELEVATIONS

Date: 04/17/07
Drawn by: MMYERS
Checked by:
Revisions:

A2.0



1 EAST ELEVATION
1/16" = 1'-0"



2 NORTH ELEVATION
1/16" = 1'-0"

SIMPLY SELF STORAGE
CHESTERFIELD AIRPORT ROAD
CHESTERFIELD, MISSOURI

Hernly ASSOCIATES

920 Massachusetts
Lawrence, Kansas 66044
785 - 749 - 5806
FAX 785 - 749 - 1515

ELEVATIONS

Date: 04/17/07
Drawn by: MYERS
Checked by:
Revisions:

A2.1



SIMPLY SELF STORAGE
CHESTERFIELD AIRPORT ROAD
CHESTERFIELD, MISSOURI

Hernly
ASSOCIATES

920 Massachusetts
Lawrence, Kansas
66044
785 - 749 - 5806
FAX 785 - 749 - 1515

AERIAL RENDERING

Date: 04/17/07
Drawn by: MMYERS
Checked by:
Revisions:



SIMPLY SELF STORAGE
CHESTERFIELD AIRPORT ROAD
CHESTERFIELD, MISSOURI



Hernly
ASSOCIATES

920 Massachusetts
Lawrence, Kansas
66044
785 - 749 - 5866
FAX 785 - 749 - 1515

ELEVATIONS

Date: 04/17/07
Drawn by: MYERS
Checked by:
Revisions:

1 VIEW FROM SOUTHWEST
NOT TO SCALE



SIMPLY SELF STORAGE
CHESTERFIELD AIRPORT ROAD
CHESTERFIELD, MISSOURI



**Hernly
ASSOCIATES**

920 Massachusetts
Lawrence, Kansas
66044
785 - 749 - 5806
FAX 785 - 749 - 1515

ELEVATIONS

Date: 04/17/07
Drawn by: MMYERS
Checked by:
Revisions:

1 VIEW FROM SOUTHEAST
NOT TO SCALE



SIMPLY SELF STORAGE
CHESTERFIELD AIRPORT ROAD
CHESTERFIELD, MISSOURI

Hernly
ASSOCIATES

920 Massachusetts
Lawrence, Kansas
66044
785 - 749 - 5806
FAX 785 - 749 - 1515

ELEVATIONS

Date: 09/17/07
Drawn by: MYERS
Checked by:
Revisions:



SIMPLY SELF STORAGE
CHESTERFIELD AIRPORT ROAD
CHESTERFIELD, MISSOURI

Hernly
ASSOCIATES

920 Massachusetts
Lawrence, Kansas
66044
785 - 749 - 5806
FAX 785 - 749 - 1515

ELEVATIONS

Date: 04/17/07
Drawn by: MYERS
Checked by:
Revisions:



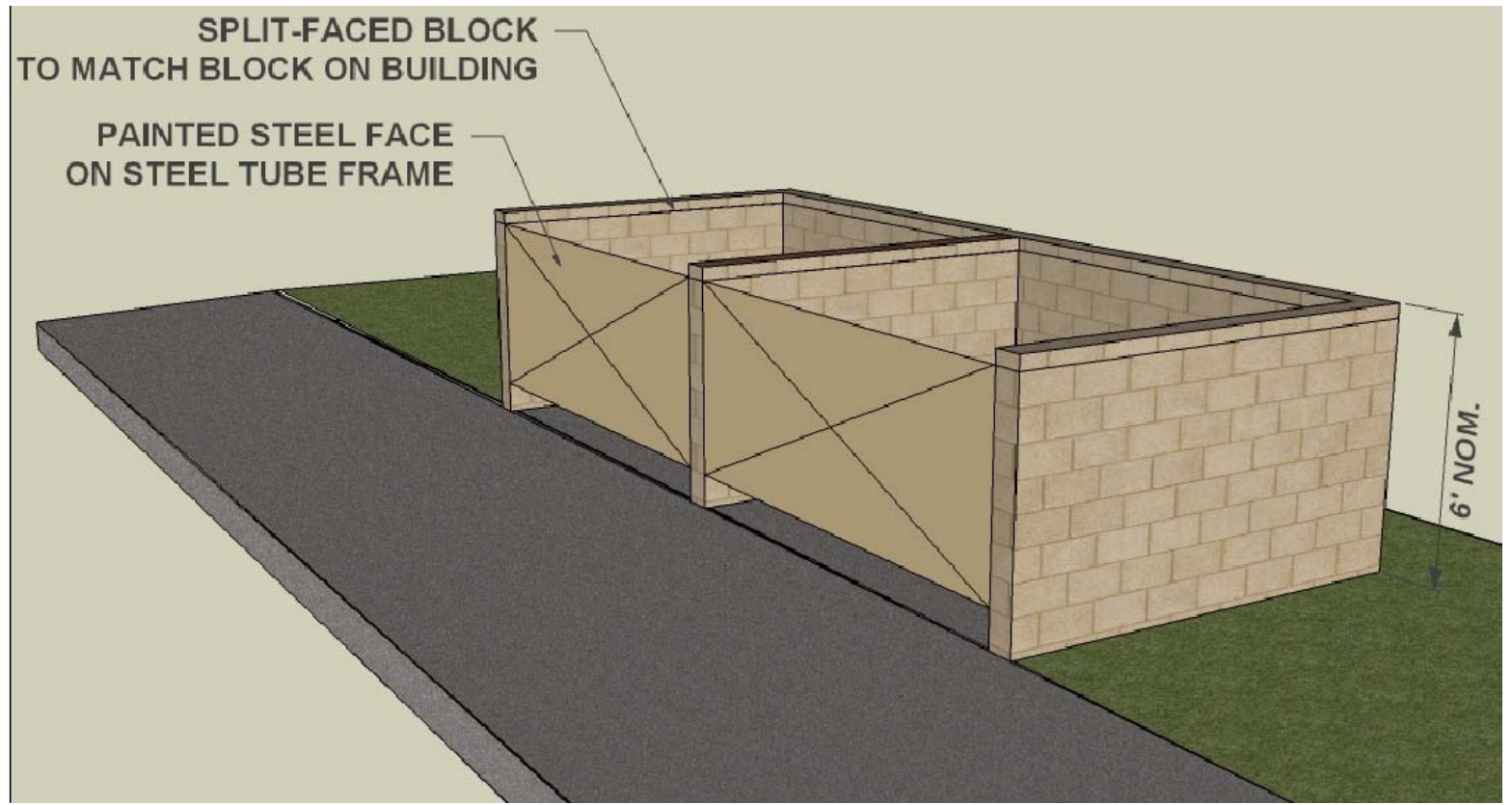
SIMPLY SELF STORAGE
CHESTERFIELD AIRPORT ROAD
CHESTERFIELD, MISSOURI

Hernly
ASSOCIATES

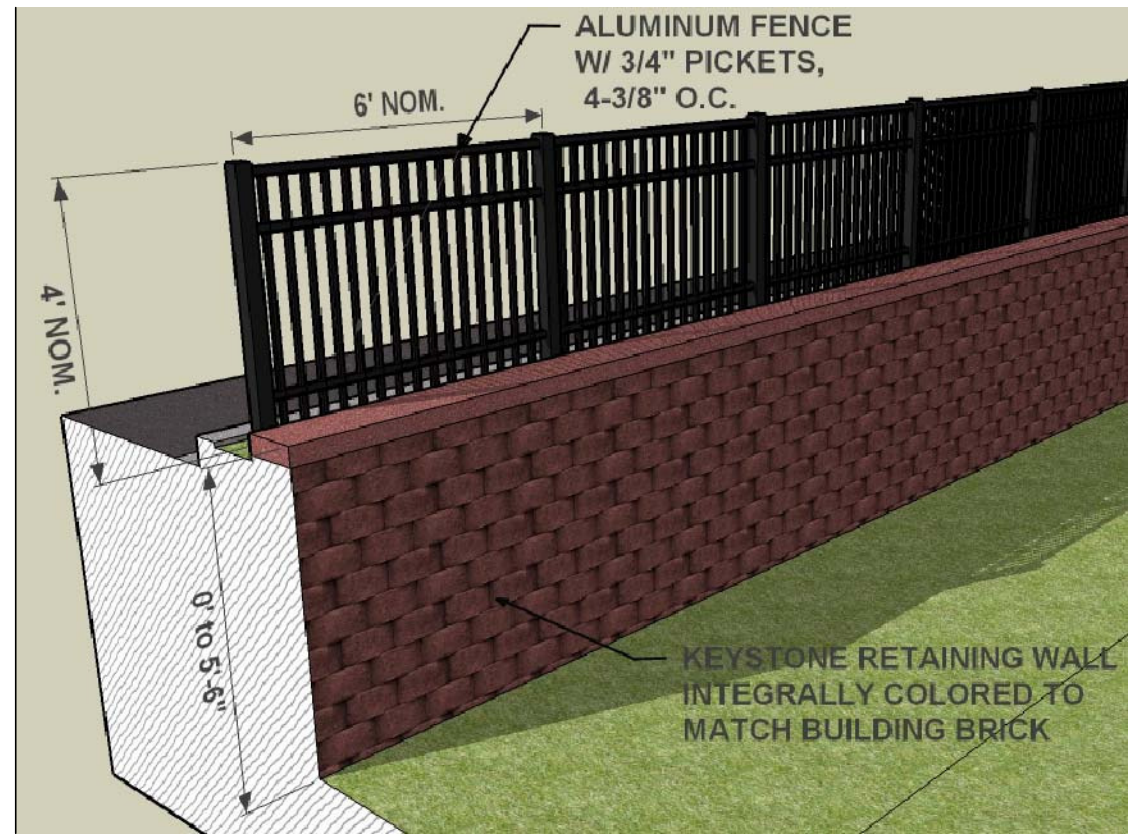
920 Massachusetts
Lawrence, Kansas
785 - 749 - 5806
FAX 785 - 749 - 1515

ELEVATIONS

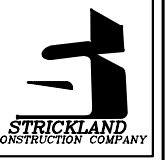
Date: 04/17/07
Drawn by: MYERS
Checked by:
Revisions:



1 DUMPSTER SCREEN DETAIL
NOT TO SCALE



2 RETAINING WALL AND FENCE DETAIL
NOT TO SCALE



SIMPLY SELF STORAGE
CHESTERFIELD AIRPORT ROAD
CHESTERFIELD, MISSOURI

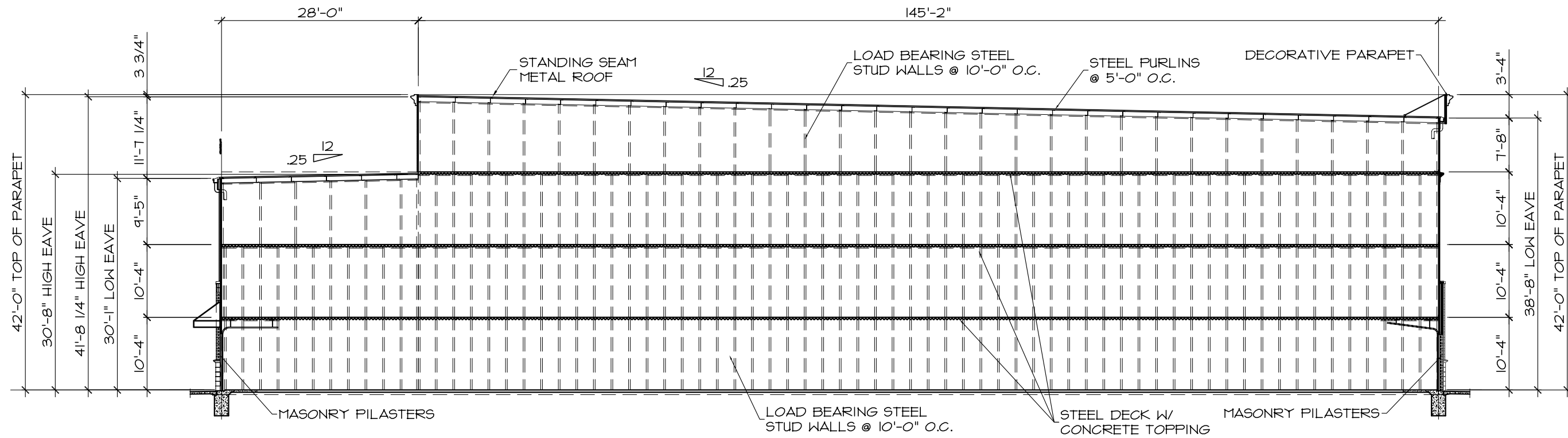
Hernly ASSOCIATES

920 Massachusetts
Lawrence, Kansas
66044
785 - 749 - 5806
FAX 785 - 749 - 1515

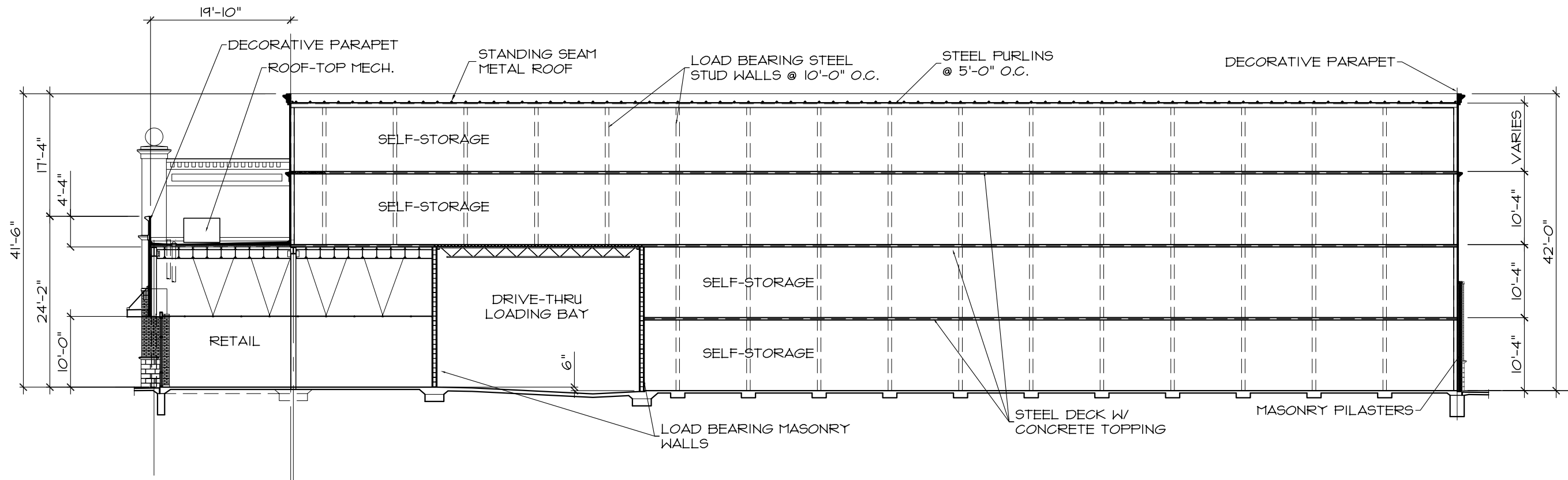
ELEVATIONS

Date: 04/11/07
Drawn by: MYERS
Checked by:
Revisions:

A2.8



1 BUILDING SECTION LOOKING NORTH
1/16" = 1'-0"



2 BUILDING SECTION LOOKING WEST
1/16" = 1'-0"

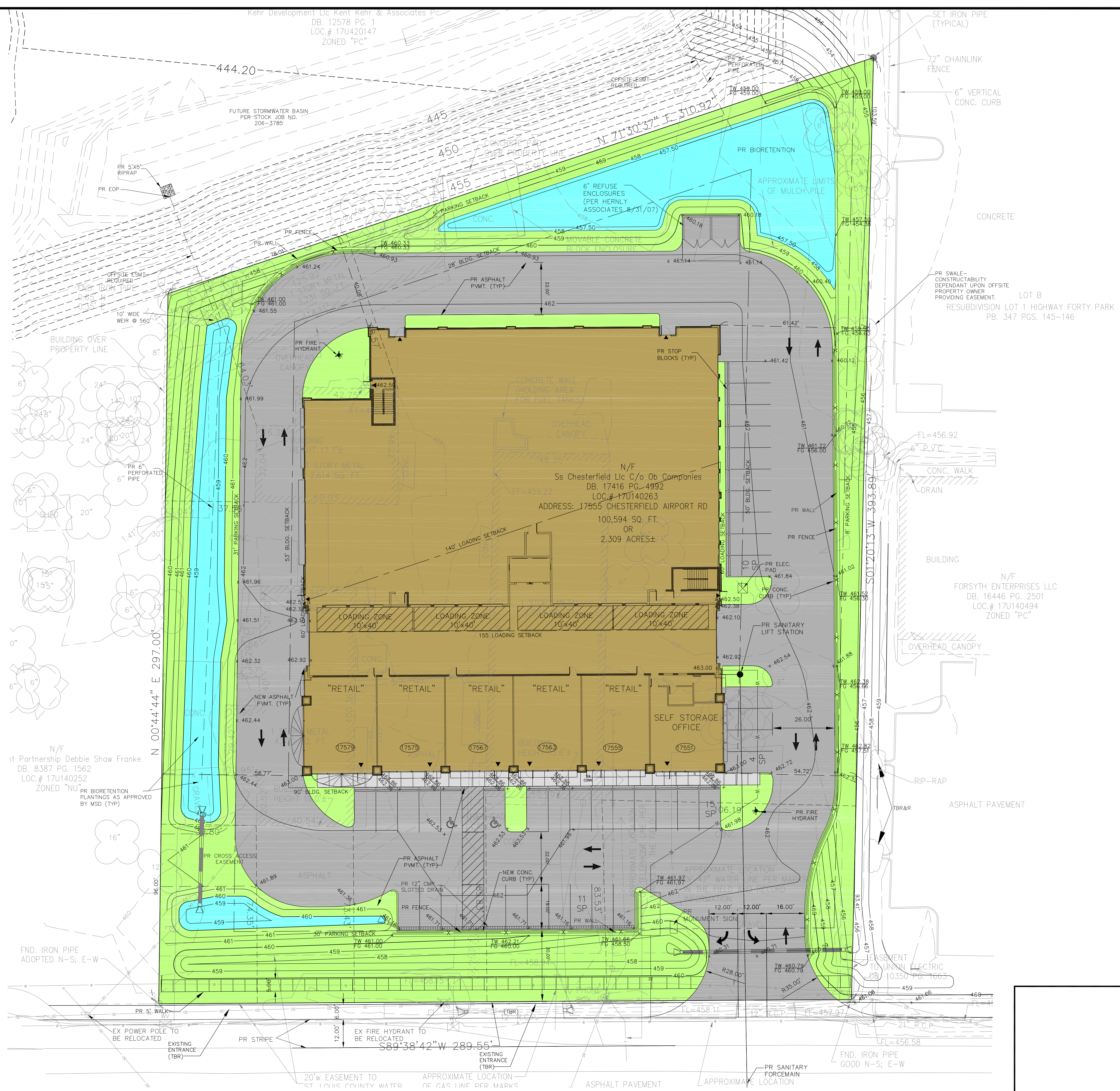
SIMPLY SELF STORAGE
CHESTERFIELD AIRPORT ROAD
CHESTERFIELD, MISSOURI

Hernly ASSOCIATES

920 Massachusetts
Lawrence, Kansas
66044
785 - 749 - 5806
FAX 785 - 749 - 1515

WALL SECTIONS

Date: 07/17/07
Drawn by: MMYERS
Checked by:
Revisions:



SIMPLY STORAGE
 COLOR SITE PLAN

Stock & Associates
 Consulting Engineers, Inc.

257 Chesterfield Business Parkway
 St. Louis, MO 63005
 PH. (636) 530-9100
 FAX (636) 530-9130
 e-mail: general@stockassoc.com
 Web: www.stockassoc.com

DRAWN BY:	DATE:	CHECKED BY:	DATE:	JOB NUMBER:	SHEET:
GEORGE M. STOCK	09/26/07	C.A.M.	09/26/07	207-4137	1 of 1

LOOKING EAST (FROM EASTSIDE OF SITE)



LOOKING SOUTH (FROM SOUTH SIDE OF SITE)



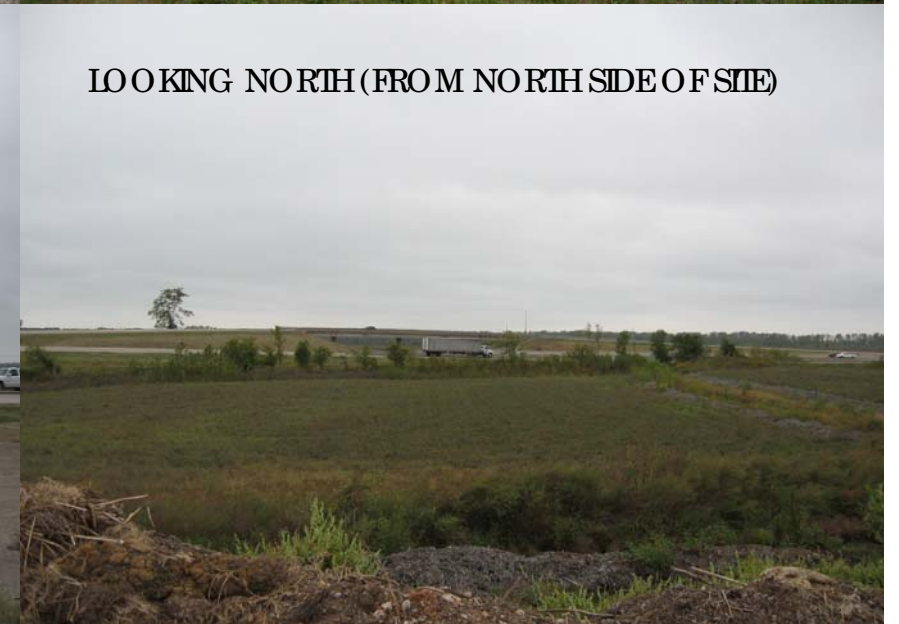
LOOKING SW (FROM SOUTH SIDE OF SITE)



LOOKING WEST FROM SW CORNER OF SITE



LOOKING NORTH (FROM NORTH SIDE OF SITE)



LOOKING EAST (FROM REAR EASTSIDE OF SITE)



LOOKING SOUTHEAST (FROM BACK OF SITE)



LOOKING SOUTH (FROM CENTER OF SITE)

