



VILA

690 Chesterfield Pkwy W • Chesterfield MO 63017-0760
Phone: 636-537-4000 • Fax 636-537-4798 • www.chesterfield.mo.us

October 3, 2007

Planning Commission
City of Chesterfield
690 Chesterfield Parkway West
Chesterfield, MO 63017

The Planning Commission agenda for **October 8, 2007** will include the following item for your consideration:

Forest Lake Tennis Club (1012 North Woods Mill Road): A Partially Amended Landscape Plan, for a 6.14 acre tract of land zoned "C-8" Planned Commercial District, located north of Ladue Road and south of Olive Boulevard.

Planning Commission:

Forest Lake Tennis Club Inc. has submitted a partially amended landscape plan for your review. The Department of Planning and Public Works has reviewed this submittal and submits the following report.

BACKGROUND

1. On June 1, 1976, St. Louis County approved Ordinance Number 7356 to rezone the property from "R-3" Residence District to "C-8" Planned Commercial District.

SUBMITTAL INFORMATION

1. The request is for the planting of thirty-two (32) evergreen shrubs for the purpose of screening four (4) air conditioning units mounted at ground level along the north property line at 1012 North Woods Mill Road, the property known as the Forest Lake Tennis Club.
2. Previous screening incorporated a wood fence along the north side of the property.

3. St. Louis County Ordinance number 7356 states that, "Air conditioning and/or ventilating equipment if provided on the exterior of the proposed structure shall be located and screened as approved by the Planning Commission."

DEPARTMENTAL INPUT

The submittal was reviewed for compliance with City of Chesterfield ordinances. The Department of Planning requests approval of the Partially Amended Landscape Plan.

Respectfully submitted,



Shawn P. Seymour
Project Planner

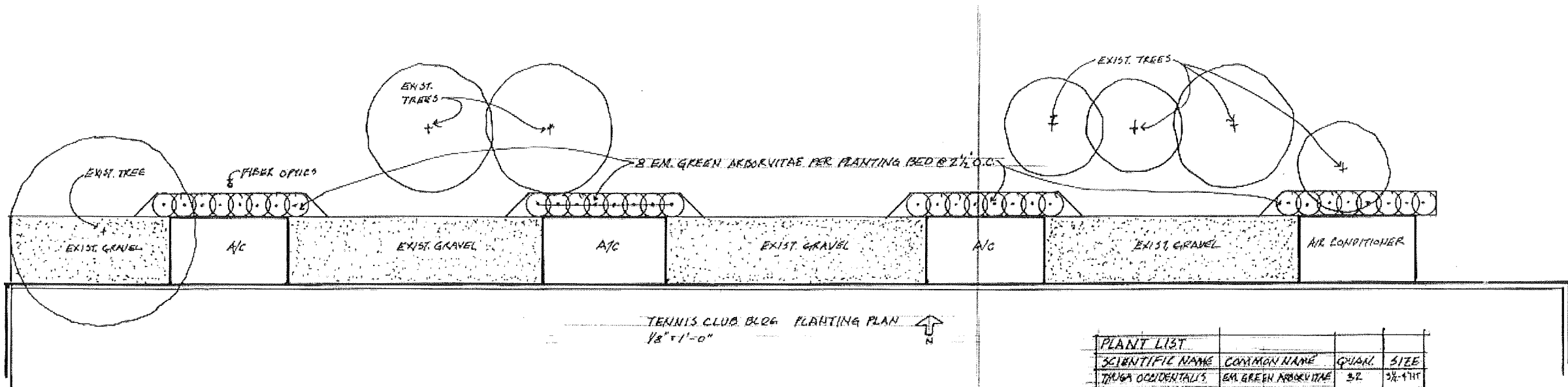
Respectfully submitted,



Mara M. Perry, AICP
Senior Planner of Plan Review

Cc: City Administrator
City Attorney
Director of Planning and Public Works

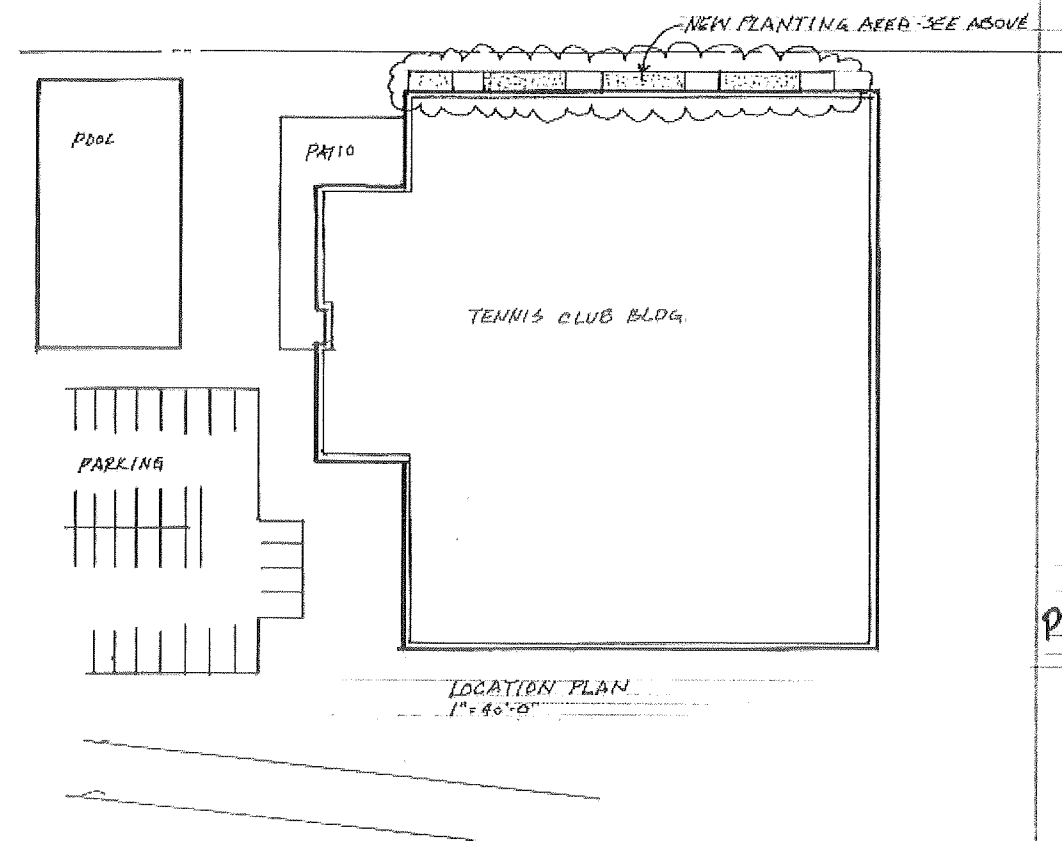
Attachments: Partially Amended Landscape.



PLANT LIST

SCIENTIFIC NAME	COMMON NAME	QUAL.	SIZE
TRINIA OCCIDENTALIS	EM. GREEN ARBOREVIATAE	3/2	3/4-1 1/4"
BERBERIS GREEN			

3 C.Y. HARDWOOD BARK MULCH (TOP DRESSING)
3 C.Y. TOP SOIL / PEAT PLANTING MIX



FOREST LAKE TENNIS CLUB
PARTIAL AMENDED LANDSCAPE PLAN
4 SEPTEMBER 2007



7
10/10/07
10/10/07
10/10/07