



690 Chesterfield Pkwy W • Chesterfield MO 63017-0760
Phone: 636-537-4000 • Fax 636-537-4798 • www.chesterfield.mo.us

**Department of Planning & Public Works
City of Chesterfield
Public Hearing Summary Report**

T.S.P. 30-2011 AT&T (16641 Old Chesterfield Road): A request to obtain approval for a Telecommunication Facility Siting Permit for a collocation of additional antennas and equipment on an existing monopole in a “C7” General Extensive Commercial District – zoned property located on the north side of Old Chesterfield Road east of Baxter Road (17T310247).

Summary

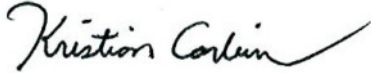
The above-referenced project is a request for a Telecommunications Siting Permit (T.S.P.). If the request is approved, the Permit will allow the placement of three (3) antennas from AT&T on an existing monopole tower located on the north side of Old Chesterfield Road east of Baxter Road. Additional equipment to support the new antennas is proposed to be placed at ground level.

City of Chesterfield Ordinance 2391, which now governs telecommunications and facilities siting, requires a public hearing before the City of Chesterfield Planning Commission for alterations that present a material change. Please note, the Commission does not provide a recommendation to the City Council, but rather a list of issues generated during the hearing. City Council is the decision-making body for all requests for Telecommunications Siting Permits. A public hearing further addressing the request will be held at the September 26, 2011 City of Chesterfield Planning Commission meeting.



Attached please find a copy of the Public Hearing Notice and an application packet detailing the Petitioner's request.

Respectfully submitted,

A handwritten signature in black ink that reads "Kristian Corbin". The signature is written in a cursive style with a long, sweeping tail.

Kristian Corbin
Project Planner

Cc: Michael G. Herring, City Administrator
Rob Heggie, City Attorney
Michael O. Geisel, Director of Planning and Public Works
Aimee Nassif, Planning and Development Services Director



June 24, 2011

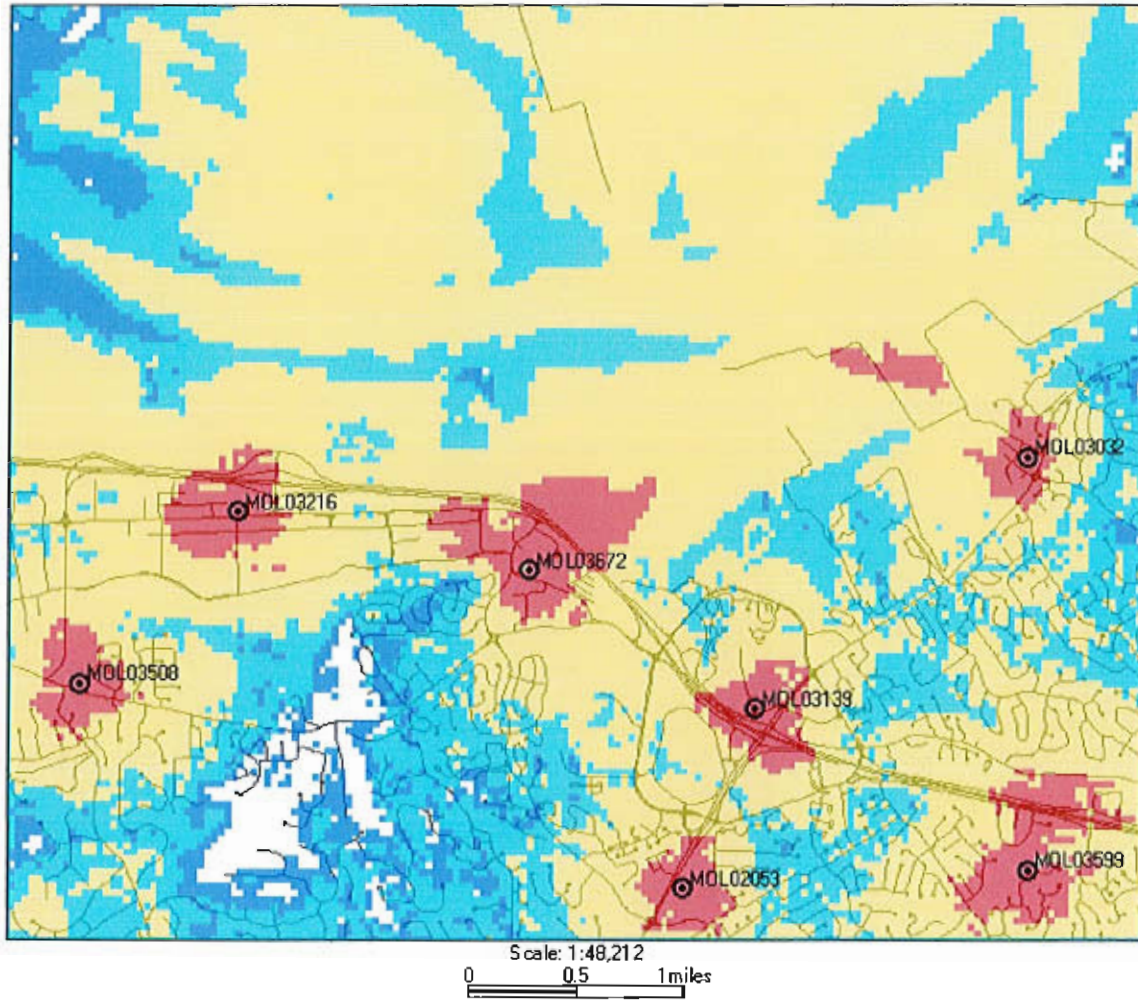
The following is a brief explanation of why AT&T Mobility is proposing to have the current wireless communication facility at 16643 Chesterfield Airport Road modified. This facility is labeled as MOL03672 on Map 1. Currently this facility is only capable of broadcasting our older technologies.

This facility currently is broadcasting our "2G" technology (called GSM) and our "3G" technology (called UMTS). Each technology uses its own antennas and equipment. The modification we are proposing is to add our "4G" technology (called LTE). Perhaps you have seen all the television commercials from various wireless carriers talking about their 4G systems. 4G, short for 4th generation of wireless technology, allows wireless carriers to provide much faster data speeds than our current networks. 4G is only for data at this point. All voice calls will still be served on older technologies. Currently AT&T still has the fastest data network. Although as other carriers implement and optimize their 4G networks we expect to lose that advantage and eventually fall behind other carriers unless we also launch our 4G network. The proposed modifications will allow us to implement our 4G technology by using additional antennas and equipment.

Because of national E911 requirements, this site needs to run all technologies. The 4G technology is not capable of handling voice calls at this time and all 911 calls made from a wireless device will be routed through our older technologies. These technologies require that we use a total of 3 antennas for each direction covered. This site, like most of our locations, serves three directions creating a need for 9 antennas. This requires us to add 3 additional antennas for this location.

This plan will have no effect on our coverage for current technologies. Map 1 below shows the proposed coverage for our 4G network in the area. AT&T Mobility has acceptable coverage in most of the surrounding area. Because 4G is a data only service the different signal levels don't indicate whether service exists or not. In general on 4G the stronger the signal (to a point) the faster the data rates will be. It is expected that red, yellow and light blue will have data speeds faster than our 3G technology. The dark blue will likely have data speeds nearly identical to the 3G technology.

Map 1 Proposed AT&T "4G" coverage



Ron Humphrey

Radio Frequency Design Engineer

AT&T Mobility Division

MO3672 FAWCETT



LTE 100' - MONOPOLE

RECEIVED
SEP - 8 2011
DEPT. OF TRANSPORTATION
& PUBLIC SAFETY



13075 MANCHESTER RD, SUITE 100
ST LOUIS, MO 63131



1095D GRANDMEW DRIVE
OVERLAND PARK, KANSAS 66210
(913) 458-2000

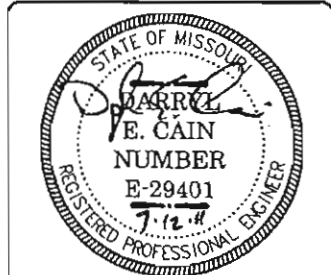
BLACK & VEATCH PROFESSIONAL ENGINEERING CORPORATION
MISSOURI STATE CERTIFICATE OF AUTHORITY # 001848

PROJECT NO: 168986

DRAWN BY: MAK

CHECKED BY: GPX

REV	DATE	DESCRIPTION
1	07/12/11	MISC REVISIONS
0	04/26/11	ISSUED FOR ZONING



DARRYL E. CAIN E-29401
PROFESSIONAL ENGINEER

IT IS A VIOLATION OF LAW FOR ANY PERSON,
UNLESS THEY ARE ACTING UNDER THE DIRECTION
OF A LICENSED PROFESSIONAL ENGINEER,
TO ALTER THIS DOCUMENT.

MO3672
FAWCETT
16643 CHESTERFIELD AIRPORT RD
CHESTERFIELD, MO 63017
AKA 16641 OLD CHESTERFIELD RD
LTE - MONOPOLE

SHEET TITLE
TITLE SHEET

SHEET NUMBER
T-1

ENGINEERING

2009 INTERNATIONAL BUILDING CODE
2008 NATIONAL ELECTRIC CODE
ANSI/TIA-222-G OR LATEST EDITION

GENERAL NOTES

THE FACILITY IS UNMANNED AND NOT FOR HUMAN HABITATION. A TECHNICIAN WILL VISIT THE SITE AS REQUIRED FOR ROUTINE MAINTENANCE. THE PROJECT WILL NOT RESULT IN ANY SIGNIFICANT DISTURBANCE OR EFFECT ON DRAINAGE; NO SANITARY SEWER SERVICE, POTABLE WATER, OR TRASH DISPOSAL IS REQUIRED AND NO COMMERCIAL SIGNAGE IS PROPOSED.

PROJECT DESCRIPTION

THE PROJECT CONSISTS OF THE INSTALLATION AND OPERATION OF ANTENNAS AND ASSOCIATED EQUIPMENT CABINETS FOR AT&T'S CONDUCTORLESS TELECOMMUNICATIONS NETWORK. INSTALLATION OF (3) RRHs, (1) FIBER TRUNK CABLE, (2) DC POWER TRUNK CABLES, (1) RAYCAP SURGE PROTECTOR, (1) LTE RACK, (3) LTE ANTENNAS INCLUDING (1) GPS ANTENNA ARE PROPOSED.

SITE INFORMATION

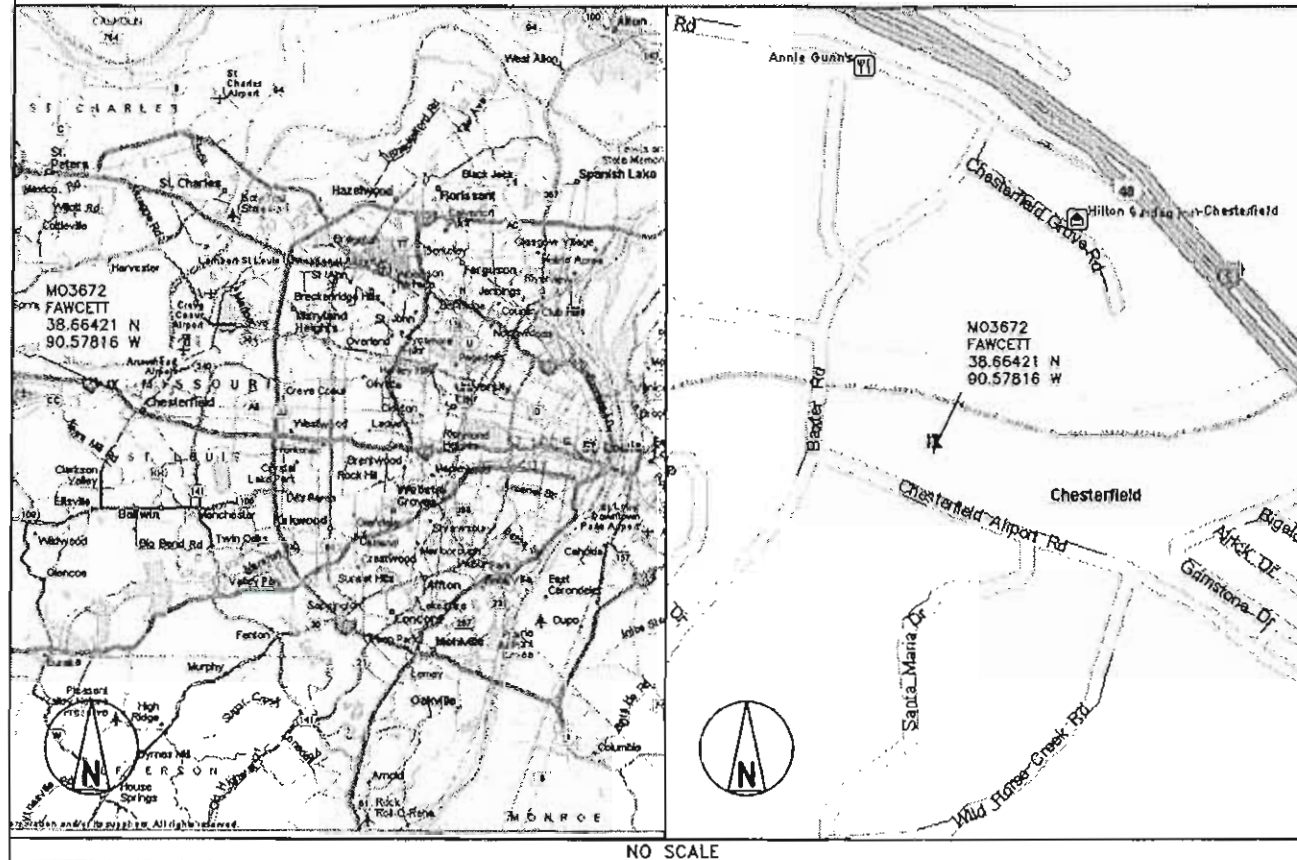
PROPERTY OWNER: CHARLES W. FAWCETT
ADDRESS: NA
TOWER OWNER: AT&T
SITE NAME: FAWCETT
SITE NUMBER: MO3672
SITE CONTACT: NA
SITE ADDRESS: 16643 CHESTERFIELD AIRPORT RD, CHESTERFIELD, MO 63017
AKA 16641 OLD CHESTERFIELD RD.
COUNTY: ST. LOUIS COUNTY
LATITUDE (NAD 83): 38° 39' 51.16" N
38.66421
LONGITUDE (NAD 83): 90° 34' 41.38" W
-90.57818
GROUND ELEVATION: 485' AMSL
RAD CENTER: 98' AGL
ZONING JURISDICTION: CITY OF CHESTERFIELD, MO
ZONING DISTRICT: PI (PLANNED INDUSTRIAL)
PARCEL #: 171310247
OCCUPANCY GROUP: U
CONSTRUCTION TYPE: V-B
POWER COMPANY: AMEREN MO
TELEPHONE COMPANY: AT&T
SITE ACQUISITION CONTACT: DOUC KONRATH
(314) 605-7542
RF ENGINEER: RON HUMPHREY
CONSTRUCTION MANAGER: KEN SHAW
(314) 210-8629

IF USING 11"X17" PLOT, DRAWINGS
WILL BE HALF SCALE

CONTACT INFORMATION

ENGINEER: 15450 S OUTER FORTY DR, SUITE 200
CHESTERFIELD, MO 63017
CONTACT: GEORGE P. XENOS
PHONE: (913) 887-9233

LOCATION MAPS



DRIVING DIRECTIONS

DIRECTIONS FROM NEAREST AT&T OFFICE:

TURN LEFT ONTO PINE ST FOR 0.9 MI, KEEP LEFT ONTO RAMP FOR 0.2 MI, TAKE RAMP ONTO I-64 FOR 19.5 MI, AT EXIT 19A, TAKE RAMP ONTO N OUTER FORTY DR FOR 0.5 MI, TURN LEFT ONTO CHESTERFIELD PKWY N FOR 120 YDS, BEAR RIGHT ONTO LOCAL ROAD FOR 120 YDS, KEEP STRAIGHT ONTO CHESTERFIELD AIRPORT RD FOR 0.7 MI, TURN RIGHT ONTO LOCAL ROADS FOR 43 YDS.

APPROVALS

THE FOLLOWING PARTIES HEREBY APPROVE AND ACCEPT THESE DOCUMENTS AND AUTHORIZE THE SUBCONTRACTOR TO PROCEED WITH THE CONSTRUCTION DESCRIBED HEREIN. ALL DOCUMENTS ARE SUBJECT TO REVIEW BY THE LOCAL BUILDING DEPARTMENT AND MAY IMPOSE CHANGES OR MODIFICATIONS.

AT&T RF: _____ DATE: _____
AT&T OPERATIONS: _____ DATE: _____
AT&T SITE AQ: _____ DATE: _____
OCI: _____ DATE: _____
PROPERTY OWNER: _____ DATE: _____
MUNICIPAL: _____ DATE: _____

DRAWING INDEX

SHEET NO:	SHEET TITLE
T-1	TITLE SHEET
Z-1	SITE SURVEY (BY OTHERS)
Z-2	OVERALL SITE PLAN
Z-3	SITE PLAN
Z-4	SITE ELEVATION
Z-5	SITE ELEVATIONS
Z-6	ANTENNA/RRH MOUNT DETAIL

DO NOT SCALE DRAWINGS

SUBCONTRACTOR SHALL VERIFY ALL PLANS & EXISTING DIMENSIONS & CONDITIONS ON THE JOB SITE & SHALL IMMEDIATELY NOTIFY THE ENGINEER IN WRITING OF ANY DISCREPANCIES BEFORE PROCEEDING WITH THE WORK OR BE RESPONSIBLE FOR SAME



TO OBTAIN LOCATION OF PARTICIPANTS UNDERGROUND FACILITIES BEFORE YOU DIG IN MISSOURI, CALL MISSOURI ONE CALL

TOLL FREE: 1-800-344-7483 OR
www.mo1call.com

MISSOURI STATUTE REQUIRES MIN OF 2 WORKING DAYS NOTICE BEFORE YOU EXCAVATE



13075 MANCHESTER RD, SUITE 100
ST LOUIS, MO 63131



BLACK & VEATCH

10950 GRANDVIEW DRIVE
OVERLAND PARK, KANSAS 66210
(913) 458-2000

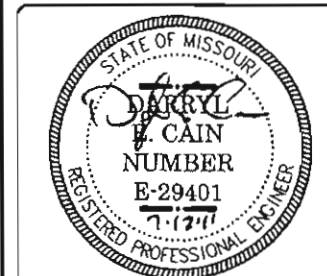
BLACK & VEATCH PROFESSIONAL ENGINEERING CORPORATION
MISSOURI STATE CERTIFICATE OF AUTHORITY # 001848

PROJECT NO: 168986

DRAWN BY: MAK

CHECKED BY: GPX

REV	DATE	DESCRIPTION
1	07/12/11	MISC REVISIONS
0	04/28/11	ISSUED FOR ZONING



DARRYL E. CAIN E-29401
PROFESSIONAL ENGINEER

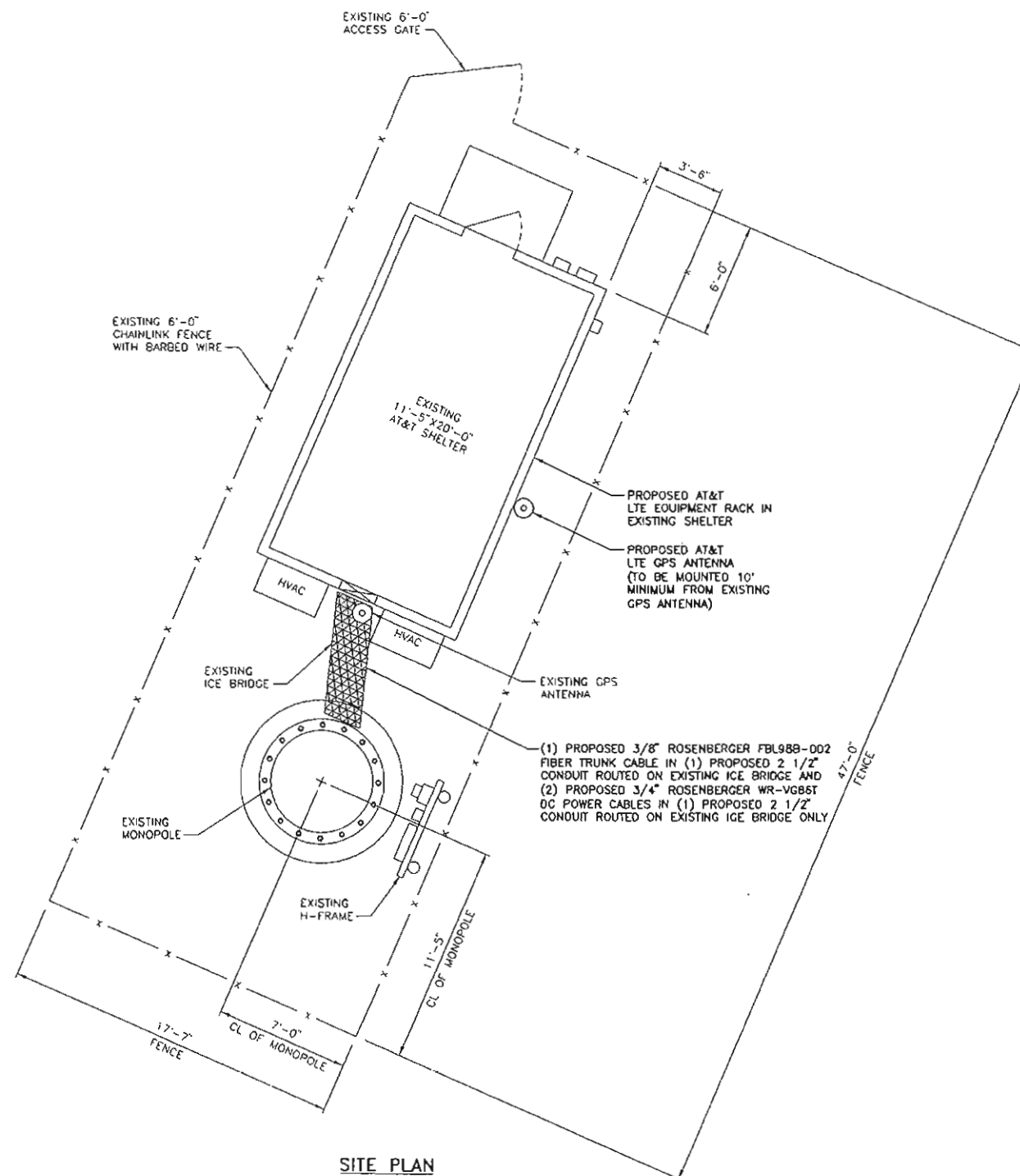
IT IS A VIOLATION OF LAW FOR ANY PERSON,
UNLESS THEY ARE ACTING UNDER THE DIRECTION
OF A LICENSED PROFESSIONAL ENGINEER,
TO ALTER THIS DOCUMENT.

M03672
FAWCETT
16643 CHESTERFIELD AIRPORT RD
CHESTERFIELD, MO 63017
AKA 16641 OLD CHESTERFIELD RD
LTE - MONOPOLE

SHEET TITLE
SITE PLAN

SHEET NUMBER

Z-3



SITE PLAN
SCALE: 1/4" = 1'-0"



LEGEND

FENCE	— X — X — X —
LEASE AREA	— —
ICE BRIDGE	
OVERHEAD POWER	— OHP — OHP — OHP —
UNDERGROUND POWER	— UGP — UGP — UGP —
OVERHEAD UTILITIES	— OHU — OHU — OHU —
UNDERGROUND TELCO	— UGT — UGT — UGT —



13075 MANCHESTER RD, SUITE 100
ST LOUIS, MO 63131



BLACK & VEATCH

10950 GRANDVIEW DRIVE
OVERLAND PARK, KANSAS 66210
(813) 458-2000

BLACK & VEATCH PROFESSIONAL ENGINEERING CORPORATION
MISSOURI STATE CERTIFICATE OF AUTHORITY # 001648

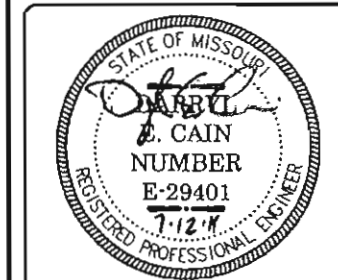
PROJECT NO: 168986

DRAWN BY: MAK

CHECKED BY: GPX

REV	DATE	DESCRIPTION
1	07/12/11	MISC REVISIONS
0	04/26/11	ISSUED FOR ZONING

REV	DATE	DESCRIPTION
1	07/12/11	MISC REVISIONS
0	04/26/11	ISSUED FOR ZONING



DARRYL E. CAIN E-29401
PROFESSIONAL ENGINEER

IT IS A VIOLATION OF LAW FOR ANY PERSON, UNLESS THEY ARE ACTING UNDER THE DIRECTION OF A LICENSED PROFESSIONAL ENGINEER, TO ALTER THIS DOCUMENT.

MO3672
FAWCETT
16643 CHESTERFIELD AIRPORT RD
CHESTERFIELD, MO 63017
AKA 16641 OLD CHESTERFIELD RD
LTE - MONOPOLE

SHEET TITLE
SITE ELEVATION

SHEET NUMBER

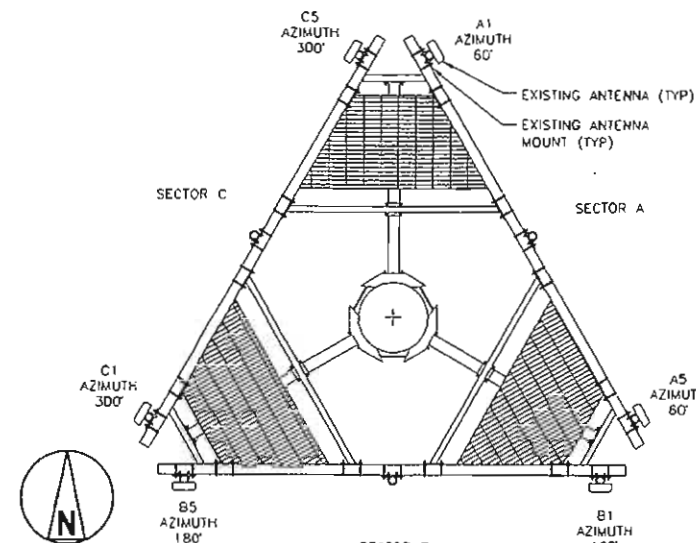
Z-4

NOTES

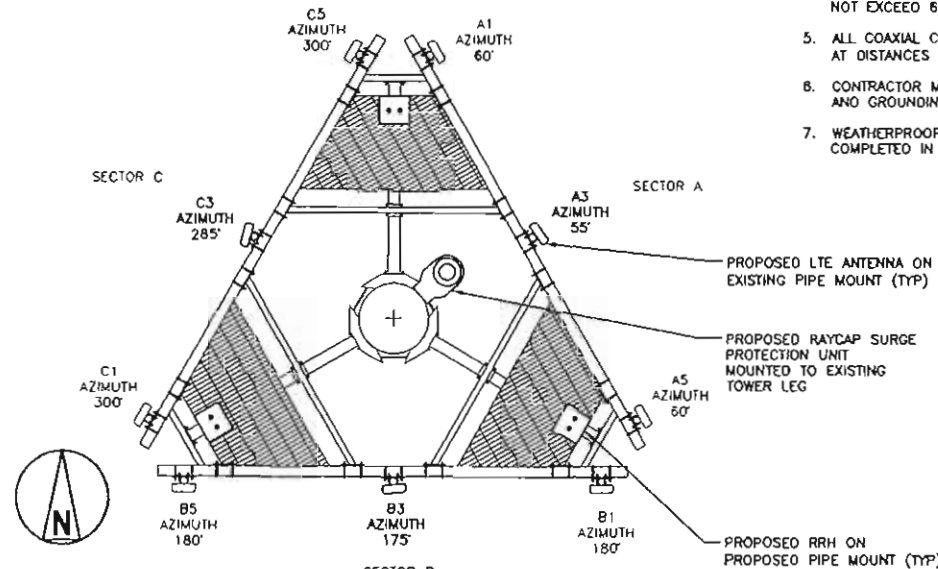
- ALL MAIN CABLES WILL BE GROUNDED W/ COAXIAL CABLE GROUNDING KITS AT:
 - THE ANTENNA LEVEL.
 - MID LEVEL IF TOWER IS OVER 200'.
 - BASE OF TOWER PRIOR TO TURNING HORIZONTAL.
 - OUTSIDE THE EQUIPMENT SHELTER AT ENTRY PORT.
 - INSIDE THE EQUIPMENT SHELTER AT THE ENTRY PORT.
- ALL PROPOSED GROUNDING BAR DOWNLEADS ARE TO BE TERMINATED TO THE EXISTING ADJACENT GROUNDING BAR DOWNLEADS A MINIMUM DISTANCE OF 4'-0" BELOW GROUNDING BAR. TERMINATIONS MAY BE EXOTHERMIC OR COMPRESSION.
- THE SUB CONTRACTORS SHALL BE RESPONSIBLE FOR VERIFYING THE ANTENNA AND THE COAX CONFIGURATION, MAKE AND MODELS, PRIOR TO INSTALLATION.
- ALL CONNECTIONS FOR HANGERS, SUPPORTS, BRACING, ETC. SHALL BE INSTALLED PER TOWER MANUFACTURER'S STANDARD DETAILS.
- THE EXISTING TOWER IS CURRENTLY BEING ANALYZED BY OTHERS TO DETERMINE ITS STRUCTURAL CAPACITY TO CARRY THE PROPOSED NEW COAX AND ANTENNAS. THESE DRAWINGS HAVE BEEN CREATED BASED ON THE ASSUMPTION THE STRUCTURAL ANALYSIS WILL SHOW THAT THE TOWER HAS SUFFICIENT CAPACITY TO SUPPORT THE PROPOSED NEW LOADS. INSTALLATION OF THE COAX AND ANTENNAS SHALL NOT COMMENCE UNTIL AN APPROVED STRUCTURAL ANALYSIS HAS BEEN RECEIVED BY THE OWNER OR AT&T AND HAS BEEN REVIEWED BY BLACK AND VEATCH.
- SUBCONTRACTOR SHALL REFERENCE THE TOWER STRUCTURAL ANALYSIS/DESIGN DRAWINGS FOR DIRECTIONS ON CABLE DISTRIBUTION/ROUTING.

COAXIAL ANTENNA CABLE NOTES

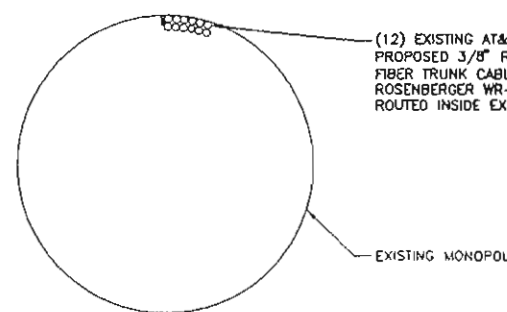
- TYPES AND SIZES OF THE ANTENNA CABLE ARE BASED ON ESTIMATED LENGTHS. PRIOR TO ORDERING CABLE, SUBCONTRACTOR SHALL VERIFY ACTUAL LENGTH BASED ON CONSTRUCTION LAYOUT AND NOTIFY THE PROJECT MANAGER IF ACTUAL LENGTHS EXCEED ESTIMATED LENGTHS.
- SUB CONTRACTOR SHALL VERIFY THE DOWN-TILT OF EACH ANTENNA WITH A DIGITAL LEVEL.
- CONTRACTOR TO CONFIRM COAX COLOR CODING PRIOR TO CONSTRUCTION. REFER TO "ANTENNA SYSTEM LABELING STANDARD" NO-00027 REFER TO THE LATEST VERSION.
- ALL JUMPERS TO THE ANTENNAS FROM THE MAIN TRANSMISSION LINE WILL BE 1/2" DIA. LDF AND SHALL NOT EXCEED 6'-0".
- ALL COAXIAL CABLE WILL BE SECURED TO THE DESIGNED SUPPORT STRUCTURE, IN AN APPROVED MANNER, AT DISTANCES NOT TO EXCEED 4'-0" OC.
- CONTRACTOR MUST FOLLOW ALL MANUFACTURER'S RECOMMENDATIONS REGARDING BOTH THE INSTALLATION AND GROUNDING OF ALL COAXIAL CABLES, CONNECTORS, ANTENNAS, AND ALL OTHER EQUIPMENT.
- WEATHERPROOF ALL ANTENNA CONNECTORS WITH SELF AMALGAMATING TAPE. WEATHERPROOFING SHALL BE COMPLETED IN STRICT ACCORDANCE WITH AT&T STANDARDS.



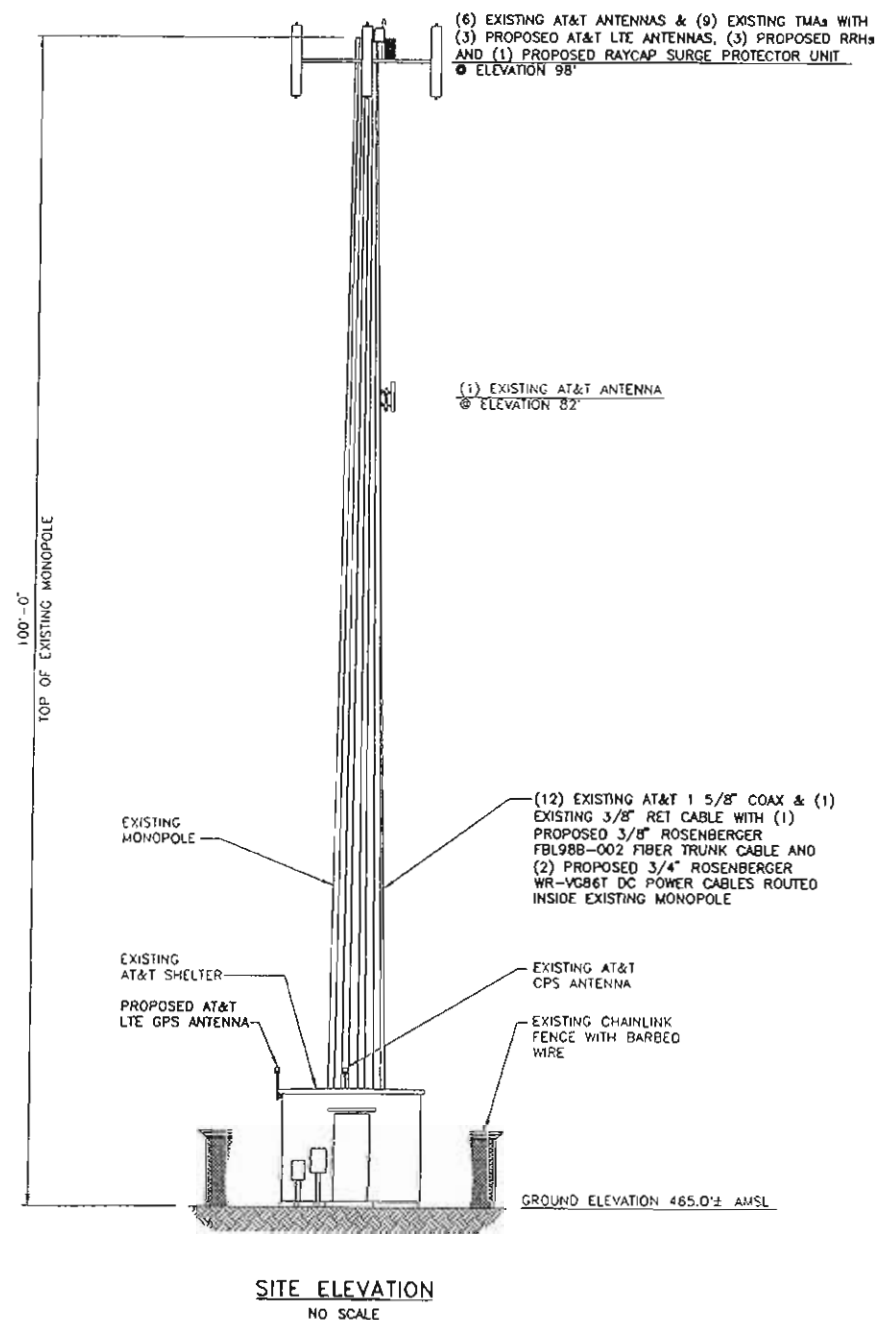
EXISTING ANTENNA LAYOUT
NO SCALE



PROPOSED ANTENNA LAYOUT
NO SCALE



COAX ROUTING DETAIL
NO SCALE



SITE ELEVATION
NO SCALE



13075 MANCHESTER RD, SUITE 100
ST LOUIS, MO 63131



BLACK & VEATCH

10950 GRANDVIEW DRIVE
OVERLAND PARK, KANSAS 66210
(913) 458-2000

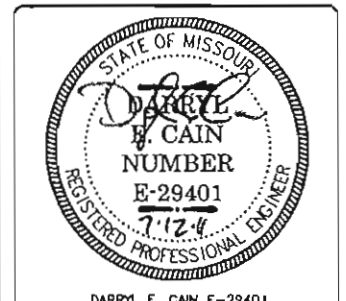
BLACK & VEATCH PROFESSIONAL ENGINEERING CORPORATION
MISSOURI STATE CERTIFICATE OF AUTHORITY # 001644

PROJECT NO: 168986

DRAWN BY: MAK

CHECKED BY: GPX

REV	DATE	DESCRIPTION
1	07/12/11	MISC REVISIONS
0	04/26/11	ISSUED FOR ZONING



DARRYL E. CAIN E-29401
PROFESSIONAL ENGINEER

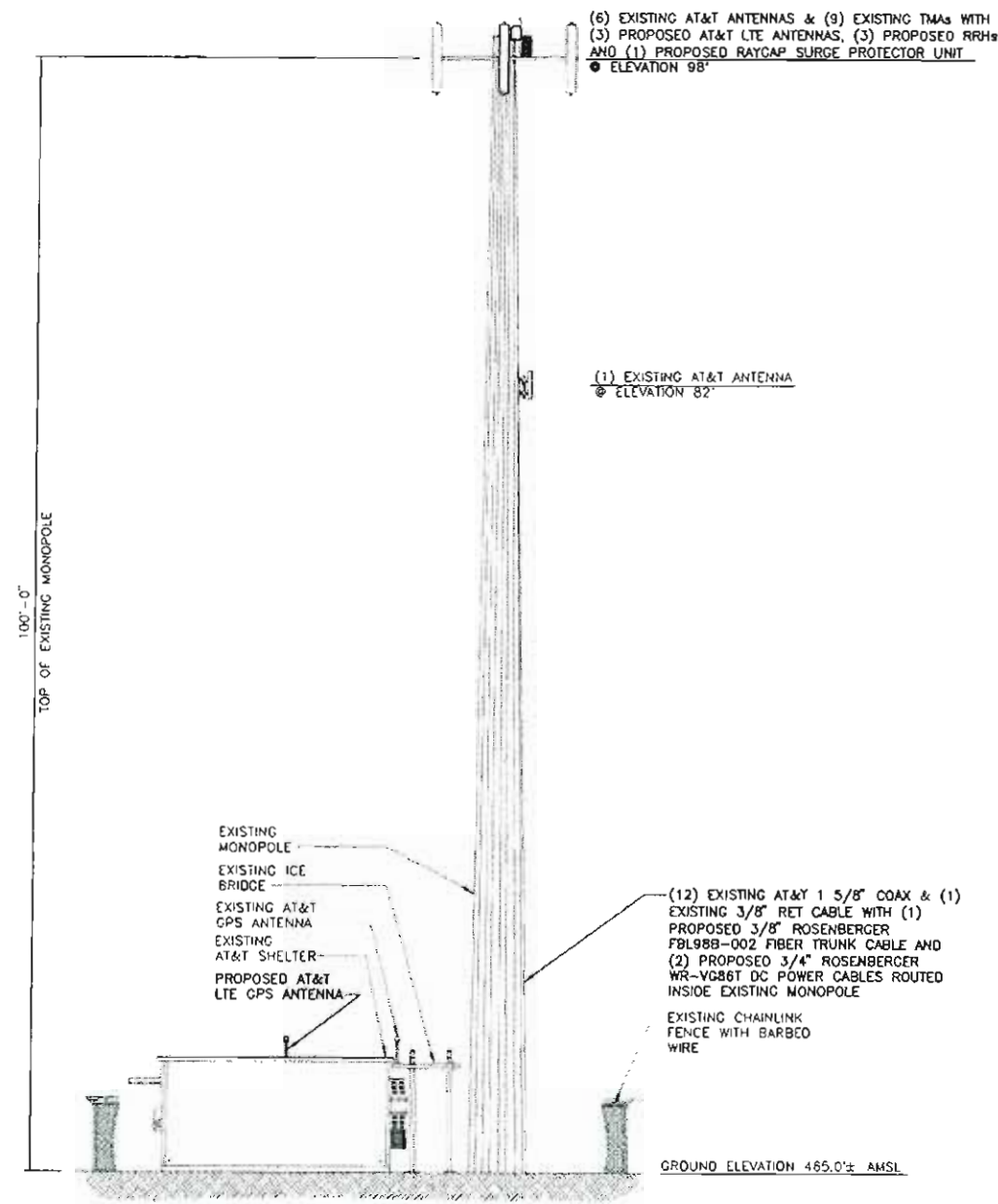
IT IS A VIOLATION OF LAW FOR ANY PERSON,
UNLESS THEY ARE ACTING UNDER THE DIRECTION
OF A LICENSED PROFESSIONAL ENGINEER,
TO ALTER THIS DOCUMENT.

MO3672
FAWCEIT
16643 CHESTERFIELD AIRPORT RD
CHESTERFIELD, MO 63017
AKA 16641 OLD CHESTERFIELD RD
LTE - MONOPOLE

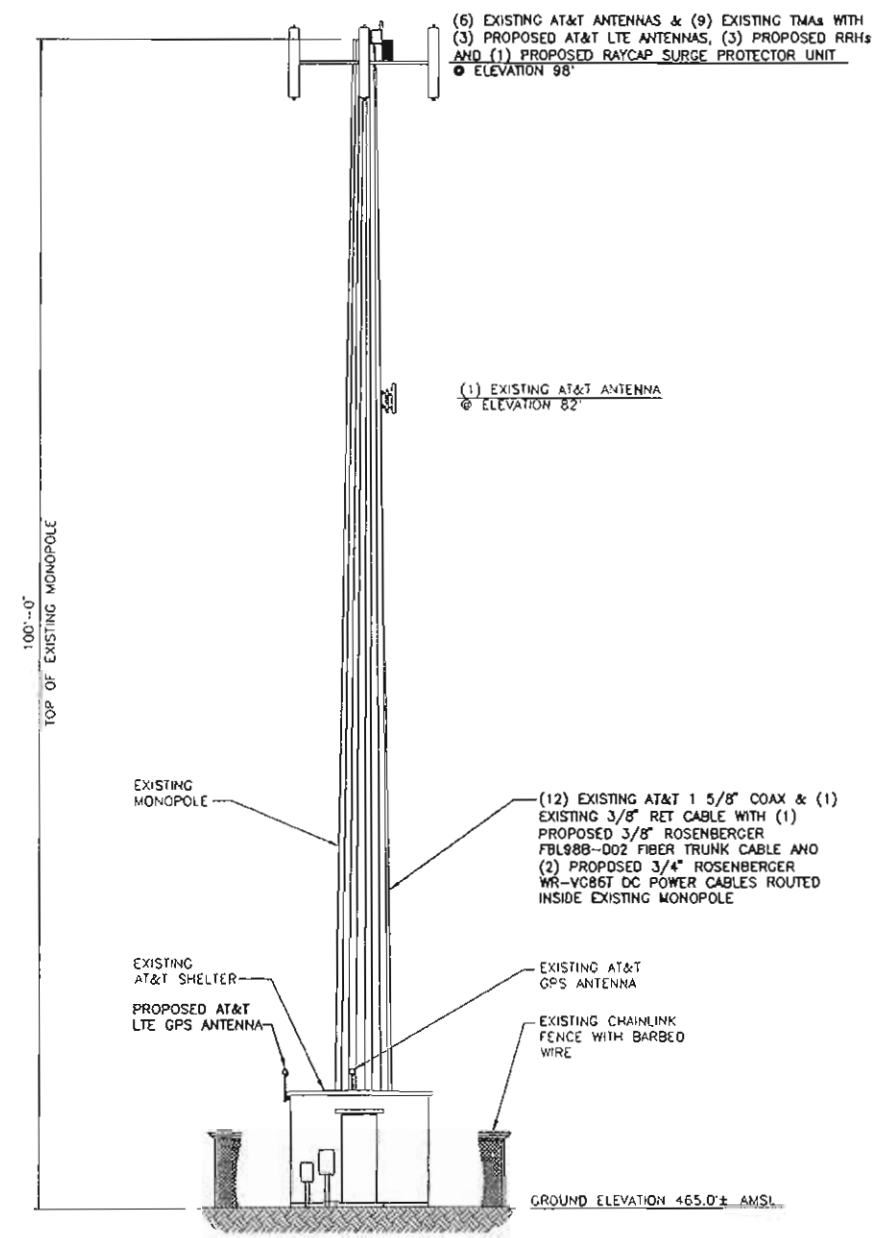
SHEET TITLE
SITE ELEVATIONS

SHEET NUMBER

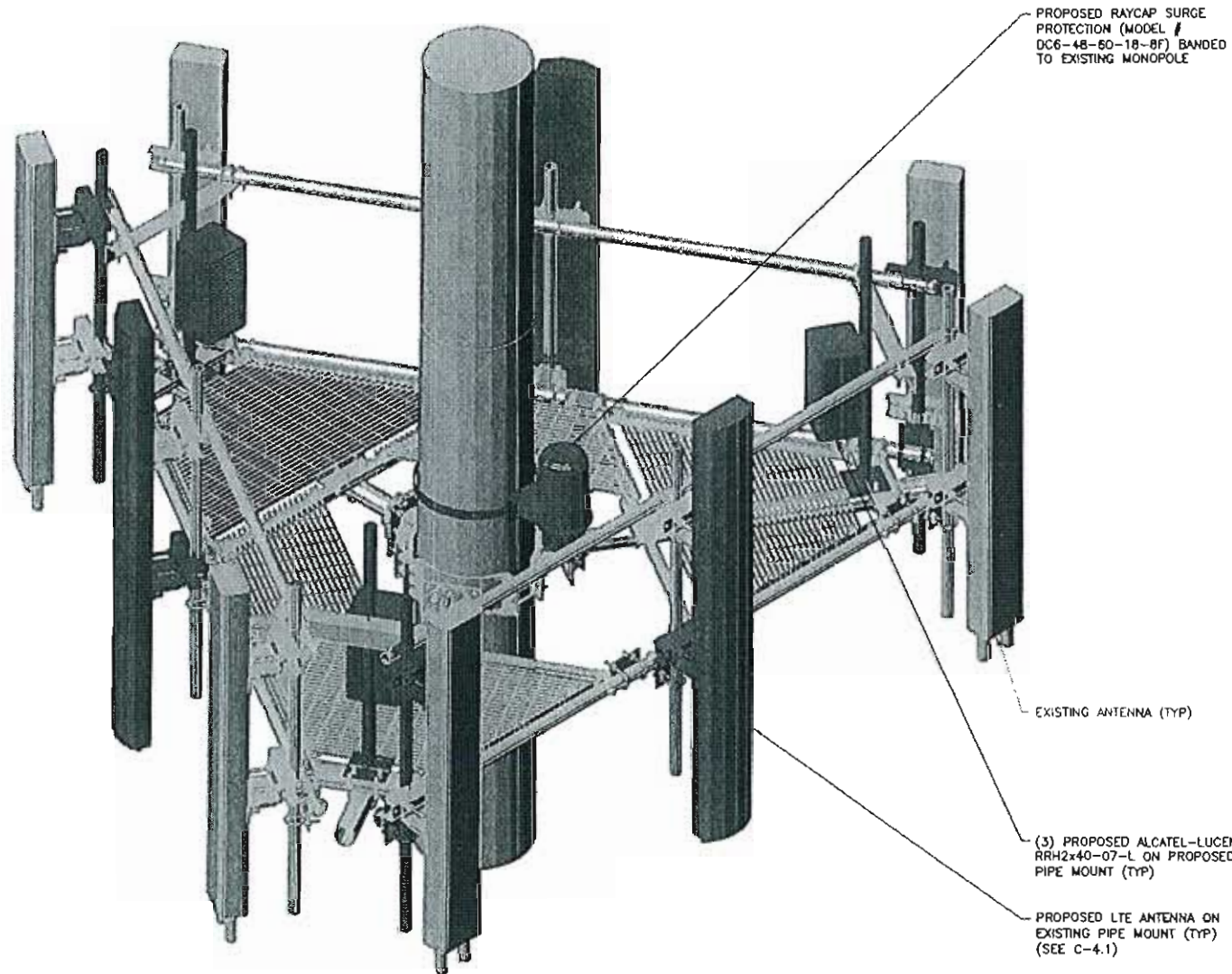
Z-5



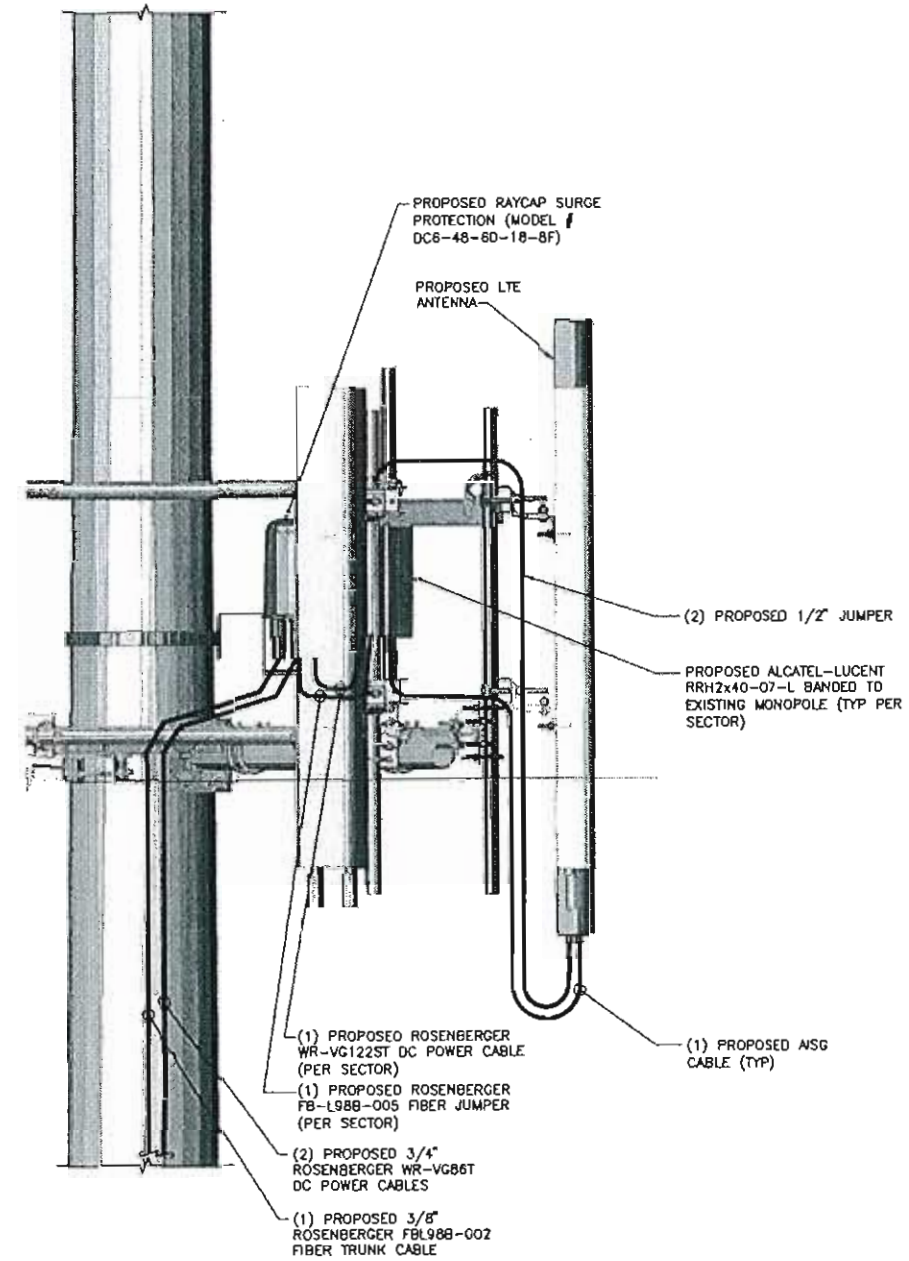
EAST SITE ELEVATION
NO SCALE



NORTH SITE ELEVATION
NO SCALE



TYPICAL PLATFORM MOUNT
NO SCALE



ANTENNA ELEVATION
NO SCALE



13075 MANCHESTER RO, SUITE 100
ST LOUIS, MO 63131



BLACK & VEATCH

10950 GRANOVUE DRIVE
OVERLAND PARK, KANSAS 66210
(913) 458-2000

BLACK & VEATCH PROFESSIONAL ENGINEERING CORPORATION
MISSOURI STATE CERTIFICATE OF AUTHORITY # 001544

PROJECT NO:	168986
DRAWN BY:	MAX
CHECKED BY:	GPX

REV	DATE	DESCRIPTION
1	07/12/11	MISC REVISIONS
0	04/26/11	ISSUED FOR ZONING



DARRYL E. CAIN E-29401
PROFESSIONAL ENGINEER

IT IS A VIOLATION OF LAW FOR ANY PERSON,
UNLESS THEY ARE ACTING UNDER THE DIRECTION
OF A LICENSED PROFESSIONAL ENGINEER,
TO ALTER THIS DOCUMENT.

M03672
FAWCETT
16643 CHESTERFIELD AIRPORT RD
CHESTERFIELD, MO 63017
AKA 16641 OLD CHESTERFIELD RD
LTE - MONOPOLE

SHEET TITLE
ANTENNA/RRH MOUNT
DETAIL

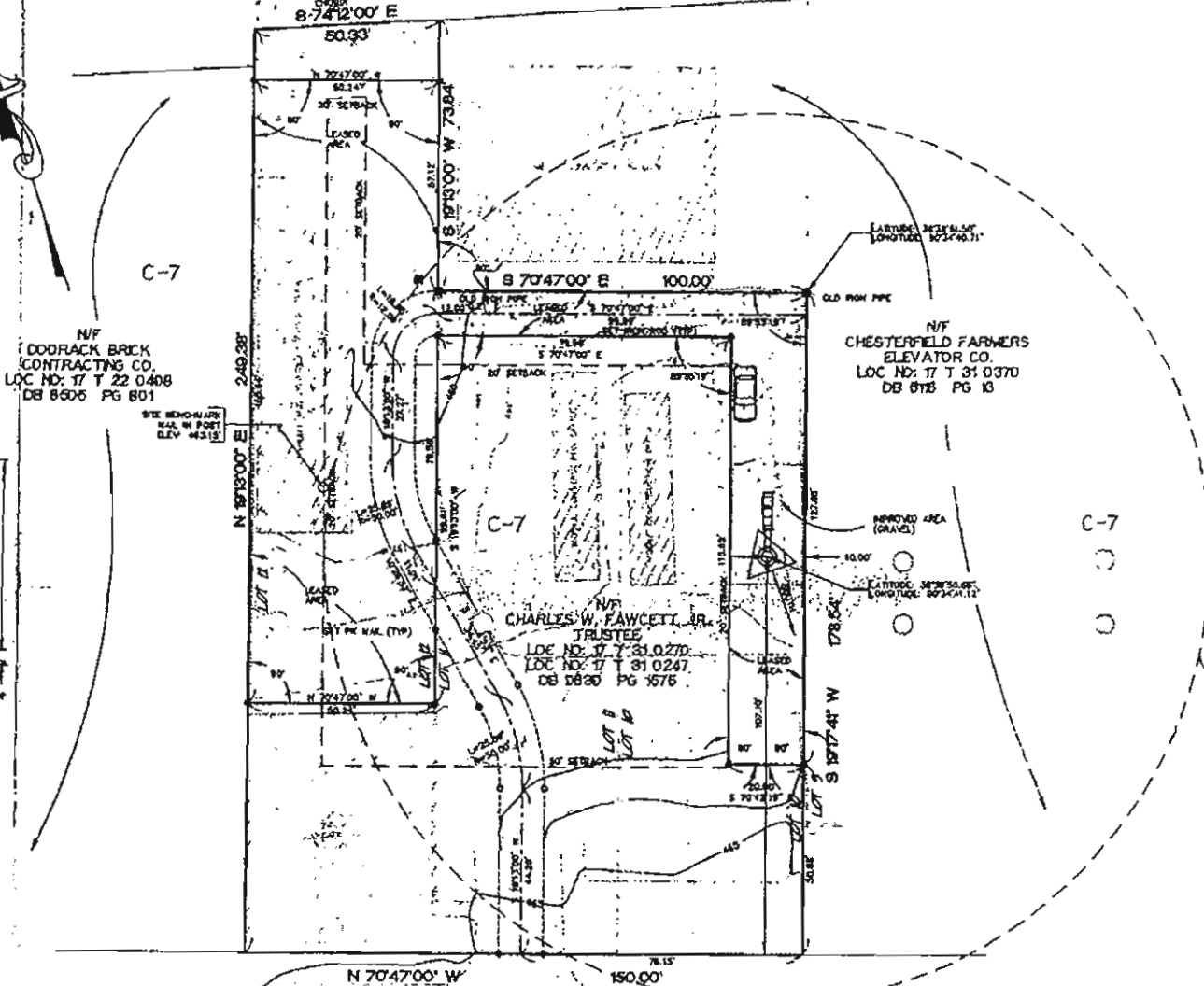
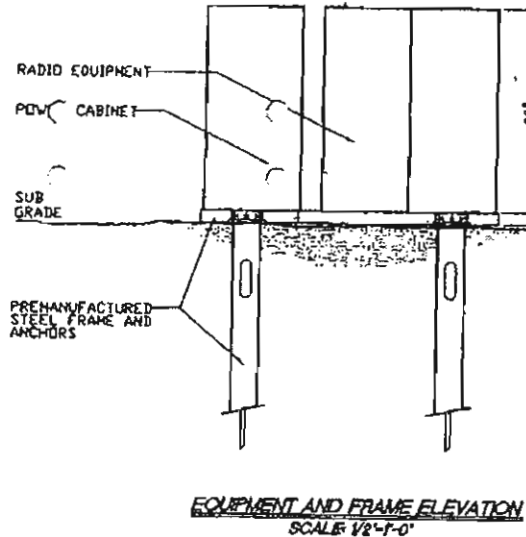
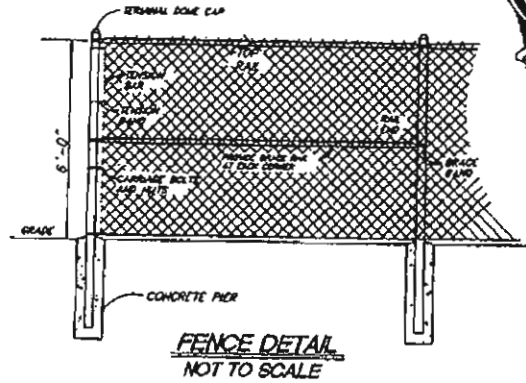
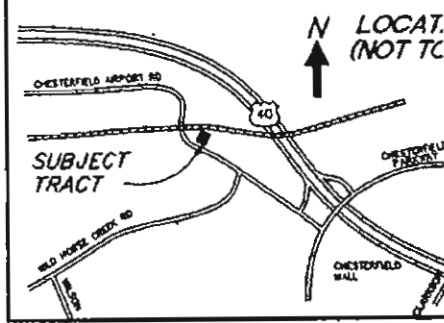
SHEET NUMBER

Z-6



AT&T WIRELESS PCS, INC.

A TRACT OF LAND IN LOTS 10, 11 AND 12 OF "BURKHARDT'S SUBDIVISION" (UNRECORDED)
IN U. S. SURVEY 2031, TOWNSHIP 46 NORTH, RANGE 4 EAST
CITY OF CHESTERFIELD, ST. LOUIS COUNTY, MISSOURI



12 FOOT WIDE ACCESS EASEMENT
A TRACT OF LAND IN LOTS 10 AND 11 OF "BURKHARDT'S SUBDIVISION",
SUBDIVISION IN U. S. SURVEY 2031, TOWNSHIP 46 NORTH, RANGE 4
EAST, CITY OF CHESTERFIELD, ST. LOUIS COUNTY, MISSOURI, AND BEING MORE PARTICULARLY
AS FOLLOWS:
BEGINNING AT AN OLD IRON PIPE AT THE NORTHEASTLY CORNER OF
PARCEL, BEING PART OF THE LAND OF CHARLES W. FAWCETT, JR., TRUSTEE,
AS RECORDED IN DEED BOOK 3638, PAGE 1876, ST. LOUIS COUNTY RECORDS; THE
EASTERLY LINE OF SAID PARCEL, SOUTH 88 DEGREES 17 MINUTES 41 SECONDS
WEST 100 FEET TO AN IRON ROD (1 1/2\"/>

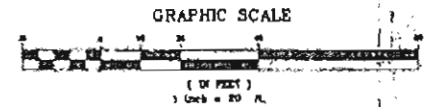
NOISE
ALL DIMENSIONS ARE SHOWN IN FEET AND DECIMAL FRACTIONS THEREOF.
THIS PARCEL IS ZONED "C-7" GENERAL EXTENSIVE COMMERCIAL DISTRICT
SITE IS WITHIN PARCEL NO. 17 I 31 0247 AND 17 I 31 0270
NO CURRENT COMMITMENT FOR THE SURVEILLANCE HAS BEEN SUPPLIED
BY THE COUNTY. SHORTLINES NOT ALL EASEMENTS NOR RESTRICTIONS COME
SHOWN HEREON. THIS SURVEY DOES NOT CONSTITUTE A TITLE SURVEY.
UTILITY LINES SHOWN HEREON ARE BASED UPON AVAILABLE RECORD
UTILITY COMPANIES FIELD LOCATION OF UTILITY UTILITIES AND WORK
OF PLANNING SUPPLIED BY UTILITY COMPANIES. THE LOCATION AND/TO
UTILITY SERVICE LINES TO THE PROPERTY SURVEYED ARE UNKNOWN AND
SHOWN HEREON. CONTACT 1-800-888-8888 BEFORE ANY EXCAVATION.
SITE IS IN ZONE "C" (AREA DETERMINED TO BE OUTSIDE OF 600-FT-
ACCORDING TO FLOOD INSURANCE RATE MAP NO. 22189 C 0140 A DATED
12/01/97) SET IN CONCRETE PILES 24\"/>

NOISE
ALL DIMENSIONS ARE SHOWN IN FEET AND DECIMAL FRACTIONS THEREOF.
THIS PARCEL IS ZONED "C-7" GENERAL EXTENSIVE COMMERCIAL DISTRICT
SITE IS WITHIN PARCEL NO. 17 I 31 0247 AND 17 I 31 0270
NO CURRENT COMMITMENT FOR THE SURVEILLANCE HAS BEEN SUPPLIED
BY THE COUNTY. SHORTLINES NOT ALL EASEMENTS NOR RESTRICTIONS COME
SHOWN HEREON. THIS SURVEY DOES NOT CONSTITUTE A TITLE SURVEY.
UTILITY LINES SHOWN HEREON ARE BASED UPON AVAILABLE RECORD
UTILITY COMPANIES FIELD LOCATION OF UTILITY UTILITIES AND WORK
OF PLANNING SUPPLIED BY UTILITY COMPANIES. THE LOCATION AND/TO
UTILITY SERVICE LINES TO THE PROPERTY SURVEYED ARE UNKNOWN AND
SHOWN HEREON. CONTACT 1-800-888-8888 BEFORE ANY EXCAVATION.
SITE IS IN ZONE "C" (AREA DETERMINED TO BE OUTSIDE OF 600-FT-
ACCORDING TO FLOOD INSURANCE RATE MAP NO. 22189 C 0140 A DATED
12/01/97) SET IN CONCRETE PILES 24\"/>

- GENERAL NOTES:
1. AREA OF TRACT: 12,000 SQUARE FEET
 2. PRESENT ZONING: C-7
 3. PRESENT USE:
 4. PROPOSED USE: TOWER AND SUPPORT EQUIPMENT

PREPARED FOR:
AT&T WIRELESS PCS, INC.
5451 PHANTOM DRIVE
HAZEL WOOD, MO 63042
(314) 551-5200

MAGNETIC DECLINATION
SCALED FROM ASTRONAUTICAL CHART
LINE 1894
ENGINEER'S CERTIFICATION
I, THE UNDERSIGNED, DANIEL DOERING ENGINEERING, INC. HAS
PREPARED A SURVEY FROM WHICH IS BASED ON AVAILABLE
RECORDS AND FIELD MEASUREMENTS AS SHOWN IS TO BE CONSIDERED
TRUE AND CORRECT UNLESS PROVEN OTHERWISE TO CHANGE AS ADDITIONAL
MEASUREMENTS ARE AVAILABLE.
DATE 11/17/97
MARK S. DOERING, LICENSED PROFESSIONAL ENGINEER
STATE OF MISSOURI - #E 35689
STATE OF ILLINOIS - 042-044318



BASES OF BEARINGS, BEARINGS AND DISTANCES ARE IN RELATION TO THE BEARING OF SOUTH 18 DEGREES
17 MINUTES 41 SECONDS WEST ALONG THE EASTERLY LINE OF SUBJECT TRACT, TO
CONVERT TO ASTRONOMIC NORTH, NOTE: ALL BEARINGS CLOCKWISE 80 DEGREES OR
MINUTES 30 SECONDS.
LATITUDE AND LONGITUDE (NAD83) WERE ESTABLISHED USING GPS WITH CODE
CORRECTING RADIO BEACON. PUBLISHED ACCURACY: PLUS OR MINUS 75 CENTIMETERS.
ASTRONOMIC NORTH ESTABLISHED BY SOLAR OBSERVATION.
SOURCE OF RECORD TITLE: LAND OF CHARLES W. FAWCETT, JR., TRUSTEE, AS
RECORDED IN DEED BOOK 3638, PAGE 1876, ST. LOUIS COUNTY RECORDS.
CORNER OF RECORD: OLD IRON PIPE AT THE NORTHEASTLY CORNER OF A 100 FOOT
WIDE PARCEL, BEING THE LAND OF CHARLES W. FAWCETT, JR., TRUSTEE, AS RECORDED
IN DEED BOOK 3638, PAGE 1876, ST. LOUIS COUNTY RECORDS.

REVISIONS	
DATE	COMMENTS
11/4/97	REVISED SITE
11/8/97	REVISED SITE
11/17/97	ADDED ZONING INFORMATION

SITE WW008
16643 CHESTERFIELD AIRPORT
ST. LOUIS TRADE AREA
CITY OF CHESTERFIELD, ST. LOUIS

DOERING ENGINEERING, INC.

3321 S.
SUITE 10
ST. LOUIS
OFFICE
FAX:
CIVIL ENGINEERING * PLANNING *
DATE: 11/3/97 JOB NO. 802008 ICAI
DRAWN: DLR CHK: MAD SHI