



690 Chesterfield Pkwy W • Chesterfield MO 63017-0760
Phone: 636-537-4000 • Fax 636-537-4798 • www.chesterfield.mo.us

September 13, 2007

Architectural Review Board
City of Chesterfield
690 Chesterfield Parkway West
Chesterfield, MO 63017

Re: **Jared's Jewelers (Westfield Shoppingtown Chesterfield):** A Site Development Section Plan, Landscape Plan, Architectural Elevations and Architect's Statement of Design for a free-standing retail building located in a regional shopping center in a "C-8" Planned Commercial District located south of Highway 40/Interstate 64.

Dear Board Members:

Woolpert, Inc. and Cedarwood Architects, Inc., on behalf of Jared's Data Systems, have submitted for your review a Site Development Section Plan, Landscape Plan and Architectural Elevations for the above-referenced project. The Department of Planning has reviewed this request and submits the following report:

Submittal Information.

The request is for the construction of a 6,054 square foot jewelry store at Westfield Shoppingtown Chesterfield. Proposed building materials consist of masonry and E.I.F.S. with a metal parapet joist roof. The refuse collection area is proposed to be of masonry. Please see the attached checklist to review the project's compliance with the City of Chesterfield's Design Guidelines.

Departmental Input

The submittal was reviewed for compliance with the City of Chesterfield's Design Guidelines, St. Louis County Ordinance 10,241 and City of Chesterfield Ordinance 577. Landscape is being addressed through site plan review for adherence to the City of Chesterfield Tree Manual. Lighting is being addressed through site development plan review for adherence to the Lighting Ordinance. Signage is not reviewed at this juncture and will be reviewed via separate submittal to the Department of Planning.

Actions Requested

The Department of Planning requests action by the Architectural Review Board on the information presented.

Respectfully Submitted,

Annissa McCaskill-Clay

Annissa G. McCaskill-Clay, AICP
Assistant Director of Planning

Attachments:

1. ARB Design Review Checklist
2. Architectural Review Application and Packet Submittal.



RECEIVED
SEP 11 2017
PLANNING
DEPARTMENT

ARCHITECTURAL REVIEW BOARD Project Statistics Application

Project Title: Jared's Jewelers

Developer: Westfield Corp. Architect: Cedarwood Arch, Inc Engineer: Woolpert, Inc.

Location: Chesterfield Mall

PROJECT STATISTICS:

Size of site (in acres): N/A Total Square Footage: 6,054 Building Height: 30' - 0"

Proposed Usage: Jewelry Store

Exterior Building Materials: Masonry

Construction Type: Metal and steel frame

Roof Material & Design: Joist and TPL

Screening Material & Design: Masonry at dumpster and parapet walls for mechanical units

Landscape Guidelines: Commercial Institutional Valley Residential

Building Setbacks: N/A Front Side Rear Max Bldg Ht. Min. Lot Req.

Description of art or architecturally significant features (if any): See architectural statement

ADDITIONAL PROJECT INFORMATION:

G/Planning/Procedure Manual (Public)/ARB/Project Statistics App./01-P1 of 1
G/Planning/ARB/Arch. Review Book/Project Statistics App.



CEDARWOOD ARCHITECTURAL, INC.

T. STEPHEN KORLLOS JR.
President

September 07, 2007

Architectural Review Board
690 Chesterfield Parkway West
Chesterfield, MO 63017
636-537-4000

Re: Architectural Statement
Jared The Galleria of Jewelry Chesterfield, MO

To whom it may concern:

The building is approximately 6,054 square feet with 23'-0" tall parapet walls. The gable covered portals are 30'-0" tall and placed at each elevation. The building is scaled for the pedestrian through the sizing of volumes and openings, the use of awnings and by the placement of materials.

The building has been designed to be free standing with equal consideration to each building elevation, including the roof plane. The low sloping roof not in view is a white color to reduce overall building heat gain. The parapet system has been specifically designed to fully screen all roof top unit equipment from pedestrian view.

The overall relationship of this building to its context is to coordinate and enhance the overall aesthetics and not match what has been previously designed.

Material color and placement has been designed to follow the articulation of the building volumes. The color pallet selection is in rich earth tones to compliment the surrounding context.

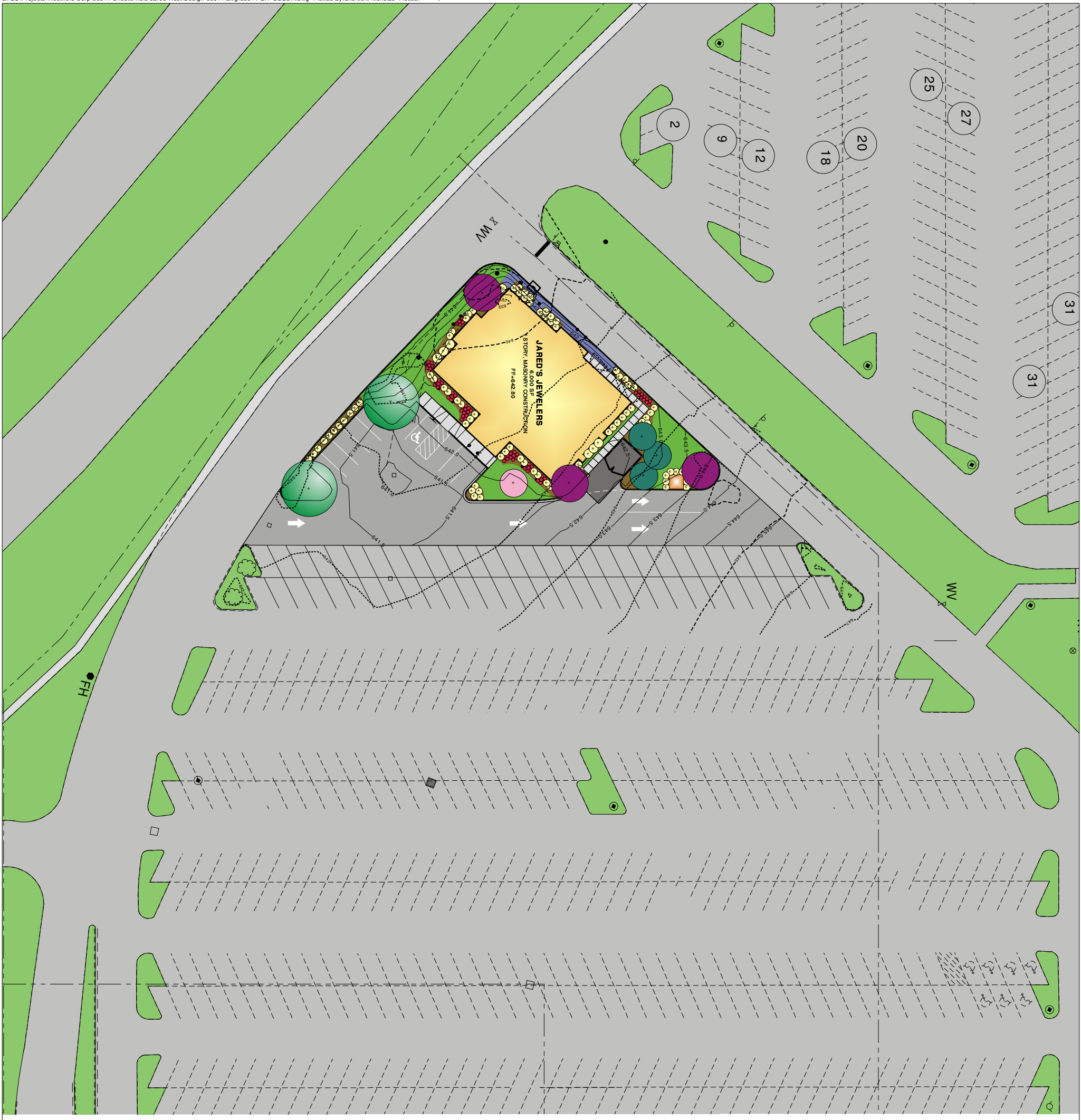
Please contact me at my office (o: 330-869-2265 / f: 330-867-5468) if you have any questions.

Regards,



Robert Marshall, Director of Architecture
Cedarwood Architectural, Inc.

cc: Paul Wolenski, Sterling
David Bruce, Woolpert
Rob Lochner, Westfield
02070018 / 2.1





C WEST (REAR) ELEVATION
 A3 SCALE: 1/4"=1'-0"

EXTERIOR FINISH SCHEDULE	
(A)	4"x4"x16" C.M.U. BRICK, CUSTOM COLOR TO MATCH BENJAMIN MOORE PAINT #2107-40 "DRIFTWOOD". MORTAR BY SOLOMON, COLOR: '565' 45X "MAROON"
(B)	E.I.F.S. COLOR: #40002B "TAUPE MIST" WITH SAND FINISH
(C)	PAINT BY SHERWIN WILLIAMS #6107 "NOMADIC DESERT" EXTERIOR SEMI-GLOSS. APPLY PRIMER APPROVED BY SHERWIN WILLIAMS.
(D)	E.I.F.S. COLOR: CUSTOM COLOR TO MATCH SHERWIN WILLIAMS PAINT #2124 "DARK CHERRY" WITH SAND FINISH.
(E)	E.I.F.S. COLOR: #40003 "WHITE DOVE" WITH SAND FINISH
(F)	4"x4"x16" C.M.U. BRICK, TOP COURSE TO BE TRIPLE SCORED IN FACTORY 4" O.C. VERT. COLOR: "JARED TAN" MORTAR BY SOLOMON, COLOR: '565' 10X "LITE BUFF".
(G)	STOREFRONT ALUMINUM SYSTEM, COLOR: DARK BRONZE ANODIZED TYPE. REFER TO SPECIFICATIONS BOOK AND SHEET A18 FOR FRAMES AND GLAZING
(H)	METAL PANEL ROOF SYSTEM, COLOR #R21-E90 "PATINA GREEN" OVER ALL FOUR GABLE ROOF AREAS
(K)	FABRIC AWNING BY 'SUNBRELLA', COLOR: #4640 "BLACK CHERRY" WITH GOLD SILK SCREENED LETTERS. SEE SHEET A21 FOR DETAILS.
(L)	METAL COPING SYSTEM OVER BUILDING PERIMETER PARAPET, COLOR: #R70-E84 "BONE WHITE".

NOTES:

1. C.M.U. BY 'AKRON BRICK AND BLOCK'. CONTACT DAVID GALCEI AT 1-800-584-2565.
2. SUBMIT SAMPLES OF EXTERIOR FINISH MATERIALS FOR ARCHITECT'S COLOR / FINISH APPROVAL.
3. E.I.F.S. BY 'ENERGY', 'DRY-VIT', 'TEC', 'STO' OR APPROVED EQUAL. COLORS NOTED ARE FOR 'TEC' 'FUL-O-MITE' PRODUCT.
4. METAL ROOF AND COPING SYSTEMS BY 'UNICLAD' FOR COLOR SELECTION. REFER TO SPECIFICATIONS FOR APPROVED MANUFACTURERS
5. REFER TO SHEET SP1 FOR DUMPSTER ENCLOSURE FINISHES.



D NORTH (RIGHT) ELEVATION
 A3 SCALE: 1/4"=1'-0"

JARED

The Galleria Of Jewelry

Chesterfield, Missouri

Building Elevations



A EAST (FRONT) ELEVATION
A2 SCALE: 1/4"=1'-0"

EXTERIOR FINISH SCHEDULE	
(A)	4"x4"x16" C.M.U. BRICK, CUSTOM COLOR TO MATCH BENJAMIN MOORE PAINT #2107-40 "DRIFTWOOD". MORTAR BY SOLOMON, COLOR: '565' 45X "MAROON"
(B)	E.I.F.S. COLOR: #40002B "TAUPE MIST" WITH SAND FINISH
(C)	PAINT BY SHERWIN WILLIAMS #6107 "NOMADIC DESERT" EXTERIOR SEMI-GLOSS. APPLY PRIMER APPROVED BY SHERWIN WILLIAMS.
(D)	E.I.F.S. COLOR: CUSTOM COLOR TO MATCH SHERWIN WILLIAMS PAINT #2124 "DARK CHERRY" WITH SAND FINISH.
(E)	E.I.F.S. COLOR: #40003 "WHITE DOVE" WITH SAND FINISH
(F)	4"x4"x16" C.M.U. BRICK, TOP COURSE TO BE TRIPLE SCORED IN FACTORY 4" O.C. VERT. COLOR: "JARED TAN" MORTAR BY SOLOMON, COLOR: '565' 10X "LITE BUFF".
(G)	STOREFRONT ALUMINUM SYSTEM, COLOR: DARK BRONZE ANODIZED TYPE. REFER TO SPECIFICATIONS BOOK AND SHEET A18 FOR FRAMES AND GLAZING
(H)	METAL PANEL ROOF SYSTEM, COLOR #R21-E90 "PATINA GREEN" OVER ALL FOUR GABLE ROOF AREAS
(K)	FABRIC AWNING BY "SUNBRELLA", COLOR: #4640 "BLACK CHERRY" WITH GOLD SILK SCREENED LETTERS. SEE SHEET A21 FOR DETAILS.
(L)	METAL COPING SYSTEM OVER BUILDING PERIMETER PARAPET, COLOR: #R70-E84 "BONE WHITE".

NOTES:

1. C.M.U. BY 'AKRON BRICK AND BLOCK'. CONTACT DAVID GALCEI AT 1-800-584-2565.
2. SUBMIT SAMPLES OF EXTERIOR FINISH MATERIALS FOR ARCHITECT'S COLOR / FINISH APPROVAL.
3. E.I.F.S. BY 'SENERGY', 'DRY-VIT', 'TEC', 'STO' OR APPROVED EQUAL. COLORS NOTED ARE FOR 'TEC' 'FUL-O-MITE' PRODUCT.
4. METAL ROOF AND COPING SYSTEMS BY 'UNGLAD' FOR COLOR SELECTION. REFER TO SPECIFICATIONS FOR APPROVED MANUFACTURERS
5. REFER TO SHEET SFI FOR DUMPSTER ENCLOSURE FINISHES.



B SOUTH (LEFT) ELEVATION
A2 SCALE: 1/4"=1'-0"

JARED

The Galleria Of Jewelry

Chesterfield, Missouri

Building Elevations

CITY OF CHESTERFIELD
Design Guidelines: Review Checklist

Project Name: Jared's Jewelers (Westfield Shoppingtown Chesterfield)
Date of Review: September 14, 2007

Guideline Description	Addressed as Written	Addressed with Modification (1)	Comments and Reference (2)
CHAPTER ONE: Site Layout			
A. Physical Features	X		
B. Vegetation	X		Currently addressing landscape via site plan review process.
C. Site Relationships	X		
D. Pedestrian & Vehicular Circulation	X		
E. Pedestrian Orientation	X		
CHAPTER TWO: Building all Structures			
I. All Structures:			
A. General Architectural Guidelines			

Guideline Description	Addressed as Written	Addressed with Modification (1)	Comments and Reference (2)
B. Scale	X		
C. Design	X		
D. Relation to Adjacent Development	X		
E. Material/Colors	X		
II. Residential Structures:			
A. General Residential Architecture	NA		
B. Multiple-Family Architecture	NA		
III. Non-residential Structures:			
A. General			
B. Building Equipment Service			
C. Fast Food Restaurant Guidelines	NA		
D. Auto Service Station Guidelines	NA		
E. Shopping Center Guidelines			
F. Chesterfield Valley Guidelines	NA		

Guideline Description	Addressed as Written	Addressed with Modification (1)	Comments and Reference (2)
CHAPTER THREE: Landscape Design	X		Landscape is currently being addressed through site plan review for adherence to the City of Chesterfield Tree Manual.
CHAPTER FOUR: Miscellaneous			
A. Signage	X		Signage is not being reviewed at this time.
B. Lighting	X		Lighting is currently being addressed through the site plan review for adherence to the Lighting Ordinance.
C. Utilities			
D. Stormwater Drainage			
E. Energy Conservation			
F. Screening (Fences & Walls)			

Notes:

- (1) A check in this column refers to the item being addressed in the submission, but with potential variation from the guidelines that review by the Board is specifically requested.
- (2) *Comments* provide additional information regarding the status of specific design guidelines. *Reference* is to the specific Architectural Review guideline as stated in the booklet entitled *Architectural Review Process*, Amended May 2001.