



III.A.

690 Chesterfield Pkwy W • Chesterfield MO 63017-0760
Phone: 636-537-4000 • Fax 636-537-4798 • www.chesterfield.mo.us

Architectural Review Board Staff Report

Project Type: Amended Architectural Elevations & Amended Architect's Statement of Design

Meeting Date: August 14, 2014

From: Jessica Henry
Project Planner

Location: 101 Chesterfield Valley drive

Applicant: Barker Nestor Architecture and Design, on behalf of The Lipton Group

Description: **Burgundy Arrow (Bar Louie)**: Amended Architectural Elevations and Amended Architect's Statement of Design for a 6.07 acre tract of land zoned "PI" Planned Industrial District located on the southwest quadrant of the intersection of Chesterfield Airport Road and Public Works Drive.

PROPOSAL SUMMARY

The request is for amended Architectural Elevations and an amended Architect's Statement of Design for an existing 15,127 square foot building located on the northern portion of the 6.07 acre Burgundy Arrow development. The purpose for the project is to renovate approximately 6,364 square feet at the north end of the building to allow a new restaurant tenant—Bar Louie—to occupy the space that formerly housed Tee's Golf Grill. The subject site is zoned "PI" Planned Industrial District and is governed under the terms and conditions of City of Chesterfield Ordinance 2059. The proposed exterior building modifications primarily consist of the addition of new aluminum and glass overhead doors leading to a new patio area to be partially covered with a fabric awning. Additionally, the applicant is proposing the installation of a new entrance fabric awning and complimentary decorative wall sconces and patio string accent lights as well as minor changes to the EIFS façade materials. These proposed changes are limited to the north and east building elevations.

HISTORY OF SUBJECT SITE

The Burgundy Arrow development was created by City of Chesterfield Ordinance number 1745 in May of 2001. In January of 2004, Ordinance 1745 was repealed and replaced with Ordinance 2059 which increased the maximum permitted square footage and reduced the required setbacks. A Site Development Plan, Landscape Plan, and Architectural Elevations were approved by the Planning Commission in May of 2004. Subsequently, a Sign Package was approved by the Planning Commission in 2005 and Amended Architectural Elevations were administratively approved for Tee's Golf Grill in 2010.



STAFF ANALYSIS

General Requirements for Site Design:

A. Site Relationships

The subject site is located within the Burgundy Arrow development at the intersection of Chesterfield Airport Road and Public Works Drive. The Burgundy Arrow development consists of two retail buildings—the 15,127 building currently under review and a 39,619 square foot building located on the southern portion of the 6.07 acre tract.

B. Circulation System and Access

The Burgundy Arrow development is currently accessed by two curb cuts along Public Works Drive. No changes are proposed to these accesses.

C. Topography

The existing grade of the property is nearly flat. Minimal changes to the existing topography are planned.

D. Retaining Walls

No retaining walls are proposed on the site.

General Requirements for Building Design:

A. Scale

The proposed modifications to the architectural elevations of the building will not alter the scale of the building.

B. Design

The applicant is proposing to eliminate eight parking spaces in order to expand the existing curb into a covered patio area. Glass and aluminum overhead garage style doors will provide an open transition between indoor and outdoor spaces. The patio perimeter will be delineated by a low landscape wall constructed of alternating brick and stone landscaping block pillars and decorative metal railing. The railing will allow views of the adjacent landscaping. A portion of the patio area and the main entrance will be covered by fabric awnings which will add articulation to the otherwise flat elevations.

C. Materials and Color

The existing building is constructed of brick, stone, EIFS, and glass and aluminum windows. The applicant is proposing modifications to the north and east building elevations only. As detailed above, the two most significant modifications are the addition of black fabric awnings over the main entry and a portion of the proposed patio area and the elimination of EIFS expanses to make way for glass and aluminum overhead garage style doors. As part of Staff's review of the Partial Amended Site Development Plan, this awning will be scaled back to comply with the structure setback as set forth in the site specific ordinance.

D. Landscape Design and Screening

The entire patio perimeter will consist of a 2'4" garden wall that features brick and stone landscaping block pillars. These pillars will be linked by a black metal decorative railing. The alcoves between the pillars will feature landscape beds, which will be visible from the interior of the patio through the railing. The applicant has provided example images of these features in the ARB submittal packet.

E. Signage

Signage is not part of the proposal before Architectural Review Board and will be reviewed by Staff.

F. Lighting

The applicant is proposing three additional light fixtures. The first is a fully shielded decorative LED cylindrical wall sconce with a top cover installed to provide down lighting only. Five of these fixtures will be installed, with all but one falling under an awning or the existing canopy.

The second fixture is a decorative awning light fixture. Although this fixture could be directional, the applicant has stated that the fixture head will be angled in a manner that only casts light downward onto the awnings below.

Finally, the applicant is proposing patio accent LED string lights that will be strung across the patio area in the pattern depicted on the lighting exhibit provided in the packets. This fixture is categorized as accent lighting by the Unified Development Code, which states that *"All accent lighting, including Light-Emitting Diodes (LED), and lighting used for signage shall be subject to the approval of the Department."*

DEPARTMENTAL INPUT

Staff is requesting recommendations from the ARB on the Amended Architectural Elevations and Amended Architect's Statement of Design. Be advised, this project is still going through development review by City Staff and will not receive approval until all outstanding items have been addressed.

MOTION

The following options are provided to the Architectural Review Board for consideration relative to this application:

- 1) "I move to forward Amended Architectural Elevations and Amended Architect's Statement of Design for Burgundy Arrow, Bar Louie, as presented, with a recommendation for approval (or denial) to the Planning and Development Services Director."
- 2) "I move to forward the Amended Architectural Elevations and Amended Architect's Statement of Design for Burgundy Arrow, Bar Louie, to the Planning and Development Services Director with the following recommendations..."

Attachments

1. Architectural Review Packet Submittal

29 July 14

**ARCHITECT DESIGN STATEMENT - FACADE MODIFICATION
BAR LOUIE - 103 CHESTERFIELD VALLEY DR.**

▶ This proposal is associated with facade alterations to a tenant space, previously occupied by a restaurant and bar tenant (Tee's Golf). The tenant space is located within an existing, approximately 15,127 square foot, 1-story building on Chesterfield Valley Drive. The new tenant, Bar Louie, will occupy approximately 6,364 square feet, on the north end of the building. Additionally, a new outdoor patio is being reviewed by the City of Chesterfield.

The scope of modifications to the existing building include altering the facade with materials that either match the existing finishes, or are complimentary to the current materials. These materials include a standard aluminum and glass storefront system in a clear anodized finish and new EIFS (Exterior Insulating Finish System) in a typical "earth-tone" color to match the existing construction. In addition to the new storefront system, new aluminum and glass garage style doors are proposed on the corner of the building. Also included are new fabric awnings and new exterior decorative light fixtures with the intent of enhancing the proposed outdoor seating area for Bar Louie.

Proposed New Building Elements:

- ▶ • EIFS wall construction: The proposed modifications to the existing north and east exterior walls include the addition of new EIFS (Exterior Insulation Finish System; Dryvit or similar) wall covering at (3) new pilaster locations. The color of these would be selected from the manufacturers standard colors to match the adjacent existing EIFS construction to remain. Please refer to the colored exterior elevations enclosed in this packet.
- ▶ • Aluminum & Glass Storefront: The proposed modifications to the existing north and east exterior walls include new aluminum storefront system and clear vision glass. The design intent for the new system is to match the existing, adjacent construction. The finish on the aluminum frame will be 'clear anodized' and glazing will be tempered where required by code. Please refer to the colored exterior elevations enclosed in this packet.
- ▶ • Overhead Garage doors: The proposed modifications include the addition of (2) new aluminum and glass, overhead garage style door. These doors are strategically located at the northeast corner of the building to allow for creating an inviting atmosphere between the interior and outdoor seating area. The color of the aluminum frame for these doors has been designed to match the 'clear anodized' color of the existing window system. Additionally, we have included standard aluminum access doors adjacent to the overhead doors for use by patrons and employees.
- ▶ • Fabric awning: The proposed future outdoor patio has been designed to be partially covered with a black fabric awning supported with an aluminum frame system, and the patio is illuminated with decorative string lights. The aluminum frame color will be metallic gray to be complimentary to the clear anodized aluminum storefront system. Please refer to the colored exterior elevations and sample pictures enclosed in this packet.



Proposed New Decorative Lighting:

- Awning lights: 50 Watt Incandescent & Dimmable. The proposed decorative awning lights are to be wall mounted and installed above the fabric awnings, at approximately +14'-5" above the sidewalk, and project 3'-0" from the building. These fixtures are black in color and produce a warm white, dimmable light that will be focused on the face of the decorative awning. The (2) lamps per fixture are movable, so that the light can be properly directed. Once the final location is determined in the field, the lamp is secured in place to focus the beam of light. The light cast from these fixtures is a conical shape and spreads to an area of approximately 5'-0" in diameter. Additionally, some light is cast onto the facade below the fixture. Please refer to the enclosed sample pictures.
- ▶ • Wall sconce: 14.5 Watt LED & Dimmable. The proposed 18" tall decorative sconces are to be wall mounted within the new EIFS construction, at approximately +7'-0" above the sidewalk, and project 9" from the building. These fixtures will also replace the existing 'lantern style' fixtures located on the existing masonry piers, at the corner of the building. These fixtures are metallic gray in color, and will be installed with a cover on the top to direct all the light to the patio below. The purpose of these lights is to produce a warm white, dimmable, ambient lighting at the outdoor patio area. The light cast from these fixtures is a conical shape projected on the wall surface below as well as some light cast onto the new concrete patio. Please refer to the enclosed sample pictures.
- Patio string lights: 0.6 Watt LED & Dimmable. The proposed globe lights are to be strung from the building to new painted steel posts located within the new outdoor patio space, at approximately +8'-6" above the sidewalk and under the proposed large fabric awning. These globes are made of 'frosted' polycarbonate material to eliminate the concern of breakage, and are spaced at 18" on center along the continuous string. The light base and strings are black in color. These lights are included in our proposed modifications to produce a warm white, dimmable, ambient lighting at the outdoor patio area. The majority of these lights will be located under the new fabric awning. Those located outside this awning will have a minimal effect on the surrounding area and will not produce enough lumens to cast light beyond the limits of the property.

It is our opinion that these proposed facade alterations meet the established design criteria for the Design Standards of the City of Chesterfield, MO. as well as the Lighting Ordinance that has been established for this property.

▶ Sincerely,



Kevin J. Barker
Architect of Record
Barker Nestor, Inc.



Sign Lighters Collection



H-MR16-91/30-1-91/
50W/LV/BCM-1



H-EM-10-91/24-3-91/2-PAR-20-91/
DCC-91/200W/INC-1

Proudly Made
In The USA



H-MR16-119/20-2-119/
2-50W/LV/BCM-1



**HI-LITE MFG.
CO., INC**
13450 Monte Vista Avenue
Chino, California 91710
Telephone: (909) 465-1999
Fax: (909) 465-0907

Job Name: _____
Type: _____
Quantity: _____

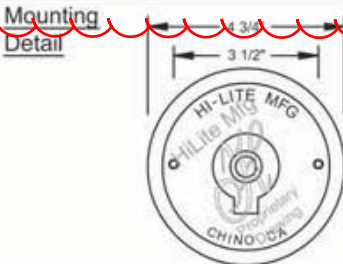
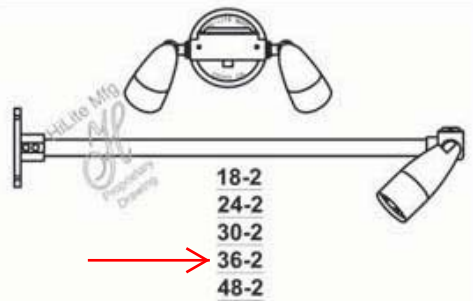
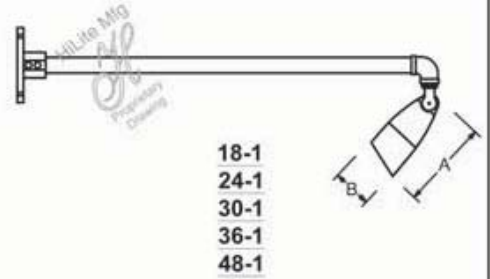
Item Number	Length (A)	Width (B)
H-PAR16	6"	2 1/2"
H-PAR20	6 1/4"	2 3/4"
H-PAR38	9"	5 1/2"
H-MR16	6"	2 1/2"

**For Wall
Mount Only**

Fixture No.	Fixture Color	Arm	Arm Color	Wattage/ Lamp Options	Voltage
H-PAR16	Standard 91 (Black) 93 (White) 95 (Dk. Grn) 96 (Galv.) BR47 (Rust)	18-1 18-2 24-1 24-2 30-1 30-2 36-1 36-2 48-1 48-2	Standard 91 (Black) 93 (White) 95 (Dk. Grn) 96 (Galv.) BR47 (Rust)	Incandescent 50W/INC 75W/INC 150W/INC Low Voltage 50W/LV/BCM	Incandescent 1 (120V) Low Voltage 1 (120V) 2 (277V)
H-PAR20					
H-PAR38					
H-MR16	For all finishes see pages 344-348.		For all finishes see pages 344-348.		

H-PAR16 - 91 / 18-1 - 91 / 50W/INC - 1

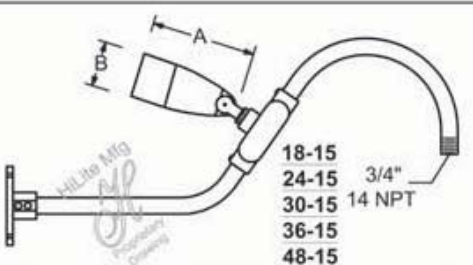
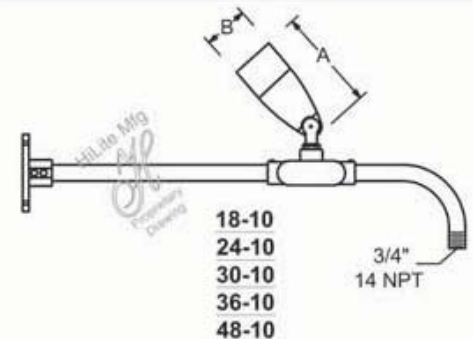
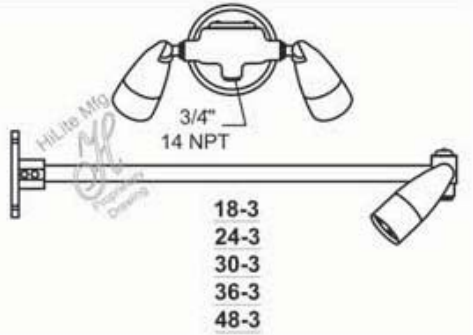
ORDER EXAMPLE
(USE THIS FORMAT TO PLACE ORDER)



Fixture No.	Fixture Color	Arm	Arm Color	PAR No.	PAR Color	Wattage/ Lamp Options	Voltage
Pick any RLM Shade or PAR Head.	Standard 91 (Black) 93 (White) 95 (Dk. Grn) 96 (Galv.) BR47 (Rust)	18-3 24-3 30-3 36-3 48-3 18-10 24-10 30-10 36-10 48-10 18-15 24-15 30-15 36-15 48-15	Standard 91 (Black) 93 (White) 95 (Dk. Grn) 96 (Galv.) BR47 (Rust)	PAR16 PAR20 PAR38 MR16	Standard 91 (Black) 93 (White) 95 (Dk. Grn) 96 (Galv.) BR47 (Rust)	Incandescent 50W/INC 75W/INC 150W/INC Low Voltage 50W/LV/BCM	Incandescent 1 (120V) Low Voltage 1 (120V) 2 (277V)
See cut sheet for specs and accessories.	For all finishes see pages 344-348.		For all finishes see pages 344-348.		For all finishes see pages 344-348.		

H-EM-10 - 91 / 18-3 - 91 / PAR16 - 91 / 50W/INC - 1

ORDER EXAMPLE
(USE THIS FORMAT TO PLACE ORDER)



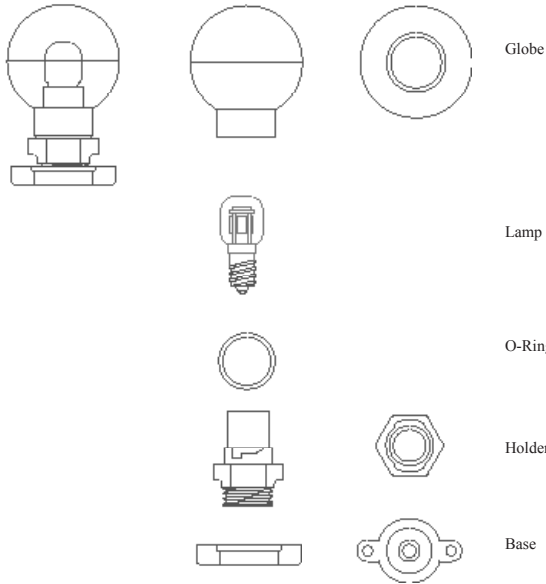
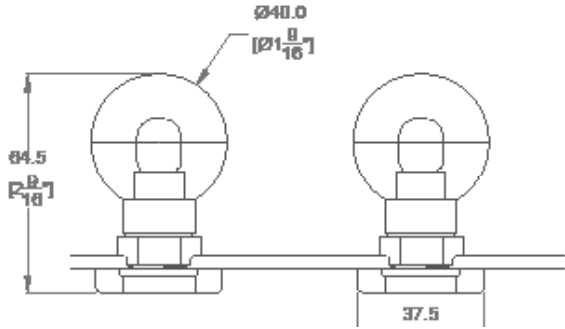
Notes:

LED GLOBE LIGHT

BL-GLB-LED-24V-xx-xx



DIAGRAMS - DIMENSIONS



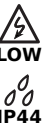
SAMPLE APPLICATION



Solid State Lighting is sensitive to power fluctuations
Surge protection is highly recommended for all LED lighting products and should be on a designated circuit to protect against premature failure
Lack of surge protection may void your warranty

APPLICATION

- Indoors or Outdoors - Wet or dry locations
- Patio & Balcony Lighting
- Alleyway & Perimeter Lighting
- String Lighting
- Festive Lighting



LIGHTING

Lamp	0.6W LED Lamp Frosted
Colour Temperature	
Avg Life	15,000 hr
Lumen Output	43 lm per lamp
Efficacy	70 lm/W
Dimming	PWM & 0-10V dimming control Magnetic DC dimming transformer & magnetic dimmer

ELECTRICAL

Input Voltage*	24VDC
Connections	2x 16 AWG wire - Black PVC Insulated
Power Draw	120W Max 5 Amps
Operating Temp	-20°C to 40°C (-4°F to 104°F)
Circuit	In parallel Each circuit should be fuse protected

*Do not plug directly into 120V

MECHANICAL

Housing Construction	Polycarbonate Globe UV Stabilized Nylon 66 lamp holder
Max Run*	200 Lamps per run
Weatherability	IP44 Splash resistant
Mounting	Staple over wire Tie straps
Lamp Spacing	Customized

*Consult with technician for voltage drop

COMPONENTS

BL-GLB-24V-LED-xx-xx"	Globe Light Assembly (globe, base, lamp, O-ring) Wire is not included - must specify length -xx denotes LED colour -xx" denotes lamp spacing oc
BL-GLB-GLOBE	Polycarbonate globe
BL-GLB-BASE	Globe Light lamp holder with base
BL-GLB-LED-xx	LED Globe light lamp <u>3200K</u> or 6000K
BL-GLB-RING	Silicone O Ring
BL-GLB-WIRE	CSA/UL approved 16AWG wire



INNOVATIVE
LIGHTING

111 - 8838 Heather St. Vancouver BC Canada V6P 3S8
Ph: 1-604-874-4405 • Fx: 1-604-321-0445 • www.bllighting.com • sales@bllighting.com

LAMP SPACING

Lamp Spacing	Bulbs per foot	Watts per foot	Max Length*	Power Draw at Max Length	Amp at Max Length	Number of Bulbs
76 mm (3") oc	4 bulbs per foot	2.4 W/ft	15.2 m (50 ft)	120 W	5 A	200
102mm (4") oc	3 bulbs per foot	1.8 W/ft	18.9 m (62 ft)	112 W	4.65 A	186
152 mm (6") oc	2 bulbs per foot	1.2 W/ft	23 m (76 ft)	92 W	3.8 A	152
229 mm (9") oc	4 bulbs per 3 feet	0.8 W/ft	28.3 m (93 ft)	75 W	3.1 A	124
305 mm (12") oc	1 bulb per foot	0.6 W/ft	32.6 m (107 ft)	65 W	2.675 A	107
457 mm (18") oc	2 bulbs per 3 feet	0.4 W/ft	39.5 m (130 ft)	52 W	2.17 A	86
609.6 mm (24") oc	1 bulb per 2 feet	0.3 W/ft	46.3 m (152 ft)	46 W	1.9 A	76

*Calculated with 10% Voltage Drop Factor

ORDERING

24V LED Globe Light
BL-GLB-LED-24V-XX-XX"

-xx denotes LED colour
-xx" denotes lamp spacing

Components
BL-GLB-WIRE
BL-GLB-GLOBE
BL-GLB-BASE
BL-GLB-RING
BL-GLB-INC
BL-GLB-LED-3200K
BL-GLB-LED-6000K

LED Driver
BL-LT-CV-24V-xx
BL-HPT-CV-24V-xx
BL-GH-CV-24V-xx

DC Transformer
BL-MAG-DC-24V-xx

Enclosure
BL-ENC-HNG-xx
BL-ENC-SCW-xx
BL-ENC-PVC-xx

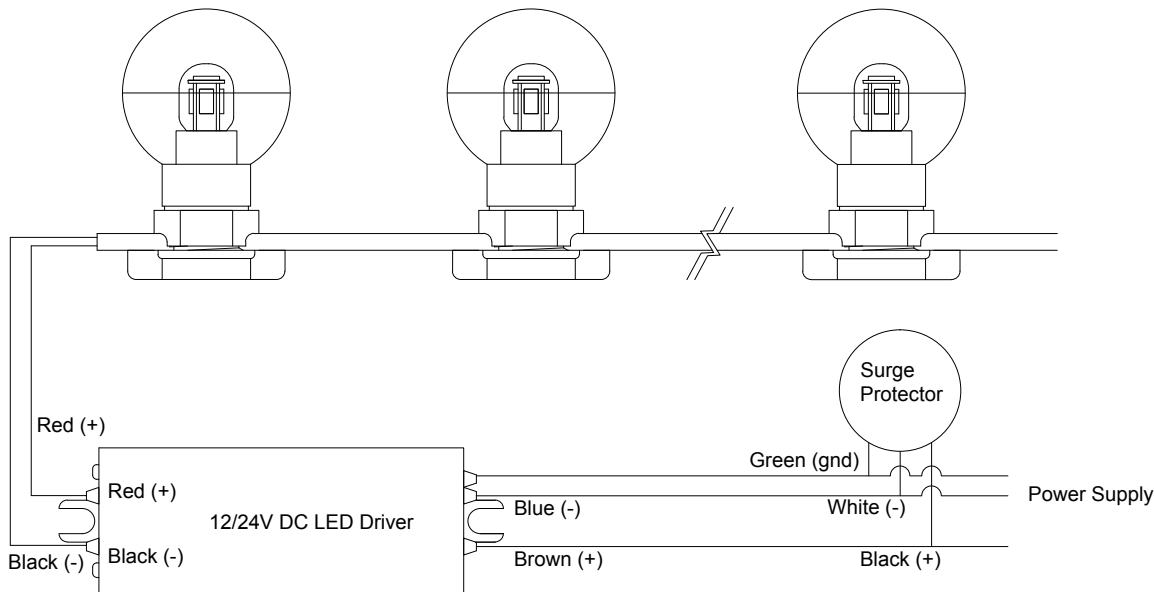
Surge Protector
BL-SP-277-20KA

Dimming Module
BL-PWM-12/24V-1CH

Dimming Switch
BL-DIM-SLIDE
BL-DIM-TOUCH

CONNECTION DIAGRAM

LED Globelight with LED Driver and Surge Protector



LED is polarity sensitive - make sure prongs inside lamp holders orientate in the configuration
Actual wire colours may vary - follow labels on the units
Recommended to add 10% buffer when calculating sizing power supply
LED drivers require enclosures





Current Search Criteria:

Category	All Categories
Finish	All Finishes
Family	All Families
Style	All Styles
Room	All RoomType
Lights	Number of Lights

- ▶ New Products
- ▶ Thomasville Lighting
- ▶ Delta Bath Match
- ▶ Progress LED
- ▶ Energy Star Products

- ▶ Bar Lighting
- ▶ Bathroom Lighting
- ▶ Bedroom Lighting
- ▶ Dining Room Lighting
- ▶ Great Room Lighting
- ▶ Hall & Foyer Lighting
- ▶ Kitchen Lighting
- ▶ Outdoor Lighting
- ▶ Sitting Room Lighting

- ▶ Accessories
- ▶ Bath & Vanity
- ▶ Bath Fans
- ▶ Ceiling Fans
- ▶ Chandeliers
- ▶ Close-to-Ceiling
- ▶ Commercial Outdoor
- ▶ Directionals
- ▶ Exit Signs
- ▶ Flex Track System
- ▶ Hall & Foyer
- ▶ Landscape
- ▶ LED
- ▶ Modular Fluorescent
- ▶ Outdoor
- ▶ Pendants
- ▶ Pendants Mini-Pendants
- ▶ Recessed-Accessory
- ▶ Recessed-Housing
- ▶ Recessed-Trim
- ▶ Sconces
- ▶ Step Lights
- ▶ Track
- ▶ Undercabinet
- ▶ Wall Bracket

[Outdoor](#) > [Cylinder](#) > P5641-82



P5641-82

Category: Outdoor

Room Type: Outdoor Lighting

Finish: Metallic Gray

Style: Contemporary/Modern

Family: Cylinder

Description: 6" cylinder with heavy duty aluminum construction and die cast wall bracket. Powder coated finish. UL listed for wet locations.

MSRP/Retail: \$163.65

Buy Online

Buy Local

1 | ▶



Technical Details

Width/Diameter: 6"
 Height: 12"
 Lamp Quantity: one
 Lamp Type: BR-40 or PAR-38
 Lamp Wattage (Max): 250
 Notes: May also use 250w PAR-38 lamp

Additional Support

- [How to Install](#)
- [Product Specifications](#)

You Might Also Be Interested In :



[Back To Top](#)

Try a new search:



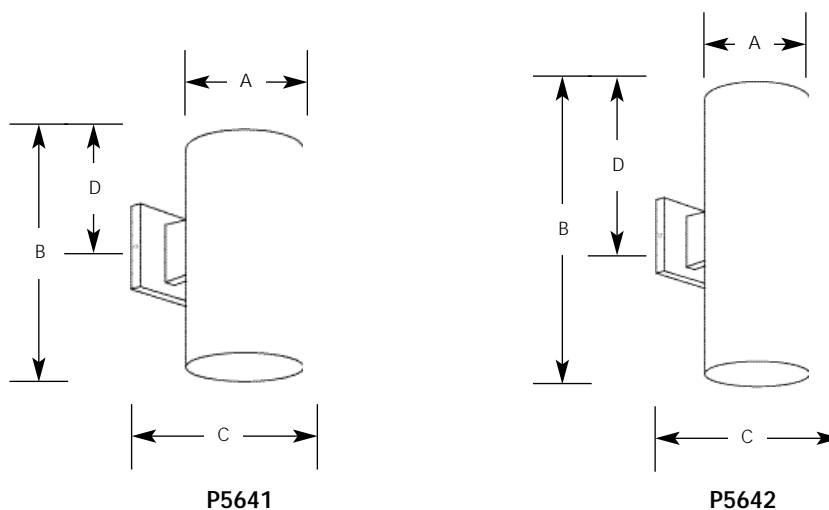
Style [All Categories](#)

Finish [All Finishes](#)

Family [All Families](#)

	Type			
	-20	-30	-31	-82
P5641	<input type="checkbox"/>	<input type="checkbox"/>	<input type="checkbox"/>	<input type="checkbox"/>
P5642	<input type="checkbox"/>	<input type="checkbox"/>	<input type="checkbox"/>	<input type="checkbox"/>

Catalog No.	Finish				Lamping	Dimensions (Inches)			
	Bronze	White	Black	Metallic Gray		A	B	C	D
P5641	-20	-30	-31	-82	1-250w QPAR38, 150w BR40	6	12	8-7/8	4-1/2
P5642	-20	-30	-31	-82	2-250w QPAR38	6	18	8-7/8	8



Specifications:

General

- Extruded aluminum .125 wall thickness one piece cylinder
- Cast aluminum wall bracket
- P5641 - Down lighting
- P5642 - Up/Down lighting. P8798-31 top cover lens recommended when unit is used outdoors
- Interior finish matches exterior finish

Mounting

- Covers any outlet box
- Cast mounting bracket is 4-1/2" square
- Outlet box mounting bracket supplied permitting attachment of unit to wall with one almost invisible set screw

Electrical

- Medium base porcelain socket with nickel plated brass screw shell

Accessories

- P8798-31 Top lens cover for P5642 fixture

Options

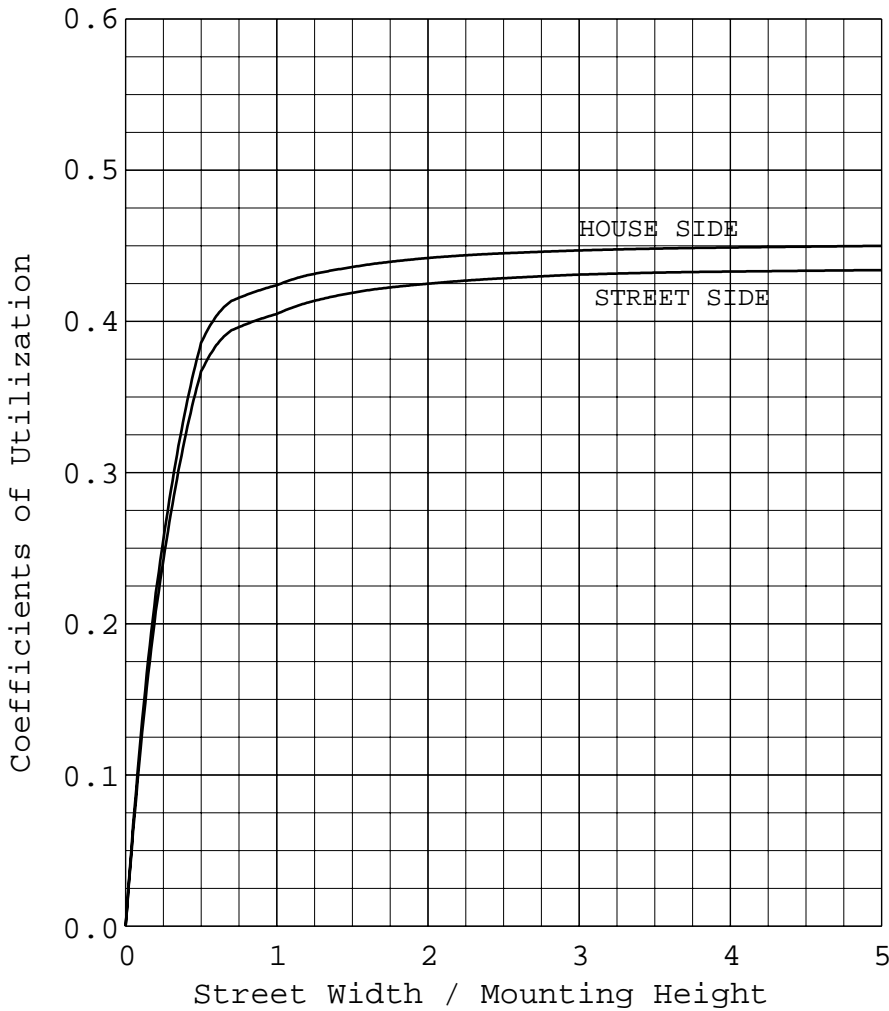
- Bronze finish - specify " 20" suffix
- White finish - specify " 30" suffix
- Black finish - specify " 31" suffix
- Metallic Gray finish - specify " 82" suffix

Labeling

- UL-CUL wet location listed (5642 only with top cover lens)

COEFFICIENTS OF UTILIZATION AND FLUX DISTRIBUTION

REPORT NUMBER: 853
 DATE: 08/03/05
 PREPARED FOR: Progress Lighting
 CATALOG NUMBER: P5674-30
 LUMINAIRE: 5" CYLINDER
 LAMP: 1-75PAR30/FL/H-GE-GE
 Outdoor Test
 MOUNTING: VERTICAL
 REPORT BASED ON 1030 LUMENS PER LAMP.



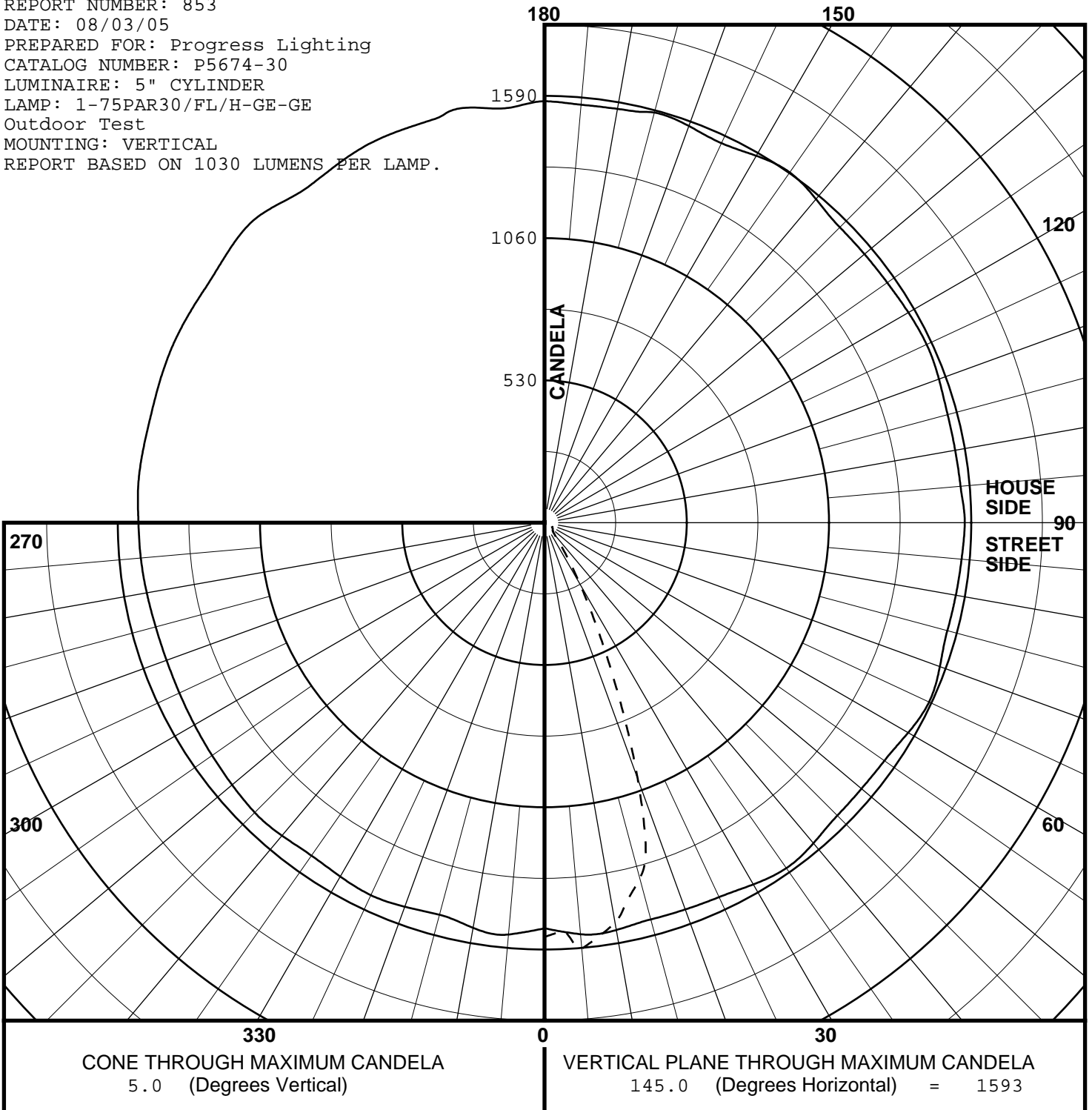
	LUMENS	PERCENT OF LAMP
DOWNWARD STREET SIDE	456	44.27
DOWNWARD HOUSE SIDE	467	45.34
DOWNWARD TOTAL	923	89.61
UPWARD STREET SIDE	0	0.00
UPWARD HOUSE SIDE	0	0.00
UPWARD TOTAL	0	0.00
TOTAL FLUX	923	89.61

Checked
Approved

ALL CANDELA, LUMENS AND COEFFICIENT OF UTILIZATION VALUES IN THIS REPORT
 ARE BASED ON RELATIVE PHOTOMETRY WHICH ASSUMES A BALLAST FACTOR OF 1.00.
 ANY CALCULATIONS PREPARED FROM THESE DATA SHOULD INCLUDE AN APPROPRIATE
 BALLAST FACTOR.

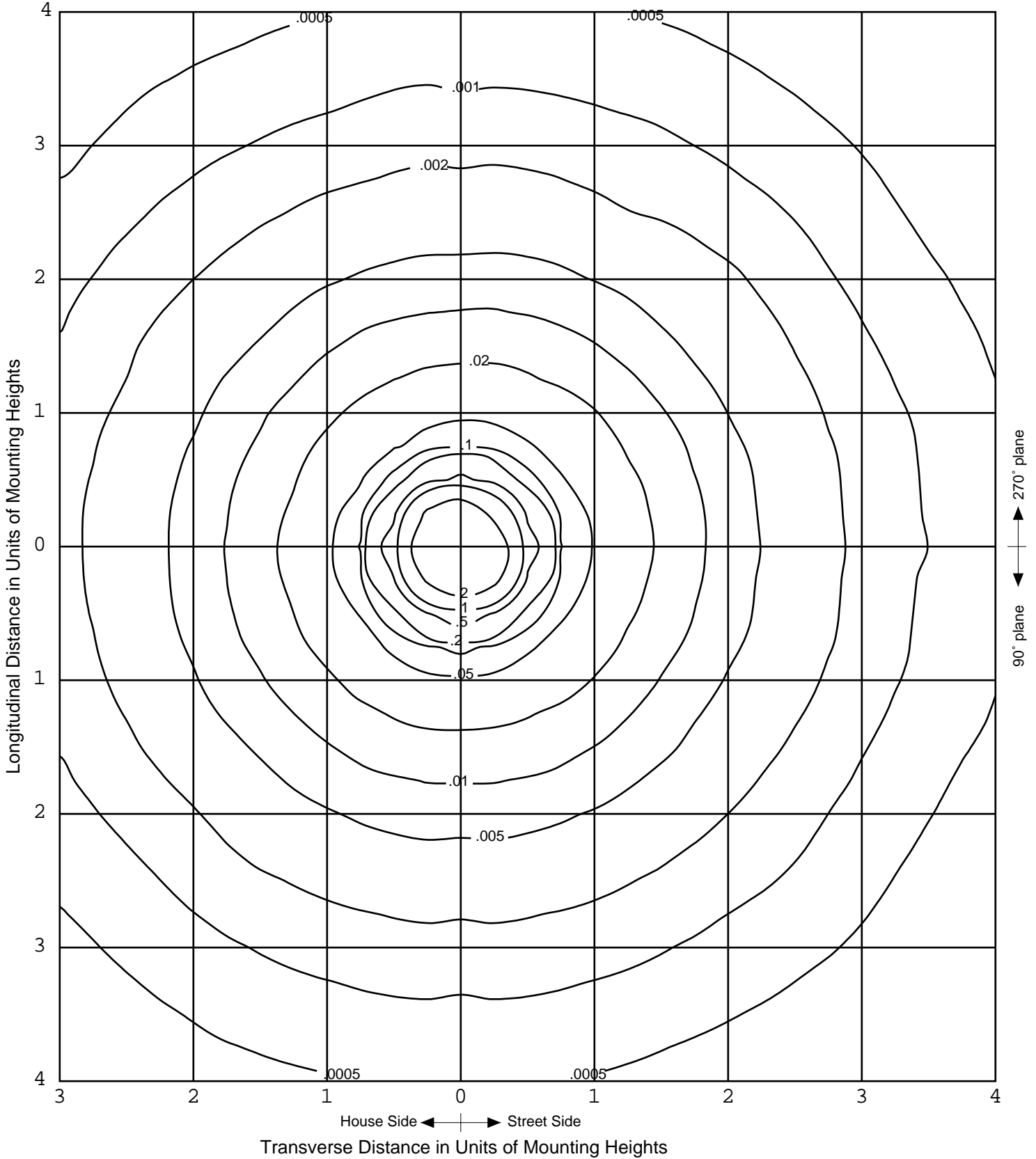
MAXIMUM PLANE AND MAXIMUM CONE PLOTS OF CANDELA

REPORT NUMBER: 853
 DATE: 08/03/05
 PREPARED FOR: Progress Lighting
 CATALOG NUMBER: P5674-30
 LUMINAIRE: 5" CYLINDER
 LAMP: 1-75PAR30/FL/H-GE-GE
 Outdoor Test
 MOUNTING: VERTICAL
 REPORT BASED ON 1030 LUMENS PER LAMP.



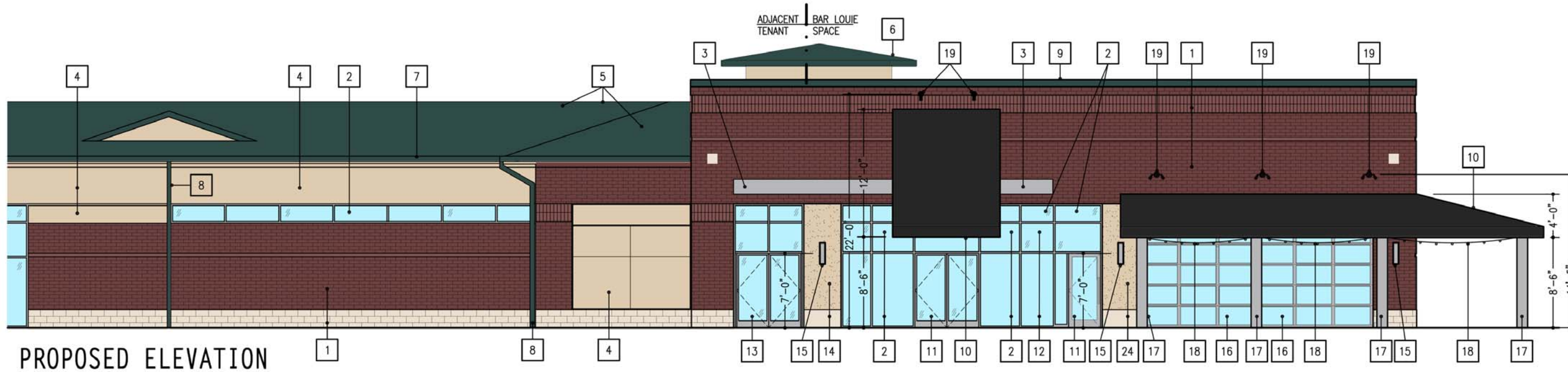
ISOFOOTCANDLE LINES OF HORIZONTAL ILLUMINATION

Values based on 20 foot mounting height.



EXTERIOR ELEVATIONS KEYNOTES

- | | | | | |
|---|--|--|--|---|
| 1 EXISTING BRICK & STONE | 6 EXISTING SLOPED ROOF
DECORATIVE TOWER BEYOND | 11 NEW STOREFRONT DOORS OF BAR LOUIE | 16 REMOVE EXISTING E.I.F.S. WALL SYSTEM TO
ACCOMMODATE NEW ALUM./ GLASS O.H. DOOR | 21 EXISTING METAL CANOPY BEYOND -SEE A101 |
| 2 EXISTING ALUMINUM/GLASS STOREFRONT
OR CLERESTORY WINDOW SYSTEM | 7 EXISTING GUTTER | 12 NEW STOREFRONT TO MATCH EXISTING | 17 METAL AWNING SUPPORT | 22 EXISTING SERVICE DOOR |
| 3 EXISTING METAL CANOPY
ABOVE WINDOW OPENING | 8 EXISTING DOWNSPOUT | 13 NEW STOREFRONT DOORS OF
ADJACENT TENANT | 18 DECORATIVE STRING LIGHTS | 23 EXISTING ELECTRICAL SERVICE |
| 4 EXISTING E.I.F.S. WALL COVERING | 9 EXISTING METAL COPING | 14 NEW NEUTRAL PIER W/ EIFS | 19 DECORATIVE EXTERIOR WATER PROOF
AWNING LIGHT FIXTURE (TYP.) | 24 MODIFY EXISTING E.I.F.S. WALL SYSTEM TO
ACCOMMODATE NEW OPENINGS. INFILL ABOVE AS
REQUIRED |
| 5 EXISTING SLOPED ROOF | 10 FABRIC AWNING (TYP.) -
DESIGN/PERMIT/BUILD BY OTHERS | 15 DECORATIVE EXTERIOR WATER PROOF WALL
SCONCE LIGHT FIXTURE (TYP.) | 20 FABRIC AWNING BEYOND -SEE A101 | |



PROPOSED ELEVATION



EXISTING ELEVATION

A101 EAST EXTERIOR ELEVATION
 SCALE: 3/32"=1'-0"
 0 2 4 6

PROJECT NUMBER:	N1414H CHESTERFIELD, MO
DRAWING NAME:	BLCMO
ISSUE DATE:	28 JULY 14
DRAWN BY:	SW

+ baker/nestor +
 ARCHITECTURE + DESIGN
 600 WEST CERMAK RD. CHICAGO, IL 60616 USA TEL: 847-763+1692 FAX: 847-763+1697

PROPOSED ARCHITECTURAL SKETCH FOR:
Bar Louie
 103 CHESTERFIELD VALLEY DR.
 CHESTERFIELD, MO 63005

SHEET NUMBER:
A1 OF 3

EXTERIOR ELEVATIONS KEYNOTES

- | | | | | |
|---|--|--|--|---|
| 1 EXISTING BRICK & STONE | 6 EXISTING SLOPED ROOF
DECORATIVE TOWER BEYOND | 11 NEW STOREFRONT DOORS OF BAR LOUIE | 16 REMOVE EXISTING E.I.F.S. WALL SYSTEM TO
ACCOMMODATE NEW ALUM./ GLASS O.H. DOOR | 21 EXISTING METAL CANOPY BEYOND -SEE A101 |
| 2 EXISTING ALUMINUM/GLASS STOREFRONT
OR CLERESTORY WINDOW SYSTEM | 7 EXISTING GUTTER | 12 NEW STOREFRONT TO MATCH EXISTING | 17 METAL AWNING SUPPORT | 22 EXISTING SERVICE DOOR |
| 3 EXISTING METAL CANOPY
ABOVE WINDOW OPENING | 8 EXISTING DOWNSPOUT | 13 NEW STOREFRONT DOORS OF
ADJACENT TENANT | 18 DECORATIVE STRING LIGHTS | 23 EXISTING ELECTRICAL SERVICE |
| 4 EXISTING E.I.F.S. WALL COVERING | 9 EXISTING METAL COPING | 14 NEW NEUTRAL PIER W/ EIFS | 19 DECORATIVE EXTERIOR WATER PROOF
AWNING LIGHT FIXTURE (TYP.) | 24 MODIFY EXISTING E.I.F.S. WALL SYSTEM TO
ACCOMMODATE NEW OPENINGS. INFILL ABOVE AS
REQUIRED |
| 5 EXISTING SLOPED ROOF | 10 FABRIC AWNING (TYP.) -
DESIGN/PERMIT/BUILD BY OTHERS | 15 DECORATIVE EXTERIOR WATER PROOF WALL
SCONCE LIGHT FIXTURE (TYP.) | 20 FABRIC AWNING BEYOND -SEE A101 | |



A201 NORTH EXTERIOR ELEVATION
 SCALE: 3/32"=1'-0"



PROJECT NUMBER: N1414H CHESTERFIELD, MO
 DRAWING NAME: BLCMO
 ISSUE DATE: 28 JULY 14
 DRAWN BY: SW

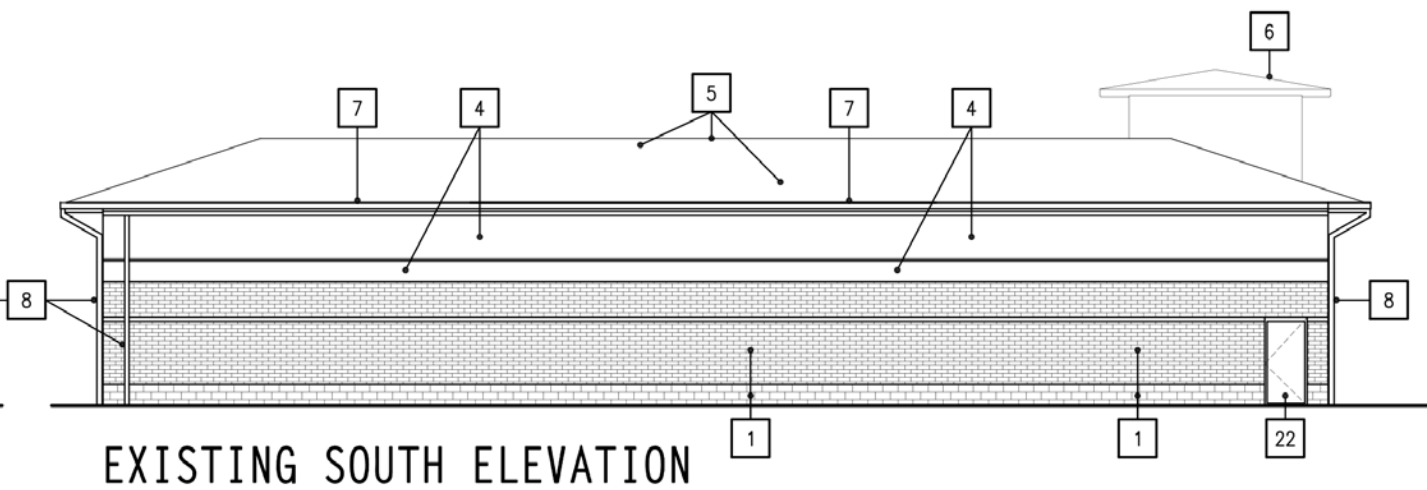
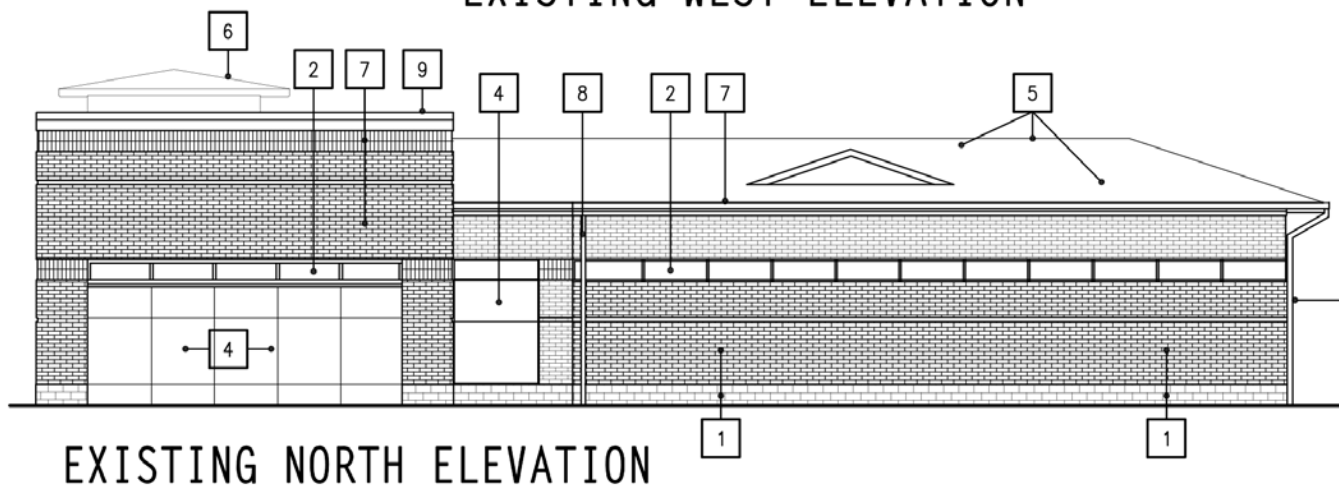
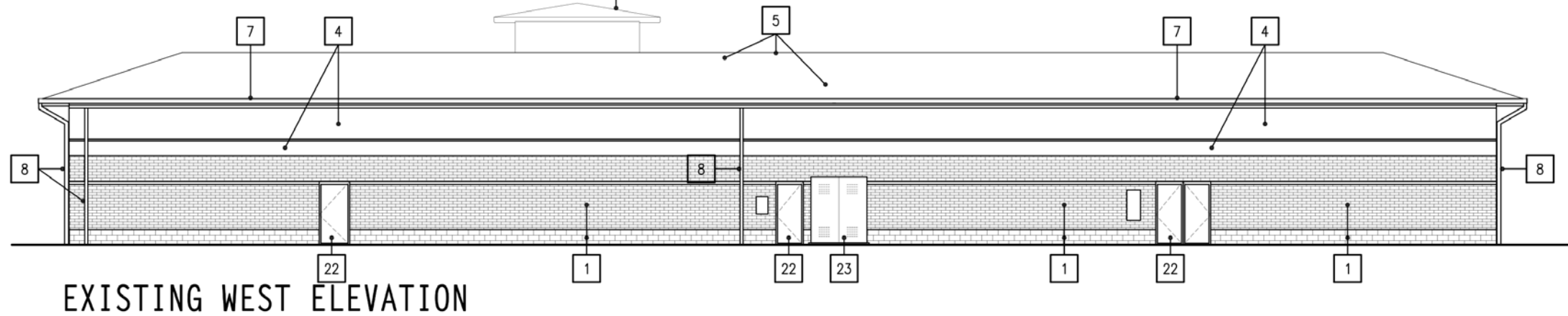
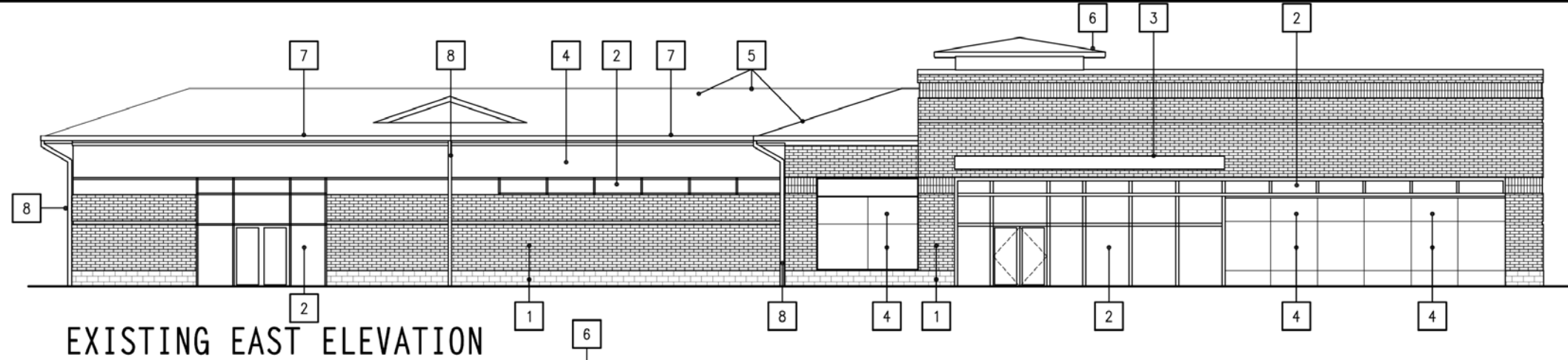
+ barker/nestor +
 ARCHITECTURE + DESIGN
 CHICAGO, IL 60616 USA TEL: 847-763+1692
 600 WEST CERMAK RD. FAX: 847-763+1697

PROPOSED ARCHITECTURAL SKETCH FOR:
Bar Louie
 103 CHESTERFIELD VALLEY DR.
 CHESTERFIELD, MO 63005

SHEET NUMBER:
A2 OF 3

EXTERIOR ELEVATIONS KEYNOTES

- | | | | | |
|---|--|--|--|---|
| 1 EXISTING BRICK & STONE | 6 EXISTING SLOPED ROOF
DECORATIVE TOWER BEYOND | 11 NEW STOREFRONT DOORS OF BAR LOUIE | 16 REMOVE EXISTING E.I.F.S. WALL SYSTEM TO
ACCOMMODATE NEW ALUM./ GLASS O.H. DOOR | 21 EXISTING METAL CANOPY BEYOND -SEE A101 |
| 2 EXISTING ALUMINUM/GLASS STOREFRONT
OR CLERESTORY WINDOW SYSTEM | 7 EXISTING GUTTER | 12 NEW STOREFRONT TO MATCH EXISTING | 17 METAL AWNING SUPPORT | 22 EXISTING SERVICE DOOR |
| 3 EXISTING METAL CANOPY
ABOVE WINDOW OPENING | 8 EXISTING DOWNSPOUT | 13 NEW STOREFRONT DOORS OF
ADJACENT TENANT | 18 DECORATIVE STRING LIGHTS | 23 EXISTING ELECTRICAL SERVICE |
| 4 EXISTING E.I.F.S. WALL COVERING | 9 EXISTING METAL COPING | 14 NEW NEUTRAL PIER W/ EIFS | 19 DECORATIVE EXTERIOR WATER PROOF
AWNING LIGHT FIXTURE (TYP.) | 24 MODIFY EXISTING E.I.F.S. WALL SYSTEM TO
ACCOMMODATE NEW OPENINGS. INFILL ABOVE AS
REQUIRED |
| 5 EXISTING SLOPED ROOF | 10 FABRIC AWNING (TYP.) -
DESIGN/PERMIT/BUILD BY OTHERS | 15 DECORATIVE EXTERIOR WATER PROOF WALL
SCONCE LIGHT FIXTURE (TYP.) | 20 FABRIC AWNING BEYOND -SEE A101 | |



A301 EXIST. EXTERIOR ELEVATIONS
SCALE: 1/16"=1'-0"



PROJECT NUMBER: N1414H CHESTERFIELD, MO
DRAWING NAME: BLCMO
ISSUE DATE: 28 JULY 14
DRAWN BY: SW

+ barker/nestor
ARCHITECTURE + DESIGN
600 WEST CERMAK RD. CHICAGO, IL 60616 USA TEL: 847-763+1692
FAX: 847-763+1697

PROPOSED ARCHITECTURAL SKETCH FOR:
Bar Louie
103 CHESTERFIELD VALLEY DR.
CHESTERFIELD, MO 63005

SHEET NUMBER:
A3 OF 3

PROJECT NUMBER:	NT1414H CHESTERFIELD, MO
DRAWING NAME:	BLCMO
ISSUE DATE:	28 JULY 14
DRAWN BY:	SW

SITE NOTES:

1. ADA PARKING SPACES AND ACCESSIBLE AISLES SHALL HAVE A MAXIMUM SLOPE OF LESS THAN 2.0% IN ALL DIRECTIONS.
2. RAMPS SHALL HAVE A MAXIMUM RUNNING SLOPE OF LESS THAN 8.3% AND A MAXIMUM CROSS SLOPE OF LESS THAN 2.0%.
3. ACCESSIBLE HANDRAILS SHALL BE USED ON RAMPS THAT RISE MORE THAN 6".
4. LANDINGS AND DOOR MANEUVERING AREAS SHALL BE 5'x5' MINIMUM AND HAVE A MAXIMUM SLOPE OF LESS THAN 2.0% IN ALL DIRECTIONS.
5. CROSSWALK STRIPING SHALL HAVE A MAXIMUM RUNNING SLOPE OF LESS THAN 5.0% AND A MAXIMUM CROSS SLOPE OF LESS THAN 2.0%.
6. SIDEWALKS SHALL HAVE A MAXIMUM RUNNING SLOPE OF LESS THAN 5.0% AND A MAXIMUM CROSS SLOPE OF LESS THAN 2.0%.
7. DETECTABLE WARNINGS SHALL BE USED AS REQUIRED BY LOCAL AND/ OR STATE CODES.

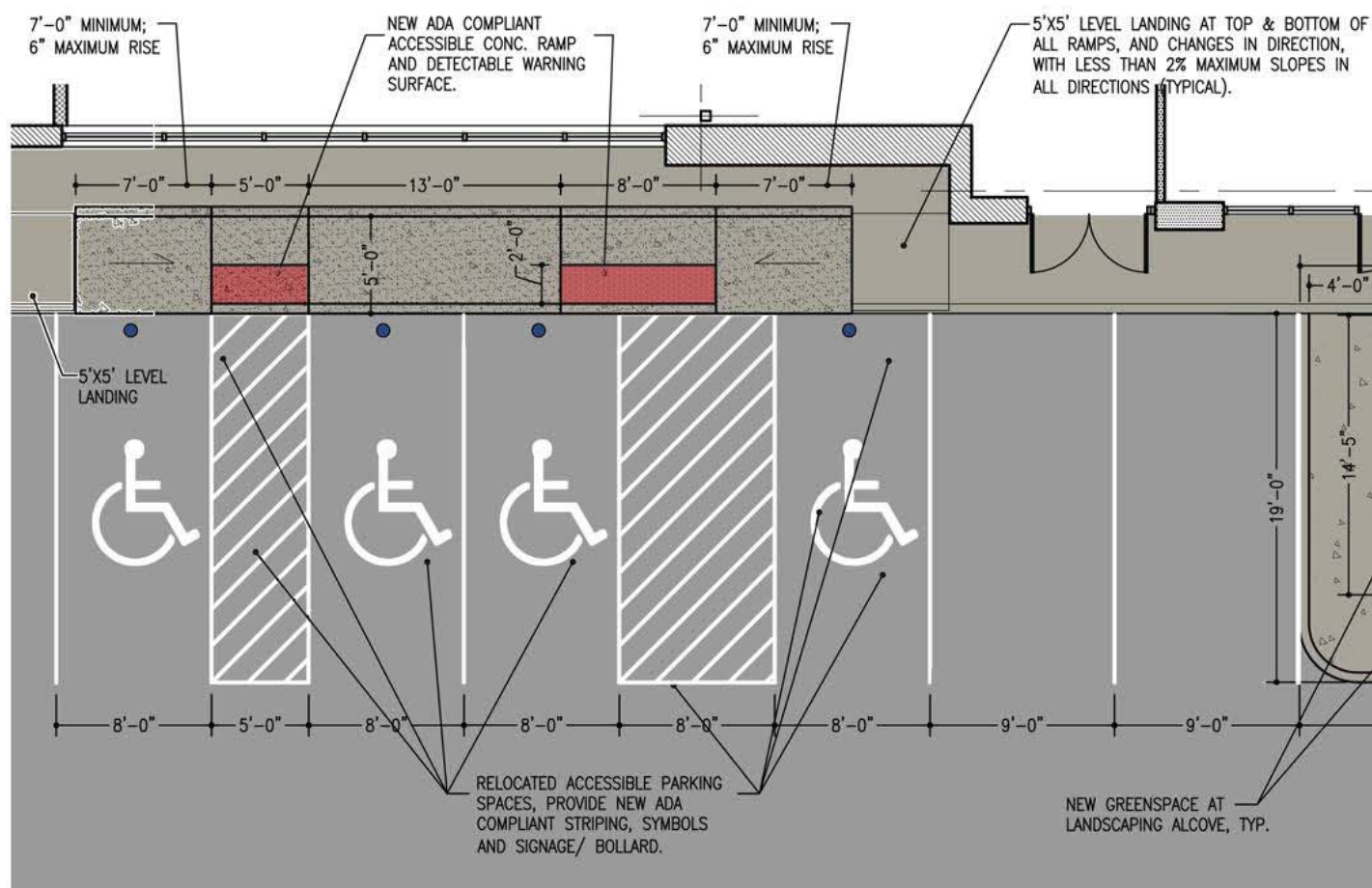
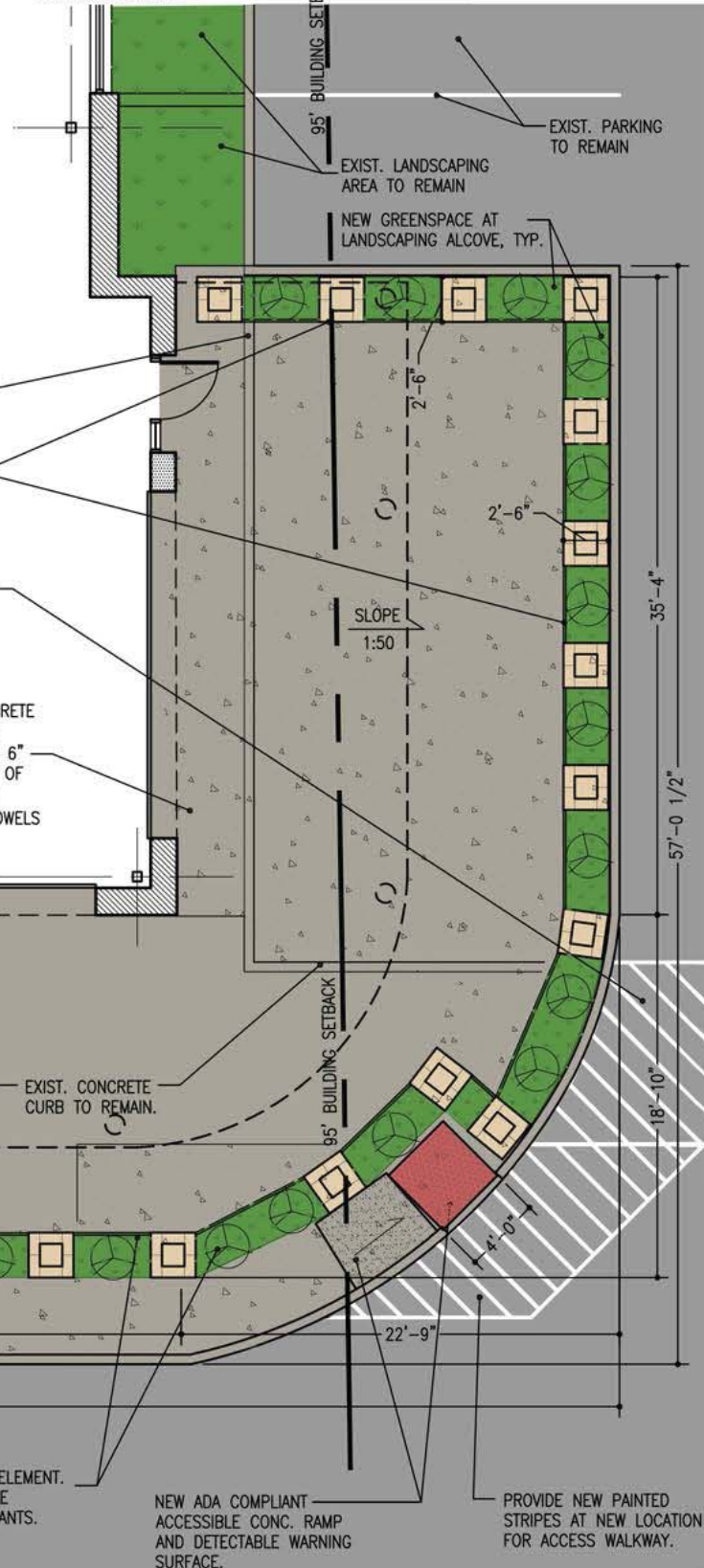
ADA NOTE:

ALL PROPOSED ADA ACCESSIBLE CONSTRUCTION SHALL COMPLY WITH ALL CURRENT FEDERAL, STATE, AND LOCAL ADA REGULATIONS.

GREENSPACE CALCULATION:

TOTAL SITE AREA	= 6.070 ACRES +/- (100%)
TOTAL BUILDING	= 1.3 ACRES +/- (21%)
TOTAL PAVEMENT	= 3.0 ACRES +/- (50%)
TOTAL GREENSPACE	= 1.8 ACRES +/- (29%)

SCOPE OF WORK TO INCLUDE THE REMOVAL OF APPROXIMATELY, +/- 250 S.F. OF EXISTING LANDSCAPED AREA. NEW OUTDOOR PATIO TO INCLUDE APPROXIMATELY, +/- 263 S.F. OF NEW LANDSCAPED AREA.



NEW CONT. CONCRETE CURB & GUTTER AT LIMITS OF NEW OUTDOOR PATIO.

NEW 'GARDEN WALL' FEATURE ELEMENT. DESIGN BASIS - BELGIAN STYLE LANDSCAPING BLOCKS WITH PLANTER.

EXISTING STRIPING LEADS TO THE SITE'S ADA ACCESSWAY TO THE PUBLIC RIGHT OF WAY. MAINTAIN PATH TO FRONT DOORS.

PROVIDE NEW ADA COMPLIANT CONCRETE SLAB OVER EXIST. ASPHALT SYSTEM (GRIND DOWN ASPHALT TO MAINTAIN 6" CLEAR FROM TOP OF SLAB TO TOP OF ASPHALT). DOWEL NEW SLAB INTO EXIST. CONCRETE CURB WITH #4 DOWELS AT 2'-0" O.C.

+ barker/nestor +
 ARCHITECTURE + DESIGN
 600 WEST CERMAK RD. CHICAGO, IL 60616 USA
 TEL: 847-763-1692 FAX: 847-763-1697

PROPOSED ARCHITECTURAL SKETCH FOR:
Bar Louie
 103 CHESTERFIELD VALLEY DR.
 CHESTERFIELD, MO 63005

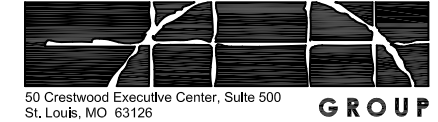


SP.301
 SCALE:

PARTIAL SITE PLAN - NEW WORK
 1" = 10'

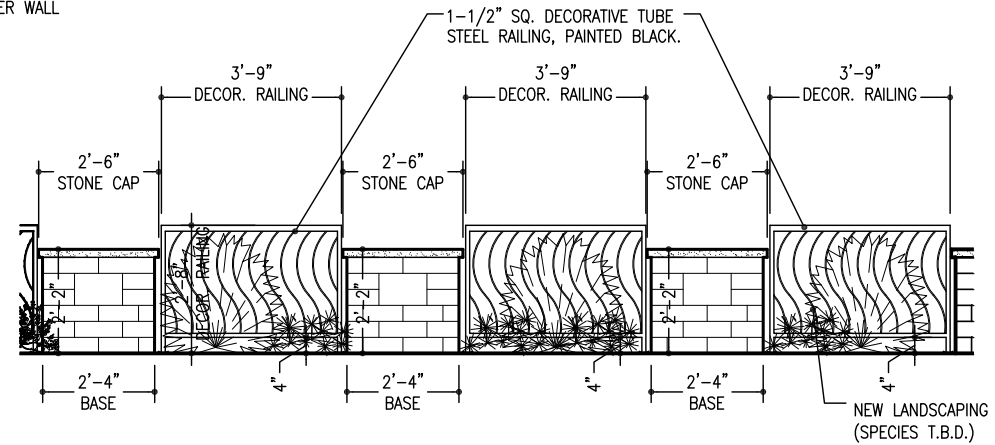
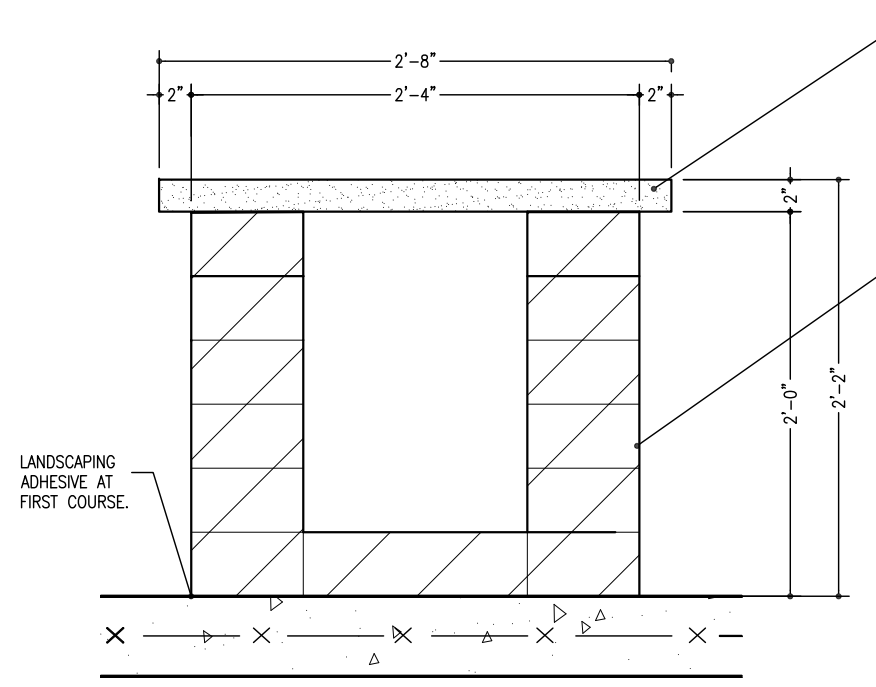


SHEET NUMBER:
SP.3



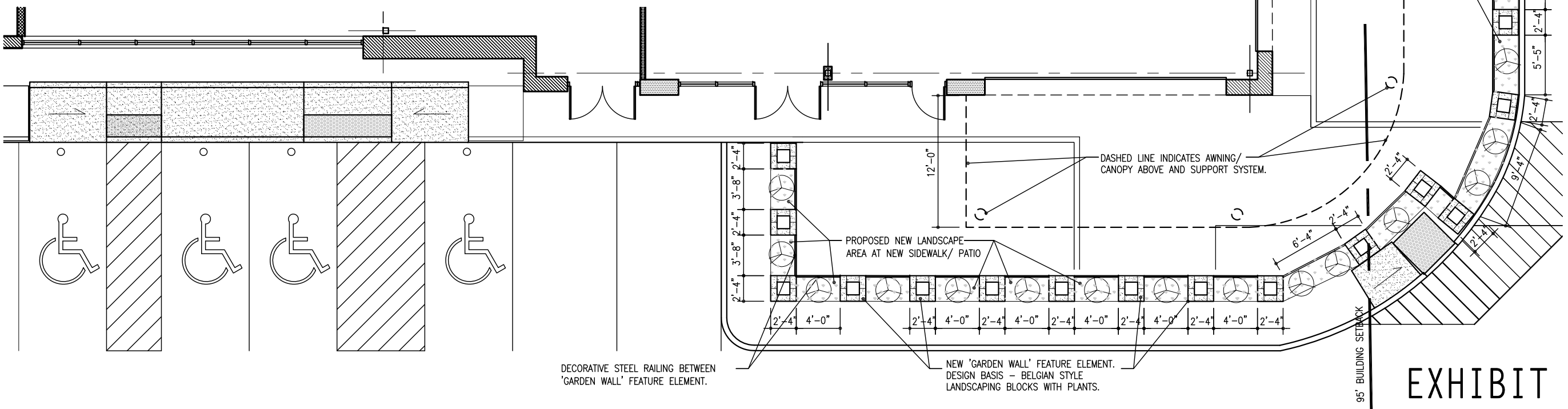
50 Crestwood Executive Center, Suite 500
 St. Louis, MO 63126
 Phone (314) 843-4320
 Fax (314) 843-4323
 pbennett@core-eng.com

PROJECT NUMBER:	N1414H CHESTERFIELD, MO
DRAWING NAME:	BLCMO
ISSUE DATE:	28 JULY 14
DRAWN BY:	SW



SP5.03 TYP. DETAIL
 SCALE: 1"=1'-0"

SP.502 LANDSCAPE WALL ELEV.
 SCALE: 1/4" = 1'-0"



SP.501 PROPOSED LANDSCAPING PLAN
 SCALE: 1" = 10'

+ b a r k e r / n e s t o r +
 A R C H I T E C T U R E + D E S I G N
 CHICAGO, IL 60616 USA TEL: 847-763+1692
 600 WEST CERMAK RD. FAX: 847-763+1697

PROPOSED ARCHITECTURAL SKETCH FOR:
Bar Louie
 103 CHESTERFIELD VALLEY DR.
 CHESTERFIELD, MO 63005
 SHEET NUMBER:
SP.5

PREVIOUS PROJECTS OUTDOOR EXAMPLES



PATIO STRING LIGHT UNDER MEZZANINE



PATIO STRING LIGHT/ SAMPLE LANDSCAPING



WALL SCONCE WITH TOP COVER



PATIO STRING LIGHT UNDER FABRIC AWNING
(RIGHT HAND SIDE)



SAMPLE PATIO STRING LIGHT (UMBRELLA)
(PROPOSED PATIO W/ CANVAS AWNING ABOVE)



AWNING LIGHT (SINGLE HEAD)
(PROPOSED LIGHT - 2 HEADS)

PROJECT NUMBER: N1414H CHESTERFIELD, MO	DRAWING NAME: BLCMO
ISSUE DATE:	DRAWN BY:

+ b a r k e r / n e s t o r +
A R C H I T E C T U R E + D E S I G N
600 WEST CERMAK RD. CHICAGO, IL 60616 USA TEL: 847+763+1692 FAX: 847+763+1697

PROPOSED ARCHITECTURAL SKETCH FOR:

Bar Louie

103 CHESTERFIELD VALLEY DR.
CHESTERFIELD, MO 63005

SHEET NUMBER: