



690 Chesterfield Pkwy W • Chesterfield MO 63017-0760
Phone: 636-537-4000 • Fax 636-537-4798 • www.chesterfield.mo.us

Department of Planning and Public Works Public Hearing Summary Report

P.Z. 06-2011 Pets & Company (667 & 671 Trade Center Boulevard): A request for a change of zoning from “M3” Planned Industrial District to “LI” Light Industrial District for a 1.072 acre tract of land and .946 acre tract of land totaling 2.018 acres located a half mile southwest of the intersection of Chesterfield Airport Road and Trade Center Boulevard. (17V340275 & 17V340242).

Summary

Pets & Company, LLC, on behalf of GHH Investments, LLC, has requested a change of zoning for two (2) parcels of land from “M3” Planned Industrial District to “LI” Light Industrial District. These two (2) undeveloped tracts of land are 1.072 and .946 acres in size totaling 2.018 acres located a half mile southwest of the intersection of Chesterfield Airport Road and Trade Center Boulevard. The intent is to change the zoning to allow for the property to be developed into a Boarding Kennel.

The City of Chesterfield Comprehensive Land Use Map delineates the subject site within the “Service/Business Park” land use designation.

A public hearing further addressing the request will be held at the August 22, 2011, City of Chesterfield Planning Commission meeting. Attached, please find a copy of the Public Hearing Notice. The Resubdivision Plat is located in packet item VIII.C. for the site.

Respectfully submitted,

A handwritten signature in black ink that reads 'Kristian Corbin'.

Kristian Corbin
Project Planner

Cc: Michael G. Herring, City Administrator
Rob Heggie, City Attorney
Michael O. Geisel, Director of Planning and Public Works
Aimee Nassif, Planning and Development Services Director

Attachments: Public Hearing Notice



NOTICE OF PUBLIC HEARING CITY OF CHESTERFIELD PLANNING COMMISSION

NOTICE IS HEREBY GIVEN that the Planning Commission of the City of Chesterfield will hold a Public Hearing on Monday, August 22, 2011 at 7:00 pm, in the Council Chambers at the City Hall, 690 Chesterfield Parkway West, Chesterfield, Missouri 63017.

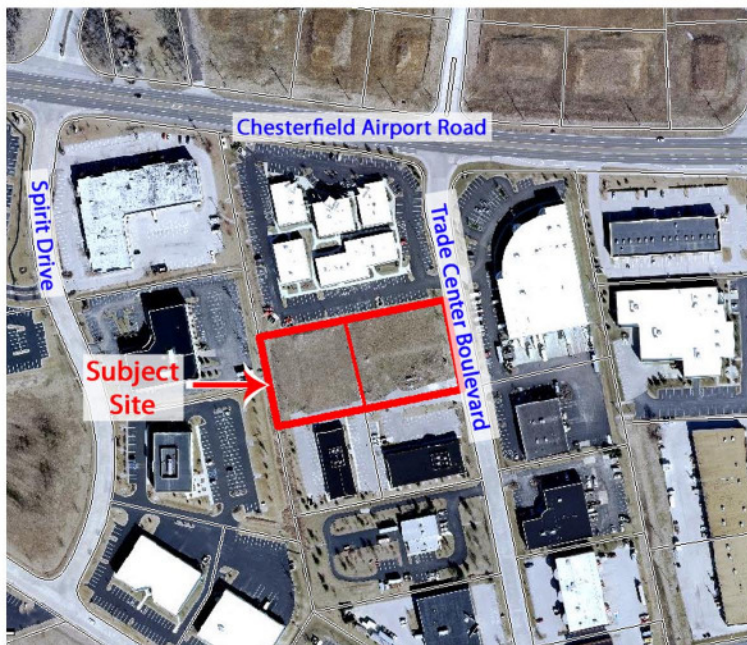
P.Z. 06-2011 Pets & Company (667 & 671 Trade Center Boulevard): A request for a change of zoning from "M3" Planned Industrial District to "LI" Light Industrial District for a 1.072 acre tract of land and .946 acre tract of land totaling 2.018 acres located southwest of the intersection of Chesterfield Airport Road and Trade Center Boulevard. (17V340275 & 17V340242).

Description of Property

A tract of land being all of adjusted lot 12 of the Boundary Adjustment Plat of Lots 12 and 13 of Spirit Trade Center Plat Two as recorded in Plat Book 349, Page 389 located in U.S. Survey 419 and 1010, Township 45 North, Range 3 East of the 5th Principal Meridian, City of Chesterfield, St. Louis County, Missouri.



City of Chesterfield
690 Chesterfield Parkway West
Chesterfield, MO 63017



Information on this Public Hearing may be found on the City's website at <http://www.chesterfield.mo.us/public-notice.html> or by contacting Project Planner Kristian Corbin at 636.537.4743 or via e-mail at kcorbin@chesterfield.mo.us. All interested parties will be given an opportunity to be heard at the Public Hearing.