

Memorandum



#3

To: Mike Geisel, City Administrator
From: Tom McCarthy *TJM*
Director of Parks, Recreation and Arts
Date: 3/4/2020
Re: Day Tripper Bus Program

*Please forward to
PRACAC for
review. ma*

As you know, we have been actively working with the cities of Ballwin, Ellisville, Manchester, and Wildwood to coordinate, collaborate, enhance and share our Senior programming opportunities. We have been cooperatively working to develop a "Day Tripper" transportation opportunity between the aforementioned cities. I am now seeking a resolution of support from the City Council, to submit along with resolutions from the other participating cities, for grant funding to purchase\lease a "Day Tripper" bus. If we are successful, the group would procure the vehicle, and initiate the two-year trial program. If we are unsuccessful in gaining funding support, we will abandon the trial. The Day Tripper Bus is a program concept that creates opportunities for increasing our senior "day trip" programming, which would not be financially possible for any city individually. Each city has been looking at mechanisms to offer additional senior programming due to the growing senior population. By partnering on this funding, there may be an opportunity to get a bus paid for on a trial basis, for the initial two years, through the state Aging Ahead program. The only expense that the anticipated funding won't pay for at this time, is the fuel that will be needed by each city when they use the Day Tripper bus. Each city will be responsible to fund their own fuel cost for their day trips and excursions. When we, the City of Chesterfield, uses the Day Tripper (bus) for our events, the fuel cost will be included in the fee charged for the trips and excursions we sponsor.

A few other items to note with the Day Tripper

1. At the beginning of each year, the five participating cities will develop a schedule for the Day Tripper bus, so each city has an equal opportunity to access the Day tripper.
2. The Day Tripper bus will be used for trips and excursions. The bus will NOT be used for routine errands or local transportation for residents, such as the grocery store or medical appointments.
3. We are still researching our options with regard to driver operations. We have yet to determine if we would hire a driver company or each City would have the opportunity to provide their own driver.
4. Ballwin has agreed to house the day tripper bus and coordinate the maintenance on the vehicle. Costs of maintenance would be shared proportionately.
5. Each City would be responsible for picking up the Day Tripper from the Ballwin storage location for their individual excursions and will be responsible for returning the bus, clean inside and out, with a full tank of gas.

6. At this time, we are looking at only using the Day Tripper for single day excursions and day trips with the Day tripper returning to Ballwin at the end of each day. The bus is not intended to be used for overnight trips.
7. The Day Tripper Bus will not be available for non-participating cities to borrow, rent, barter or trade for its use.
 8. At the end of the two-year trial program, the participating cities will evaluate the program and may determine their individual desire\need to purchase the bus and continue on with the program with the cities interested in continuing with it paying the cost, or look for alternative funding sources to keep the program running or cancel the program.

We have developed a proposed resolution for each City, expressing their support of the grant proposal, so we can include it with the overall proposal submission.

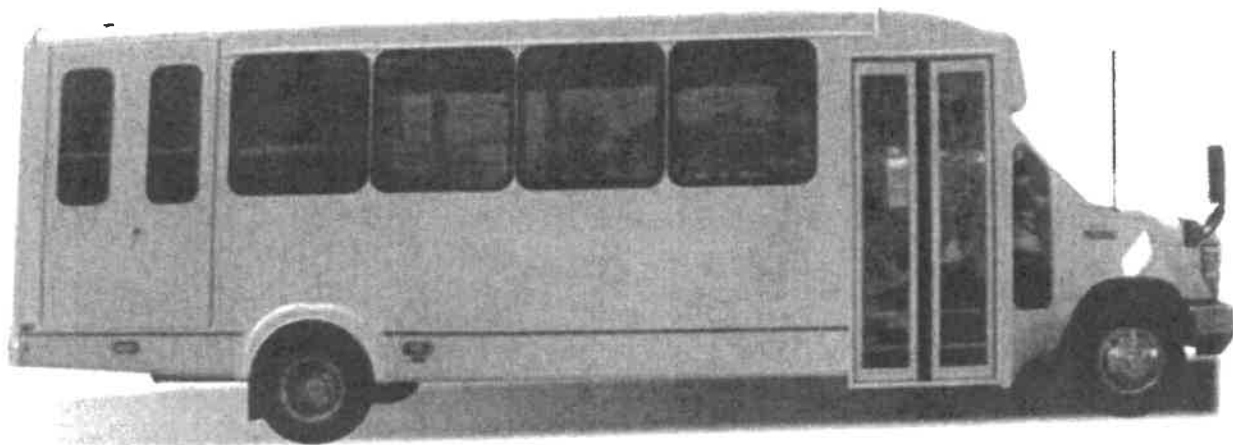
I would like to move this forward to the Parks, Recreation & Arts Committee of Council and with their approval, on to Council. As soon as the five Cities have their resolutions, we will move the proposal forward for grant funding. We do not currently have a time frame or schedule as to when we will receive a determination regarding the funding decision from Senator Koenig.

20+2wc/22+1wc/24 Passenger Shuttle

City of Ballwin Missouri



Master's
Transportation, Inc.

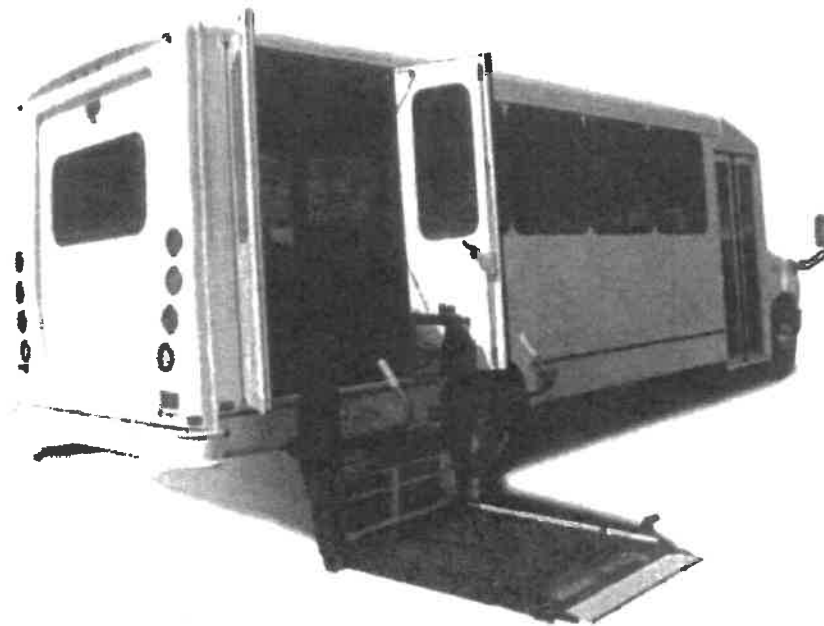


Master's Transportation has been serving the bus industry nationwide for more than 30 years. Our long-standing partnerships with the most trusted vehicles manufactures in the industry allow us to provide our clients a large inventory of comfortable, stylish and dependable vehicles.

Thank you for the opportunity to partner with you.



20+2wc/22+1wc/24 Passenger Shuttle



Chassis Specifications

Make:	Ford E450
Engine:	6.8L V10 Gas Engine
Seating Capacity:	20+2 Wheelchair, 22+1 Wheelchair or a 24 Passenger Shuttle
Transmission:	Automatic
Wheelbase:	208"
GVWR:	14,500
Mileage:	



Masters
Transportation

To learn more visit our website

www.MastersTransportation.com



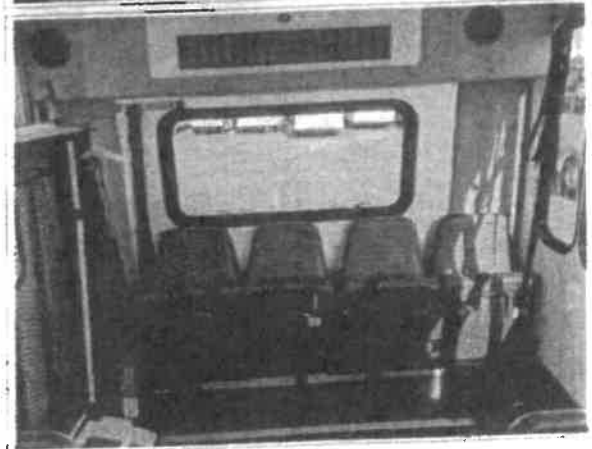
20+2wc/22+1wc/24 Passenger Shuttle

Body Specifications

Exterior:	White Paint
Interior Walls & Ceiling:	Verona Grey
Flooring:	Grey Flooring
Roof:	Roof Hatch
Passenger Seating:	Grey Mid-High Seat Back with Grab Handles In Level 1-Oxen Grey, (2) 34" Flip Seats
Door:	36" Electric Entry Door with Grab Handles
Windows:	Tinted T-Slider Windows + Emergency Push Out
Heat:	Front and Rear Heat - 65,000BTU
Air Conditioning:	Dual Compressor - 75,000 BTU
Lighting:	LED Lights
Seat Belts:	Standard Seat Belts
Wheels:	Dual Rear Wheels
Length:	27'
Width:	84"

Other Specifications

- AM/FM/USB
- Braun Wheelchair Lift (1,000lb capacity)
- Q-Straint QRT Deluxe Securements
- ADA Decals
- Interior Mirror (6" x 16")
- Hydraulic Brakes
- Back Up Alarm
- Heated Remote Mirrors
- Tilt and Cruise Aid Kit
- Fire Extinguisher
- Heated Remote Power Mirrors
- Wheel Simulators



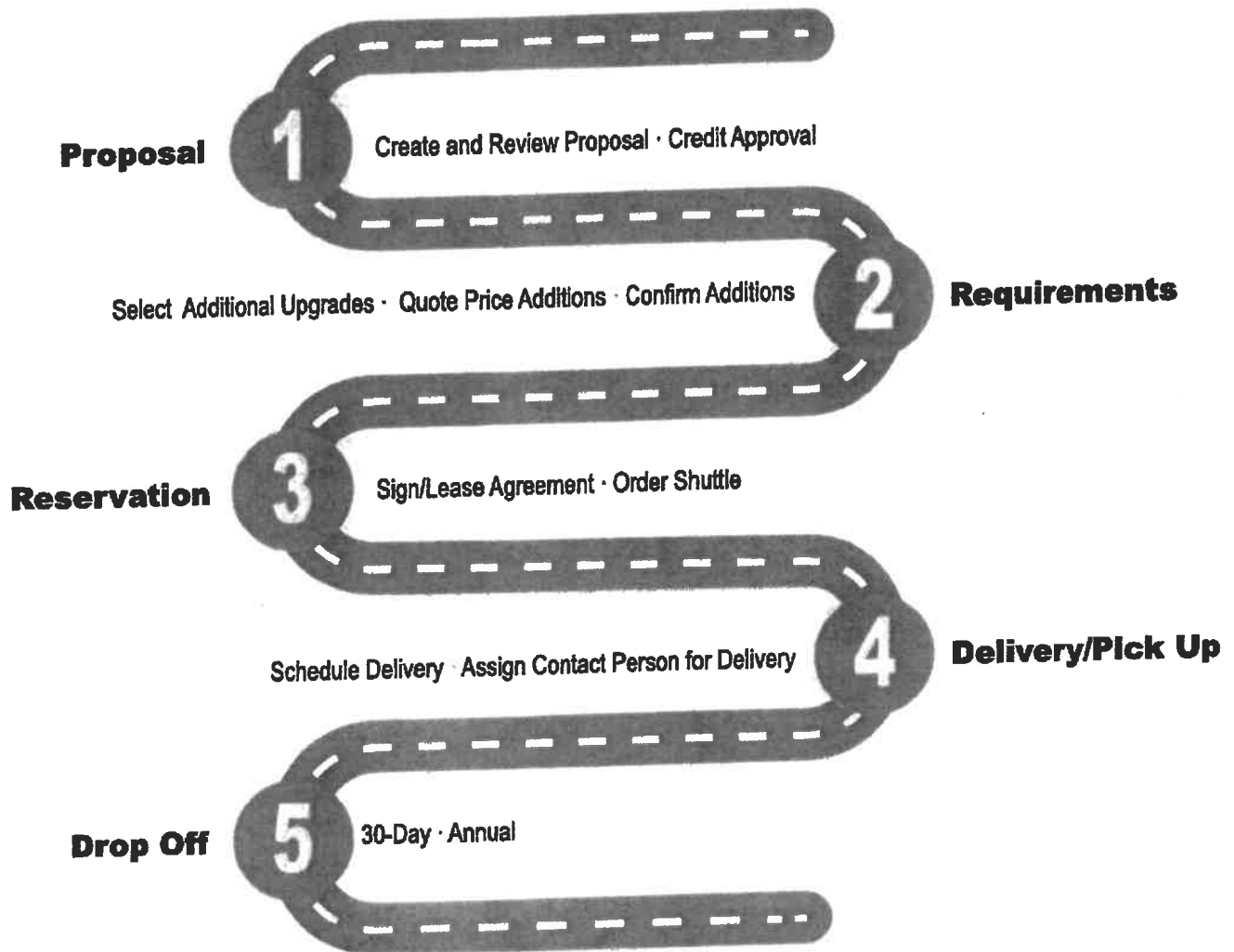
Master's
Transportation

To learn more visit our website

www.MastersTransportation.com

Master's Transportation Sales Experience

Master's Transportation is committed to ensuring you receive a custom-fit vehicle based on your needs. Our process ensures your satisfaction through these outlined steps:



Delivery of your vehicles is just the beginning. We will continue to check in with you on a regular basis to make certain your vehicle continues to operate at its maximum potential. We want to ensure your satisfactions with your partnership with Master's Transportation.



20+2wc/22+1wc/24 Passenger Shuttle

Price/Payments

Purchase Price: \$65,846.00 - after available rebates

2 - Year Lease: \$1,843.00/25,000 Miles Per Year

3 - Year Lease: \$1,514.00/25,000 Miles Per Year

4 - Year Lease: \$1,319.50/25,000 Miles Per Year

Security Deposit:

Validity: This quote expires 30 days after the date above.

- Terms and Conditions:**
- Pricing includes pre-delivery inspection and destination charges to our facility. For delivery to final destination, additional delivery charges may apply.
 - Our supplied pricing includes rebates, discounts, credits and any other incentives.
 - Pricing does not include taxes, tags or titling fees.
 - If any of the items are not listed as discussed, please advise us immediately.
 - On customer ordered units, we normally expect delivery to our facility 14-16 weeks after receipt of deposit.
 - Manufacturer's warranty on the entire vehicle is a minimum of 12 months or 12,000 miles, whichever comes first
 - There may also be extended manufacturer's warranties on the bus body and sub systems included.
 - This proposal shall remain valid for (30) thirty days from the Issue date, subject to availability.

To accept this proposal, please acknowledge by signing the Buyer's Order Form and returning it with your deposit.



Master's
Transportation

To learn more visit our website

www.MastersTransportation.com



20+2wc/22+1wc/24 Passenger Shuttle

Contact Information

Thank you for the opportunity. Please feel free to contact me with any questions.

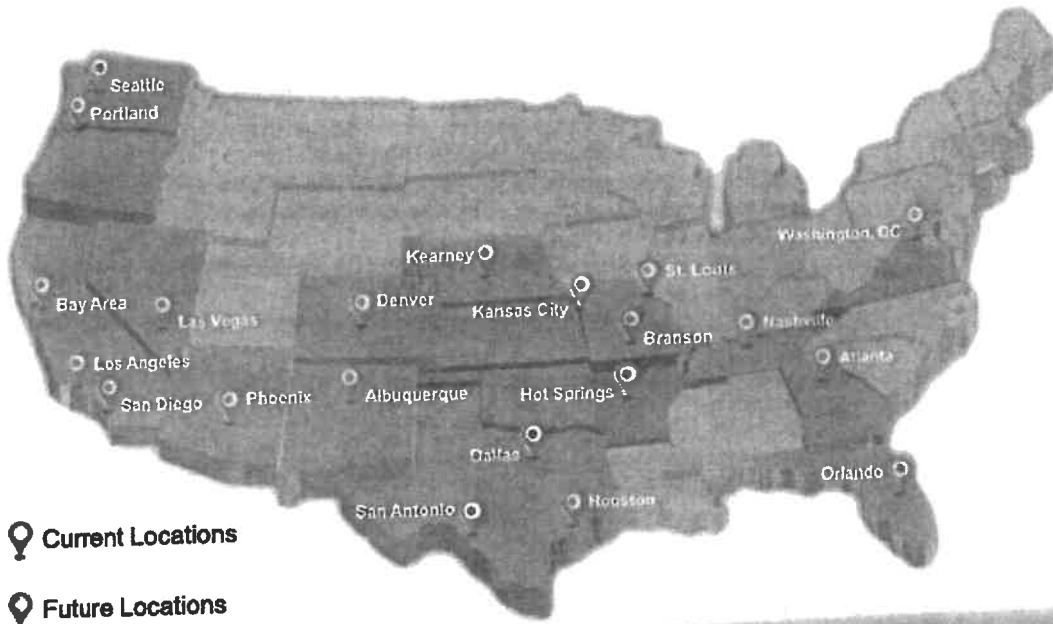


Kent Jennings

Regional Sales Manager

KJennings@MastersTransportation.com

314-451-1032

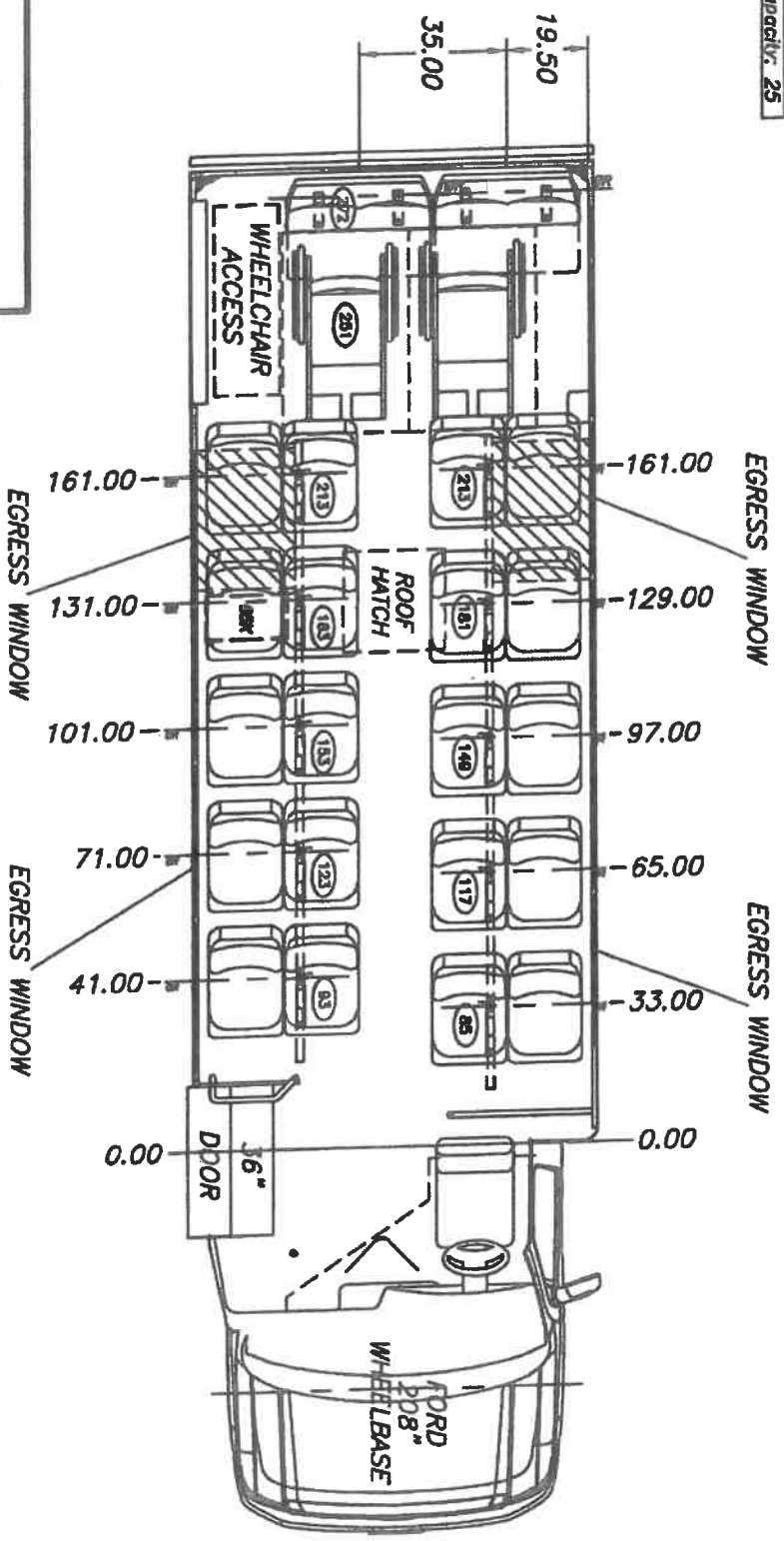


Master's
Transportation

To learn more visit our website

www.MastersTransportation.com

LEGEND
 (R) - C/L FRONT AXLE TO PASS C.A.
 Amb. Pass: 24/20
 W/C Pass: 0/2
 Max. capacity: 25



DEALER
 APPROVAL
 APPROVED
 X *Anna McCall*
 CUSTOMER SIGNATURE

NOTES:
 - 36" X 36" WINDOWS

DO NOT SCALE DRAWING
 THIS DRAWING IS THE PROPERTY OF GOSHEN, A REV GROUP COMPANY, AND IS NOT TO BE REPRODUCED OR USED IN ANY WAY DETRIMENTAL TO THEIR BEST INTEREST.

DRAWING INFORMATION
 DRAWN/MILLER (CD)
 DATE: 3/7/19
 SCALE: 1/42
 SIZE: A
 WGT:

TITLE:
 IMPULSE 270
 36" ENTRY DOOR / WC DOOR (REAR)

G GOSHEN
 REV GROUP
 1655 WALL STREET
 SUITE 600
 WILMINGTON, DE 19801
 (302) 827-1033

SEAT SPACING ± .25 (SEAT SPACING NOT TO BE LESS THAN 28.5")
 RESTRAINTS ± .25 (W/C POSITIONS NOT TO BE SMALLER THAN 30 X 48)

TOLERANCE UNLESS SPECIFIED
 UNIT NUMBER
 IMP2711-3083
 PAGE
 1 of 1

REV. 02/16
 JPM 3/7/19
 RELEASE TO PRODUCTION
 DESCRIPTION

Purpose:

The West County Day Tripper program was created to address the needs and expectations of the active older adults located within West St. Louis County, Missouri. Our research, program registration, and survey results have shown that active older adults are looking for more active programming and more recreational opportunities. Providing transportation allows our five communities to continue to provide meaningfully and enriching opportunities for this demographic in our region and offer more opportunities for local tourism.

Recent trips have included the St. Louis Soldiers Memorial Military Museum, the St. Louis Courthouse, the Sheldon Concert Hall, the Fox Theatre, as well as the historical landmarks and wine trails of Herman and St. Genevieve. Each of these trips has reached or nearly reached reservation capacity, indicating a strong interest in these trips within our community.

Our Parks and Recreation departments are dedicated to providing high-quality programs at a reasonable cost through partnerships, sponsorships, and efficient use of funding. Our five cities regularly partner to serve the West County region, recognizing the value we can provide through cooperation and shared services within our community.

Needs Assessment:

The success of the Parks and Recreation departments is largely dependent on meeting the recreational needs of the community. Over the past several years, we have seen significant growth in the participation of our senior adult programming. Trips and social opportunities for this age group are particularly impactful on their health and wellbeing, they are an important component of our programming for senior adults.

Over the next few years, we expect this need to grow as the Baby Boomers continue to retire. The median age for our service area is higher than the national average and the growth estimated in the older age groups, particularly the 65-74 age group suggests an aging population. By offering transportation we will increase the number of seniors who are able to participate in group outings and special activities and more efficiently use our funding to serve the West County community.

Proposal:

The Cities of Ballwin, Chesterfield, Ellisville, Manchester, and Wildwood would like to request funding for a pilot program to fund the lease of a shared shuttle bus. Each City would have access to the shared shuttle for senior recreation programs that include day trips in the St. Louis and surrounding areas of Missouri.

These five cities currently work cooperatively on the Lafayette Older Adults Program (L.O.A.P's) to provide twice-monthly recreational events, special luncheons, and day trips. The addition of a shuttle could expand the programming and allow more participation for each trip and also the number of trips offered by each municipality.

Included in this proposal are the anticipated funds to begin a pilot program for the West County Senior Shuttle

2-year pilot program budget

	Request	
Lease Ford E450 20+2 Wheelchair shuttle	\$37,000	\$1,502/month 2-year lease 25,000 miles per year
Labor	\$52,000	Driver \$25/hr 20 hrs./wk/2years
Insurance	\$1,710.00	\$855/year
Maintenance	\$1,000	\$500/year
Signage/Branding	\$3000	Vehicle Skin
Licensing	\$150	Class C License (5)
Vehicle Registration	0	
Other		
Totals	\$94,860	2-year pilot program

*Purchase Option \$66,000

** 2-year Lease residual purchase price \$34,256

A RESOLUTION SUPPORTING A COOPERATIVE PROGRAM BETWEEN THE CITIES OF CHESTERFIELD, ELLISVILLE, MANCHESTER, WILDWOOD AND BALLWIN FOR LEASING A PASSENGER SHUTTLE BUS, WITH AN OPTION TO PURCHASE, TO ENHANCE OLDER ADULT PROGRAMMING.

WHEREAS, the cities of Ballwin, Chesterfield, Ellisville, Manchester and Wildwood created the West County Day Tripper Program to address the needs and expectations of the active older adults located in West St. Louis County, Missouri; and

WHEREAS, research, program registration and survey results within the cities have shown that active older adults are looking for more programming and recreational opportunities. Providing transportation allows the cities to provide opportunities for active older adults and to offer more opportunities for local tourism; and

WHEREAS, recent trips have included the St. Louis Soldiers Memorial Military Museum, the St. Louis Courthouse, the Sheldon Concert Hall, the Fox Theater and other historical landmarks as well as the wine trails of Hermann and Ste. Genevieve. Each of these trips has reached or nearly reached reservation capacity, reinforcing a strong interest in such trips; and

WHEREAS, the older adult segment of the population will continue to grow as Baby Boomers retire. This is reflected by significant growth in the 65-74-year-old age group. By offering transportation, the cities will increase the number of senior citizens who are able to participate in group outings and special activities and to more effectively use funding sources to serve the West County community; and

WHEREAS, the cities of Ballwin, Chesterfield, Ellisville, Manchester and Wildwood intend to request funding for a pilot program to fund the lease of a shared 22-24 passenger shuttle bus, with an option to purchase. Each city would have access to the shared shuttle for senior recreation programs that include day trips in the St. Louis Metropolitan area and surrounding areas of Missouri.

THEREFORE, BE IT RESOLVED by the Mayor and City Council of Chesterfield, support a cooperative program between the cities of Chesterfield, Ellisville, Manchester, Wildwood and Ballwin for leasing a passenger shuttle bus, with an option to purchase, to enhance older adult programming.

This resolution Passed Ordinance shall be in full force and effect from and after its passage approval.

Passed and approved this _____ day of _____, 2020.

Mayor, Bob Nation

Attest City Clerk: Vickie McGownd