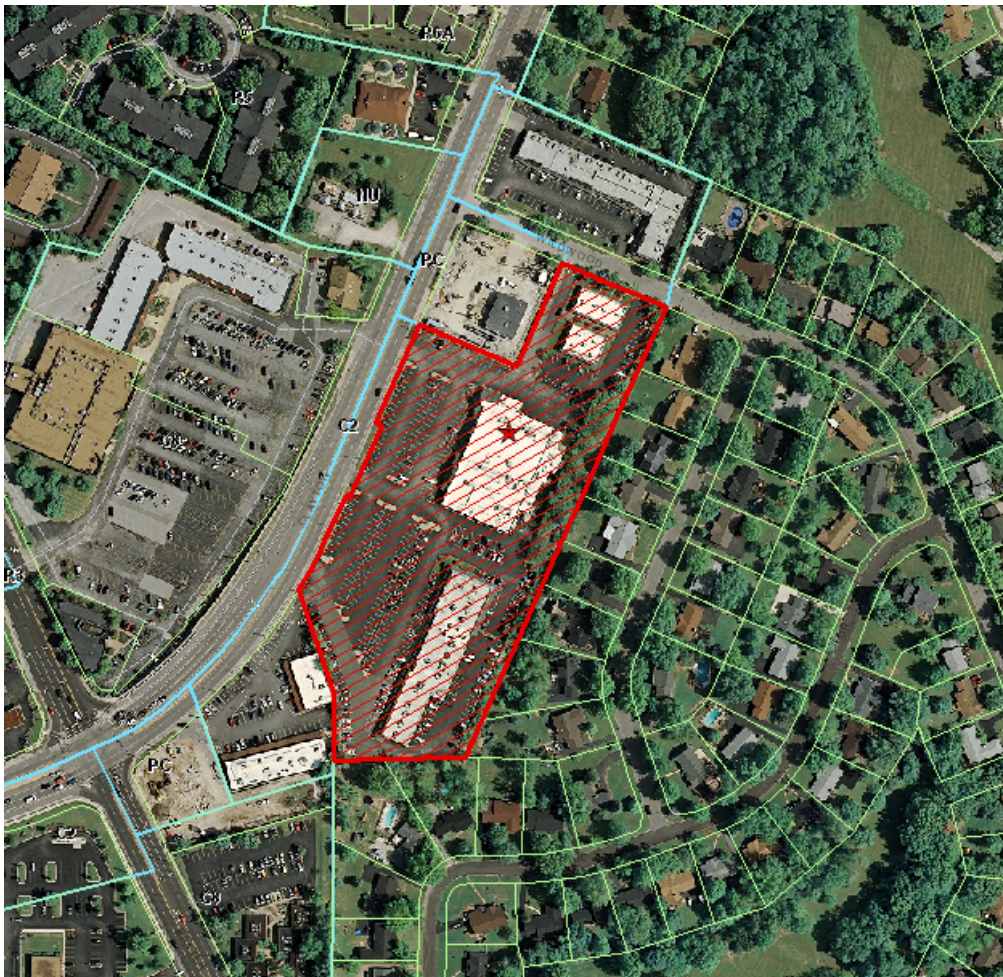


## NOTICE OF PUBLIC HEARING CITY OF CHESTERFIELD PLANNING COMMISSION

**NOTICE IS HEREBY GIVEN** that the Planning Commission of the City of Chesterfield will hold a Public Hearing on Monday, July 28, 2008, at 7:00 PM in the Council Chambers at the City Hall, 690 Chesterfield Parkway West, Chesterfield, Missouri 63017.

Said hearing will be as follows:

**T.S.P. 03-2008 Cricket Communications (Wildwood Plaza Shopping Center):** A request to obtain approval for a Telecommunication Facility Siting Permit in a "C2" Shopping District-zoned 6.82 acre tract of land located at 14808 Clayton Road, at the intersection of Clayton Road and Wildwood Parkway. (21R420686).

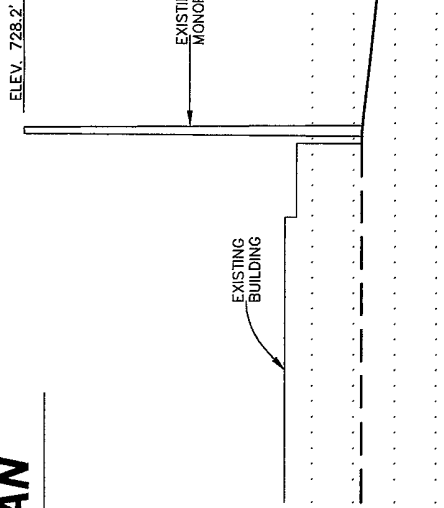
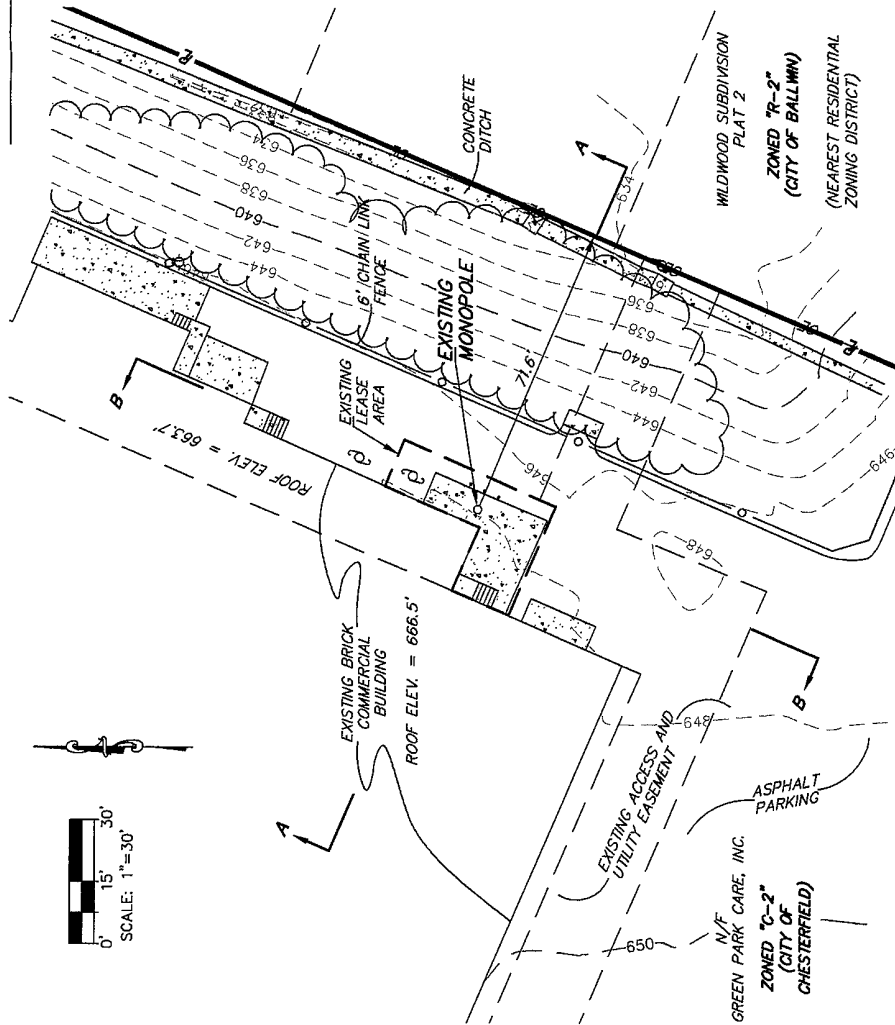
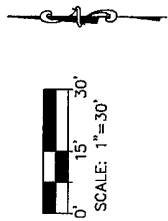


Anyone interested in the proceedings will be given an opportunity to be heard. Copies of the request are available for review in the Department of Planning and Public Works at the Chesterfield City Hall, 690 Chesterfield Parkway West during weekdays between the hours of 8:30 a.m. and 4:30 p.m. If you should need additional information about this project, please contact Anissa McCaskill-Clay, Lead Senior Planner, by telephone at 636-537-4737 or by email at [amccaskill@chesterfield.mo.us](mailto:amccaskill@chesterfield.mo.us).

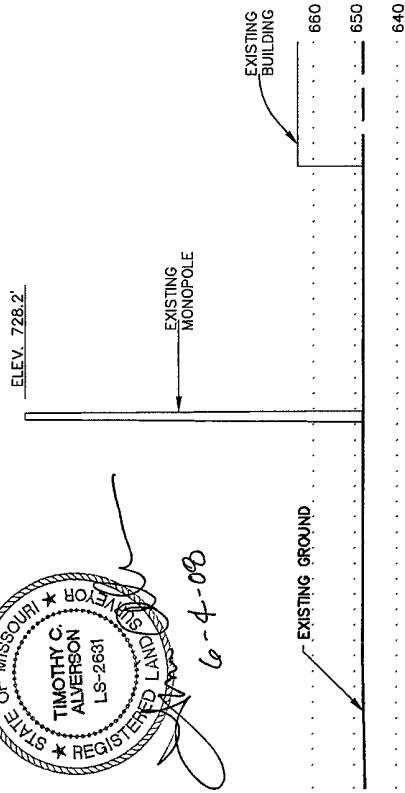
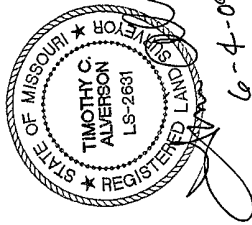
CITY OF CHESTERFIELD  
Maurice L. Hirsch, Jr., Chair  
Chesterfield Planning Commission



# SITE PLAN



**SECTION A-A**  
SCALE 1"=30' H/V



**SECTION B-B**  
SCALE 1"=30' H/V

**LOCATION OF NEAREST RESIDENTIAL STRUCTURES**

ADDRESS	DISTANCE
465 IVYWOOD DRIVE	136 FEET
461 IVYWOOD DRIVE	215 FEET
469 IVYWOOD DRIVE	250 FEET
459 IVYWOOD DRIVE	293 FEET
471 IVYWOOD DRIVE	318 FEET
457 IVYWOOD DRIVE	330 FEET
475 IVYWOOD DRIVE	348 FEET
464 IVYWOOD DRIVE	381 FEET
460 IVYWOOD DRIVE	408 FEET
468 IVYWOOD DRIVE	434 FEET

**EXISTING MONOPOLE**

BASE ELEVATION = 646.7 FEET  
TOP ELEVATION = 728.2 FEET  
TOWER HEIGHT = 81.5 FEET

**NOTES**

SITE BENCHMARK - TOP OF SOUTH EDGE OF CONCRETE PAD AT BASE OF TOWER. ELEVATION = 686.71 FEET

BENCHMARK - NGS PUBLISHED CONTROL POINT AA8709 - SURVEY DISK SET IN TOP OF CONCRETE MONUMENT STAMPED SL-68 1992. ELEVATION = 562.97 FEET

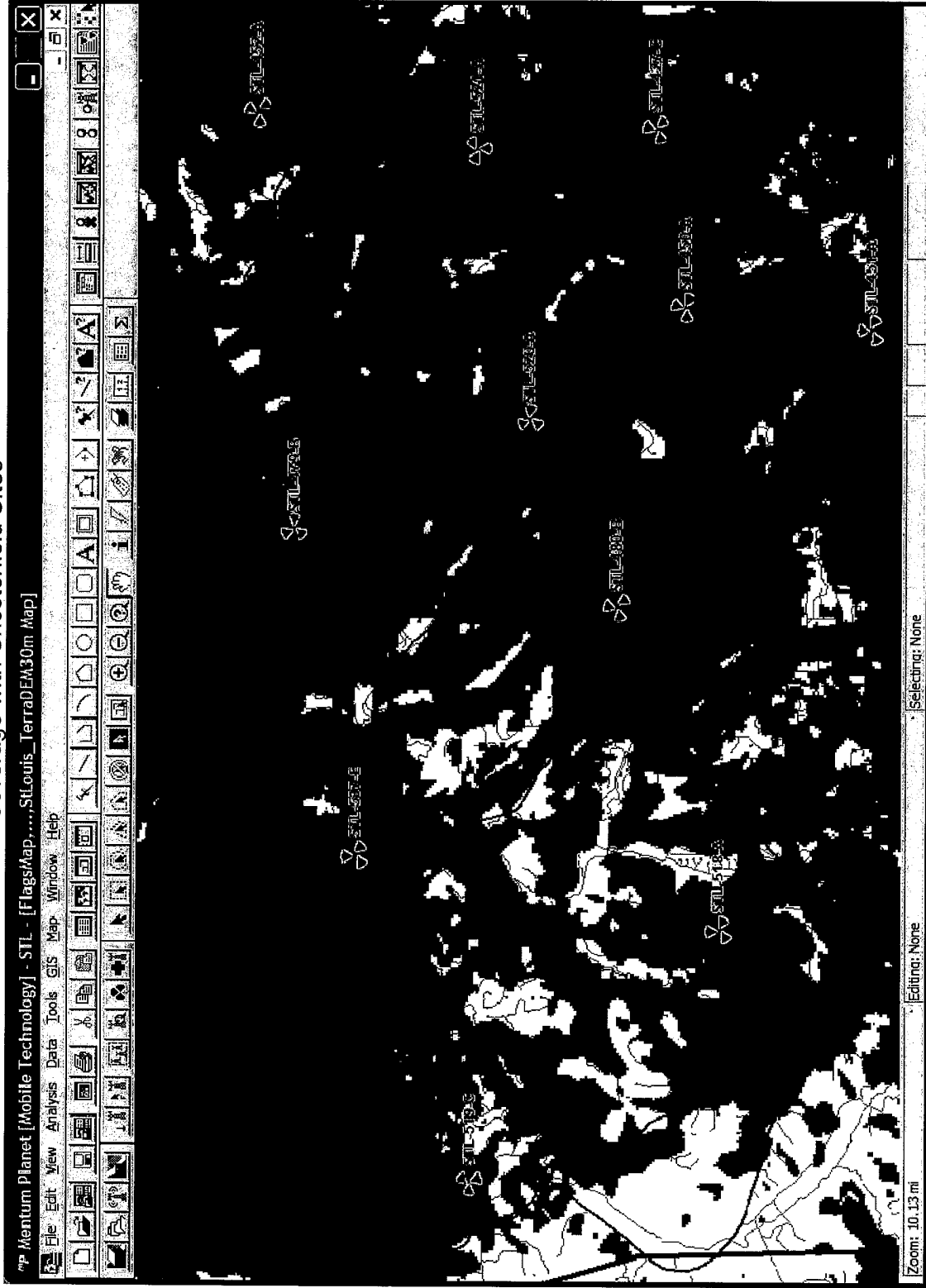
Prepared By:  
**ALVERSON SURVEYING**  
405 Gregory Place  
Coffeen, Illinois 62017  
Phone (217) 534-6606



# Coverage – Chesterfield Sites

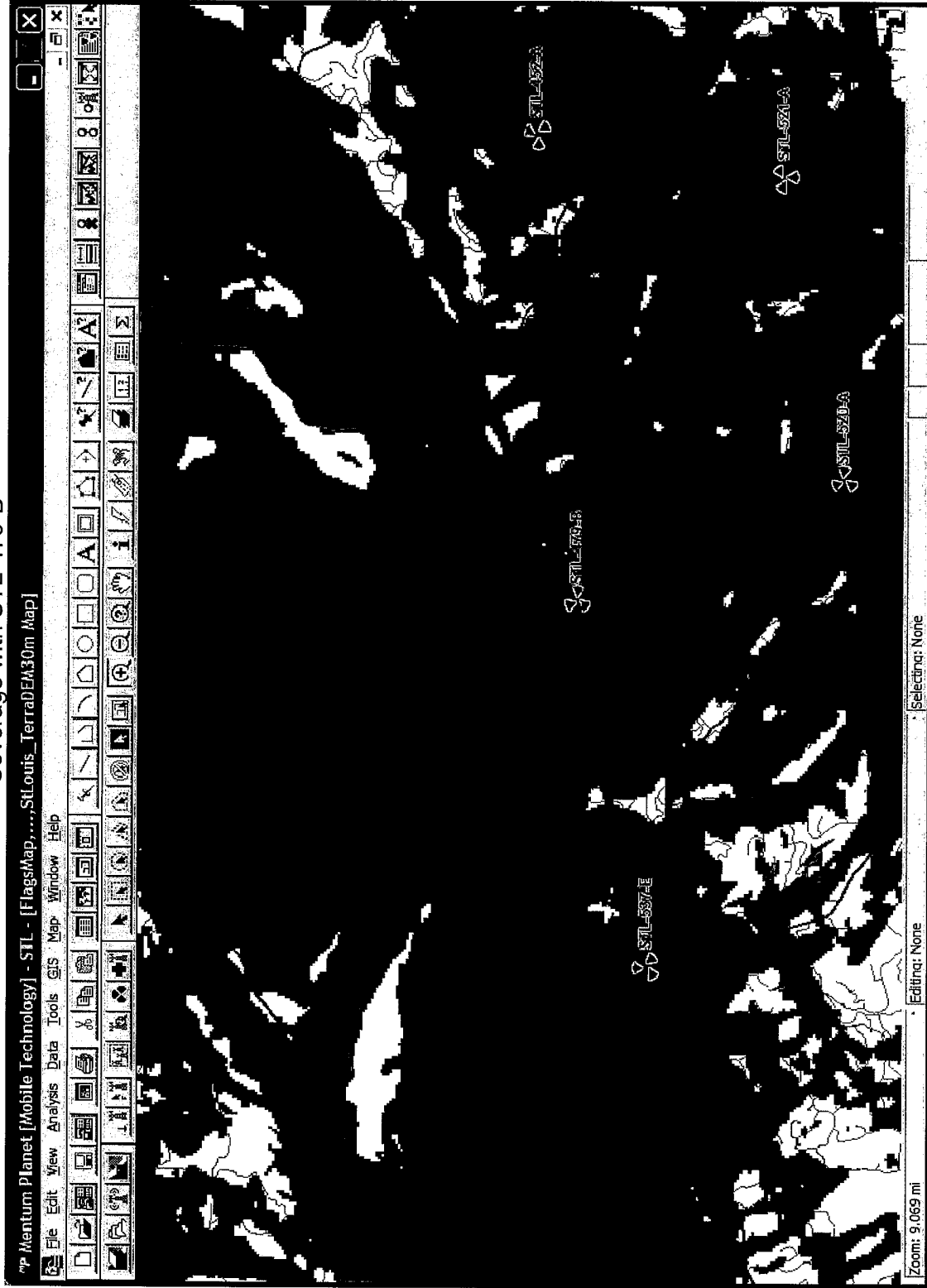
- Coverage with chesterfield sites
- Coverage without chesterfield sites
- Coverage with STL-479-B
- Coverage without STL-479-B
- Coverage with STL-537-E
- Coverage without STL-537-E
- Coverage with STL-520-A
- Coverage without STL-520-A
- Coverage with STL-480-B
- Coverage without STL-480-B
- Coverage with STL-452-A
- Coverage without STL-452-A
- Coverage with STL-519-C
- Coverage without STL-519-C
- Coverage with STL-450-A
- Coverage without STL-450-A
- The predicted plots include one or more of the six sites in Chesterfield. For instance, while predicting with/without plots for STL-479-B, five other sites in chesterfield are taken into consideration for prediction purposes.

# Coverage with Chesterfield Sites





# Coverage with STL-479-B

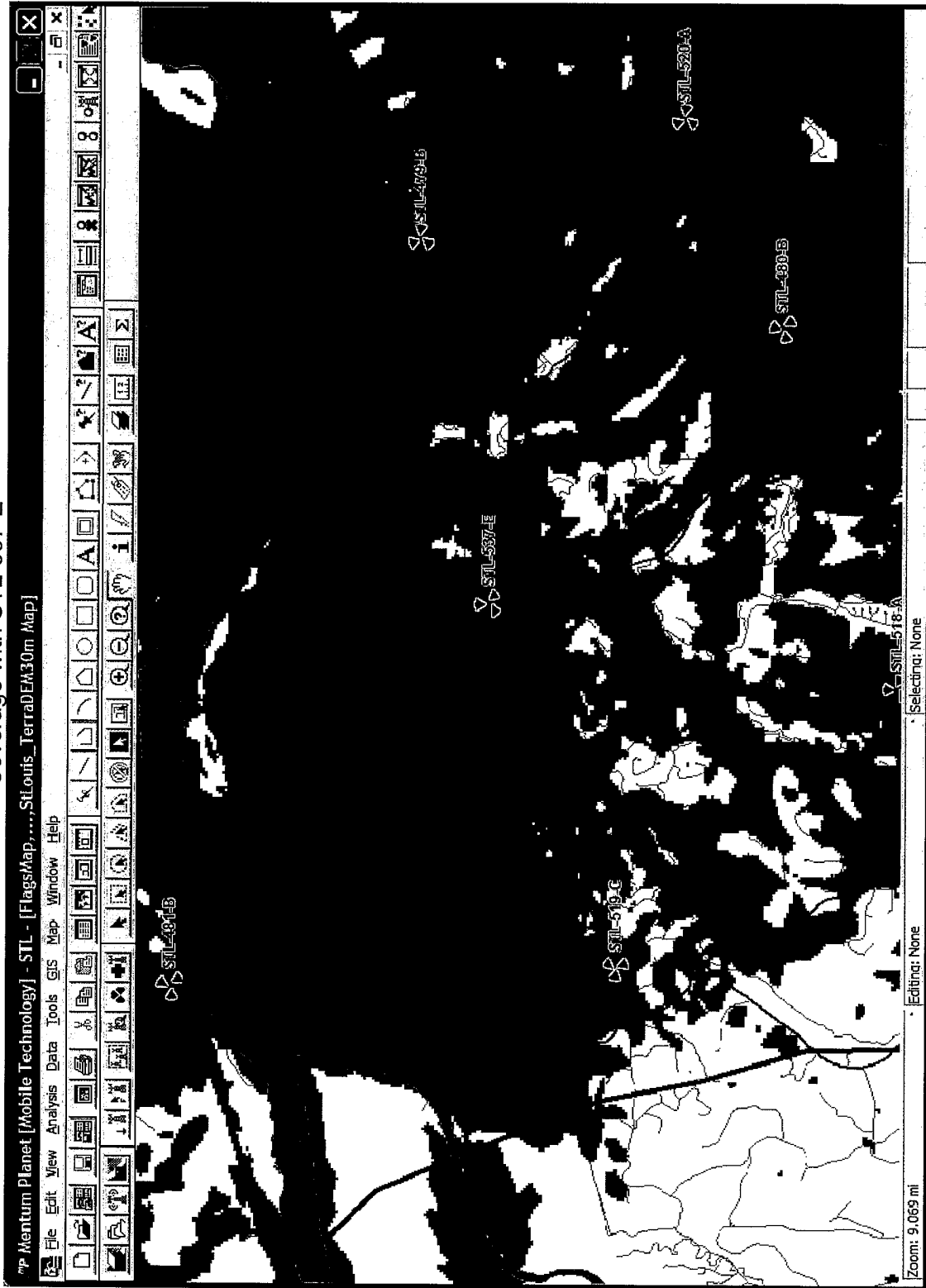




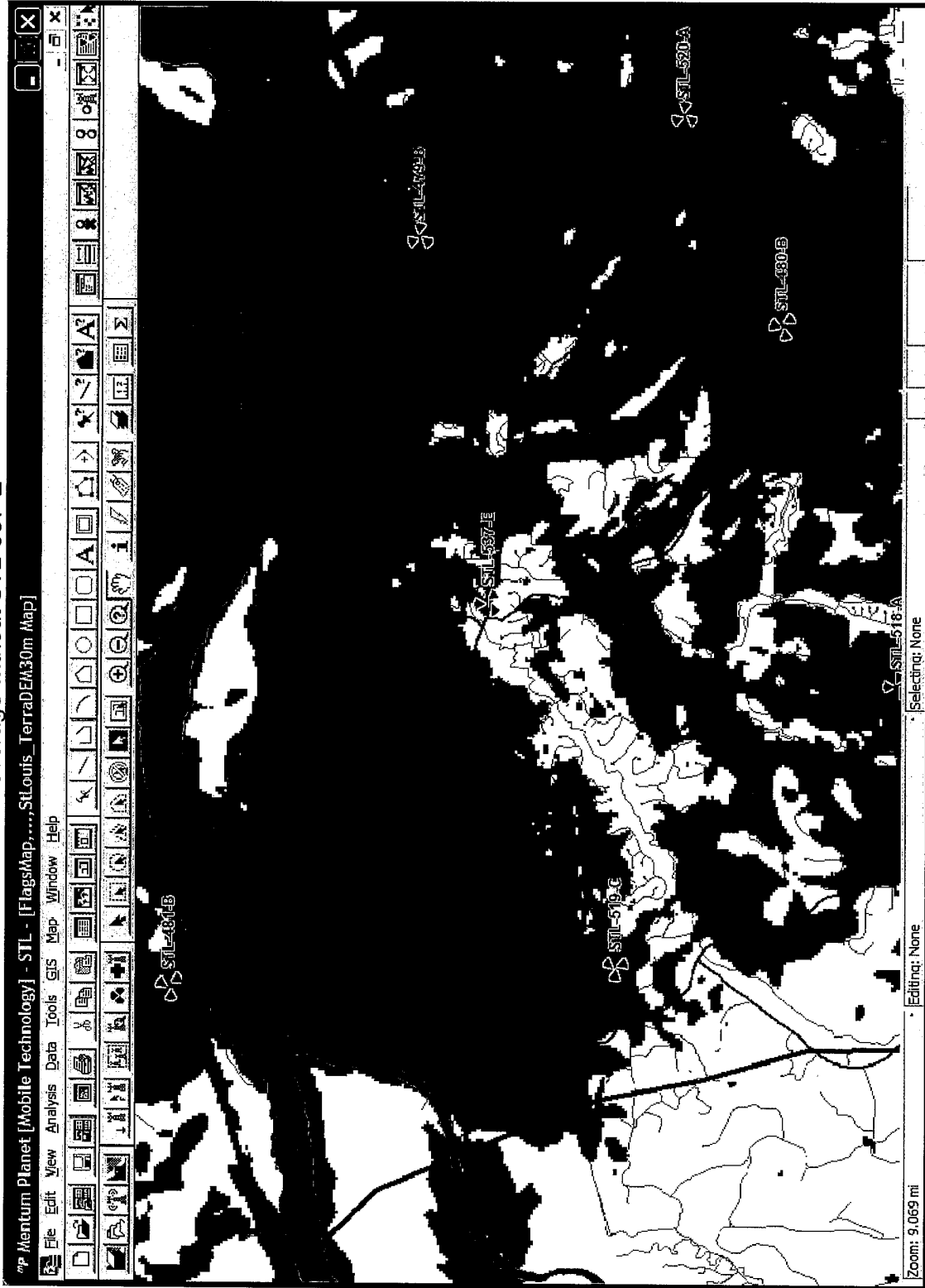
# Coverage without STL-479-B



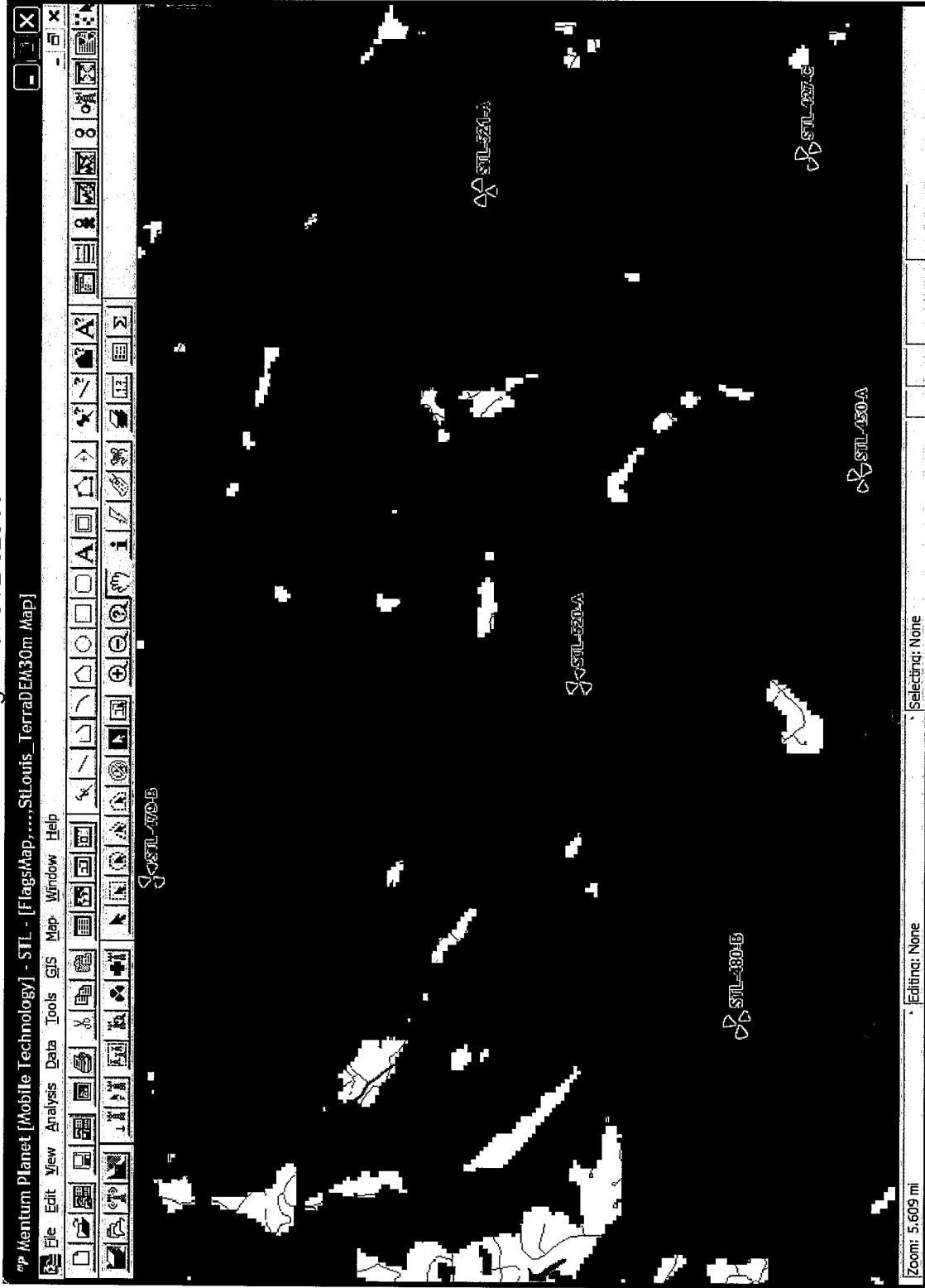
# Coverage with STL-537-E



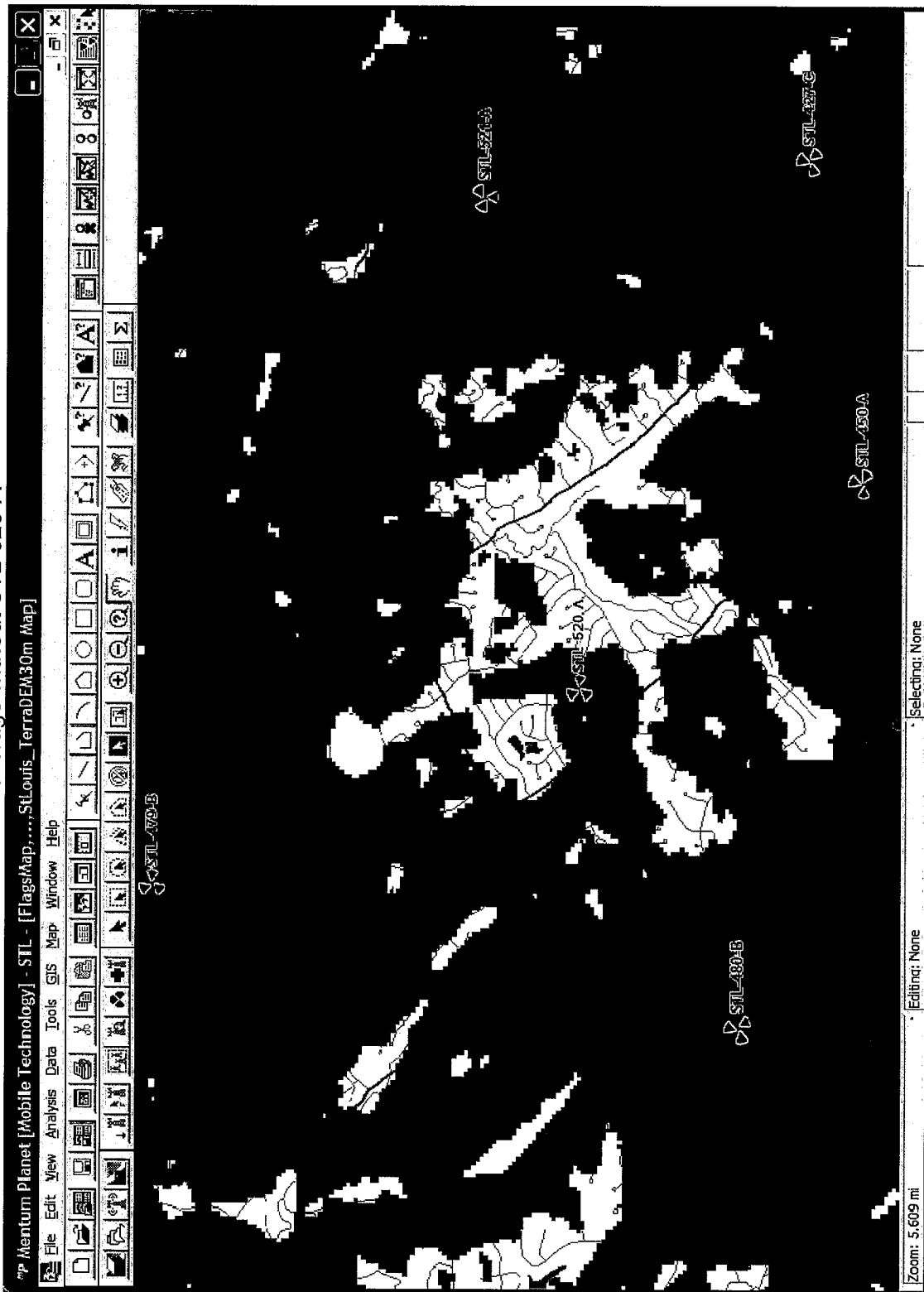
# Coverage without STL-537-E



# Coverage with STL-520-A



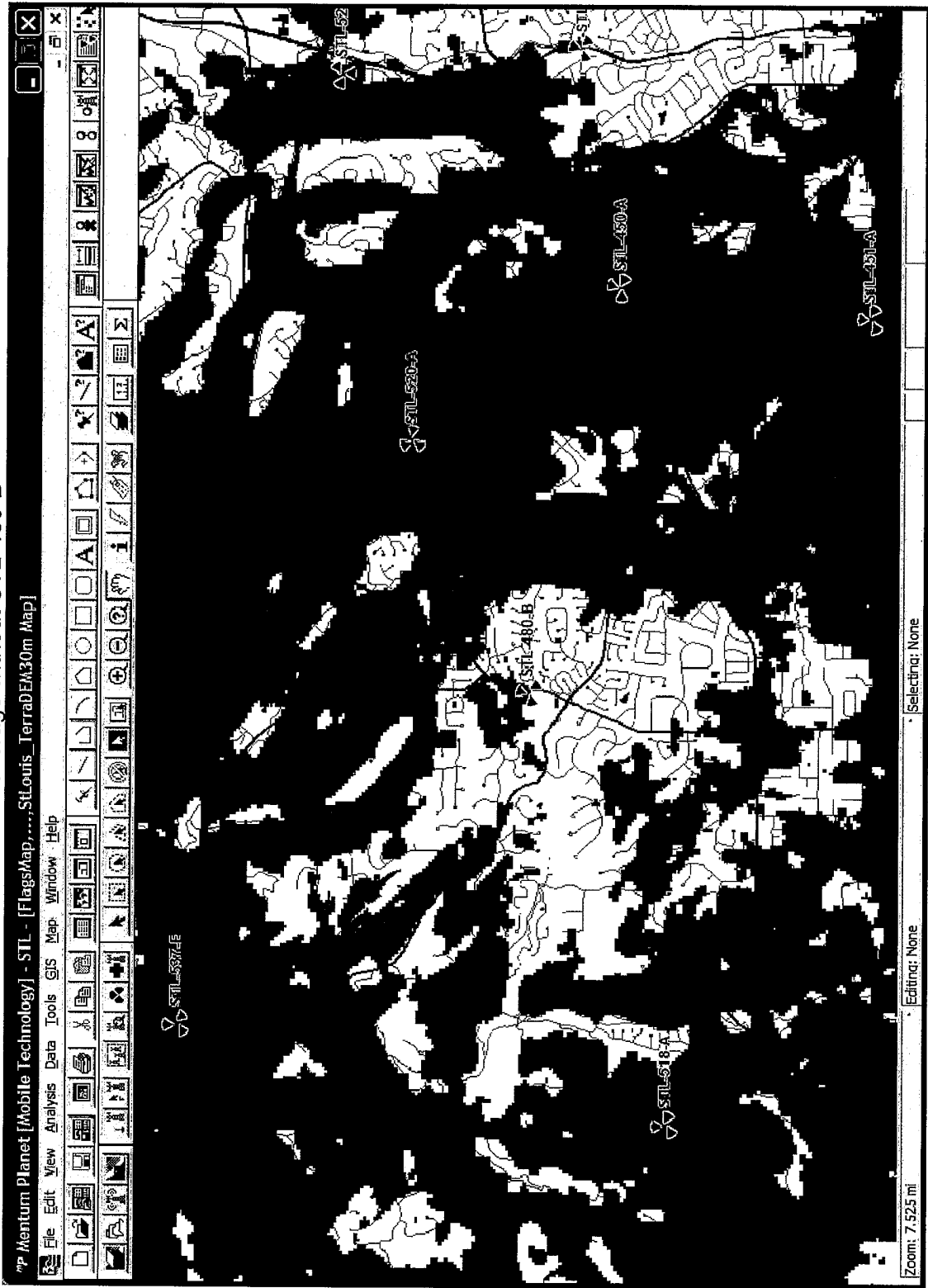
# Coverage without STL-520-A



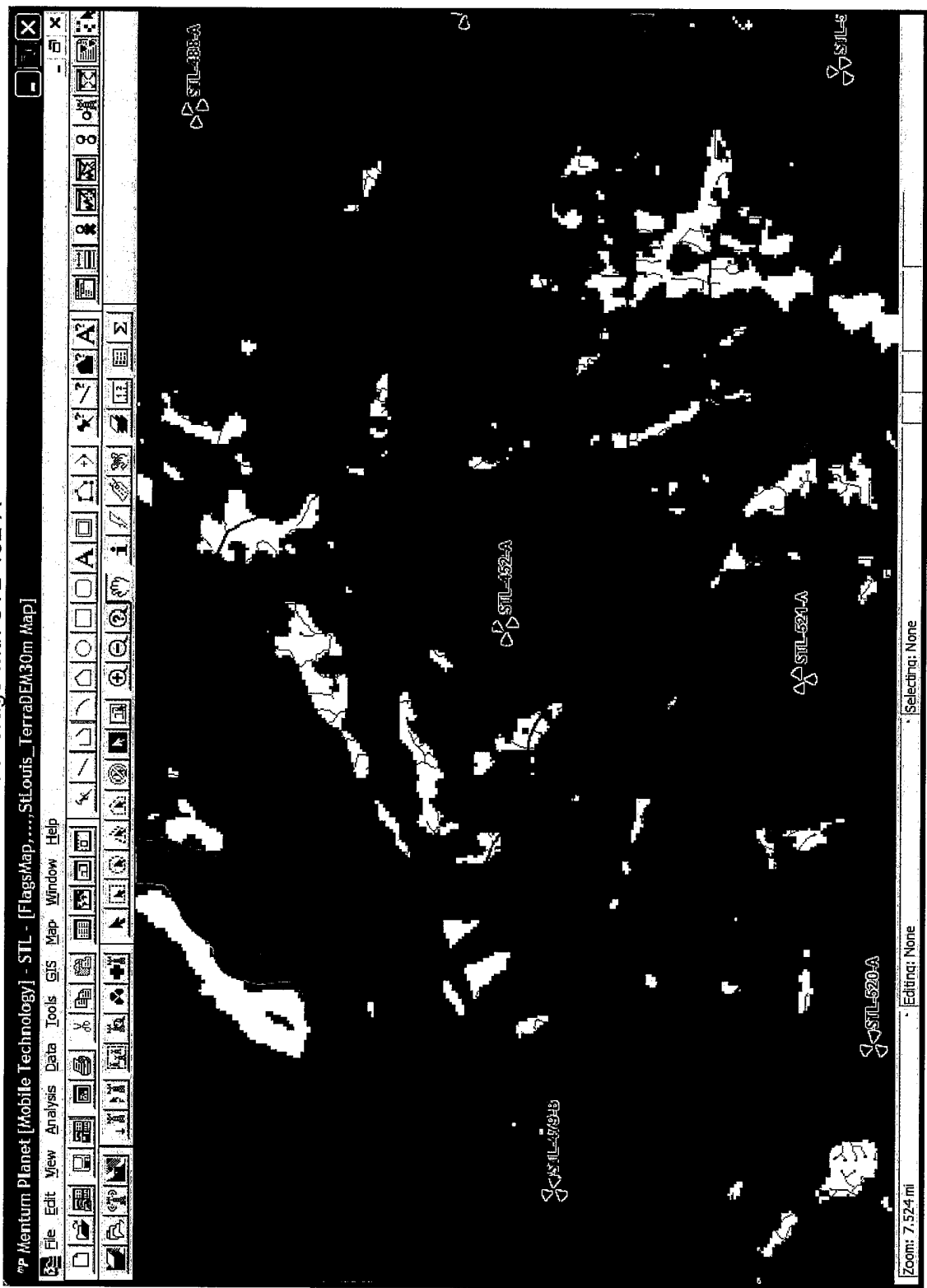
# Coverage with STL-480-B



# Coverage without STL-480-B

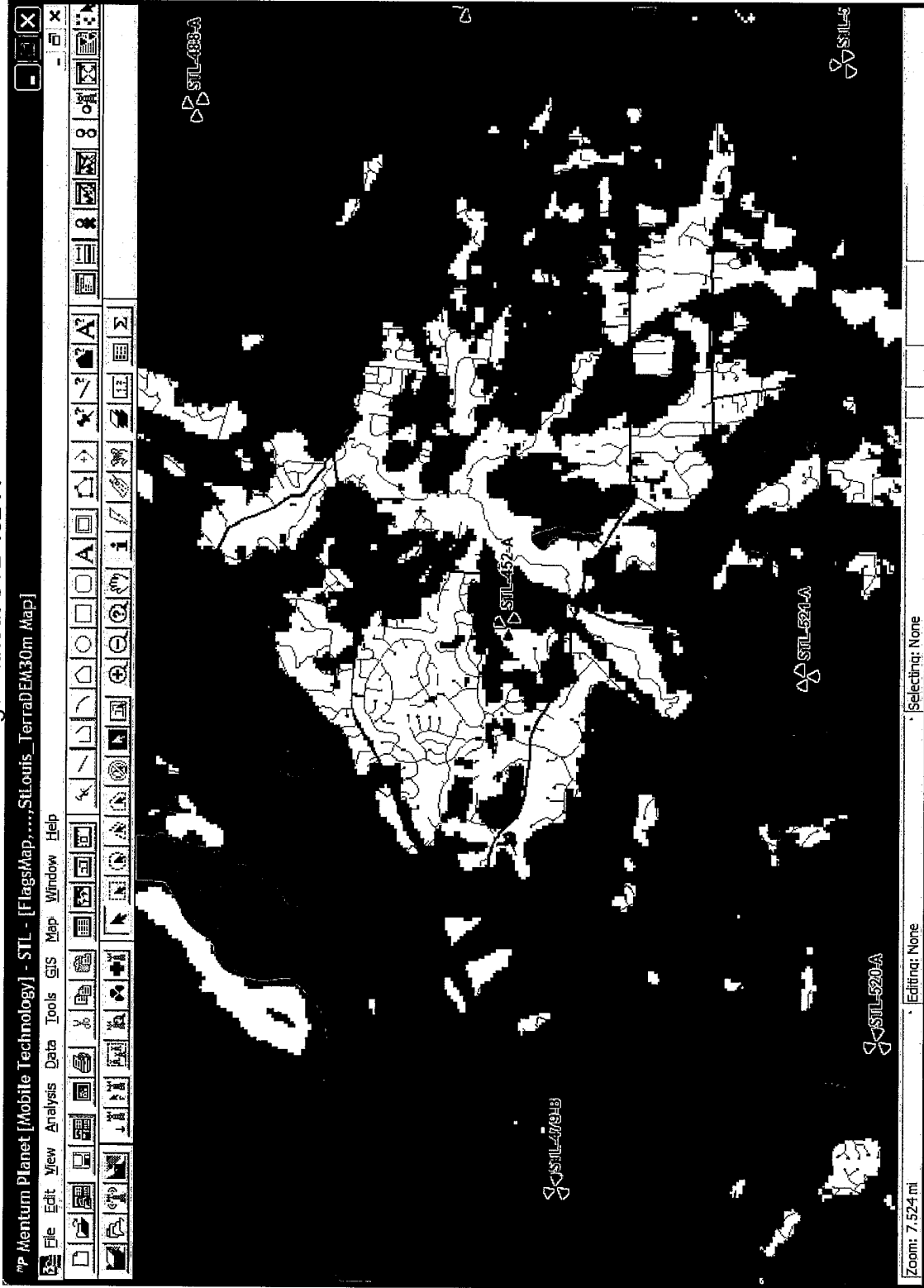


# Coverage with STL-452-A



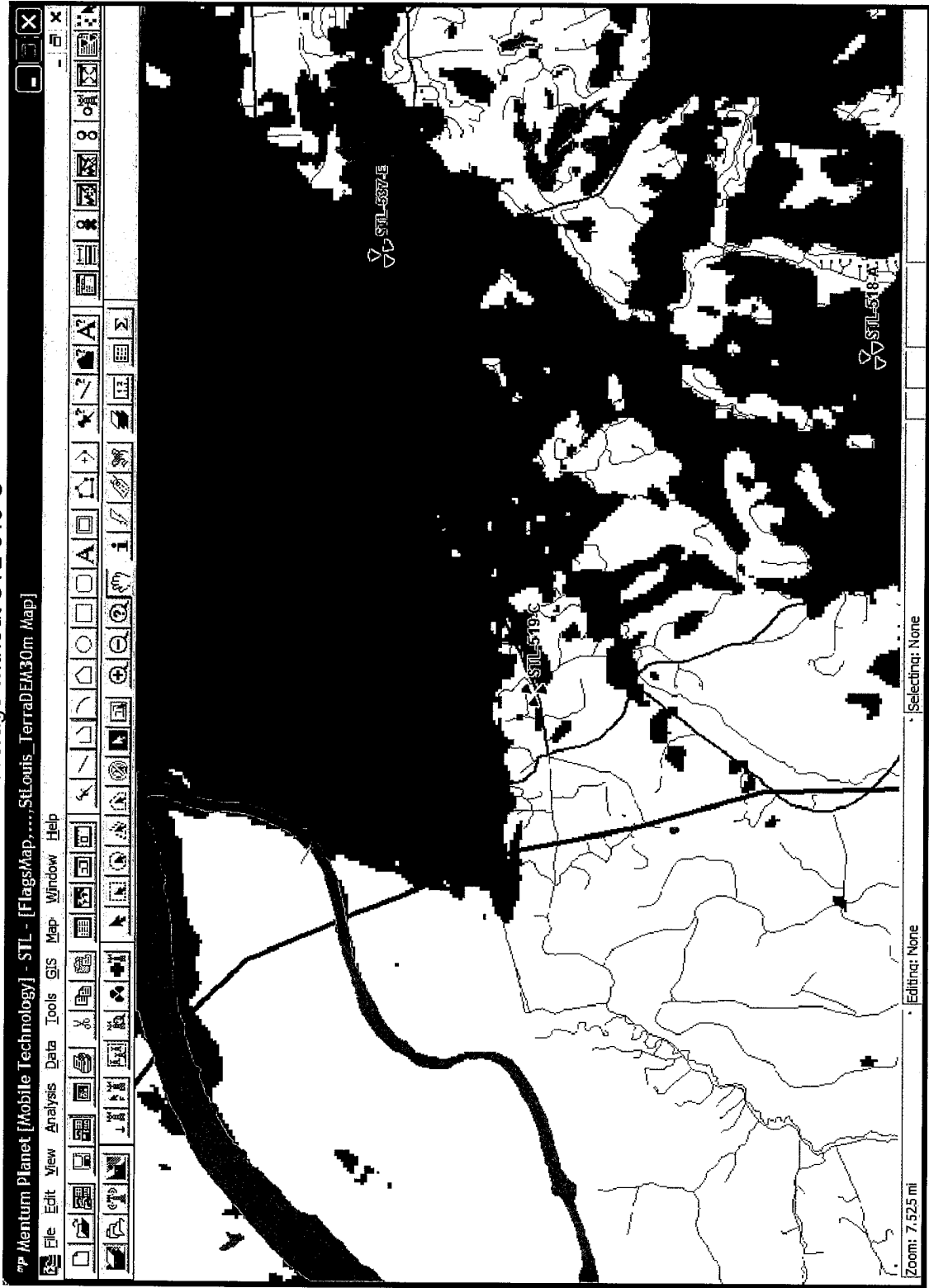


Coverage without STL-452-A

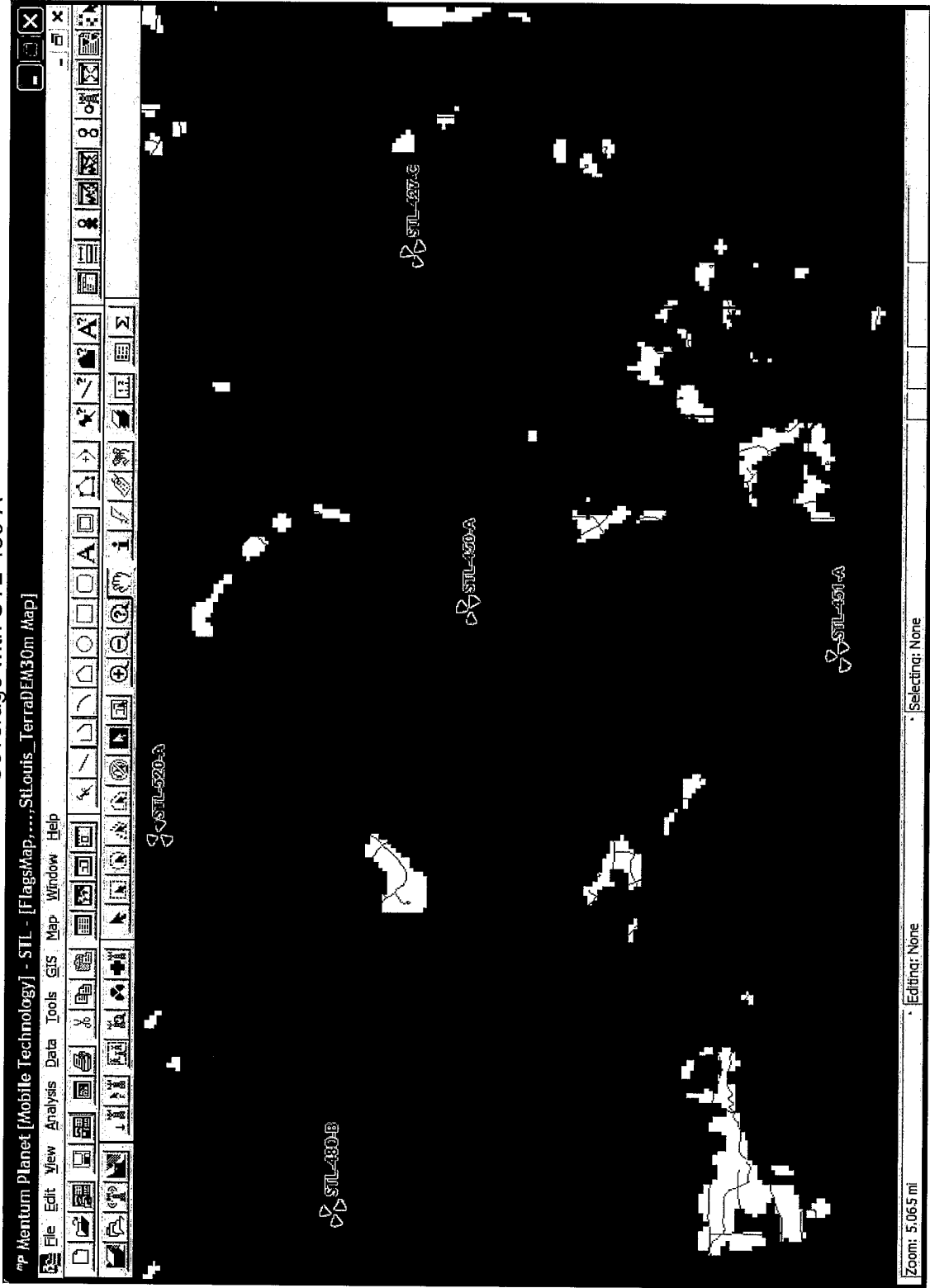




# Coverage without STL-519-C



# Coverage with STL-450-A



# Coverage without STL-450-A

