



## VII. C.

---

690 Chesterfield Pkwy W • Chesterfield MO 63017-0760  
Phone: 636-537-4000 • Fax 636-537-4798 • www.chesterfield.mo.us

---

July 13, 2007

Planning Commission  
City of Chesterfield  
690 Chesterfield Parkway West  
Chesterfield, MO 63017

The Planning Commission agenda for **July 23, 2007** will include the following item for your consideration:

**Saturn of West County (Long Road Crossing):** A Site Development Section Plan, Architectural Elevations, Landscape Plan and Lighting Plan for a 5.34 acre parcel zoned "PC" Planned Commercial located at the northwest corner of the intersection of Long Road and Chesterfield Airport Road.

Dear Planning Commission:

Paul Boyer, of Civil Engineering Design Consultants, Inc., has submitted, on behalf of Butler Investment Partnership, L.P., a Site Development Section Plan, Landscape Plan, Lighting Plan and Architectural Elevations for the above referenced project. The Department of Planning has reviewed this request and submits the following report.

### **BACKGROUND**

1. July 18, 1994 the City approved Ordinance Number 932 approving the preliminary plans for development within the "M3" Planned Industrial District.
2. January 19, 2000, the City rezoned the site "M3" Planned Industrial to "PC" Planned Commercial via Ordinance Number 1595.
3. June 7, 2004 the City approved Ordinance Number 2099 which amended the site's access to Long Road, increased the number of allowable buildings, provided for automatic power of review by City Council, required utilities to be installed underground and addressed the location of sleeves for future telecommunication services.
4. On June 27, 2005, the Planning Commission approved an Amended Site Development Concept Plan by a vote of 9-0.

5. May 7, 2007 the City approved Ordinance Number 2351 which amended the permitted uses allowed on the site.

### **SUBMITTAL INFORMATION**

The request is for a new 18,594 square foot Saturn automobile dealership and service center. The developer does not intend to have and Ordinance 2351 specifically prohibits body shops for this site. The exterior building materials will be comprised of brick masonry on the north elevation (facing Highway 64/40), split faced and smooth concrete block on the remaining elevations, and insulated glazing. The roof is proposed to be either a built up or EPDM membrane flat roof.

### **ARB RECOMMENDATIONS**

This project was reviewed by the Architectural Review Board on June 14, 2007. The ARB voted, by a vote of 3-1, to forward the Site Development Section Plan, Architectural Elevations, Lighting Plan and Landscape Plan to the Planning Commission with the following concerns:

1. The corporate logo feature shown on a red field on both the northern and southern elevations constitutes additional signage and is inconsistent with other developments in Chesterfield Valley. Additionally, the Board is concerned about the proposal to illuminate this area.
2. The location of and lack of screening for the overhead doors facing Highway 40.
3. The use of clay masonry brick instead of split face brick and recommended consideration of a more earth tone color palette.
4. The Board requested that Staff and Planning Commission review the proposed Lighting Plan.
5. The Board requested that Staff review the adequacy of site circulation for delivery trucks.

In response to the Architectural Review Board's concerns the petitioner has made the following changes:

1. The window box architectural element and curved parapet have been removed from the southern elevation.
2. The overhead doors have been changed to bi-fold glass doors.
3. Brick masonry will be used on the northern façade and split faced and smooth faced concrete, matching the brick, will be used on the remaining façades instead of aluminum panels.

Staff has reviewed the revised Lighting Plan as well as the revised Site Development Section Plan and finds that both plans have meet the concerns of the Architectural Review Board.

**DEPARTMENTAL INPUT**

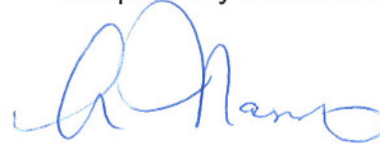
The submittal was reviewed and is in compliance with all City of Chesterfield ordinances. The Department of Planning requests approval of the Site Development Section Plan, Landscape Plan, Lighting Plan and Architectural Elevations.

Respectfully submitted,



Jennifer Yackley  
Project Planner

Respectfully submitted,



Aimee Nassif  
Senior Planner

Cc: City Administrator  
City Attorney  
Department of Public Works

Attachments:  
Site Development Section Plan  
Landscape Plan  
Lighting Plan  
Architectural Elevations

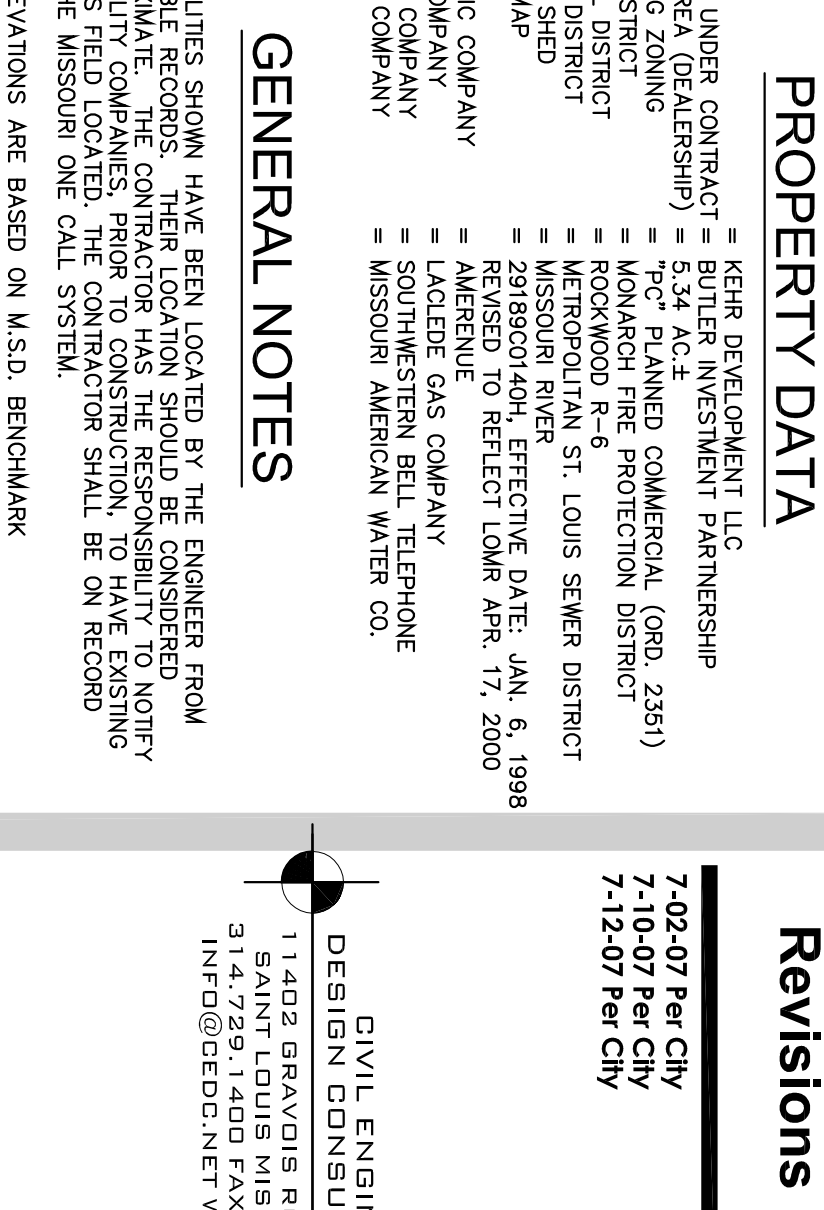
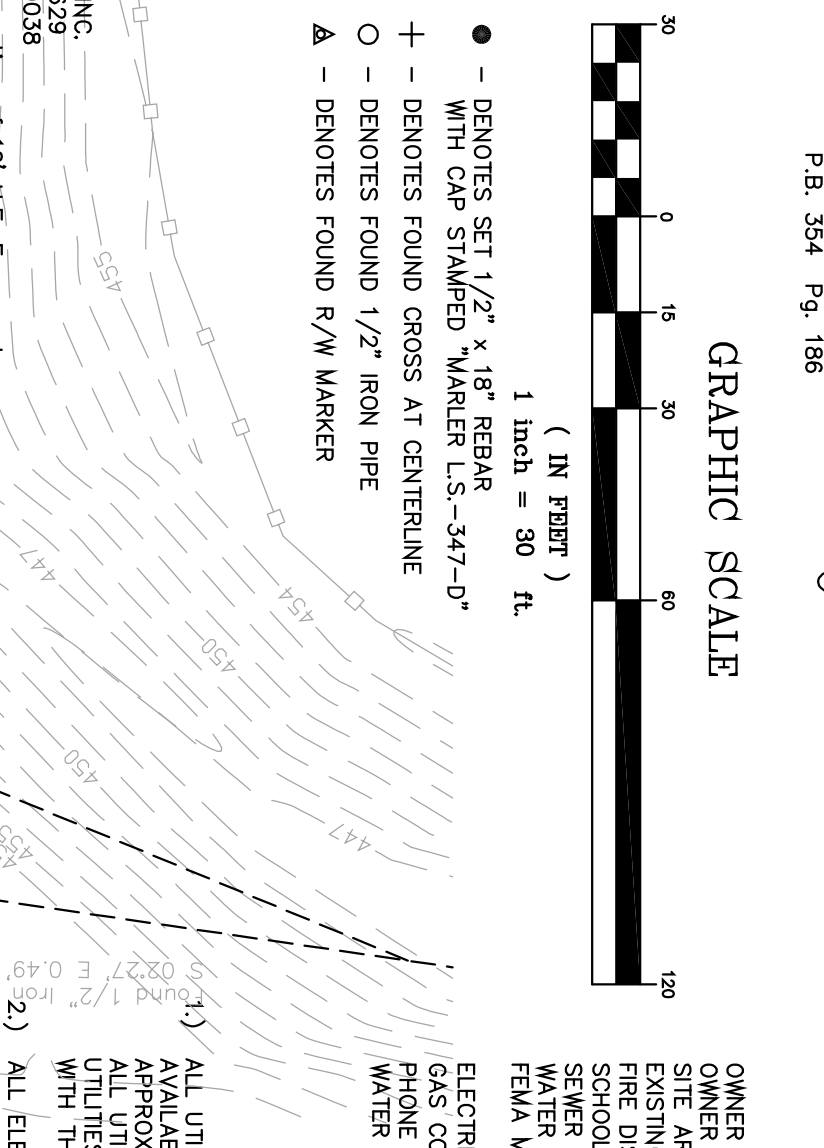
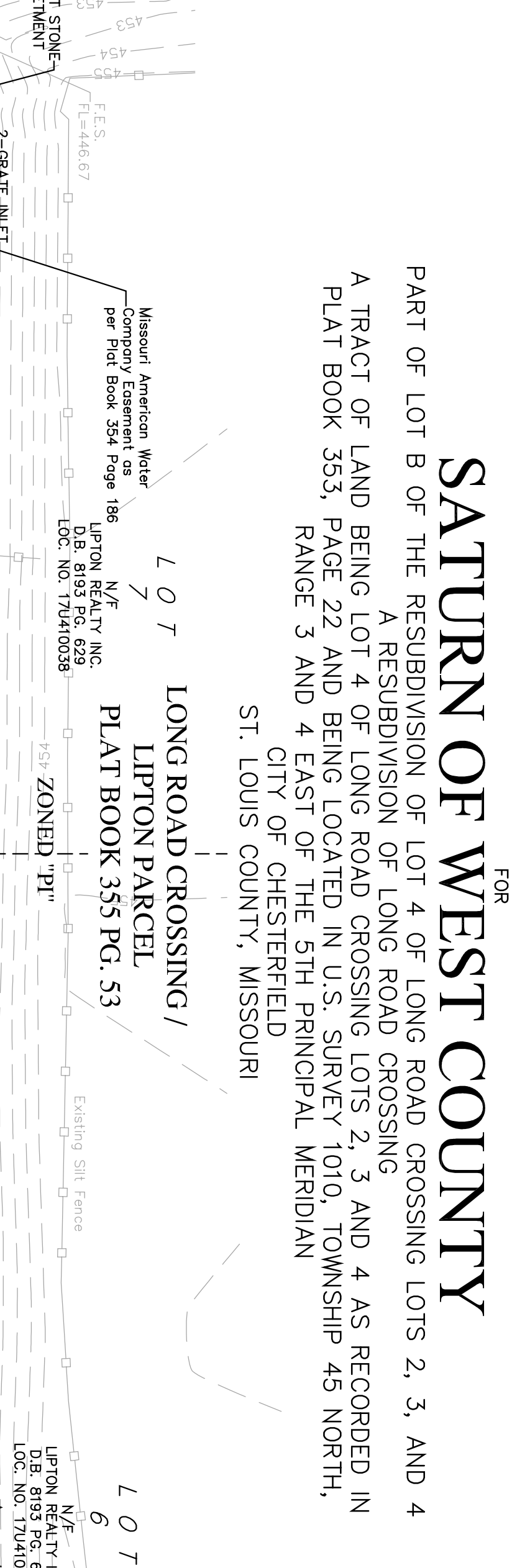
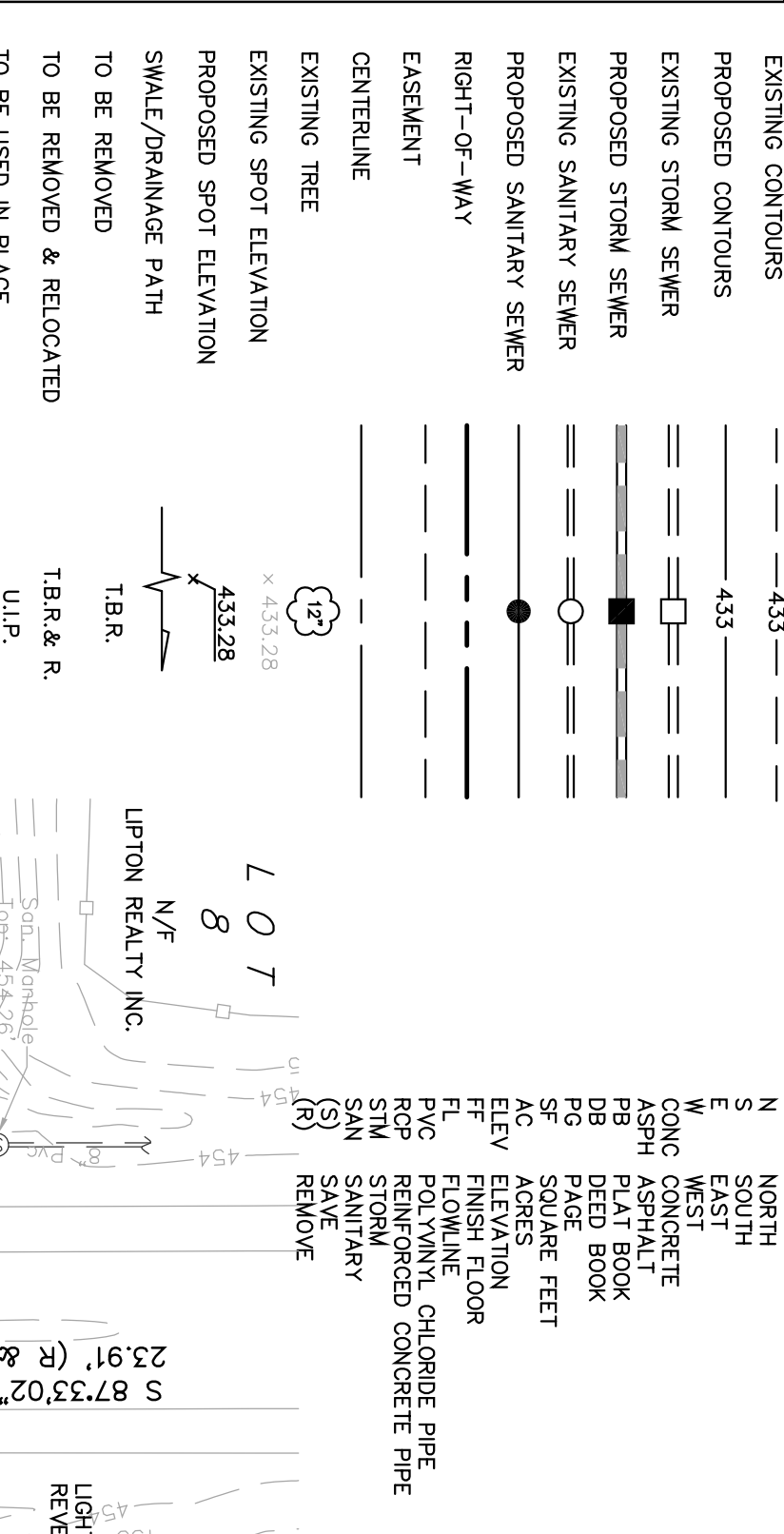
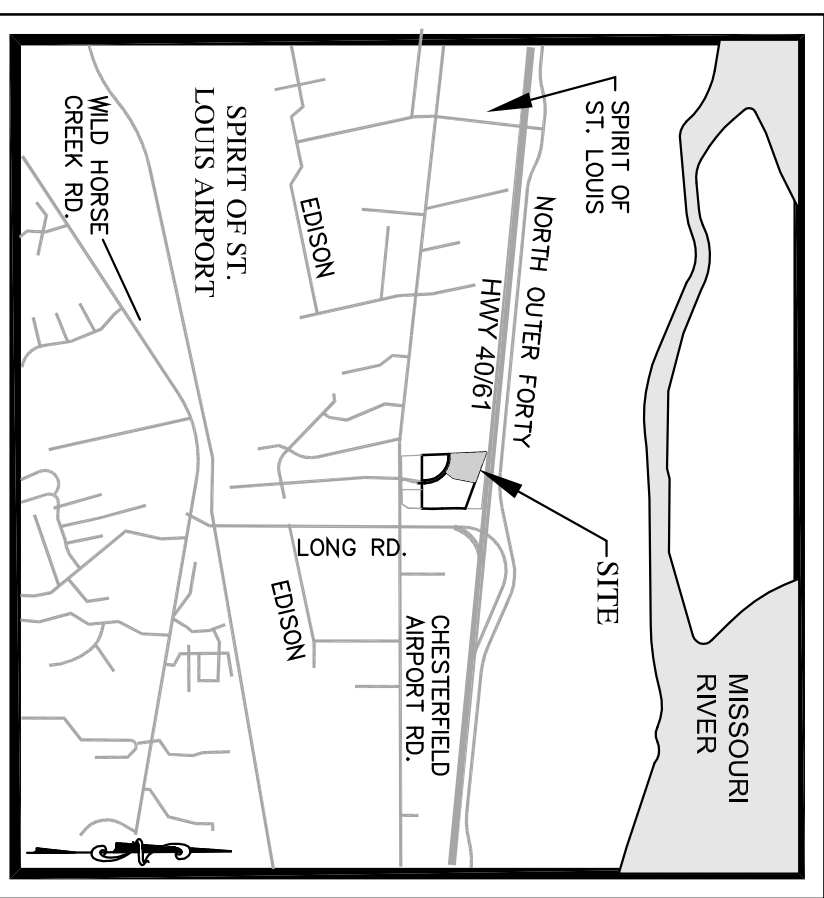
ABBREVIATIONS

- Legend list including symbols for Proposed Contours, Existing Storm Sewer, Proposed Storm Sewer, etc.

SITE DEVELOPMENT SECTION PLAN FOR SATURN OF WEST COUNTY

A TRACT OF LAND BEING PART OF LOT 4 OF LONG ROAD CROSSING LOTS 2, 3, AND 4 AS RECORDED IN PLAT BOOK 353, PAGE 22 AND BEING LOCATED IN U.S. SURVEY 1010, TOWNSHIP 45 NORTH, RANGE 3 AND 4 EAST OF THE 5TH PRINCIPAL MERIDIAN CITY OF CHESTERFIELD MISSOURI

Part of Lot B of the Resubdivision of Lot 4 of Long Road Crossing... A Tract of Land Being Lot 4 of Long Road Crossing Lots 2, 3 and 4 as Recorded in Plat Book 353, Page 22 and Being Located in U.S. Survey 1010, Township 45 North, Range 3 and 4 East of the 5th Principal Meridian City of Chesterfield Missouri.



LAND DESCRIPTION

A TRACT OF LAND BEING PART OF LOT 4 OF THE RESUBDIVISION OF LOT 4 OF LONG ROAD CROSSING LOTS 2, 3 AND 4 AS RECORDED IN PLAT BOOK 353, PAGE 22 AND BEING LOCATED IN U.S. SURVEY 1010, TOWNSHIP 45 NORTH, RANGE 3 AND 4 EAST OF THE 5TH PRINCIPAL MERIDIAN CITY OF CHESTERFIELD MISSOURI.

LEGAL DESCRIPTION

That certain parcel of land located in the City of Chesterfield, Missouri, being a portion of Lot 4 of Long Road Crossing Lots 2, 3 and 4 as recorded in Plat Book 353, Page 22 and being located in U.S. Survey 1010, Township 45 North, Range 3 and 4 East of the 5th Principal Meridian City of Chesterfield Missouri.

GEOTECHNICAL ENGINEER'S NOTE

Neither the geotechnical engineer nor the undersigned were involved with the preparation of any part of these plans. The engineer and geotechnical engineer are not responsible for the accuracy of the geotechnical information shown on these plans.

PREPARED FOR: Bauer & Associates, 12412 Powerscourt Drive, St. Louis, Missouri 63131. PREPARED BY: CIVIL ENGINEERING DESIGN CONSULTANTS, INC., 11422 GRAVITY ROAD SUITE 1300 SAINT LOUIS MISSOURI 63126.

PROPERTY DATA

- OWNER: LAND DEVELOPMENT, LLC. ENGINEER: SAVERS DESIGN INC. CONTRACTOR: SAVERS DESIGN INC.

GENERAL NOTES

- 1) ALL UTILITIES SHOWN HAVE BEEN LOCATED BY THE ENGINEER FROM APPROXIMATE INFORMATION. THE CONTRACTOR HAS THE RESPONSIBILITY TO VERIFY THE LOCATION OF ALL UTILITIES.

FLOOD NOTE

- 17) DESIGN FLOOD ELEVATIONS: GREEN AREA PLUS ALL NON-PAVED SPACES COVERED BY THE TOTAL AREA OF THE SITE WITHIN THE AREA COVERED BY THE FLOOD ELEVATION AS SHOWN BY THE CITY OF CHESTERFIELD.

FLOOD NOTE

- 18) NO PORTION OF THE SITE SHALL BE SO SITUATED THAT LIGHT IS CAST DIRECTLY ON ADJOINING PROPERTIES OR PUBLIC ROADS.

FLOOD NOTE

- 21) APPROVE OF THIS PLAN DOES NOT CONSTITUTE APPROVAL OF THE CITY OF CHESTERFIELD.

FLOOD NOTE

- 22) THIS DEVELOPMENT SHALL CONFORM TO US REQUIREMENTS FOR WATER RIGHT-OF-WAY OF LONG ROAD CROSSING.

FLOOD NOTE

- 24) FLOOD PROTECTION: THE ENGINEER HAS NOT CONDUCTED A FLOOD STUDY.

FLOOD NOTE

- 25) THE ENGINEER HAS NOT CONDUCTED A FLOOD STUDY.

FLOOD NOTE

- 26) THE ENGINEER HAS NOT CONDUCTED A FLOOD STUDY.

FLOOD NOTE

- 27) THE ENGINEER HAS NOT CONDUCTED A FLOOD STUDY.

SAVERS DESIGN INC. LANDSCAPE ARCHITECTURE logo and contact information.

CIVIL ENGINEERING DESIGN CONSULTANTS, INC. logo and contact information.

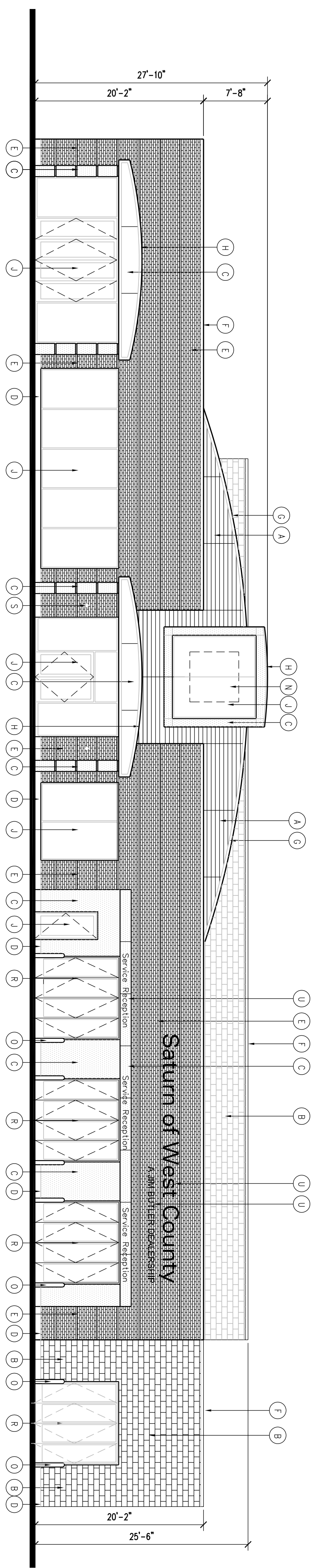
Site Development Section Plan For: Saturn of West County Longroad Crossing Chesterfield, Missouri

BAUER & ASSOCIATES ARCHITECTS logo and contact information.

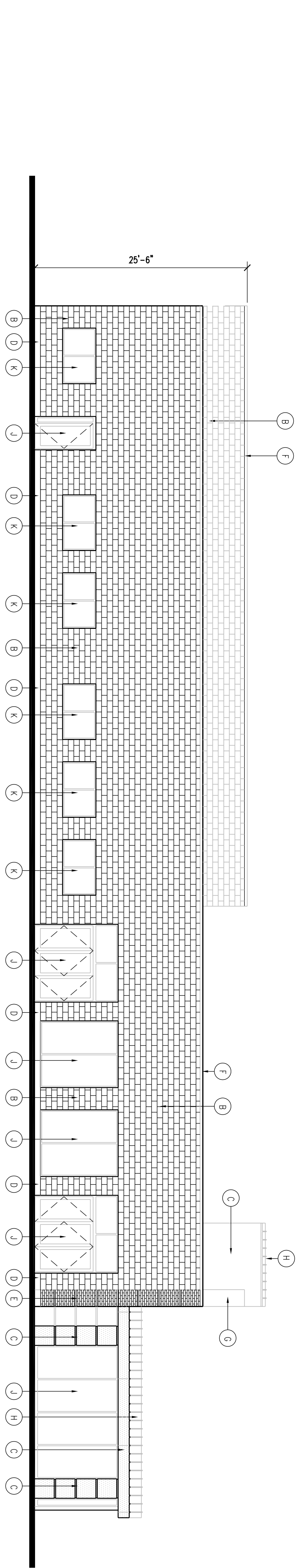
Michael E. Bauer, President, Job No. 0600, SD1 logo and contact information.

### EXTERIOR FINISH SCHEDULE

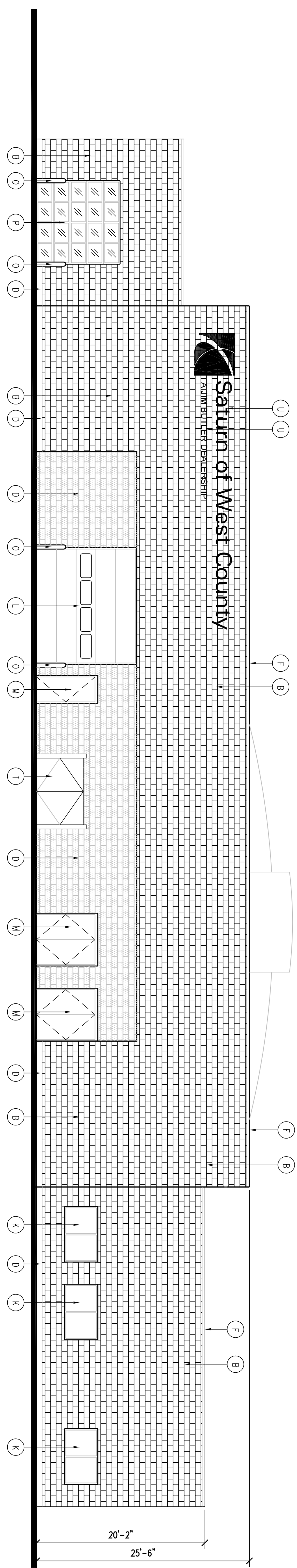
- A COMPOSITE METAL PANEL SYSTEM - COLOR AND SINE TO MATCH ALPOLIC ELM RED II.
- B INTERIALLY COLORED CONCRETE MASONRY UNIT (CMU) WITH MATCHING GROUT - CLASSIC COLORS #857 SHEEP'S WOOL.
- C COMPOSITE METAL PANEL SYSTEM - COLOR AND SINE TO MATCH ALPOLIC HARLINE ALUMINUM.
- D INTERIALLY COLORED CONCRETE MASONRY UNIT (CMU) WITH MATCHING GROUT - CLASSIC COLORS #857 SHEEP'S WOOL.
- E CLAY MASONRY UNIT (BRICK) WITH MATCHING GROUT - COLOR TO MATCH BENJAMIN MOORE CLASSIC COLORS #857 SHEEP'S WOOL.
- F PREFINISHED METAL CORING - COLOR TO MATCH ALPOLIC HARLINE ALUMINUM.
- G PREFINISHED METAL CORING - COLOR TO MATCH ALPOLIC ELM RED II.
- H PREFINISHED STANDING SEAM METAL ROOFING SYSTEM WITH CONCEALED FASTENERS - COLOR TO MATCH ALPOLIC Harline aluminum.
- J STOREFRONT GLAZING/FRAMING SYSTEM - 1" CLEAR INSULATED GLAZING IN CLEAR ANODIZED ALUMINUM FRAMES - "KAWNEER" 2250 S.S.C. OR EQUAL.
- K CLEAR INSULATED GLAZING IN PAINTED HOLLOW METAL FRAMES - PAINT COLOR TO MATCH BENJAMIN MOORE CLASSIC COLORS #857 SHEEP'S WOOL.
- L STEEL FRAME AND INSULATED STEEL OVERHEAD DOOR WITH CLEAR GLASS LITES - PAINT COLOR TO MATCH BENJAMIN MOORE #857 SHEEP'S WOOL.
- M INSULATED HOLLOW METAL VAN DOORS AND FRAMES - PAINT COLOR TO MATCH BENJAMIN MOORE CLASSIC COLORS #857 SHEEP'S WOOL.
- N INTERIOR SIGNAGE SUPPLIED BY OTHERS AND INSTALLED BY GENERAL CONTRACTOR - PROVIDE MINIMUM 5/8" EXTERIOR PLYWOOD BACKER BOARD AT ALL SIGNAGE.
- O 6" DIA. CONCRETE FILLED STEEL BOLLARD - PAINT COLOR TO MATCH OSHA SAFETY RED.
- P PREFINISHED ALUMINUM AND GLASS OVERHEAD DOOR WITH PAINTED STEEL FRAME - CLEAR ANODIZED ALUMINUM DOOR WITH CLEAR GLASS LITES, FRAME PAINT COLOR TO MATCH BENJAMIN MOORE CLASSIC COLORS #857 SHEEP'S WOOL.
- R PREFINISHED ALUMINUM AND GLASS BI-FOLD DOORS WITH PAINTED STEEL FRAME - CLEAR ANODIZED ALUMINUM DOOR WITH CLEAR GLASS LITES, FRAME PAINT COLOR TO MATCH BENJAMIN MOORE CLASSIC COLORS #857 SHEEP'S WOOL.
- S EXTERIOR WALL SCONCE LIGHT - TO MATCH BECA-US LOW VOLTAGE #1123 WITH GUARD - 4 3/4" DIAMETER WITH STAINLESS STEEL FINISH.
- T 8'-0" W X 6'-0" H TRASH ENCLOSURE.
- U EXTERIOR SIGNAGE SUPPLIED BY OTHERS AND INSTALLED BY GENERAL CONTRACTOR.



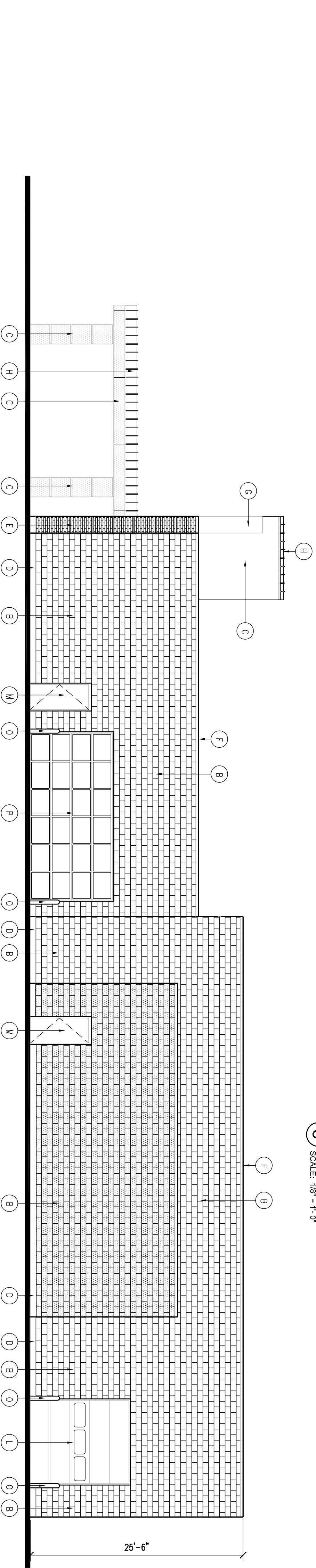
1 NORTH EXTERIOR ELEVATION  
SCALE: 1/8" = 1'-0"



2 EAST EXTERIOR ELEVATION  
SCALE: 1/8" = 1'-0"



3 SOUTH EXTERIOR ELEVATION  
SCALE: 1/8" = 1'-0"



4 WEST EXTERIOR ELEVATION  
SCALE: 1/8" = 1'-0"



PROPOSED SATURN  
DEALERSHIP  
Total Site - 232,925 SF  
Sidewalk - 1,660 SF  
Green Space - 15,283 SF  
Green Space = 32.5%

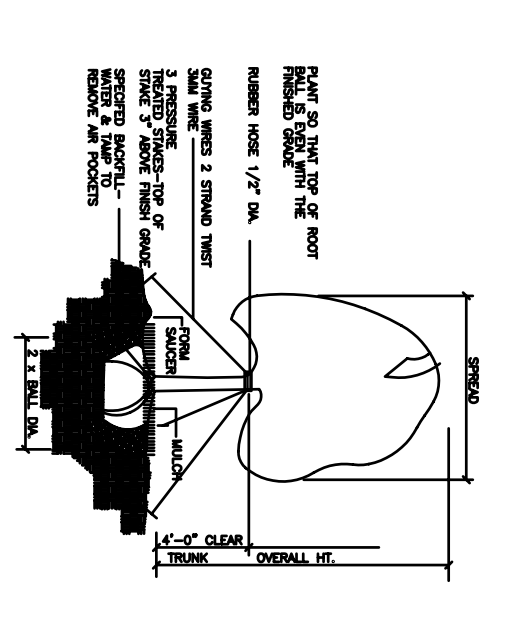
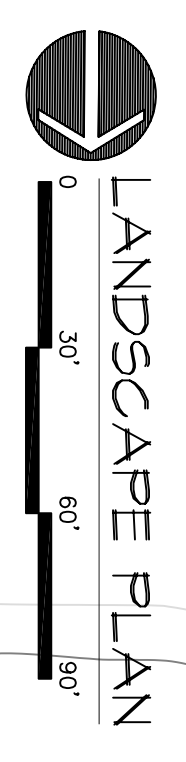
INTERSTATE 64  
HIGHWAY 40-61  
(VARIABLE WIDTH)

EXTERIOR PLANTING SCHEDULE

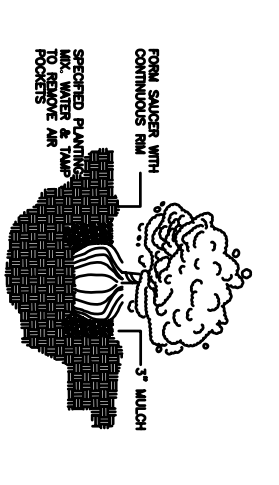
SYMBOL	QUANTITY	SCIENTIFIC NAME	COMMON NAME	PLANTING SIZE	METHOD	SPACING	COMMENTS	MATURE HEIGHT
A	47	CAMPANULA BELTULUS FASTIGIATA	COLIQUINA HORSEWEIL	12" CAL.	B-B	AS SHOWN	HATCHED FULL, HIGH BRANCHED STRAIGHT TRUNK	35'-40'
B	38	FRAXINUS AMERICANA AUTUMN PARLE	AUTUMN MAPLE / RED	12" CAL.	B-B	AS SHOWN	HATCHED FULL, HIGH BRANCHED STRAIGHT TRUNK	45-55'
C	1	TILIA CORNIFOLIA VERTICILLATA	GREENING LITTLE LEAF LINDEN	3" CAL.	B-B	AS SHOWN	HATCHED FULL, SINGLE LEADER	40-50'
D	1	ILEX X ANTIQUA VERTICILLATA	TOXIC HOLLY	6" HT	B-B	AS SHOWN	HATCHED FULL, SINGLE LEADER	40-50'
E	12	FRAXINUS STRYMONS	WHITE HOLEY	6" HT	B-B	AS SHOWN	HATCHED FULL, SINGLE LEADER	15-25'
F	16	FRAXINUS STRYMONS	WHITE HOLEY	2 1/2" CAL.	B-B	AS SHOWN	HATCHED FULL, SINGLE LEADER	15-25'
G	300	JANINUS SAKUNA BRACHYPODOR	BRACHYPODOR JUNIPER	3 1/2" CAL.	B-B	AS SHOWN	HATCHED FULL	
H	23	QUERCUS SPINOSA	RED BELLIED WOODPECKER	3 1/2" CAL.	B-B	AS SHOWN	HATCHED FULL	
I	40	MICANTHUS SINENSIS BRACHYPODOR	HAZEL GRASS	1 1/2" CAL.	AS SHOWN	AS SHOWN	HATCHED FULL	
J	30	MAGNOLIA BLACK TRUNKED GRAYE - 2' DBH	INSTALLED OVER 50' BY NEED BARRIER	VARIABLE	NOT	12" OC	HATCHED FULL	
K	1340	HEMOCALIS STELLA DORIS	STELLA DORIS DANIELLY	1 1/2" CAL.	CONT	12" OC	HATCHED FULL	
L	40	BIJUS MICROPHYLLA VINTER 60M	VINTER 60M BOWWOOD	3 1/2" CAL.	B-B	50' OC	HATCHED FULL	
M	1760	PACHYRANCHA TERMINALIS	PACHYRANCHA	2" POT	NOT	12" OC	HATCHED FULL	
N	65 CY	SHREDED BARK MULCH						
O	545 SF	SOD LAWN						
P	2470 SF	SEED LAWN						

GENERAL NOTES

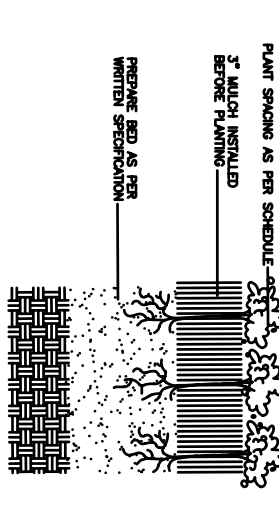
- SEE PLANTING SCHEDULES FOR PLANT SIZE, TYPE, METHOD AND SPACING. QUANTITIES SHOWN ARE APPROXIMATE ONLY - CONTRACTOR TO FIELD VERIFY ALL QUANTITIES AND REPORT ANY DISCREPANCIES IMMEDIATELY TO THE LANDSCAPE ARCHITECT.
- UNDERGROUND UTILITIES, STRUCTURES AND UTILITIES HAVE BEEN PLOTTED FROM AVAILABLE SURVEYS AND RECORDS AND THEREFORE THEIR LOCATIONS MUST BE CONSIDERED APPROXIMATE ONLY. IT IS POSSIBLE THERE MAY BE OTHERS THE EXISTENCE OF WHICH IS PRESENTLY NOT KNOWN OR SHOWN. IT IS THE CONTRACTOR'S RESPONSIBILITY TO DETERMINE THEIR EXISTENCE AND EXACT LOCATION AND TO AVOID DAMAGE THEREOF.
- CONTRACTOR TO VERIFY EXISTENCE OF ALL EXISTING UNDERGROUND UTILITIES PRIOR TO CONSTRUCTION AND MAKE REPAIRS TO ANY UTILITIES TO CONSTRUCTION WORK.
- ALL DISTURBED LAWN AREAS TO BE SEED OR SOD PER SPECIFICATIONS UNLESS OTHERWISE INDICATED.
- ALL LANDSCAPED AREAS TO BE AUTOMATICALLY IRRIGATED BY AN UNDERGROUND SPRINKLER SYSTEM.



TREE PLANTING



SHRUB PLANTING



SPRINKRCOVER

# MCGRAW-EDISON®



## GR GALLERIA ROUND

150 - 1000W

Metal Halide  
Pulse Start Metal Halide  
High Pressure Sodium

ARCHITECTURAL  
AREA LUMINAIRE



In all flat glass configurations.

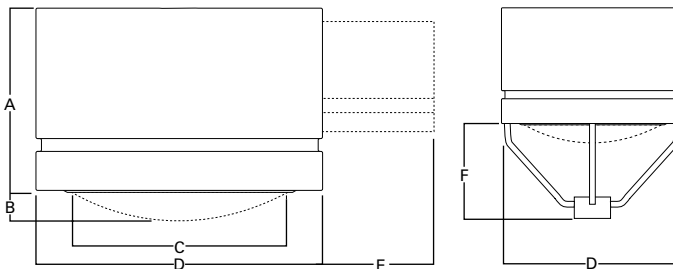
- Roll-formed aluminum housing with stamped reveal has interior-welded seams for structural integrity and is finished in premium TGIC polyester powder coat
- Ballast tray is hard-mounted to housing interior for easy access and cooler operation
- Long-life ballast core and coil
- Spun and stamped aluminum reflector in vertical lamp units, or hydroformed anodized aluminum reflector in horizontal lamp units. Rotatable optics standard
- Formed aluminum door for arm-mount fixture has retaining springs, while spider-mount unit has a heavy-duty hinge and captive retaining screws
- Flat or convex tempered glass lens
- U.L. listed for wet locations. CSA certified
- Approximate net weight: 86 lbs. (40 kgs.)

### DESCRIPTION

The Galleria Round combines beauty and versatility to make it the optimum choice in today's energy- and design-conscious environment. An aesthetic reveal in the roll-formed aluminum housing carries on the Galleria family look while a variety of mounting options and lamp wattages provide maximum flexibility.



### DIMENSIONS



Fixture	A	B	C	D	E	F
GRM 150-1000W	18 1/4" [464mm]	3 1/2" [89mm]	19 3/4" [502mm]	24 1/2" [676mm]	6" or 14" [152mm] or [356mm]	16" [406mm]
GRL 1000W	19 3/4" [502mm]	4 1/2" [108mm]	25 5/8" [651mm]	32 15/16" [837mm]	6" or 14" [152mm] or [356mm]	19 3/4" [502mm]

### ORDERING INFORMATION

SAMPLE NUMBER: GRM-AM-250-MH-120-FT-FG-DP-L

GRM	AIR	400	MH	277	VARIOUS	FG	GM
-----	-----	-----	----	-----	---------	----	----

Product Family	Lamp Wattage <sup>3</sup>	Lamp Type	Voltage <sup>9</sup>	Distribution	Lens Type	Colors <sup>15</sup>	Options & Accessories
GRM=Galleria Round Medium	150=150W	MH=Metal Halide	120=120V	1F=Type I Formed <sup>12</sup>	FG=Flat Glass <sup>14</sup>	BZ=Bronze	(See Below)
GRL=Galleria Round Large	175=175W	MP=Pulse Start Metal Halide (CWA)	208=208V	2F=Type II Formed	SG=Sag Glass	AP=Grey	
	250=250W	HPS=High Pressure Sodium	240=240V	3F=Type III Formed		BK=Black	
	320=320W <sup>4</sup>	MPE=Electronic Powered Pulse Start Metal Halide <sup>7</sup>	277=277V	FT=Forward Throw Vertical		WH=White	
	350=350W <sup>4</sup>	MPD=Electronic Dimmable Electronic Powered Pulse Start Metal Halide <sup>7,8</sup>	480=480V	AR=Area Round		DP=Dark Platinum	
	400=400W <sup>5</sup>		MT=Multi-Tap <sup>10</sup>	AS=Area Square		GM=Graphite Metallic	
	1000=1000W <sup>6</sup>		TT=Triple-Tap <sup>10</sup>	3V=Type III Vertical			
			E1=Electronic 120-277V <sup>11</sup>	RW=Rectangular Wide <sup>13</sup>			
			E2=Electronic 200-277V				

E.P.A. Single Medium Fixture (without arm): 1.7 / Single Large Fixture (without arm): 2.5  
Spider Mount Medium: 2.0 / Spider Mount Large: 2.8

**Options <sup>16</sup>**  
 F=Single Fuse (120, 277 or 347V)  
 FF=Double Fused (208, 240 or 480V)  
 EM=Quartz Restrike with Delay (Hot Restrike Only)  
 Q=Quartz Restrike (Hot Restrike Only)  
 R=NEMA Twistlock Photocontrol Receptacle  
 HS=House Side Shield <sup>17</sup>  
 VS=Vandal Shield <sup>18</sup>  
 L=Lamp Included

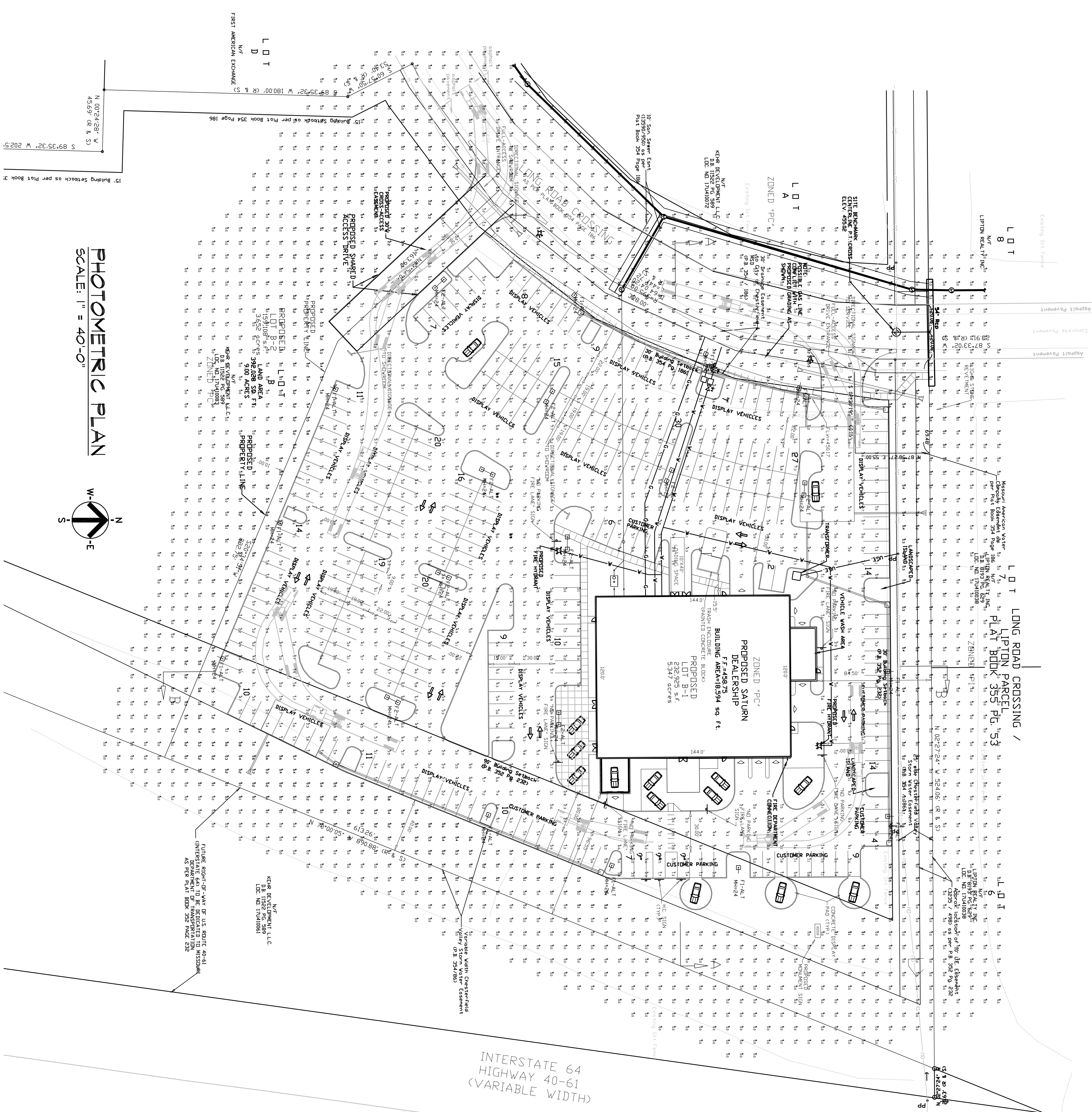
**Accessories <sup>19</sup>**  
 MA1061=House Side Shield—Medium Housing (Field Installed)  
 MA1062=House Side Shield—Large Housing (Field Installed)  
 OA/RA1016=Photocontrol—Multi-Tap  
 OA/RA1027=Photocontrol—480V  
 OA1201=NEMA Twistlock Photocontrol—347V  
 MA1025XX=14" Arm for Square Pole. 1.0 EPA  
 MA1026XX=6" Arm for Square Pole. 0.5 EPA  
 MA1027XX=14" Arm for Round Pole. 1.0 EPA  
 MA1028XX=6" Arm for Round Pole. 0.5 EPA  
 MA1029XX=Wall Mount Bracket with 10" Arm  
 MA1010XX=Single-Arm Tenon Adapter for 3 1/2" O.D. Tenon  
 MA1011XX=2 @ 180° Tenon Adapter for 3 1/2" O.D. Tenon  
 MA1012XX=3 @ 120° Tenon Adapter for 3 1/2" O.D. Tenon  
 MA1013XX=4 @ 90° Tenon Adapter for 3 1/2" O.D. Tenon  
 MA1014XX=2 @ 90° Tenon Adapter for 3 1/2" O.D. Tenon  
 MA1015XX=2 @ 120° Tenon Adapter for 3 1/2" O.D. Tenon  
 MA1016XX=3 @ 90° Tenon Adapter for 3 1/2" O.D. Tenon  
 MA1017XX=Single-Arm Tenon Adapter for 2 3/8" O.D. Tenon <sup>12</sup>  
 MA1018XX=2 @ 180° Tenon Adapter for 2 3/8" O.D. Tenon <sup>12</sup>  
 MA1019XX=3 @ 120° Tenon Adapter for 2 3/8" O.D. Tenon <sup>12</sup>  
 MA1045XX=4 @ 90° Tenon Adapter for 2 3/8" O.D. Tenon <sup>12</sup>  
 MA1048XX=2 @ 90° Tenon Adapter for 2 3/8" O.D. Tenon <sup>12</sup>  
 MA1049XX=3 @ 90° Tenon Adapter for 2 3/8" O.D. Tenon <sup>12</sup>

**NOTES:** 1 Arm not included. See Accessories. 2 Arm length varies based on housing size: 11-1/2" for GRM and 14" for GRL. 3 150W medium-base socket. 175W-1000W mogul-base. 4 Pulse Start Metal Halide only. 5 Requires reduced envelope ED-28 lamp when used with GRM housing and flat glass vertically lamped optics. 6 1000W in GRM housing requires reduced envelope BT-37 lamp. 7 Only available in 250-400W Pulse Start Metal Halide and vertical optics. Must specify E1 or E2 voltage. 8 Provides 0-10V DC low voltage, leads used in dimming control. 9 Product also available in non-US voltages and 50Hz for international markets. Consult factory for availability and ordering information. 10 Multi-Tap ballast is 120/208/240/277V wired 277V. Triple-Tap ballast is 120/277/347V wired 347V. 11 250W only. 12 Medium housing fixture only. 13 RW optic not available with flat glass. 14 1000W GRL with flat glass requires BT-37 lamp and is not available in AS, RW or 3V distributions. 15 Other finish colors available, including a full line of RAL color matches. Consult your Cooper Lighting Representative. 16 Add as suffix in the order shown. 17 House side shield available on 2F, 3F, FT and all vertically lamped distributions when combined with sag glass. 18 Arm mount only, 400W Maximum. 19 Order separately, replace XX with color suffix. 20 Specifications and dimensions subject to change without notice.

Numeric Summary		Calc Type	Units	Avg	Max	Min	Avg/Min	Max/Min
Label	SITE	Illuminance	FC	412	8.9	0.7	5.89	12.71
Symbol	SPILL LIGHT	Illuminance	FC	015	5.8	0.0	NA	NA

Luminaire Schedule		Label	Arrangement	Lumens	LLF	Description
Symbol	Qty	F1-ALT	SINGLE	33100	1.000	GSM-AM-400-MH-XX-SL-FG-XX-X
	9	F2-ALT	BACK-BACK	36000	1.000	GSM-AM-400-MH-MT-AS-FG



Construction Documents For:  
**Saturn of West County**  
 Longroad Crossing  
 Chesterfield, Missouri



Michael E. Bauer  
 President  
 12412 Fountains - Suite 275  
 Scotti Oak, Missouri 63131  
 Office: 314-855-9000 Fax: 314-855-0009  
 Mobile: 314-292-8273

Job No. 06-049  
**PH-1**  
 Date: 7-09-07