



## Memorandum Department of Planning & Public Works

**To:** Planning and Public Works Committee  
**From:** Shawn Seymour, Senior Planner  
**Date:** 07/18/2011  
**RE:** Chesterfield Historical Commission: City Owned Artifacts Loan to St. Louis Community College – Wildwood

### Summary

In April of 2011, the Chesterfield Historical Commission (CHC) was approached by members of the St. Louis Community College – Wildwood (Community College). The representatives of the Community College inquired into the possibility of a loan relating to historical artifacts that the City has in its possession. On April 13, during the meeting of the CHC, representatives of the Community College gave a brief presentation of what they do for the community and their need of historical artifacts for use in study. It was noted at this meeting that prior to the City obtaining its own collection of artifacts, that the University of Missouri – St. Louis (UMSL), had donated a number of historical artifacts for display at Chesterfield City Hall. Many of these artifacts are still on display at City Hall.

At the April CHC meeting, a motion was made and approved for the Archeology Sub-Committee of the CHC to establish a collection of artifacts owned by the City that would be suitable for classroom study and lab use. It was also requested at this meeting that the Sub-Committee draft a loan agreement similar to the one used by the City and UMSL and to present it to the Planning & Public Works Committee for approval. In May, the Archeology Sub-Committee established a collection of artifacts suitable for use by the Community College and drafted a loan agreement for the review of City Council.

Attached please find a draft copy of the loan agreement and a letter from the Chair of Humanities and Social Sciences at St. Louis Community College - Wildwood.

Respectfully submitted,

Shawn P. Seymour, AICP  
Senior Planner

CC: Michael G. Herring, City Administrator  
Rob Heggie, City Attorney  
Michael O. Geisel, Director of Planning & Public Works  
Aimee Nassif, Director of Planning & Development Services



---

690 Chesterfield Pkwy W • Chesterfield MO 63017-0760  
Phone: 636-537-4000 • Fax 636-537-4798 • [www.chesterfield.mo.us](http://www.chesterfield.mo.us)

---

### **Artifacts Loan Agreement**

The City of Chesterfield hereby agrees to loan the below listed items for a period of five (5) years to the St. Louis Community College – Wildwood. The artifacts are to be used as a teaching resource and lab materials. This loan agreement may be extended with agreement by both parties.

Name	Number of Artifacts	Markings
Bones in Zip Lock Bag	30	
Adze	13	Location of origin found on some pieces
Axe	3	
Points	8	Location of origin and dates found on some pieces
Smooth Stone (oxidized iron ore)	1	
Small Piece of Pottery	1	
Stone Tools	6	

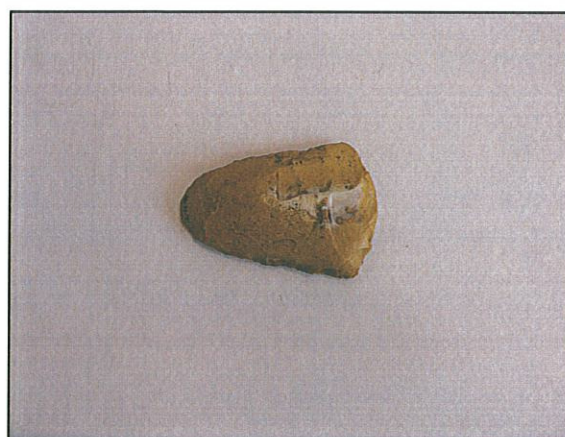
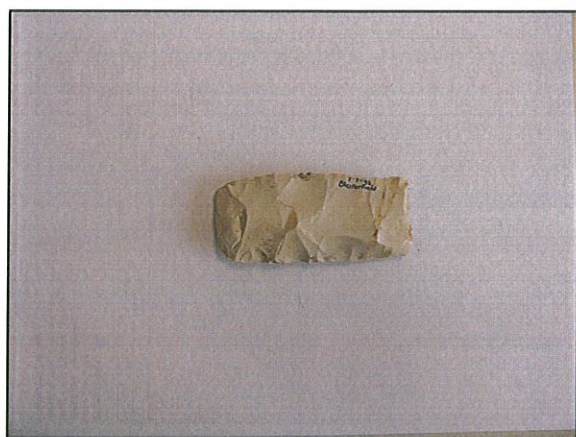
Attached: Photographs of each item.

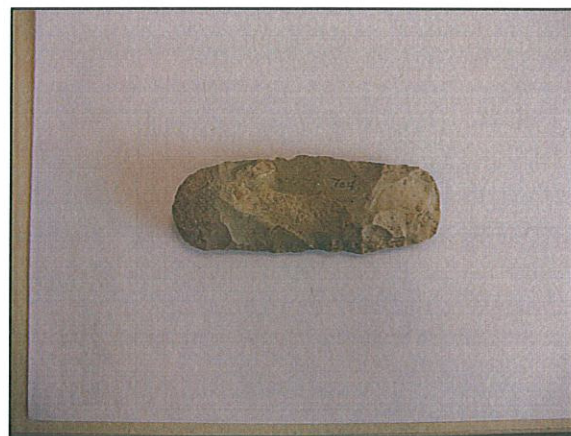
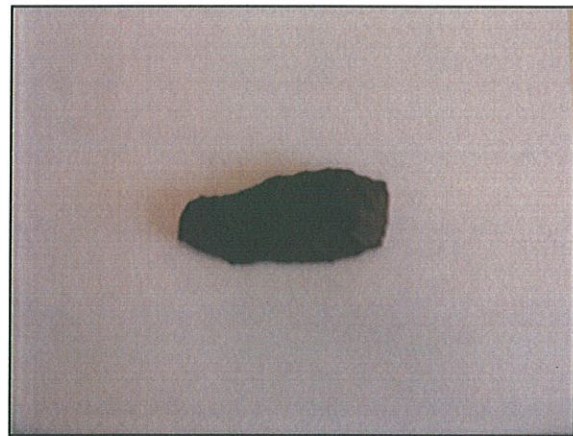
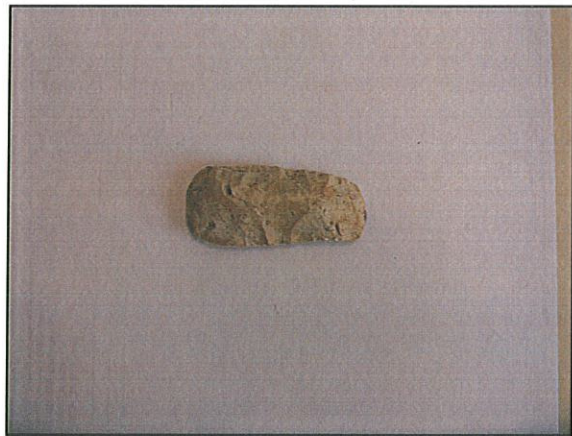
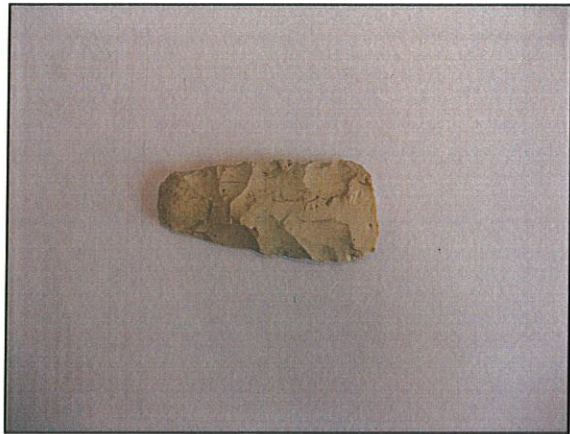
---

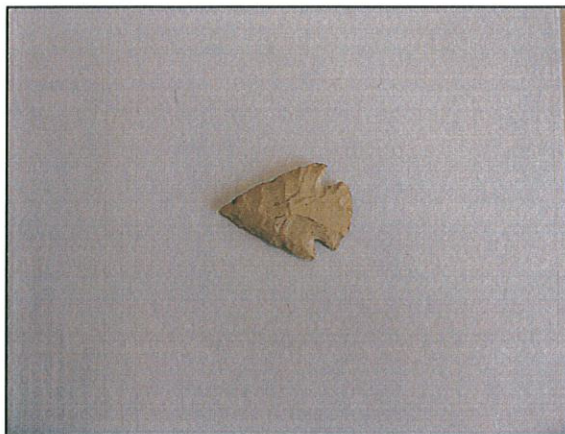
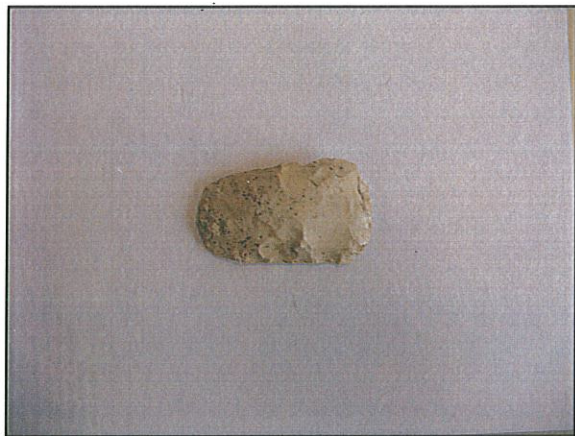
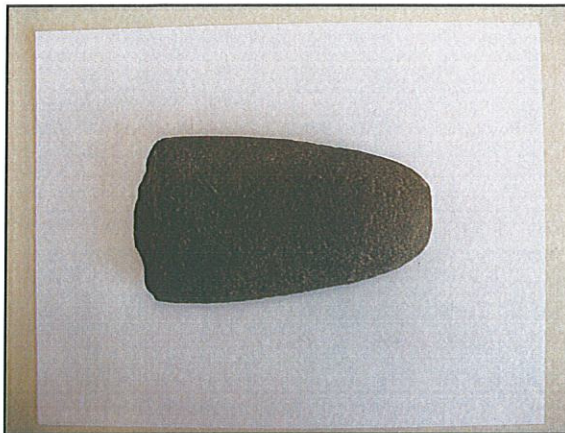
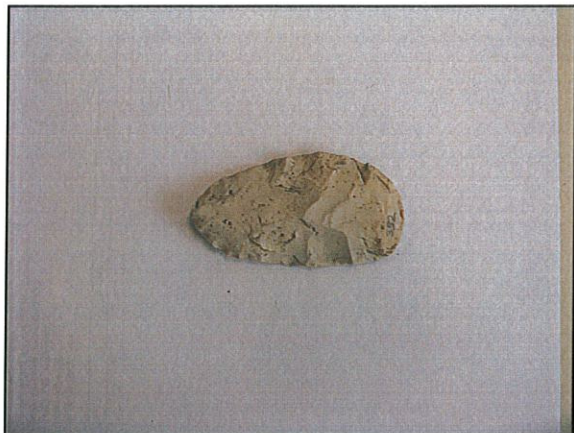
Michael G. Herring  
City Administrator  
City of Chesterfield, Missouri

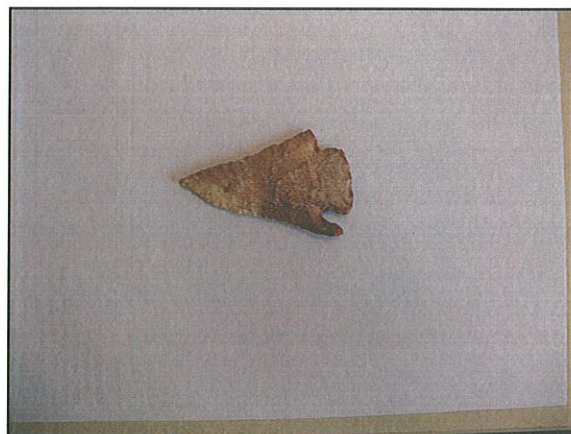
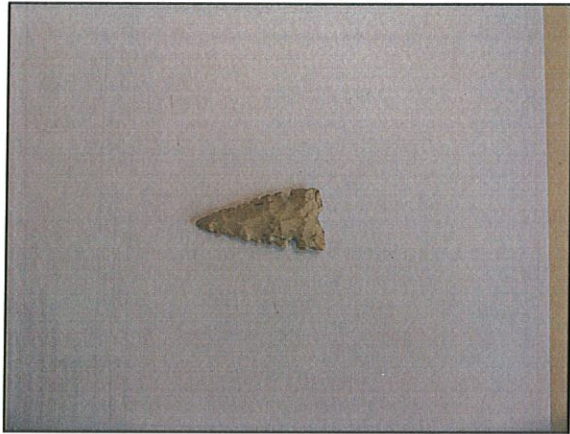
---

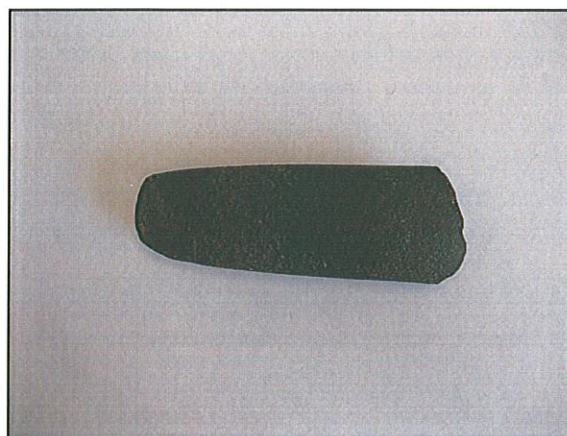
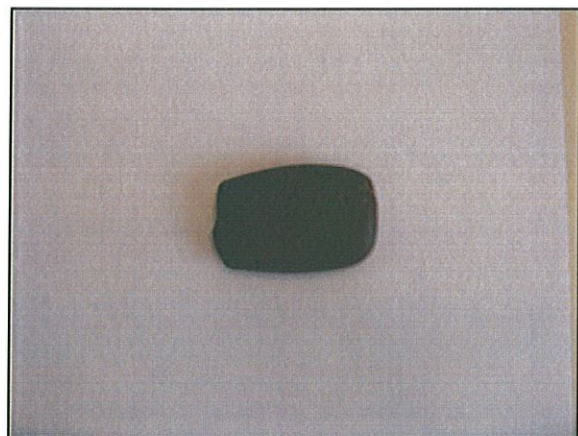
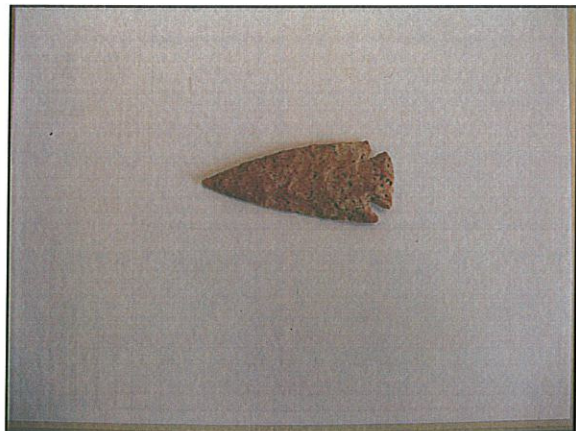
John Glen  
Chair of Humanities & Social Sciences  
St. Louis Community College – Wildwood

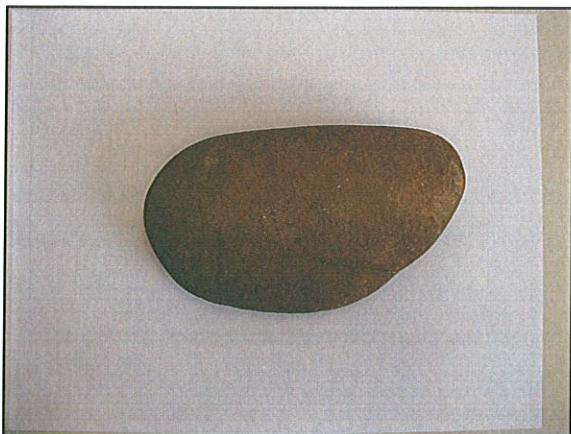
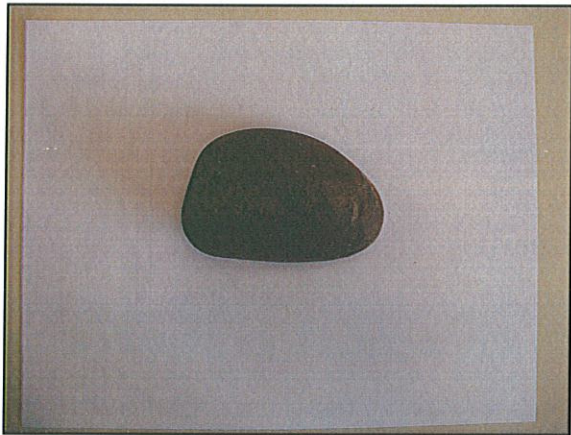
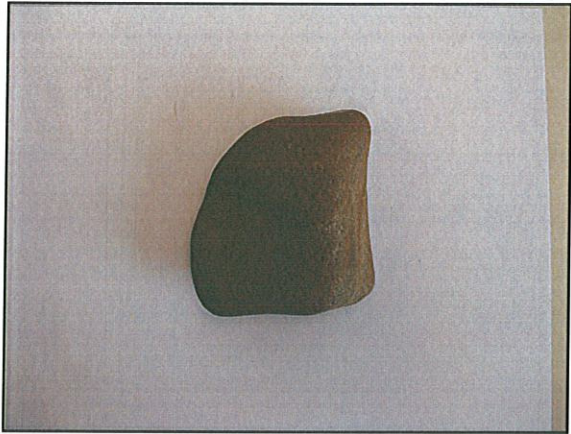
















Shawn Seymour, AICP  
Senior Planner  
City of Chesterfield  
690 Chesterfield Parkway West  
Chesterfield, MO 63017

May 16, 2011

Dear Mr. Seymour,

On behalf of Wildwood Community College, it is a pleasure to thank you and officially accept the loan of American Indian artifacts from the City of Chesterfield Historical Commission on 05/01/2011 in support of the Anthropology/Archaeology program being established by Dr. Deborah Ruscillo Cosmopoulos.

Your loan of artifacts will help establish a collection of archaeological student lab materials at the Wildwood Campus of St. Louis Community College. The artifacts will allow students to participate in workshops designed to collect and/or organize data from human and non-human materials in order to test hypotheses about the evolutionary process, and to work with artifacts to attain a better understanding of their manufacture and use.

We understand that this is a five year loan starting on the above acceptance date and that it may be extended with agreement from both parties.

We are grateful for your interest in and support of college programs.

Sincerely,

A handwritten signature in black ink, appearing to read 'John Glen'.

John Glen, Ph.D.

Chair of Humanities and Social Sciences  
St. Louis Community College - Wildwood