

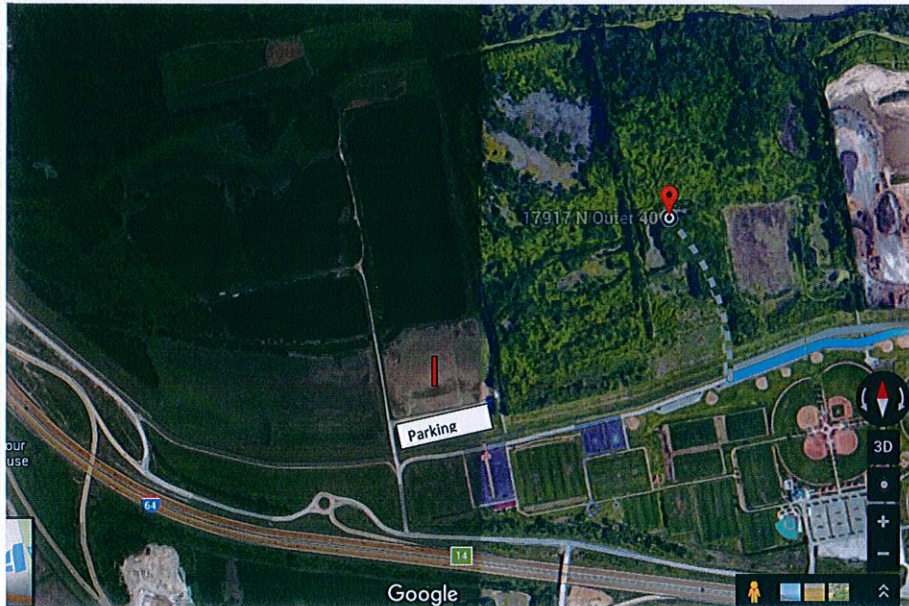
Memorandum



5.

To: Mike Geisel, Director of Public Services,
Acting City Administrator
From: Tom McCarthy
Director of Parks, Recreation and Arts
Date: 7/7/2016
Re: Cricket Pitch

Mike, I have received approval from the Monarch Levee District for the opportunity to put in a cricket pitch if we so desire on the north side of the Monarch Levee just north of the A3 & A4 fields. See the attached map for general location. The pitch would be 4" deep, 12' wide and 100' long with a gravel base of 6-10". We would then cover the pitch with a plastic grass.



Budget numbers

Concrete	1440 sq ft x \$6.25 a sq ft	= \$ 9,000
Grass carpet	1440 sq ft x \$1.25 a sq ft	= \$ 1,800
Contingency	10%	= \$ 1,080
Total		= \$11,880

This is just an update so this is for informational purposes only. I am still working with the cricket group to see if they are truly interested in locking into an agreement for the field usage prior to making any recommendations to the Committee.