

Memorandum

#3

To: Mike Geisel, City Administrator
From: Tom McCarthy
Director of Parks, Recreation and Arts
Date: 6/17/2021
Re: Kilo Family Art Donation



At our June 16, 2021 Parks, Recreation and Arts Citizens Advisory Committee meeting Rob Kilo presented the following piece of artwork named the *Hartsfield-Portal to Metamorphosis* that the Kilo family would like to donate to the City in memory of his mother for a five-year term. The committee reviewed this artwork and voted unanimously to move it forward to the Parks, Recreation and Arts Committee of Council for their recommendation. As you will see there is a substantial amount of additional ideas pertaining to the grounds around the actual art piece. The only thing that was voted on last night and approved was the actual artwork and the location where they would like it installed. Preferred location for the piece is at the entrance to the new section of the Riparian Trail at Lydia Hill. The Parks Department will install the footing for the art piece and assist the artist with the installation after the Riparian Trail is completed with council approval. Rob is fully aware the additional concept, benches, gravel sitting area, stone wall and additional plantings have no approval or funding and will only be added if and when he is able to raise the required funds to cover the entire cost.

I would like to request that this information be forwarded to the Parks, Recreation and Arts Committee of Council for their review and direction.

I have attached the packet of information Rob presented to the committee for your review along with the city policy on art work installation that will be installed for over 90 days.

CITY OF CHESTERFIELD
POLICY STATEMENT

Parks, Recreation and Arts

NO. 4

SUBJECT Art Sculpture Review and Placement

Index PRA

DATE March 20, 2017

DATE

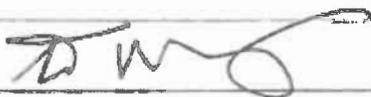
ISSUED

REVISED

POLICY

Proposed art work and placement for long term installation over nine months should first be reviewed by the Parks, Recreation and Arts Citizens Advisory Committee and a recommendation should move to the Parks, Recreation and Arts Committee of Council. After a review and recommendation from the Parks, Recreation and Arts Committee of Council the recommendation should move forward to the full Council for review and approval.

RECOMMENDED BY:



Department Head

3-13-2017

Date

APPROVED BY:

City Administrator

Date



City Council (if applicable)

3/20/2017

Date

Monarch Grove along the Riparian Trail

PROPOSAL ONLY for discussion purposes.

Not approved for unapproved circulation unless by Director of Parks.

'Monarch Grove along the Riparian Trail' will be a natural, native-inspired area on the North side of August Hill Drive by the new Riparian Trail extension. The grove will be a meeting place, rest stop, reflection area, and midway 'trail head' for the upcoming 2021 Riparian Trail extension with construction for phases two and three. The proposed grove is in Ward II.

The grove area will be a registered Monarch Waystation to signify Chesterfield's contribution to monarch conservation and assistance to pollinators.

Proposed site plan, see attachments for pictures and examples;

The grove would be a ~24' circle area on the 'side' of the Riparian Trail extension near the August Hill Drive crosswalk and start of the new trail. The upcoming approved phases of construction could level out and grade the area, including leveling the grade at least 20' to the left to prevent future erosion, and prepare for the grove build out and installation.

Long stone wall blocks in approximately three layers stepped around the back side of the graded hillside 'circle.' The tallest area would still be functional to sit on, walk on, and as a back drop, but not very high vertically in height, so not a safety issue. The stone walls would step down around the sides of the circular area, providing a cut out area in the sloped hill. The second tier of the wall block layers, which would be at 'sitting height' to encompass a natural seating area, would encompass the largest section length of each side down the stepped wall. This wall would last forever and low maintenance.

Stone block benches. 5 feet in length to accommodate 2 people seated with their personal belongings such as phone, water bottle, snacks, etc. Bench height will be equal to the current benches along the trail. Propose two separated stone block benches that would be placed inward from the outer edge of the circle so that it could be sat on from any direction. These benches would last forever, low maintenance, and meet ADA guidelines.

The grove area would start ~4-5 sidewalk slabs to the left of the trail's August Hill Drive crosswalk. The grove area would start immediately off the August Hill Drive sidewalk with an entry of pavers or concrete slab and then transition into the crushed stone/gravel. There would be one 'entrance' off the sidewalk, and one 'entrance' directly from the trail as it goes up/down the hill. The entrance directly off the hill could be pavers or a continuation of the asphalt trail up until the crushed stone/gravel of the grove area.

Statue: 'Portal to Metamorphosis' statue by artist Glory Hartsfield. Statue to be purchased by the Kilo family and loaned to the City for 5 year increments. Their plan is to loan the statue ongoing forever. The ~9' statue would be on a 2' tall circular concrete base. The statue would

use solar-powered LED lighting with a timer to ensure it's only lit based on timing recommendations from the City Parks department. The statues will never be lit throughout entire night. The Kilo family is interested in the City pursuing statue approvals as soon as possible. This statue is already an approved statue in the 'Sculpture on the Move' program.

The statue/base would be in the back side of the circle, not necessarily in the center of the whole 'circle'. Around the base would be another extended circle equally around it a few feet wide with native flowering plantings that are appropriate for the area. It's possible to have those native plantings just toward the front of the statue to reduce upkeep/maintenance.

Along the back side of the circle where the 'stone wall' is built, there would be a few larger plantings, and a proposal for numerous native pollinator plantings around those. These plantings would be low maintenance and would be the only plantings designated on the outer core of the grove. They could include the possibility of one the following:

- 1) Preferred option: Sassafras trees which would grow to provide shade over the back curved wall.
- 2) Blue spruce evergreens planted ~ 10 feet apart so that the statue can be easily seen coming down the trail.
- 3) Brightly colored ornamental grass such as Shenandoah switch grass.

There would be a sign similar to the 'StoryBook Walk' signage which would include a map of the entire Riparian Trail, information on pollinators, and QR codes for key information. An official 'Monarch Waystation' metal sign will be posted in the area or on the backside of the other sign. Budget of \$41 for Monarch Waystation application fee of \$16 and Monarch Waystation 9" x 12" aluminum sign cost of \$25. <https://www.monarchwatch.org/waystations/>.

The trashcan and updated smaller DOGI POT dog bag dispenser would be near the solar powered August Hill streetlight & Riparian Trail extension sign, not right next to the grove.

Goal is to partner with a company or companies for 'sponsorship' to fund the majority of the grove project, with future opportunities to continue the support maintaining the grove.

Request for Parks department to seek budget estimates, internal discussions, planning, approvals, etc. in the near term for development upon completion of the 2021 Riparian Trail extension.

Potential native milkweed plantings within the native prairie landscape hill. The immediate area on the hillside slope would provide a good area for milkweed plantings as it is an open field, near a water source, etc. The Monarch Waystation designation allows for aggregate of multiple sites to be referenced for application submission.

This is a proposal only for discussion purposes.

Submitted by Rob Kilo, 16734 Benton Taylor Drive, Chesterfield, MO 63005. 314-616-5456

Public Works and Capital Projects March 15, 2021

Riparian Trail – In 2021 the City of Chesterfield will construct Phases two and three of the Riparian Trail. The Riparian Trail extension will begin at August Hill Drive, head north through Central Park, across Wild Horse Creek Road, and terminate at Old Chesterfield Road. This \$1.5 million project will be partially funded through a \$1 million grant acquired through the Transportation Alternatives Program (TAP). All remaining project costs outside the grant will be funded through the Chesterfield Valley Transportation Development

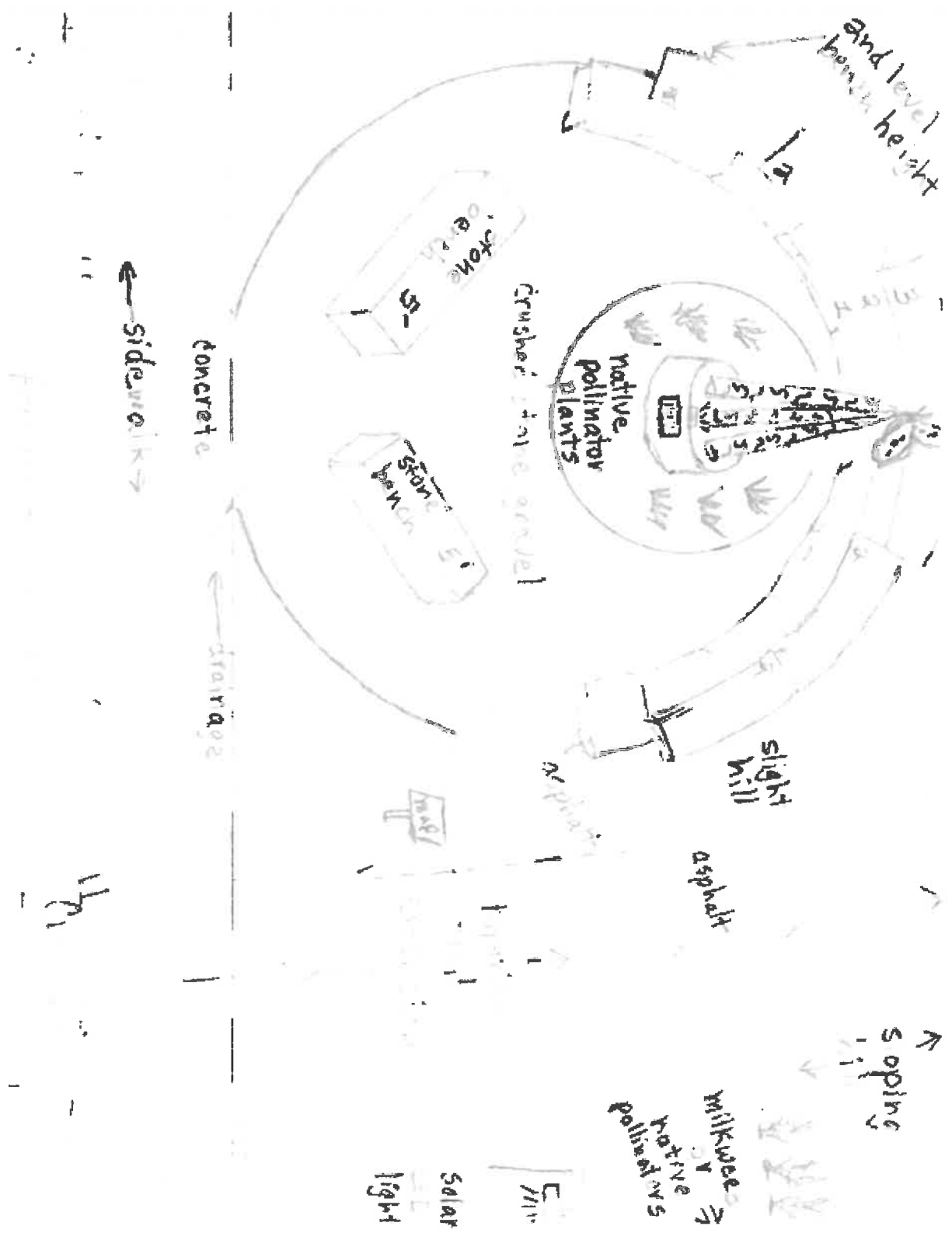
District (TDD), resulting in no net cost to the City of Chesterfield. Execution of a Program Agreement with MoDOT and execution of a design contract with George Butler and Associates (GBA) were authorized by City Council on March 19, 2018.

On April 2, 2018, City Council authorized an Amendment to the Contribution of Land Agreement with Chesterfield Village Incorporated (CVI) in order to acquire the land necessary to construct a portion of the Riparian Trail, and the closing documents with CVI were signed by the City on June 20, 2019.

Construction of this project was originally planned to commence in late summer of 2020. However, the Wildhorse Village project will include construction of the Burkhardt Place extension and signalization of the Burkhardt Place/Wild Horse Creek Road intersection. In order to allow for necessary coordination with the developer on the design of the trail crossing at the new signal, Staff secured a project extension from East-West Gateway, delaying this project to 2021.

The final Plans, Specifications, and Estimate (PS&E) for the trail are being revised to coordinate with the Burkhardt extension and the Wild Horse Creek intersection plans. The City received Right of Way Clearance from MoDOT on March 3, 2021, allowing final submittal of the PS&E, which should occur in late March. Once the PS&E is approved by MoDOT, Staff will advertise for bids with an expectation that construction will commence this summer.





Artist Name: Glory Hartsfield
Artwork Name: Hartsfield-Portal
to Metamorphosis

Dimensions: 11' x 4' x 2'

Media: Steel & Paint

Maintenance: None

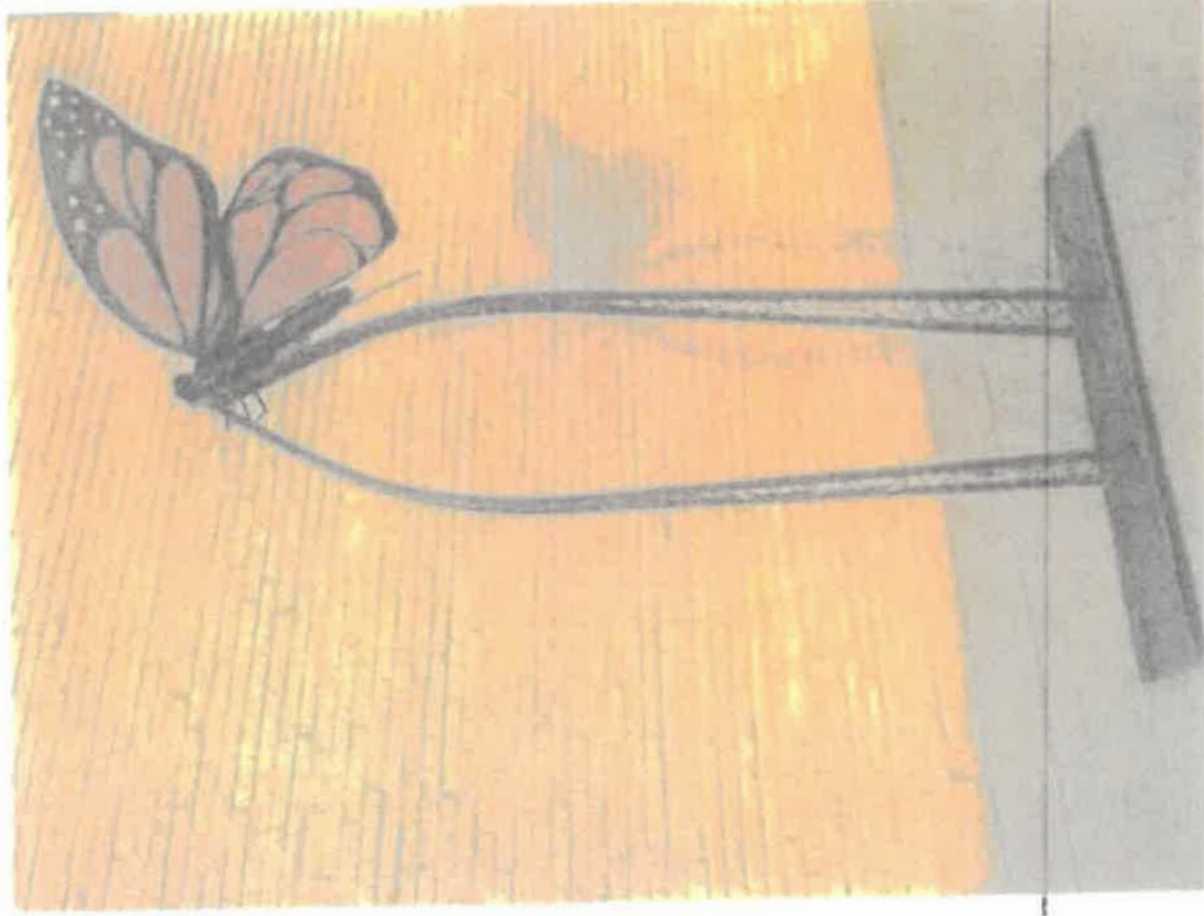
Price: \$6,000

From: TX

Descriptions: Being able to change what is familiar into something that was born of imagination aligns with my aspirations to make changes in life, construct my own destiny and encourage others to do the same. My goal is to continue to make and show sculpture that speaks to the viewers of troubles and triumphs I have encountered in my journey in hopes of motivating others to conquer their own troubles and become aware that we control the course our

~~takes us and are beholden to none.~~

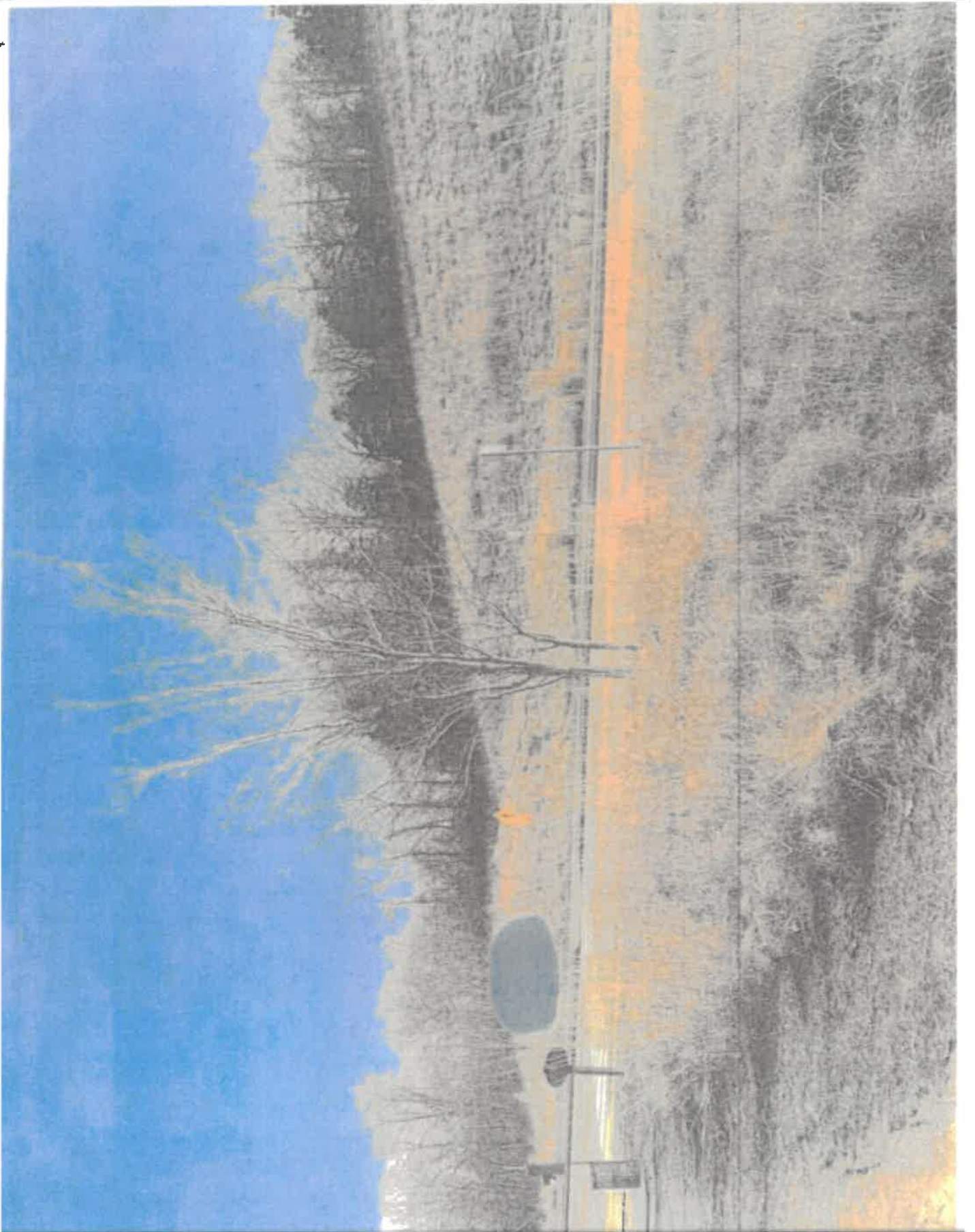
Additional notes: The Bases are equipped with steel tabs for anchor bolts to secure the sculpture into the concrete pad.



Example: Proposed statue is very similar, but 9' tall.

4' stone block bench near library.

Propose 5' length & bench height
for 2 in proposed area.





Example of stone wall blocks stepped along the
concrete of the circle. The majority of the
wall would be 'berc' height around the back.

MONARCH WAYSTATION



This site provides milkweeds, nectar sources, and shelter needed to sustain monarch butterflies as they migrate through North America.

Certified and registered by Monarch Watch as an official Monarch Waystation.

CREATE, CONSERVE, & PROTECT MONARCH HABITATS.



WWW.MONARCHWATCH.ORG



Gardening Help

Plant Index

Lawn, Landscape & Garden Design

Edible Gardening

Arbors, Trellis & Pergolas

Container Plants

Perennials & Annuals

Pruning & Maintenance

Soil & Fertilization

Watering & Irrigation

Winter Care

Plant Diseases & Pests

Plant Selection

Planting & Transplanting

Planting & Transplanting

Planting & Transplanting

Planting & Transplanting

Planting & Transplanting

Planting & Transplanting

Planting & Transplanting

Planting & Transplanting

Planting & Transplanting

Planting & Transplanting

Planting & Transplanting

Planting & Transplanting

Planting & Transplanting

Planting & Transplanting

Planting & Transplanting

Planting & Transplanting

Planting & Transplanting

Planting & Transplanting

Planting & Transplanting

Planting & Transplanting

Planting & Transplanting

Planting & Transplanting

Planting & Transplanting

Planting & Transplanting

Planting & Transplanting

Planting & Transplanting

Planting & Transplanting

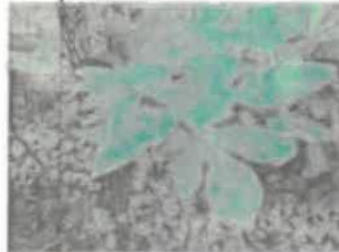
Planting & Transplanting

Planting & Transplanting

Planting & Transplanting

Sassafras albidum

[Back to Previous Page](#)



More Images

Species Native to Missouri

Common Name: sassafras

Type: Tree

Family: Lauraceae

Native Range: Eastern North America

Zone: 4 to 9

Height: 30.00 to 60.00 feet

Spread: 25.00 to 40.00 feet

Bloom Time: April to May

Bloom Description: Greenish-yellow

Sun: Full sun to part shade

Water: Medium

Maintenance: Medium

Suggested Use: Flowering Tree

Flower: Showy

Fruit: Showy

Tolerate: Deer Drought, Clay Soil, Black Walnut

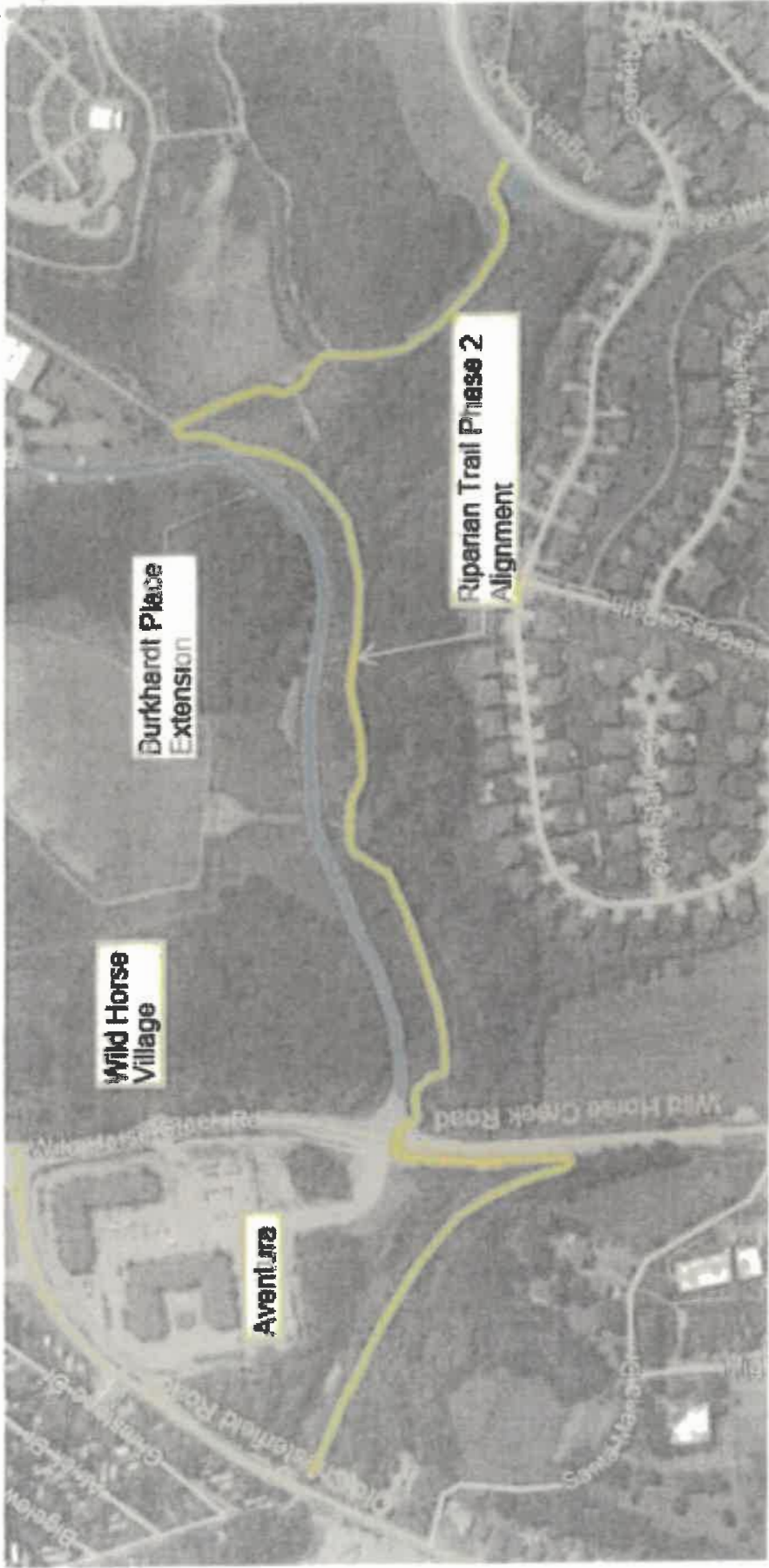
[Garden Locations](#)

Culture

Easy to grow in average, medium, well-drained soil in full sun to part shade. Prefers moist, acidic, loamy soils. Tolerates dry, sandy soils. Large taproot makes transplanting of established trees difficult. If root suckers are not removed, tree will spread and begin to take on the appearance of a large multi-stemmed shrub.

Noteworthy Characteristics

Sassafras albidum, commonly called sassafras, is a Missouri native, ornamental, small to medium-sized deciduous tree which occurs in wood margins, fence rows, fields, thickets and roadsides. Shrubby in youth, but matures to a dense, pyramidal tree up to 60' tall. Spreads by root suckers to form large colonies in the wild. All of the trees in a colony may rise from the same parent. Dioecious (separate male and female trees). Attractive, greenish-yellow flowers appear in clusters at the branch ends in spring. Flowers on female trees (if pollinated) give way to small pendant clusters of bluish-black berries (drupes) which are borne in scarlet cup-like receptacles on scarlet stalks (pedicels). Fruits mature in September. Variable, 1-7" long leaves in three shapes (ovate, mitten-shaped and three-lobed) are bright green above and glaucous (*albidum* meaning white) below. Excellent yellow, purple and red fall color. To Native Americans, sassafras oils were freely used in tonics as medical panaceas. Culinary uses have included: sassafras tea (bark), root beer flavoring (root oil) and a gumbo-thickening agent called filé (stem pith). More recently, sassafras oils have been determined to contain a carcinogenic substance (aflatoxin) and many of the former uses for the oils are now banned by the U. S. Food and Drug Administration.



Blue dot represents
proposed location

