

Architectural Review Board Staff Report

Project Type:	Amended Architectural Elevations
Meeting Date:	June 13, 2019
From:	Andrew Stanislav, Planner <i>AS</i>
Location:	East corner of the intersection of Olive Boulevard and Chesterfield Parkway.
Description:	<u>Equilon Shell (Circle K) 2nd Amended Architectural Elevations:</u> Amended Architectural Elevations for a 0.77 acre tract of land zoned “C-8” Planned Commercial District located on the east corner of the intersection of Olive Boulevard and Chesterfield Parkway (18S520624).

PROPOSAL SUMMARY

Municipal Resolutions, on behalf of Spirit Energy, LLC, has submitted a request to modify the Architectural Elevations of the convenience store, carwash, and gas canopy of the Circle K location at the intersection of Olive Boulevard and Chesterfield Parkway.

As part of a rebranding effort, the applicant is remodeling the façade of these structures with replacement ACM panels at the top of each structure as well as exterior paint colors. Signage is a separate process and will be reviewed to comply with all applicable regulations.



Figure 1: Subject Site Aerial

HISTORY OF SUBJECT SITE

The subject site was rezoned from “R3” Residence District and “C-2” Shopping District to “C-8” Planned Commercial District in 1986 by St. Louis County, which was later amended on multiple occasions for items relating to hours of operation, road improvements and sidewalks, and temporary signage. The most recent amendment occurred in 1999 to increase the square footage of the convenience store, resulting in City of Chesterfield Ordinance 1512, which is the current governing ordinance for the site.

Various amendments to the Site Development Plan were approved prior to the City’s incorporation in relation to the ordinance amendments noted above, with the most recent Amended Site Development Plan recorded in 1999 pertaining to the increased square footage approved for the convenience store. Additionally, architectural elevations were approved in 2009 to allow the existing red and white illuminated bands and color palette for the site as seen in the images below.



Figure 2: Carwash, Convenience Store, and Gas Canopy



Figure 3: Gas Canopy

STAFF ANALYSIS

Site Relationships

The subject site is located at the east corner of the intersection of Olive Boulevard and Chesterfield Parkway. There are no changes proposed that impact site circulation, access, scale, landscaping, or other site related elements. Modifications to the elevations will not alter the primary orientation of the carwash, convenience store, or gas canopy.

Materials and Color

The existing conditions of the site are depicted in Figures 2 and 3 above. Materials and colors selected for the updated elevations are part of Circle K’s rebranding effort as seen throughout the St. Louis region. Proposed changes to the gas canopy, convenience store, and carwash are described in further detail below.

Gas canopy. The existing gas canopy fascia is metal with raised illuminated red striping, which is proposed to be refaced with a new skin to coincide with Circle K’s updated color palette for the development. Proposed colors include red, white, and tangerine, with the proposed red strip

servicing as the primary color element as depicted in the proposed elevations in Figure 4 below. The replacement fascia band element is three (3) feet tall, and there is currently a temporary treatment around the gas canopy reflecting the proposed modifications (as seen in Figures 2 and 3 above). The applicant has also noted that the existing gas canopy columns are painted white with a gray stripe approximately two (2) feet from grade, which is shown as remaining in the proposed elevations.



Figure 4: Existing and Proposed Gas Canopy Fascia

Convenience Store. The proposed color palette for the building includes preserving the existing white primary wall color and painting the wall area 30-inches from grade to Nuthatch brown, creating a wainscoting effect. Additionally, red, white, and tangerine color ACM fascia bands are proposed to reface the existing banding around the convenience store building to match that proposed for the gas canopy, which are also three (3) feet tall. Figure 5 below depicts the proposed exterior wall color and ACM fascia band replacement in greater detail.



Figure 5: Existing and Proposed Convenience Store Elevations

Carwash building. The proposed color palette for the carwash building matches that proposed for the convenience store, including the Nuthatch brown painted 30-inch band from grade. The applicant is also proposing to reface the existing fascia bands with the red, white, and tangerine replacement proposed for the gas canopy and convenience store. The fascia bands proposed for the carwash are two (2) feet tall, compared to the three (3) foot tall banding proposed for the gas canopy and convenience store. Figure 6 below depicts the existing and proposed conditions for the carwash building.

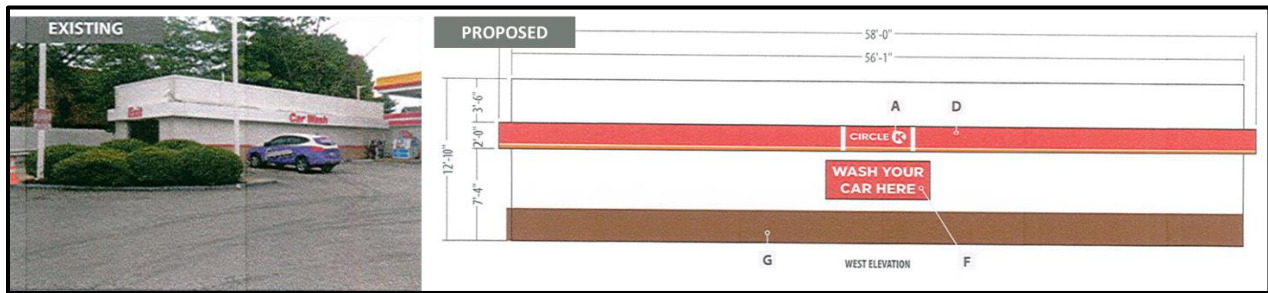


Figure 6: Existing and Proposed Carwash Elevations

Signage

Signage is approved through a separate process and will be reviewed for compliance with all applicable regulations for this development.

DEPARTMENTAL INPUT

Staff has reviewed the Amended Architectural Elevations and requests review and recommendation on the 2nd Amended Architectural Elevations for Equilon Shell (Circle K).

MOTION

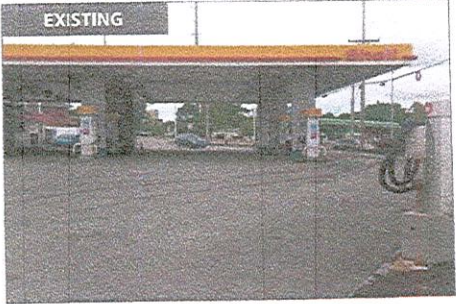
The following options are provided to the Architectural Review Board for consideration relative to this application:

- 1) "I move to forward the 2nd Amended Architectural Elevations for Equilon Shell (Circle K) as presented, with a recommendation for approval (or denial) to the Planning Commission."
- 2) "I move to forward the 2nd Amended Architectural Elevations for Equilon Shell (Circle K) to the Planning Commission with a recommendation for approval with the following conditions..."

Attachments

1. Architectural Review Packet Submittal

RECEIVED
 MAR 14 2019
 City of Chesterfield
 Department of Public Services



CORPORATE IDENTIFICATION SOLUTIONS

CUSTOMER
 Circle K
 SITE NUMBER
 1651

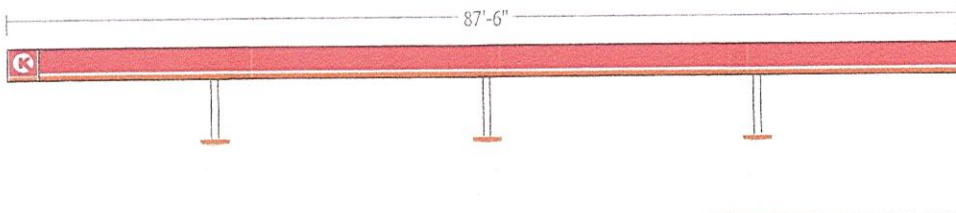
LOCATION
 Chesterfield, MO
 ACCOUNT REP
 Ben DeHayes

DRAWN BY
 MH
 DATE
 03/05/19

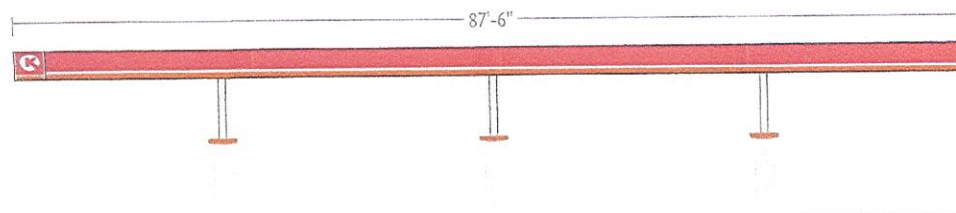
REVISION
 01
 SCALE
 NTS

CORPORATE ID SOLUTIONS
 5563 N Elston Ave.
 Chicago, IL 60630
 P: 773-763-9600 | F: 773-763-9606
 www.CorporateIDSolutions.com

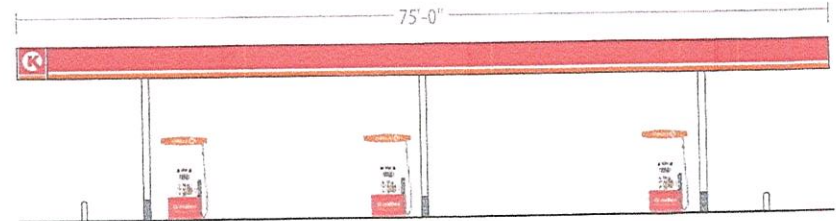
CUSTOMER ACCEPTANCE
 THIS DRAWING IS THE PROPERTY OF CORPORATE IDENTIFICATION SOLUTIONS, INC., CHICAGO, ILLINOIS, AND CONTAINS TRADE SECRETS AND CONFIDENTIAL INFORMATION. THIS DRAWING IS TRANSMITTED TO THE CUSTOMER AND SUPPLIER OF CORPORATE IDENTIFICATION SOLUTIONS, INC. BY WAY OF EMAIL. THIS DRAWING MAY NOT BE COPIED OR REPRODUCED, IN WHOLE OR IN PART, FOR ANY USE OR FOR ANY OTHER PURPOSES WITHOUT THE PRIOR WRITTEN CONSENT OF CORPORATE IDENTIFICATION SOLUTIONS, INC.
 SIGNATURE _____ DATE _____



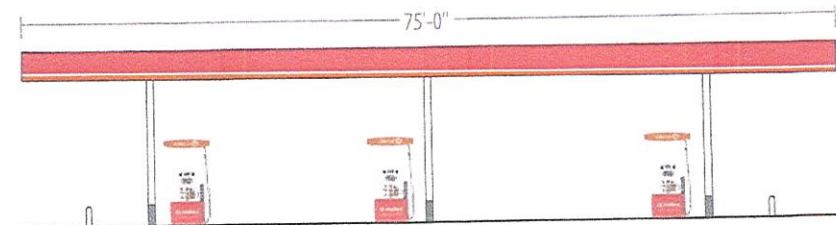
NORTH ELEVATION



SOUTH ELEVATION



WEST ELEVATION



EAST ELEVATION

LEVEL C
ARTWORK REFLECTS CURRENT SURVEY

NORTH ELEVATION

Gas Island Canopy Fascia	3'-0" x 87'-6"	262.5 SF	2.9%
Illuminated Circle K Totem	36" + 30"	7.5 SF	of available space

SOUTH ELEVATION

Gas Island Canopy Fascia	3'-0" x 0'-0"	262.5 SF	2.9%
Illuminated Circle K Totem	36" + 30"	7.5 SF	of available space

WEST ELEVATION

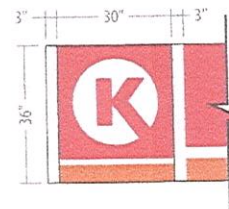
Gas Island Canopy Fascia	3'-0" x 75'-0"	225 SF	3.3%
Illuminated Circle K Totem	36" + 30"	7.5 SF	of available space

EAST ELEVATION

Non-illuminated Red, White, and Orange ACM panels

COLUMN PAINT SCHEDULE (SEMI-GLOSS FINISH)

- SW #7570 Egret White - From gray to bottom of canopy
- SW #6236 Grays Harbor - From grade to 24" above grade



CORPORATE IDENTIFICATION SOLUTIONS

CUSTOMER
Circle K
SITE NUMBER
1651

LOCATION
Chesterfield, MO
ACCOUNT REP
Ben DeHayes

DRAWN BY
MH
DATE
03/05/19

REVISION
01
SCALE
NTS

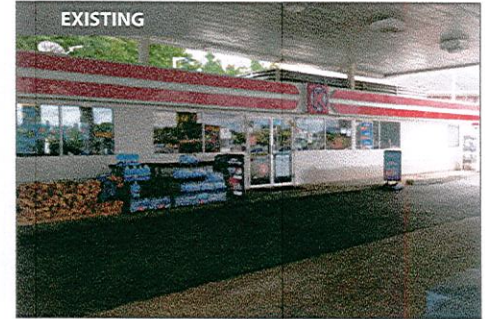
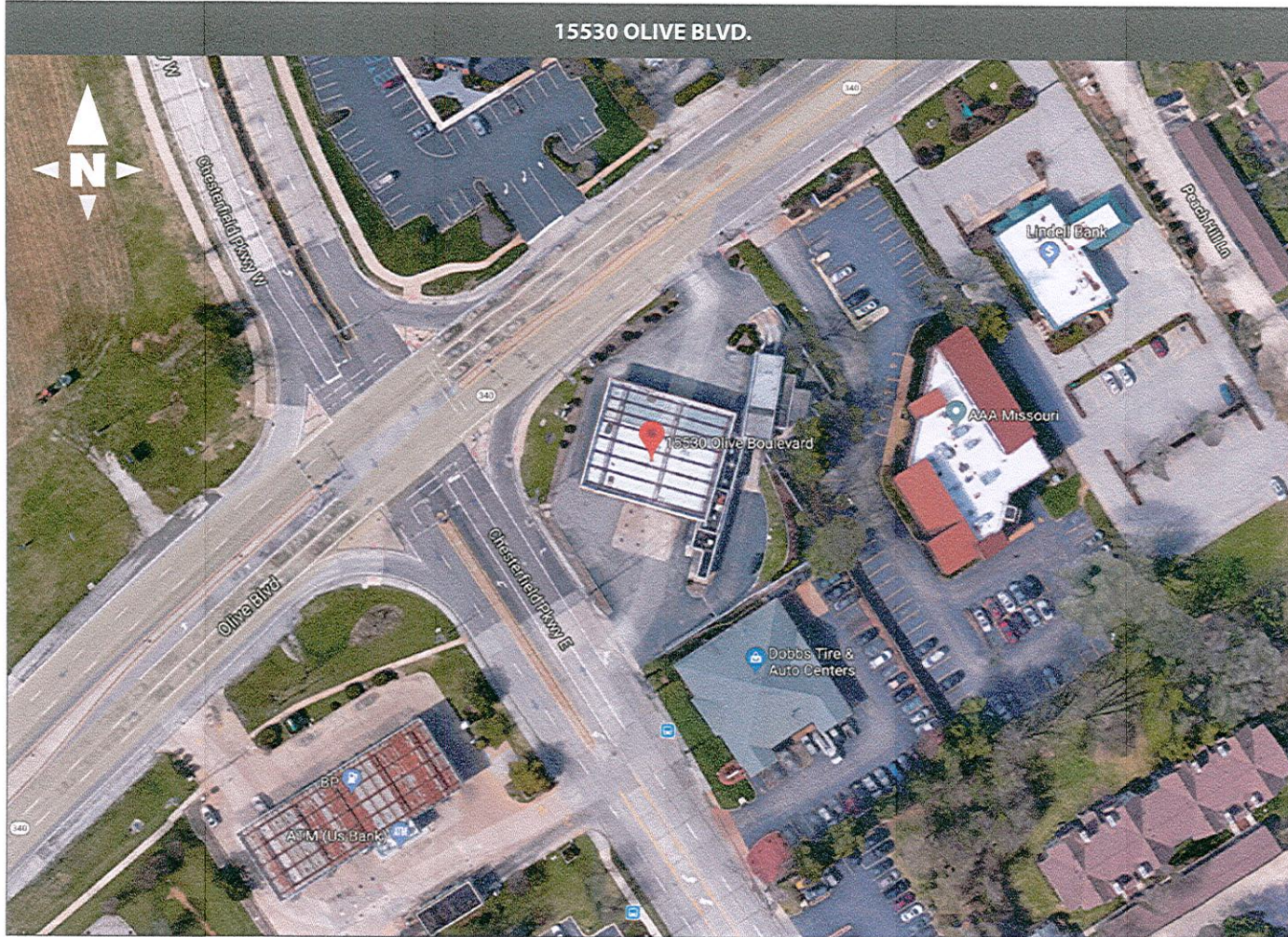
CORPORATE ID SOLUTIONS
5563 N Elston Ave.
Chicago, IL 60630
P: 773-763-9600 | F: 773-763-9606
www.CorporateIDSolutions.com

CUSTOMER ACCEPTANCE

THIS DRAWING IS THE PROPERTY OF CORPORATE IDENTIFICATION SOLUTIONS, INC., CHICAGO, ILLINOIS, AND CONTAINS PROPRIETARY AND CONFIDENTIAL INFORMATION. THIS DRAWING IS TRANSFERRED TO THE CUSTOMER AND SUPPLIERS OF CORPORATE IDENTIFICATION SOLUTIONS, INC. BY WAY OF A&AS. THIS DRAWING MAY NOT BE COPIED OR REPRODUCED IN WHOLE OR IN PART, NOR MAY IT OR THE INFORMATION IT CONTAINS BE DISCLOSED OR TRANSFERRED TO ANY OTHER PARTY OR PERSONS WITHOUT THE PRIOR WRITTEN CONSENT OF CORPORATE IDENTIFICATION SOLUTIONS, INC.

SIGNATURE _____ DATE _____

RECEIVED
MAR 14 2019
 City of Chesterfield
 Department of Public Services



CORPORATE IDENTIFICATION SOLUTIONS

CUSTOMER
Circle K

SITE NUMBER
1651

LOCATION
Chesterfield, MO

ACCOUNT REP
Ben DeHayes

DRAWN BY
MH

DATE
08/27/18

REVISION
00

SCALE
As Noted

CORPORATE ID SOLUTIONS
5563 N Elston Ave.
Chicago, IL 60630
P: 773-763-9600 | F: 773-763-9606
www.CorporateIDSolutions.com

CUSTOMER ACCEPTANCE

THIS DRAWING IS THE PROPERTY OF CORPORATE IDENTIFICATION SOLUTIONS, INC., CHICAGO, ILLINOIS, AND CONTAINS PROPRIETARY AND CONFIDENTIAL INFORMATION. THIS DRAWING IS TRANSFERRED TO THE CUSTOMERS AND SUPPLIERS OF CORPORATE IDENTIFICATION SOLUTIONS, INC. BY WAY OF LOAN. THIS DRAWING MAY NOT BE COPIED OR REPRODUCED, IN WHOLE OR IN PART, NOR MAY IT OR THE INFORMATION IT CONTAINS BE DISCLOSED OR TRANSFERRED TO ANY OTHER PARTY OR PERSONS WITHOUT THE PRIOR WRITTEN CONSENT OF CORPORATE IDENTIFICATION SOLUTIONS, INC.

SIGNATURE _____ DATE _____



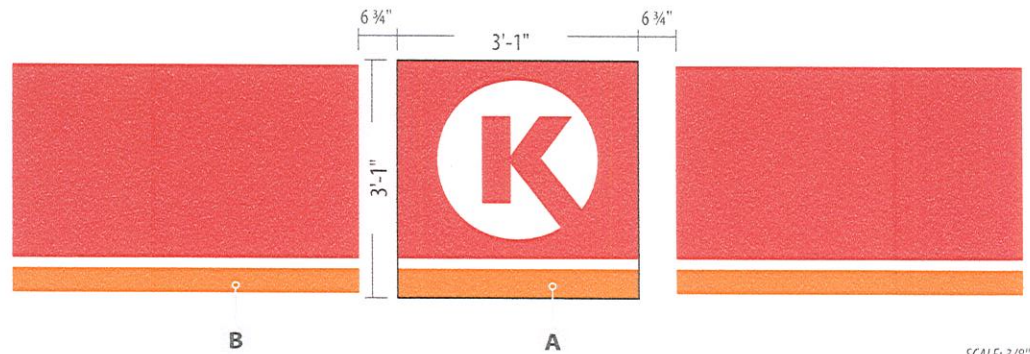
LEVEL C
ARTWORK REFLECTS CURRENT SURVEY

	HEIGHT	FRONT	SIDES
BUILDING INFO	10'-6"	98'-6"	15'-0"
FASCIA INFO	3'-0"	100'-6"	17'-0"

	SIGN DESCRIPTION	QTY	SIZE	AREA
A	Reface existing wall sign	1	3'-1" x 3'-1"	9.5 SF
B	ACM Fascia Bands	1	3'-0" tall	135 LF
C	Building Painted to Match Circle K Paint Schedule			

CIRCLE K VINYL COLORS
■ 3M 3630-33 Red
■ 3M 3630-3540 Tangerine

PAINT SCHEDULE (SEMI-GLOSS FINISH)
■ SW #6088 Nuthatch - Grade to 30" above grade starting at front entry door. Gray to be remain horizontal and may change in elevation from starting point.
■ SW #7570 Egret White - 30" above grade to bottom of fascia.



SCALE: 3/8" = 1'-0"



CORPORATE IDENTIFICATION SOLUTIONS

CUSTOMER
Circle K

SITE NUMBER
1651

LOCATION
Chesterfield, MO

ACCOUNT REP
Ben DeHayes

DRAWN BY
MH

DATE
08/27/18

REVISION
00

SCALE
As Noted

CORPORATE ID SOLUTIONS
5563 N Elston Ave.
Chicago, IL 60630
P: 773-763-9600 | F: 773-763-9606
www.CorporateIDSolutions.com

CUSTOMER ACCEPTANCE

THIS DRAWING IS THE PROPERTY OF CORPORATE IDENTIFICATION SOLUTIONS, INC., CHICAGO, ILLINOIS, AND CONTAINS PROPRIETARY AND CONFIDENTIAL INFORMATION. THIS DRAWING IS TRANSFERRED TO THE CUSTOMER AND SUPPLIERS OF CORPORATE IDENTIFICATION SOLUTIONS, INC BY WAY OF LEASE. THIS DRAWING MAY NOT BE COPIED OR REPRODUCED, IN WHOLE OR IN PART, NOR MAY IT OR THE INFORMATION IT CONTAINS BE DISCLOSED OR TRANSFERRED TO ANY OTHER PARTY OR PERSONS WITHOUT THE PRIOR WRITTEN CONSENT OF CORPORATE IDENTIFICATION SOLUTIONS, INC.

SIGNATURE _____ DATE _____



LEVEL C

ARTWORK REFLECTS CURRENT SURVEY

	HEIGHT	FRONT	SIDES
BUILDING INFO	10'-6"	98'-6"	15'-0"
FASCIA INFO	3'-0"	100'-6"	17'-0"

	SIGN DESCRIPTION	QTY	SIZE	AREA
A	Reface existing wall sign	1	3'-1" x 3'-1"	9.5 SF
B	ACM Fascia Bands	1	3'-0" tall	135 LF
C	Building Painted to Match Circle K Paint Schedule			

CIRCLE K VINYL COLORS
■ 3M 3630-33 Red
■ 3M 3630-3540 Tangerine

PAINT SCHEDULE (SEMI-GLOSS FINISH)
■ SW #6088 Nuthatch - Grade to 30" above grade starting at front entry door. Gray to be remain horizontal and may change in elevation from starting point.

SW #7570 Egret White - 30" above grade to bottom of fascia.



CORPORATE IDENTIFICATION SOLUTIONS

CUSTOMER
Circle K

SITE NUMBER
1651

LOCATION
Chesterfield, MO

ACCOUNT REP
Ben DeHayes

DRAWN BY
MH

DATE
08/27/18

REVISION
00

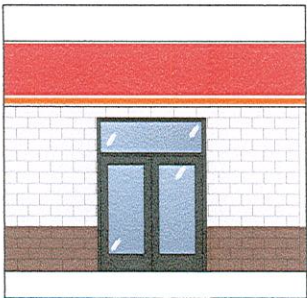
SCALE
As Noted

CORPORATE ID SOLUTIONS
5563 N Elston Ave.
Chicago, IL 60630
P: 773-763-9600 | F: 773-763-9606
www.CorporateIDSolutions.com

CUSTOMER ACCEPTANCE

THIS DRAWING IS THE PROPERTY OF CORPORATE IDENTIFICATION SOLUTIONS, INC., CHICAGO, ILLINOIS, AND CONTAINS PROPRIETARY AND CONFIDENTIAL INFORMATION. THIS DRAWING IS TRANSFERRED TO THE CUSTOMER AND SUPPLIERS OF CORPORATE IDENTIFICATION SOLUTIONS, INC. BY WAY OF LOAN. THIS DRAWING MAY NOT BE COPIED OR REPRODUCED, IN WHOLE OR IN PART, NOR MAY IT OR THE INFORMATION IT CONTAINS BE DISCLOSED OR TRANSFERRED TO ANY OTHER PARTY OR PERSONS WITHOUT THE PRIOR WRITTEN CONSENT OF CORPORATE IDENTIFICATION SOLUTIONS, INC.

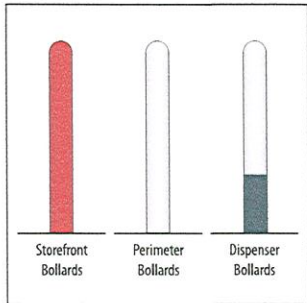
SIGNATURE _____ DATE _____



STORE/CAR WASH BUILDINGS

NUTHATCH paint from grade to 30" above grade starting at entry door. To remain horizontal and may change in elevation from starting point.

EGRET WHITE paint from 30" above grade to bottom of fascia.

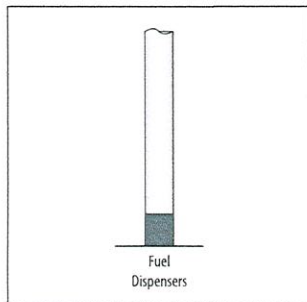


BOLLARDS

SAFETY RED for bollards along storefront and Car Wash (if applicable).

SHELL WARM WHITE paint from from 12" above grade to top of bollards next to fuel dispensers. Perimeter bollards are painted all white.

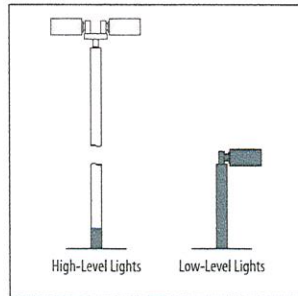
SHELL GRAY paint from grade to 12" above grade on bollards next to fuel dispensers.



CANOPY COLUMNS

SHELL GRAY paint from grade to 12" above grade for non-diesel fuel dispensers.

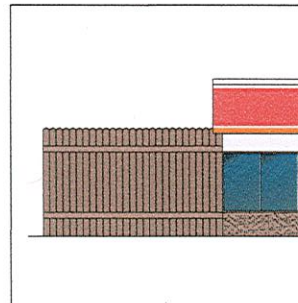
SHELL WARM WHITE paint from 12" above grade to bottom of canopy on fuel dispensers.



LIGHTPOLES

SHELL GRAY paint from grade to 12" above grade for high-level light poles. Low-level light fixtures are painted Shell Gray completely.

SHELL WARM WHITE paint from 12" above grade to top of high-level light poles



DUMPSTER ENCLOSURE

NUTHATCH paint entire enclosure.



MERCHANDISE DISPLAYS

If there are exterior merchandising displays with previous Circle K branding, then update to the new Circle K branding.

PAINT COLORS

SAFETY RED
SW #4081
Semi-gloss finish

SHELL WARM WHITE
RAL9016
Semi-gloss finish

EGRET WHITE
SW #7570
Semi-gloss finish

NUTHATCH
SW #6088
Semi-gloss finish

SHELL GRAY
Paint to match Pantone 431
Semi-gloss finish

SIGN COLORS

PRIMARY RED
Pantone 485
3M 3630-33 Red

PRIMARY ORANGE
Pantone 144
3M 3630-3540 Tangerine



CORPORATE IDENTIFICATION SOLUTIONS

CUSTOMER
Circle K

SITE NUMBER
1651

LOCATION
Chesterfield, MO

ACCOUNT REP
Ben DeHayes

DRAWN BY
MH

DATE
08/27/18

REVISION
00

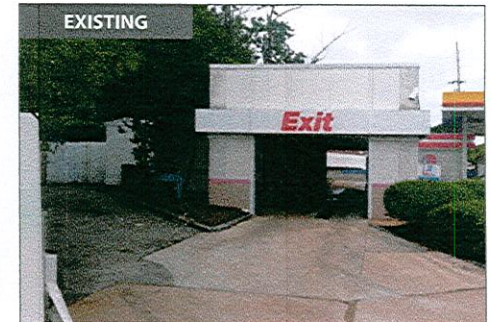
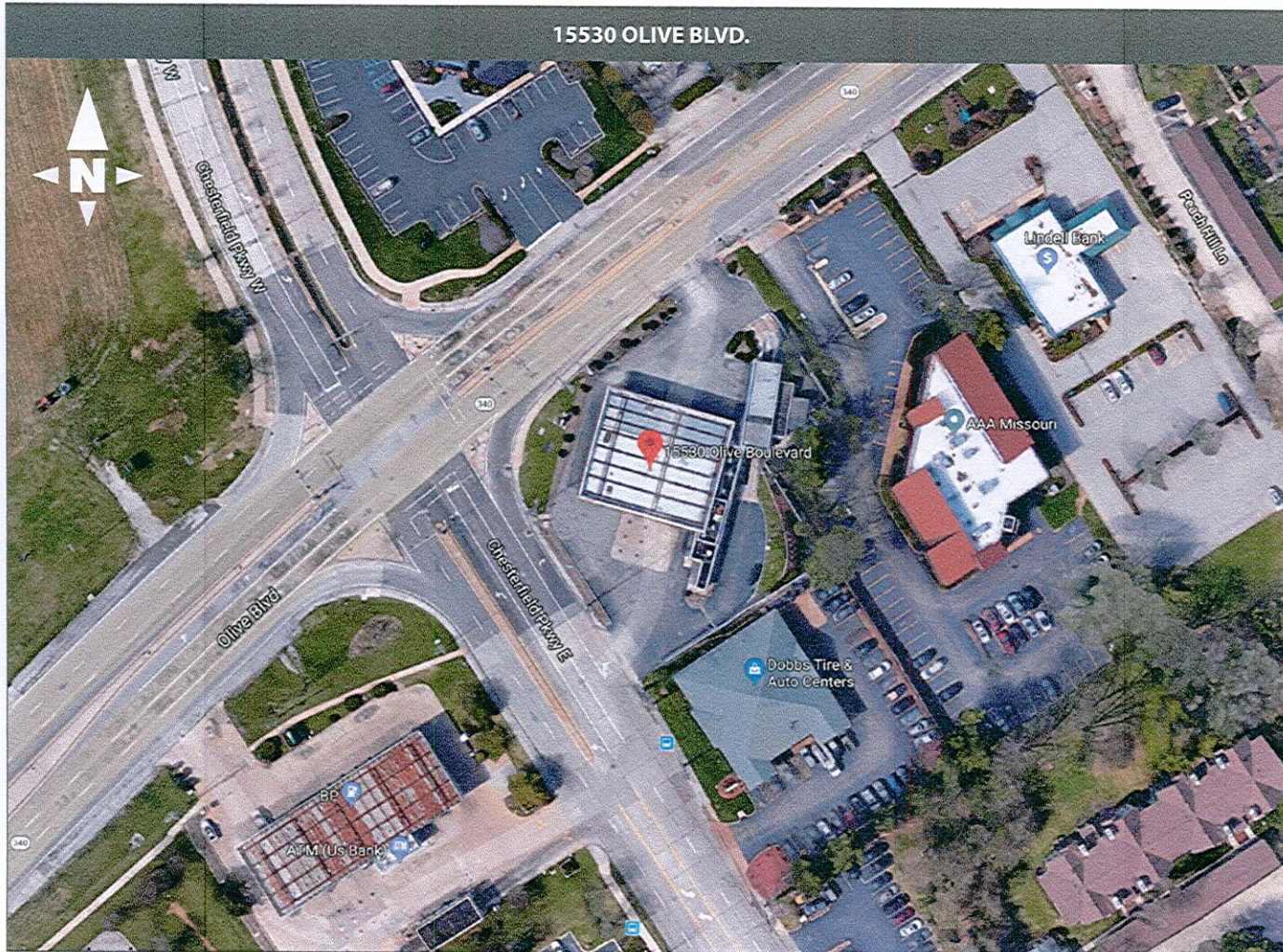
SCALE
As Noted

CORPORATE ID SOLUTIONS
5563 N Elston Ave.
Chicago, IL 60630
P: 773-763-9600 | F: 773-763-9606
www.CorporateIDSolutions.com

CUSTOMER ACCEPTANCE

THIS DRAWING IS THE PROPERTY OF CORPORATE IDENTIFICATION SOLUTIONS, INC. CHICAGO, ILLINOIS, AND CONTAINS PROPRIETARY AND CONFIDENTIAL INFORMATION. THIS DRAWING IS TRANSFERRED TO THE CUSTOMERS AND SUPPLIERS OF CORPORATE IDENTIFICATION SOLUTIONS, INC BY WAY OF LOAN. THIS DRAWING MAY NOT BE COPIED OR REPRODUCED, IN WHOLE OR IN PART, NOR MAY IT OR THE INFORMATION IT CONTAINS BE DISCLOSED OR TRANSFERRED TO ANY OTHER PARTY OR PERSONS WITHOUT THE PRIOR WRITTEN CONSENT OF CORPORATE IDENTIFICATION SOLUTIONS, INC.

SIGNATURE _____ DATE _____



CORPORATE IDENTIFICATION SOLUTIONS

CUSTOMER
Circle K

SITE NUMBER
1651

LOCATION
Chesterfield, MO

ACCOUNT REP
Ben DeHayes

DRAWN BY
JR

DATE
03/26/19

REVISION
02

SCALE
NTS

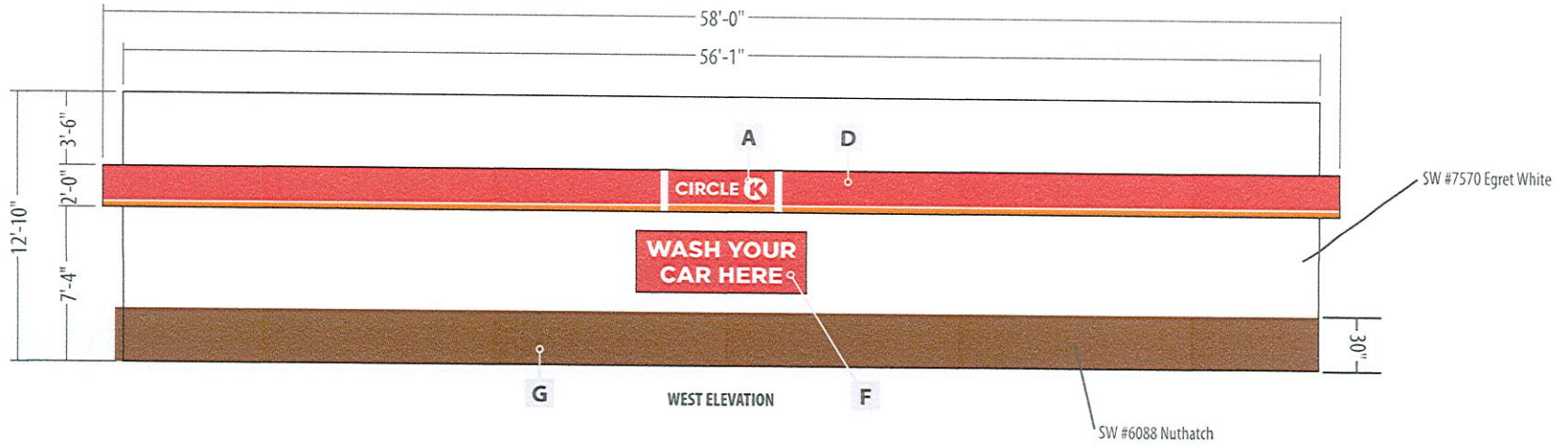
CORPORATE ID SOLUTIONS
5563 N Elston Ave.
Chicago, IL 60630
P: 773-763-9600 | F: 773-763-9606
www.CorporateIDSolutions.com

CUSTOMER ACCEPTANCE

THIS DRAWING IS THE PROPERTY OF CORPORATE IDENTIFICATION SOLUTIONS, INC., CHICAGO, ILLINOIS, AND CONTAINS PROPRIETARY AND CONFIDENTIAL INFORMATION. THIS DRAWING IS TRANSFERRED TO THE CUSTOMERS AND SUPPLIERS OF CORPORATE IDENTIFICATION SOLUTIONS, INC. BY WAY OF LOAN. THIS DRAWING MAY NOT BE COPIED OR REPRODUCED, IN WHOLE OR IN PART, NOR MAY IT OR THE INFORMATION IT CONTAINS BE DISCLOSED OR TRANSFERRED TO ANY OTHER PARTY OR PERSONS WITHOUT THE PRIOR WRITTEN CONSENT OF CORPORATE IDENTIFICATION SOLUTIONS, INC.

SIGNATURE _____ DATE _____

PROPOSED

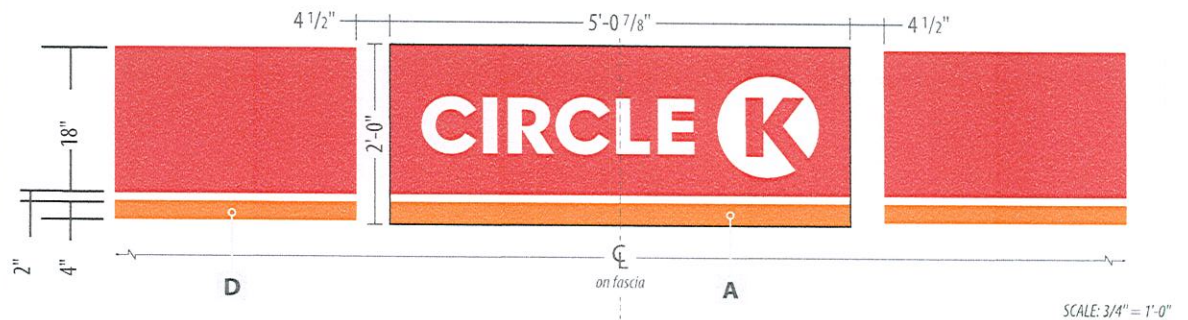


ARTWORK REFLECTS CURRENT SURVEY

	SIGN DESCRIPTION	QTY	SIZE	AREA
A	Vinyl Circle K Decal	1	2'-0" x 5'-0 7/8"	10.1 SF
B	Vinyl Car Wash Decal	1	7 3/8" x 4'-9 1/8"	2.9 SF
C	Vinyl Exit Car Wash Decal	1	10" x 9'-6"	7.9 SF
D	Fascia Bands	1	2'-0" high	101 LF
E	Car Wash Portal Legs	4	12'-0 x 23 5/8"	23.6 SF
F	Call to Action Banner	1	3'-0" x 8'-0"	24 SF
G	Building, Bollards & Clearance Sign Painted to Match Circle K Paint Schedule			

CIRCLE K VINYL COLORS
 3M 3630-33 Red
 3M 3630-3540 Tangerine

PAINT SCHEDULE (SEMI-GLOSS FINISH)
 SW #6088 Nuthatch - Grade to 30" above grade starting at front entry door. Gray to be remain horizontal and may change in elevation from starting point.
 SW #7570 Egret White - 30" above grade to bottom of fascia.



CORPORATE IDENTIFICATION SOLUTIONS

CUSTOMER
Circle K
 SITE NUMBER
1651

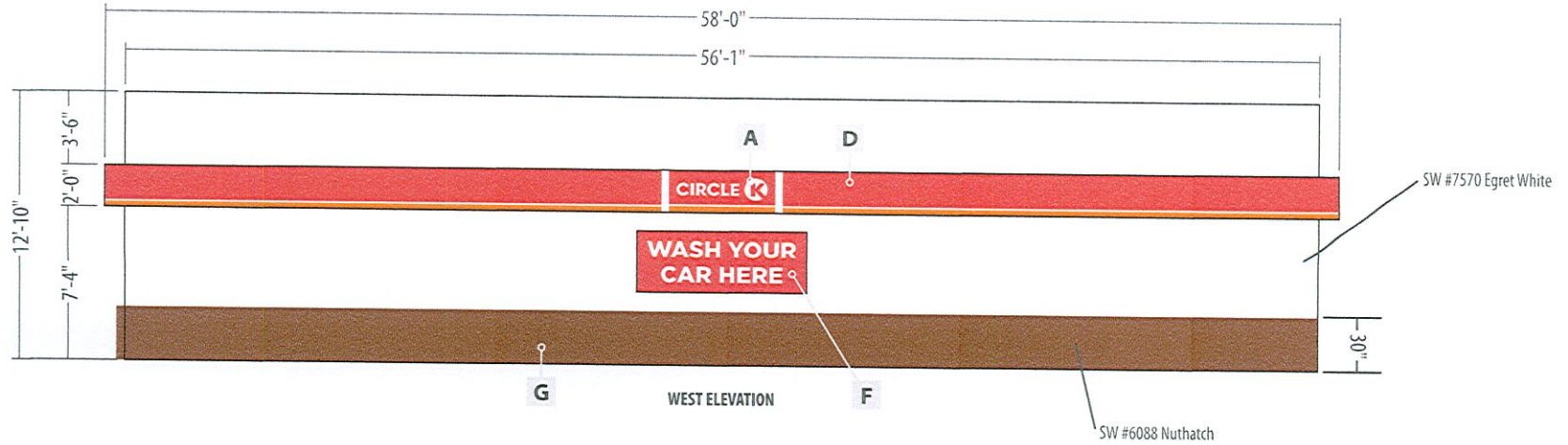
LOCATION
Chesterfield, MO
 ACCOUNT REP
Ben DeHayes

DRAWN BY
JR
 DATE
03/26/19
 REVISION
02
 SCALE
NTS

CORPORATE ID SOLUTIONS
 5563 N Elston Ave.
 Chicago, IL 60630
 P: 773-763-9600 | F: 773-763-9606
 www.CorporateIDSolutions.com

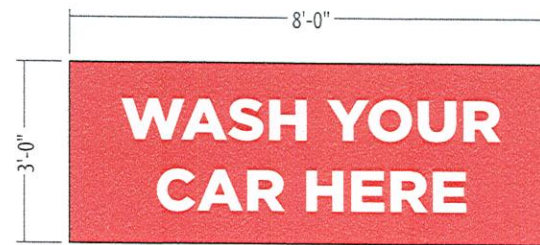
CUSTOMER ACCEPTANCE
 THIS DRAWING IS THE PROPERTY OF CORPORATE IDENTIFICATION SOLUTIONS, INC. CHICAGO, ILLINOIS, AND CONTAINS PROPRIETARY AND CONFIDENTIAL INFORMATION. THIS DRAWING IS TRANSFERRED TO THE CUSTOMERS AND SUPPLIERS OF CORPORATE IDENTIFICATION SOLUTIONS, INC BY WAY OF LEASE. THIS DRAWING MAY NOT BE COPIED OR REPRODUCED, IN WHOLE OR IN PART, NOR MAY IT OR THE INFORMATION IT CONTAINS BE DISCLOSED OR TRANSFERRED TO ANY OTHER PARTY OR PERSONS WITHOUT THE PRIOR WRITTEN CONSENT OF CORPORATE IDENTIFICATION SOLUTIONS, INC.
 SIGNATURE _____ DATE _____

PROPOSED



ARTWORK REFLECTS CURRENT SURVEY

	SIGN DESCRIPTION	QTY	SIZE	AREA
A	Vinyl Circle K Decal	1	2'-0" x 5'-0 7/8"	10.1 SF
B	Vinyl Car Wash Decal	1	7 3/8" x 4'-9 1/8"	2.9 SF
C	Vinyl Exit Car Wash Decal	1	10" x 9'-6"	7.9 SF
D	Fascia Bands	1	2'-0" high	101 LF
E	Car Wash Portal Legs	4	12'-0 x 23 5/8"	23.6 SF
F	Call to Action Banner	1	3'-0" x 8'-0"	24 SF
G	Building, Bollards & Clearance Sign Painted to Match Circle K Paint Schedule			



CIRCLE K VINYL COLORS
 3M 3630-33 Red
 3M 3630-3540 Tangerine

PAINT SCHEDULE (SEMI-GLOSS FINISH)
 SW #6088 Nuthatch - Grade to 30" above grade starting at front entry door. Gray to be remain horizontal and may change in elevation from starting point.
 SW #7570 Egret White - 30" above grade to bottom of fascia.



CORPORATE IDENTIFICATION SOLUTIONS

CUSTOMER
Circle K

SITE NUMBER
1651

LOCATION
Chesterfield, MO

ACCOUNT REP
Ben DeHayes

DRAWN BY
JR

DATE
03/26/19

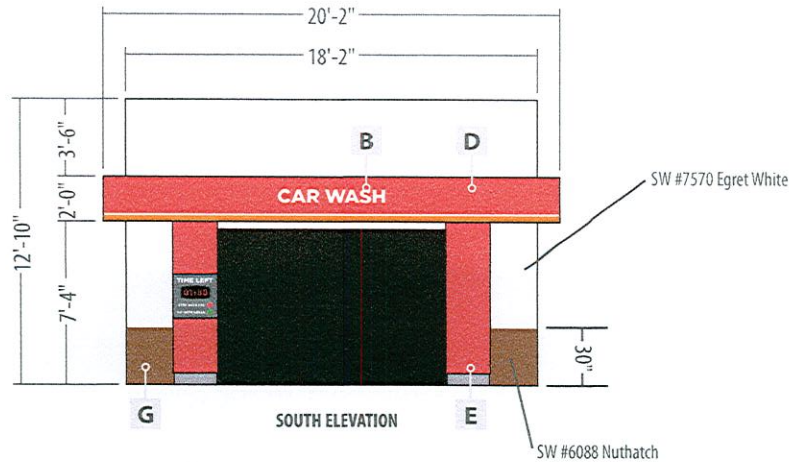
REVISION
02

SCALE
NTS

CORPORATE ID SOLUTIONS
5563 N Elston Ave.
Chicago, IL 60630
P: 773-763-9600 | F: 773-763-9606
www.CorporateIDSolutions.com

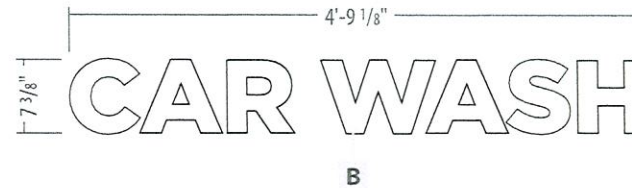
CUSTOMER ACCEPTANCE
 THIS DRAWING IS THE PROPERTY OF CORPORATE IDENTIFICATION SOLUTIONS, INC. CHICAGO, ILLINOIS, AND CONTAINS PROPRIETARY AND CONFIDENTIAL INFORMATION. THIS DRAWING IS TRANSFERRED TO THE CUSTOMER AND SUPPLIERS OF CORPORATE IDENTIFICATION SOLUTIONS, INC BY WAY OF LOAN. THIS DRAWING MAY NOT BE COPIED OR REPRODUCED, IN WHOLE OR IN PART, NOR MAY IT OR THE INFORMATION IT CONTAINS BE DISCLOSED OR TRANSFERRED TO ANY OTHER PARTY OR PERSONS WITHOUT THE PRIOR WRITTEN CONSENT OF CORPORATE IDENTIFICATION SOLUTIONS, INC.
 SIGNATURE _____ DATE _____

PROPOSED



ARTWORK REFLECTS CURRENT SURVEY

	SIGN DESCRIPTION	QTY	SIZE	AREA
A	Vinyl Circle K Decal	1	2'-0" x 5'-0 7/8"	10.1 SF
B	Vinyl Car Wash Decal	1	7 3/8" x 4'-9 1/8"	2.9 SF
C	Vinyl Exit Car Wash Decal	1	10" x 9'-6"	7.9 SF
D	Fascia Bands	1	2'-0" high	101 LF
E	Car Wash Portal Legs	4	12'-0 x 23 5/8"	23.6 SF
F	Call to Action Banner	1	3'-0" x 8'-0"	24 SF
G	Building, Bollards & Clearance Sign Painted to Match Circle K Paint Schedule			



CIRCLE K VINYL COLORS

- 3M 3630-33 Red
- 3M 3630-3540 Tangerine

PAINT SCHEDULE (SEMI-GLOSS FINISH)

- SW #6088 Nuthatch - Grade to 30" above grade starting at front entry door. Gray to be remain horizontal and may change in elevation from starting point.
- SW #7570 Egret White - 30" above grade to bottom of fascia.

SCALE: 1" = 1'-0"



CORPORATE IDENTIFICATION SOLUTIONS

CUSTOMER
Circle K

SITE NUMBER
1651

LOCATION
Chesterfield, MO

ACCOUNT REP
Ben DeHayes

DRAWN BY
JR

DATE
03/26/19

REVISION
02

SCALE
NTS

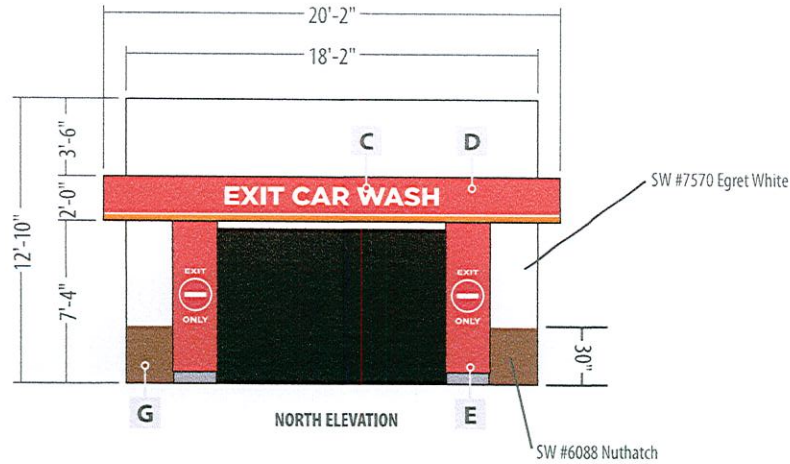
CORPORATE ID SOLUTIONS
5563 N Elston Ave.
Chicago, IL 60630
P: 773-763-9600 | F: 773-763-9606
www.CorporateIDSolutions.com

CUSTOMER ACCEPTANCE

THIS DRAWING IS THE PROPERTY OF CORPORATE IDENTIFICATION SOLUTIONS, INC., CHICAGO, ILLINOIS, AND CONTAINS PROPRIETARY AND CONFIDENTIAL INFORMATION. THIS DRAWING IS TRANSFERRED TO THE CUSTOMERS AND SUPPLIERS OF CORPORATE IDENTIFICATION SOLUTIONS, INC. BY WAY OF LOAN. THIS DRAWING MAY NOT BE COPIED OR REPRODUCED, IN WHOLE OR IN PART, NOR MAY IT OR THE INFORMATION IT CONTAINS BE DISCLOSED OR TRANSFERRED TO ANY OTHER PARTY OR PERSONS WITHOUT THE PRIOR WRITTEN CONSENT OF CORPORATE IDENTIFICATION SOLUTIONS, INC.

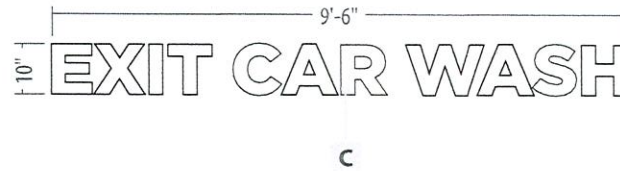
SIGNATURE _____ DATE _____

PROPOSED



ARTWORK REFLECTS CURRENT SURVEY

	SIGN DESCRIPTION	QTY	SIZE	AREA
A	Vinyl Circle K Decal	1	2'-0" x 5'-0 7/8"	10.1 SF
B	Vinyl Car Wash Decal	1	7 3/8" x 4'-9 1/8"	2.9 SF
C	Vinyl Exit Car Wash Decal	1	10" x 9'-6"	7.9 SF
D	Fascia Bands	1	2'-0" high	101 LF
E	Car Wash Portal Legs	4	12'-0" x 23 5/8"	23.6 SF
F	Call to Action Banner	1	3'-0" x 8'-0"	24 SF
G	Building, Bollards & Clearance Sign Painted to Match Circle K Paint Schedule			



CIRCLE K VINYL COLORS
 3M 3630-33 Red
 3M 3630-3540 Tangerine

PAINT SCHEDULE (SEMI-GLOSS FINISH)
 SW #6088 Nuthatch - Grade to 30" above grade starting at front entry door. Gray to be remain horizontal and may change in elevation from starting point.
 SW #7570 Egret White - 30" above grade to bottom of fascia.

SCALE: 1/2" = 1'-0"



CORPORATE IDENTIFICATION SOLUTIONS

CUSTOMER
Circle K
 SITE NUMBER
1651

LOCATION
Chesterfield, MO
 ACCOUNT REP
Ben DeHayes

DRAWN BY
JR
 DATE
03/26/19
 REVISION
02
 SCALE
NTS

CORPORATE ID SOLUTIONS
 5563 N Elston Ave.
 Chicago, IL 60630
 P: 773-763-9600 | F: 773-763-9606
 www.CorporateIDSolutions.com

CUSTOMER ACCEPTANCE
 THIS DRAWING IS THE PROPERTY OF CORPORATE IDENTIFICATION SOLUTIONS, INC., CHICAGO, ILLINOIS, AND CONTAINS PROPRIETARY AND CONFIDENTIAL INFORMATION. THIS DRAWING IS TRANSFERRED TO THE CUSTOMERS AND SUPPLIERS OF CORPORATE IDENTIFICATION SOLUTIONS, INC. BY WAY OF LOAN. THIS DRAWING MAY NOT BE COPIED OR REPRODUCED, IN WHOLE OR IN PART, NOR MAY IT OR THE INFORMATION IT CONTAINS BE DISCLOSED OR TRANSFERRED TO ANY OTHER PARTY OR PERSONS WITHOUT THE PRIOR WRITTEN CONSENT OF CORPORATE IDENTIFICATION SOLUTIONS, INC.
 SIGNATURE _____ DATE _____