

VILA



Memorandum Planning & Development Services Division

To: Planning Commission

From: John Boyer, Senior Planner

PC Date: June 8, 2015

RE: **Spirit Valley Business Park, Lot 7 (Site Development Section Plan – The Place):** A Site Development Section Plan, Landscape Plan, Lighting Plan, Architectural Elevations and Architect’s Statement of Design for a 2.9 acre tract of land zoned “PI” Planned Industrial District located southeast of the intersection of Spirit Valley West Drive and Spirit Valley Central Drive.

Request

On October 13, 2014, the Planning Commission voted to approve the above Site Development Section Plan 8-0. While the plan was approved by the Planning Commission, the City’s Unified Development Code requires that all Site Development Plans be recorded no later than 60 days after the approval of the plan by the City. After the required 60 days, this plan was not recorded and Staff notified the applicant that the Site Development Section Plan approval is void and re-approval is required by the Planning Commission. On May 15, 2015, City Staff received a re-application for the above project for re-approval.

After review by Staff, the submittal has been found to be the exact plan (lighting, landscaping, elevations, etc.) reviewed and approved by Planning Commission in October 2014. Staff respectively requests the Site Development Section Plan for Spirit Valley Business Park Lot 7 “The Place” be re-approved. For your convenience, a copy of the Planning Commission Staff Report from the October 13, 2014 meeting is included which outlines the proposal as well as the Site Development Section Plan, Landscape Plan, Lighting Plan, Architectural Elevations and Architect’s Statement of Design for “The Place”.

Respectfully submitted,

A handwritten signature in black ink, appearing to be 'J. Boyer', written over a horizontal line.

John Boyer
Senior Planner

cc: Aimee Nassif, Planning and Development Services Director

Attachments: Planning Commission Report and packet from October 13, 2014



V.I.L.D.

690 Chesterfield Pkwy W • Chesterfield MO 63017-0760
Phone: 636-537-4000 • Fax 636-537-4798 • www.chesterfield.mo.us

Planning Commission Staff Report

Project Type: Site Development Section Plan

Meeting Date: October 13, 2014

From: John Boyer
Senior Planner

Location: 600 Spirit Valley East Drive

Applicant: ACI Boland Architects and Stock & Associates Consulting Engineers, Inc.

Description: **Spirit Valley Business Park, Lot 7 (Site Development Section Plan – The Place):** A Site Development Section Plan, Landscape Plan, Lighting Plan, Architectural Elevations and Architect’s Statement of Design for a 2.9 acre tract of land zoned “PI” Planned Industrial District located southeast of the intersection of Spirit Valley West Drive and Spirit Valley Central Drive.

PROPOSAL SUMMARY

The request is for construction of a 53,582 square foot luxury automotive/watercraft storage facility. The subject site is zoned “PI” Planned Industrial District and is governed under the terms and conditions of City of Chesterfield Ordinance 2745.

ZONING HISTORY OF SUBJECT SITE

The subject site was originally zoned “NU” Non-Urban District by St. Louis County in 1965 prior to the incorporation of the City of Chesterfield. The site was then rezoned from “NU” Non-Urban District to “PI” Planned Industrial District in June of 2007 under the terms and conditions of the City of Chesterfield Ordinance 2373. In May of 2013, the ordinance was amended to allow for an additional permitted use of kennels to the “Animal hospital, veterinary clinics and kennels” use.

SURROUNDING ZONING

Direction	Land Use	Zoning
North	Vacant	“PI” Planned Industrial District
South	Spirit of St. Louis Airport	“M-3” Planned Industrial District
East	Vacant	“PI” Planned Industrial District
West	Vacant	“PI” Planned Industrial District

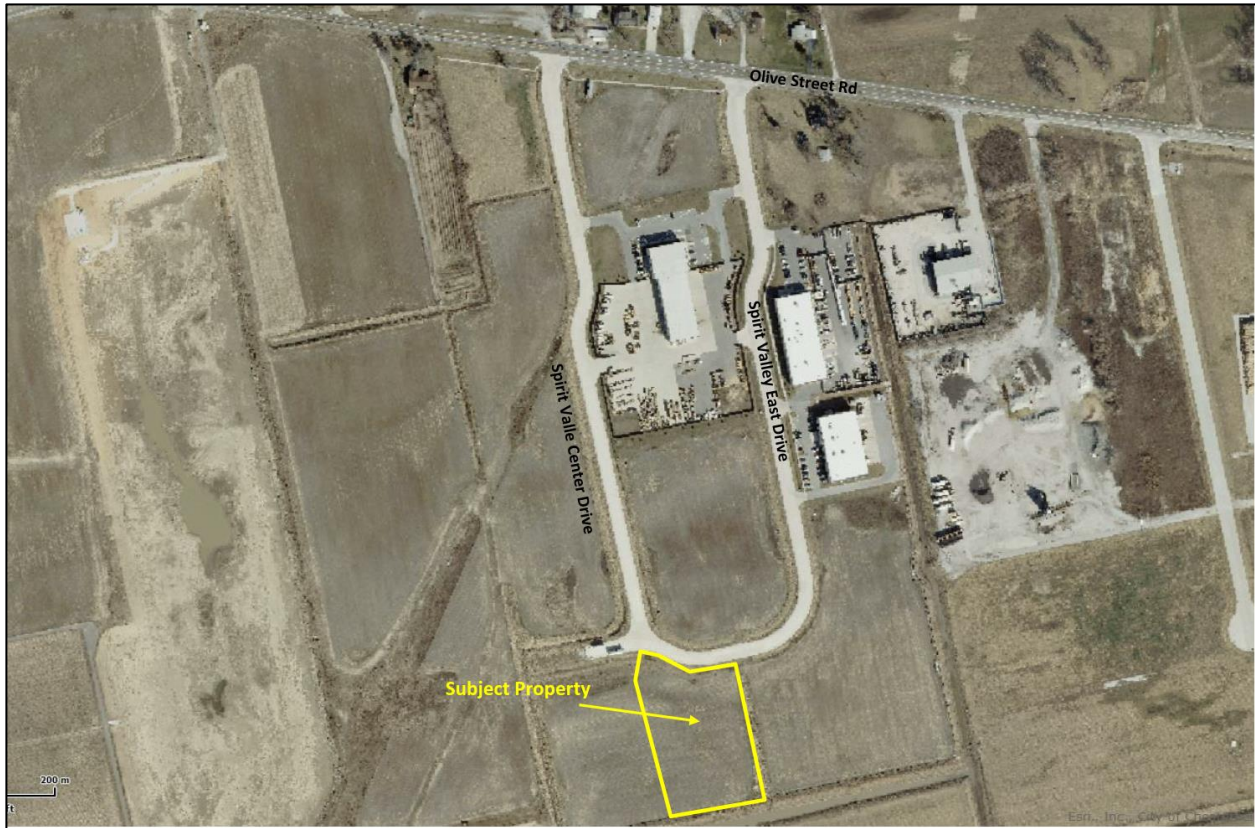


Figure 1: Aerial Photo

STAFF ANALYSIS

Zoning

The subject site is currently zoned "PI" Planned Industrial District under the terms and conditions of the City of Chesterfield Ordinance Number 2745. The submittal was reviewed against the requirements of the governing ordinance and all applicable Unified Development Code requirements.

Site Relationship

This is a 2.9 acre tract located on the south end of the Spirit Valley Business Park development. The 53,582 square feet of structure is split into two buildings: an interior unit and a second unit which wraps around the perimeter of the parcel in a backward "C" shape.

Traffic Access & Circulation

Proposed access to the site will be via a shared entrance point between the subject site and Lot 6 to the west compliant with the approved Amended Site Development Concept Plan. Parking for the facility will be in the front near the entrance. Internal access is provided via a private drive which will serve the facility.

Parking

As mentioned in the above Traffic Access & Circulation section, parking is proposed near the entrance to the parcel. All parking depicted on the submitted Site Development Section Plan is compliant with the City Unified Development Code for the proposed use of car and boat storage only.

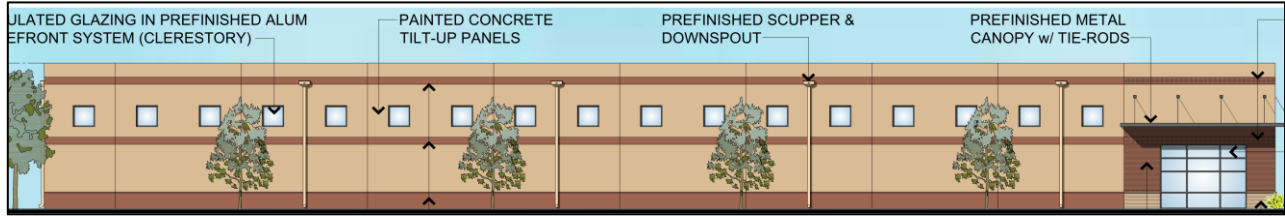


Figure 2: Exterior Elevation

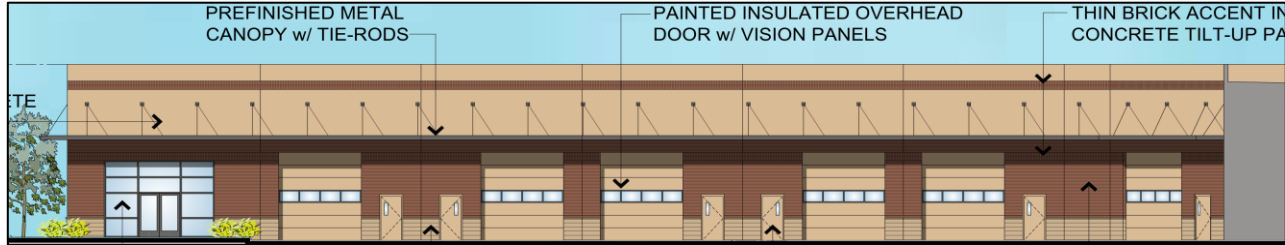


Figure 3: Interior Elevation

Architectural Elevations

The applicant is proposing two twenty-eight (28) foot one-story structures similar in height and scale with other existing structures within the development. Concrete tilt-up panels will be used with exterior elevations banded with complementary colors which visually reduce the overall height of the building. Example of the banding can be seen above in Figure 2. The interior of the elevations will utilize masonry bases and brick veneer in addition to the tilt-up concrete design. Figure 3 above represents the proposed interior elevation. The office corner in the lower right hand of Figure 2 indicates that the brick and masonry element is planned to wrap to the northern elevation signifying the entrance/office element of this planned structure. Mechanical equipment will be roof mounted and will be screened by a parapet.

Elevations associated with this planned development were reviewed by the Architectural Review Board (ARB) on August 14, 2014. No amendments were made by the ARB and the application was recommended for approval as submitted to the Planning Commission 5-0.

Landscaping, Screening and Fencing

All landscaping as identified on the submitted Landscape Plan is compliant with the Tree Preservation and Landscape Requirements of the City of Chesterfield. A combination of deciduous, coniferous and shrubs/bushes have been utilized throughout the exterior of the site. The planned storm-water bio-retention on the north and south ends of the site is also planned to be landscaped per MSD requirements, which will add to the overall landscaping of this project. A trash enclosure is planned with this proposed construction. The enclosure, per the Statement of Design and Elevations, will match the material and color of the proposed main structure.

Two types of fencing material are proposed associated with this development; 1) a 6 foot black architectural aluminum fence with gate and 2) a 6 foot black vinyl coated chain-link fence(see Figure 4 for location of material change). The aluminum fence with gate portion will have the most public visibility, versus the

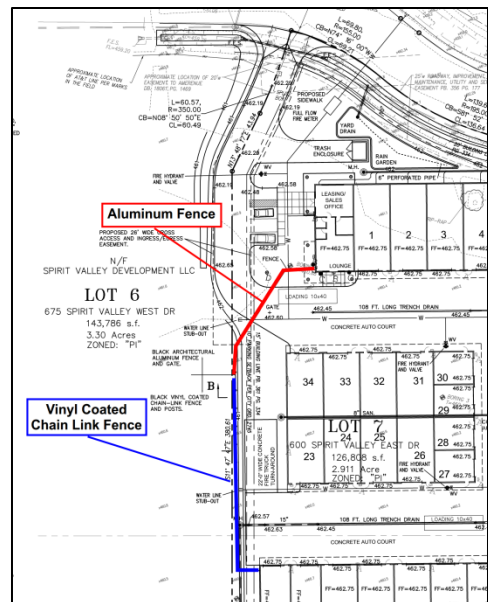


Figure 4: Fence Material Exhibit

chain link fence which will border the site and provide a more utilitarian security purpose. The details of these materials can be seen on page SDSP-2 of the plan submittal. Both fence proposals are compliant with the Unified Development Code concerning fencing in an industrial area.

Lighting

Lighting is proposed to use a combination of wall mounted pack lights near the access points of the individual units interior to the site, decorative accent wall lighting near the office entrance (C) and one bollard light (D) with a similar decorative head as ‘C’ adjacent to the shared access point. All the wall pack lights would face downward and are compliant with City Code.

Details on planned site lighting are included for the Planning Commission’s review and comment. All accent lighting proposed is compliant with City Code. The provided photometric plan indicates all lights are compliant with City of Chesterfield foot-candle standards.

DEPARTMENT INPUT

Staff has reviewed the Site Development Section Plan, Landscape Plan, Lighting Plan, Architectural Elevations and Architect’s Statement of Design. Staff has found the application to be in conformance with the site specific ordinance and all other applicable City of Chesterfield requirements. Staff recommends approval of the proposal as presented.

MOTION

The following options are provided to the Planning Commission for consideration relative to this application:

- 1) “I move to approve (or deny) the Site Development Section Plan, Landscape Plan, Lighting Plan, Architectural Elevations, and Architect’s Statement of Design for Spirit Valley Business Park, Lot 7 (The Place).”

- 2) “I move to approve the Site Development Section Plan, Landscape Plan, Lighting Plan, Architectural Elevations, and Architect’s Statement of Design for Spirit Valley Business Park, Lot 7 (The Place)...”
(Conditions may be added, eliminated, altered or modified)

CC: Aimee Nassif, Planning and Development Services Director

Attachments: Architect’s Statement of Design
Site Development Section Plan
Landscape Plan
Architectural Elevations
Lighting Plan



July 16, 2014

Aimee Nassif, AICP
Planning and Development Services Director
City of Chesterfield
690 Chesterfield Parkway West
Chesterfield, Missouri 63005

ACI BOLAND ARCHITECTS – ST. LOUIS
11477 Olde Cabin Road, Suite 100
St. Louis, Missouri 63141
T.314.991.9993
F.314.991.8878

Re: Spirit Valley Business Park, Lot 7 (The Place) - Chesterfield, Missouri
ACI Boland Project No. 214039

Dear Ms. Nassif:

We are pleased to submit the following project to The City of Chesterfield Architectural Review Board for their consideration. We have included in this Statement of Design listed below regarding how we plan to address each of the pertinent design standards as part of the design submittal requirements.

STATEMENT OF DESIGN INTENT

General Requirements for Site Design

Site Relationship

The building is situated on Spirit Valley West south of Olive Street Road and north of the Spirit of St. Louis Airport. The facility entrance will face Spirit Valley West to the north. The entrance to this development will utilize a single curb-cut entrance on Spirit Valley West. This single curb-cut entrance will allow for entrance to Lot 6 to the west in the future to limit the curb-cuts on Spirit Valley West.

Circulation System and Access

The building is situated in the middle of the site with a single access drive into the facility. The visitor parking is located on the west side of the building before the security gate with a landscaped foreground area to help buffer the building sales entrance from the visitor parking area. The accessible parking spaces are located directly in front of the building allowing easy and safe access without needing to cross any drive lanes. Inside the secured area of the facility the access drive is a "U" shape with a paved fire truck turn-around provided for the Monarch Fire Department at their request.

Topography

The existing site is relatively flat and vacant. The site has no substantial vegetation worth retaining currently. A portion of the Monarch Levee Drainage System is located to the south of the lot.

Retaining Walls

We are currently not proposing the use or need of any site retaining walls in this project at this time.

General Requirements for Building Design

Scale

These single story buildings are designed in scale to complement the other existing buildings in the Spirit Valley Business Park. The buildings have been carefully designed with the use of several horizontal accent bands to reduce the scale of the building from the street and throughout the facility. We have also incorporated metal canopies at the building entrances and at each of the condominium entrances help achieve the sense of human scale.

Design

The two buildings will be a single story condominium development constructed of concrete tilt-up panels. The "exterior" of the development will be mainly painted concrete panels to provide for some discretion and privacy as to the nature of the development. The entrance corner and the "interior" of the development will be brick veneer, masonry bases, glass storefronts and painted concrete panels above the prefinished metal canopies and overhead doors. We have also included the use of clerestory windows around the exterior perimeter to allow for natural light into each of the spaces. All the faces of the building have been designed to be coordinated in regards to the material and detailing. The building will also include an extended parapet to screen the mechanical equipment on the roof of the structure.

Materials and Colors

The exterior design will be predominantly brick veneer while incorporating masonry bases into the look of the building to create an elegant and sophisticated appearance to complement the owners of each of the condominium spaces available. We are also planning to use prefinished metal canopies at the entry elements. The full-height window openings along the north, west and south side will be insulated tinted glass in prefinished aluminum storefront. All of the materials have been selected to be subdued and reserved.

Please refer to the exterior rendering and the larger material samples to be submitted at the Architectural Review board meeting.

Landscape Design and Screening

The site has been carefully landscaped with trees and other scrubs/plantings to compliment the scale and reduce the impact of the building from Spirit Valley West Drive and create a consistent theme throughout the development. The building will also include a landscaped area near the front doors to create an inviting plaza area for the visitors. We have also landscaped the two Metropolitan Sewer District's required water quality sand bed filter on the north and south side of the site to compliment the entire development and create pleasing environment.

Please refer to the submitted Landscape Plan for more information.

The building's trash container will be screened from vision by the use of screen walls, gates and evergreen trees. The enclosure will be constructed to give the feel of a unified consistent appearance through the use of matching materials to the building. The enclosure will have wood sight-proof swing gates that will face the west, away from all of the vehicle traffic to the north.

June 16, 2014
Aimee Nassif
City of Chesterfield
ACI Boland Proposal No. 214039
Page 3

Signage

We understand that signage review is not part of this process and is will be reviewed at a later date if the owner wishes to incorporate any signage as part of the development. Any signage submitted at that time will be designed to meet the City of Chesterfield Code.

Lighting

We understand that site lighting is not part of the Architectural Review Board submittal and is reviewed through a separate process. We have however included a Site Lighting Plan and fixture cut-sheet for your reference.

Once again, we are please to be continuing our relationship with the City of Chesterfield through the development of your wonderful city. If should need any additional information or have questions, please feel free to call me.

Respectfully Submitted,

ACI Boland Architects

A handwritten signature in black ink, appearing to read 'Kristopher T. Mehtens', with a long horizontal flourish extending to the right.

Kristopher T. Mehtens, LEED AP
Project Manager

Attachments:

City of Chesterfield – Architectural Review Board Project Statistics and Checklist



ARCHITECTURAL RENDERING
OVERALL AERIAL VIEW

214039 - 07.16.2014



ARCHITECTURAL RENDERING
SALES ENTRY / VISITOR PARKING AREA



ARCHITECTURAL RENDERING
INTERIOR MOTORCOURT AREA

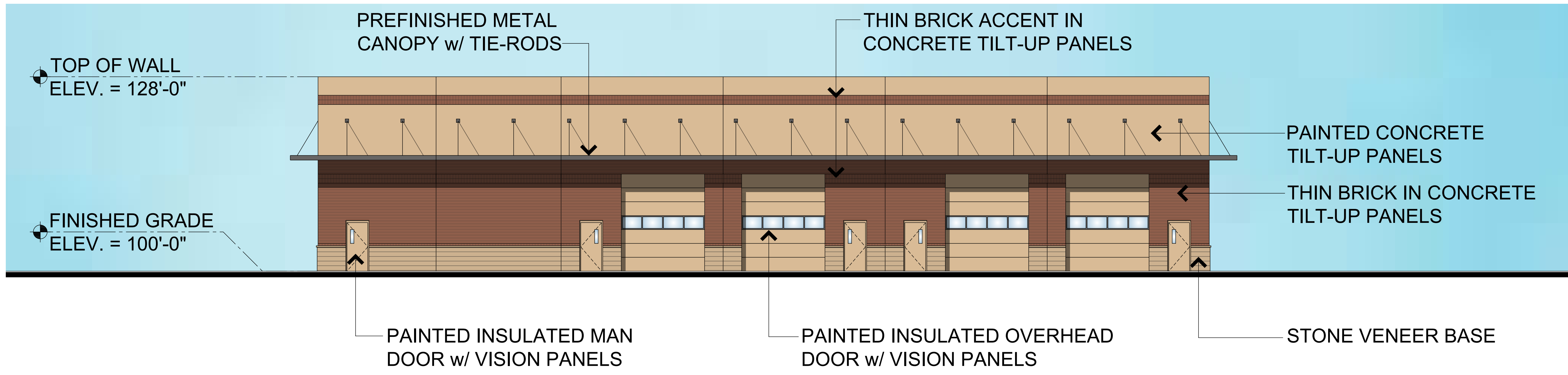
214039 - 07.16.2014



The Place
600 Spirit Valley East Drive
Chesterfield, Missouri 63005

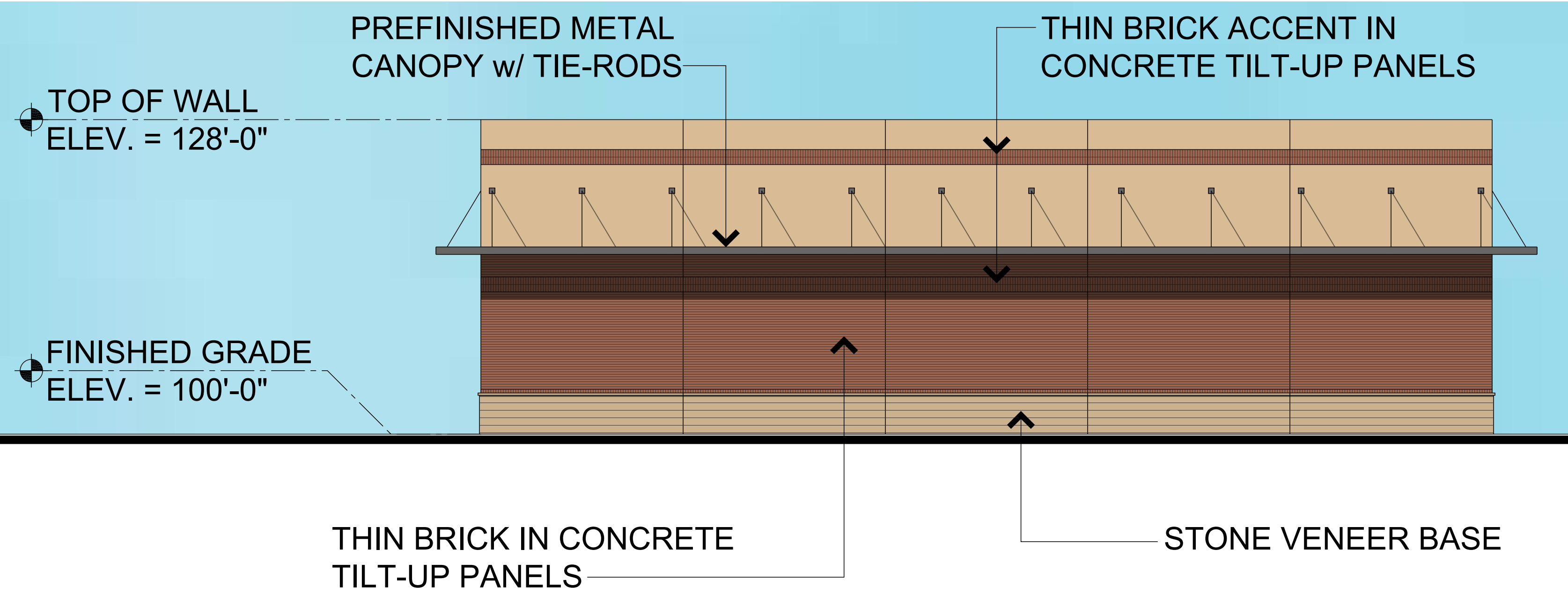
11477 Olde Cabin Road | Suite 100
St. Louis, Missouri 63141
T: 314.991.9993
aciboland.com





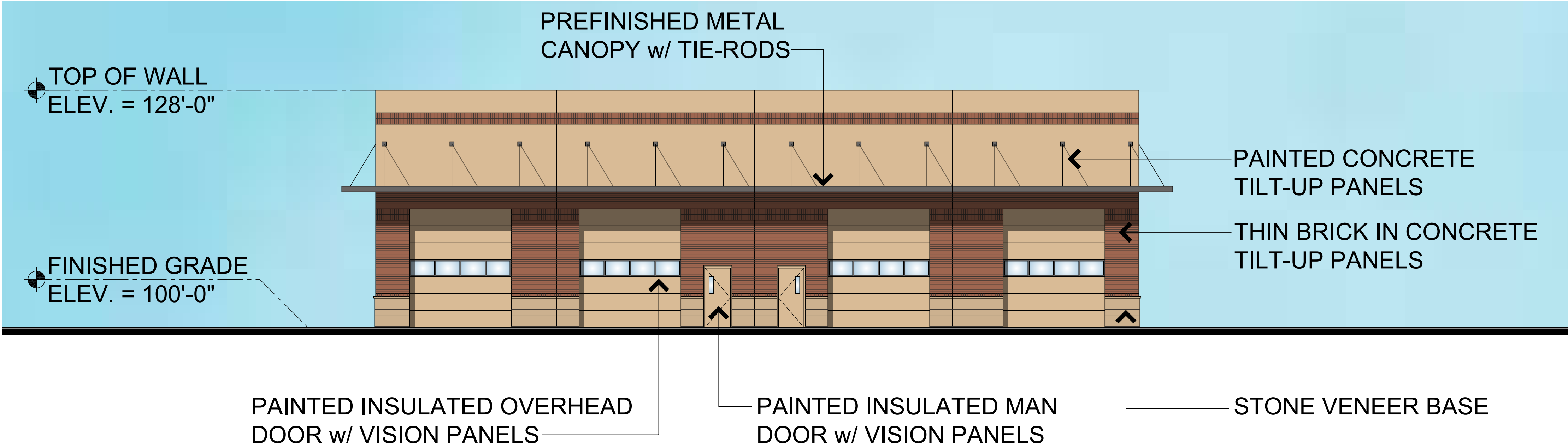
BLDG A NORTH ELEVATION

SCALE: 1/8" = 1'-0"



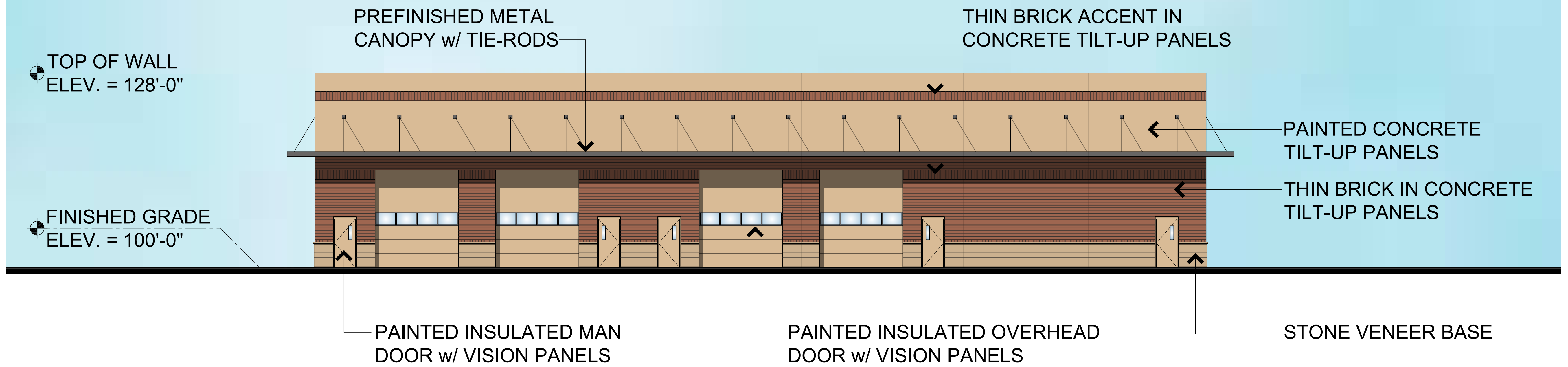
BLDG A WEST ELEVATION

SCALE: 1/8" = 1'-0"



BLDG A EAST ELEVATION

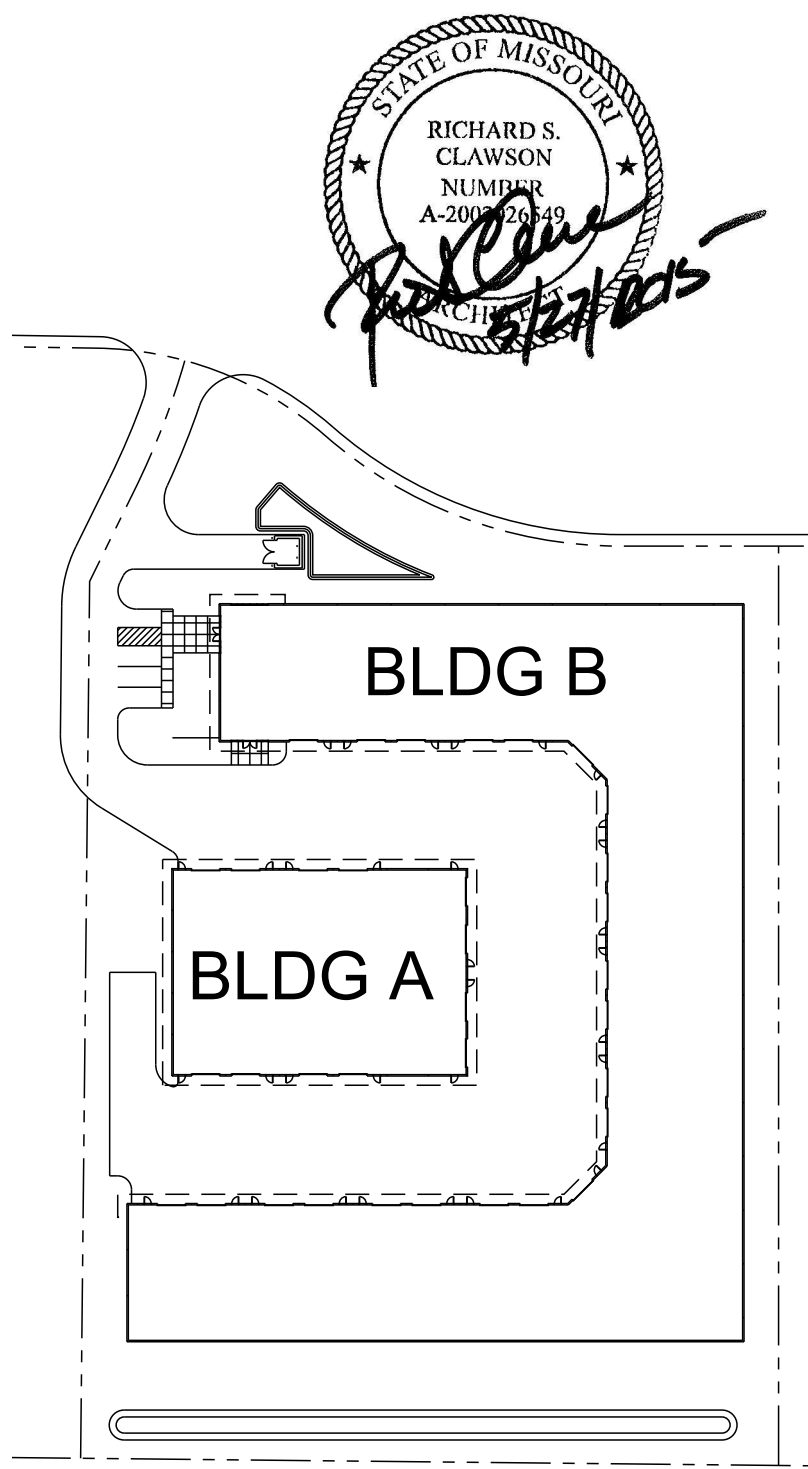
SCALE: 1/8" = 1'-0"



BLDG A SOUTH ELEVATION

SCALE: 1/8" = 1'-0"

- FIELD PAINT
SW 6107 NOMADIC DESERT
- ACCENT PAINT
SW 2837 AURORA BROWN



SITE KEY PLAN
NOT TO SCALE

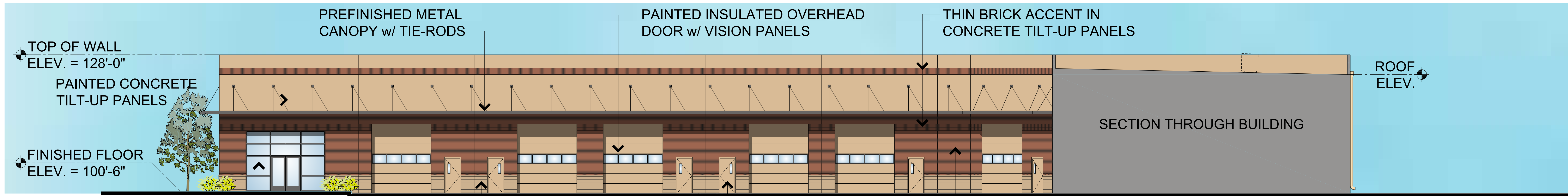
214039 - 05.27.2015



The Place
600 Spirit Valley East Drive
Chesterfield, Missouri 63005

11477 Olde Cabin Road | Suite 100
St. Louis, Missouri 63141
T: 314.991.9993
aciboland.com





PREFINISHED METAL CANOPY w/ TIE-RODS
 PAINTED INSULATED OVERHEAD DOOR w/ VISION PANELS
 THIN BRICK ACCENT IN CONCRETE TILT-UP PANELS

TOP OF WALL ELEV. = 128'-0"

PAINTED CONCRETE TILT-UP PANELS

FINISHED FLOOR ELEV. = 100'-6"

ROOF ELEV.

SECTION THROUGH BUILDING

1" INSULATED GLAZING IN PREFINISHED ALUM STOREFRONT SYSTEM

STONE VENEER BASE

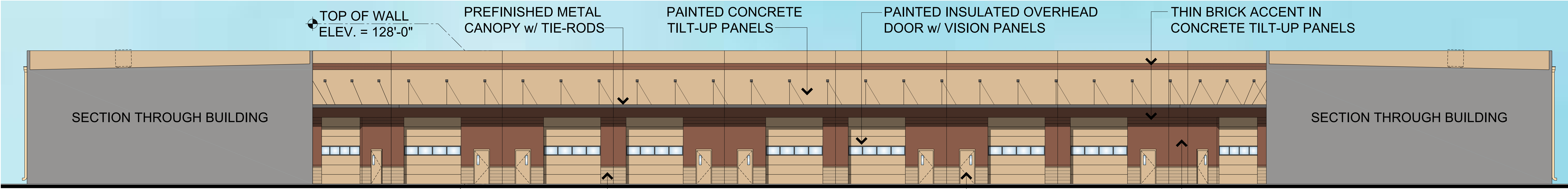
FINISHED GRADE ELEV. = 100'-0"

PAINTED INSULATED MAN DOOR w/ VISION PANELS

THIN BRICK IN CONCRETE TILT-UP PANELS

BLDG B SOUTH ELEVATION

SCALE: 1/8" = 1'-0"



TOP OF WALL ELEV. = 128'-0"

PREFINISHED METAL CANOPY w/ TIE-RODS

PAINTED CONCRETE TILT-UP PANELS

PAINTED INSULATED OVERHEAD DOOR w/ VISION PANELS

THIN BRICK ACCENT IN CONCRETE TILT-UP PANELS

SECTION THROUGH BUILDING

SECTION THROUGH BUILDING

FINISHED GRADE ELEV. = 100'-0"

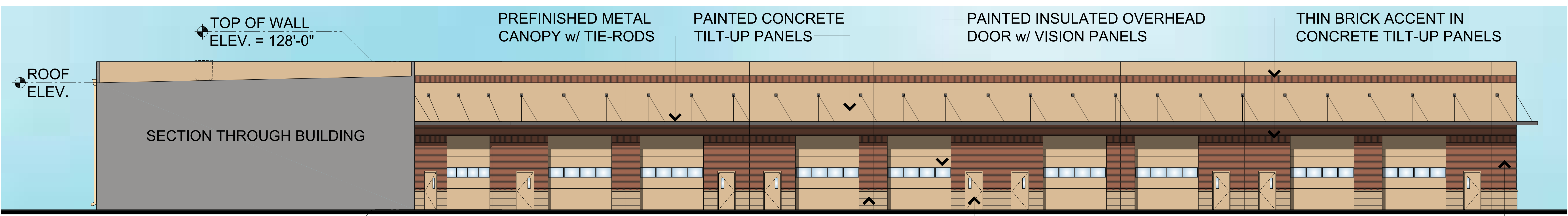
STONE VENEER BASE

PAINTED INSULATED MAN DOOR w/ VISION PANELS

THIN BRICK IN CONCRETE TILT-UP PANELS

BLDG B WEST ELEVATION

SCALE: 1/8" = 1'-0"



TOP OF WALL ELEV. = 128'-0"

PREFINISHED METAL CANOPY w/ TIE-RODS

PAINTED CONCRETE TILT-UP PANELS

PAINTED INSULATED OVERHEAD DOOR w/ VISION PANELS

THIN BRICK ACCENT IN CONCRETE TILT-UP PANELS

ROOF ELEV.

SECTION THROUGH BUILDING

FINISHED GRADE ELEV. = 100'-0"

STONE VENEER BASE

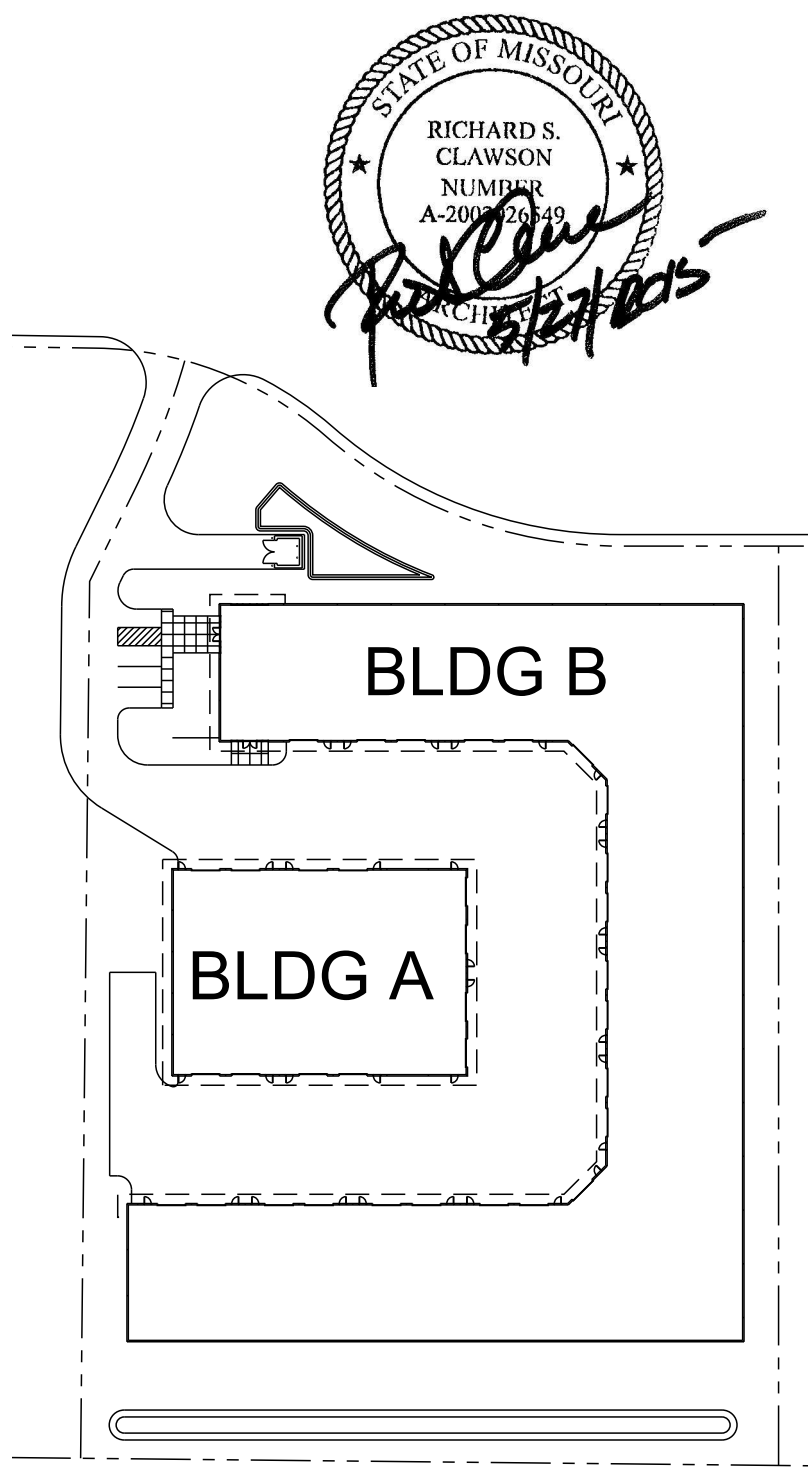
PAINTED INSULATED MAN DOOR w/ VISION PANELS

THIN BRICK IN CONCRETE TILT-UP PANELS

BLDG B NORTH ELEVATION

SCALE: 1/8" = 1'-0"

- FIELD PAINT
SW 6107 NOMADIC DESERT
- ACCENT PAINT
SW 2837 AURORA BROWN



SITE KEY PLAN
NOT TO SCALE

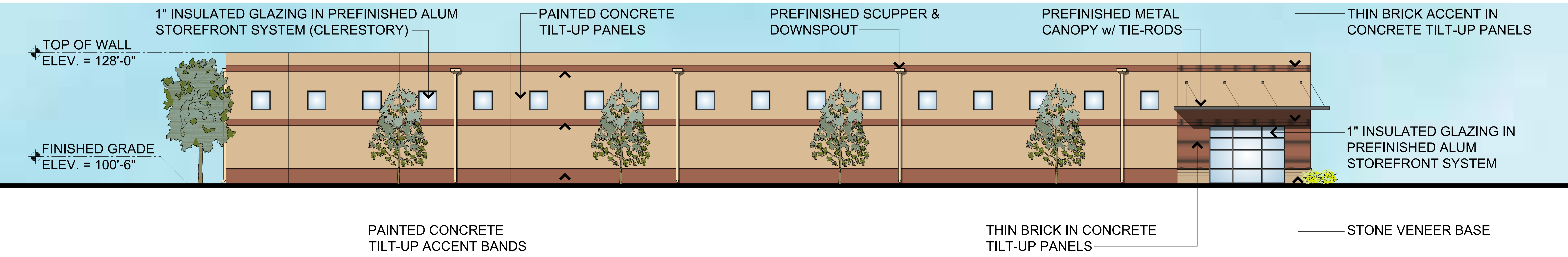
214039 - 05.27.2015



The Place
 600 Spirit Valley East Drive
 Chesterfield, Missouri 63005

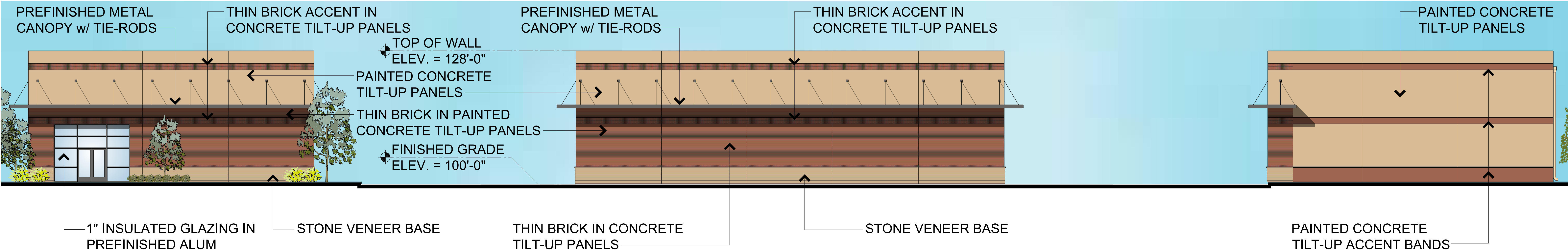
11477 Olde Cabin Road | Suite 100
 St. Louis, Missouri 63141
 T: 314.991.9993
 aciboland.com





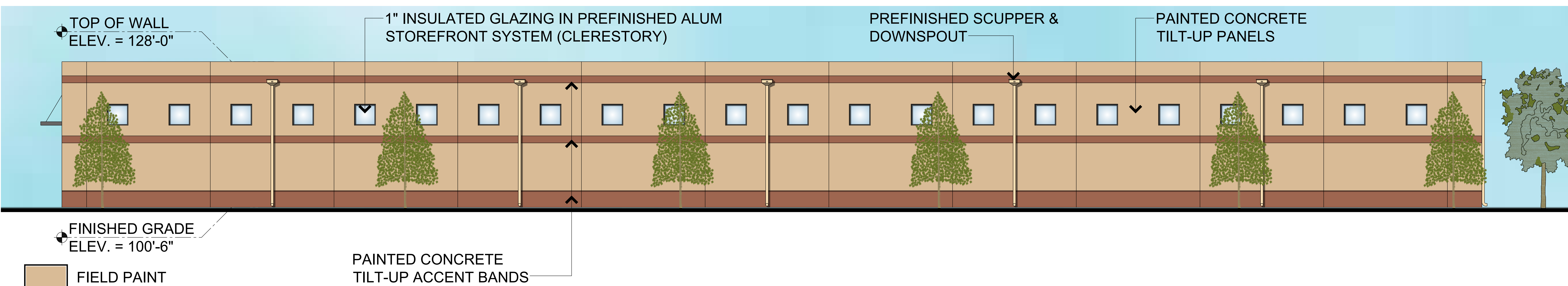
BLDG B NORTH ELEVATION

SCALE: 1/8" = 1'-0"



BLDG A&B WEST ELEVATION

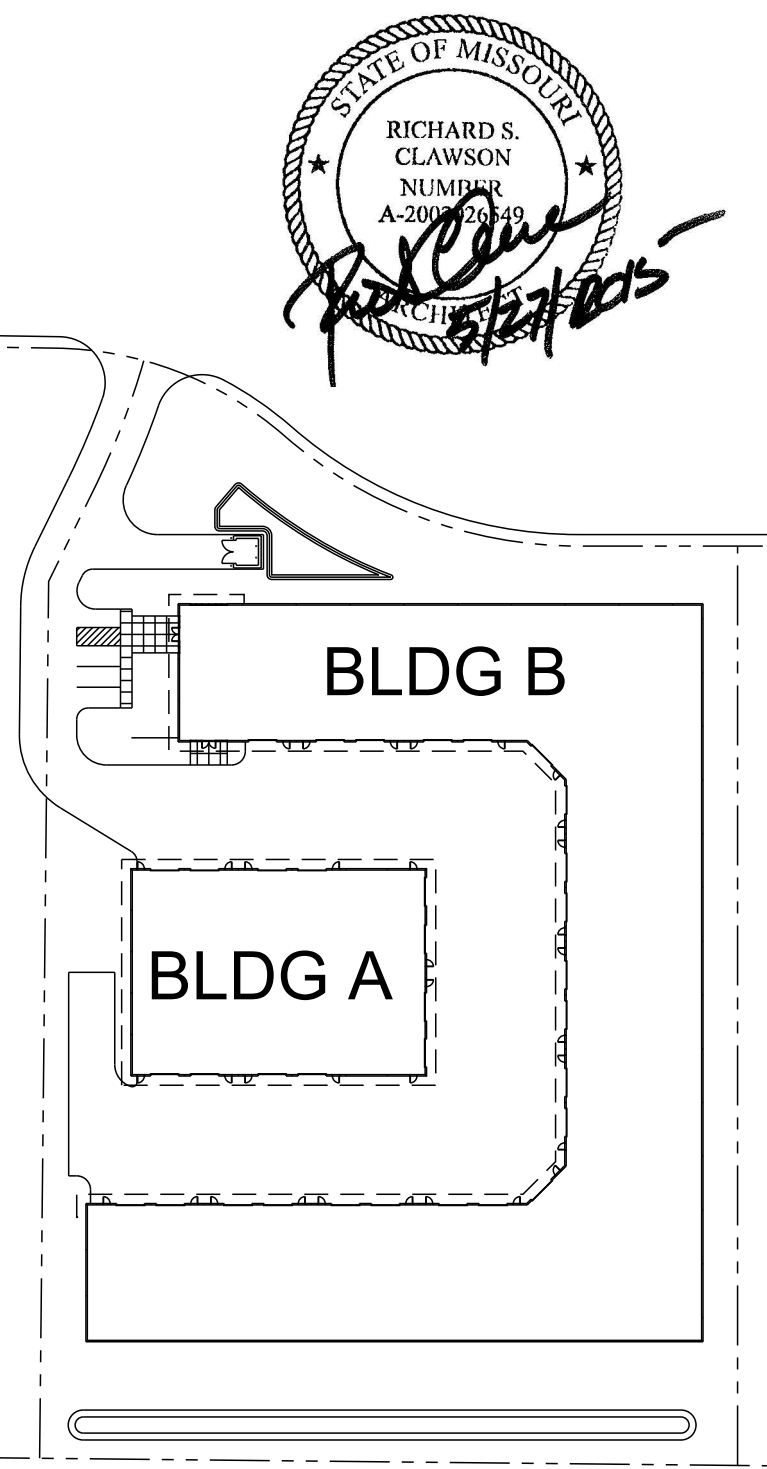
SCALE: 1/8" = 1'-0"



BLDG B SOUTH ELEVATION

SCALE: 1/8" = 1'-0"

- FIELD PAINT
SW 6107 NOMADIC DESERT
- ACCENT PAINT
SW 2837 AURORA BROWN



SITE KEY PLAN
NOT TO SCALE

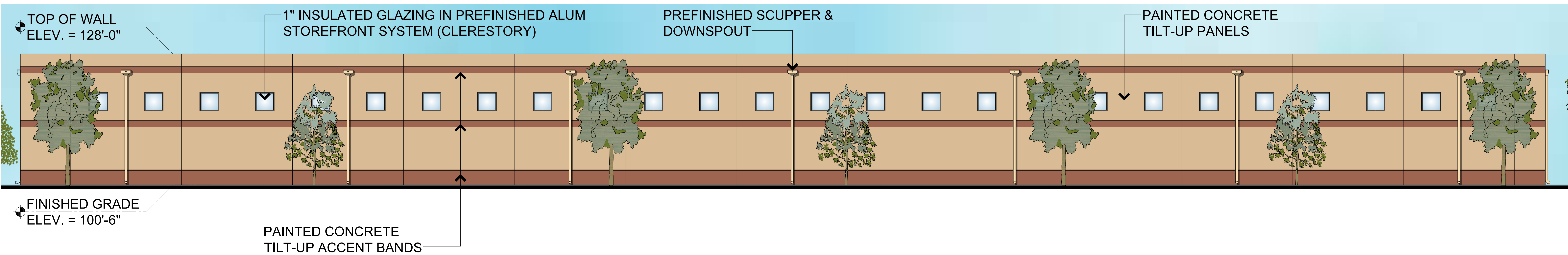
214039 - 05.27.2015



The Place
600 Spirit Valley East Drive
Chesterfield, Missouri 63005

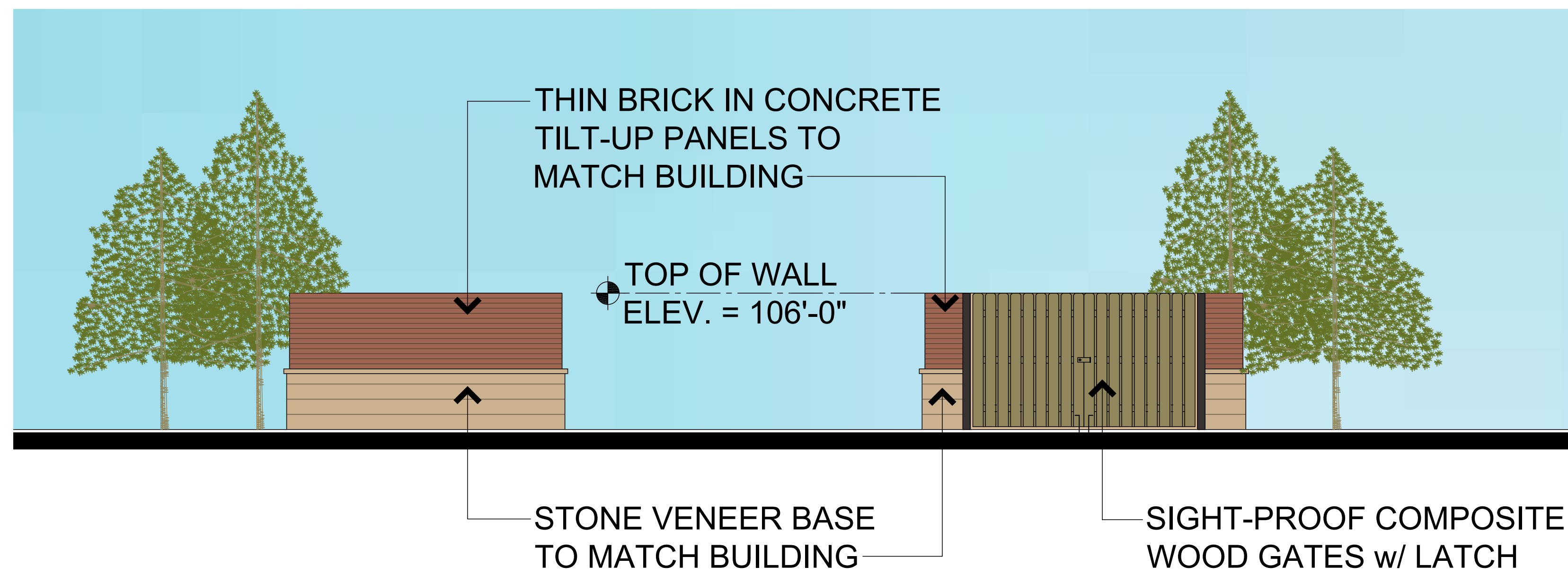
11477 Olde Cabin Road | Suite 100
St. Louis, Missouri 63141
T: 314.991.9993
aciboland.com





BLDG B EAST ELEVATION

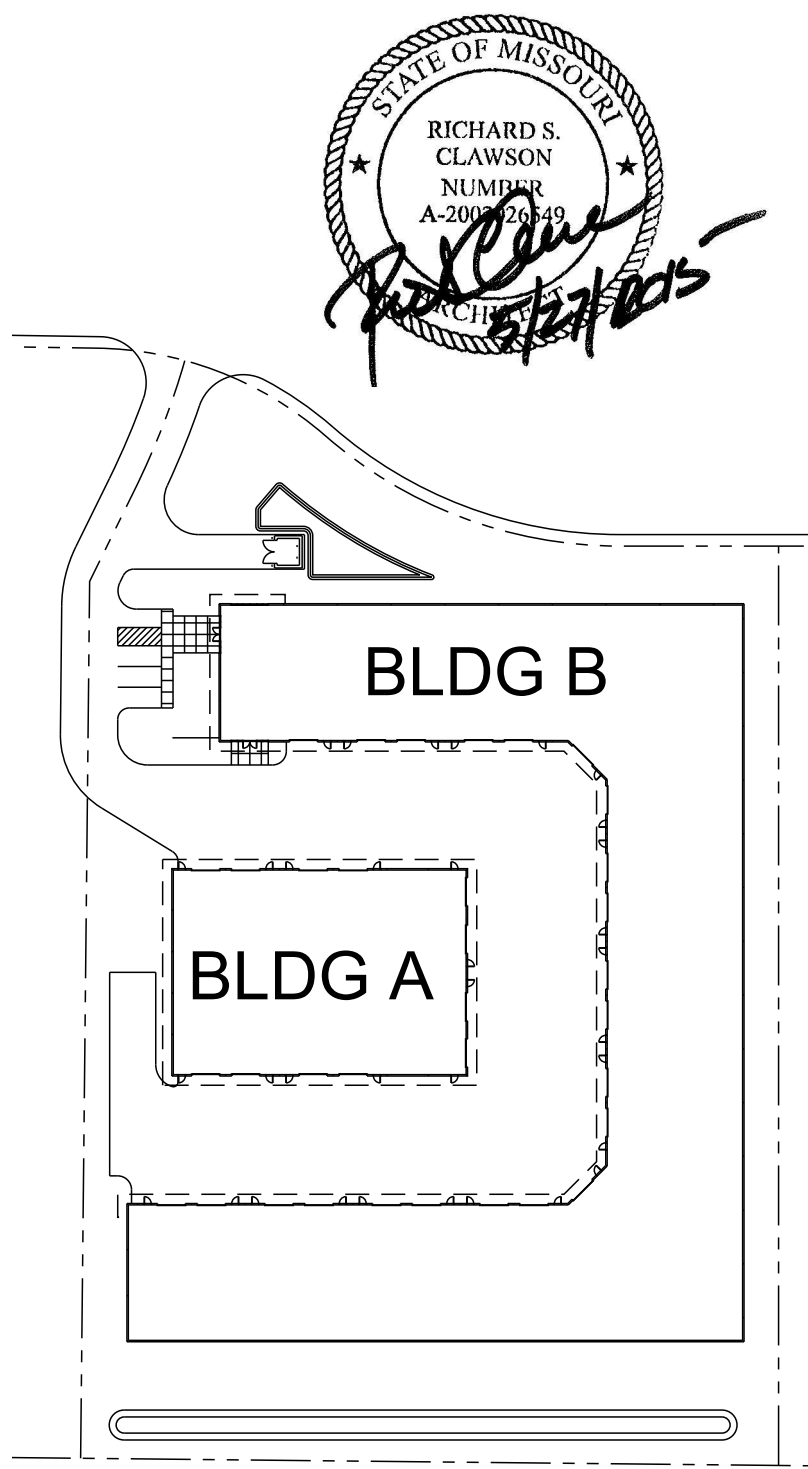
SCALE: 1/8" = 1'-0"



TRASH ENCLOSURE ELEVATION

SCALE: 1/4" = 1'-0"

- FIELD PAINT
SW 6107 NOMADIC DESERT
- ACCENT PAINT
SW 2837 AURORA BROWN



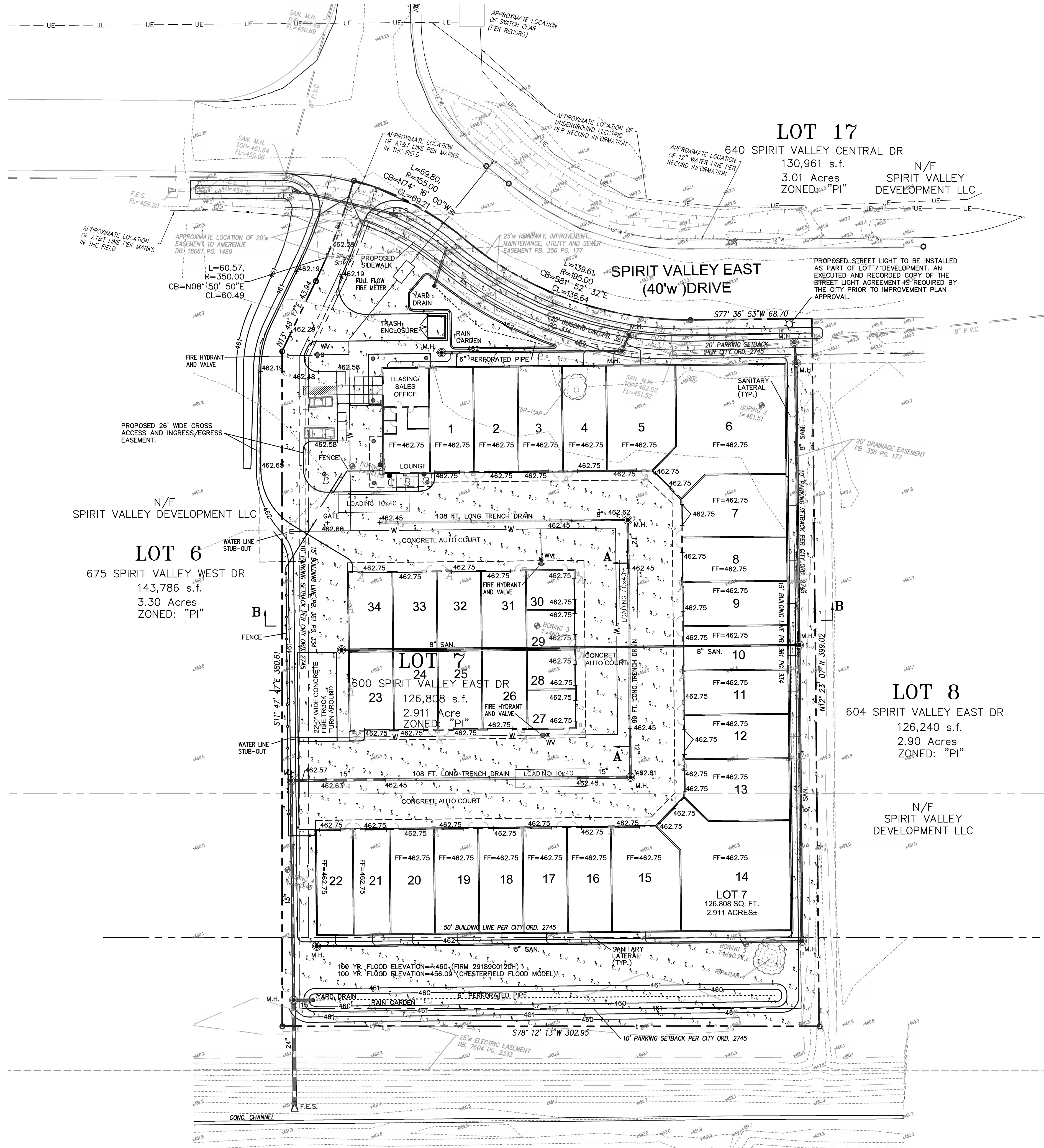
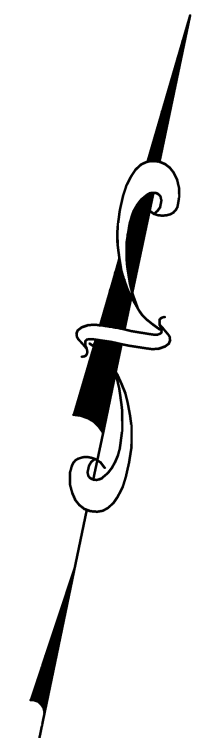
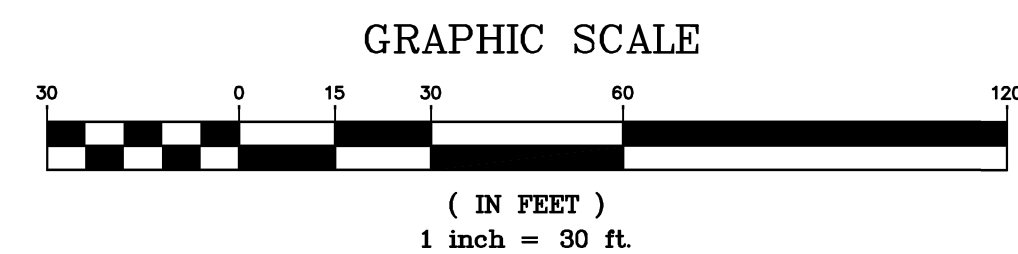
SITE KEY PLAN
NOT TO SCALE

214039 - 05.27.2015

Label	Units	Min	Max	Min	Max
All Circles	PC	2.15	5.6	0.0	8.4
Utility	PC	5.33	3.4	1.0	3.25
Main Entrance	PC	2.51	5.5	1.0	2.51

Symbol	Qty	Label	Description	Unit	Quantity	Unit	Quantity
1	1	A	WALL MOUNTED AT 18" AFD	15458	0.720	250	
2	1	B	WALL MOUNTED AT 22" AFD	13394	0.720	250	
3	1	C	WALL MOUNTED AT 30" AFD	13394	0.720	250	
4	1	D	42 INCH HOLLAND	1931	0.900	37.7	

IEC
 Filename: The Place Auto Storage (HID).AGI
 Date: 8/15/2014
 Calculations Provided by Luikart-Eason-Calcatera & Co.
 11088 Millpark Dr. Suite 120 Maryland Heights, Mo. 63043
 Phone: 314-298-7500 Fax 314-298-8508 www.iecltg.com



PREPARED BY:
STOCK & ASSOCIATES
 Consulting Engineers, Inc.
 257 Chesterfield Business Parkway
 St. Louis, MO 63005 PH: (636) 530-9100 FAX (636) 530-9100
 e-mail: general@stockassoc.com
 Web: www.stockassoc.com

SITE DEVELOPMENT SECTION PLAN FOR:
THE PLACE - LOT 7 OF SPIRIT VALLEY BUSINESS PARK (2.911 AC.±)
 600 SPIRIT VALLEY EAST DRIVE
 CHESTERFIELD, MISSOURI

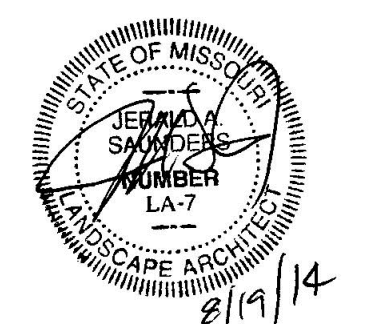
GEORGE M. STOCK
 CIVIL ENGINEER
 CERTIFICATE OF AUTHORITY
 NUMBER: 000996
 08/20/2014

REVISIONS:

1	City Comments	06/27/14
2	City Comments	08/20/14

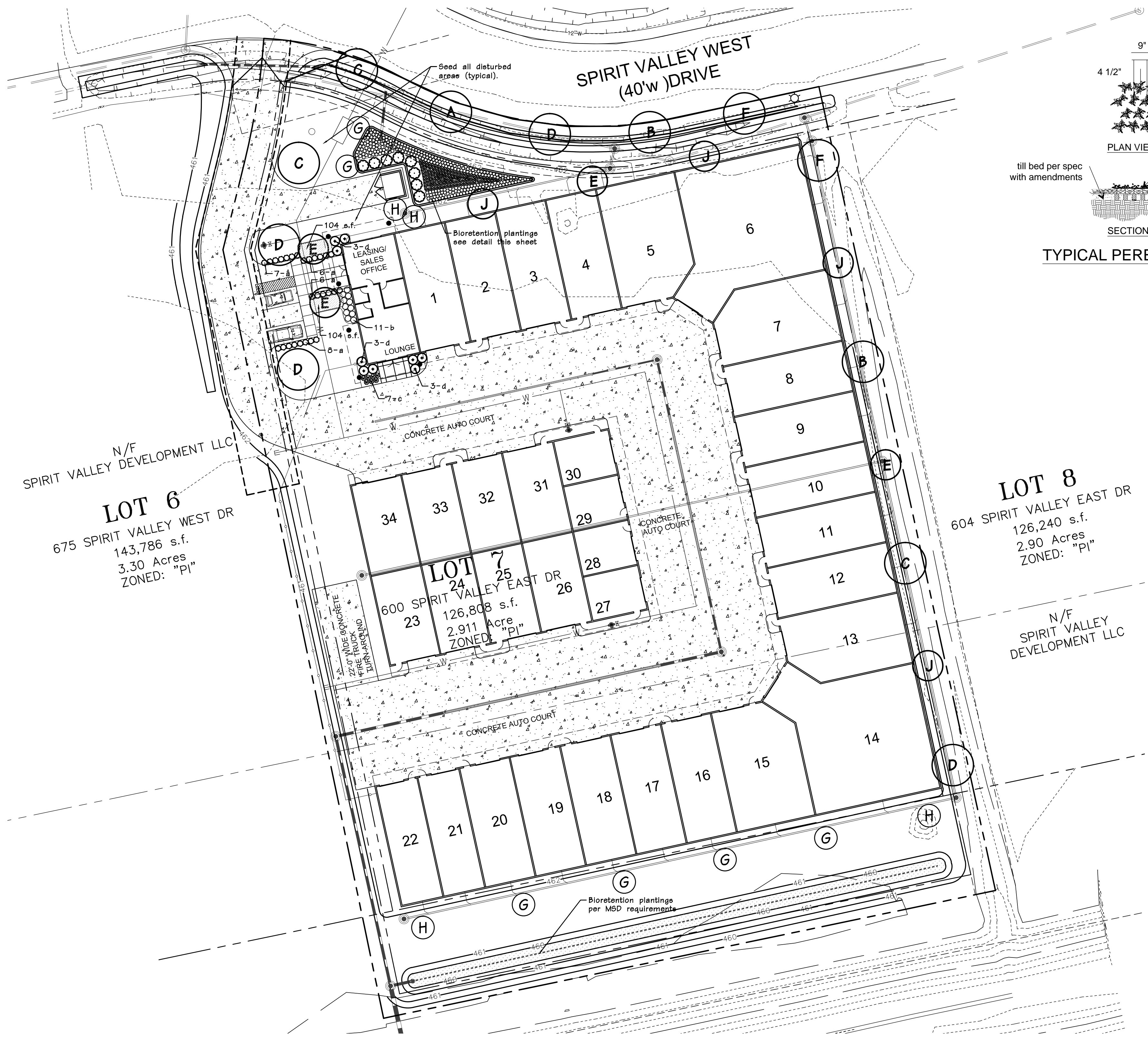
DRAWN BY: E.J.F.
 CHECKED BY: G.M.S.
 DATE: 06/06/2014
 JOB NO: 214-5282
 M.S.D. P #: BASE MAP #
 P-XXXX-XX XXX
 S.L.C. H&T # H&T S.L.P. #
 XXXX XX-XX-XX
 M.D.N.R. #
 MO-XXXXXX

SHEET TITLE:
PHOTOMETRIC PLAN
 SHEET NO.:
SDSP-3



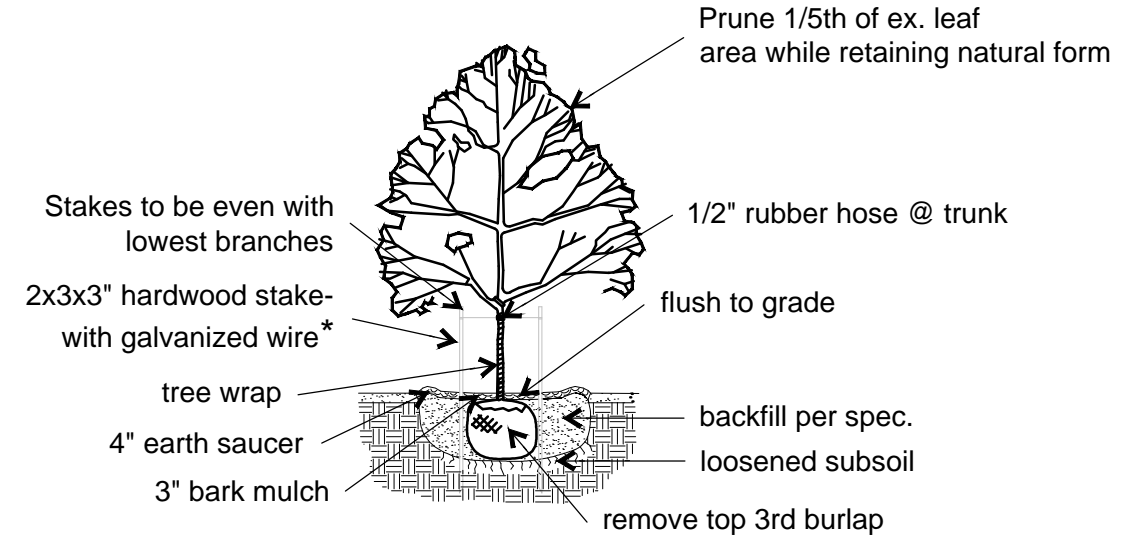
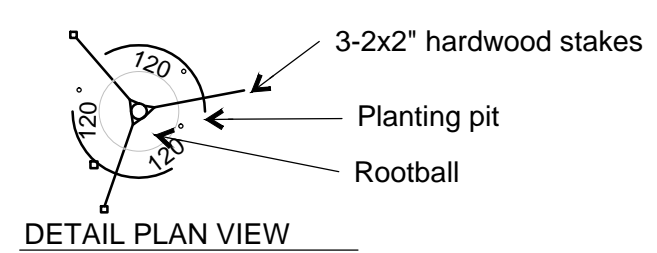
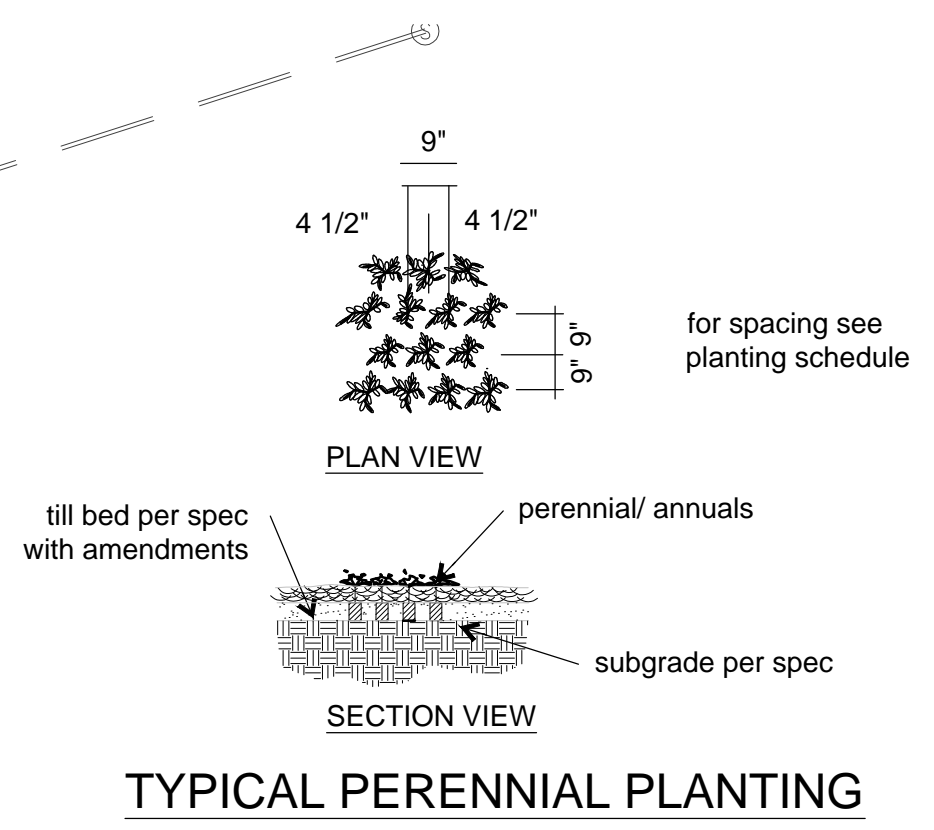
Jerald Saunders - Landscape Architect
MO License # LA-007

Consultants:

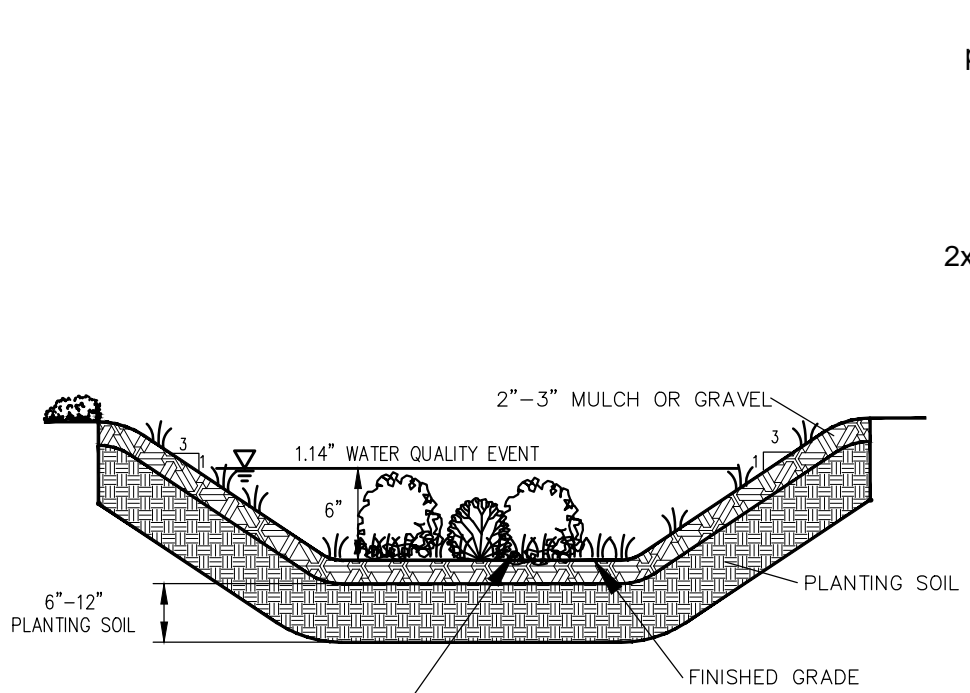


LANDSCAPE PLAN
SCALE 1" = 30'

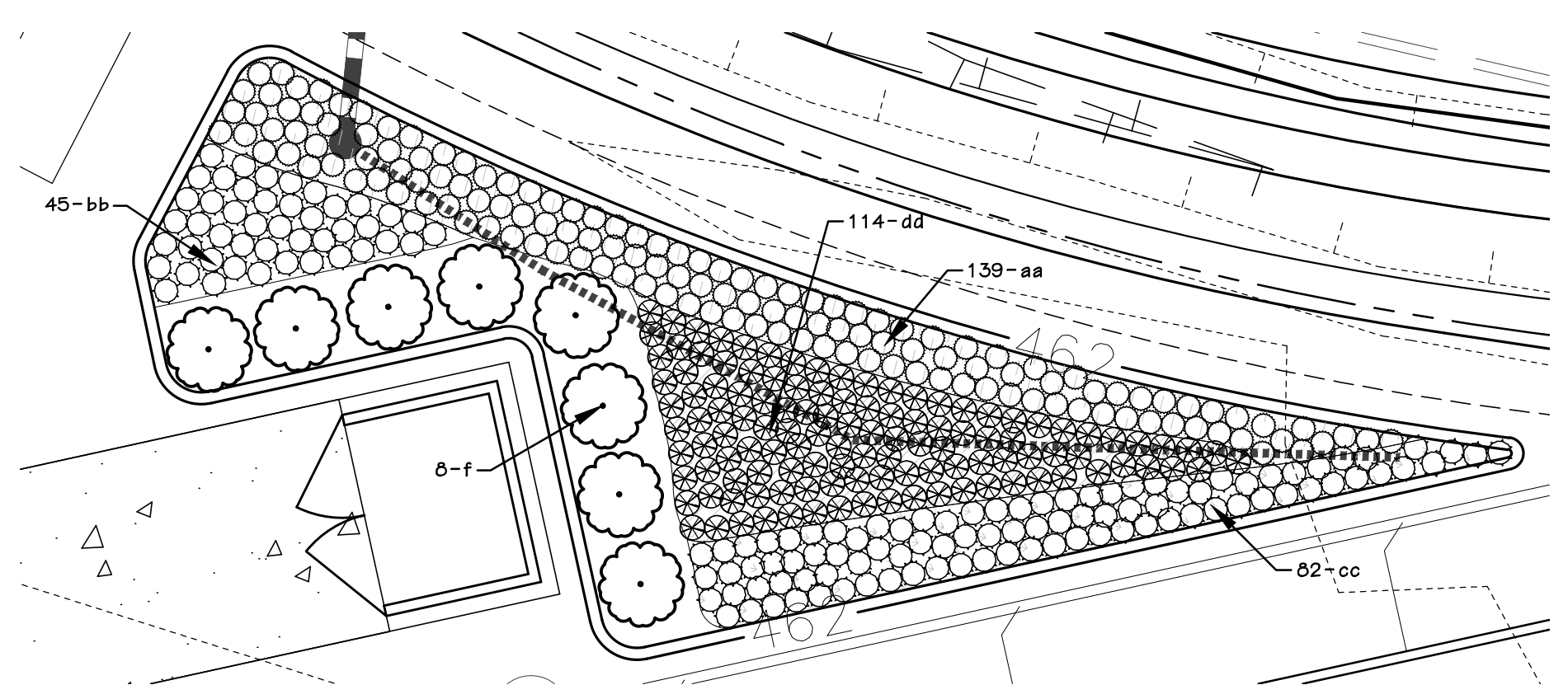
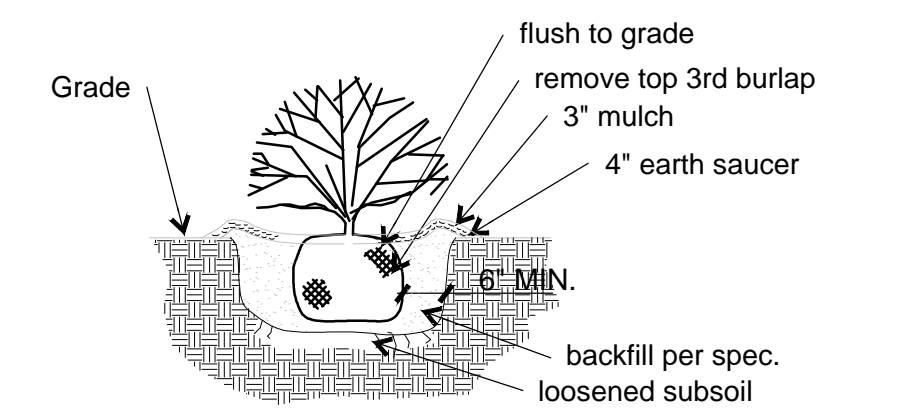
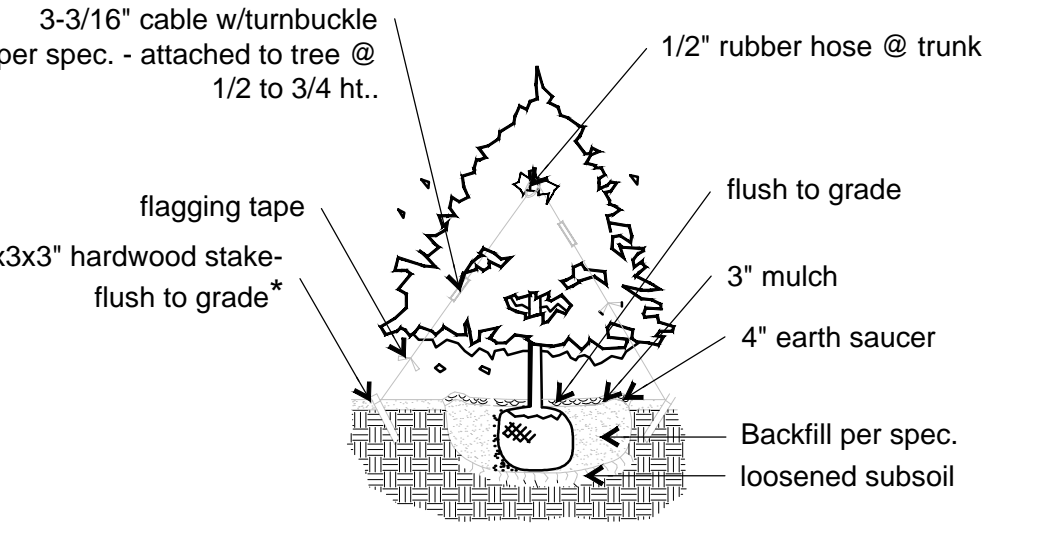
Open Space Percentage: 30.97%



- * Staking should only be done when:
 - Planting in soft, loose soils
 - Root balls in sandy soils, or wet clay
 - Trees located in an extremely windy location



PLANTS SELECTED FOR USE SHOULD TOLERATE BOTH SATURATED AND DRY CONDITIONS AND BE NATIVE OR ADAPTED TO MISSOURI.



BIORETENTION
SCALE 1" = 10'

PLANTING SCHEDULE							
SYMBOL	QUANTITY	BOTANICAL NAME	COMMON NAME	SIZE	TYPE	GROWTH RATE/SIZE CLASS	MATURE HT/FEET
TREES							
A	1	Acer rubrum 'Frankered'	Red Sunset Maple	2.5" cal	Deciduous	Fast/Large	45+
B	2	Quercus bicolor	Swamp White Oak	2.5" cal	Deciduous	Med/Large	45+
C	3	Tilia cordata	Littleleaf Linden	2.5" cal	Deciduous	Slow-Med/Large	45+
D	4	Zelkova serrata	Zelkova	2.5" cal	Deciduous	Fast/Large	45+
E	4	Cercis canadensis	Eastern Redbud	2.5" cal	Decid-Ornamental	Fast/Medium	25-30
F	2	Carpinus betulus 'Fastigiata'	Pyramidal European Hornbeam	2.5" cal	Deciduous	Slow/Medium	35-40
G	6	Pinus strobus	Eastern White Pine	6"	Evergreen	Fast/Large	45+
H	4	Picea glauca	White Spruce	6"	Evergreen	Med/Medium	30-40
J	4	Amelanchier arborea	Serviceberry	2.5" cal	Decid-Ornamental	Slow-Med/Medium	25-30
SHRUBS/PERENNIALS							
a	27	Buxus sinica var. insularis 'Wintergreen'	Wintergreen Boxwood	5 gal	Evergreen	-	-
b	11	Ilex 'China Girl'	China Girl Holly	5 gal	Evergreen	-	-
c	7	Buddleja Lo & Behold 'Blue Chip'	Blue Chip Dwarf Butterfly Bush	3 gal	Deciduous	-	-
d	9	Itea virginica 'Henry's Garnet'	Henry's Garnet Itea	5 gal	Deciduous	-	-
208 s.f.		Annuales, perenniales, groundcovers	-	1 qt	-	-	-

BIO-RETENTION SCHEDULE					
SYMBOL	QUANTITY	BOTANICAL NAME	COMMON NAME	SIZE	REMARKS
f	8	Cornus sericea 'Cardinal'	Red Twig Dogwood	36"	
aa	139	Aster novae angliae	New England Aster	2" x 2" x 5" DCP	18" o.c.
bb	45	Bouteloua curtipendula	Sideoats Grama	2" x 2" x 5" DCP	18" o.c.
cc	82	Sporobolus heterolepis	Prairie Dropseed	2" x 2" x 5" DCP	18" o.c.
dd	114	Carex praegracilis	Tollway Sedge	2" x 2" x 5" DCP	18" o.c.

Revisions:		
Date	Description	No.
6/26/14	City Comments	1
8/18/14	City Comments	2

Drawn: BR
Checked: RS

loomisAssociates
Landscape Architects/planners
707 Spirit Valley Drive, Suite 105
Chesterfield, Missouri 63005-1054
P: 636.861.1000
E: info@loomisassociates.com

Sheet Title: **Landscape Plan**
Sheet No: **L1**
Date: 06/06/14
Job #: 687.012



Job Name:
The Place Storage-REVISED

Catalog Number:
WD18D3/250PMH/VOLTAGE/
STANDARD COLOR
Notes:

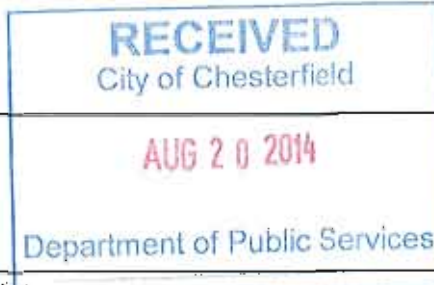
Type:

A

LEC-STL 14-41792



KIM LIGHTING



WD18
18" Wall Director®
revision 9/05/08 • wd18.pdf

Type:
Job:
Catalog number:

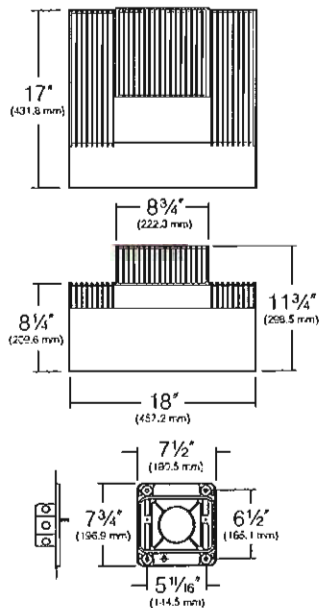
Approvals:

Fixture _____ Electrical Module _____ Finish _____ Options _____
See page 2 _____ See pages 3-4 _____

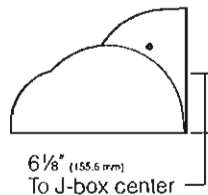
Date:
Page: 1 of 5

Specifications

Maximum Fixture
Weight (400HPS) = 43 lb



Mounting Plate must be securely attached to wall outside the J-box perimeter.



Reflector Housing: One-piece die-cast, low copper (<0.6% Cu) aluminum alloy with integral cooling fins. Rotates against ballast housing to provide 10° of adjustment with degree markers cast into the housing. At 0° adjustment, lens is totally concealed from view above horizontal with fixture aimed downward.

Ballast Housing: One-piece die-cast, low copper (<0.6% Cu) aluminum alloy with integral cooling fins. Fastens to mounting plate with keyhole slots freeing both hands for securing and wiring. One stainless steel socket-head screw on each side of housing frees the reflector housing to rotate for aiming. Tightening the screws locks the two housings together with sealing provided by a silicone gasket. For visual aiming, adjustment may be accomplished with the fixture on.

Lens Frame: One-piece die-cast, low copper (<0.6% Cu) aluminum alloy with integral hinges and stainless steel pins. Two stainless steel quarter-turn fasteners secure lens frame to reflector housing with sealing provided by a one-piece extruded and vulcanized silicone gasket. Lens is clear flat 3/16" thick tempered glass sealed to lens frame with a silicone gasket and retainer clips. For UP models, lens is mounted flush with frame for water run off, and is silicone sealed.

Type II, III, and IV Reflector Module: Specular Alzak® optical segments are rigidly mounted within a die-cast aluminum enclosure that attaches to the housing by a no-tool quick-disconnecting hinge and fastener. All sockets are mogul base with HPS and PMH rated 4KV with molded silicone lamp stabilizers. All modules are factory prewired with a quick-disconnect plug for mating to the ballast. Available in three light distributions, all interchangeable within the same housing.

Wall Grazer Reflector Module: Specular Alzak® optical segment is rigidly formed into a self-contained module which attaches to the housing by a no-tool quick-disconnecting hinge and fastener. Black louver vanes run parallel to the lamp arc for controlling the hot spot directly behind the fixture, and spill light into the atmosphere. All sockets are mogul base with HPS and PMH rated 4KV with molded silicone lamp stabilizers. All modules are factory prewired with a quick-disconnect plug for mating to the ballast.

Spot Reflector Module: Specular Alzak® optical spun parabola is rigidly mounted to a self-contained module which attaches to the housing by a no-tool quick-disconnecting hinge and fastener. Black internal louvers are provided to control the beam and prevent hot spots directly behind the fixture and spill light into the atmosphere. All sockets are mogul base with HPS and PMH rated 4KV with molded silicone lamp stabilizers. All modules are factory prewired with a quick-disconnect plug for mating to the ballast.

Electrical Components: High power factor ballasts are rigidly mounted inside the housing and are factory prewired with a quick-disconnect plug for mating to the socket. Starting temperatures are -40°F for HPS lamp modes and -20°F for PMH lamp modes.

Mounting Plate: The standard mounting plate is attached to wall (by others) outside the junction box perimeter. All mounting plates are die-cast aluminum with reinforced ribs. Two studs are provided in each plate with flange nuts to allow fixture mounting by keyhole slots. Sealant must be applied (by others) between mounting plate and mounting surface to insure a dry junction box.

Finish: Super TGIC thermoset polyester powder coat paint, 2.5 mil nominal thickness, applied over a titanated zirconium conversion coating; A.S.T.M. 2500 hour salt spray test endurance rating. Standard colors are Black, Dark Bronze, Light Gray, Stealth Gray®, Platinum Silver, or White. Custom colors are available.

CAUTION: Fixtures must be grounded in accordance with national, state and/or local electrical codes. Failure to do so may result in serious personal injury.

Listings and Ratings		
UL cUL 159B'	CE	25C Ambient
	IP66 Rated	

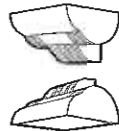
*Suitable for wet locations
KIM LIGHTING RESERVES THE RIGHT TO CHANGE SPECIFICATIONS WITHOUT NOTICE.



WD18
18" Wall Director®
revision 9/05/08 • wd18.pdf

Type:
Job:

Page: 2 of 5



Standard Features

Fixture

Cat. No. designates **WD18** fixture, Up (U) or Down (D) configuration, and light distribution (2, 3, 4, G or S).



WD Fixture



Type II



Type III



Type IV



Wall Grazer



Spot

Light Distribution:

Cat. No.: (Up 18")

WD18U2

WD18U3

WD18U4

WD18UG

WD18US

Cat. No.: (Down 18")

WD18D2

WD18D3

WD18D4

WD18DG

WD18DS

Finish

Super TGIC powder coat paint over a titanated zirconium conversion coating.

Color: Black Dark Bronze Light Gray Stealth Gray^a Platinum Silver White Custom Color^a

Cat. No.: BL

DB

LG

SG

PS

WH

CC

^aCustom colors subject to additional charges, minimum quantities and extended lead times.

Consult representative. Custom color description: _____



Job Name:
The Place Storage-REVISED

Catalog Number:
WD18D3/250PMH/VOLTAGE/
STANDARD COLOR
Notes:

Type:

A

LEC-STL14-41792

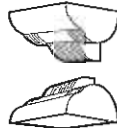


WD18
18" Wall Director®
revision 9/05/08 • wd18.pdf

Type:

Job:

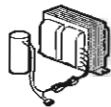
Page: 3 of 5



Standard Features

Electrical Module

PMH = Pulse Start Metal Halide
HPS = High Pressure Sodium
IF = Induction Fluorescent



Lamp Watts	Lamp Type	Line Volts
250	PMH	277

Lamp and electrical data supplied for reference purposes only. All initial lumen values shown may vary from one manufacturer to another. Consult lamp manufacturer's data for exact lumen and life data.

WARNING: Fixtures must be installed and grounded in accordance with national, state and/or local electrical codes. Failure to do so may result in serious personal injury. For lamp/ballast information outside of the U.S.A. and Canada, please consult your local Kim representative. Lamps by others.

NOTE: For lamp/ballast information outside of the U.S.A. and Canada, please consult your local Kim representative.

Cat. Nos. for Electrical Modules available:

SPECIFY VOLTAGE

Pulse Start Metal Halide

<input type="checkbox"/> 200PMH120	<input type="checkbox"/> 250PMH120	<input type="checkbox"/> 320PMH120
<input type="checkbox"/> 200PMH208	<input type="checkbox"/> 250PMH208	<input type="checkbox"/> 320PMH208
<input type="checkbox"/> 200PMH240	<input type="checkbox"/> 250PMH240	<input type="checkbox"/> 320PMH240
<input type="checkbox"/> 200PMH277	<input type="checkbox"/> 250PMH277	<input type="checkbox"/> 320PMH277
<input type="checkbox"/> 200PMH347	<input type="checkbox"/> 250PMH347	<input type="checkbox"/> 320PMH347
<input type="checkbox"/> 200PMH480	<input type="checkbox"/> 250PMH480	<input type="checkbox"/> 320PMH480

Lamp	T15 Clear	ED28 Clear	ED28 Clear
Socket	Mogul Base	Mogul Base	Mogul Base
ANSI Ballast	M136	M138	M154, M132

Pulse Start Metal Halide

<input type="checkbox"/> 350PMH120	<input type="checkbox"/> 400PMH120
<input type="checkbox"/> 350PMH208	<input type="checkbox"/> 400PMH208
<input type="checkbox"/> 350PMH240	<input type="checkbox"/> 400PMH240
<input type="checkbox"/> 350PMH277	<input type="checkbox"/> 400PMH277
<input type="checkbox"/> 350PMH347	<input type="checkbox"/> 400PMH347
<input type="checkbox"/> 350PMH480	<input type="checkbox"/> 400PMH480

Lamp	ED28 Clear	ED28 Clear
Socket	Mogul Base	Mogul Base
ANSI Ballast	M131	M135, M155

High Pressure Sodium

<input type="checkbox"/> 150HPS120	<input type="checkbox"/> 250HPS120	<input type="checkbox"/> 400HPS120
<input type="checkbox"/> 150HPS208	<input type="checkbox"/> 250HPS208	<input type="checkbox"/> 400HPS208
<input type="checkbox"/> 150HPS240	<input type="checkbox"/> 250HPS240	<input type="checkbox"/> 400HPS240
<input type="checkbox"/> 150HPS277	<input type="checkbox"/> 250HPS277	<input type="checkbox"/> 400HPS277
<input type="checkbox"/> 150HPS347	<input type="checkbox"/> 250HPS347	<input type="checkbox"/> 400HPS347
<input type="checkbox"/> 150HPS480 ¹	<input type="checkbox"/> 250HPS480	<input type="checkbox"/> 400HPS480

Induction Fluorescent

<input type="checkbox"/> 85IF120 ¹
<input type="checkbox"/> 85IF208 ¹
<input type="checkbox"/> 85IF240 ¹
<input type="checkbox"/> 85IF277 ¹

Lamp	E18 Clear,	ED18 Clear,	ED18 Clear	Induction
Socket	Mogul Base	Mogul Base	Mogul Base	
ANSI Ballast	S55	S50	S51	

¹ 85W IF lamps are available for WC18 only. Not recommended for all distribution types.

NOTE: Refer to WD14 spec sheet for compact fluorescent models.

CAUTION: All manufacturers of metal halide lamps recommend turning them off for 15 minutes once per week when under continuous operation. This will reduce the risk of arc tube rupture at end of life. Also, color temperature may differ between manufacturers of metal halide lamps. See lamp manufacturers' specification sheets.

NOTE: Due to the Energy Independence and Security Act (EISA) of 2007, Kim Lighting can no longer supply probe start metal halide ballasts with its luminaires, effective January 1, 2009. Contact Kim Lighting for availability of replacement ballasts for warranty service claims.

(http://www.aboutlightingcontrols.org/education/papers/2008_energy_law.shtml#metahalide).



Job Name:
The Place Storage-REVISED

Catalog Number:
WD18D3/250PMH/VOLTAGE/
STANDARD COLOR
Notes:

Type:

A

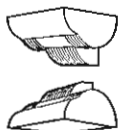
LEC-STL14-41792



WD18
18" Wall Director®
revision 9/05/08 • wd18.pdf

Type:
Job:

Page: 4 of 5



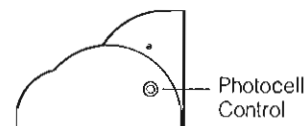
Optional Features

Photocell Control

Cat. No. (see right)
 No Option

Factory installed inside housing with fully gasketed sensor on side wall.

Cat. No.	Line Volts:	Cat. No.	Line Volts:
<input type="checkbox"/> A-30	120V	<input type="checkbox"/> A-33	277V
<input type="checkbox"/> A-31	208V	<input type="checkbox"/> A-34	480V
<input type="checkbox"/> A-32	240V	<input type="checkbox"/> A-35	347V



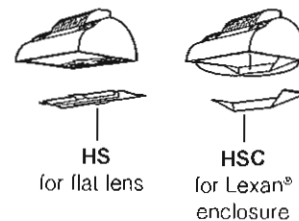
Houseside Shield

Cat. No. (see right)
 HS
 HSC
 No Option

Combination louver shield and black end-panel for reflector. Factory installed to reflector module. Reduces light toward wall by the amounts shown.

CAUTION: Do not use the Houseside Shield option with the Wall Grazer as it will interfere with the light distribution.

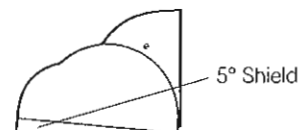
Approximate Light Reduction Toward Wall	Type II	Type III	Type IV
	-72%	-73%	-84%



5° Shield

Cat. No. 5DS18
 No Option

Aluminum shield field-attached to lens frame. Maintains a horizontal cutoff fixture edge when the luminaire is tilted 5°. Finished to match the fixture.

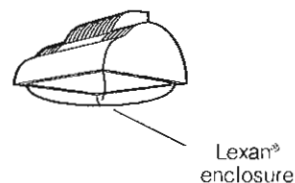


Lexan® Non-yellowing Enclosure:

Cat. No. LS
 No Option

For DOWN fixture models only. Clear convex vacuum formed non-yellowing Lexan® enclosure with gasket replaces standard tempered glass lens. 250W max. May be used with 400W HPS only in outdoor locations where ambient air temperature during fixture operation will not exceed 85°F.

NOTE: Use only when vandalism is anticipated to be high. Useful life is limited by UV discoloration from sunlight and MH lamps. A program of regular inspection and periodic replacement is highly recommended to maintain optimum fixture performance.

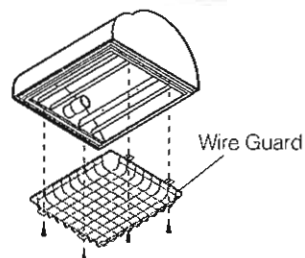


Wire Guard

Cat. No. WG18
 No Option

11 ga. (.12" dia.) BB Wire, (.75" sq. welded mesh pattern.) 15" x 14½" x 1½" deep. Finish is super TGIC thermoset polyester powder coat paint, over zinc plated wireform. Finished to match the fixture.

NOTE: Only available with flat lens applications.





Job Name:
The Place Storage-REVISED

Catalog Number:
WD18D3/250PMH/VOLTAGE/
STANDARD COLOR
Notes:

Type:

A

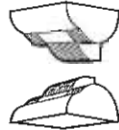
LEC-STL14-41792



WD18
18" Wall Director®
revision 9/05/08 • wd18.pdf

Type:
Job:

Page: 5 of 5



Optional Features

Fusing

Cat. No. (see right)
 No Option

Line Volts: 120V 208V 240V 277V 347V 480V
Cat. No.: SF DF DF SF SF DF



Quartz Standby

Cat. No. QS
 No Option

Integral electronic device energizes a T-4 mini-can socket during initial lamp start-up or after a power interruption. De-energizes prior to H.I.D. lamp reaching full brightness. T-4 halogen lamp by others; 150 watt maximum.



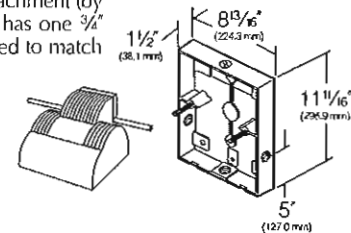
Surface Conduit Mount

Cat. No. SCM18
 No Option

Cast aluminum junction box and fixture mount for attachment (by others) to existing walls, beams or columns. **SCM18** has one 3/4" NPT conduit tap in each side, top and bottom. Finished to match the fixture.

SCM18 for all fixtures, UP and DOWN.

Note: Must be securely mounted to all surface.



**Job Name:**
The Place Storage-REVISED**Catalog Number:**
WD18D4/250PMH/VOLTAGE/
STANDARD COLOR
Notes:**Type:****B**

LEC-STL14-41792

**KIM LIGHTING**RECEIVED
City of Chesterfield

AUG 20 2014

Department of Public Services

WD18

18" Wall Director®

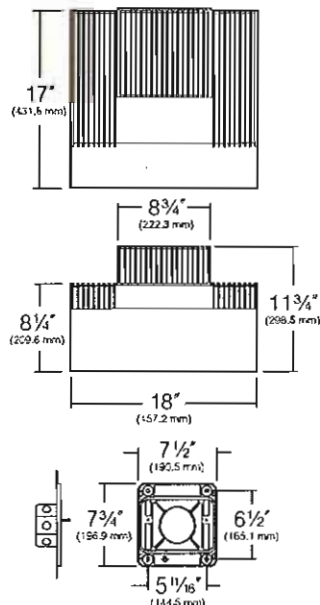
revision 9/05/08 • wd18.pdf

Type:**Job:****Catalog number:****Approvals:**

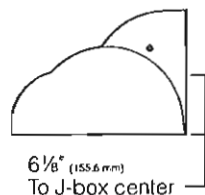
Fixture	Electrical Module	Finish	Options
	See page 2		See pages 3-4

Date:**Page: 1 of 5**

Specifications

Maximum Fixture
Weight (400HPS) = 43 lb

Mounting Plate must be securely attached to wall outside the J-box perimeter.



HUBBELL LIGHTING INC.



Reflector Housing: One-piece die-cast, low copper (<0.6% Cu) aluminum alloy with integral cooling fins. Rotates against ballast housing to provide 10° of adjustment with degree markers cast into the housing. At 0° adjustment, lens is totally concealed from view above horizontal with fixture aimed downward.

Ballast Housing: One-piece die-cast, low copper (<0.6% Cu) aluminum alloy with integral cooling fins. Fastens to mounting plate with keyhole slots freeing both hands for securing and wiring. One stainless steel socket-head screw on each side of housing frees the reflector housing to rotate for aiming. Tightening the screws locks the two housings together with sealing provided by a silicone gasket. For visual aiming, adjustment may be accomplished with the fixture on.

Lens Frame: One-piece die-cast, low copper (<0.6% Cu) aluminum alloy with integral hinges and stainless steel pins. Two stainless steel quarter-turn fasteners secure lens frame to reflector housing with sealing provided by a one-piece extruded and vulcanized silicone gasket. Lens is clear flat 3/16" thick tempered glass sealed to lens frame with a silicone gasket and retainer clips. For UP models, lens is mounted flush with frame for water run off, and is silicone sealed.

Type II, III, and IV Reflector Module: Specular Alzak® optical segments are rigidly mounted within a die-cast aluminum enclosure that attaches to the housing by a no-tool quick-disconnecting hinge and fastener. All sockets are mogul base with HPS and PMH rated 4KV with molded silicone lamp stabilizers. All modules are factory prewired with a quick-disconnect plug for mating to the ballast.

Wall Grazer Reflector Module: Specular Alzak® optical segment is rigidly formed into a self-contained module which attaches to the housing by a no-tool quick-disconnecting hinge and fastener. Black louver vanes run parallel to the lamp arc for controlling the hot spot directly behind the fixture, and spill light into the atmosphere. All sockets are mogul base with HPS and PMH rated 4KV with molded silicone lamp stabilizers. All modules are factory prewired with a quick-disconnect plug for mating to the ballast.

Spot Reflector Module: Specular Alzak® optical spun parabola is rigidly mounted to a self-contained module which attaches to the housing by a no-tool quick-disconnecting hinge and fastener. Black internal louvers are provided to control the beam and prevent hot spots directly behind the fixture and spill light into the atmosphere. All sockets are mogul base with HPS and PMH rated 4KV with molded silicone lamp stabilizers. All modules are factory prewired with a quick-disconnect plug for mating to the ballast.

Electrical Components: High power factor ballasts are rigidly mounted inside the housing and are factory prewired with a quick-disconnect plug for mating to the socket. Starting temperatures are -40°F for HPS lamp modes and -20°F for PMH lamp modes.

Mounting Plate: The standard mounting plate is attached to wall (by others) outside the junction box perimeter. All mounting plates are die-cast aluminum with reinforced ribs. Two studs are provided in each plate with flange nuts to allow fixture mounting by keyhole slots. Sealant must be applied (by others) between mounting plate and mounting surface to insure a dry junction box.

Finish: Super TGIC thermoset polyester powder coat paint, 2.5 mil nominal thickness, applied over a titanated zirconium conversion coating; A.S.T.M. 2500 hour salt spray test endurance rating. Standard colors are Black, Dark Bronze, Light Gray, Stealth Gray®, Platinum Silver, or White. Custom colors are available.

CAUTION: Fixtures must be grounded in accordance with national, state and/or local electrical codes. Failure to do so may result in serious personal injury.

Listings and Ratings

UL cUL 1598 ¹	CE	25C Ambient
	IP66 Rated	

¹Suitable for wet locations

KIM LIGHTING RESERVES THE RIGHT TO CHANGE SPECIFICATIONS WITHOUT NOTICE.

Submitted by Luikart-Eason-Calcaterra & Co.



Job Name:
The Place Storage-REVISED

Catalog Number:
WD18D4/250PMH/VOLTAGE/
STANDARD COLOR
Notes:

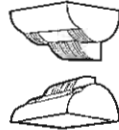
Type:
B
LEC-STL14.41792



WD18
18" Wall Director®
revision 9/05/08 • wd18.pdf

Type:
Job:

Page: 2 of 5



Standard Features

Fixture

Cat. No. designates **WD18** fixture, Up (U) or Down (D) configuration, and light distribution (2, 3, 4, G or S).



WD Fixture

Light Distribution:



Type II



Type III



Type IV



Wall Grazer



Spot

Cat. No.: (Up 18")

WD18U2

WD18U3

WD18U4

WD18UG

WD18US

Cat. No.: (Down 18")

WD18D2

WD18D3

WD18D4

WD18DG

WD18DS

Finish

Super TGIC powder coat paint over a titanated zirconium conversion coating.

Color: Black Dark Bronze Light Gray Stealth Gray[®] Platinum Silver White Custom Color[†]

Cat. No.: **BL** **DB** **LG** **SG** **PS** **WH** **CC**

[†]Custom colors subject to additional charges, minimum quantities and extended lead times. Consult representative. Custom color description: _____



Job Name:
The Place Storage-REVISED

Catalog Number:
WD18D4/250PMH/VOLTAGE/
STANDARD COLOR
Notes:

Type:

B

LEC-STL14-41792

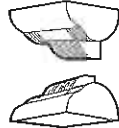


WD18
18" Wall Director®
revision 9/05/08 • wd18.pdf

Type:

Job:

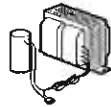
Page: 3 of 5



Standard Features

Electrical Module

PMH = Pulse Start Metal Halide
HPS = High Pressure Sodium
IF = Induction Fluorescent



Lamp Watts Lamp Line
Type Volts
250 PMH 277

Lamp and electrical data supplied for reference purposes only. All initial lumen values shown may vary from one manufacturer to another. Consult lamp manufacturer's data for exact lumen and life data.

WARNING: Fixtures must be installed and grounded in accordance with national, state and/or local electrical codes. Failure to do so may result in serious personal injury. For lamp/ballast information outside of the U.S.A. and Canada, please consult your local Kim representative. Lamps by others.

NOTE: For lamp/ballast information outside of the U.S.A. and Canada, please consult your local Kim representative.

Cat. Nos. for Electrical Modules available:

SPECIFY VOLTAGE

Pulse Start Metal Halide

<input type="checkbox"/> 200PMH120	<input type="checkbox"/> 250PMH120	<input type="checkbox"/> 320PMH120
<input type="checkbox"/> 200PMH208	<input type="checkbox"/> 250PMH208	<input type="checkbox"/> 320PMH208
<input type="checkbox"/> 200PMH240	<input type="checkbox"/> 250PMH240	<input type="checkbox"/> 320PMH240
<input type="checkbox"/> 200PMH277	<input type="checkbox"/> 250PMH277	<input type="checkbox"/> 320PMH277
<input type="checkbox"/> 200PMH347	<input type="checkbox"/> 250PMH347	<input type="checkbox"/> 320PMH347
<input type="checkbox"/> 200PMH480	<input type="checkbox"/> 250PMH480	<input type="checkbox"/> 320PMH480

Lamp	T15 Clear	ED28 Clear	ED28 Clear
Socket	Mogul Base	Mogul Base	Mogul Base
ANSI Ballast	M136	M138	M154, M132

Pulse Start Metal Halide

<input type="checkbox"/> 350PMH120	<input type="checkbox"/> 400PMH120
<input type="checkbox"/> 350PMH208	<input type="checkbox"/> 400PMH208
<input type="checkbox"/> 350PMH240	<input type="checkbox"/> 400PMH240
<input type="checkbox"/> 350PMH277	<input type="checkbox"/> 400PMH277
<input type="checkbox"/> 350PMH347	<input type="checkbox"/> 400PMH347
<input type="checkbox"/> 350PMH480	<input type="checkbox"/> 400PMH480

Lamp	ED28 Clear	ED28 Clear
Socket	Mogul Base	Mogul Base
ANSI Ballast	M131	M135, M155

High Pressure Sodium

<input type="checkbox"/> 150HPS120	<input type="checkbox"/> 250HPS120	<input type="checkbox"/> 400HPS120
<input type="checkbox"/> 150HPS208	<input type="checkbox"/> 250HPS208	<input type="checkbox"/> 400HPS208
<input type="checkbox"/> 150HPS240	<input type="checkbox"/> 250HPS240	<input type="checkbox"/> 400HPS240
<input type="checkbox"/> 150HPS277	<input type="checkbox"/> 250HPS277	<input type="checkbox"/> 400HPS277
<input type="checkbox"/> 150HPS347	<input type="checkbox"/> 250HPS347	<input type="checkbox"/> 400HPS347
<input type="checkbox"/> 150HPS480*	<input type="checkbox"/> 250HPS480	<input type="checkbox"/> 400HPS480

Lamp	E18 Clear,	ED18 Clear,	ED18 Clear	Induction
Socket	Mogul Base	Mogul Base	Mogul Base	
ANSI Ballast	S55	S50	S51	

Induction Fluorescent
 85IF120'
 85IF208'
 85IF240'
 85IF277'

* 85W IF lamps are available for WC18 only. Not recommended for all distribution types.

NOTE: Refer to WD14 spec sheet for compact fluorescent models.

CAUTION: All manufacturers of metal halide lamps recommend turning them off for 15 minutes once per week when under continuous operation. This will reduce the risk of arc tube rupture at end of life. Also, color temperature may differ between manufacturers of metal halide lamps. See lamp manufacturers' specification sheets.

NOTE: Due to the Energy Independence and Security Act (EISA) of 2007, Kim Lighting can no longer supply probe start metal halide ballasts with its luminaires, effective January 1, 2009. Contact Kim Lighting for availability of replacement ballasts for warranty service claims.

(http://www.ahoutlightingcontrols.org/education/papers/2008_energy_law.shtml#metahalide).



Job Name:
The Place Storage-REVISED

Catalog Number:
WD18D4/250PMH/VOLTAGE/
STANDARD COLOR
Notes:

Type:

B

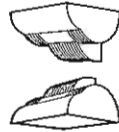
LEC-STL14.41792



WD18
18" Wall Director®
revision 9/05/08 • wd18.pdf

Type:
Job:

Page: 4 of 5



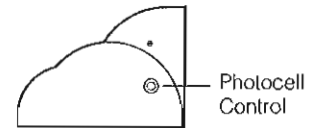
Optional Features

Photocell Control

Cat. No. (see right)
 No Option

Factory installed inside housing with fully gasketed sensor on side wall.

Cat. No.	Line Volts:	Cat. No.	Line Volts:
<input type="checkbox"/> A-30	120V	<input type="checkbox"/> A-33	277V
<input type="checkbox"/> A-31	208V	<input type="checkbox"/> A-34	480V
<input type="checkbox"/> A-32	240V	<input type="checkbox"/> A-35	347V



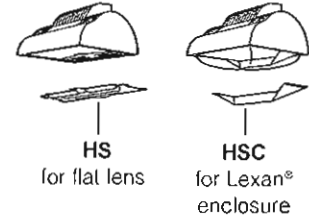
Houseside Shield

Cat. No. (see right)
 HS
 HSC
 No Option

Combination louver shield and black end-panel for reflector. Factory installed to reflector module. Reduces light toward wall by the amounts shown.

CAUTION: Do not use the Houseside Shield option with the Wall Grazer as it will interfere with the light distribution.

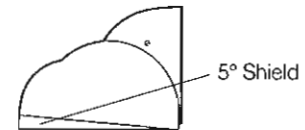
Approximate Light Reduction Toward Wall	Type II	Type III	Type IV
	-72%	-73%	-84%



5° Shield

Cat. No. 5DS18
 No Option

Aluminum shield field-attached to lens frame. Maintains a horizontal cutoff fixture edge when the luminaire is tilted 5°. Finished to match the fixture.

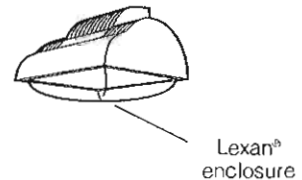


Lexan® Non-yellowing Enclosure:

Cat. No. LS
 No Option

For DOWN fixture models only. Clear convex vacuum formed non-yellowing Lexan® enclosure with gasket replaces standard tempered glass lens. 250W max. May be used with 400W HPS only in outdoor locations where ambient air temperature during fixture operation will not exceed 85°F.

NOTE: Use only when vandalism is anticipated to be high. Useful life is limited by UV discoloration from sunlight and MH lamps. A program of regular inspection and periodic replacement is highly recommended to maintain optimum fixture performance.

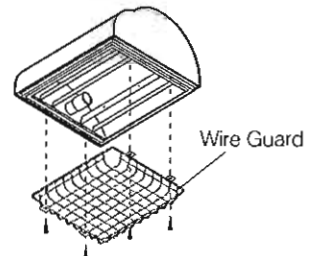


Wire Guard

Cat. No. WG18
 No Option

11 ga. (.12" dia.) BB Wire, (.75" sq. welded mesh pattern.) 15" x 14½" x 1½" deep. Finish is super TGIC thermoset polyester powder coat paint, over zinc plated wireform. Finished to match the fixture.

NOTE: Only available with flat lens applications.





Job Name:
The Place Storage-REVISED

Catalog Number:
WD18D4/250PMH/VOLTAGE/
STANDARD COLOR
Notes:

Type:

B

LEC-STL14-41792



WD18
18" Wall Director®
revision 9/05/08 • wd18.pdf

Type:
Job:

Page: 5 of 5

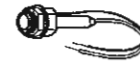


Optional Features

Fusing

Cat. No. (see right)
 No Option

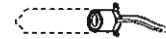
Line Volts: 120V 208V 240V 277V 347V 480V
Cat. No.: SF DF DF SF SF DF



Quartz Standby

Cat. No. QS
 No Option

Integral electronic device energizes a T-4 mini-can socket during initial lamp start-up or after a power interruption. De-energizes prior to H.I.D. lamp reaching full brightness. T-4 halogen lamp by others; 150 watt maximum.



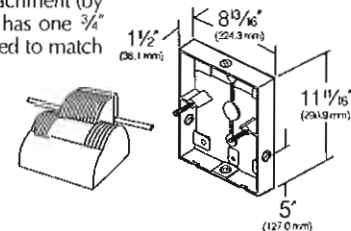
Surface Conduit Mount

Cat. No. SCM18
 No Option

Cast aluminum junction box and fixture mount for attachment (by others) to existing walls, beams or columns. **SCM18** has one 3/4" NPT conduit tap in each side, top and bottom. Finished to match the fixture.

SCM18 for all fixtures, UP and DOWN.

Note: Must be securely mounted to all surface.



Submitted by Luikart-Eason-Calcaterra & Co.



Job Name:
The Place Storage-REVISED

Catalog Number:
BNM-36LED-3K-VOLTAGE/1W/
STANDARD COLOR

Type:

C

Notes:

LEC-STL14-41792



RECEIVED
City of Chesterfield

AUG 20 2014

BNM

Mini-Bounce™

revision 03/20/14 • kl_bnm_spec.pdf

Department of Public Services

Type:
Job:
Catalog number:

Approvals:

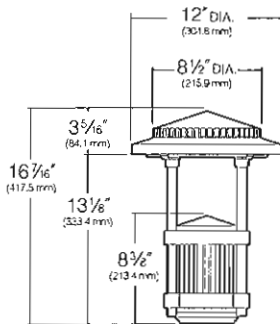
/ BNM /
Mfg. Fixture Electrical Module Finish Options
See page 2 See page 3 See pages 4 - 5

Date:
Page: 1 of 5

Select pole from Kim Pole Catalog (PRA or KRS). Omit for 1W Wall Mount.

Specifications

35 to 150 watt HID
42 watt Compact Fluorescent
18, 27 or 36 LED



Hood and Lens Frame: Die-cast, low copper (<0.6% Cu) aluminum alloy with stainless steel hinge. Hood is opened by loosening three stainless steel captive button-head socket cap screws. 3/16" thick clear flat tempered glass lens seals against the lens frame by a one-piece molded silicone gasket. Lens frame seals against the hood by a one-piece extruded and vulcanized silicone gasket.

Reflector Module: Specular Alzak² optical segments are rigidly mounted within an aluminum frame and fastened securely to the hood. A porcelain medium base socket rated 4KV is provided for HID, and a GX24q-3 universal socket is provided for fluorescent. No reflector provided for LED.

Body Support: Die-cast, low copper (<0.6% Cu) aluminum alloy flanges compress a ribbed extruded aluminum chamber. The four heavy wall extruded aluminum support rods are mechanically fastened to the lens frame with stainless steel fasteners. The support rods are held in position through die-cast arms and mechanically fastened at the bottom with a custom aluminum bolt. The electrical wiring is channeled through a support rod with a brass bushing. The die-cast aluminum cover is held with two captive stainless steel screws.

StarView™ Black Ballast Cover: Die-cast, low copper (<0.6% Cu) aluminum alloy, retained by two captive stainless steel screws. Matte black finish to eliminate bounce light. See page 5.

Electrical Module: Factory mounted to a rigid harness attached inside the body support. Access is by removal of the die-cast aluminum cover.

HID: High Power Factor with starting temperatures of -20°F for PMH and -40°F for HPS lamp modes. **Fluorescent:** High Power Factor with starting temperature of 0°F.

LED Optical System: A total of 9 LED emitters configured in a rectangular array comprised together as a module. Two (2) modules for 18 LED version; three (3) modules for 27 LED version; and four (4) modules for 36 LED version. Available in 4000K and 5000K.

LED Driver: Rated for 18 or 36 LED. Universal voltage from 120 to 277V with a ±10% tolerance. -40°F starting temperature. All drivers are Underwriters Laboratories recognized.

Finish/Color: Finish is super TGIC thermoset polyester powder coat paint, 2.5 mil nominal thickness, applied over a titanated zirconium conversion coating; 2500 hour salt spray test endurance rating. Standard colors are Black, Dark Bronze, Light Gray, Stealth Gray™, Platinum Silver, or White. Custom colors are available.

CAUTION: Fixtures must be grounded in accordance with national, state and/or local electrical codes. Failure to do so may result in serious personal injury.

Listings and Ratings

ETL ¹ to UL Standards 1598 & 8750	IP66 Rated	CE	25C Ambient
Full Cut Off ²			
IDA Rated - FS - Full Shielded			

¹Suitable for wet locations

²Dark Sky Legislation Compliant

KIM LIGHTING RESERVES THE RIGHT TO CHANGE SPECIFICATIONS WITHOUT NOTICE



U.S. Patent 0473,333S


BNM

Mini-Bounce™

revision 03/20/14 • kl_bnm_spec.pdf

Type:
Job:

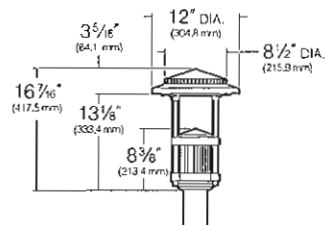
Page: 2 of 5



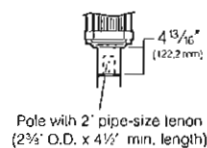
Standard Mountings

Specifications

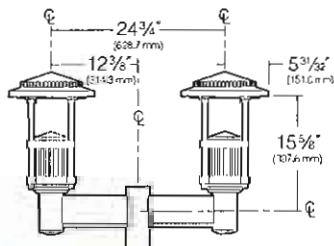
Flush Mount (FM)



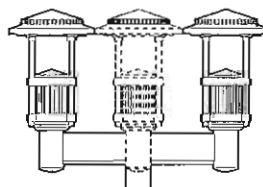
Post Tenon Top (PT)



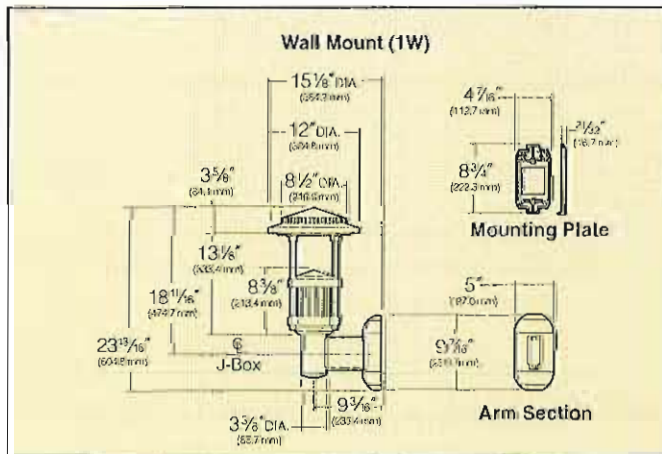
Twin Arm Mount (2B)



Quad Arm Mount (4C)



Wall Mount (1W)



Mount by one of the following:

Flush Mount (FM): Flush Mount to any 4 round pole with a wall thickness not more than .188 thick. A spreader assembly is provided to grip the inside surface of the pole. A single spreader bolt is accessible through the body support. (Other pole sizes, consult factory).

Pole Tenon Mount (PT): Pole Tenon Mount to any 2 pipe tenon (2 3/8" OD). A cast tenon adaptor is provided to slip-fit the tenon. (Other tenon sizes, consult factory).

Twin Arm Mount (2B): Side pole arm assemblies are provided to mount directly to the side of any pole surface. Specify square or round pole size when ordering. An extruded aluminum riser and arm is provided with extension rods and cast end caps. A steel backing plate is provided to reinforce the interior of the pole.

Quad Arm Mount (4C): Side pole arm assemblies are provided to mount directly to the side of any pole surface. Specify square or round pole size when ordering. An extruded aluminum riser and arm is provided with extension rods and cast end caps. A steel backing plate is provided to reinforce the interior of the pole.

Wall Mounting (1W): Wall mount arm is provided to attach to a flat surface. A cast mounting plate of aluminum, mounted to the wall with bolts (by others). Fixture and arm are then mounted to a cast aluminum cover plate before attaching to the wall mounting plate. The fixture-arm-cover plate assembly is hooked to the wall mounting plate, and secured with stainless steel screws provided. After mounting to the wall, field splices are made at the opening in the cover plate, then covered by a cast aluminum plate that blends with the cover plate design. Complete fixture-arm-cover plate assembly can therefore be mounted before field splices are made. Cover plate is finished to match arm and fixture powder coat color.

Caution: Structural integrity of mounting plate attachment to wall is by others.



Job Name:
The Place Storage-REVISED

Catalog Number:
BNM-36LED-3K-VOLTAGE/1W/
STANDARD COLOR

Notes:

Type:

C

LEC-STL14-41792



BNM
Mini-Bounce™
revision 03/20/14 • kl_bnm_spec.pdf

Type:

Job:

Page: 3 of 5



Standard Features

Mounting:

Plan View:



EPA: 1.0
Cat. No.: FM

1.0
 PT

3.0
 2B

4.5
 4C

n/a
 1W

Flush Mount

Tenon Mount

Twin Mount

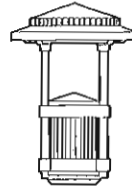
Quad Mount

Wall Mount

Fixture:

Cat. No. designates BNM fixture and light distribution.

**Horizontal Lamp
Flat Glass Lens**



Light Distribution:

Type V
Round

Cat. No.:

BNM



Job Name:
The Place Storage-REVISED

Catalog Number:
BNM-36LED-3K-VOLTAGE/1W/
STANDARD COLOR
Notes:

Type:
C
LEC-STL14-41792



BNM
Mini-Bounce™
revision 03/20/14 • kl_bnm_spec.pdf

Type:
Job:

Page: 4 of 5



Standard Features

Electrical Module
PMH = Pulse Start Metal Halide
HPS = High Pressure Sodium
PL = Compact Fluorescent
LED = Light Emitting Diode

Lamp Lamp Line
 Watts Type Volts
100 HPS 277
 For PMH, HPS and PL.
 See footnote 3 below for LED

Cat. Nos. for Electrical Modules available:

Pulse Start Metal Halide					
<input type="checkbox"/> 35PMH120	<input type="checkbox"/> 70PMH120	<input type="checkbox"/> 100PMH120	<input type="checkbox"/> 150PMH120		
<input type="checkbox"/> 35PMH208	<input type="checkbox"/> 70PMH208	<input type="checkbox"/> 100PMH208	<input type="checkbox"/> 150PMH208		
<input type="checkbox"/> 35PMH240	<input type="checkbox"/> 70PMH240	<input type="checkbox"/> 100PMH240	<input type="checkbox"/> 150PMH240		
<input type="checkbox"/> 35PMH277	<input type="checkbox"/> 70PMH277	<input type="checkbox"/> 100PMH277	<input type="checkbox"/> 150PMH277		
<input type="checkbox"/> 35PMH347	<input type="checkbox"/> 70PMH347	<input type="checkbox"/> 100PMH347	<input type="checkbox"/> 150PMH347		
Lamp	T-6, Clear	ED-17 Coated	T-6 Clear	ED-17, Coated	ED-17 Coated T-6 Clear
Socket	G12 Base	Medium	G12 Base	Medium Base	Medium G12 Base
ANSI Ballast	M-130	M-98		M-140 / M-90	M-102
High Pressure Sodium			Compact Fluorescent		
<input type="checkbox"/> 70HPS120	<input type="checkbox"/> 100HPS120	<input type="checkbox"/> 150HPS120	<input type="checkbox"/> 42PL120 ^{1,2}		
<input type="checkbox"/> 70HPS208	<input type="checkbox"/> 100HPS208	<input type="checkbox"/> 150HPS208	<input type="checkbox"/> 42PL208 ^{1,2}		
<input type="checkbox"/> 70HPS240	<input type="checkbox"/> 100HPS240	<input type="checkbox"/> 150HPS240	<input type="checkbox"/> 42PL240 ^{1,2}		
<input type="checkbox"/> 70HPS277	<input type="checkbox"/> 100HPS277	<input type="checkbox"/> 150HPS277	<input type="checkbox"/> 42PL277 ^{1,2}		
<input type="checkbox"/> 70HPS347	<input type="checkbox"/> 100HPS347	<input type="checkbox"/> 150HPS347			
Lamp	ED-17, Coated	ED-17, Coated	ED-17, Coated	Coated	
Socket	Medium Base	Medium Base	Medium Base	GX24q-3 Base	
ANSI Ballast	S-62	S-54	S-55		
LED					
<input type="checkbox"/> 18L3KUV ³	<input type="checkbox"/> 27L3KUV ³	<input type="checkbox"/> 36L3KUV ³			
<input type="checkbox"/> 18L5KUV ³	<input type="checkbox"/> 27L5KUV ³	<input type="checkbox"/> 36L5KUV ³			
Lamp	LED	LED	LED		
Socket	N/A	N/A	N/A		

¹ Operates one 42W triple tube compact fluorescent lamp at 120 through 277 volts (50-60 Hz).

² Remote battery pack and test switch available for 42W compact fluorescent lamps - consult factory.

NOTE: Lamp and electrical data supplied for reference purposes only. All initial lumen values shown may vary from one manufacturer to another. Consult lamp manufacturer's data for exact lumen and life data.

To reduce shadowing from the luminaire support arms, coated lamps are recommended.

WARNING: Fixtures must be installed and grounded in accordance with national, state and/or local electrical codes. Failure to do so may result in serious personal injury. For lamp/ballast information outside of the U.S.A. and Canada, please consult our local Kim representative. Lamps by others.

³ For LED, 18L = 18 LED Emitters; 36L = 36 LED Emitters; 4K = 4000K color temperature; 5K = 5000K color temperature; UV = Universal Voltage from 120 to 277V with a ± 10% tolerance.

SPECIFY COLOR

Finish

Super TGIC powder coat paint over a titanated zirconium conversion coating.

Color: Black Dark Bronze Light Gray Stealth Gray™ Platinum Silver White Custom Color⁴

Cat. No.: BL DB LG SG PS WH CC

⁴Custom colors subject to additional charges, minimum quantities and extended lead times. Consult representative. Custom color description: _____



Job Name:
The Place Storage-REVISED

Catalog Number:
BNM-36LED-3K-VOLTAGE/1W/
STANDARD COLOR

Notes:

Type:

C

LEC-STL14-41792

**BNM**

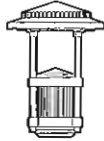
Mini-Bounce™

revision 03/20/14 • kl_bnm_spec.pdf

Type:

Job:

Page: 5 of 5

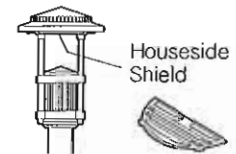


Optional Features

Houseside Shield

Cat. No. HS
 No Option

Optional shield made of stamped louvered aluminum allows streetside light to pass while blocking houseside light. Blackened reflector panels within the reflector also reduces the houseside reflection.



Textured Glass Lens

Cat. No. TG
 No Option

Unique textured glass reduces LED glare and improves visual comfort.

Fusing

Cat. No. (see right)
 No Option

High temperature fuse holders factory installed inside the fixture housing. Fuse is included.

Line Volts: 120V 208V 240V 277V 347V

Cat. No.: SF DF DF SF SF

Base Socket

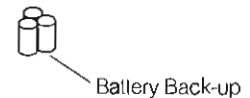
Cat. No. G12
 No Option

Available for 35W, 70W and 150W metal halide T-6 bi-pin lamps. Must use UV filtering lamp.

Emergency Battery Back-up

Cat. No. EM
 No Option

Internal battery pack provides 90 minutes of supplemental light at 750 lumens on 42 watt compact fluorescent lamps only.



StarView™

Black Ballast Cover

Cat. No. BBC
 No Option

For locations where complete cutoff optical control is desired, Kim's StarView™ optional matte black ballast cover can be specified. This option reduces the indirect uplight distribution for use in areas where light pollution and trespass is a concern and to promote celestial visibility at night.





Job Name:
The Place Storage-REVISED

Catalog Number:
BNB1-36LED-3K-VOLTAGE/
STANDARD COLOR

Type:

D

Notes:

LEC-STL14-41782

KIM LIGHTING

RECEIVED
City of Chesterfield

AUG 20 2014

Department of Public Services

BNB

Bounce Bollard

revision 5/31/11 • bnb.pdf

Type:
Job:
Catalog number:

Approvals:

Fixture Electrical Module Luminaire Finish Options

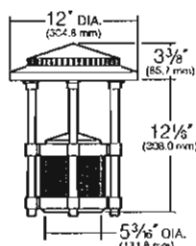
See page 4 See page 5

Date:
Page: 1 of 5

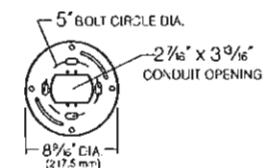
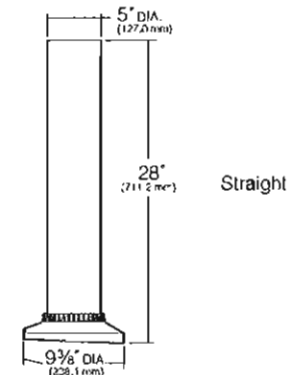
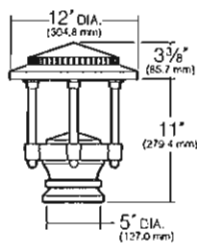
Specifications

BNB1 and BNB4
70 to 100 watt PMH
70 to 100 watt HPS
Medium Base Lamps
42 watt Compact Fluorescent
18, 27 or 36 LED

BNB1



BNB4



HUBBELL
KIM LIGHTING, INC.

Hood and Lens Frame: Die-cast, low copper (<0.6% Cu) aluminum alloy with stainless steel hinge. Hood is opened by loosening one stainless steel captive button-head socket cap screw. $\frac{3}{8}$ " thick clear flat tempered glass lens seals against the lens frame by a one-piece molded silicone gasket. Lens frame seals against the hood by a one-piece extruded and vulcanized silicone gasket.

Reflector Module: Specular Alzak® optical segments are rigidly mounted within an aluminum frame and fastened securely to the hood. A porcelain medium base socket rated 4KV is provided for HID, and a GX24q-4 universal socket is provided for fluorescent. No reflector provided for LED.

Body Support: BNB1: Die-cast, low copper (<0.6% Cu) aluminum alloy flanges compress a ribbed extruded aluminum chamber. The four heavy wall extruded aluminum support rods are mechanically fastened to the lens frame with stainless steel fasteners. The support rods are held in position through die-cast arms and mechanically fastened at the bottom with a custom aluminum bolt. The electrical wiring is channeled through a support rod with a brass bushing. **BNB4:** Heavy cast low copper (<0.6% Cu) aluminum alloy wiring chamber. The four extruded aluminum support rods are mechanically fastened between the lens frame and wiring chamber with stainless steel bolts. The wiring is channeled through the support rods.

Body Cap: Die-cast, low copper (<0.6% Cu) aluminum, retained by two captive stainless steel screws. Optional matte black finish to eliminate bounce light. See page 5.

Shaft: One-piece aluminum extrusion, .125" minimum wall thickness and two internal $\frac{3}{16}$ "-16 mounting rods sandwich shaft between base and head.

Anchor Base Plate: A heavy cast aluminum anchor base is provided for mounting to the four $\frac{3}{8}$ " x 10" x 2" zinc plated J-bolts, each with two nuts and washers. A rigid pressed hoard template is provided to secure the anchor bolts during concrete pour (5" B.C.D.)

Electrical Module: Factory mounted to a rigid harness attached to the anchor base. **HID:** High Power Factor with starting temperatures of -20°F for PMH and -40°F for HPS lamp modes. **Fluorescent:** High Power Factor with starting temperature of 0°F. **LED:** A total of 9 LED emitters configured in a rectangular array comprised together as a module. Two (2) modules for 18 LED version; three (3) modules for 27 LED version; and four (4) modules for 36 LED version. Available in 3500K and 5100K.

LED Driver: Rated for 18 LED, 27 LED or 36 LED. Universal voltage from 120 to 277V with a $\pm 10\%$ tolerance. -40°F starting temperature. All drivers are Undervriters Laboratories recognized.

Finish/Color: Super TGIC thermoset polyester powder coat paint, 2.5 mil nominal thickness, applied over a titanated zirconium conversion coating; 2500 hour salt spray test endurance rating. Standard colors are Black, Dark Bronze, Light Gray, Stealth Gray™, Platinum Silver, or White. Custom colors are available.

CAUTION: Fixtures must be grounded in accordance with national, state and/or local electrical codes. Failure to do so may result in serious personal injury.

Listings and Ratings

ETL ¹ to UL Standards 1598 & 8750	IP46 Rated	CE	25C Ambient
(FCO) Full Cutoff ²			

¹Suitable for wet locations

²Dark Sky Legislation Compliant

KIM LIGHTING RESERVES THE RIGHT TO CHANGE SPECIFICATIONS WITHOUT NOTICE.

**BNB**

Bounce Bollard

revision 5/31/11 • bnb.pdf

Type:

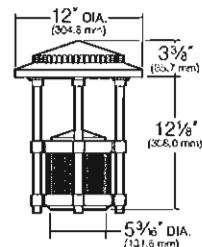
Job:

Page: 2 of 5

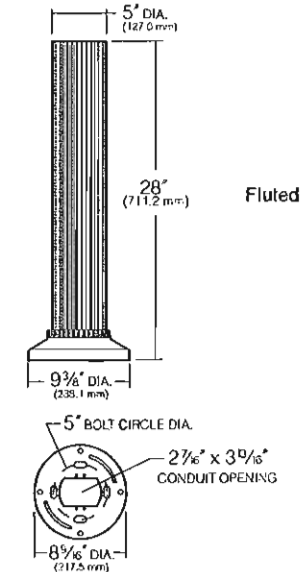
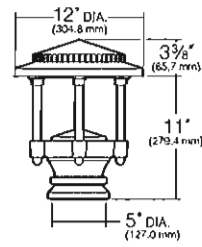
Specifications

BNB2 and BNB5
70 to 100 watt PMH
70 to 100 watt HPS
Medium Base Lamps
42 watt Compact Fluorescent
18, 27 or 36 LED

BNB2



BNB5



Fluted

Hood and Lens Frame: Die-cast, low copper (<0.6% Cu) aluminum alloy with stainless steel hinge. Hood is opened by loosening one stainless steel captive button-head socket cap screw. $\frac{3}{8}$ " thick clear flat tempered glass lens seals against the lens frame by a one-piece molded silicone gasket. Lens frame seals against the hood by a one-piece extruded and vulcanized silicone gasket.

Reflector Module: Specular Alzak® optical segments are rigidly mounted within an aluminum frame and fastened securely to the hood. A porcelain medium base socket rated 4KV is provided for HID, and a GX24q-4 universal socket is provided for fluorescent. No reflector provided for LED.

Body Support: BNB2: Die-cast, low copper (<0.6% Cu) aluminum alloy flanges compress a ribbed extruded aluminum chamber. The four heavy wall extruded aluminum support rods are mechanically fastened to the lens frame with stainless steel fasteners. The support rods are held in position through die-cast arms and mechanically fastened at the bottom with a custom aluminum bolt. The electrical wiring is channeled through a support rod with a brass bushing. **BNB5:** Heavy low copper alloy (<0.6% Cu) cast aluminum wiring chamber. The four extruded aluminum support rods are mechanically fastened between the lens frame and wiring chamber with stainless steel bolts. The wiring is channeled through the support rods.

Body Cap: Die-cast, low copper (<0.6% Cu) aluminum, retained by two captive stainless steel screws. Optional matte black finish to eliminate bounce light. See page 5.

Shaft: One-piece fluted aluminum extrusion, .188" minimum wall thickness and two internal $\frac{3}{16}$ "-16 mounting rods sandwich shaft between base and head.

Anchor Base Plate: A heavy cast aluminum anchor base is provided for mounting to the four $\frac{3}{4}$ " x 10" + 2" zinc plated J-bolts, each with two nuts and washers. A rigid pressed board template is provided to secure the anchor bolts during concrete pour (S.B.C.D.)

Electrical Module: Factory mounted to a rigid harness attached to the anchor base. **HID:** High Power Factor with starting temperatures of -20°F for PMH and -40°F for HPS lamp modes. **Fluorescent:** High Power Factor with starting temperature of 0°F. **LED:** A total of 9 LED emitters configured in a rectangular array comprised together as a module. Two (2) modules for 18 LED version; three (3) modules for 27 LED version; and four (4) modules for 36 LED version. Available in 3500K and 5100K.

LED Driver: Rated for 18 LED, 27 LED or 36 LED. Universal voltage from 120 to 277V with a $\pm 10\%$ tolerance. -40°F starting temperature. All drivers are Underwriters Laboratories recognized.

Finish/Color: Super TGIC thermoset polyester powder coat paint, 2.5 mil nominal thickness, applied over a titanated zirconium conversion coating; 2500 hour salt spray test endurance rating. Standard colors are Black, Dark Bronze, Light Gray, Stealth Gray™, Platinum Silver, or White. Custom colors are available.

CAUTION: Fixtures must be grounded in accordance with national, state and/or local electrical codes. Failure to do so may result in serious personal injury.

Listings and Ratings

UL cUL 1598 ¹	IP46 Rated	CE	25C Ambient
(FCO) Full Cutoff ²			

¹Suitable for wet locations²Dark Sky Legislation Compliant

KIM LIGHTING RESERVES THE RIGHT TO CHANGE SPECIFICATIONS WITHOUT NOTICE.



HUBBELL LIGHTING, INC.

**BNB**

Bounce Bollard

revision 5/31/11 • bnb.pdf

Type:

Job:

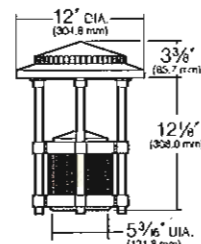
Page: 3 of 5

Specifications

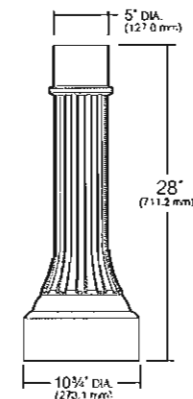
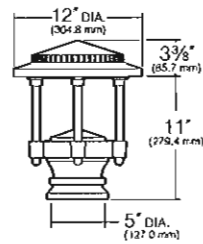
BNB3 and BNB6

70 to 100 watt PMH
70 to 100 watt HPS
Medium Base Lamps
42 watt Compact Fluorescent
18, 27 or 36 LED

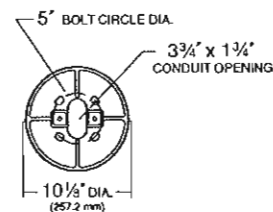
BNB3



BNB6



Traditional



Hood and Lens Frame: Die-cast, low copper (<0.6% Cu) aluminum alloy with stainless steel hinge. Hood is opened by loosening one stainless steel captive button-head socket cap screw. $\frac{3}{8}$ " thick clear flat tempered glass lens seals against the lens frame by a one-piece molded silicone gasket. Lens frame seals against the hood by a one-piece extruded and vulcanized silicone gasket.

Reflector Module: Specular Alzak® optical segments are rigidly mounted within an aluminum frame and fastened securely to the hood. A porcelain medium base socket rated 4KV is provided for HID, and a GX24q-4 universal socket is provided for fluorescent. No reflector provided for LED.

Body Support: **BNB3:** Die-cast, low copper (<0.6% Cu) aluminum alloy flanges compress a ribbed extruded aluminum chamber. The four heavy wall extruded aluminum support rods are mechanically fastened to the lens frame with stainless steel fasteners. The support rods are held in position through die-cast arms and mechanically fastened at the bottom with a custom aluminum bolt. The electrical wiring is channeled through a support rod with a brass bushing. **BNB6:** Heavy low copper alloy (<0.6% Cu) cast aluminum wiring chamber. The four extruded aluminum support rods are mechanically fastened between the lens frame and wiring chamber with stainless steel bolts. The wiring is channeled through the support rods.

Body Cap: Die-cast, low copper (<0.6% Cu) aluminum, retained by two captive stainless steel screws. Optional matte black finish to eliminate bounce light. See page 5.

Shaft: One-piece cast aluminum .188" minimum wall thickness and two internal $\frac{3}{8}$ "-16 mounting rods sandwich shaft between base and head.

Anchor Base Plate: A heavy cast aluminum anchor base is provided for mounting to the four $\frac{3}{4}$ " x 10" + 2" zinc plated J-bolts, each with two nuts and washers. A rigid pressed board template is provided to secure the anchor bolts during concrete pour (5" B.C.D.)

Electrical Module: Factory mounted to a rigid harness attached to the anchor base. **HID:** High Power Factor with starting temperatures of -20°F for PMH and -40°F for HPS lamp modes. **Fluorescent:** High Power Factor with starting temperature of 0°F. **LED:** A total of 9 LED emitters configured in a rectangular array comprised together as a module. Two (2) modules for 18 LED version; three (3) modules for 27 LED version; and four (4) modules for 36 LED version. Available in 3500K and 5100K.

LED Driver: Rated for 18 LED, 27 LED or 36 LED. Universal voltage from 120 to 277V with a $\pm 10\%$ tolerance. -40°F starting temperature. All drivers are Underwriters Laboratories recognized.

Finish/Color: Super TGIC thermoset polyester powder coat paint, 2.5 mil nominal thickness, applied over a titanated zirconium conversion coating; 2500 hour salt spray test endurance rating. Standard colors are Black, Dark Bronze, Light Gray, Stealth Gray™, Platinum Silver, or White. Custom colors are available.

CAUTION: Fixtures must be grounded in accordance with national, state and/or local electrical codes. Failure to do so may result in serious personal injury.

Listings and Ratings

UL cUL 1598 ¹	IP46 Rated	CE	25C Ambient
(FCO) Full Cutoff ²			

¹Suitable for wet locations²Dark Sky Legislation Compliant

KIM LIGHTING RESERVES THE RIGHT TO CHANGE SPECIFICATIONS WITHOUT NOTICE.





Job Name:
The Place Storage-REVISED

Catalog Number:
BNB1-36LED-3K-VOLTAGE/
STANDARD COLOR
Notes:

Type:
D
LEC-STL14-41792



BNB
Bounce Bollard
revision 5/31/11 • bnb.pdf

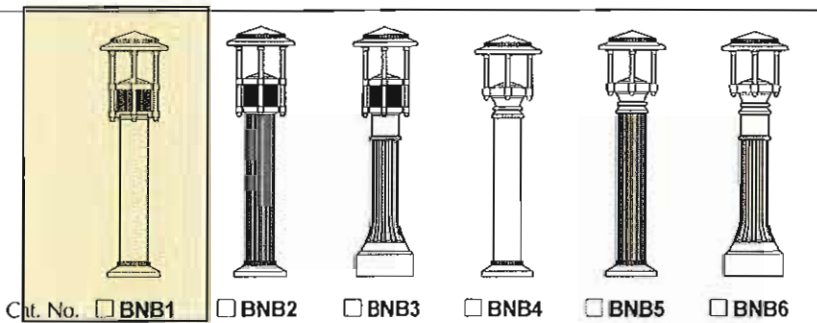
Type:
Job:

Page: 4 of 5



Standard Features

Fixture



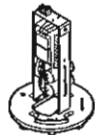
Cat. No. BNB1 BNB2 BNB3 BNB4 BNB5 BNB6

Electrical Module

PMH = Pulse Start Metal Halide
HPS = High Pressure Sodium
PL = Compact Fluorescent
LED = Light Emitting Diode

Lamp Watts Lamp Type Line Volts
70 PMH 120

For PMH, HPS and PL.
See footnote 2 below for LED



NOTE: For lamp/ballast information outside of the U.S.A. and Canada, please consult your local Kim representative.

Cat. Nos. for Electrical Modules available:

	Pulse Start Metal Halide		High Pressure Sodium	
	<input type="checkbox"/> 70PMH120	<input type="checkbox"/> 100PMH120	<input type="checkbox"/> 70HPS120	<input type="checkbox"/> 100HPS120
	<input type="checkbox"/> 70PMH208	<input type="checkbox"/> 100PMH208	<input type="checkbox"/> 70HPS208	<input type="checkbox"/> 100HPS208
	<input type="checkbox"/> 70PMH240	<input type="checkbox"/> 100PMH240	<input type="checkbox"/> 70HPS240	<input type="checkbox"/> 100HPS240
	<input type="checkbox"/> 70PMH277	<input type="checkbox"/> 100PMH277	<input type="checkbox"/> 70HPS277	<input type="checkbox"/> 100HPS277
	<input type="checkbox"/> 70PMH347	<input type="checkbox"/> 100PMH347	<input type="checkbox"/> 70HPS347	<input type="checkbox"/> 100HPS347
Lamp	ED-17, Coated	ED-17, Coated	ED-17, Coated	ED-17, Coated
Socket	Medium Base	Medium Base	Medium Base	Medium Base
ANSI Ballast Type	M-98, M-143	M-90, M-140	S62	S54
	Compact Fluor.	LED		
	<input type="checkbox"/> 42PL120 ¹	<input type="checkbox"/> 18L3KUV ²	<input type="checkbox"/> 27L3KUV ²	<input checked="" type="checkbox"/> 36L3KUV ²
	<input type="checkbox"/> 42PL208 ¹	<input type="checkbox"/> 18L5KUV ²	<input type="checkbox"/> 27L5KUV ²	<input type="checkbox"/> 36L5KUV ²
	<input type="checkbox"/> 42PL240 ¹			
	<input type="checkbox"/> 42PL277 ¹	IES Type 1	IES Type 3	IES Type 5
Lamp	Compact Fluor.	LED	LED	LED
Socket	GX24q-4	N/A	N/A	N/A

¹42PL operates one 26, 32, or 42 watt lamp at 120 thru 277 volts (50-60 Hz).

NOTE: Coated lamps are recommended.

²For LED, 18L = 18 LED Emitters; 27L = 27 LED Emitters; 36L = 36 LED Emitters. 3K = 3500K color temperature; 5K = 5100K color temperature; UV = Universal Voltage from 120 to 277V with a ± 10% tolerance.

SPECIFY COLOR

Luminaire Finish

Super TGIC powder coat paint over a titanated zirconium conversion coating on fixture and shaft.

Color: Black Dark Bronze Light Gray Stealth Gray™ Platinum Silver White Custom Color³
Cat. No.: BL DB LG SG PS WH CC

³Custom colors subject to additional charges, minimum quantities and extended lead times. Consult representative. Custom color description: _____



Job Name:
The Place Storage-REVISED

Catalog Number:
BNB1-36LED-3K-VOLTAGE/
STANDARD COLOR
Notes:

Type:

D

LEC-STL14-41792

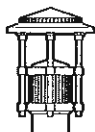


BNB
Bounce Bollard
revision 5/31/11 • bnb.pdf

Type:

Job:

Page: 5 of 5



Optional Features

Fusing (internal only):

Cat. No. (see chart at right)
 No Option

High temperature fuse holders factory installed inside the fixture housing. Fuse is included.

Line Volts: 120V 208V 240V 277V 347V
Cat. No.: SF DF DF SF SF

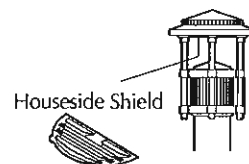


Single Fuse

Houseside Shield

Cat. No. HS
 No Option

Optional shield made of stamped louvered aluminum allows streetside light to pass while blocking houseside light. Blackened reflector panels within the reflector also reduces the houseside reflection.



Houseside Shield

Matte Black Body Cap:

Cat. No. BBC
 No Option

For locations where complete cutoff optical control is desired, an Optional Matte Black Body Cap can be specified. This significantly reduces the indirect up-light distribution, providing complete cutoff. To further reduce the nighttime visual presence of the fixture, specify Black or Dark Bronze luminaire finish.



Optional Cap

Textured Glass Lens

Cat. No. TG
 No Option

Unique textured glass reduces LED glare and improves visual comfort.

Emergency Battery Back-up

Cat. No. EM
 No Option

Internal battery pack provides 90 minutes of supplemental light at 23% of initial lamp lumens for 26, 32, or 42 watt compact fluorescent lamps.



Battery Back-up

Cold-Pack Emergency Battery Pack

Cat. No. EM-CP
 No Option

The EM-CP option is a temperature controlled ballast designed to maintain operation without interruption within a range of hi/low ambient temperatures, -20°C to +55°C.

Internal Cold-Pack emergency battery pack provides up to 90 minutes of supplemental light. See following table for max. lumens output by lamps.



cold-pack battery back-up

Lamp (4-Pin)	1 lamp lumens
42W	750
32W	575
26W	450