




Memorandum

To: Mike Geisel, City Administrator

From: TW Dieckmann, Director of Parks, Recreation and Arts 

Date: May 10, 2024

Subject: CVAC vehicle charging station proposal from Perfect Game

This memo is to provide you and the Parks, Recreation and Arts Committee of Council (PRAcc) more information about a proposal from Perfect Game . The attached presentation outlines a Perfect Game proposal to install six (6) electric vehicle charging stations in the main parking lot, just west of field E4 at Chesterfield Valley Athletic Complex (CVAC).

As part of our agreement with Perfect Game, David Kinsey coordinates all sponsorship proposals on behalf of the City of Chesterfield and Perfect Game. This proposal is from Evolve Power Solutions. The proposal covers all costs, including equipment, installation, ongoing maintenance, and insurance. The City and PG would each get 3% equal shares of a 6% revenue share. Revenue projections are included on slide 8. Technical specifications and pictures begin on slide 9, with our proposed model information highlighted in yellow. This could be a combination of Tesla and universal plug-ins or all the same of one or the other if we choose. They are proposing a five-year agreement. This would include opportunities to extend, remove or purchase at the end of the initial agreement.

Our agreement with Perfect Game gives staff authority to decide whether to accept this proposal. After researching the product and speaking with City leadership, we plan to accept the proposal, choosing to install six charging stations.

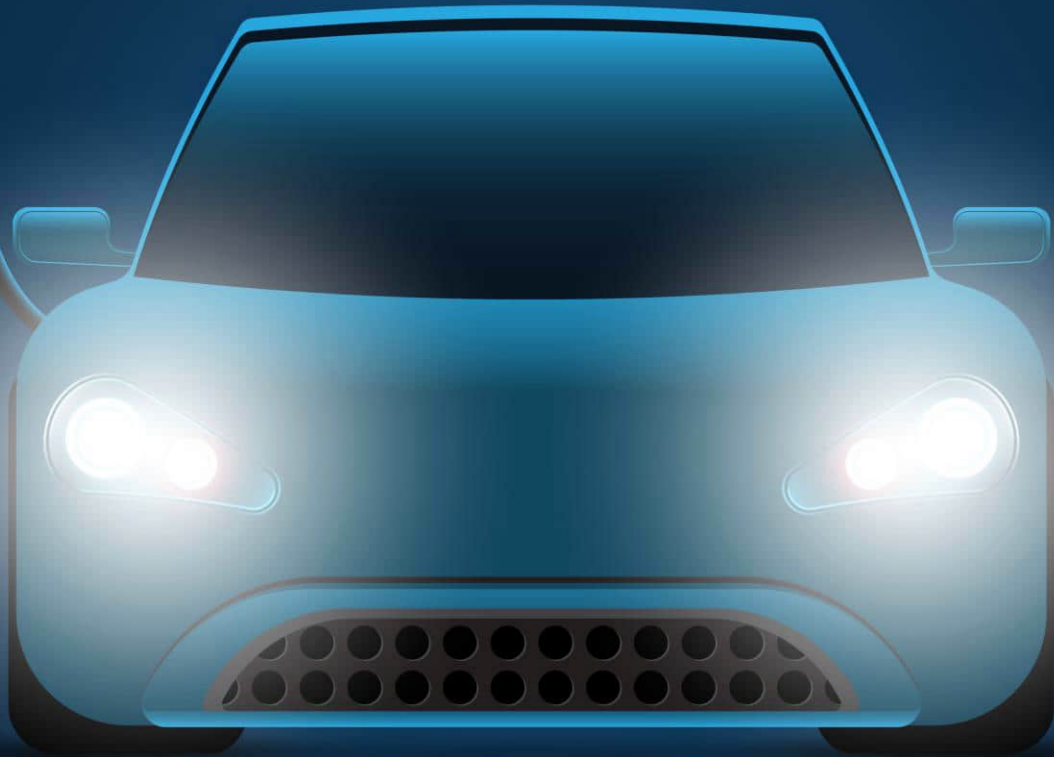
However, we wanted the PRAcc to be aware of this opportunity before we proceed. I recommend adding this to the next PRAcc agenda for informational purposes. Please let me know if you need additional information.

Please forward to the PR&A Committee for informational purposes. No action is required, but it is important that the Committee be advised as to the addition of physical facilities.

 2024-5-15

WOLVE

POWER SOLUTIONS



Perfect Game
Chesterfield Valley Athletic Complex

Modern EV Charging Management

HOW IT WORKS

ASSESS

We recommend the best solution for your community.

DEPLOY

We facilitate the installation of charging stations.

MANAGE

We run your network with technology and consultative support

COLLECT

We collect payments for use of charging station and disperse your earnings to you

Connecting the EV ecosystem of utilities, businesses, charging stations, and drivers with:

- Turnkey certified charging stations
- Software platform with reliable uptime
- Insights and usage data at your fingertips
- Trusted EV driver app
- 24/7 customer support

We're here to make EV charging simple and cost-effective for you.

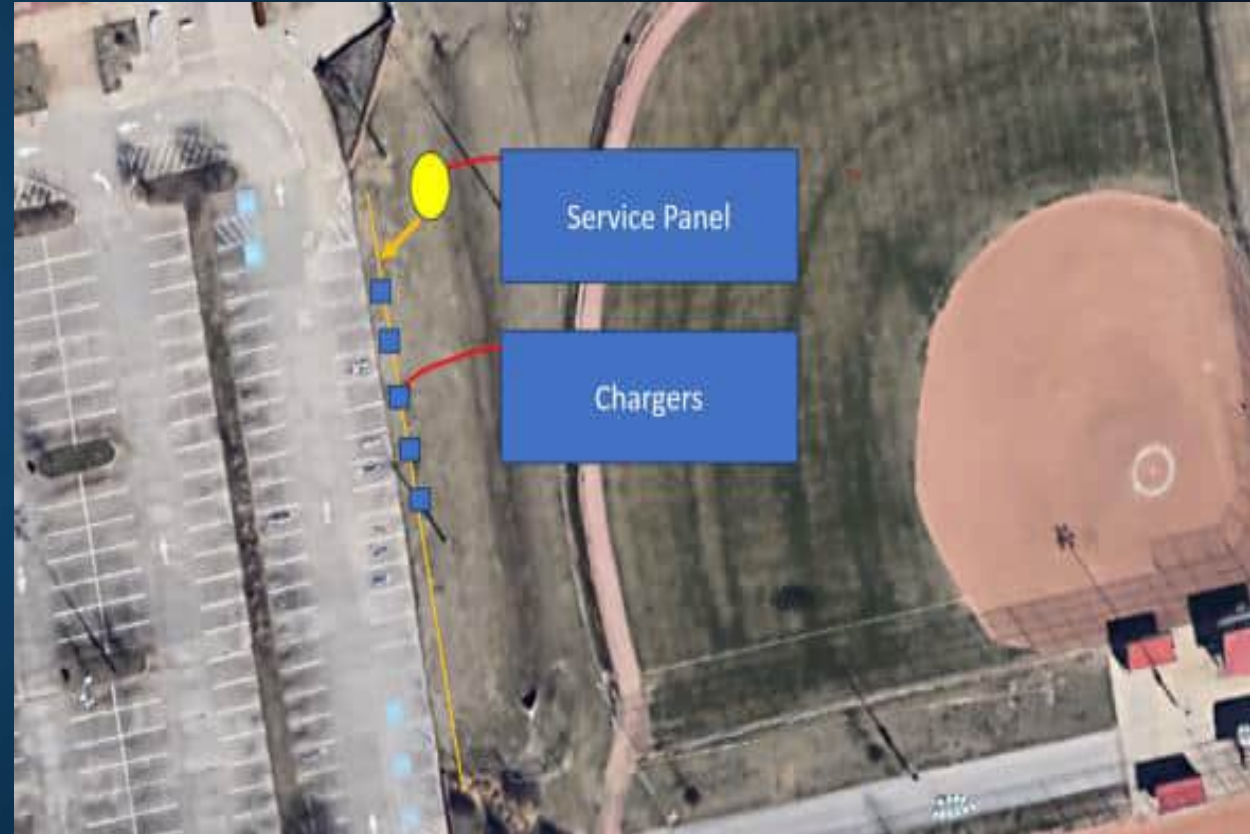
- Give priority access to your guests, provide service to the community, and control energy costs with real-time data on usage and performance.

- Get help when you need it, day or night, with 24/7 support for you and your guests.



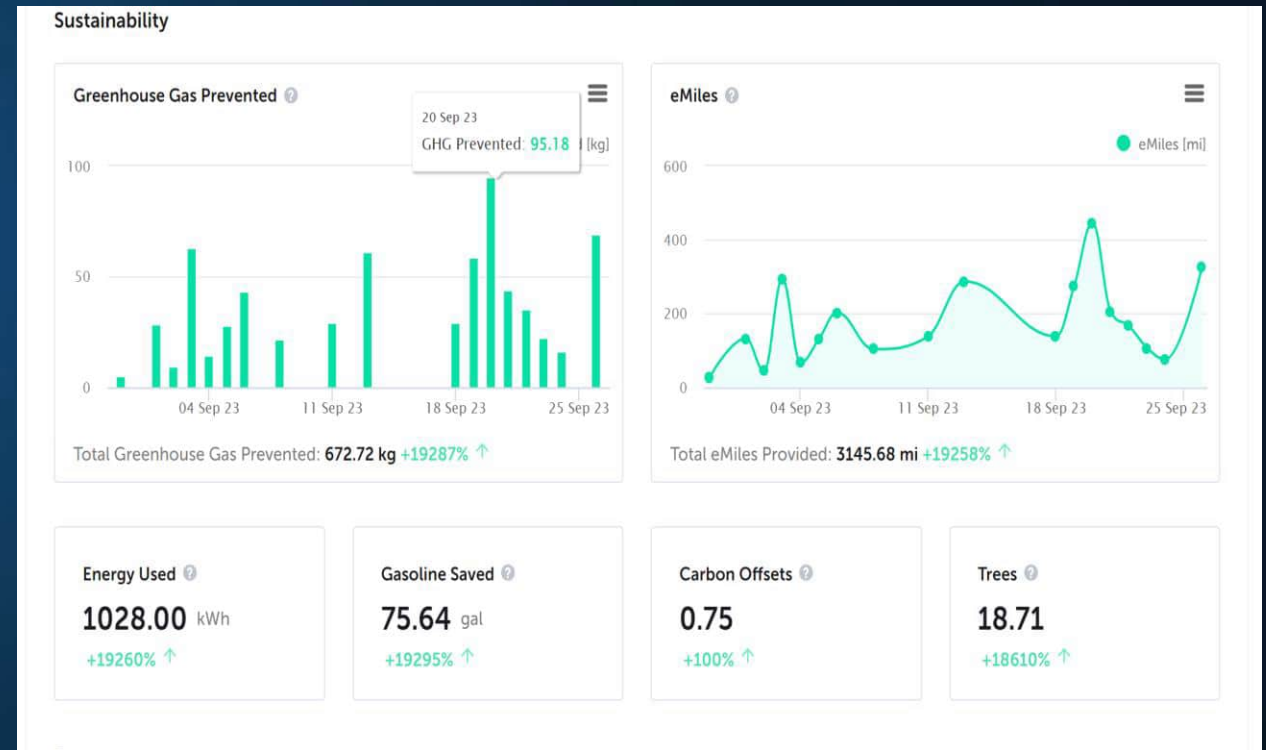
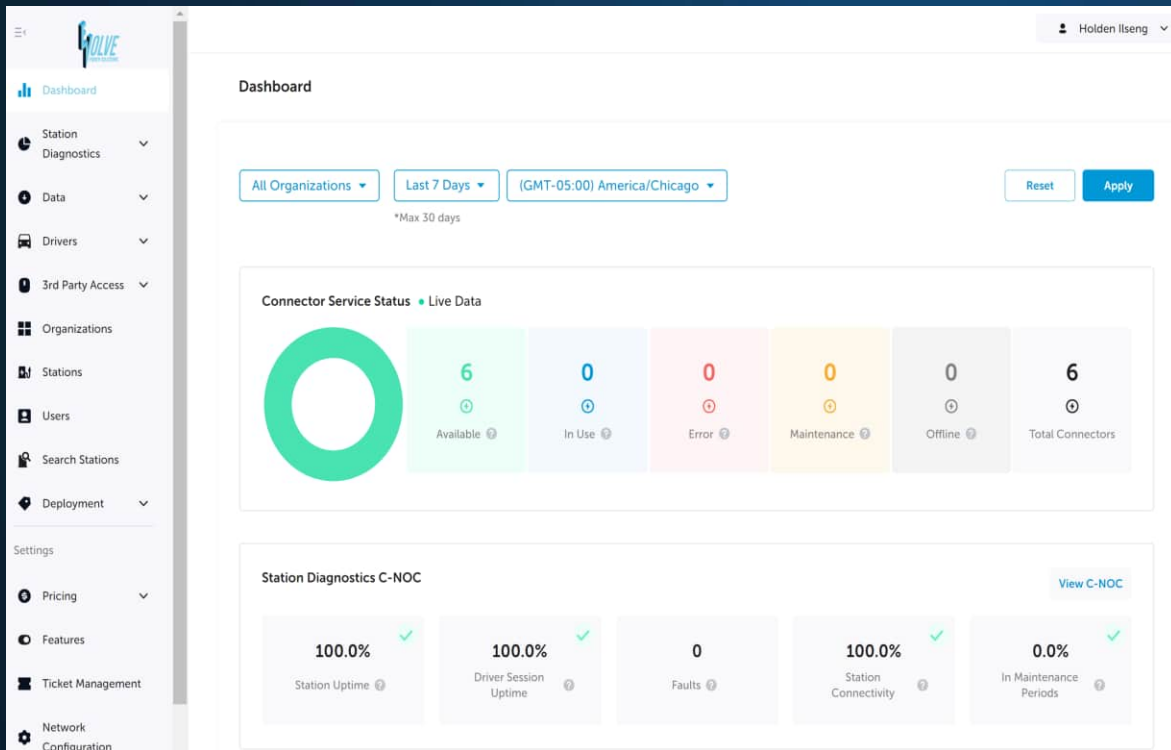
Project Details

- New 600amp 120/208V standalone service by utility pole in parking lot.
- Trenching to new service and to each new pedestal mount charger (1-10) included
- Wiring and Terminations at all new EV chargers included
- Install Bollards
- Terminate, energy and commission
- Permit and inspection included



State of the Art Software

Through our innovative cloud platform, we guide companies in managing networks of chargers and deliver a seamless EV charging experience that empowers drivers.



Fully Turnkey EV Charging Management

ASSESSMENT - We will determine the correct location and number of charging stations needed for your location

PERMITTING - Covering all permitting costs and applications making the installation quick and easy

INSTALLATION - Covering ALL costs of installation of your location's chargers and charging infrastructure

24/7 MANAGEMENT OF SYSTEM & SOFTWARE - Full management of your charging network – ensuring your chargers are always up and operational

MAINTENANCE - Most other companies want to charge you for maintenance. WE DO NOT

REVENUE – Providing Perfect Game and Chesterfield with equal shares of a 6% revenue share

Additional Information

- Evolve can use a separate meter if financially it wasn't unreasonable. However, for projects Evolve has completed without a separate meter, Evolve calculates percentage of meter use by seeing the utility bill for the facility and subtracting usage of the charging stations and paying the usage cost back to the facility
- Location for stations was chosen by Evolve installers and staff and chosen based on serving the need of visitors and also being financially attainable
- 5 year agreement; Line items are in place on their contracts regarding removal of stations or option to buy once the contract ends
- Evolve can provide annual/monthly/daily usage per kwh along with the rates they charge
- Chargers can be used 24/7
- Evolve insures all charging stations

Projected Revenue (based on 6 stations)

Controls
 KW/hr 7.4

 HC 4 Hours Charged
 NRI 3%
 CPP 1 Charges per day

											PG Chesterfield Monthly Projections		
Notes	State	City	Property	Location	Chargers	Energy \$/Kw	Hourly	Start Up	KW/hr	Low Rev	Mid Rev	High Rev	
	Mo	Chesterfield	PG	Chesterfield Valley Athletic Complex	6	\$ 0.13			\$ 0.59	\$ 74.51	\$ 111.76	\$ 149.01	

PG Chesterfield Annual Revenue Projections					
Year	State	Low	Mid	High	
2025	MO	\$ 894.08	\$ 1,341.12	\$ 1,788.16	
2027	MO	\$ 1,698.75	\$ 2,548.13	\$ 3,397.51	
2029	MO	\$ 3,661.84	\$ 5,492.77	\$ 7,323.69	

AXX SERIES

(North America)

48A-11.5kW Single Phase

(EU)

32A-22kW Three Phase

(North America)

80A-19.2kW Single Phase

(optional color)

EV Wall Mount

AC Charger

FEATURES



Residential and commercial EV charging



Wired/wireless connection for Central Management System



Support for RFID Card and QR Code for User Authentication and Management



Input: 200Vac~240Vac



Modern, ergonomic and custom design



5-inch LCD display



IP56/NEMA 4 Rated for Indoor/Outdoor Applications



Charging Interface: SAE J1772 (Type 1)/IEC 62196-2 (Type 2)



OCPP 1.6 JSON (Upgradeable to 2.0 OTA)



ISO 15118 Protocol



Local Load Management, Making the Field Power Configuration Planning of Charging Stations More Flexible



Over the Air Technology



For information on the optional charging pedestal, please refer to the accessory section on page 77.

INDUSTRY



Residential



Commercial Building



Shopping Center/
Hospitality



Outdoor Parking

EV WALL MOUNT AC CHARGER

SPECIFICATION

Model Name	AXLU191	AXSC191
Safety	UL/CUL (North America)	CNS (Taiwan)
Picture	<p>Technical drawing showing dimensions: 198.8in (height), 116.1in (width), 295 (width), and 62.2in (depth).</p>	

Power Specification

AC Input	Input Rating	Single-phase : 200~240Vac
	AC Input Connection	L1/L2/GND or L/N/PE
	Input Current	80A
	Frequency	50Hz/60Hz
AC Output	Output Current	80A

User Interface & Control

Display	LED Indicator lamp(standard), 5" LCD Display (Optional)
User Authentication	ISO/IEC 14443 Type A/B / FeliCa (Support white list)
Meter	Meter IC (1% Accuracy)

Communication

External	LAN+WiFi (standard) or LAN+4G+WiFi (Optional)
Internal	OCPP 1.6 JSON (Upgradeable to 2.0) / EEBUS

Environmental

Operating Temperature	-30°C to +50°C (standard) or -20°C to +50°C (with payment system)
-----------------------	---

-22 F to 122F

-4F to 122F

Humidity	<95% (RH) @50°C 122F	
Altitude	≤ 2000m 6561ft	
IP Level	NEMA TYPE 4/IK08	IP55/IK08
Cooling Method	Natural Cooling	

Mechanical

Dimension(WxDxH)	295x158x505 116.1x62.2x198.8in	
Weight	<8kg (with socket); <11kg (with cable) <15.4lb (w/ socket); <22lb (w/cable)	
Cable Length	5m / 7.5m (Optional with Optional Cable Management) 16.4ft/24.6ft	

Protection

RCD/CCID	CCID 20	RCD TYPE B 30mA
Input Side	UVP, OVP, Surge Protection, Ground Fault	
Output Side	OCP, Control Pilot Fault, Residual Current Protection	
Internal	OTP, Relay Welding Detection, CCID Self-Test, MCU Function Fault Detection	

Regulation

Certificate	UL2594, UL2231-1/-2 CTEP Energy Star	CNS15511-1 (2021 version) CNS15511-21-2 2021 version) CNS15700-1 (2017 version) CNS15700-2 (2021 version)
Wireless Certification	FCC/IC	NCC
Charging Interface	SAEJ1772 Type 1 Plug	CNS 15700-1 TYPE 1 Plug





CVAC 2024 Tournament Schedule



The following tournaments are currently under contract for the 2024 Spring, Summer and Fall seasons at the Chesterfield Valley Athletic Complex. We are excited to welcome back all teams to Chesterfield!

Spring/Summer

<i>Date</i>	<i>Tournament Provider</i>	<i>Number of Fields Used</i>
March 22-24	Perfect Game	8 Fields
March 29-31	Perfect Game	8 Fields
April 5-7	CBSA Baseball/Softball	16 Fields
April 12-14	Perfect Game	8 Fields
April 19-21	Perfect Game	8 Fields
April 26-28	CBSA	16 Fields
May 3-5	Perfect Game	8 Fields
May 10-12	Perfect Game	8 Fields
May 17-19	Perfect Game	8 Fields
May 24-27	Perfect Game	16 Fields
May 31-June 2	CBSA Baseball/Softball	16 Fields
June 7-9	Perfect Game	8 Fields
June 14-16	Perfect Game	12 Fields
June 21-26	Perfect Game	12 Fields
June 21-23	Top Gun Events	4 Fields
June 27-30	Perfect Game	16 Fields
July 5-7	Perfect Game	8 Fields
July 11-14	Perfect Game	8 Fields

July 12-14	Play9	4 Fields
July 19-21	Perfect Game	4 Fields
July 19-21	Greater Midwest Baseball	8 Fields
July 20	3V3 Live	7 Fields
July 26-28	Perfect Game	8 Fields
August 2-4	Greater Midwest Baseball	12 Fields
August 9-11	Perfect Game	4 Fields
August 9-11	Ascension	10 Fields
August 23-25	Perfect Game	8 Fields
September 6-7	Rockwood Softball	4 Fields
September 6-8	Perfect Game	8 Fields
September 13-15	CBSA Softball/Baseball	16 Fields
September 20-22	Perfect Game	8 Fields
Sept 27-29	Perfect Game	8 Fields
Oct 4-6	Perfect Game	16 Fields
Oct 11-13	Perfect Game	16 Fields
Oct 18-20	Perfect Game/Showcase Softball	16 Fields
Oct 25-27	Perfect Game/Showcase Softball	16 Fields