

REVISIONS	BY
2/5/12	RAM

landscape
TECHNOLOGIES

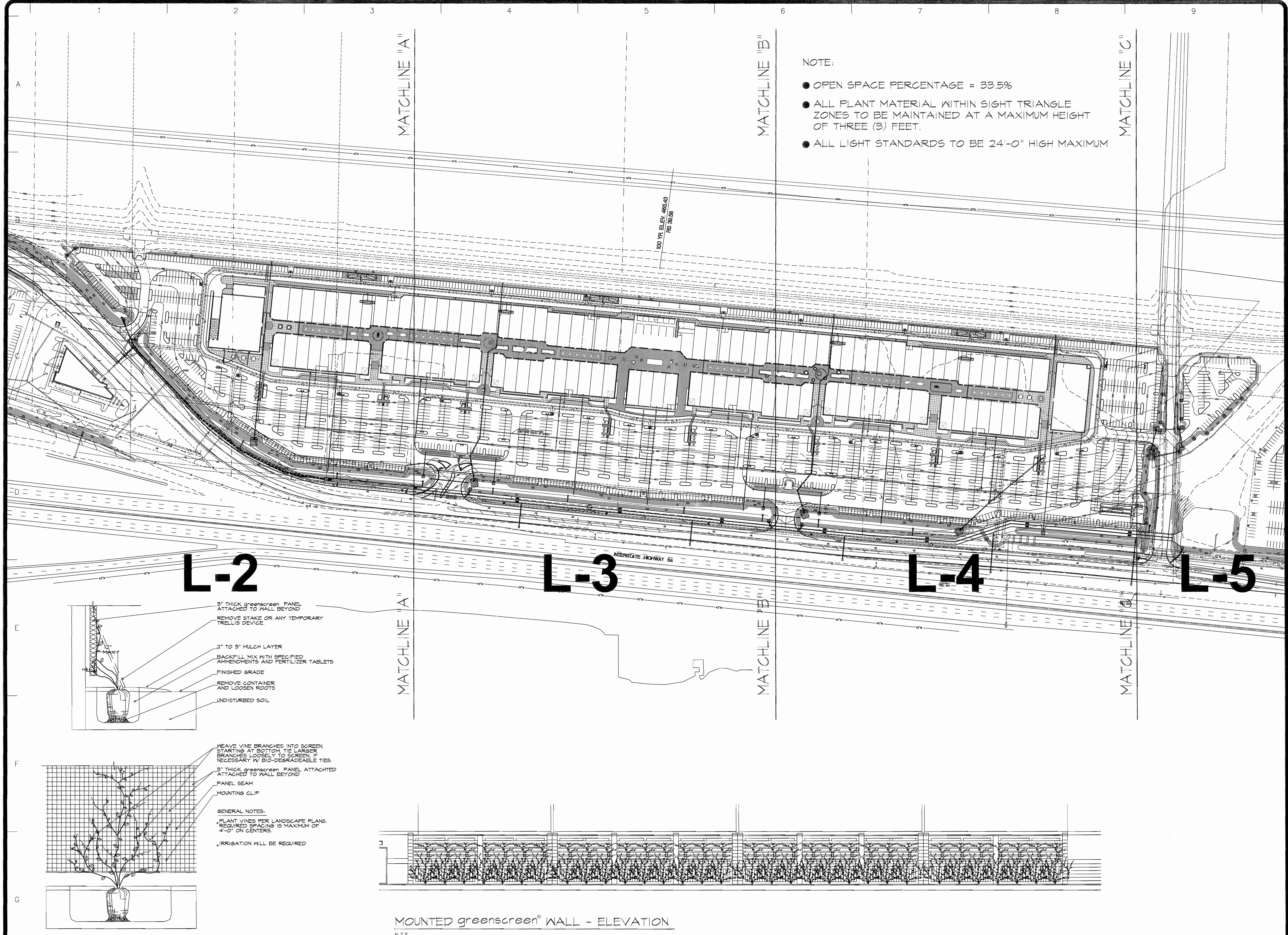
67 Jacopa Creek Drive (636) 428-1250
St. Charles, Missouri 63004 Fax: (636) 428-4563
MO Landscape Architectural Corporation #2009008792

RANDALL W. MARDIS
REGISTERED PROFESSIONAL ARCHITECT
STATE OF MISSOURI
NUMBER 1137
DATE 2/15/12

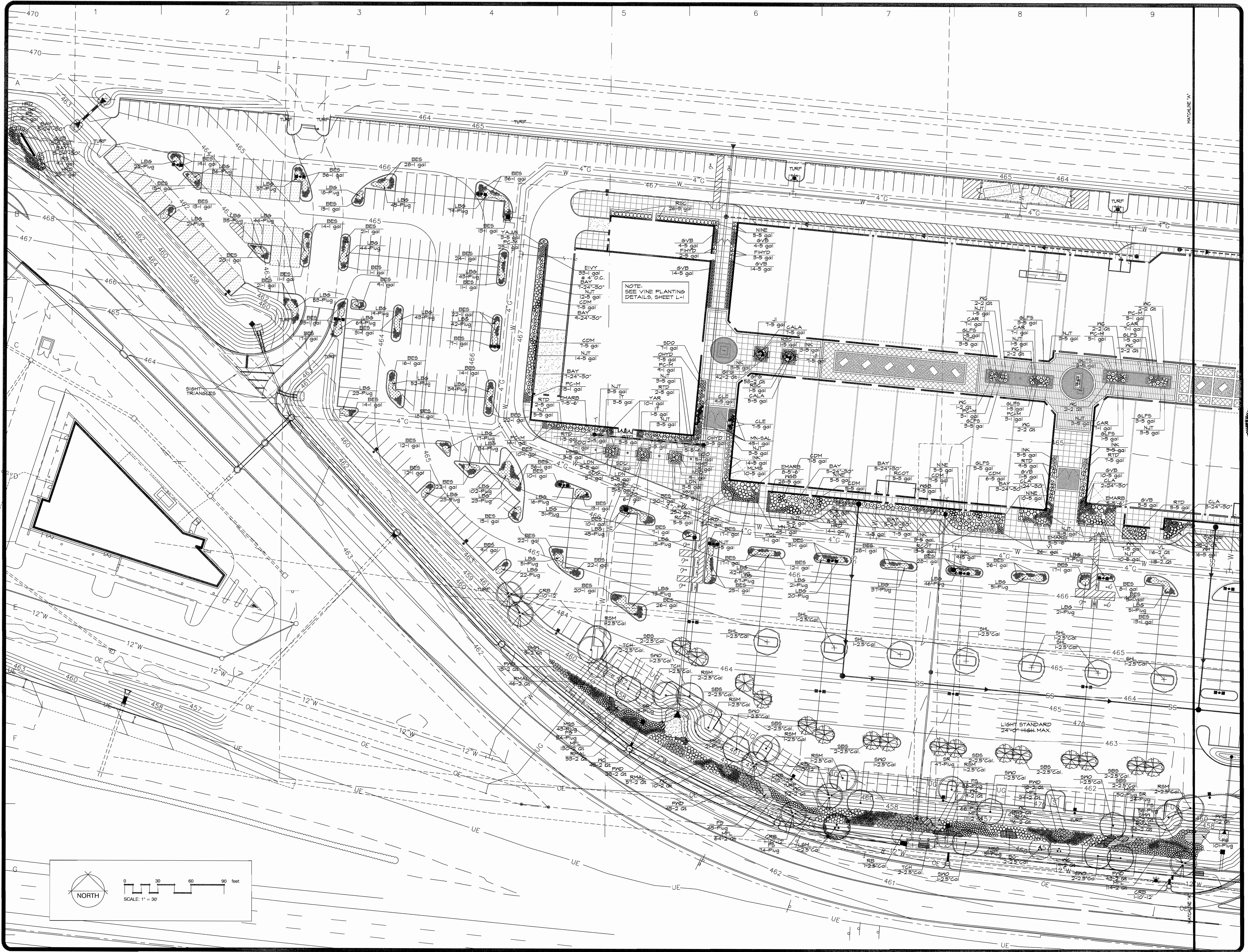
RANDALL W. MARDIS
REGISTERED PROFESSIONAL ARCHITECT
STATE OF MISSOURI
NUMBER 68304
DATE 2/15/12

LANDSCAPE MASTER PLAN FOR THE PROPOSED
Chesterfield Outlets
CHESTERFIELD, MISSOURI

DRAWN
R. MARDIS
CHECKED
RAM/GJB
DATE
2/9/12
SCALE
1"=100'-0"
JOB NO.
2011-164
SHEET
L-1
OF SIX SHEETS



greenscreen® VINE PLANTING DETAIL
N.T.S.
SECTION AND ELEVATION - TYPICAL FOR WALL MOUNTED APPLICATION



REVISIONS	BY
2/15/12	RMM

landscape
TECHNOLOGIES

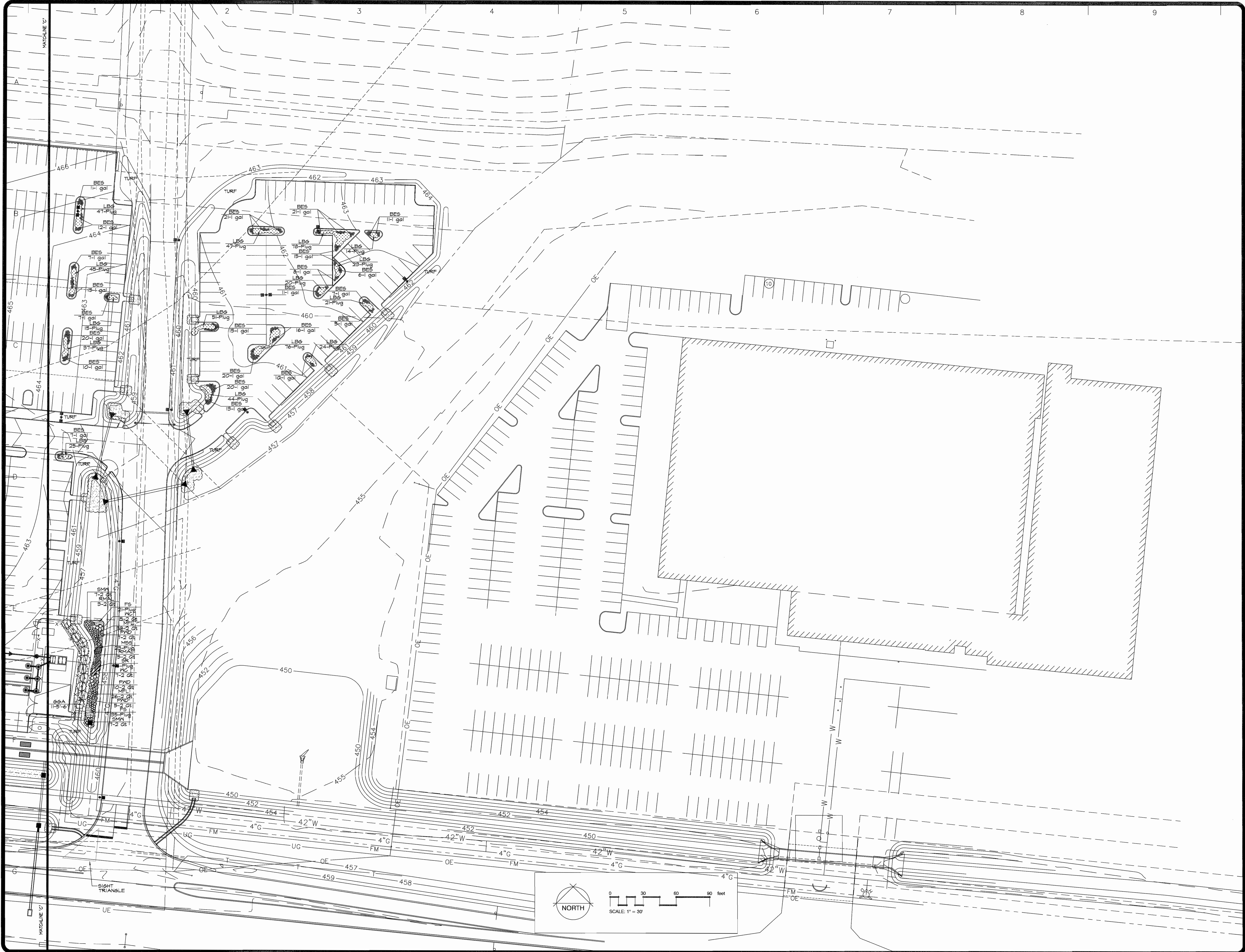
RANDALL W. MARDIS
REGISTERED LANDSCAPE ARCHITECT
NO. 0000019

DATE: 2/15/12

611 Jacobs Creek Drive
St. Charles, Missouri 63304
Tel: (636) 423-1555
Fax: (636) 423-1559
MO Landscape Architectural Corporation #000000182

**PLANTING PLAN FOR THE PROPOSED
Chesterfield Outlets
CHESTERFIELD, MISSOURI**

DRAWN	R. MARDIS
CHECKED	RMM/GLB
DATE	2/9/12
SCALE	1"=30'-0"
JOB No.	2011164
SHEET	L-2
OF SIX SHEETS	



REVISIONS	BY
2/15/12	RMH

landscape
TECHNOLOGIES

67 Jacobs Creek Drive
St. Charles, Missouri 63304
Tel: (636) 428-1250
Fax: (636) 428-4669
MO Landscape Architectural Corporation #2008009182

REGISTERED ARCHITECT
STATE OF MISSOURI

RANDALL W. MARDIS
NUMBER 0000019
DATE 2/15/12

PLANTING PLAN FOR THE PROPOSED
Chesterfield Outlets
CHESTERFIELD, MISSOURI

DRAWN
R. MARDIS

CHECKED
RMH/GB

DATE
2/15/12

SCALE
1"=30'-0"

JOB No.
2011-164

SHEET
L-5

OF SIX SHEETS

LANDSCAPE GUIDELINE SPECS:

GENERAL:

- 1.) All natural vegetation shall be maintained where it does not interfere with construction or the permanent plan of operation. Every effort possible shall be made to protect existing structures or vegetation from damage due to equipment usage. Contractor shall at all times protect all materials and work against injury to public.
- 2.) The landscape contractor shall be responsible for any coordination with other site related work being performed by other contractors. Refer to architectural drawings for further coordination of work to be done.
- 3.) Underground facilities, structures and utilities must be considered approximately only. There may be others not presently known or shown. It shall be the landscape contractor's responsibility to determine or verify the existence of and exact location of the above (Call 1-800-DIG-RITE).
- 4.) Plant material are to be planted in the same relationship to grade as was grown in nursery conditions. All planting beds shall be cultivated to 6" depth minimum and graded smooth immediately before planting of plants. Plant groundcover to within 12" of trunk of trees or shrubs planted within the area.
- 5.) It shall be the landscape contractor's responsibility to:
 - A.) Verify all existing and proposed features shown on the drawings prior to commencement of work.
 - B.) Report all discrepancies found with regard to existing conditions or proposed design to the landscape architect immediately for a decision.
 - C.) Stake the locations of all proposed plant material and obtain the approval of the owner's representative or landscape architect prior to installation.
- 6.) Items shown on this drawing take precedence over the material list. It shall be the landscape contractor's responsibility to verify all quantities and conditions prior to implementation of this plan. No substitutions of types or size of plant materials will be accepted without written approval from the landscape architect.
- 7.) Provide single-stem trees unless otherwise noted in plant schedule.
- 8.) All plant material shall comply with the recommendations and requirements of ANSI Z60.1 "American Standards for Nursery Stock".
- 9.) It shall be the contractor's responsibility to provide for inspection of the plant material by the Landscape Architect prior to acceptance. Plants not conforming exactly to the plant list will not be accepted and shall be replaced at the landscape contractor's expense.
- 10.) All bids are to have unit prices listed. The Owner has the option to delete any portion of the contract prior to signing the contract or beginning work. This will be a unit price contract.

INSURANCE:

- 1.) The landscape contractor shall submit certificates of insurance for workman's compensation and general liability.

MULCH:

- 1.) All mulch to be shredded oak bark mulch at 3" depth (after compaction) unless otherwise noted. Mulch shall be clean and free of all foreign materials, including weeds, mold, deleterious materials, etc.
- 2.) No plastic sheeting or filter fabric shall be placed beneath shredded bark mulch beds. Myrafi fabric shall be used beneath all gravel mulch beds.
- 3.) Edge all beds with spade-cut edge unless otherwise noted.

MAINTENANCE:

- 1.) Landscape Contractor shall provide a separate proposal to maintain all plants, shrubs, groundcover, perennials and annuals for a period of 12 months after acceptance.
- 2.) Contractor shall ensure that only competent and trained personnel shall provide such services and that such services be provided in a timely manner.

TOPSOIL:

- 1.) Topsoil mix for all proposed landscape plantings shall be five (5) parts well-drained screened organic topsoil to one (1) part Canadian sphagnum peat moss as per planting details. Roto-till topsoil mix to a depth of 6" minimum and grade smooth.
- 2.) Provide a soil analysis, as requested, made by an independent soil-testing agency outlining the % of organic matter, inorganic matter, deleterious material, pH and mineral content.
- 3.) Any foreign topsoil used shall be free of roots, stumps, weeds, brush, stones (larger than 1"), litter or any other extraneous or toxic material.
- 4.) Landscape contractor to apply pre-emergent herbicide to all planting beds upon completion of planting operations and before application of shredded bark mulch.

MISC. MATERIAL:

- 1.) Provide stakes and deadmen of sound, new hardwood, free of knotholes and defects.
- 2.) Tree wrap tape shall be 4" minimum, designed to prevent borer damage and winter freezing. Additionally, only 3-ply tying material shall be used.

TURF:

- 1.) All disturbed lawn areas are to be sodded with a high quality Turf Type fescue. Lawn areas shall be unconditionally warranted for a period of 90 days from date of final acceptance. Bare areas more than one square foot per any 50 square feet shall be replaced.
- 2.) No broken pieces, irregular pieces or torn pieces will be accepted.
- 3.) All sod shall be placed a maximum of 24 hours after harvesting.
- 4.) Reconciliation adjacent existing lawn areas damaged by Contractor's operations including equipment/material storage and movement of vehicles.

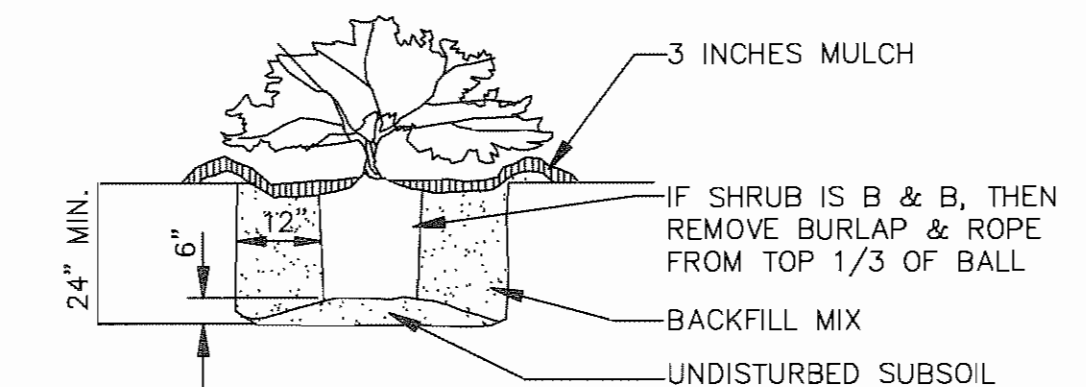
WARRANTY:

- 1.) All plant material (excluding ground cover, perennials and annuals) are to be warranted for a period of 12 months after installation at 100% of the installed price.
- 2.) Any plant material found to be defective shall be removed and replaced within 30 days of notification or in growth season determined to be best for that plant.
- 3.) Only one replacement per tree or shrub shall be required at the end of the warranty period, unless loss is due to failure to comply with warranty.
- 4.) Lawn establishment period will be in effect once the lawn has been mowed three times. Plant establishment period shall commence on the date of acceptance and 100% completion.

PLANT SCHEDULE					
TREES	QTY	COMMON NAME / BOTANICAL NAME	SIZE	MATURE HEIGHT	GROWTH RATE
BC	*DEC 13	Bald Cypress / <i>Taxodium distichum</i>	2.5'Gal	45'	MEDIUM
GRB	*DEC 21	Heritage River Birch / <i>Betula nigra</i> 'Cully'	10'-12'	45' +	FAST
LSM	*DEC	Legacy Sugar Maple / <i>Acer saccharum</i> 'Legacy'	2.5'Gal	45' +	SLOW/MEDIUM
SAW	*DEC 8	Santaolth Oak / <i>Quercus acutissima</i>	2.5'Gal	45' +	MEDIUM
SWO	*DEC 14	Swamp White Oak / <i>Quercus bicolor</i>	2.5'Gal	45' +	MEDIUM
RSM	*DEC 30	Red Sunset Maple / <i>Acer rubrum</i> 'Frankford'	2.5'Gal	45' +	FAST
SHL	*DEC 33	'Skyline' Locust / <i>Gleditsia triacanthos</i> 'Skyline'	2.5'Gal	45' +	FAST
EVERGREEN TREES	QTY	COMMON NAME / BOTANICAL NAME	SIZE	MATURE HEIGHT	GROWTH RATE
BHS	*EV 5	Black Hills Spruce / <i>Picea glauca</i> 'denata'	6'-7'	30'-40'	MEDIUM
EMARB	*EV 10	Emerald Arborvitae / <i>Thuja occidentalis</i> 'Emerald'	9'-6"	30'-40'	MEDIUM
GSAA	*EV 11	Green Giant Arborvitae / <i>Thuja plicata</i> 'Green Giant'	9'-6"	45' +	MEDIUM
FLOWERING TREES	QTY	COMMON NAME / BOTANICAL NAME	SIZE	MATURE HEIGHT	GROWTH RATE
RB	*DEC 14	Redbud / <i>Cercis canadensis</i>	2.5'Gal	25'-30'	FAST
SBBS	*DEC 24	Shadblow Serviceberry / <i>Amelanchier canadensis</i> (Single Stem Only)	2.5'Gal	25'-30'	SLOW/MEDIUM
JNSM	*EV 18	Sweetbay Magnolia / <i>Magnolia virginiana</i> 'Jim Nilson'	2.5'Gal	15'-20'	MEDIUM
TCH	*DEC 15	Thornless Cockspur Hawthorn / <i>Crataegus crugellii</i> var. <i>inermis</i>	2.5'Gal	15'-20'	MEDIUM
SHRUBS	QTY	COMMON NAME / BOTANICAL NAME	SIZE		
RTD	*DEC 117	Bailey's Red-Twig Dogwood / <i>Cornus sericea</i> 'Cardinal'	9 gal		
CDM	*DEC 101	Cherry Dazzle Myrtle / <i>Lagerstraeamia</i> 'SAMAD I'	9 gal		
CLA	*DEC 51	Chicago Lustre Arranwood / <i>Viburnum dentatum</i> 'Chicago Lustre'	24"-30"		
INK	*EV 41	Compact Inkberry / <i>Ilex glabra</i> 'Compacta'	9 gal		
YAJIN	*EV 63	Compact Youngtown Anemone Juniper / <i>Juniperus horizontalis</i> 'Youngtown'	9 gal		
NIN	*DEC 48	Diabolo Purple Ninebark / <i>Physocarpus opulifolius</i> 'Diabolo' TM	9 gal		
FIHYD	*DEC 44	Fire & Ice Hydrangea / <i>Hydrangea paniculata</i> 'Wim's Red'	9 gal		
SVB	*EV 201	Green Velvet Boxwood / <i>Buxus</i> 'Green Velvet'	9 gal		
GLFS	*DEC 62	Gro-Low Fragrant Sumac / <i>Rhus aromatica</i> 'Gro-Low'	9 gal		
LDN	*DEC 4	Little Devil Ninebark / <i>Physocarpus opulifolius</i> 'Donna May'	9 gal		
IT	*DEC 47	Little Henry Sweetgum / <i>Itsea virginica</i> 'Little Henry'	9 gal		
MIB	*EV 91	Morris Midget Boxwood / <i>Buxus microphylla</i> 'Morris Midget'	9 gal		
NJT	*DEC 207	New Jersey Tea / <i>Ceanothus americanus</i>	9 gal		
BAY	*EV 145	Northern Bayberry / <i>Myrica pensylvanica</i>	24"-30"		
OHYD	*DEC 177	Oakleaf Hydrangea / <i>Hydrangea quercifolia</i>	9 gal		
WH	*DEC 148	Red Sprite Winterberry / <i>Ilex verticillata</i> 'Red Sprite'	9 gal		
RCOT	*DEC 14	Rock Coteoneaster / <i>Cotoneaster horizontalis</i>	9 gal		
RSC	*DEC 146	Ruby Spice Clethra / <i>Clethra alnifolia</i> 'Ruby Spice'	9 gal		
WNB	*EV 75	Winter Gem Boxwood / <i>Buxus microphylla</i> 'Winter Gem'	9 gal		
GLE	*DEC 76	'Hummingbird' Summersweet / <i>Clethra alnifolia</i> 'Hummingbird'	9 gal		
ANNUALS/PERENNIALS	QTY	COMMON NAME / BOTANICAL NAME	SIZE		
JFB	*DEC 8	Bartered Bride Joe-Pye Weed / <i>Eupatorium maculatum</i> 'Bartered Bride'	2 gal		
CAR	*DEC 102	Cardinal Flower / <i>Lobelia cardinalis</i>	1 gal		
HIB LUN	*DEC 94	Dwarf Hydrangea / <i>Hibiscus moscheutos</i> 'Luna Pink Swirl'	9 gal		
BES	*DEC 2370	Goldsturm Black-eyed Susan / <i>Rudbeckia fulgida</i> 'Goldsturm'	1 gal		
HRD	*DEC 260	Happy Returns Daylily / <i>Hemerocallis</i> hybrid 'Happy Returns'	1 gal		
JL	*DEC 26	Japanese Iris / <i>Iris ensata</i>	5 gal		
MN-SAL	*DEC 138	May Night Salvia / <i>Salvia nemorosa</i> 'May Night'	1 gal		
PCL	*DEC 78	Pink Chablis Lamium / <i>Lamium maculatum</i> 'Pink Chablis'	1 gal		
PC-M	*DEC 228	Purple Coneflower / <i>Echinacea purpurea</i> 'Magnus'	1 gal		
PC-KKH	*DEC 228	Purple Coneflower / <i>Echinacea purpurea</i> 'Kim's Knee High' TM	1 gal		
RS	*DEC 82	Russian Sage / <i>Perovskia atriplicifolia</i>	1 gal		
SOP	*DEC 150	Stella de Oro Daylily / <i>Hemerocallis</i> hybrid 'Stella de Oro'	1 gal		
VI	*DEC 87	Variegated Iris / <i>Iris pallida</i> 'Variegata'	1 gal		
YAR	*DEC 121	Yarrow / <i>Achillea filipendula</i> 'Coronation Gold'	1 gal		
FORBS	QTY	COMMON NAME / BOTANICAL NAME	SIZE		
MFL	*DEC 1438	Monkeyflower / <i>Mimulus ringens</i>	2 qt		
FND	*DEC 1448	Pickering Nettle / <i>Pontederia cordata</i>	2 qt		
RMAL	*DEC 1404	Rose Mallow / <i>Hibiscus moscheutos</i>	2 qt		
SMN	*DEC 224	Swamp Milkweed / <i>Asclepias incarnata</i>	2 qt		
WC	*DEC 644	Wild Carna / <i>Thalia dealbata</i>	2 qt		
GRASSES	QTY	COMMON NAME / BOTANICAL NAME	SIZE		
JFW	*DEC 23	Dwarf Fountain Grass / <i>Femisetum alopecuroides</i> 'Hamel'	5 gal		
DMG	*DEC 46	Dwarf Maiden Grass / <i>Miscanthus sinensis</i> 'Yakushima'	5 gal		
CALA	*DEC 140	Foerster's Reed Grass / <i>Calamagrostis acutifolia</i> 'Karl Foerster'	5 gal		
MLMG	*DEC 117	Morning Light Maiden Grass / <i>Miscanthus sinensis</i> 'Morning Light'	5 gal		
ROSES	QTY	COMMON NAME / BOTANICAL NAME	SIZE		
KR	*DEC 85	Knockout Rose / <i>Rosa</i> 'Knockout'	5 gal		
VINES	QTY	COMMON NAME / BOTANICAL NAME	SIZE		
EIVY	*EV 33	English Ivy / <i>Hedera helix</i>	1 gal		
GROUND COVERS	QTY	COMMON NAME / BOTANICAL NAME	SIZE		
CGP	222 sf	Cotton Candy Creeping Phlox / <i>Phlox subulata</i> 'Cotton Candy'	1 qt @ 12" oc		
LEG	2,854 sf	Variegated Liriope / <i>Liriope muscari</i> 'Variegata'	2 qt @ 12" oc		
NATIVE GRASSES	QTY	COMMON NAME / BOTANICAL NAME	SIZE		
FS	6,482 sf	Fringed Sedge / <i>Carex crinita</i>	1 plug @ 18" oc		
FS	2,467 sf	Golden Poxtail Grass / <i>Alopecurus pratensis</i> 'Aureovariegatus'	2 qt @ 12" oc		
LEG	1,436 sf	Little Bluestem Grass / <i>Schizachyrium scoparium</i>	1 plug @ 18" oc		
FS	5,924 sf	Morning Star Sedge / <i>Carex grayi</i>	1 plug @ 18" oc		
FS	4,806 sf	Soft Rush / <i>Juncus effusus</i>	1 plug @ 18" oc		

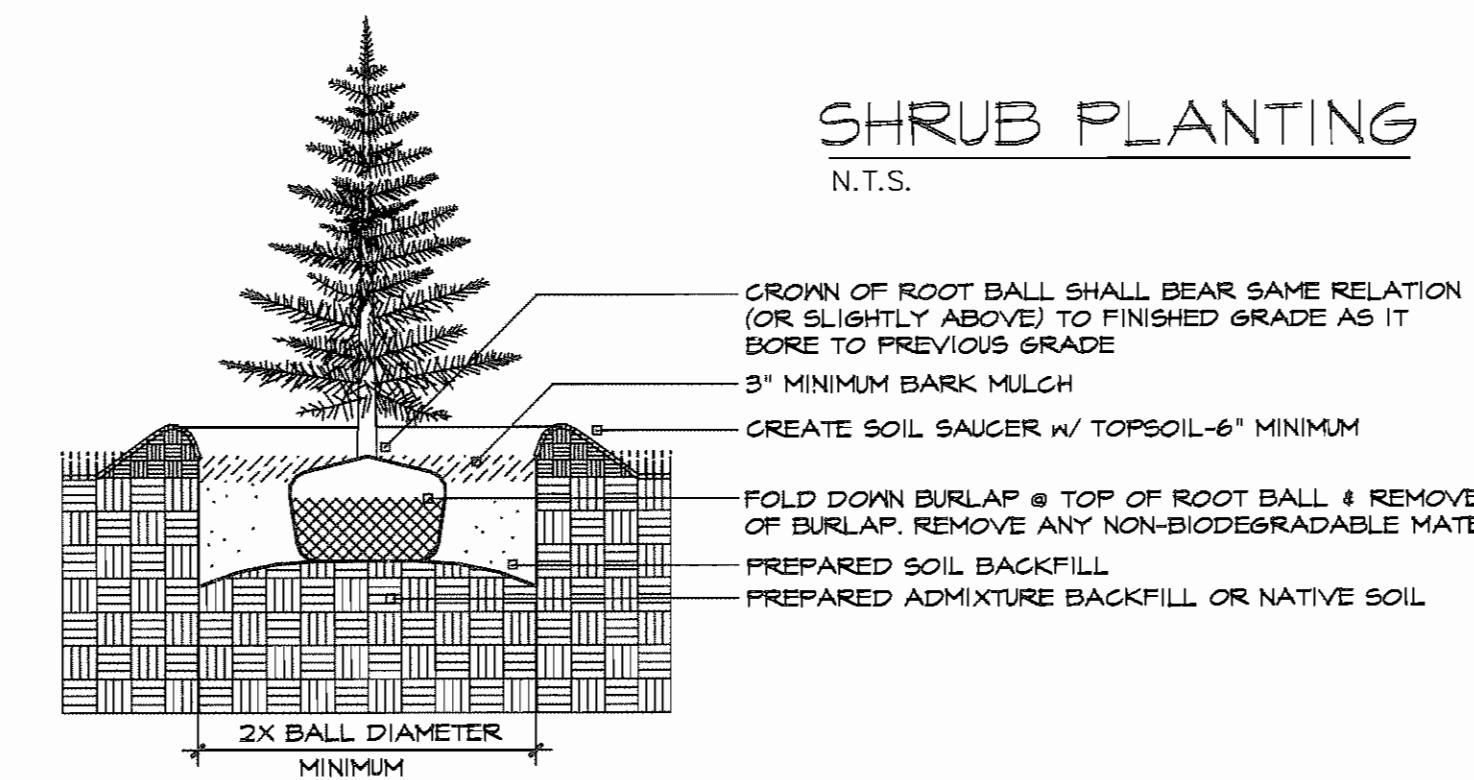
PLEASE NOTE: ALL PARKING LOT ISLANDS ARE TO BE MULCHED W/ A MINIMUM 3" DEPTH OF SHREDDED OAK BARK MULCH

*DEC = deciduous plant material
*EV = evergreen plant material



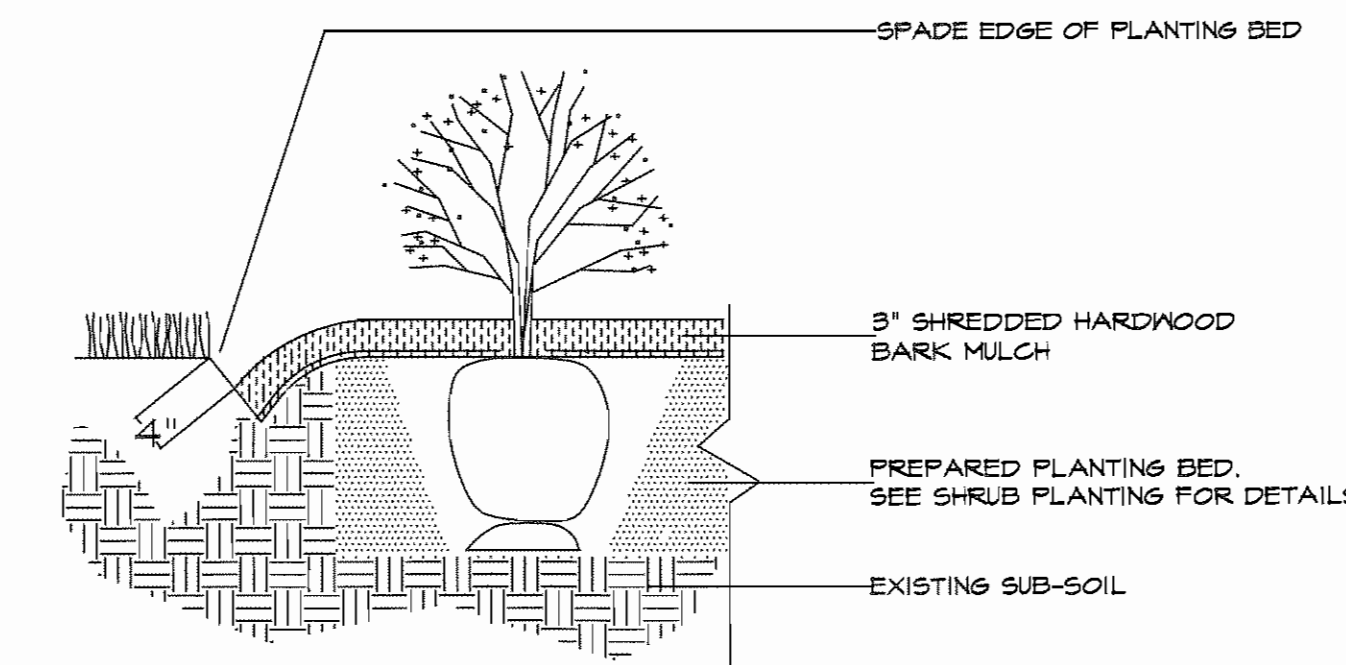
SHRUB PLANTING

N.T.S.



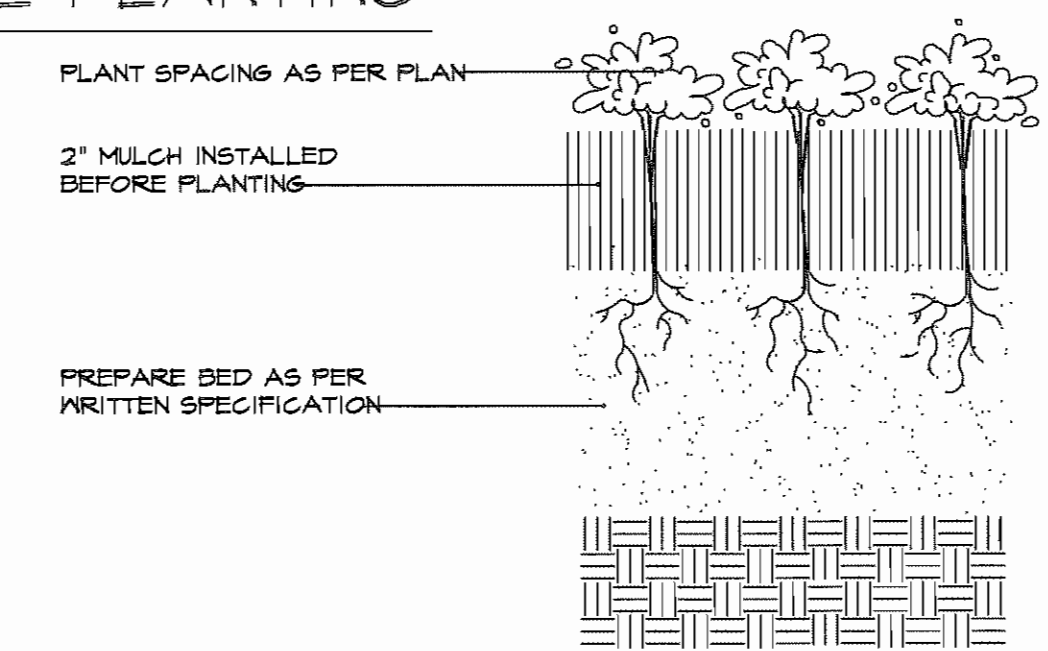
EVERGREEN TREE PLANTING

N.T.S.



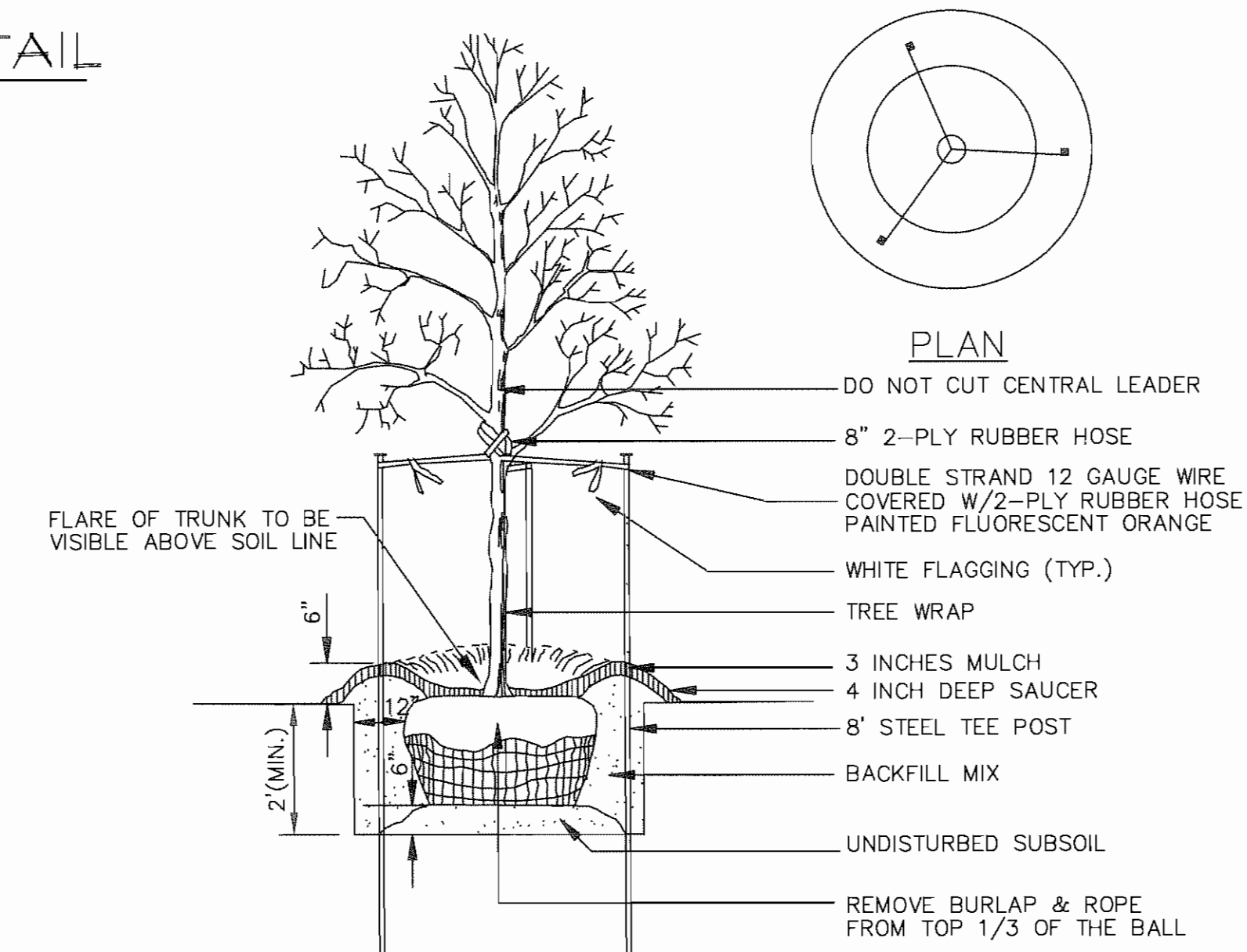
SPADE-CUT EDGE DETAIL

N.T.S.



PERENNIAL / ANNUAL PLANTING

N.T.S.

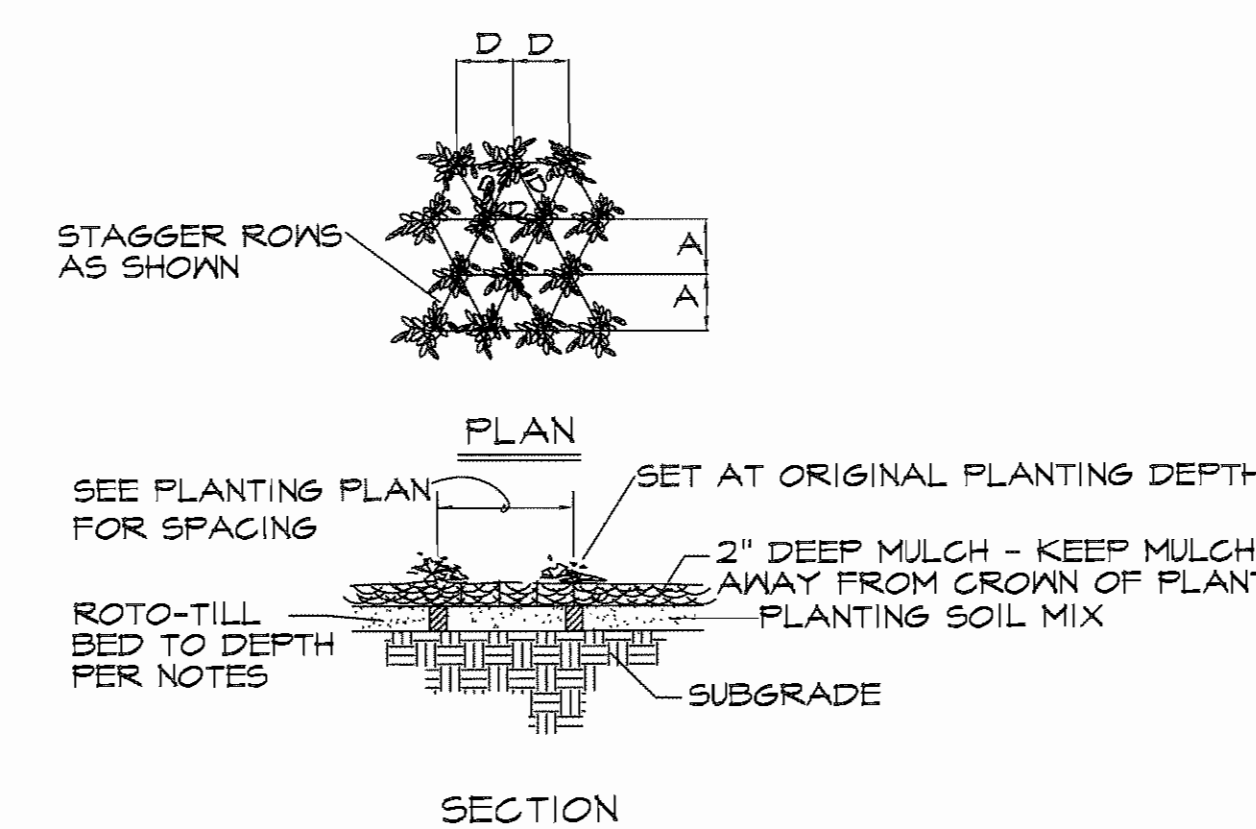


NOTE: USE SHREDDED BARK MULCH ONLY

DECIDUOUS TREE PLANTING

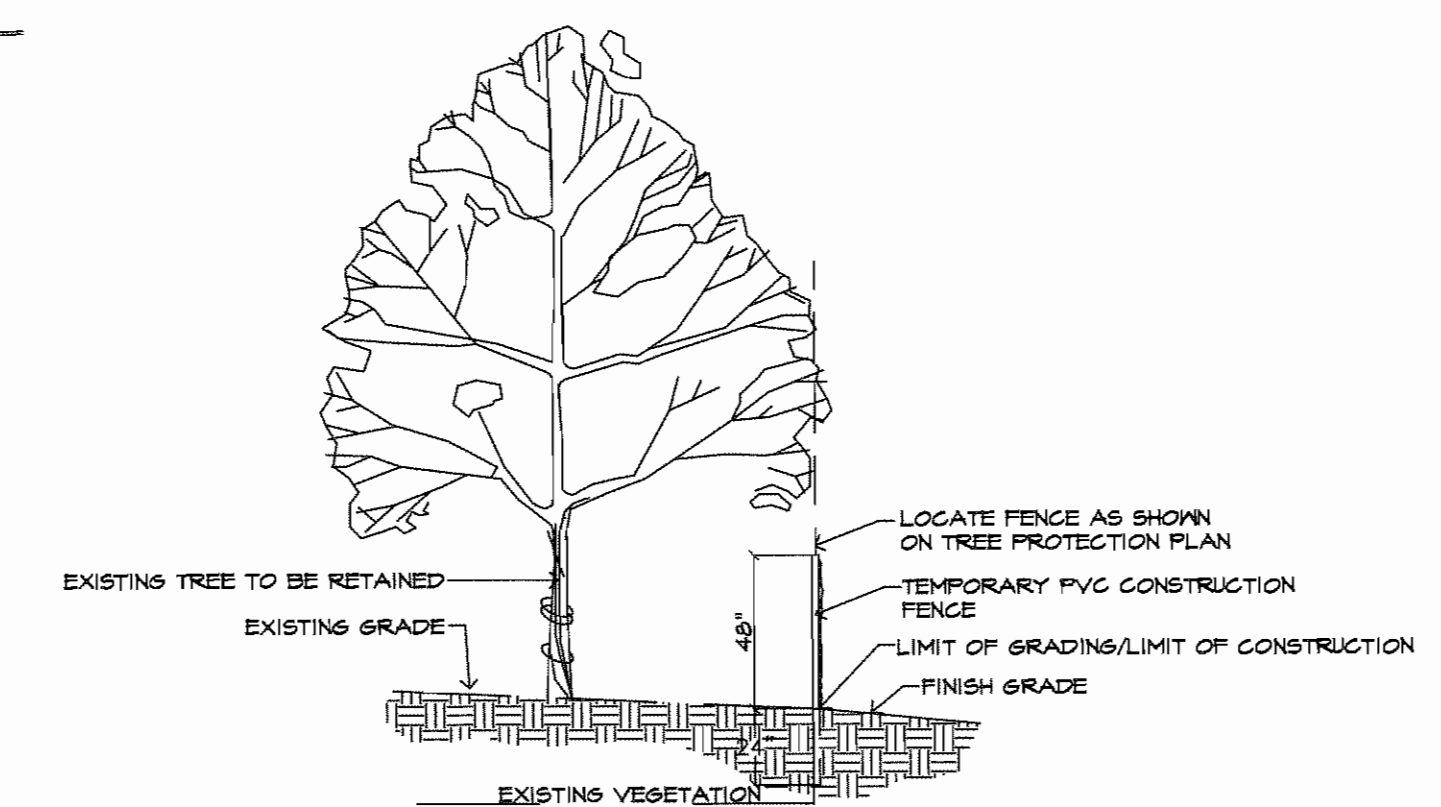
N.T.S.

SPACING 'D'	ROW 'A'	# OF PLANTS PER SQ. FT.
30"	26"	0.16
24"	20.8"	0.25
18"	15.6"	0.45
15"	13"	0.64
12"	10.4"	1.00
10"	8.66"	1.44
8"	6.93"	2.25



FORB/GRASS PLANTING DETAIL

N.T.S.



TREE PROTECTION DETAIL

N.T.S.

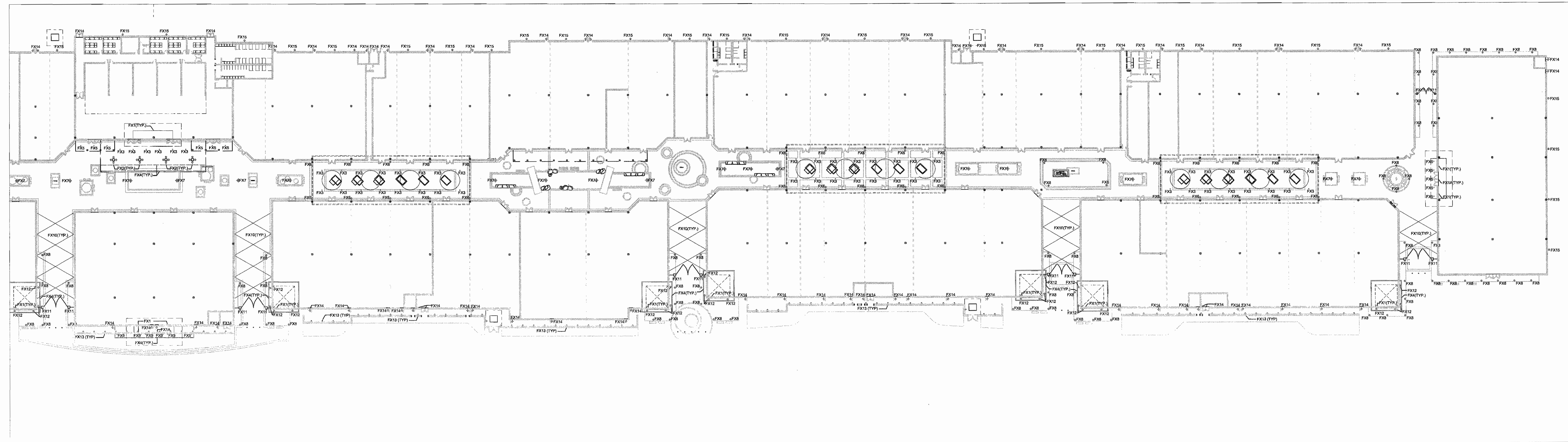
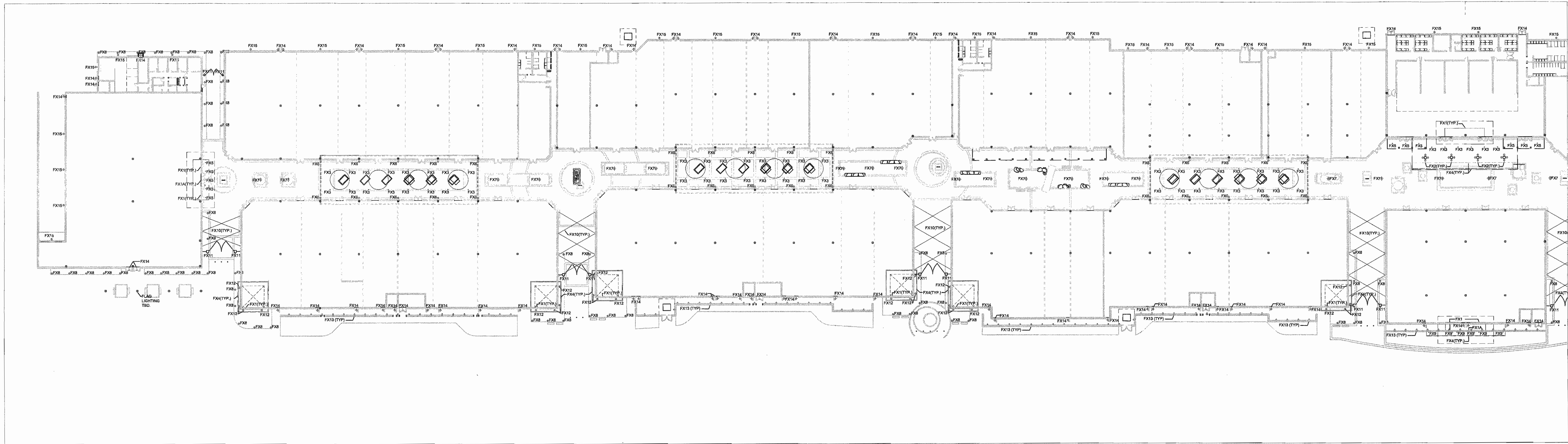
REVISIONS	BY
2/15/12	RMM

landscape TECHNOLOGIES
 67 Jacobs Creek Drive
 St. Charles, Missouri 63304
 Phone: (636) 925-1250
 Fax: (636) 925-4693
 MO Landscape Architectural Corporation #200009182

REGISTERED
 MISSOURI LANDSCAPE ARCHITECT #000018
 RANDY L. WARDIS
 MISSOURI LANDSCAPE ARCHITECT #28304
 DATE: 7/18/12

DETAILS, NOTES & SCHEDULE FOR THE PROPOSED
Chesterfield Outlets
 CHESTERFIELD, MISSOURI

DRAWN
R. MARDIS
 CHECKED
RMM/SJB
 DATE
2/15/12
 SCALE
N.A.
 JOB NO.
2011-164
 SHEET
L-6
 OF SIX SHEETS



A OVERALL PLAN
SCALE: 1" = 40'-0"

DESIGN COLLECTIVE, INC. ALL RIGHTS RESERVED
 ISSUED FOR: City Submission DATE: 02-15-12

CONSULTANT
ldc
 Lighting Design Collaborative
 27 West 24th Street, Suite 507, New York, NY 10011 P: 212-945-0540
 1210 Ross Street, Suite 301, Philadelphia, PA 19107 P: 215-693-2119
 200 Haddonfield Avenue, Egg Harbor City, NJ 08215 P: 856-523-2862

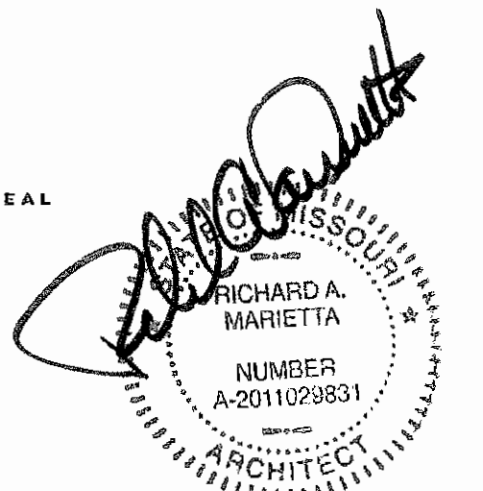
OWNER / DEVELOPER
T-O Ventures LLC

200 East Long Lake Road Suite 300
 Bloomfield Hills, MI
 48304-2324

PROJECT NAME
Chesterfield Outlets

PROJECT ADDRESS
 ### N Outer 40
 Chesterfield, MO 63005

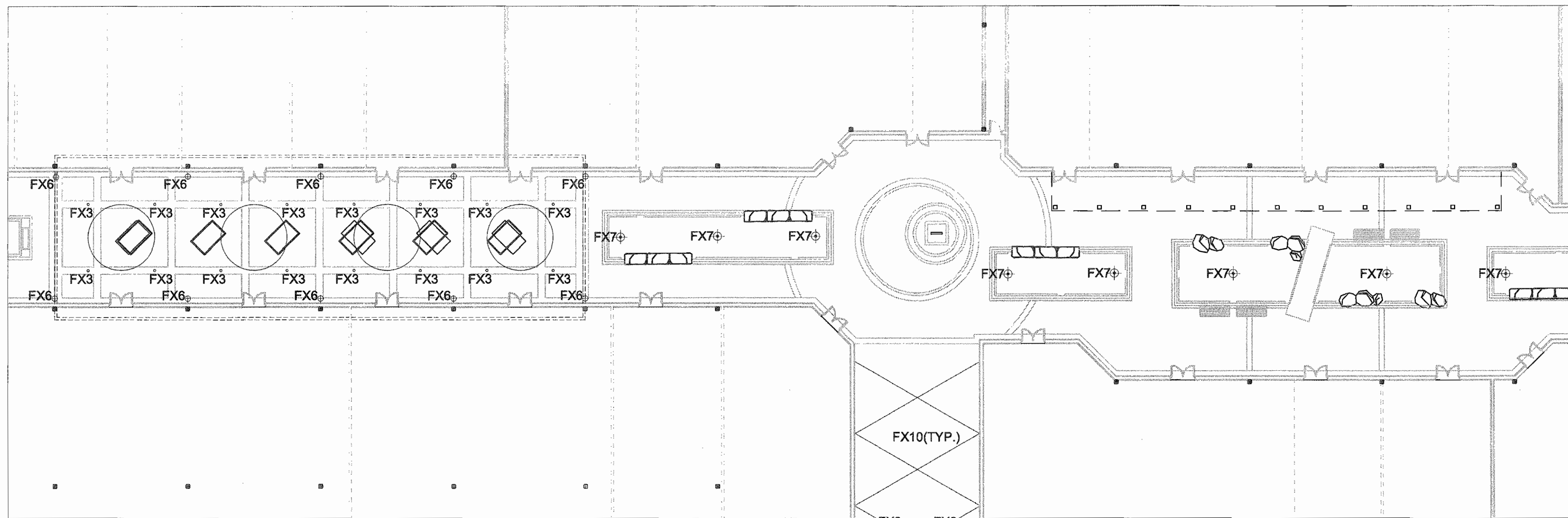
PROJECT MANAGEMENT
 DCI Project No. 647-11
 Owner Project No.
 Drawn By: Author Checked By: Checke



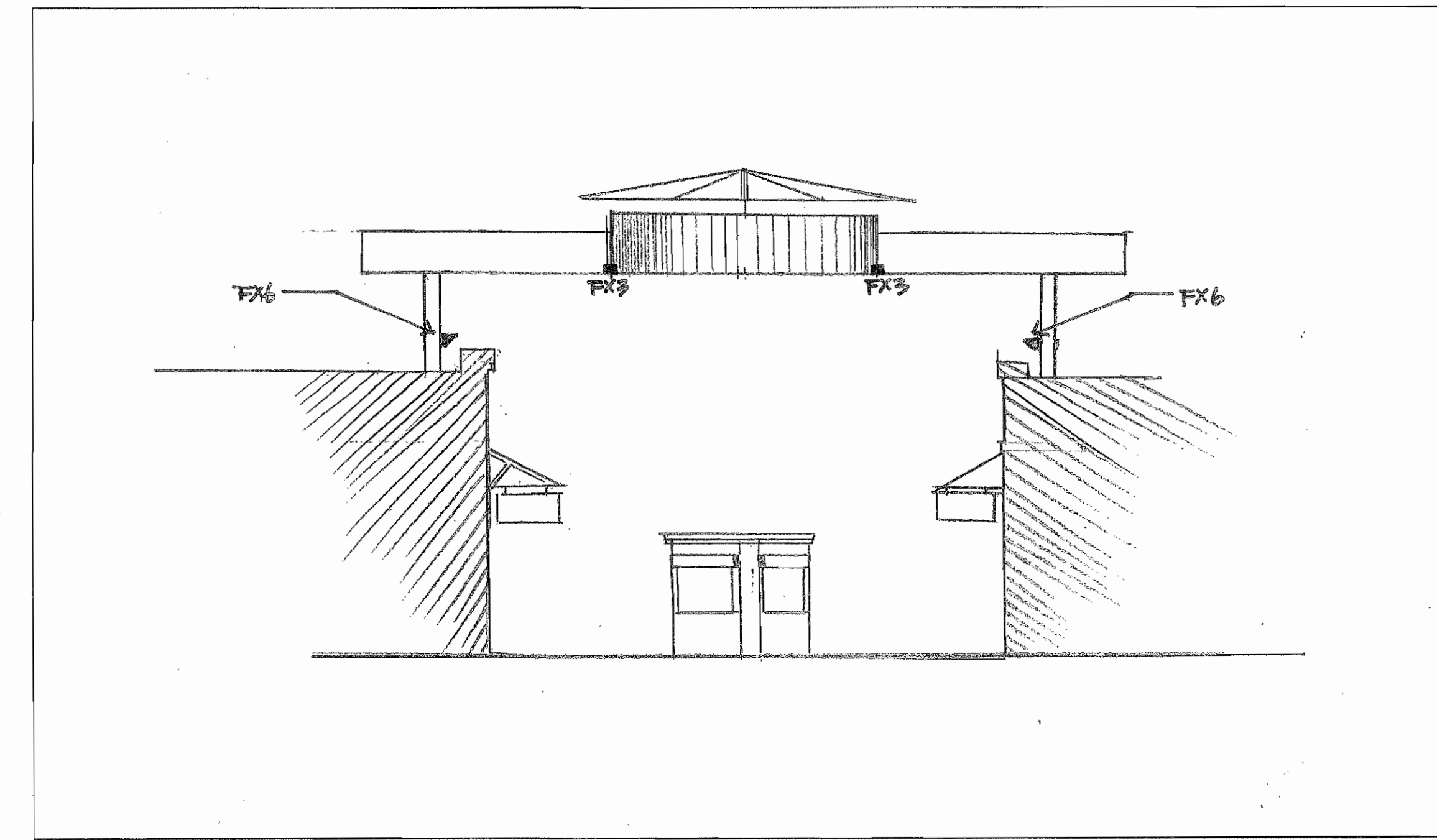
SHEET TITLE
Overall Lighting Plan

SCALE
 SHEET NUMBER

LT-01



A ENLARGED PLAN
SCALE: 1" = 20'-0"



B SECTION AT SKYLIGHT CANOPY
SCALE: 1/8" = 1'-0"

FEATURES

OPTICAL SYSTEM

- Solid-state, semi-circular, or multi-effuse anodized laser reflector. Optically designed to provide 40° cutoff for optimal efficiency and glare control.
- Interchangeable glass reflectors provide narrow, medium and wide distributions. These glass distribution patterns allow designers to achieve various design objectives.
- 100% task lighting with adjustable beam rotation and assures maximum efficiency. Provides required protective shielding.
- Optical system retained by self-aligning tension support springs.

MECHANICAL SYSTEM

- Black anodized housing features tool-less access and accommodates a maximum 1.5" ceiling thickness.
- Tool-less tension capability from above or below ceiling.
- 18-gauge galvanized steel mounting bar with continuous 4" wide adjustment slots. These glass distribution patterns allow installation adjustment possible without the use of tools from above or below ceiling.
- Galvanized steel junction box with integral access covers and spring latch. These components are 1/2" deep and 1/2" wide for an easy through-hole mount. Capacity: 60 W, 600V AC, 12.5Amps continuous rating for 100°C.
- Secondary housing adjustment system for precise, final ceiling surface adjustment.

ELECTRICAL SYSTEM

- Tool-less access door provides access to junction box and located through the canopy.
- 0.15, 0.3 or 0.6A base circuit breaker.
- Pre-wired, electronic, 10 or 277V ballast module is standard. Assembly may be disassembled before or after mounting of electrical fixture.
- Normally open voltage sensitive detector.
- 20' cable length standard.

LISTING

• Fixture are UL Listed for 120V branch wiring. Non-UL listed wiring and other locations. Listed and labeled to comply with Canadian Standards.

ORDERING INFORMATION

Example: ATH T4T 200MC 4M N LD 120

Series	Lamp Type	Lamp Wattage	Aperture/Fix Color	Finish	Voltage	Ballast	Options
ATH	T4T	200MC	4M	Clear	120	Electronic	None
ATH	T4T	200MC	4M	Black	120	Electronic	None
ATH	T4T	200MC	4M	Clear	277	Electronic	None
ATH	T4T	200MC	4M	Black	277	Electronic	None

NOTES

1. Refer to the "Notes" section on page 10 of the ATH T4T 200MC 4M N LD 120 spec.
2. Available with electronic ballast only.
3. Available with 277V electronic ballast only.
4. Available with 277V electronic ballast only.
5. For complete fixture specifications, refer to "Technical Specifications" on page 10 of the ATH T4T 200MC 4M N LD 120 spec.

goham

1000 ARCHITECTURAL ILLUMINATION
1401 West 10th Street, Suite 100
PHOENIX, AZ 85007
PH: 602.998.1111 FAX: 602.998.1112
WWW.GOHAM.COM

D FX3

VAS[®]
QUARTZ HALOGEN / CERAMIC METAL HALIDE / COMPACT FLUORESCENT

OPTICAL SYSTEM

MECHANICAL SYSTEM

ELECTRICAL SYSTEM

LISTING

ORDERING INFORMATION

Series	Lamp Type	Lamp Wattage	Aperture/Fix Color	Finish	Voltage	Ballast	Options
VAS	MR16	35W	Clear	Clear	120	Electronic	None
VAS	MR16	35W	Clear	Black	120	Electronic	None
VAS	MR16	35W	Clear	Clear	277	Electronic	None
VAS	MR16	35W	Clear	Black	277	Electronic	None

www.insightlighting.com

E FX6

Quadrolisk **seflux**

Project: _____ **Qty:** _____

Series **Optics** **Height** **Lamping** **Finish** **Voltage** **Options**

Series	Optics	Height	Lamping	Finish	Voltage	Options
QDL	MA	12	13	14	15	16
QDL	MB	12	13	14	15	16
QDL	MC	12	13	14	15	16
QDL	MD	12	13	14	15	16
QDL	ME	12	13	14	15	16
QDL	MF	12	13	14	15	16
QDL	MG	12	13	14	15	16
QDL	MH	12	13	14	15	16
QDL	MI	12	13	14	15	16
QDL	MJ	12	13	14	15	16
QDL	MK	12	13	14	15	16
QDL	ML	12	13	14	15	16
QDL	MM	12	13	14	15	16
QDL	MN	12	13	14	15	16
QDL	MO	12	13	14	15	16
QDL	MP	12	13	14	15	16
QDL	MQ	12	13	14	15	16
QDL	MR	12	13	14	15	16
QDL	MS	12	13	14	15	16
QDL	MT	12	13	14	15	16
QDL	MU	12	13	14	15	16
QDL	MV	12	13	14	15	16
QDL	MW	12	13	14	15	16
QDL	MX	12	13	14	15	16
QDL	MY	12	13	14	15	16
QDL	MZ	12	13	14	15	16

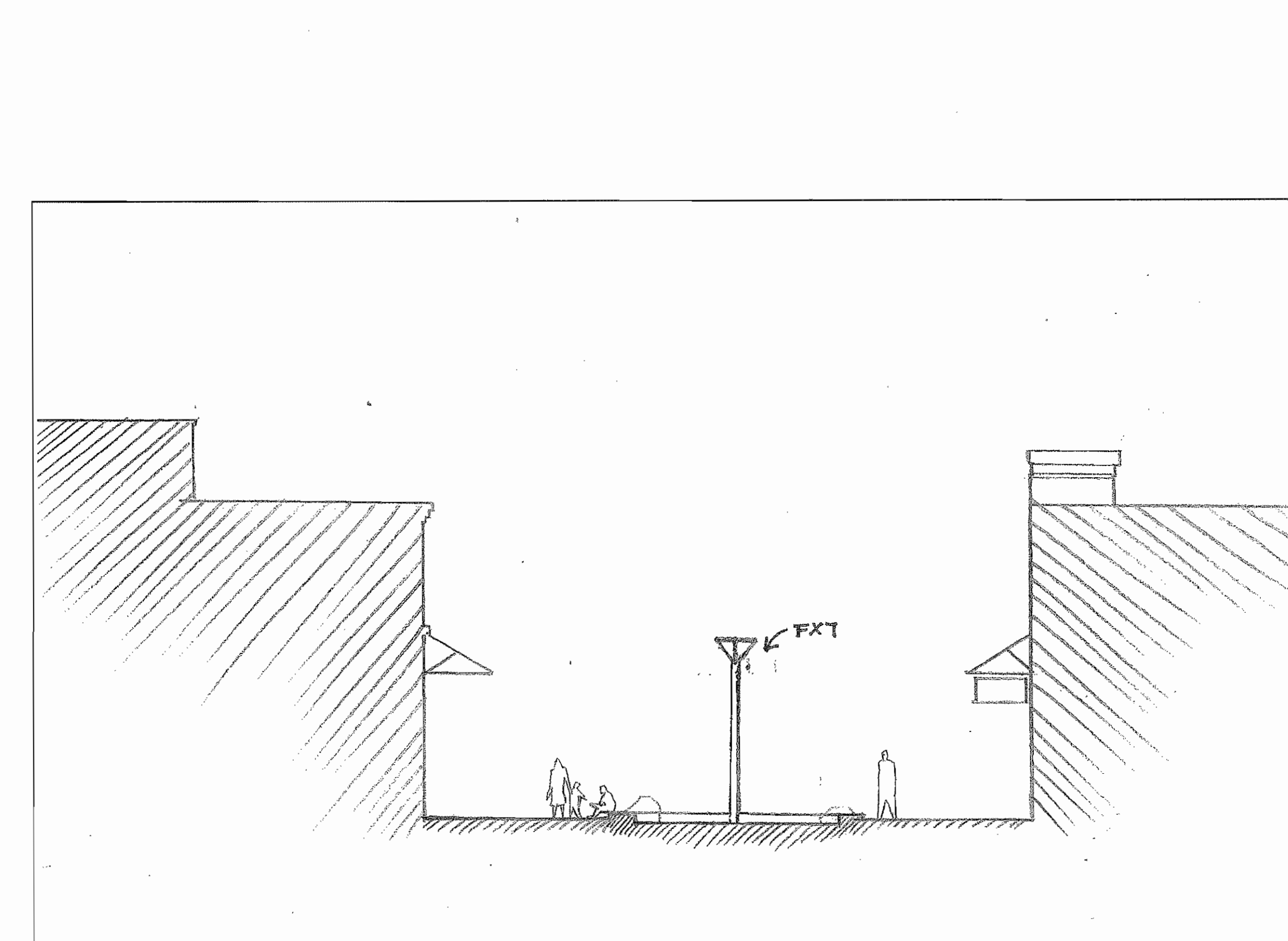
NOTES

1. Fixture Cover - Formed aluminum cover with visible gasketed interior for maximum visibility. Removable for cleaning. Refer to the "Notes" section on page 10 of the Quadrolisk spec sheet for more information.
2. Gasketing - Continuous gasketing around the perimeter of the fixture cover to ensure airtight seal. Refer to the "Notes" section on page 10 of the Quadrolisk spec sheet for more information.
3. Frame Ring - Formed aluminum frame ring with visible gasketed interior for maximum visibility. Removable for cleaning. Refer to the "Notes" section on page 10 of the Quadrolisk spec sheet for more information.
4. Fixture Frame/Pole - Four formed aluminum poles with steel connecting rings form a sturdy frame. Refer to the "Notes" section on page 10 of the Quadrolisk spec sheet for more information.
5. Gable - Vacuum-formed, one-piece clear polycarbonate. Refer to the "Notes" section on page 10 of the Quadrolisk spec sheet for more information.
6. Optics - Select Type II or Type III optics. Optics are pressure cast aluminum. Type II optics are available in 10° or 20° beam spread. Type III optics are available in 10°, 20°, or 30° beam spread. Refer to the "Notes" section on page 10 of the Quadrolisk spec sheet for more information.
7. Lamps - Select one of the listed lamp options. Refer to the "Notes" section on page 10 of the Quadrolisk spec sheet for more information.
8. Electrical - Refer to the "Notes" section on page 10 of the Quadrolisk spec sheet for more information.

SEFLUX

1000 ARCHITECTURAL ILLUMINATION
1401 West 10th Street, Suite 100
PHOENIX, AZ 85007
PH: 602.998.1111 FAX: 602.998.1112
WWW.SEFLUX.COM

F FX7



C SECTION AT PLANTER
SCALE: 1/8" = 1'-0"

DESIGN COLLECTIVE

ARCHITECTURE, PLANNING, INTERIORS
WWW.DESIGNCOLLECTIVE.COM

601 EAST PRATT STREET, SUITE 300
BALTIMORE, MARYLAND 21202
T: 410.685.6655 F: 410.539.6242

312 BLACKWELL STREET, SUITE 100
DURHAM, NORTH CAROLINA 27701
T: 919.384.9322 F: 919.384.9323

DESIGN COLLECTIVE, INC. ALL RIGHTS RESERVED
ISSUED FOR: _____ DATE: _____
City Submission 02-15-12

CONSULTANT
ldc
Interior Design Collaborative
27 West 24th Street, Suite 507 New York, NY 10011 p 212.846.0500
1215 Arch Street, Suite 3A Philadelphia, PA 19107 p 215.582.2116
209 Philadelphia Avenue Egg Harbor City, NJ 08215 p 888.223.2862

OWNER / DEVELOPER
T-O Ventures LLC

200 East Long Lake Road Suite 300
Bloomfield Hills, MI
48304-2324

PROJECT NAME
Chesterfield Outlets

PROJECT ADDRESS
N Outer 40
Chesterfield, MO 63005

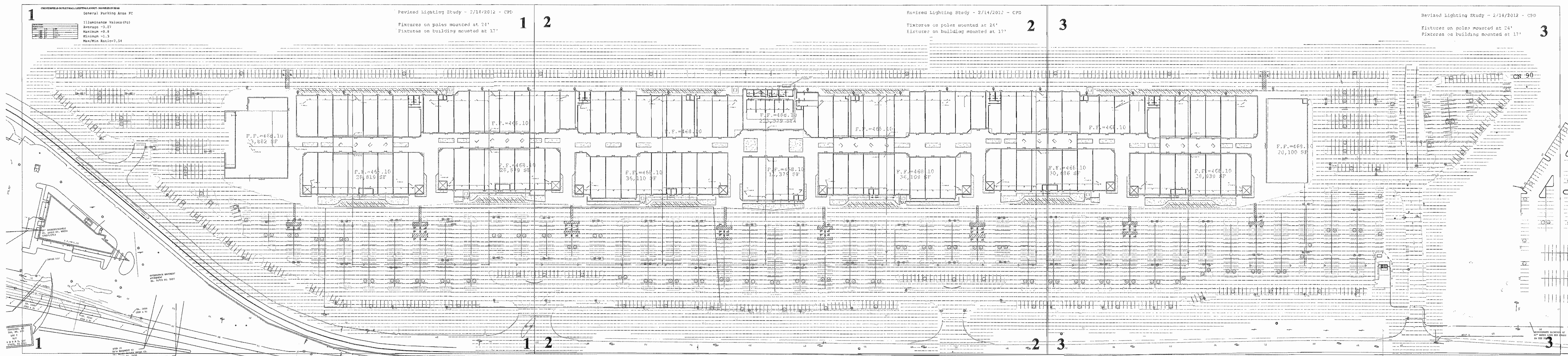
PROJECT MANAGEMENT
DCI Project No. 647-11
Owner Project No.
Drawn By: Author Checked By: Checke

SEAL
RICHARD A. MARIETTA
ARCHITECT
NUMBER A-2011025831

SHEET TITLE
Lighting at Typical Concourse

SCALE
SHEET NUMBER

LT-03



CHESTERFIELD OUTLET MALL LIGHTING LAYOUT - NO POLES IN REAR

General Parking Area FC

Illuminance Values (Fc)

Average = 3.27

Maximum = 9.8

Minimum = 1.3

Max/Min Ratio = 7.54

Luminaire Schedule		
Project: All Projects		
Symbol	Qty	Label
	4	C12-T2
	33	C12-T3
	56	(2)C12-T4
	21	Wall 1

DESIGN COLLECTIVE, INC. ALL RIGHTS RESERVED

ISSUED FOR	DATE
CITY SUBMISSION	2-15-2012

CONSULTANT

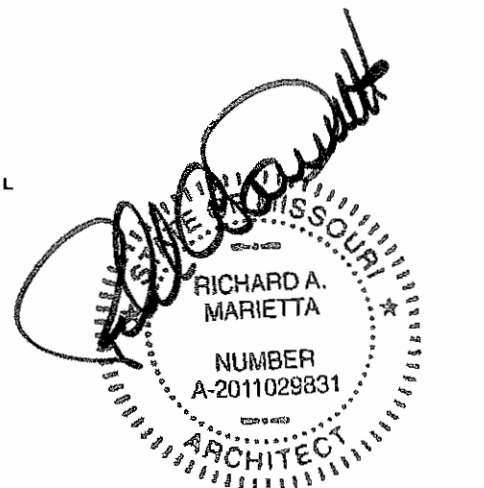
OWNER/DEVELOPER
T-O Ventures LLC

200 East Long Lake Road Suite 300
Bloomfield Hills, MI
48304-2324

PROJECT NAME
Chesterfield Outlets

PROJECT ADDRESS
N Outer 40
Chesterfield, MO 63005

PROJECT MANAGEMENT
DCI Project No. 647-11
Owner Project No.
Drawn By: Author Checked By: Checker



SHEET TITLE
SITE LIGHTING

SCALE

SHEET NUMBER
LS-01

