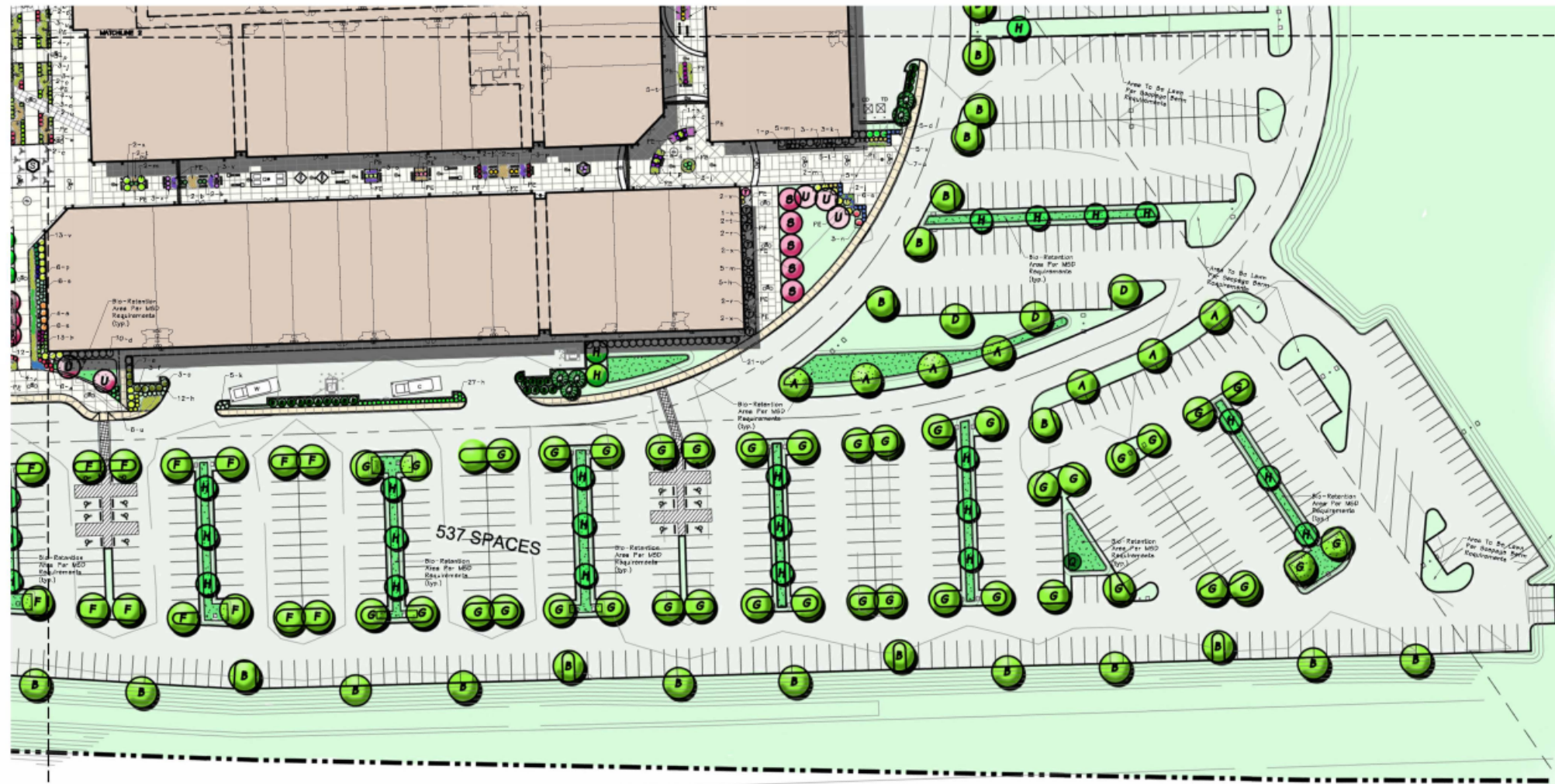


NORTHEAST LANDSCAPE PLAN



LANDSCAPE PLAN N.E. QUAD
SCALE 1" = 30'

222 National Ave.
St. Louis, MO 63103
314.242.7400 ext. 400
www.collaborativeinc.com
info@collaborativeinc.com



ARCHITECTS
LANDSCAPE ARCHITECTS
INTERIOR DESIGNERS
PLANNERS
CONTRACT FURNISHERS



Plan prepared by:
Anomix Associates
Landscape Architecture
Interior Design
Planning
Contract Furnishing



PROJECT TITLE
ST. LOUIS
PREMIUM
OUTLETS

Chesterfield, MO

CHECKED JAS
APPROVED BMR

SHEET TITLE
NORTHEAST
LANDSCAPE
PLAN

SHEET NO.
L-4

ST. LOUIS PREMIUM OUTLETS
ARCHITECTURAL REVIEW BOARD

PREMIUM
OUTLETS
SIMON

WOODMONT
OUTLETS

the COLLABORATIVE inc
ARCHITECTS | LANDSCAPE ARCHITECTS | INTERIOR DESIGNERS | PLANNERS



LANDSCAPE PLAN N.W. QUAD
SCALE 1" = 30'

222 National Ave.
Tulsa, OK 74103
418.242.7400 ext. 441
418.242.7400 fax
www.thecollaborative.com
info@thecollaborative.com



PROJECTS
LANDSCAPE ARCHITECTS
INTERIOR DESIGNERS
PLANNERS
CONTRACT FINISHERS



Plan prepared by:
Kooma/Associates
Landscape Architecture
Interior Design
Planning
Contract Finishing



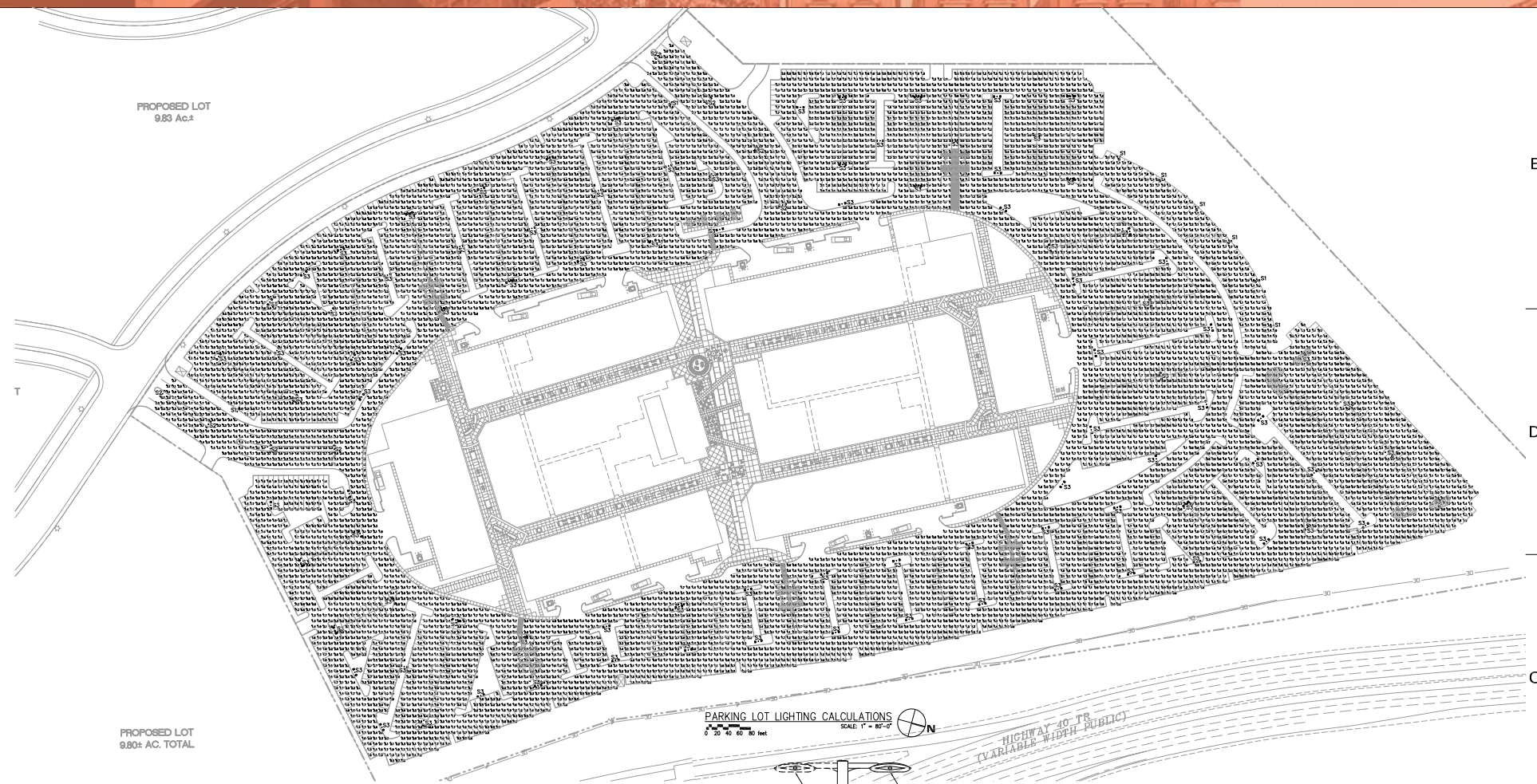
PROJECT TITLE
ST. LOUIS
PREMIUM
OUTLETS

Chesterfield, MO

CHECKED JAS
APPROVED BAR

SHEET TITLE
NORTHWEST
LANDSCAPE
PLAN

SHEET NO.
L-5



FIXTURE TYPES 'S1' & 'S2'

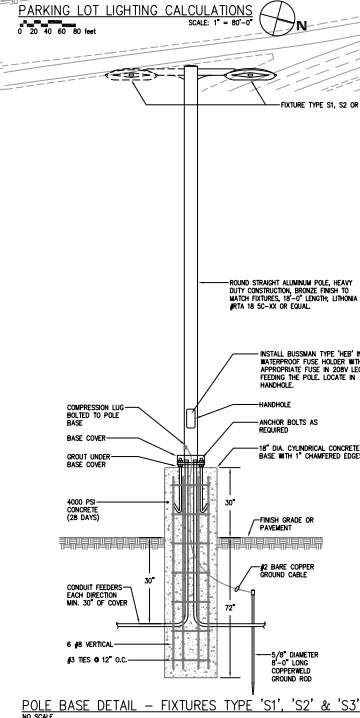
ARE-EDG-SH-DL THE EIGE® LED AreaLight - Type II Medium

ARE-EDG-SH-DL THE EIGE® LED AreaLight - Type VMedium

Symbol	Label	Qty	Category Number	Description	Lamp	File	Lumens	LLF	Watts
S1	S1	8	ARE-EDG-SH-DL-12-D-L-L-E-350	120 LED TYPE II MEDIUM EDGE 3000A	ONE HUNDRED TWENTY WHITE LIGHT EMITTING DIODES (LED) -12-C-U-L-350-60K-M	ARE-EDG-SH-DL-12-D-L-L-E-350	Absolute 1,000	1.00	139
S2	S2	8	ARE-EDG-SH-DL-12-D-L-L-E-350	120 LED TYPE II MEDIUM EDGE 3000A	ONE HUNDRED TWENTY WHITE LIGHT EMITTING DIODES (LED) -12-C-U-L-350-60K-M	ARE-EDG-SH-DL-12-D-L-L-E-350	Absolute 1,000	1.00	278
S3	S3	83	ARE-EDG-SH-DL-12-D-L-L-E-350	120 LED TYPE V MEDIUM EDGE 3000A	ONE HUNDRED TWENTY WHITE LIGHT EMITTING DIODES (LED) -12-C-U-L-350-60K-M	ARE-EDG-SH-DL-12-D-L-L-E-350	Absolute 1,000	1.00	278

STATISTICS

Description	Symbol	Avg	Max	Min	Max/Min	Avg/Min
PARKING	+	1.7 fc	3.7 fc	0.5 fc	7.4:1	3.4:1



LUMINAIRE SCHEDULE

Symbol	Label	Qty	Category Number	Description	Lamp	File	Lumens	LLF	Watts
S1	S1	8	ARE-EDG-SH-DL-12-D-L-L-E-350	120 LED TYPE II MEDIUM EDGE 3000A	ONE HUNDRED TWENTY WHITE LIGHT EMITTING DIODES (LED) -12-C-U-L-350-60K-M	ARE-EDG-SH-DL-12-D-L-L-E-350	Absolute 1,000	1.00	139
S2	S2	8	ARE-EDG-SH-DL-12-D-L-L-E-350	120 LED TYPE II MEDIUM EDGE 3000A	ONE HUNDRED TWENTY WHITE LIGHT EMITTING DIODES (LED) -12-C-U-L-350-60K-M	ARE-EDG-SH-DL-12-D-L-L-E-350	Absolute 1,000	1.00	278
S3	S3	83	ARE-EDG-SH-DL-12-D-L-L-E-350	120 LED TYPE V MEDIUM EDGE 3000A	ONE HUNDRED TWENTY WHITE LIGHT EMITTING DIODES (LED) -12-C-U-L-350-60K-M	ARE-EDG-SH-DL-12-D-L-L-E-350	Absolute 1,000	1.00	278

STATISTICS

Description	Symbol	Avg	Max	Min	Max/Min	Avg/Min
PARKING	+	1.7 fc	3.7 fc	0.5 fc	7.4:1	3.4:1

500 Madison Ave
 TOLL FREE: 877-6664
 415.242.7405 fax
 www.thecollaborativeinc.com
 info@thecollaborativeinc.com



ARCHITECTS
 LANDSCAPE ARCHITECTS
 INTERIOR DESIGNERS
 PLANNERS
 CONTRACT PLANNINGS

C:\WORK\1008\1008.dwg, mda



PROJECT TITLE
**ST. LOUIS
 PREMIUM
 OUTLETS**
 Chesterfield, MO

CHECKED: RSK
 APPROVED: CRK

TCI JOB NO. 106081

SHEET TITLE
**PARKING LOT
 LIGHTING
 CALCULATIONS**
 SHEET NO.
LC-1



1415 Woodford Road
 St. Louis, MO 63103
 Phone: (314) 241-1111
 Fax: (314) 241-1100

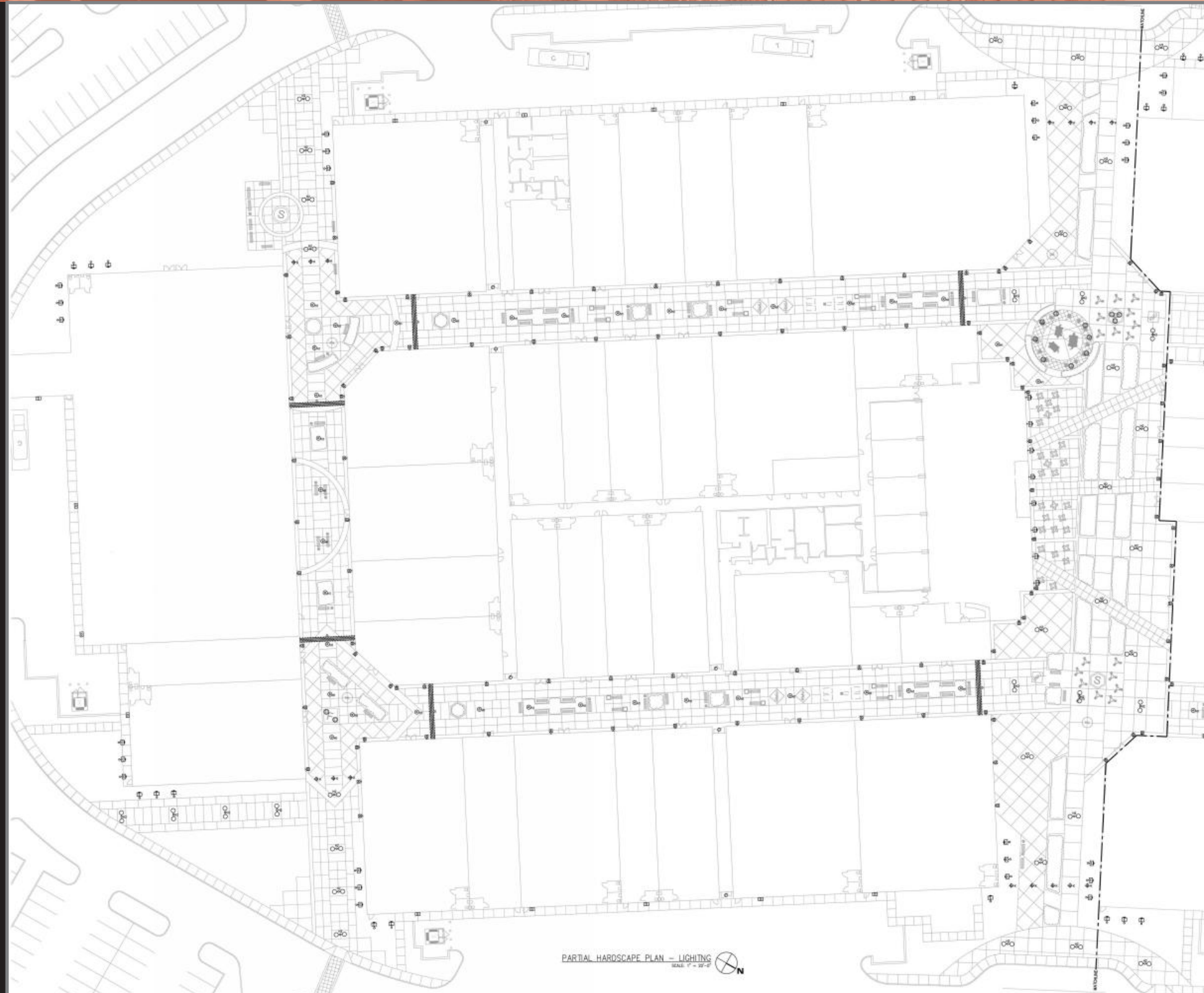
ST. LOUIS PREMIUM OUTLETS
 ARCHITECTURAL REVIEW BOARD

**PREMIUM
 OUTLETS**
 SIMON

**WOODMONT
 OUTLETS**

the COLLABORATIVE inc
 ARCHITECTS | LANDSCAPE ARCHITECTS | INTERIOR DESIGNERS | PLANNERS

PARTIAL HARDSCAPE PLAN - LIGHTING



PARTIAL HARDSCAPE PLAN - LIGHTING
SCALE: 1/8" = 1'-0"

100 Madison Ave
Suite 200
St. Louis, MO 63102
www.thecollaborativeinc.com



THE COLLABORATIVE

ARCHITECTS
LANDSCAPE ARCHITECTS
INTERIOR DESIGNERS
PLANNERS
CONTRACT FURNISHINGS

D

PREMIUM
OUTLETS
SIMON



PROJECT TITLE
ST. LOUIS
PREMIUM
OUTLETS
Chesterfield, MO

B

CHECKED: BSK
APPROVED: CEB

TO: JOB NO. 106081

A

SHEET TITLE
PARTIAL
HARDSCAPE
PLAN
LIGHTING

SHEET NO.
HSL-1



MDA #11006

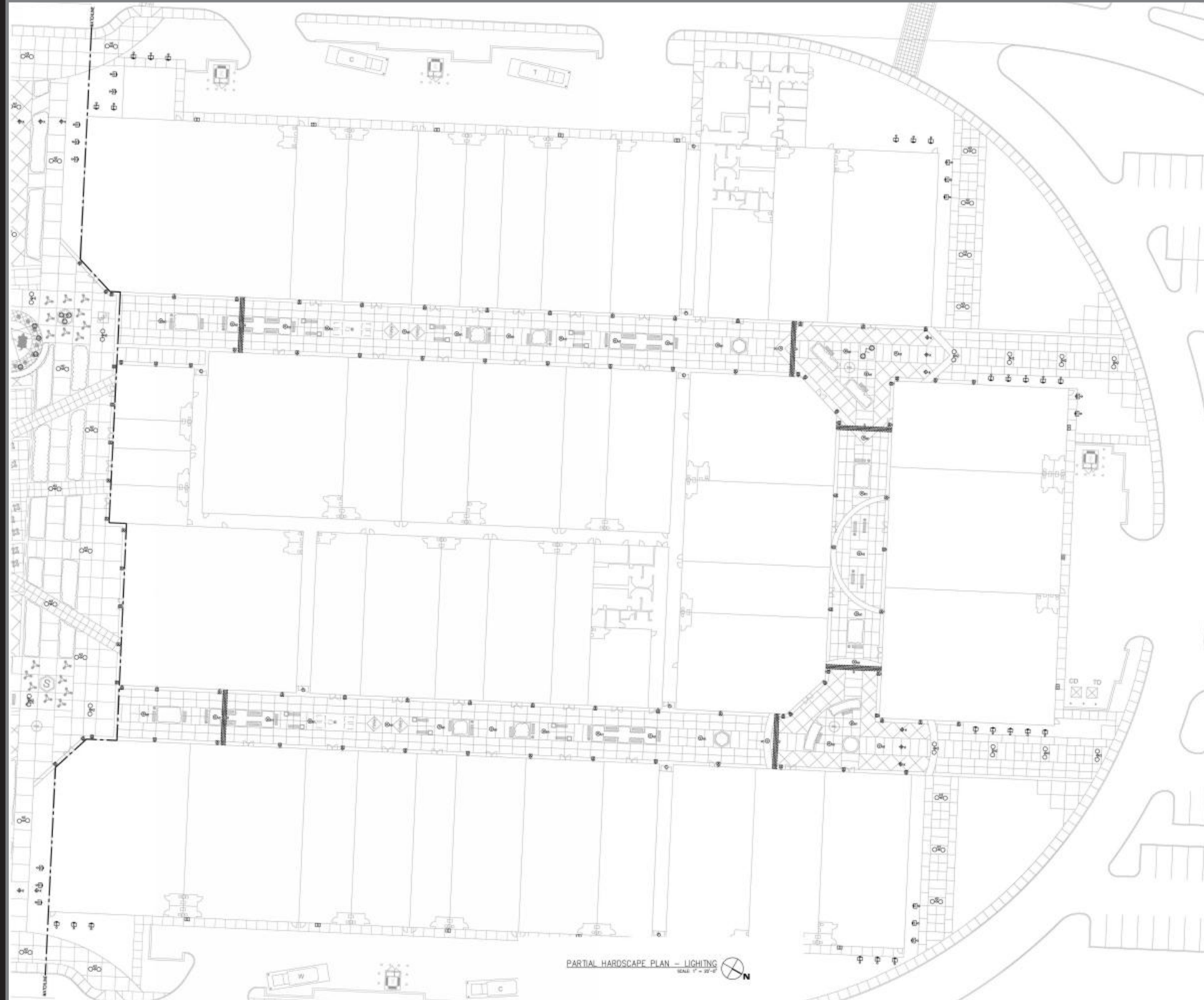
ST. LOUIS PREMIUM OUTLETS
ARCHITECTURAL REVIEW BOARD

PREMIUM
OUTLETS
SIMON

WOODMONT
OUTLETS

the COLLABORATIVE inc
ARCHITECTS | LANDSCAPE ARCHITECTS | INTERIOR DESIGNERS | PLANNERS

PARTIAL HARDSCAPE PLAN - LIGHTING



100 Madison Ave
Suite 2010
415 242 7400 ext
415 242 7400 fax
www.thecollaborative.com



ARCHITECTS
LANDSCAPE ARCHITECTS
INTERIOR DESIGNERS
PLANNERS
CONTRACT FURNISHINGS

D

PREMIUM
OUTLETS
SIMON



PROJECT TITLE
ST. LOUIS
PREMIUM
OUTLETS
Chesterfield, MO

B

CHECKED BSK
APPROVED CBK

TO JOB NO. 106081

SHEET TITLE
PARTIAL
HARDSCAPE
PLAN
LIGHTING

SHEET NO.
HSL-2



ST. LOUIS PREMIUM OUTLETS
ARCHITECTURAL REVIEW BOARD

PREMIUM
OUTLETS
SIMON

WOODMONT
OUTLETS

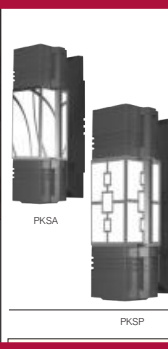
the COLLABORATIVE inc
ARCHITECTS | LANDSCAPE ARCHITECTS | INTERIOR DESIGNERS | PLANNERS

PKSA/PKSP Parkway Square™ – Sconce

1 FIXTURE	2 LAMP/BALLAST	3 DECORATIVE SCREEN	4 OPTIONS			5 COLOR
			GENERAL	HOOD	SCREEN	



PAKWAY SQUARE SCONCE



PAKWAY SQUARE FAMILY OF FIXTURES



PKSM PKSW PKWB PKSA/PKSP

- Features**
- Six configuration, including down beam, down spread, up beam, up spread, down beam/up spread, up beam/down spread, and egress
 - Available with highly efficient LEDs
 - Six decorative screen options
 - Tamper resistant hardware
 - Cast aluminum struts
 - Full cutoff options
 - EISA compliant
 - IP65 rated for horizontal configurations and IP66 rated for vertical configurations
 - Powder coat finish in 13 standard colors with a polymer primer sealer

TYPE _____

JOB NAME _____

LAMP (BY OTHERS) _____

CUSTOMER _____

DATE _____

Consult factory for any custom/modified products

APPROVALS _____

16555 East Gale Ave.
City of Industry | CA 91745
P 626.968.5666 | F 626.369.2695
www.aal.net | Copyright © 2012

PKSA/PKSP Parkway Square™ – Sconce

1 FIXTURE	2 LAMP/BALLAST	3 DECORATIVE SCREEN	4 OPTIONS			5 COLOR
			GENERAL	HOOD	SCREEN	

- 1. FIXTURE**
- ACCENT (SMALL) SCALE**
- PKSA DB Small - Down beam & egress
 - PKSA DS Small - Down spread & egress
 - PKSA UB Small - Up beam & egress
 - PKSA US Small - Up spread & egress
 - PKSA DBUS Small - Down beam/up spread & egress
 - PKSA UBDS Small - Up beam/down spread & egress
- PEDESTRIAN (MEDIUM) SCALE**
- PKSP DB Large - Down beam & egress
 - PKSP DS Large - Down spread & egress
 - PKSP UB Large - Up beam & egress
 - PKSP US Large - Up spread & egress
 - PKSP DBUS Large - Down beam/up spread & egress
 - PKSP UBDS Large - Up beam/down spread & egress

- 2. LAMP/BALLAST**
- 15LED-WW 15 light emitting diode array. Warm white (3500K). Class 2, 120 thru 277 volt. For PKSA DS/US only.
 - 15LED-BW 15 light emitting diode array. Bright white (5100K). Class 2, 120 thru 277 volt. For PKSA DS/US only.
 - 18LED-WW 18 light emitting diode array. Warm white (3500K). Class 2, 120 thru 277 volt. For PKSP DS/US only.
 - 18LED-BW 18 light emitting diode array. Bright white (5100K). Class 2, 120 thru 277 volt. For PKSP DS/US only.
 - 24LED-WW 24 light emitting diode array. Warm white (3500K). Class 2, 120 thru 277 volt. For PKSA DBUS/UBDS only.
 - 24LED-BW 24 light emitting diode array. Bright white (5100K). Class 2, 120 thru 277 volt. For PKSA DBUS/UBDS only.
 - 30LED-WW 30 light emitting diode array. Warm white (3500K). Class 2, 120 thru 277 volt. For PKSP DBUS/UBDS only.
 - 30LED-BW 30 light emitting diode array. Bright white (5100K). Class 2, 120 thru 277 volt. For PKSP DBUS/UBDS only.
 - 24PLL 24 watt PL-L compact fluorescent electronic 120/277 volt ballast. Specify wattage. PKSA only.
 - 36R111 36 watt electronic metal halide R111. 120/277 volt. PKSA only.
 - 20MMC 20 watt electronic metal halide ballast, 120 thru 277 volt. Use PGJ5 base, MiniMastercolor lamp. PKSA only.
 - 39MMC 39 watt electronic metal halide ballast, 120 thru 277 volt. Use PGJ5 base, MiniMastercolor lamp. PKSA only.
 - 50PLL 50 watt PL-L compact fluorescent electronic 120/277 volt ballast. Specify wattage. PKSP only.
 - 39MHT6EB 39 watt electronic metal halide, 120 thru 277 volt ballast. Use G12 base, T6 ceramic lamp. PKSP only.
 - 70MHT6EB 70 watt metal halide ballast, 120/277/347 volt ballast. Use G12 base, T6 ceramic lamp. PKSP only.
 - 35R111 35 watt electronic metal halide R111. 120/277 volt. PKSP only.
 - 70R111 70 watt electronic metal halide R111. 120/277 volt. PKSP only.

TYPE _____

JOB NAME _____

LAMP (BY OTHERS) _____

CUSTOMER _____

DATE _____

Consult factory for any custom/modified products

APPROVALS _____

16555 East Gale Ave.
City of Industry | CA 91745
P 626.968.5666 | F 626.369.2695
www.aal.net | Copyright © 2012

PKSA/PKSP Parkway Square™ – Sconce

1 FIXTURE	2 LAMP/BALLAST	3 DECORATIVE SCREEN	4 OPTIONS			5 COLOR
			GENERAL	HOOD	SCREEN	

- 5. DECORATIVE SCREENS (OPTIONAL)**
- Painted to match fixture. Also available in stainless steel or copper. Not available with horizontal or LED optics.
- DSIN Inlay design painted to match fixture.
 - DSOF Outlay design painted to match fixture.
 - DSWH Wheel design painted to match fixture.
 - DSTRT Top design painted to match fixture.
 - DSSH Striped design painted to match fixture.
 - DSCS Custom design painted to match fixture.

- 6. OPTIONS**
- GENERAL**
- DS99 Dual source - 39 watt mini mastercolor. Specify primary or secondary.
 - BBU Integral battery backup.
 - NEG No egress lamp. Opening is sealed with a cap and painted to match fixture.
- DECORATIVE SCREEN**
- CPR Screen in brushed copper.
 - SSP Screen in brushed stainless steel.

TYPE _____

JOB NAME _____

LAMP (BY OTHERS) _____

CUSTOMER _____

DATE _____

Consult factory for any custom/modified products

APPROVALS _____

16555 East Gale Ave.
City of Industry | CA 91745
P 626.968.5666 | F 626.369.2695
www.aal.net | Copyright © 2012

PKSA/PKSP Parkway Square™ – Sconce

1 FIXTURE	2 LAMP/BALLAST	3 DECORATIVE SCREEN	4 OPTIONS			5 COLOR
			GENERAL	HOOD	SCREEN	

HOUSING

Parkway Square housings shall be cast aluminum, A356 alloy, free of any porosity, foreign materials, or cosmetic fillers. The vertical lens shall be opal, semi translucent high impact injection molded lighting grade acrylic and shall not be field replaceable. The vertical struts shall be cast aluminum and painted to match the fixture. The lens shall be sealed to the housing with a molded silicone gasket on the top and bottom. The optical lens frame shall be secured with four captive socket cap screws and shall be sealed with a one piece memory retentive, molded silicone gasket. The lamp compartment shall have a molded silicone plug to completely seal the optical system from insects or dirt emanating from the electrical box or conduit. Four stainless steel screws shall release the canopy to allow electrical access. All internal and external hardware shall be stainless steel and zinc.

SAFETY

The fixture shall include an integral secondary source to provide path of egress illumination from building to the public way. The hidden MR16 lamp, powered as a remote head is able to be angle up to 15° in either direction.

WALL PLATE

Wall plate shall be secured into wall over j-box and shall be wired to the power circuit. Fixture shall be attached to the wall plate by four set-screws.

FINISH

Fixture finish shall consist of a five stage pretreatment regimen with a polymer primer sealer, oven dry off, and top coated with a thermoset super TGIC polyester powder coat finish. The finish shall meet the AAMA 605.2 performance specification which includes passing a 3000 hour salt spray test for corrosion resistance.

REFLECTOR

The reflector is formed aluminum with bright dip anodized finish for pedestrian scale and bead blasted finish for accent scale fixtures.

ELECTRICAL

The ballast or LED driver electrical assembly shall be integral to the fixture and mounted to the cast canopy, the electrical assembly shall be provided with a quick disconnect plug, and removable by loosening two screws. All metal halide ballasts shall be electronic. T6 metal halide lamps shall use G12 sockets, R111 lamps shall use GXE-5 sockets, PL-L fluorescent lamps shall use 2G11 sockets. LED drivers shall have a drive current of 350mA. Standard color temperatures for Nichia NSL163 and NSW163 LEDs shall be 3500K and 5100K. The ballast or LED driver shall accept an input voltage of 120 through 277 volts, and shall be wired at the factory for 277 volts, unless specified. The MR16 lamp for emergency egress feature shall be included and powered by 120 volt input transformed into low-voltage (12 volt) by the electronic transformer (included). The MR16 lamp shall use a miniature bi-pin base.

CERTIFICATION

The fixture is listed with ETL for outdoor, wet location use and shall conform to UL1598 and Canadian CSA Std. C22.2 no.9. IP65 rated for horizontal configurations and IP66 rated for vertical configurations.

WARRANTY

Fixture is warranted for three years. Driver components carry the driver manufacturer's limited warranty. Any unauthorized return, repair, replacement or modification of the Product(s) shall void this warranty. This warranty applies only to the use of the Product(s) as intended by AAL and does not cover any misapplication or misuse of said Product(s), or installation in hazardous or corrosive environments. Contact AAL for complete warranty language, exceptions, and limitations.

TYPE _____

JOB NAME _____

LAMP (BY OTHERS) _____

CUSTOMER _____

DATE _____

Consult factory for any custom/modified products

APPROVALS _____

16555 East Gale Ave.
City of Industry | CA 91745
P 626.968.5666 | F 626.369.2695
www.aal.net | Copyright © 2012

TYPE A + B

ST. LOUIS PREMIUM OUTLETS
ARCHITECTURAL REVIEW BOARD

PREMIUM OUTLETS
SIMON

WOODMONT OUTLETS
the COLLABORATIVE inc
ARCHITECTS | LANDSCAPE ARCHITECTS | INTERIOR DESIGNERS | PLANNERS

SPI LIGHTING SPECIFICATION SHEET

SPI
Echo Round 9.0
Exterior Wall
EEW9501 Forward Throw

JOB NAME: _____ TYPE: °C
MODEL NO.: _____
LAMP: _____

Dimensions

	W	L	MC	H1	H2
	11.4 in (29 cm)	27.5 in (69.9 cm)	13.7 in (34.8 cm)	4.2 in (10.7 cm)	8.3 in (21.1 cm)

Description
Echo Round 9.0 is designed to address larger, high-ceiling spaces such as atriums, gymnasiums, libraries, natoriums and open offices. Its vast lamping range and premium light control provides sufficient and visually uniform illumination to surfaces. Round's proportionate size and basic shape integrates seamlessly into a space.

Features

- Formed stainless steel yoke brackets equip the fixture with durable mounting components that will not rust or corrode.
- Standard thermoset polyester powder coat paint provides durable protection in a palette of color options. Custom colors available upon request.
- Extruded aluminum construction provides durable protection for internal components and is recyclable.
- Cast aluminum end caps protect internal components and are recyclable.
- Field adjustable housing locks into position, enabling precise fixture alignment for high-quality design performance.
- Tempered glass lens protects HID and tungsten halogen lamp engines.
- Premium 95% reflective aluminum is utilized in the highly-efficient and effective reflector design.

Weight
Consult Factory.

Contents

- Features
- Technical Notes
- Ordering Information
- Finishes

SPI is a brand of SPI LIGHTING® Tel (262)242-1420 contact@specSPI.com © 2011 (Design modification rights reserved.) 12/28/11 02:17:39

SPI LIGHTING SPECIFICATION SHEET Page 2

EEW9501 Technical Notes

Accessories

- Only one louver option can be specified per fixture.

Construction

- Luminaires over 27" in length have a two-piece yoke assembly.

Electrical

- Black weatherproof power cord with watertight fittings.
- HID versions have integral ballasts eliminating the need for remote mounting, simplifying installation.
- Thermally protected ballast limits operating temperature.
- Class "C" sound rated ballast.
- ETL listed to UL standards (US and Canada) for use in wet locations.

Finish

- Housing and mounting components painted to match, unless otherwise specified.

Mounting

- Steel cover fits over standard 4" octagonal junction box.

SPI is a brand of SPI LIGHTING® Tel (262)242-1420 contact@specSPI.com © 2011 (Design modification rights reserved.) 12/28/11 02:17:39

SPI LIGHTING SPECIFICATION SHEET Page 3

EEW9501 Forward Throw

Model Number/Style: EEW9501 [FT] Select Lamping: [] Select Voltage: [] Select Lamp Options: []

Not all options are available in all configurations, consult factory for details.

Lamping	Photometry	Voltage
1M17SPS	1PSMH17S/8728/MOG/U ILL62257	120V 120 Volt
1M29SPS	1PSMH29S/8728/MOG ILL62257	277V 277 Volt
1M31SPS	1PSCM31S/T9/P6218	
1M320PS	1PSMH320/ED08/MOG	
1M350PS	1PSMH350/ED08/MOG ILL62257	
1M400PS	1PSMH400/ED08/MOG ILL62257	

Lamp Options

- CS Cut-off Shield
- F Fusing

SPI is a brand of SPI LIGHTING® Tel (262)242-1420 contact@specSPI.com © 2011 (Design modification rights reserved.) 12/28/11 02:17:39

SPI LIGHTING SPECIFICATION SHEET Page 4

EEW9501 Forward Throw

The finishes shown here are representations of the standard color selections available for SPI Lighting products. There may be variations in color, texture and finish between the samples shown here and the actual product finishes. If a more accurate paint color or metal finish is required, please contact us at finishes@spilighting.com.

Painted Aluminum

PT01 ² SuperWhite	PT02 ¹ White	PT03 ¹ Morning Light	PT04 ¹ Warm White	PT05 ¹ Putty
PT06 ¹ Warm Beige	PT07 ¹ Light Taupe	PT08 ¹ Medium Taupe	PT09 ¹ Medium Gray	PT10 ¹ Dark Gray
PT11 ¹ Black	PT12 ¹ Dark Chocolate	PT13 ¹ Warm Gray	PT14 ¹ Light Gray	PT15 ¹ Sage
PT16 ¹ Spruce	PT17 ¹ Red	PT18 ¹ Deep Red	PT19 ¹ Blue	PT20 ¹ Dark Green
PT21 ⁴ Pearl White	PT22 ⁴ Platinum	PT23 ⁴ Deep Copper	PT28 ⁴ Dark Stainless	PT29 ⁴ Red Brass
PT31 ⁴ Medium Bronze	PT32 ⁴ Dark Bronze	PT33 ⁴ Dark Blue	PT40 ¹ Yellow	PT41 ¹ Orange
PT42 ¹ Sky Blue	PT43 ¹ Teal	PT44 ¹ Green	PT45 ¹ Purple	PT46 ¹ Aluminum
PT47 ¹ Deep Red Brass	PT48 ¹ Brass	PT49 ¹ Bronze		

*Textured ²Glossy ³Metallic Textured ⁴Metallic Glossy
Custom colors available, consult factory for details.

SPI is a brand of SPI LIGHTING® Tel (262)242-1420 contact@specSPI.com © 2011 (Design modification rights reserved.) 12/28/11 02:17:39

TYPE C

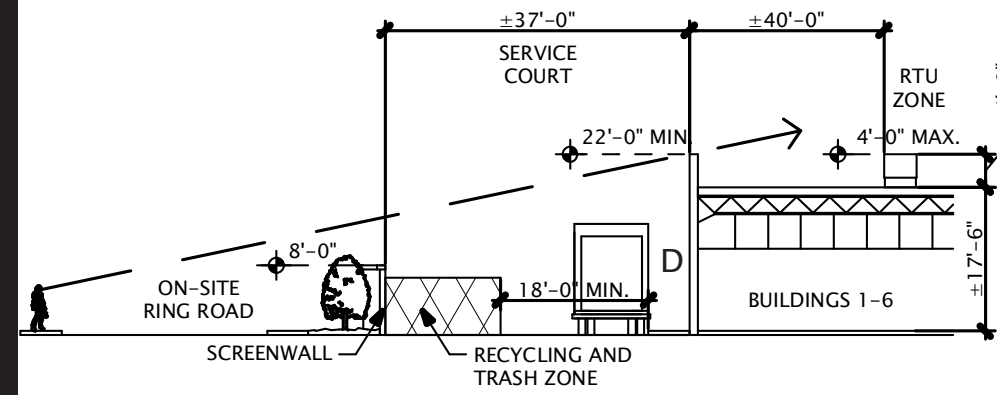
ST. LOUIS PREMIUM OUTLETS
ARCHITECTURAL REVIEW BOARD

PREMIUM
OUTLETS
SIMON

WOODMONT
OUTLETS

the COLLABORATIVE inc
ARCHITECTS | LANDSCAPE ARCHITECTS | INTERIOR DESIGNERS | PLANNERS

LIGHTING CUT SHEETS



SCREENWALL SECTION

LITHONIA LIGHTING

FEATURES & SPECIFICATIONS
INTENDED USE — For building and wall-mounted applications.
CONSTRUCTION — Rugged, die-cast, single-piece aluminum housing. Die-cast door frame has a 1/8" thick tempered glass lens. Door frame is fully gasketed with one-piece solid silicone.
OPTICS — Segmented reflectors for superior uniformity and control. Reflectors are interchangeable. Three full cutoff distributions available: FT (forward throw), MD (medium throw) and WT (wide throw).
ELECTRICAL — Ballast: 50W-150W utilizes a high-reactance, high-power-factor ballast. Metal Halide 150W and below are standard with pulse-start technology. 55 watt-hours reactance high power factor ballast. 175W utilizes a constant-voltage autotransformer ballast. CSA NOM or IRL required for product shipments outside of the US for 175W. Not available with 175W SCWA. Ceramic metal halide lamps are recommended for use in applications where superior color rendition, lumen maintenance and longer lamp life are desired.
 Quick disconnect plug easily disconnects reflector from ballast. Ballasts are 100% factory tested.
 Socket: Porcelain, medium-base socket with copper alloy, nickel-plated screw shell and center contact. UL listed 660V, 600V 48Y pulse rated.
 Finish: Standard finish is textured dark bronze (DOB) corrosion-resistant polyester powder finish. Additional architectural colors are available. Spraying is also available.
INSTALLATION — Universal mounting mechanism with integral mounting support allows fixture to hang down. Bubble level provides correct alignment with each installation.
LISTINGS — UL Listed (standard). CSA Certified (see Options). Suitable for wet locations (lamp location listed in less-up orientation). WLU option offers wet location listing in up orientation (see Options). IP65 rated. 25°C ambient. E12/E14 U.S. Patent No. 7,737,666.
 Note: Specifications subject to change without notice.

Decorative Wall-Mounted Lighting
WST
 METAL HALIDE: 50W-175W
 HIGH PRESSURE SODIUM: 35W-150W

Specifications
 Length: 16-1/4 (41.2)
 Depth: 9-1/8 (23.2)
 Overall Height: 7-1/4 (18.4)
 *Weight: 30 lbs (13.6 kg)
 All dimensions are inches (centimeters) unless otherwise indicated.
 *Weight as configured in example below.

ORDERING INFORMATION — For shortest lead times, configure product using standard options (shown in bold).

Series	Wattage/Source	MD	Distribution	Voltage	Ballast	Mounting	Options
WST	High Pressure Sodium	Metal Halide	Ceramic Metal Halide	FT Forward throw	120 208 ²	(blank) Magnetic ballast Shipped separately ¹³	Surface mount Shipped separately ¹³ SP Single fuse (120, 277, 347V) ¹⁴ DF Double fuse (208, 240V) ¹⁵ DC12 Emergency circuit 12-volt (two 35W lamp included) ¹⁶ DC2012 Emergency circuit 12-volt (two 20W lamp included) ¹⁶ DC2012 Emergency circuit 12-volt (two 20W lamps included) ¹⁶
	35 ¹⁷	70M	50MHC	MD Medium throw (located lamp std.)	240 ¹⁸	CWI Constant wattage isolated	UTS Upright 5 degrees
	50 ⁵	100M	70MHC	WT Wide throw	277	Abe Star	
	70 ⁵	150M	100MHC		347	SCWA Super CSA pulse start ballast ¹⁹	
	100 ⁵	175M	150MHC		23050RZ ²⁰		
	150 ⁵						

Options (continued)
 ELED Emergency LED secondary source battery pack with time delay (+7 min. operating temperature)²¹
 WLED Emergency LED secondary source (two modules) battery pack with time delay (+7 min. operating temperature)²¹
 DELED Emergency LED secondary source (two modules) battery pack with time delay (+7 min. operating temperature)²¹
 DFL Diffusing lens
 EC Emergency circuit¹⁶
 IBS Internal backlight shield²²
 PE Photoelectric cell-button type (in a TB)²³

Notes
 1. DIM
 2. These wattages do not comply with California Title 20 regulations.
 3. Must specify CRI for use in Canada.
 4. Optional multi-tap ballast (120, 208, 240, 277V; 120, 277, 347V in Canada; ships in 120V/240V).
 5. Consult factory for available wattages.
 6. Available with 150M or 150MHC only.
 7. May be ordered as an accessory with probe²⁴. Must specify finish.
 8. Not available with DC option.
 9. Not available with ELED, DELED, EC or DC.
 10. Maximum wattage 100M, 70M, 50M. Must specify 120V or 277V. Not available with DC, EC or DC.
 11. Maximum allowable wattage lamp included.
 12. Not available with ELED, DC or DC.
 13. Not available with medium throw (MD, MHC, MDHC) distributions.
 14. Must be ordered with fixture, cannot be field installed.
 15. Not available with ELED, EC or DC.
 16. See www.lithonia.com/techspecs for additional color options.
 17. Black finish only.
 18. Must be specified. LEP not available with BMC.
 19. Not available with medium throw (MD, MHC, MDHC) distributions.
 20. Must be ordered with fixture, cannot be field installed.
 21. See www.lithonia.com/techspecs for additional color options.
 22. Must be specified. LEP not available with BMC.

LITHONIA LIGHTING
 An Acuity Brands Company

OUTDOOR WST_M_5

WST Metal Halide, High Pressure Sodium Wall Mounted

WST 150MHC FT LTL11069P
 ISOLLLUMINANCE PLOT (Footcandle)

 150W pulse start metal halide lamp, horizontal lamp orientation. Footcandle values based on 12' mounting height, 14000 rated lumens. Luminaire Efficiency: 62.9%.

WST 150MHC MD LTL11068P
 ISOLLLUMINANCE PLOT (Footcandle)

 150W pulse start metal halide lamp, horizontal lamp orientation. Footcandle values based on 12' mounting height, 12500 rated lumens. Luminaire Efficiency: 60.2%.

WST 150MHC WT LTL11070P
 ISOLLLUMINANCE PLOT (Footcandle)

 150W pulse start metal halide lamp, horizontal lamp orientation. Footcandle values based on 12' mounting height, 14000 rated lumens. Luminaire Efficiency: 62.9%.

Lamp	Initial lumens	Mounting height			
		10'	12'	14'	16'
Metal Halide					
50W MH	3,900	0.43	0.30	0.22	0.17
70W MH	5,500	0.62	0.43	0.31	0.24
100W MH	8,500	0.95	0.66	0.48	0.37
150W MH	12,500	1.41	0.98	0.72	0.55
175W MH	12,800	1.44	1.0	0.73	0.56
High Pressure Sodium					
35W HPS	1,250	0.26	0.18	0.13	0.10
50W HPS	4,000	0.45	0.31	0.23	0.17
70W HPS	6,400	0.72	0.50	0.37	0.28
100W HPS	9,500	1.07	0.74	0.54	0.41
150W HPS	16,000	1.80	1.25	0.91	0.70

Lamp options

# of lamps/wattage	DC12	DC12	DC12	DC2012	DC2012	EC	ELED	DELED
35S	■	■	■	■	■	■	■	■
50S	■	■	■	■	■	■	■	■
70S	■	■	■	■	■	■	■	■
100S	■	■	■	■	■	■	■	■
150S	■	■	■	■	■	■	■	■
50M	■	■	■	■	■	■	■	■
70M	■	■	■	■	■	■	■	■
100M	■	■	■	■	■	■	■	■
150M	■	■	■	■	■	■	■	■
175M	■	■	■	■	■	■	■	■

Lamp options Emergency Option Lamp Compatibility

Lamp options	DC12	DC12	DC12	DC2012	DC2012	EC	ELED	DELED
35S	■	■	■	■	■	■	■	■
50S	■	■	■	■	■	■	■	■
70S	■	■	■	■	■	■	■	■
100S	■	■	■	■	■	■	■	■
150S	■	■	■	■	■	■	■	■
50M	■	■	■	■	■	■	■	■
70M	■	■	■	■	■	■	■	■
100M	■	■	■	■	■	■	■	■
150M	■	■	■	■	■	■	■	■
175M	■	■	■	■	■	■	■	■

LITHONIA LIGHTING
 An Acuity Brands Company

OUTDOOR WST_M_5

LITHONIA LIGHTING

FEATURES & SPECIFICATIONS
INTENDED USE — For landscape and facade lighting.
CONSTRUCTION — Rugged, die-cast, single piece low copper alloy aluminum housing. Die-cast doorframe has impact-resistant, tempered glass lens. Doorframe is fully sealed with a closed-cell silicone gasket. Standard finish is textured dark bronze (DOB) polyester powder finish, with other architectural colors available. Patent No. D552,778.
OPTICS — Anodized aluminum reflectors, segmented, specular or hammered finish for superior uniformity and control. Reflectors are interchangeable and allow for tool-less access to electrical components.
ELECTRICAL — 50W-150W utilizes a high-reactance, high-power-factor ballast. 175W utilizes a constant-voltage autotransformer ballast. Quick disconnect plug easily disconnects reflector from ballast and fixture from supply wire. Ballasts are precision-wound and 100% factory tested. UL Listed. CSA, NOM or IRL required for probe start shipments outside of the US for 175W. Not available with 175W SCWA. Ceramic metal halide lamps are recommended for use in applications where superior color rendition, lumen maintenance and longer lamp life are desired.
 Socket: Porcelain, medium-base socket with copper alloy, nickel-plated screw shell and center contact.
INSTALLATION — Standard mounting is cast "N" threaded knuckle. Mounting mechanism features infinite locking points for aiming precision. Optional yoke mounting available, heavy-duty compact cast aluminum yoke adaptor to maintain future aesthetics. Provided with painted steel yoke and three feet of 16/3 SEOW cable.
LISTING — UL listed suitable for wet locations in all orientations. UL Listed to U.S. and Canadian safety standards (see Options). NOM Certified (see Options). IP66 rated. Canadian patent pending.
 Note: Specifications subject to change without notice.

AERIS
 Architectural Floodlighting
ASF1
 METAL HALIDE: 50W-175W
 HIGH PRESSURE SODIUM: 50W-150W

Specifications
 EPA: 1.20 ft²
 Width: 15-1/2 (39.4)
 Depth: 7-5/8 (19.4)
 Height: 10 (25.4)
 Overall Height: 10-7/8 (27.4)
 *Max. Weight: 20 lbs (9.1 kg)
 All dimensions are inches (centimeters) unless otherwise indicated.
 *Weight as configured in example below.

ORDERING INFORMATION — For shortest lead times, configure product using standard options (shown in bold).

Series	Wattage	Distribution	Voltage	Ballast	Mounting	Options	Finish ²	Lamp ³
ASF1	Metal Halide	SP Spot	120	(blank) Magnetic ballast	Shipped installed	Shipped installed in fixture	DOB ⁴ Dark bronze, textured	LPI Lamp included
	50M	HSP Horizontal spot	208 ²	CWI Constant wattage isolated	(blank) Yoke mount	SP Single fuse (120, 277, 347V) ¹⁴	DSST Sandstone, textured	L/UP Less lamp
	70M	HSP Narrow spot	240 ¹⁸	Abe Star	YK Yoke mount	DF Double fuse (208, 240, 480V) ¹⁵	DNAT Natural aluminum, textured	
	100M	WDF Wide Flood	277		AFS1MHC Standalone mount	PE Photoelectric cell button type (in a 480V or TB) ²³	DWBG White, textured	
	150M	MDF Medium Flood	347	SCWA Super CSA pulse start ballast ¹⁹	AFS1MHC Wall mount arm	CSA CSA certified ²⁴	DBLB Black, textured	
	175M	VTV Vertical narrow	480 ¹⁸		AFS1MHC Two mounting bar	NOM NOM certified ²⁵	CR Corrosion resistance	
	50MHC	VTV Vertical narrow	23050RZ ²⁰		AFS1MHC Architectural J-box	INTL International shipment for 175M	CR Corrosion resistance	
	70MHC	VTV Vertical wide			Shipped separately ¹³	ASPHCS Glass shield (upper or bottom view) ²⁶	CR Corrosion resistance	
	100MHC				AFS1MHC Wall mount	ASF1EV Eggcrater view (black only)	CR Corrosion resistance	
	150MHC				AFS1MHC Architectural J-box	ASF1EV Full view ²⁷	CR Corrosion resistance	
	High Pressure Sodium				AFS1MHC Architectural J-box	ASF1BD Beam shield ²⁸	CR Corrosion resistance	
	35S					ASF1BVG Vandal guard	CR Corrosion resistance	
	50S					ASF1BVG Full view/vandal guard ²⁹	CR Corrosion resistance	
	70S							
	100S							
	150S							

Notes
 1. These wattages do not comply with California Title 20 regulations.
 2. Must specify CRI in Canada.
 3. Optional multi-tap ballast (120, 208, 240, 277V; 120, 277, 347V in Canada; ships in 120V/240V).
 4. Consult factory for availability.
 5. Available with 150M or 150MHC only.
 6. May be ordered as an accessory.
 7. Must specify finish when ordered as an accessory.
 8. Must be ordered with fixture, cannot be field installed.
 9. See www.lithonia.com/techspecs for additional color options.
 10. Must be specified. LEP not available with BMC.

LITHONIA LIGHTING
 An Acuity Brands Company

OUTDOOR ASF1_M_5

ASF1 Metal Halide, High Pressure Sodium Architectural Flood

ASF1 150M HSP
 TEST NO. LTL 14889P
 Cartesian Plot

 ISOLLLUMINANCE PLOT (FC) Mounting Height = 20 ft. Classification: Uncolimated (Type L, Very Short), Cutoff

ASF1 150M NSP
 TEST NO. LTL 148256P
 Cartesian Plot

 ISOLLLUMINANCE PLOT (FC) Mounting Height = 20 ft. Classification: Uncolimated (Type L, Very Short), Cutoff

ASF1 150M WDF
 TEST NO. LTL 14888P
 Cartesian Plot

 ISOLLLUMINANCE PLOT (FC) Mounting Height = 20 ft. Classification: Uncolimated (Type L, Very Short), Cutoff

LITHONIA LIGHTING
 An Acuity Brands Company

OUTDOOR ASF1_M_5

TYPE D

TYPE E

ST. LOUIS PREMIUM OUTLETS
 ARCHITECTURAL REVIEW BOARD

PREMIUM OUTLETS
 SIMON
 WOODMONT OUTLETS
 the COLLABORATIVE inc
 ARCHITECTS | LANDSCAPE ARCHITECTS | INTERIOR DESIGNERS | PLANNERS

FEATURES

OPTICAL SYSTEM

- Aluminum upper reflector coated with highly reflective white paint provides high efficiency and an evenly illuminated aperture appearance.
- Available with tempered prismatic lens (T73), flat Fresnel lens (FFL) or flat opal lens (FOL).
- Regressed white door (RW) or stepped black baffle (SB) available with white painted flange provided.
- Door is retained by self-aligning, torsion support springs, preventing gaps between door and ceiling.

MECHANICAL SYSTEM

- 16-gauge galvanized steel mounting/plaster frame with integral brackets to retain optical system. Maximum 1-1/2" ceiling thickness.
- 16-gauge galvanized steel mounting bars with continuous 4" vertical adjustment are shipped pre-installed. Post installation adjustment possible without the use of tools from above or below ceiling.
- Galvanized steel junction box with hinged access covers and spring latch. Two combination 1/2"-3/4" and three 1/2" knockouts for straight-through conduit runs. Capacity: 8 (4 in, 4 out) No. 12 AWG conductors rated for 90°C.

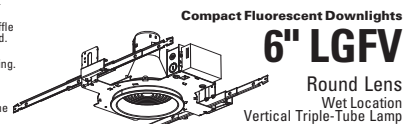
ELECTRICAL SYSTEM

- Rugged aluminum lampholder housing.
- Vertically-mounted, four-pin, positive-latch, thermoplastic socket.
- Class P, thermally-protected, high power factor, electronic ballast mounted to the junction box.

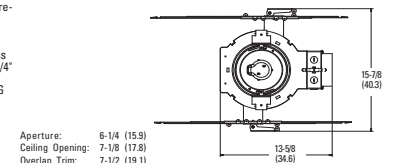
LISTING

- Fixtures are UL Listed for thru-branch wiring, Non-IC recessed mounting and wet locations. Listed and labeled to comply with Canadian Standards.

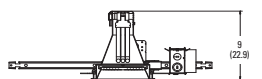
Type Catalog number



Compact Fluorescent Downlights
6" LGFV
Round Lens
Wet Location
Vertical Triple-Tube Lamp



Aperture: 6-1/4 (15.9)
Ceiling Opening: 7-1/8 (17.8)
Overlap Trim: 7-1/2 (19.1)
All dimensions are inches (centimeters).



ORDERING INFORMATION

Example: **LGFV 26TRT 6RW T73 MVOLT**

Choose the boldface catalog nomenclature that best suits your needs and write it on the appropriate line. Order accessories as separate catalog numbers (shipped separately).

LGFV

Series	Wattage/Lamp	Door Frame	Shielding	Voltage	Ballast ¹	Options
LGFV	18TRT¹	6RW Regressed white door	T73 Tempered prismatic lens	MVOLT²	(blank) Electronic ballast standard	CP Chicago Plenum
	26TRT¹	SB Stepped black baffle	FFL Flat Fresnel lens	120	ECOS EcoSystem electronic ballast	T8DA Tamper-Resistant Door Assembly
	42TRT	FOL Flat opal lens	FOL Flat opal lens	347	ADEZ³ Advance Mark X™ electronic dimming ballast	LRC Provides compatibility with Lithonia Reloc® System. Lithonia Reloc System can be installed less this option with connectors provided by others. Access above ceiling required.
					GMF Single slow-blow fuse (not available with MVOLT)	GLR Single fast-blow fuse (not available with MVOLT)
					WLP 500PK Lamp (shipped separately)	RIF Radio Interference Filter
					ELR Emergency battery pack. Remote test switch provided.	GSKT Foam gasketing, ships uninstalled
					SS Simply5 system ballast	NSDP Sensorswitch nLight™ dimming relay
Accessories						
					SCA6 Sloped ceiling adapter. Degree of slope must be specified (100, 150, 200, 250, 300). Ex. SCA6 100.	

NOTES

- Will also operate DIT 4-PIN lamps of same wattage.
- Multi-volt electronic ballast capable of operating on any line voltage from 120V through 277V, 50 or 60 Hz.
- For additional ballast types, refer to Technical Bulletins tab.
- 120 or 277V only.
- SIMPLY5™ includes 9" SMC Reloc wiring system (shipped separately). Available in 120 or 277V only. Not available in 19W. See Simply5.net for more information.
- For compatible Reloc systems, refer to Technical Bulletins tab.
- Not available with ELR option.
- For dimensional changes refer to Technical Bulletins tab.
- One SA relay with one 5-1/2" IDC dimming output, shipped installed. Requires additional nLight bus power supply.



GOTHAM ARCHITECTURAL DOWNLIGHTING
1400 Lester Road, Conyers Georgia 30012
P 800 315 4982 F 770 860 3129

LGFV 6 DCF-530

6" LGFV Round Lens

Distribution curve Distribution data Output data Coefficient of utilization Illuminance Data at 30" Above Floor for a Single Luminaire

LGFV 32TRT 6RW T73, 32TRT lamp, 1.1 s/mh, 2400 rated lumens, Test no. LTL14208

From 0°	Avg	Lumens	Zone	Lumens	% Lamp	pf	Coefficient of utilization				Illuminance Data at 30" Above Floor for a Single Luminaire				
							80%	70%	50%	30%	50% beam angle	10% beam angle	Initial ft.	ft. at	ft. at
0	563	0°-30°	408.5	17.0	3.0	1.0	1.39	1.39	1.39	1.39	18.6	5.9	5.3	11.2	1.9
5	563	0°-40°	408.8	25.0	1.0	1.0	1.39	1.39	1.39	1.39	18.6	5.9	5.3	11.2	1.9
15	563	0°-60°	410.1	33.8	2.0	1.0	1.39	1.39	1.39	1.39	18.6	5.9	5.3	11.2	1.9
25	563	0°-90°	412.8	36.4	3.0	1.0	1.39	1.39	1.39	1.39	18.6	5.9	5.3	11.2	1.9
35	563	90°-180°	0.0	0.0	4.0	1.0	1.39	1.39	1.39	1.39	18.6	5.9	5.3	11.2	1.9
45	171	0°-180°	412.8	36.4	5.0	1.0	1.39	1.39	1.39	1.39	18.6	5.9	5.3	11.2	1.9
55	83				6.0	1.0	1.39	1.39	1.39	1.39	18.6	5.9	5.3	11.2	1.9
65	41				7.0	1.0	1.39	1.39	1.39	1.39	18.6	5.9	5.3	11.2	1.9
75	16				8.0	1.0	1.39	1.39	1.39	1.39	18.6	5.9	5.3	11.2	1.9
85	4				9.0	1.0	1.39	1.39	1.39	1.39	18.6	5.9	5.3	11.2	1.9
90	0				10.0	1.0	1.39	1.39	1.39	1.39	18.6	5.9	5.3	11.2	1.9

LGFV 32TRT 6RW FFL, 32TRT lamp, 1.1 s/mh, 2400 rated lumens, Test no. LTL14209

From 0°	Avg	Lumens	Zone	Lumens	% Lamp	pf	Coefficient of utilization				Illuminance Data at 30" Above Floor for a Single Luminaire				
							80%	70%	50%	30%	50% beam angle	10% beam angle	Initial ft.	ft. at	ft. at
0	604	0°-30°	463.7	19.3	3.0	1.0	1.45	1.45	1.45	1.45	20.0	6.1	5.0	11.3	2.0
5	624	0°-40°	479.7	28.3	1.0	1.0	1.45	1.45	1.45	1.45	20.0	6.1	5.0	11.3	2.0
15	605	0°-60°	514.0	38.1	2.0	1.0	1.45	1.45	1.45	1.45	20.0	6.1	5.0	11.3	2.0
25	517	0°-90°	595.1	41.5	3.0	1.0	1.45	1.45	1.45	1.45	20.0	6.1	5.0	11.3	2.0
35	348	90°-180°	0.0	0.0	4.0	1.0	1.45	1.45	1.45	1.45	20.0	6.1	5.0	11.3	2.0
45	184	0°-180°	595.1	41.5	5.0	1.0	1.45	1.45	1.45	1.45	20.0	6.1	5.0	11.3	2.0
55	99				6.0	1.0	1.45	1.45	1.45	1.45	20.0	6.1	5.0	11.3	2.0
65	54				7.0	1.0	1.45	1.45	1.45	1.45	20.0	6.1	5.0	11.3	2.0
75	21				8.0	1.0	1.45	1.45	1.45	1.45	20.0	6.1	5.0	11.3	2.0
85	4				9.0	1.0	1.45	1.45	1.45	1.45	20.0	6.1	5.0	11.3	2.0
90	0				10.0	1.0	1.45	1.45	1.45	1.45	20.0	6.1	5.0	11.3	2.0

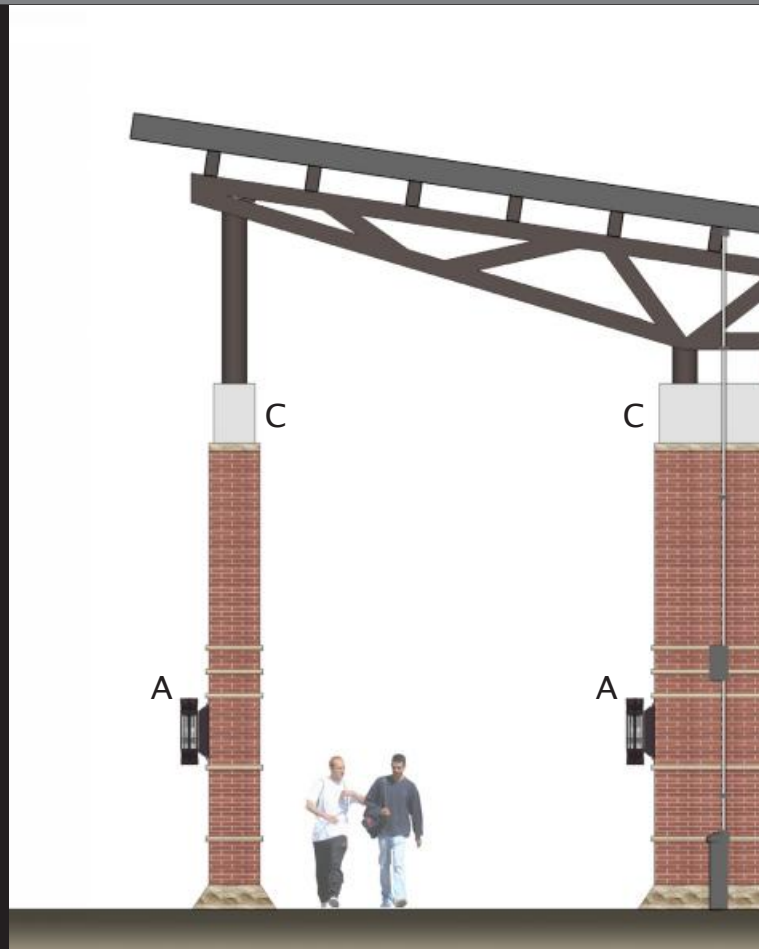
NOTES:
1. For electrical characteristics consult Technical Bulletin tab.
2. Tested to current IES and NEMA standards under stabilized laboratory conditions. Various operating factors can cause differences between laboratory data and actual field measurements. Dimensions and specifications are based on the most current available data and are subject to change without notice.

DCF-530

©2005, 2010, 2011 Acuity Brands Lighting, Inc.
All Rights Reserved.



GOTHAM ARCHITECTURAL DOWNLIGHTING
1400 Lester Road, Conyers Georgia 30012
P 800 315 4982 F 770 860 3129
www.gothamlighting.com



TYPE F

FOOD PAVILION SECTION

ST. LOUIS PREMIUM OUTLETS

ARCHITECTURAL REVIEW BOARD

PREMIUM OUTLETS
SIMON



WOODMONT OUTLETS

the COLLABORATIVE inc
ARCHITECTS | LANDSCAPE ARCHITECTS | INTERIOR DESIGNERS | PLANNERS



Exhibitor Series

TOKISTAR® Exhibitor Series is a wet-location festoon lighting system widely used in amusement parks, shopping centers, street decorations and promenades. Exhibitor fixtures may also be surface mounted to accent rooflines and other architectural features.

Light sources include solid-state LEDs and incandescent xenon lamps, enclosed within shatterproof polycarbonate globes. These globes are injection blow-molded for a seamless appearance and excellent clarity. Each globe includes two o-rings for a secure and weatherproof seal to the socket.

LEDs

Tokistar LEDs operate at 24VAC and consume only 0.48 Watts. This makes them our most energy-efficient light source and dramatically increases the maximum run length of each fixture. With incredible life ratings, LEDs are ideally suited for continuous operation in commercial applications.



Xenon Lamps

For a traditional incandescent look, our wedge-base lamps create crisp pin-points of light when specified with transparent globes. These xenon-gas lamps have the apparent brightness of much higher wattage standard incandescent lamps, and significantly longer life.



LEDs shown below with frosted globes.



Lamp	Watts/Volts	Hours	Lumens	Color
EX-212	4.2 Watts / 12VAC	10,000	35	2550K
EX-124	7.5 Watts / 24VAC	10,000	65	2550K



In addition to clear and frosted globes, xenon lamps are available with green, amber, blue, red, and violet colored globes.

Specifications

All plastic components comply with UL746C in respect to Ultraviolet Light and Water Absorption testing.



- Light Sources** include LEDs and xenon lamps
- Polycarbonate Globe** with flammability rating UL 94V-0
- Flexible Conductors** #12 AWG stranded and plated wire
- Two O-Rings** on each globe for weatherproof seal
- Sockets** permanently fastened to cable with sealant
- Insulation** is flexible PVC with flammability rating UL 94 HB

2 | TOKISTAR LIGHTING



EXBK - 12 - WW - F

How to Specify

Three key considerations in specifying an Exhibitor Lighting System are:

1) Socket Spacing

Consider viewing distance and perspective when deciding on socket spacing. Wider spacings (18"-24") are the best choice for most festooning applications. Closer spacings (6"-12") are appropriate for applications at closer viewing range.

2) Light Source

LEDs create a softer lighting effect and are the most energy-efficient choice. Since LEDs consume so little energy, they can run much greater distances from a single feed point. Xenon lamps will produce brighter distinct points of light.

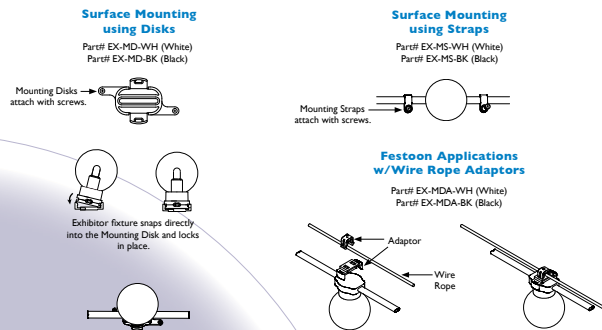
3) Globe Selection

Clear globes have excellent clarity and will emphasize the distinct points of incandescent or LED light. Frosted globes will diffuse light on their entire surface. Colored globes in combination with xenon lamps create vibrant color.

Cable / Socket Color		Socket Spacing		LED		Globe		
Code	Color	Code	Inches (mm)	Code	Color	Code	Globe Color	
BK	Black	6	6" (150 mm)	WW	Warm White	0.48W / 24VAC	C	Clear
WH	White	12	12" (300 mm)	WH	White	0.48W / 24VAC	F	Frosted
		18	18" (450 mm)	BL	Blue	0.48W / 24VAC	G	Green
		24	24" (600 mm)	GR	Green	0.48W / 24VAC	A	Amber
			(Custom Spacing is Available)	OR	Orange	0.48W / 24VAC	B	Blue
				PL	Purple	0.48W / 24VAC	R	Red
				RD	Red	0.48W / 24VAC	V	Violet
				YG	Yellow-Green	0.48W / 24VAC	M	Multi-Colors
					(Any Combination of Colors is Possible)			
				Xenon Lamp				
		212	2550K	4.2W / 12VAC				
		124	2500K	7.5W / 24VAC				

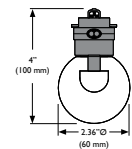
Mounting Options

Exhibitor Series can be surface mounted to structures using our mounting disks or straps. For festoon applications, our wire rope adaptor securely holds each socket in place to 1/16" or 1/8" wire rope.



TOKISTAR LIGHTING | 3

Sizes and Lengths



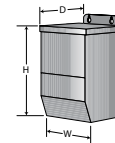
To minimize voltage drop and keep conductors safely within their ratings, do not exceed the maximum lengths shown for each independent fixture.

Socket Spacing	Maximum Run Lengths		
	LED	Xenon Lamps	
6" (150 mm)	250' (76 M)	24' (7 M)	32' (10 M)
12" (300 mm)	350' (106 M)	36' (11 M)	56' (17 M)
18" (450 mm)	426' (130 M)	45' (14 M)	72' (22 M)
24" (600 mm)	492' (150 M)	50' (15 M)	80' (24 M)

Transformers

Tokistar transformers operate from a 120 VAC/60 Hz input and are fully dimmable. They are provided in a Nema 3R enclosure suitable for wet locations. The secondary outputs are protected by circuit breakers.

Transformers should be installed in an accessible location. Magnetic transformers generate heat and must be installed in locations where there is free air circulation.

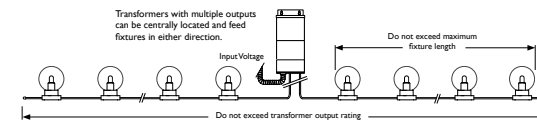


Consult factory for transformers with input voltages of 230 or 277 VAC. Sizes and weights shown are approximate and subject to change without notice.

T12 Series Transformers						
Number	Outputs	D	H	W	Weight	
T12-100	1 @ 100 Watt / 12 VAC	3.0"	9.0"	3.0"	5 lbs	
T12-150	1 @ 150 Watt / 12 VAC	3.0"	9.0"	3.0"	5 lbs	
T12-250	1 @ 250 Watt / 12 VAC	3.5"	9.5"	4.5"	8 lbs	
T12-300	1 @ 300 Watt / 12 VAC	3.5"	9.5"	4.5"	8 lbs	
T12-500	2 @ 250 Watt / 12 VAC	4.5"	10.5"	4.5"	12 lbs	
T12-600	2 @ 300 Watt / 12 VAC	4.5"	10.5"	4.5"	15 lbs	
T12-750	3 @ 250 Watt / 12 VAC	4.5"	10.5"	4.5"	15 lbs	
T12-1000	4 @ 250 Watt / 12 VAC	5.0"	11.5"	7.0"	28 lbs	
T12-1200	4 @ 300 Watt / 12 VAC	5.0"	11.5"	7.0"	28 lbs	

T24 Series Transformers						
Number	Outputs	D	H	W	Weight	
T24-100	1 @ 100 Watt / 24 VAC	3.0"	9.0"	3.0"	5 lbs	
T24-150	1 @ 150 Watt / 24 VAC	3.0"	9.0"	3.0"	5 lbs	
T24-250	1 @ 250 Watt / 24 VAC	3.5"	9.5"	4.5"	8 lbs	
T24-300	1 @ 300 Watt / 24 VAC	3.5"	9.5"	4.5"	8 lbs	
T24-500	1 @ 500 Watt / 24 VAC	4.5"	10.5"	4.5"	12 lbs	
T24-600	1 @ 600 Watt / 24 VAC	4.5"	10.5"	4.5"	15 lbs	
T24-750	2 @ 375 Watt / 24 VAC	4.5"	10.5"	4.5"	15 lbs	
T24-1000	2 @ 500 Watt / 24 VAC	5.0"	11.5"	7.0"	28 lbs	
T24-1200	2 @ 600 Watt / 24 VAC	5.0"	11.5"	7.0"	28 lbs	

The recommended maximum distance between the fixture and the transformer varies based on the load of each fixture and the size of secondary wire feeding the fixture. Electrical engineers and contractors can calculate these distances. Should you need guidance, consult the factory.



TOKISTAR® LIGHTING INC.

1015 E. Discovery Lane • Anaheim, CA 92801
Tel: 714.772.7005 • Fax: 714.772.7014 • Toll free in U.S.A.: 877.340.7833
E-mail: info@tokistar.com • Web site: www.tokistar.com

TYPE G

ST. LOUIS PREMIUM OUTLETS

ARCHITECTURAL REVIEW BOARD

PREMIUM OUTLETS

SIMON



WOODMONT OUTLETS

the COLLABORATIVE inc
ARCHITECTS | LANDSCAPE ARCHITECTS | INTERIOR DESIGNERS | PLANNERS

PKWM Parkway Square™ – Medium Housing Scale

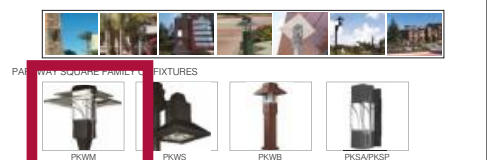
1	2	3	4	5	6			7	8
LUMINAIRE	HOOD	OPTICS	LAMP/BALLAST	DECORATIVE SCREEN	GENERAL	HOOD	SCREEN	COLOR	MOUNTING
PKWM									



PAKWAY SQUARE MEDIUM SCALE HOUSING



PKWM DESIGNER SSI MICROEMITTER TECHNOLOGY



- Four optical systems, including LED, horizontal, vertical, and indirect
- Features highly efficient, exclusive MicroEmitter™ technology
- Available with exclusive WiFi™ technology
- Wireless control system for 0-10VDC full range dimming control
- Programmable autonomous operation
- Three hood styles to configure a look in harmony with your architecture
- Six decorative screen options
- Wide variety of custom arm options
- Tool-less access
- EISA compliant
- IP65 rated for horizontal configurations and IP66 rated for vertical configurations
- Powder coat finish in 13 standard colors with a polymer primer sealer

JOB INFORMATION

TYPE _____

JOB NAME _____

LAMP (BY OTHERS) _____

CUSTOMER _____

DATE _____

Consult factory for any custom/modified products

APPROVALS _____

architectural arealighting | 16555 East Gale Ave. City of Industry | CA 91745 P 626.968.5666 | F 626.369.2695 www.aal.net | Copyright © 2012

PKWM Parkway Square™ – Medium Housing Scale

1	2	3	4	5	6			7	8
LUMINAIRE	HOOD	OPTICS	LAMP/BALLAST	DECORATIVE SCREEN	GENERAL	HOOD	SCREEN	COLOR	MOUNTING
PKWM									

1. LUMINAIRE

- PKWM Parkway Square Pedestrian (Medium) scale. Slips over a 4" open top square pole or 2 3/8" tenon.



ANG
Angled Hood
Horizontal Optics
HT: 30.5/37.5 mm
DIA: 23/28.4 mm
EPA: 3.18
WT: 57 lbs.



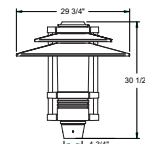
IND
Indirect Hood
(Underside finished in high reflectance white)
Vertical Optics
HT: 30.5/37.5 mm
DIA: 23/28.4 mm
EPA: 3.22
WT: 49 lbs.



STR
Straight Hood
Vertical Optics
HT: 30.5/37.5 mm
DIA: 29.75/36 mm
EPA: 3.21
WT: 63 lbs.



Double Hood
Vertical Optics
HT: 30.5/37.5 mm
DIA: 29.75/36 mm
EPA: 3.26
WT: 79 lbs.



3. OPTICS

- HORIZONTAL LED OPTICAL SYSTEM** – Available with ANG hood and LEDs only. Flat glass lens.
- T2 Horizontal LED optical system. IES Type 2 distribution.
 - T3 Horizontal LED optical system. IES Type 3 distribution.
 - T4 Horizontal LED optical system. IES Type 4 distribution.
 - T5 Horizontal LED optical system. IES Type 5 distribution.

- VERTICAL LED OPTICAL SYSTEM**
- VL3 Asymmetric distribution
 - VL5 Symmetric distribution

- HORIZONTAL OPTICAL SYSTEM** – Available with ANG hood only. Not available with LEDs. Flat glass lens.
- H2 Horizontal optical system. IES Type 2 distribution.
 - H3 Horizontal optical system. IES Type 3 distribution.
 - H4 Horizontal optical system. IES Type 4 distribution.
 - H5 Horizontal optical system. IES Type 5 distribution.

- VERTICAL OPTICAL SYSTEM** – Not available with IND or LEDs. Clear acrylic cylinder.
- GLA Vertical optical system. Frosted glass diffuser.
 - GR3 Vertical optical system. IES Type 3 glass refractor.
 - GR5 Vertical optical system. IES Type 5 glass refractor.

- INDIRECT OPTICAL SYSTEM** – Available with IND hood only. Not available with LEDs. Clear acrylic cylinder. Underside of hood is painted in high reflectance white.
- 3 Indirect reflector. IES Type 3 distribution.
 - 5 Indirect reflector. IES Type 5 distribution.

- BARE LAMP** – Available with IL system only. Lightly diffused acrylic cylinder.
- BLO Bare lamp system, only for induction lamp system.

JOB INFORMATION

TYPE _____

JOB NAME _____

LAMP (BY OTHERS) _____

CUSTOMER _____

DATE _____

Consult factory for any custom/modified products

APPROVALS _____

architectural arealighting | 16555 East Gale Ave. City of Industry | CA 91745 P 626.968.5666 | F 626.369.2695 www.aal.net | Copyright © 2012

PKWM Parkway Square™ – Medium Housing Scale

1	2	3	4	5	6			7	8
LUMINAIRE	HOOD	OPTICS	LAMP/BALLAST	DECORATIVE SCREEN	GENERAL	HOOD	SCREEN	COLOR	MOUNTING
PKWM									

4. LAMP/BALLAST

- S5LED-BW 42 light emitting diode array. Bright white (5100K). Class 2, 120 thru 277 volt. **VLS & VLS only.**
- 60LED-WW MicroEmitter™ 60 light emitting diode array. Warm white (3500K). Class 1, 120 thru 277 volt. **Horizontal LED only.**
- 60LED-BW MicroEmitter™ 60 light emitting diode array. Bright white (5100K). Class 1, 120 thru 277 volt. **Horizontal LED only.**
- 70MH 70 watt metal halide 120/208/240/277 volt ballast. Use medium base, ED-17 lamp.
- 70MHER 70 watt electronic metal halide 120 thru 277 volt ballast. Use medium base, ED-17 lamp.
- 70MHT6 70 watt metal halide 120/277/347 volt ballast. Use G12 base, T6 ceramic lamp.
- 70MHT6EB 70 watt electronic metal halide 120 thru 277 volt ballast. Use G12 base, T6 ceramic lamp.
- 100MH 100 watt metal halide 120/208/240/277 volt ballast. Use medium base, ED-17 lamp.
- 100MHER 100 watt electronic metal halide 120 thru 277 volt ballast. Use medium base, ED-17 lamp.
- 150PSMH Pulse start 150 watt metal halide 120/208/240/277 volt ballast. Use medium base, ED-17 lamp.
- 150PSMHT6 Pulse start 150 watt metal halide 120/277 volt ballast. Use G12 base, T6 ceramic lamp.
- 150MHER 150 watt electronic metal halide 120 or 277 volt ballast. Use medium base, ED-17 lamp.
- 150MHT6EB 150 watt electronic metal halide 120 or 277 volt ballast. Use G12 base, T6 ceramic lamp.
- 70HPS 70 watt high pressure sodium 120/208/240/277 volt ballast. Use medium base, ED-17 lamp.
- 100HPS 100 watt high pressure sodium 120/208/240/277 volt ballast. Use medium base, ED-17 lamp.
- 150HPS 150 watt high pressure sodium 120/208/240/277 volt ballast. Use medium base, ED-17 lamp.
- ILB5 85 watt induction lamp system, 120, 208, 240 or 277 volt. -25°C min. start temp. Available in bare lamp configuration (BLO) with LED lens only.
- CF Compact fluorescent electronic 120 thru 277 volt ballast. Use GX24q base, 26, 32 or 42 watt lamp. Not available with horizontal or LED optics. -18° C min start temp. Specify wattage.
- 140CO 140 watt electronic CosmoPoles™ 120 or 208 thru 277 volt ballast. Use PG212 base, CosmoPoles™ lamp. Not available with horizontal or LED optics.

All fixtures prepared for 277 volts unless specified. Lamps not included (except IL and LED options). All applicable ballasts are EISA compliant. Mini MasterColor® is a registered trademark and CosmoPoles™ is a trademark of Philips Lighting®.

JOB INFORMATION

TYPE _____

JOB NAME _____

LAMP (BY OTHERS) _____

CUSTOMER _____

DATE _____

Consult factory for any custom/modified products

APPROVALS _____

architectural arealighting | 16555 East Gale Ave. City of Industry | CA 91745 P 626.968.5666 | F 626.369.2695 www.aal.net | Copyright © 2012

PKWM Parkway Square™ – Medium Housing Scale

1	2	3	4	5	6			7	8
LUMINAIRE	HOOD	OPTICS	LAMP/BALLAST	DECORATIVE SCREEN	GENERAL	HOOD	SCREEN	COLOR	MOUNTING
PKWM									

5. DECORATIVE SCREENS (OPTIONAL)

Painted to match fixture. Also available in stainless steel or copper. Not available with horizontal or LED optics.



- DSIN Finely design painted to match fixture.
- DSOF Orbit design painted to match fixture.
- DSWH Wheel design painted to match fixture.
- DSTR Tre design painted to match fixture.
- DSSH Shaker design painted to match fixture.
- DSCS Custom design painted to match fixture.

6. OPTIONS

- GENERAL**
- WRHM In fixtures wireless control module. *For use with LED only.
 - LULS Upper lens shield above the hood. Reduces light above hood.
 - TEN 2 3/8" O.D. x 4" long tenon. Required for all poles, except for PS4, GLA only.
 - TEN23 Tenon adaptor slips over a 2 3/8" O.D. x 4" long tenon. Required for poles by others or used in conjunction with the TEN pole option by AAL. GLA only.
 - LDL Lightly diffused lens.
 - 347 120/240/347 volt ballast for HID only, except 50MH and 50HPS.
- HOOD**
- COP Brushed copper hood
 - STS Stainless steel hood
- DECORATIVE SCREEN**
- CFR Screen in brushed copper.
 - SSP Screen in brushed stainless steel.

7. COLOR

- AWI Arctic White
- BLK Black
- MTB Matte Black
- DGN Dark Green
- DBZ Dark Bronze
- WRZ Weathered Bronze
- BRM Metallic Bronze
- VBL Verde Blue
- CRT Corten
- MAL Matte Aluminum
- MDG Medium Grey
- ATG Antique Green
- LGY Light Grey
- SPP Salt and Pepper (premium)
- SPF Sealcoat (premium)
- WCP Weathered Copper (premium)
- SHK Shamrock (premium)
- RAL COLOR Provide a RAL 4 digit color number
- CUSTOM COLOR Please provide a color chip for matching

JOB INFORMATION

TYPE _____

JOB NAME _____

LAMP (BY OTHERS) _____

CUSTOMER _____

DATE _____

Consult factory for any custom/modified products

APPROVALS _____

architectural arealighting | 16555 East Gale Ave. City of Industry | CA 91745 P 626.968.5666 | F 626.369.2695 www.aal.net | Copyright © 2012

TYPE H1 + H2

ST. LOUIS PREMIUM OUTLETS ARCHITECTURAL REVIEW BOARD

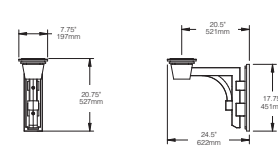
PREMIUM OUTLETS SIMON

WOODMONT OUTLETS the COLLABORATIVE inc ARCHITECTS | LANDSCAPE ARCHITECTS | INTERIOR DESIGNERS | PLANNERS

PKWM Parkway Square™ – Medium Housing Scale

1	2	3	4	5	6		7	8
LUMINAIRE	HOOD	OPTICS	LAMP/BALLAST	DECORATIVE SCREEN	GENERAL	HOOD SCREEN	COLOR	MOUNTING
PKWM								

- 8. MOUNTING**
- WALL MOUNT – Mounting plate included. Hardware by others.**
- PSWM-TU Fixture above with arm mounted up.
 - PSWM-TD Fixture above with arm mounted down.
 - PSWM-BU Fixture below with arm mounted up. Not available with indirect.
 - PSWM-BD Fixture below with arm mounted down. Not available with indirect.
- POLE MOUNT – Mounts to the side of 4" O.D. pole**
- PSA-TU Fixture above with arm mounted up.
 - PSA-TD Fixture above with arm mounted down.
 - PSA-BU Fixture below with arm mounted up. Not available with indirect.
 - PSA-BD Fixture below with arm mounted down. Not available with indirect.



EPA: 1.24
WEIGHT: 12 lbs

JOB INFORMATION

TYPE _____

JOB NAME _____

LAMP (BY OTHERS) _____

CUSTOMER _____

DATE _____

Consult factory for any custom/modified products

APPROVALS _____

architectural arealighting
16555 East Gale Ave.
City of Industry | CA 91745
P 626.968.5666 | F 626.369.2695
www.aal.net | Copyright © 2012

PAGE 5 OF 6

PKWM Parkway Square™ – Medium Housing Scale

1	2	3	4	5	6		7	8
LUMINAIRE	HOOD	OPTICS	LAMP/BALLAST	DECORATIVE SCREEN	GENERAL	HOOD SCREEN	COLOR	MOUNTING
PKWM								

HOUSING
Parkway Square housings shall be cast aluminum A356 alloy, free of any porosity, foreign materials, or cosmetic fillers. The driver shall be mounted internally and accessed by loosening four captive bolts and lifting away the lamp compartment. The lamp compartment shall be sealed with a molded silicone gasket. All lenses shall be molded, seamless high impact lighting grade acrylic. The lens shall be sealed to the housing with a molded silicone gasket on the top and bottom. The vertical struts shall be cast aluminum and painted to match the fixture. All internal and external hardware shall be stainless steel. The fixture shall slip over a 4" x 100mm square post top and secured with four stainless steel set screws. The hood shall be formed from 5052 H32 aluminum, 304 stainless steel or 110 copper. The underside of the hood shall be finished in a high reflectance white powder coating. Copper hoods shall be unfinished to develop a patina.

The horizontal optical system door shall be cast aluminum painted to match the fixture. The internal horizontal optical system shall be sealed from the outer housing with a silicone gasket. The tempered glass lens shall be sealed to the housing with a silicone gasket. A pair of stainless steel latches shall release the door to allow access to the optical system. The horizontal optical system shall be rotatable on 90° centers for orienting the light distribution. The horizontal optical system shall meet ANSI IES standards for full cutoff reflector systems when using arm in the BU or BD configuration.

MICROEMITTER™ REFLECTOR
Precision injection molded, high specular reflectors shall be positioned to achieve directional control toward desired task. Secondary reflectors shall have a concave, specular medium hammerstone finish that shall be used to redirect light downward. No fasteners shall be placed on the reflective surface. The entire assembly shall fasten to the housing as a one-piece module and shall feature wiring quick-connects for easy installation. MicroEmitters™ shall be field replaceable and shall be driven at 350mA current.

ELECTRICAL
The driver shall be integral to the fixture, mounted on a prewired module with a quick disconnect plug, and shall be removable by loosening four screws. The driver shall accept 120 thru 277 volts input, with output drive current of 350ma, and shall be wired at the factory for 277 volts, unless specified. Standard color temperatures for LEDs shall be 3500K and 5100K. Rated luminous efficacy of luminaires shall be >40 lm/W, with rated light output of >2960 for 5100K LED. The vertical LED configuration shall have a self contained light engine consisting of a diode array mounted to a die-cast aluminum heat sink and sealed behind an injection molded and optically clear lens.

INSTALLATION & MOUNTING
The PKWM shall be factory supplied as a complete, prewired assembly. The fixture shall slip over a 4" open top pole or 2 3/8" x 100mm and secured and leveled with 4 stainless steel set screws or arm mounted to the side 4" x 100mm round or square pole.

FINISH
Fixture finish shall consist of a five stage pretreatment regimen with a polymer primer sealer, oven dry off, and top coated with a thermoset super TGIC polyester powder coat finish. The finish shall meet the AAMA 605.2 performance specification which includes passing a 3000 hour salt spray test for corrosion resistance.

CERTIFICATION
The fixture is listed with ETL or outdoor, wet location use and shall conform to UL1598 and Canadian CSA std. C22.2 No.9. Ip65 rated for horizontal configurations and Ip66 rated for vertical configurations.

WARRANTY
Fixture is warranted for three years, with the exception of Parkway Square MicroEmitter™ LED models. Parkway Square MicroEmitter™ LED, including housing, LEDs and electrical components, are warranted for five years. Driver components carry the driver manufacturer's limited warranty. Any unauthorized return, repair, replacement or modification of the product(s) shall void this warranty. This warranty applies only to the use of the product(s) as intended by AAL and does not cover any misapplication or misuse of said product(s), or installation in hazardous or corrosive environments. Contact AAL for complete warranty language, exceptions, and limitations.

JOB INFORMATION

TYPE _____

JOB NAME _____

LAMP (BY OTHERS) _____

CUSTOMER _____

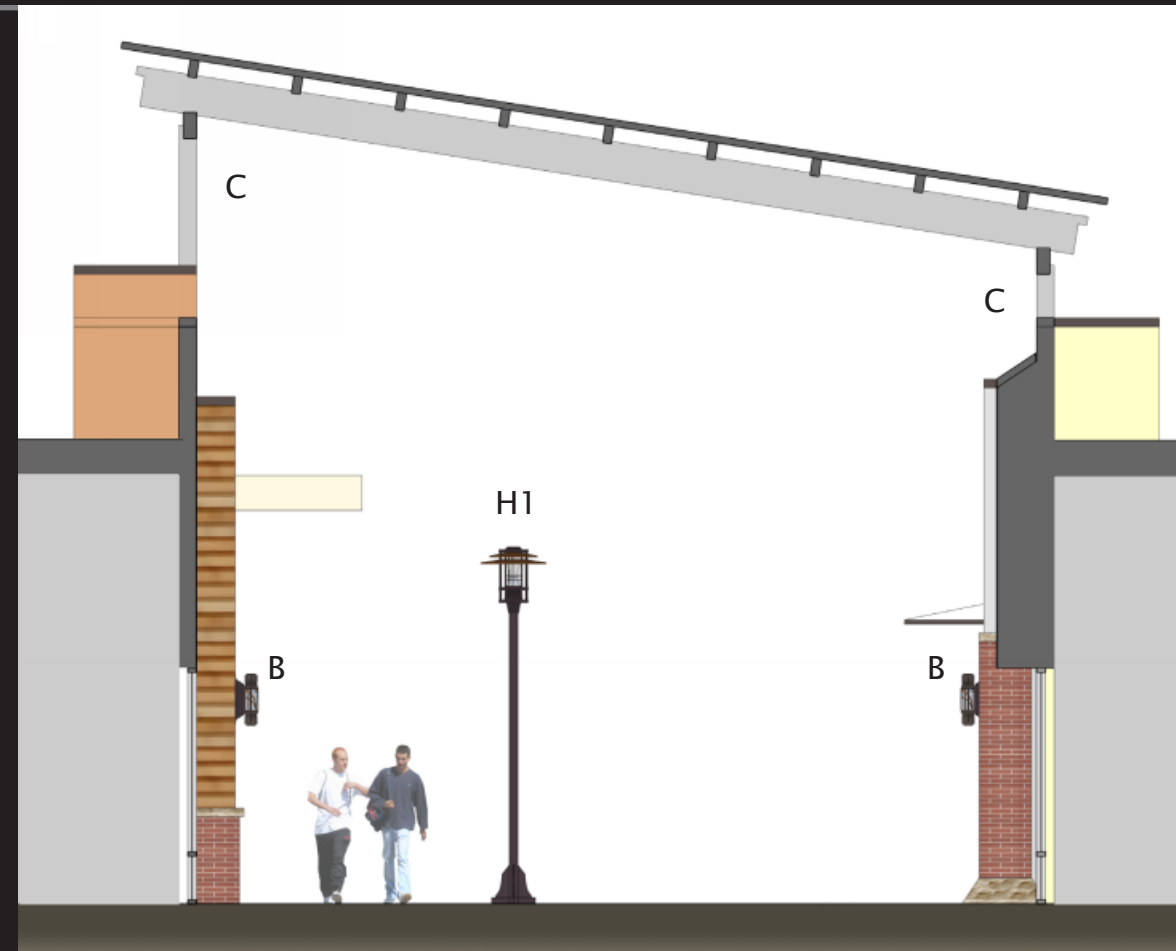
DATE _____

Consult factory for any custom/modified products

APPROVALS _____

architectural arealighting
16555 East Gale Ave.
City of Industry | CA 91745
P 626.968.5666 | F 626.369.2695
www.aal.net | Copyright © 2012

PAGE 6 OF 6



TYPE H1 + H2

GALLERY SECTION

ST. LOUIS PREMIUM OUTLETS
ARCHITECTURAL REVIEW BOARD

PREMIUM OUTLETS
SIMON



WOODMONT OUTLETS

the COLLABORATIVE inc
ARCHITECTS | LANDSCAPE ARCHITECTS | INTERIOR DESIGNERS | PLANNERS

HYDREL
An Acuity Brands Company

**9100 SERIES
HID 150 WATT MAX.
IN-GRADE LUMINAIRE**

DESCRIPTION:
The 9100 Series HID flush mounted up-lights are designed for flush mounting in planting areas or in concrete, and are used for illuminating building facades, walls, trees, and similar applications. The lamp module and power modules are factory sealed, thermally protected, and connected by submersible rated connectors.

SPECIFICATIONS:
DOOR MATERIAL: Cast aluminum or bronze that locks the lamp housing into the Rough-In Section with a single tamperproof stainless steel fastener.

ROUGH-IN SECTION: Injection molded ABS, U.V. stabilized, impact and corrosion resistant for use in all types of environments.

LAMP MODULE HOUSING: Stainless steel, sealed and purged of all moisture to 100°F (38°C). Electrical access to lamp module is done through submersible rated connector. **THERMALLY PROTECTED.**

LAMP TYPE: See ordering guide. **LAMP INCLUDED.**

VOLTAGE: See ordering guide.

DISTRIBUTIONS: The Spot Reflector is specular spun aluminum. The Wide Flood Reflector is diffuse spun aluminum and the Wall Wash Reflector is diffuse hydroformed aluminum. The Spot and Flood Reflector assemblies have 15° of internal lamp tilt on a 360° axis of rotation. Lamp tilt is not used in the Wall Wash units. The lenses are clear tempered flat glass. Convex lenses are available.

THE COMMON LIGHT DISTRIBUTIONS ARE:
SPOT = 7° spread; WFL = 140° spread;
NFL = 30° spread; MFL = 50° spread;
WW = 10 to 1 Uniformity Ratio
Reflectorized lamp distributions vary depending on manufacturer. Check Photometric Sheets.

POWER MODULE: Sealed unit encapsulated in an engineered composite resin to eliminate all water entry.

CONDUIT ENTRIES: 3/4" NPT are available in the cast aluminum integral Junction Box. Suitable for thru-branch wiring. This box has 24 cubic inches of volume.

LISTING: U.L., CSA, NEMKO

NOTE: HYDREL RESERVES THE RIGHT TO MODIFY SPECIFICATION WITHOUT NOTICE. Any dimension on this sheet is to be assumed as a reference dimension. * based on information purposes only. It does not govern manufacturing or inspection requirements. * (ANSI Y14.5-1973)

©2010 Acuity Brands Lighting, Inc.
Revised 11/3/10
9100 HID 150

20660 Nordhoff St., Suite B
Chatsworth, CA 91311
Phone: 866.533.9991
Fax: 866.533.5291
www.hydel.com

HYDREL
An Acuity Brands Company

9100 ORDERING INFORMATION
60 Hz Application
Choose the boldface catalog nomenclature that best suits your needs. *Designates required selection.

PART NO.

EXAMPLE: 9100 A 150CMT6 MVOLT MFL FLC 34B GEB LP

***Model**
 9100 Round

***Voltage**
 120
 208
 220
 240
 277
 347
 MVOLT*

***Lens**
 FLC Flat Lens Clear
 FLCS Flat Lens
 FLC10 5° Axial Spread
 FL Flat Lens Frosted
 FLCAS Flat Lens Clear Anti-Slip
 FLCASAS Flat Lens 5° Axial Spread - Anti-Slip
 CLC Convex Lens Clear

***Material**
 A Aluminum
 B Bronze

***LampType**
MFL
 35CMT6 T6, G-12 base
 70CMT6 T6, G-12 base
 150CMT6 T6, G-12 base
 50M* E17, med. base
 70M* E17, med. base
 70CM* E17, med. base
 100M E17, med. base
 100CM E17, med. base
 150M E17, med. base
 150CM E17, med. base
 150M E17, med. base
 P3870CM* PAR38, med. base
 P38100M PAR38, med. base
 P38100CM PAR38, med. base
 P38150M PAR38, med. base
 P38150CM PAR38, med. base
HPS
 50S* E17, med. base
 70S E17, med. base
 100S E17, med. base
 150S E17, med. base

***Distribution**
 SP Spot
 MFL Medium Flood
 NFL Narrow Flood
 WFL Wide Flood
 WWL* Wall Wash Reflector, 5° spread lens
 FL Flood (PAR lamps only)

***Conduit**
 3/4" NPT Bottom

***Lamp**
 LP Lamp installed

Accessories
Internal
 MSR Modular support ring
 IHL Internal honeycomb louver
 ISS* Internal source shield
 WWL* Wall Wash Louver
External
 GS* Glare Shield
 RG* Rock Guard
 PC21 35 cu. in. potting compound

Finish*
 BL Black
 BZ Bronze
 DDB Dark Bronze
 DNA Natural Alum.
 GN Green
 GR Gray
 SNO Sand
 STG Steel Gray
 TVG Terra Verde Green
 WH White
 CF Custom Finish

Options
 GEB Electronic Ballast

Listing
 IEC

Consisting of:
RIS Rough-In Section
ACL Lamp Module
HSL Ballast Module

©2010 Acuity Brands Lighting, Inc.
Revised 11/3/10
9100 HID 150

20660 Nordhoff St., Suite B
Chatsworth, CA 91311
Phone: 866.533.9991
Fax: 866.533.5291
www.hydel.com

HYDREL
An Acuity Brands Company

9100 ORDERING INFORMATION
50 Hz Application
Choose the boldface catalog nomenclature that best suits your needs. *Designates required selection.

PART NO.

EXAMPLE: 9100 A 150CMT6 22050Hz SP FLC 16B ISS GEB LP IEC

***Model**
 9100 Round

***Voltage**
 22050Hz
 23050Hz
 24050Hz
 MVOLT*

***Conduit**
 16B PG16 Bottom
 20B M20 Bottom

***Lamp**
 LP Lamp installed

***Material**
 A Aluminum
 B Bronze

***Distribution**
 SP Spot
 MFL Medium Flood
 WFL Wide Flood
 NFL Narrow Flood
 WWL* Wall Wash Reflector, 5° spread lens

Accessories
Internal
 MSR Modular support ring
 IHL Internal honeycomb louver
 ISS* Internal source shield
 WWL* Wall Wash Louver
External
 GS* Glare Shield
 RG* Rock Guard
 PC21 35 cu. in. potting compound

***LampType**
HID
 35CMT6 T6, G-12 base
 70CMT6 T6, G-12 base
 150CMT6 T6, G-12 base
 70M E27 base
 70CM E27 base
 100M E27 base
 100CM E27 base
 150M E27 base
 150CM E27 base
HPS
 50S E27 base
 70S E27 base
 100S E27 base

***Lens**
 FLC Flat Lens Clear
 FLCS Flat Lens 5° Axial Spread
 FLCASAS Flat Lens 5° Axial Spread - Anti-Slip
 FLC10 Flat Lens 10° Tilt
 FL Flat Lens Frosted
 FLCAS Flat Lens Clear Anti-Slip
 CLC Convex Lens Clear

Options
 GEB Electronic Ballast

Listing
 IEC

Consisting of:
RIS Rough-In Section
ACL Lamp Module
HSL Transformer Module/
Power Cord

©2010 Acuity Brands Lighting, Inc.
Revised 11/3/10
9100 HID 150

20660 Nordhoff St., Suite B
Chatsworth, CA 91311
Phone: 866.533.9991
Fax: 866.533.5291
www.hydel.com

TYPE J

ST. LOUIS PREMIUM OUTLETS
ARCHITECTURAL REVIEW BOARD

PREMIUM OUTLETS
SIMON

WOODMONT OUTLETS
the COLLABORATIVE inc
ARCHITECTS | LANDSCAPE ARCHITECTS | INTERIOR DESIGNERS | PLANNERS

STERNBERG

Ornamental Bollards

12-608

730LB PRAIRIE LIGHTED BOLLARD

SPECIFICATIONS

GENERAL

The Model 730LB decorative lighted bollard shall be aluminum, one-piece construction. The square aluminum shaft shall be constructed with decorative cast window grilles and overhang roof cap. The Model shall be Sternberg Lighting #730LB lighted bollard or #730LB-QR quick release lighted bollard.

CONSTRUCTION

The bollard housing shaft shall be 7" square having a wall thickness of 1/8" and made of ASTM 6061 extruded aluminum and tempered to a T6 condition. The bollard features four 6" wide windows with cast tree design grille work. The cast 12" square roof shall cantilever the fixture body and have a solid aluminum soffit. The assembly comes standard with a 1-piece white lens made of 1/4" thick square heavy-duty acrylic for vandal resistance. Optional lenses are available. The internal anchor base shall be 6 1/2" square and made of heavy wall, 356 alloy cast aluminum and shall be vertically fastened to bollard housing. It shall have a 1/2" thick floor cast as an integral part of the base. The overall height of the bollard shall be 48". (For other heights, consult factory.)

ELECTRICAL

All electrical components shall be U.L. approved. H.I.D. ballasts shall be high power factor with lamp starting down to -30 degrees C. Medium base porcelain sockets to be 4K-V rated. The ballast/socket assembly shall be pre-wired. Optional compact fluorescent (PL) ballasts shall be instant start electronic with a starting temperature of down to 0 degrees F. They shall have a 4-pin socket and support quad tube and triple tube lamps. Ballasts shall be DOE EISA compliant.

QUICK RELEASE MOUNTING (Optional)

The Model 730LB-QR shall have a quick release option which allows quick removal of the bollard for convenience or emergency access. The bollard portion shall be made of ASTM 6061 aluminum extrusion and shall have a keyway and flexible connection system for securing to bollard. The bollard shall have a mated extension and anti-rotation key and padlock slot. The quick release system shall allow for a flush pavement installation after temporary bollard removal.

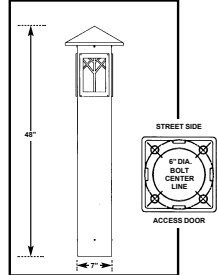
FINISH

Prior to coating, each assembly shall be chemically cleaned and etched in a 5-stage washing system which includes alkali cleaning, rinsing, phosphoric etching, reverse osmosis water rinsing, and non-chrome sealing to ensure corrosion resistance and excellent adhesion for the finish coating. The finish coating shall be electrostatically applied semi-gloss, super durable polyester powder baked at 400 degrees for a durable and superior, color retentive finish. Our optional antique Verde Green finish and Swedish Iron finish are hand brushed using a 3-step process. The total assembly shall be wrapped in shockproof wrapping or fully enclosed in corrugated cartons.

INSTALLATION

Four, hot-dipped galvanized "L" type anchor bolts shall be provided with the post for non-quick release bollard anchorage. Quick release anchorage requires no anchor bolts. Bollard will be provided with a grounding stud mounted on the base flange.

WARRANTY Five-year limited warranty. See product and finish warranty guide for details.



See installation template for exact door position.

BUILDING A PART NUMBER **PART NUMBER SELECTIONS**

BOLLARD MODEL	OPTIONAL CHAIN LOOP	OPTIONS	LIGHT SOURCE BALLAST WATTAGE/VOLTS	FINISH	BALLASTS	LAMPS	FINISHES STANDARD	FINISHES CUSTOM
730LB			700HPS120 / VGC		35SPS 100HPS 100HPS 500HP 700HP 1000HP	HPS50MED HPS100MED HPS150MED MPS100MED MPS150MED PLT25 PLT32 PLT42	SWT Black Textured BK Black VG Verde Green PGT Park Green Textured PG Park Green ABZT Architectural Medium Bronze Textured ABZ Architectural Medium Bronze SI Swedish Iron DB Dark Bronze Textured CB Custom Match	OWGT Old World Gray Textured OWG Old World Gray WH White Textured WH White CV Copper Vein WBK Weathered Black WBR Weathered Brown CD Cedar RT Rust OI Old Iron TI Tin Stone CM Custom Match

MODELS*
 • 730LB
 • 730LB-QR
 *NOTE: For custom heights, designate height after bollard model.
 Example: 730LB-42"

VOLTAGES
 • 120
 • 208
 • 240
 • 277
 • 480
 • MULTI (120-277)
 ** TO ORDER CHAIN: Specify total length of chain required for project.

OPTIONAL CHAIN LOOP**
 • CL1 Chain Loop
 • CL2 Chain Loop 180"

OPTIONS
 • PEC1 Photocell-Bimetal 120 Volt Holder: 208, 240, 480 Volt
 • PEC2 Photocell-Bimetal 208-277 Volt
 • PEC1-E Photocell-Electronic 120 Volt
 • PEC2-E Photocell-Electronic 208-277 Volt
 • FRS Single Fuse and Holder 120-277 Volt
 • LAMPS: Select from List (120-277)
 • FHD Dual Fuse and Holder: 208, 240, 480 Volt
 • GFI Ground Fault Interrupter Duplex Outlet
 • LAMPS: Select from List (120-277)



555 Lawrence Ave. Roseelle, IL 60172 • 847-588-3400 • Fax 847-588-3440
 www.sternberglighting.com Email: info@sternberglighting.com 1-11

HYDREL
 An Acuity Brands Company

IP68 4M

4421 BASE OR YOKE MOUNT

LINE VOLTAGE FOUNTAIN FIXTURE

The 4421 series is ideal for shallow pool installations. Designed for the 120V T-4 mini-can tungsten halogen (quartz) lamp, 500W Max. It is compact in size with an over all height of 8 3/8". The standard unit employs a medium-angle flood pattern reflector. The reflector is chrome plated spun copper.

FEATURES & SPECIFICATIONS

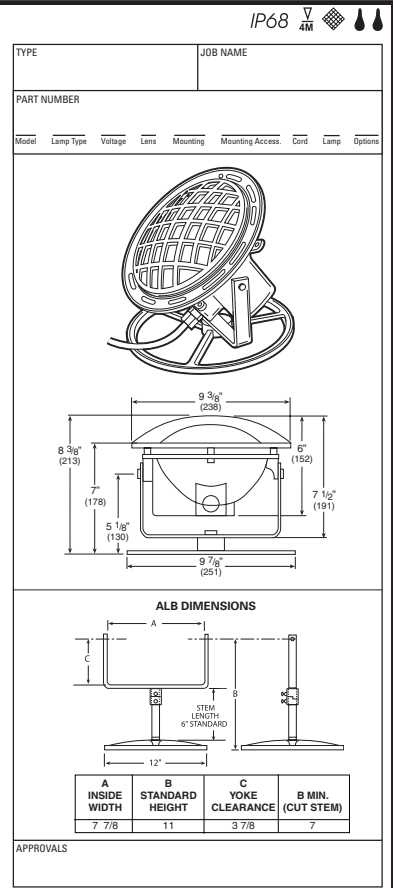
FIXTURE HOUSING & ROCK GUARD: Heavy wall cast bronze construction. Natural bronze finish.
LAMP: 500W Max., T-4 mini-can.
SOCKET: Mini-can base type with 200°C insulated leads.
DISTRIBUTION: Reflector is parabolic chrome plated spun copper.
LENS: 7 9/16" diameter convex clear tempered heat resistant glass.

MOUNTING: ALB custom base enables underwater lighting fixtures to be mounted 2" below the water level regardless of the depth of the fountain. This is achieved by securing the base in 3 places and cutting a length of 3/4" red brass pipe (threaded on one end) to the desired size. The locking mechanism allows you to remove the fixture for re-lamping without upsetting the fixture adjustment.
RISER: RSR6 if no length specified and ALB is chosen. 4"-24" Riser stem, available in 2" increments.
GASKET: Single-piece molded U-shaped silicone.

CORD: Minimum of 10' of #16-3ST submersible rated cord. Cord entrance is brass, water-tight seal and epoxy encapsulated. **Cord length must be specified.**
FACTORY LEAK TESTED: Fixtures are tested at 10 PSI (0.70kg/cm²) internal pressure while totally submerged in water.
LOW WATER CUT-OFF: Temperature sensing low water cut-off standard.

FASTENERS: Stainless steel.
LISTING: U.L. C.S.A.

NOTE: HYDREL RESERVES THE RIGHT TO MODIFY SPECIFICATION WITHOUT NOTICE. Any dimension on this sheet is to be assumed as a reference dimension. *Used for information purposes only. It does not govern manufacturing or inspection requirements.* (ANSI Y14.5-1975)



APPROVALS

A	B	C	B MIN.
INSIDE WIDTH	STANDARD HEIGHT	YOKE CLEARANCE	(CUT STEM)
7 7/8"	11"	3 7/8"	7"

HYDREL
 An Acuity Brands Company

IP68 4M

4421 ORDERING INFORMATION

80 Hz Application
 Choose the boldface catalog nomenclature that best suits your needs.

EXAMPLE:

4421	500Q	120	CLC	BM	ALB RSR6	CSL10	LPI	CSA
Model	Voltage	Lens	Mounting	Mounting Acc.†	Lamp	LPI Lamp	Listing	Option
<input type="checkbox"/> 4421	<input type="checkbox"/> 120	<input type="checkbox"/> CLC [‡] Convex Lens Clear	<input type="checkbox"/> BM Base Mt Yoke Mt <input type="checkbox"/> YM Yoke Mt <input type="checkbox"/> ALB Adjustable Locking Base	<input type="checkbox"/> RSR 4"-24" Riser stem available in 2" increments	<input type="checkbox"/> LPI Lamp Included	<input type="checkbox"/> LPI Lamp Included	<input type="checkbox"/> CSA Canadian Standard Association	

Lamp Type	Cord Set Length
<input type="checkbox"/> 1000 T4 MC <input type="checkbox"/> 1500 T4 MC <input type="checkbox"/> 2500 T4 MC <input type="checkbox"/> 4000 T4 MC <input type="checkbox"/> 5000 T4 MC	<input type="checkbox"/> CSL 10'-120' of cord available in 5' increments

Notes:
 † 500Q will be used if no lamp is chosen.
 ‡ CLC will be used if no lens is chosen.
 § Mounting Accessories are only available with BM.
 ¶ RSR6 will be used if no riser length is specified and ALB is chosen.

©2010 Acuity Brands Lighting, Inc. 11/11/10
 20660 Nordhoff St., Suite B Chatsworth, CA 91311
 Phone: 866.533.5291 Fax: 866.533.5291 www.hydel.com

TYPE K

TYPE L

