



690 Chesterfield Pkwy W • Chesterfield MO 63017-0760
Phone: 636-537-4000 • Fax 636-537-4798 • www.chesterfield.mo.us

Planning Commission Staff Report

Project Type: Site Development Section Plan

Meeting Date: March 8, 2010

From: Annissa McCaskill-Clay, AICP
Lead Senior Planner

Location: 18321 Paul Haglin Drive

Applicant: Civil Engineering Design Consultants

Description: **Wings Corporate Estates, Lot 19:** Site Development Section Plan Architectural Elevations, Landscape Plan, and Lighting Plan for a 1.4 acre tract of land zoned PI Planned Industrial District, located at the north side of Paul Haglin Drive, east of its intersection with Eatherton Road.

PROPOSAL SUMMARY

Civil Engineering Design Consultants and David Dial Architects, on behalf of D.F. Adams & Associates, Inc. have submitted a Site Development Section Plan, Architectural Elevations, Landscape Plan, and Lighting Plan for the above-referenced project. The request is to construct a 17,000 square foot office/warehouse building, to be located on Lot 19 of Wings Corporate Estates. The exterior building materials are proposed to be concrete masonry, brick veneer, tinted glass and architectural shingles. The Department of Planning and Public Works has reviewed this request and submits the following report.

HISTORY OF THE SUBJECT SITE

Wings Corporate Estates was originally zoned "NU" Non-Urban prior to the incorporation of the City of Chesterfield. The entry to the development, Precision Properties, was zoned to "PI" Planned Industrial on February 4, 2004 via City of Chesterfield Ordinance 2066, with a Site Development Plan for the site being subsequently approved on July 26, 2004. On February 6, 2006, Ordinance 2237 changed the zoning of a 36.6 acre "NU" Non-Urban District-zoned parcel to "PI" Planned Industrial District. The City of Chesterfield approved the Site Development Concept Plan for Wings Corporate Estates on September 11, 2006. The Record Plat for the development, consisting of 21 lots, was approved on February 4, 2008.

LAND USE AND ZONING OF SURROUNDING PROPERTIES

Direction	Land Use Category	Zoning
North	Low-Intensity Industrial	“PI” Planned Industrial
South	Low –Intensity Industrial Airport	“NU” Non-Urban ”M3” Planned Industrial
East	Low Intensity Industrial	“PI” Planned Industrial
West	Low Intensity Industrial	“PI” Planned Industrial



STAFF ANALYSIS

Comprehensive Plan and Zoning

The subject site is located within Ward 4 of the City of Chesterfield. The Comprehensive Plan designates this area as Low-Intensity Industrial. Areas with this designation are appropriate for manufacturing, fabrication, assembly, processing, distribution, warehousing and/or storage. Lot 19 was reviewed against and adheres to the requirements of City of Chesterfield Ordinance 2237 and all applicable Zoning Ordinance Requirements.

Architectural Elevations

The project was reviewed by the Architectural Review Board on December 17, 2009. The board passed a motion to forward the project to Planning Commission for approval as presented with a recommendation that the decorative light fixtures be approved by the Planning Commission by a vote of 4-0. A discussion of the fixtures referenced by the Board is discussed under “Lighting.”

Landscaping

The Landscape Plan submitted shows a mixture of deciduous and evergreen trees and shrubs throughout the site. Additionally, it shows the bioswale for the site will be planted with a variety of native plants along the site’s frontage on Paul Haglin Drive. The Plan meets all requirements of the

City of Chesterfield Tree Preservation and Landscape Requirements. The City Arborist has reviewed the Landscape Plan and had no additional comments.

Lighting

The Lighting Plan submitted in support of the project shows fully shielded, flat lens decorative light fixtures which are directed down as is required by the City of Chesterfield Lighting Ordinance. The Architectural Elevations feature decorative gas sconces which are not fully shielded as required. However, the Lighting Ordinance states that "The Planning Commission may approve decorative light fixtures as an alternative to shielded fixtures when it can be proven that there will be no offsite glare light trespass in excess of .5 foot candle and the proposed fixture will improve the appearance of the site." The photometric levels of all proposed lighting are within the required range and there is no offsite light trespass created. The location of the gas sconces are highlighted in yellow on the lighting plan. Cut sheets for all lighting fixtures have also been included for your review.

DEPARTMENTAL INPUT

Staff has reviewed the Site Development Section Plan, Architectural Elevations, Landscape Plan, and Lighting Plan and has found the application in compliance with City of Chesterfield Ordinance 2237 and all other applicable Zoning Ordinance Requirements. Staff requests action on Wings Corporate Estates, Lot 19.

MOTION

The following options are provided to the Planning Commission for consideration relative to this application:

- 1) "I move to approve (or deny) the Site Development Section Plan, Architectural Elevations, Landscape Plan, and Lighting Plan with decorative light fixture for Wing Corporate Estates, Lot 19."
- 2) "I move to approve the Site Development Section Plan, Architectural Elevations, Landscape Plan, and Lighting Plan with decorative light fixture for Wing Corporate Estates, Lot 19, with the following conditions..." (Conditions may be added, eliminated, altered or modified).

Respectfully Submitted,



Annissa McCaskill-Clay, AICP
Lead Senior Planner

Cc: City Administrator
City Attorney
Department of Planning and Public Works

Attachments: Site Development Plan
Landscape Plan
Lighting Plan
Architectural Elevations
Lighting Cut Sheets



Douglas A. DeLong, Landscape Architect LA-81
 1/19/10
 Consultants:

Wings Corporate Estates Lot 19 Chesterfield, MO

Dial Architects

Revisions:

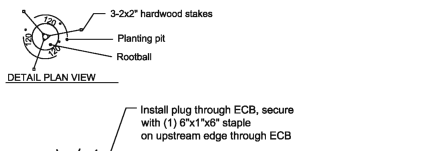
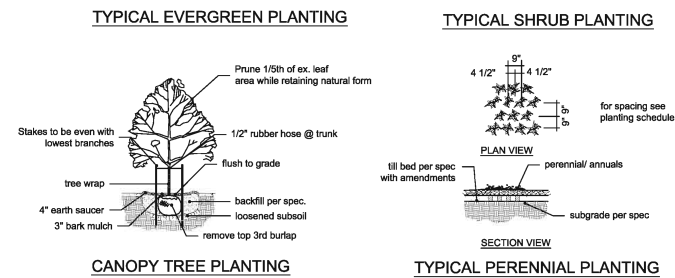
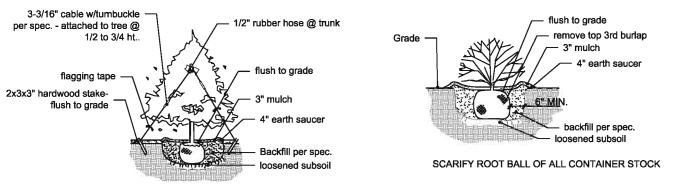
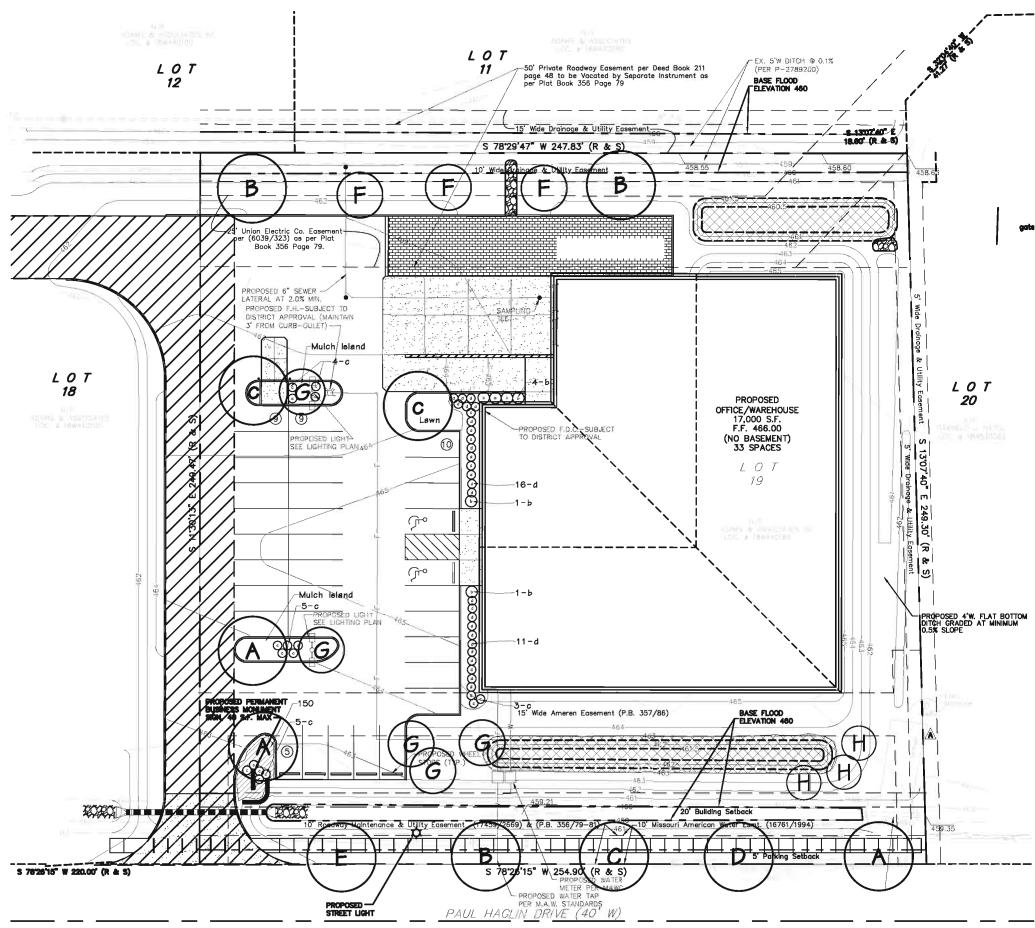
Date	Description	No.
12/21/09	City Comments	1

Drawn: BD
 Checked: DD

DeLong Landscape Architecture
 7520 West Branch
 St. Louis, MO 63117
 (314) 546-8866
 delong.la@gmail.com

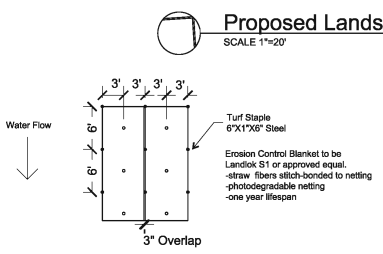
Sheet Title: Preliminary Landscape Plan
 Sheet No: LP-1

Date: 11/16/2009
 Job #: 105.001



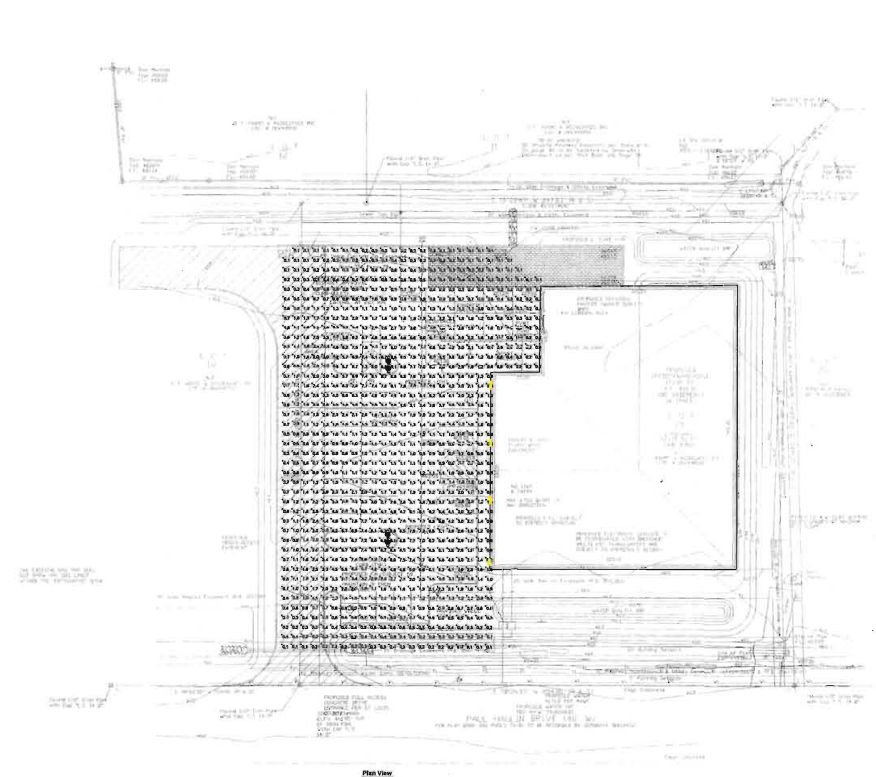
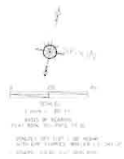
PLANT	QUANTITY	BOTANICAL NAME		SIZE	MATURE HEIGHT	TYPE
		ROPINOL NAME	COMMON NAME			
A	3	Acer rubrum 'Autumn Flame'	Autumn Flame Red Maple	2 1/2'	45'+	Fast Growing
B	3	Platanus x acerifolia	London Plane Tree	2 1/2'	45'+	Fast Growing
C	3	Quercus bicolor	Swamp White Oak	2 1/2'	45'+	Medium Growing
D	1	Quercus imbricaria	Shingle Oak	2 1/2'	45'+	Medium Growing
E	1	Quercus rubra	Northern Red Oak	2 1/2'	45'+	Medium Growing
F	3	Crataegus viridis 'Winter King'	Winter King Hawthorn	2 1/2'	25'+	Medium Growing
G	5	Cercis canadensis	Red Bud	2 1/2'	25'+	Fast Growing
H	3	Pinus strobus	White Pine	0	45'+	Fast Growing
b	6	Ilex glabra 'Shamrock'	Shamrock Inkberry	2-3'	3' O.C.	
c	17	Spiraea x bumalda 'Froebelii'	Froebel Spiraea	18-24"	3' O.C.	
d	27	Juniperus sabin 'Broadmoor'	Broadmoor Juniper	18-24"	3' O.C.	
	150	Liriope muscari	Liriope	1 qt.	12' O.C.	

- GENERAL NOTES:**
- Openpace ratio is 40.4%
 - Street trees Req. - 254.9/50 ft = 5 street trees
 - All street trees will be located at least 3' from proposed curb.
 - All street trees will be located at least 10' from all storm sewer structures.
 - All turf areas will be seeded.
 - An in-ground irrigation system will be provided.



SEED	SEEDING RATE	SEEDING RATE	SEED	SEEDING RATE
90	Andropogon virginicus	Broom Sedge	2x2x0" DCP	10' OC
90	Bouteloua curtipendula	Bideaste Gramin	2x2x0" DCP	10' OC
90	Sporobolus heterostachyus	Frailie Dropseed	2x2x0" DCP	10' OC
90	Carex vulpinoidea	Fox Sedge	2x2x0" DCP	10' OC
90	Carex graminea	Tolway Sedge	2x2x0" DCP	10' OC
90	Asclepias tuberosa	Butterfly Milkweed	2x2x0" DCP	10' OC
90	Gonolopsis lanceolata	Lanceleaf Coreopsis	2x2x0" DCP	10' OC
90	Panicum spretum	Heavy Bluestem	2x2x0" DCP	10' OC
90	Scilla maritima	Onion	2x2x0" DCP	10' OC
90	Scilla maritima	Onion	2x2x0" DCP	10' OC
90	Scilla maritima	Onion	2x2x0" DCP	10' OC
90	Scilla maritima	Onion	2x2x0" DCP	10' OC
90	Scilla maritima	Onion	2x2x0" DCP	10' OC
90	Scilla maritima	Onion	2x2x0" DCP	10' OC
90	Scilla maritima	Onion	2x2x0" DCP	10' OC
90	Scilla maritima	Onion	2x2x0" DCP	10' OC
90	Scilla maritima	Onion	2x2x0" DCP	10' OC
90	Scilla maritima	Onion	2x2x0" DCP	10' OC

* Note: Plant selection and quantities may vary depending on final design of forays and water quality basin.



Plan View
Scale: 1/8\"/>

STATISTICS					
Descriptor	Symbol	Qty	Min	Max	Angle(s)
046 Zone #2	+	21/16	0.1 ft	0.1 ft	21.07

LUMINAIRE SCHEDULE						
Symbol	Label	Qty	Category	Manufacturer	Description	Notes
+	A	2	UCI-IP-2000-100	OSRAM	OSRAM UCIPRO 2000-100	OSRAM UCIPRO 2000-100



Wings Corporate Estate
Lot 19
Twin head, 20' pole

Designer
RMS
Date
Nov 20 2009
Scale
AS NOTED
Drawing No.

Parisian Wall Mount Gas Light by Copper Sculptures

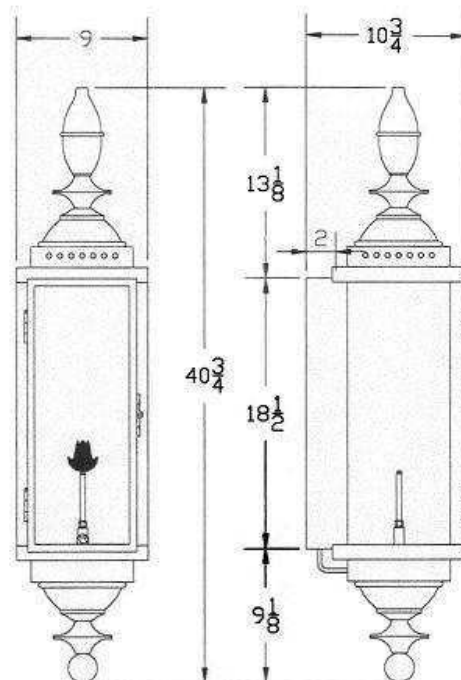
Copper Sculptures, Inc., created by Bill Shook is one of the few remaining companies in the world handcrafting copper lanterns with open flame burners. Sculpting copper and flame into period light fixtures consists of both art and history. Having perfected the craft, Copper Sculptures is able to offer the elegance of period lanterns with contemporary designs. Each lantern is handcrafted with pride and built only of solid copper with no lead to melt, allowing us to guarantee these lanterns for a lifetime.

All natural gas and propane lanterns are C.S.A. certified to comply with ANSI Standard Z21.42 for indoor or outdoor use.

Lantern ID: EC0 shown with patina finish black (PFB)

Lantern Dimensions: 40.75 x 9 x 10.75

EC-1 WALL MOUNT LIGHT



Submitted by Luikart-Eason-Calcaterra & Co.



Job Name:
ROADWAY LTG CHESTERFIELD
VALLEY - WINGS CORPORATE OFFICE

Catalog Number:
UCL-FLR-H2-250HPS-DBZ

Notes:

Type:
FIXT

LEC-STL08-11263

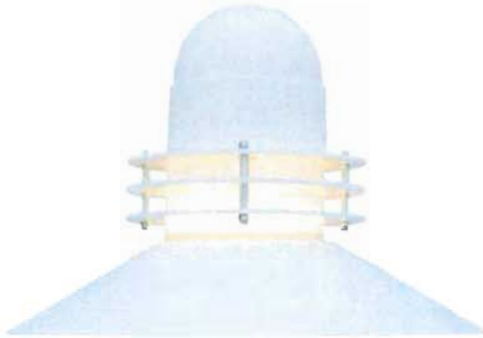
Universe Collection® – UCL

page 1 of 6

DATE

TYPE

Large Scale - Horizontal Reflector
Updated: 11/2008



- Modular system with five luminous options, four hood options, and two optical systems for customization to complement site design.
- Type 2,3,4 and 5 full cut off horizontal reflectors (without luminous element)
- Pole, wall, and pendant mounting options.
- Full cutoff, dark sky compliant configurations.
- EISA compliant
- IP65 rated
- Powder coat finish in 13 standard colors with a polymer primer sealer



Architectural Area Lighting

14249 Artesia Blvd | La Mirada | CA 90638
P 714.994.2700 | F 714.994.0522 | aal.net
Design patents, Copyright ©2008 Rev 11/2008





Job Name:
ROADWAY LTG CHESTERFIELD
VALLEY - WINGS CORPORATE OFFICE

Catalog Number:
UCL-FLR-H2-250HPS-DBZ

Notes:

Type:
FIXT

LEC-STL08-11263

Universe Collection® – UCL

page 2 of 6

DATE

TYPE

Fixture	Luminous Element	Optics	Lamp/Ballast	Color	Hood Options	Options
1	2	3	4	5	6	7

1. FIXTURE

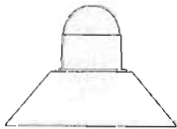
UCL Universe Large (Horizontal Reflector)

2. LUMINOUS ELEMENT

NO LUMINOUS ELEMENT

ANG

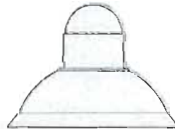
Angled Hood



HT: 21.4 in/545 mm
DIA: 30 in/760 mm

BEL

Bell Hood



HT: 22 in/560 mm
DIA: 30 in/760 mm

FLR

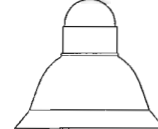
Flared Hood



HT: 21 in/535 mm
DIA: 32 in/810 mm

SKB

Skirted Bell Hood

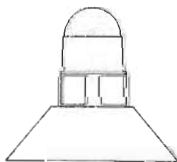


HT: 27.25 in/693 mm
DIA: 32 in/810 mm

4 LUMINOUS WINDOWS

WND-ANG

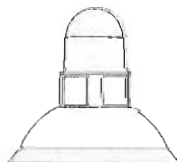
Angled Hood



HT: 26.7 in/680 mm
DIA: 30 in/760 mm

WND-BEL

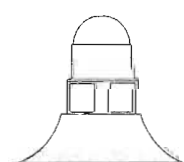
Bell Hood



HT: 26.7 in/680 mm
DIA: 30 in/760 mm

WND-FLR

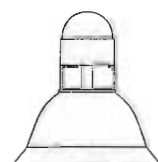
Flared Hood



HT: 26.7 in/680 mm
DIA: 32 in/810 mm

WND-SKB

Skirted Bell Hood



HT: 32.5 in/826 mm
DIA: 32 in/810 mm

SOLD TO

PO #

JOB NAME

Approvals

Architectural Area Lighting

14249 Artesia Blvd | La Mirada | CA 90638
P 714.994.2700 | F 714.994.0522 | aal.net
Design patents, Copyright ©2008 Rev 11/2008



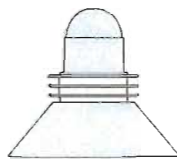
Universe Collection® – UCL

Fixture	Luminous Element	Optics	Lamp/Ballast	Color	Hood Options	Options
1	2	3	4	5	6	7

SOLID RINGS

SR-ANG

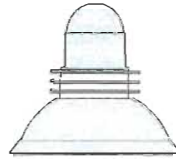
Angled Hood



HT: 26.7 in/680 mm
DIA: 30 in/760 mm

SR-BEL

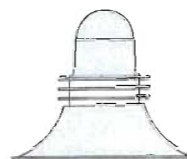
Bell Hood



HT: 26.7 in/680 mm
DIA: 30 in/760 mm

SR-FLR

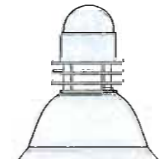
Flared Hood



HT: 26.7 in/680 mm
DIA: 32 in/810 mm

SR-SKB

Skirted Bell Hood

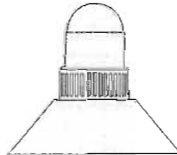


HT: 32.25 in/820 mm
DIA: 32 in/810 mm

VERTICAL SLOTS

VSL-ANG

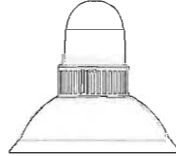
Angled Hood



HT: 26.7 in/680 mm
DIA: 30 in/760 mm

VSL-BEL

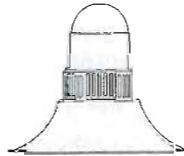
Bell Hood



HT: 26.7 in/680 mm
DIA: 30 in/760 mm

VSL-FLR

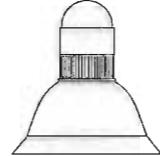
Flared Hood



HT: 26.7 in/680 mm
DIA: 32 in/810 mm

VSL-SKB

Skirted Bell Hood



HT: 32.5 in/826 mm
DIA: 32 in/810 mm

LUMINOUS RINGS

LUM-ANG

Angled Hood



HT: 26.7 in/680 mm
DIA: 30 in/760 mm

LUM-BEL

Bell Hood



HT: 26.7 in/680 mm
DIA: 30 in/760 mm

LUM-FLR

Flared Hood



HT: 26.7 in/680 mm
DIA: 32 in/810 mm

LUM-SKB

Skirted Bell Hood



HT: 32.25 in/820 mm
DIA: 32 in/810 mm

SOLD TO

PO #

JOB NAME

Approvals

Architectural Area Lighting

14249 Artesia Blvd | La Mirada | CA 90638
P 714.994.2700 | F 714.994.0522 | aal.net
Design patents, Copyright ©2008 Rev 11/2008



Job Name:
ROADWAY LTG CHESTERFIELD
VALLEY - WINGS CORPORATE OFFICE

Catalog Number:
UCL-FLR-H2-250HPS-DBZ

Notes:

Type:
FIXT

LEC-STL08-11263

Universe Collection® – UCL

page 4 of 6

DATE

TYPE

Fixture	Luminous Element	Optics	Lamp/Ballast	Color	Hood Options	Options
1	2	3	4	5	6	7

3. OPTICS

- H2 Type 2 horizontal reflector, flat glass lens
- H3 Type 3 horizontal reflector, flat glass lens
- H4 Type 4 horizontal reflector, flat glass lens
- H5 Type 5 horizontal reflector, flat glass lens

4. LAMP/BALLAST

- 150PSMH Pulse start 150 watt metal halide 120/208/240/277 volt ballast. Use a medium base ED-17 lamp.
- 250PSMH Pulse start 250 watt metal halide 120/208/240/277 volt ballast. Use a mogul base, ED-28 lamp.
- 320PSMH Pulse start 320 watt metal halide 120/208/240/277 volt ballast. Use a mogul base, ED-28 lamp.
- 350PSMH Pulse start 350 watt metal halide 120/208/240/277 volt ballast. Use a mogul base, ED-28 lamp.
- 400PSMH Pulse start 400 watt metal halide 120/208/240/277 volt ballast. Use a mogul base, ED-28 lamp.
- 150HPS High pressure sodium 120/208/240/277 volt ballast. Use a mogul base, ED-23 1/2 lamp.
- 250HPS High pressure sodium 120/208/240/277 volt ballast. Use a mogul base, ED-18 lamp.
- 400HPS High pressure sodium 120/208/240/277 volt ballast. Use a mogul base, ED-18 lamp.
- IL-85 85 watt, induction lamp system with high frequency generator. Specify 120, 208, 240 or 277 volt. -20° C start temp.
- IL-165 165 watt, induction lamp system with high frequency generator. Specify 120, 208, 240 or 277 volt. -20° C start temp.

*All ballasts are factory wired for 277 volts, unless specified. Lamps not included.
All applicable ballasts are EISA compliant.*

5. COLOR

- AWT Arctic White
- BLK Black
- MTB Matte Black
- DGN Dark Green
- DBZ Dark Bronze
- WRZ Weathered Bronze
- BRM Metallic Bronze
- VBL Verde Blue
- CRT Corten
- MAL Matte Aluminum
- MDG Medium Grey
- ATG Antique Green
- LGY Light Grey
- RAL/PREMIUM COLOR Provide a RAL 4 digit color number
- CUSTOM COLOR Please provide a color chip for matching

SOLD TO

PO #

JOB NAME

Approvals

Architectural Area Lighting

14249 Artesia Blvd | La Mirada | CA 90638
P 714.994.2700 | F 714.994.0522 | aal.net
Design patents, Copyright ©2008 Rev 11/2008



Job Name:
ROADWAY LTG CHESTERFIELD
VALLEY - WINGS CORPORATE OFFICE

Catalog Number:
UCL-FLR-H2-250HPS-DBZ

Notes:

Type:

FIXT

LEC-STL08-11263

Universe Collection® – UCL

page 5 of 6

DATE

TYPE

Fixture	Luminous Element	Optics	Lamp/Ballast	Color	Hood Options	Options
1	2	3	4	5	6	7

6. HOOD OPTIONS

- COP Copper Hood
- STS Stainless Steel Hood

All styles of hoods are available in copper or stainless steel. The natural copper and stainless steel hoods are unfinished to develop a patina over time. All hoods have the underside of the hoods finished in high reflectance white.

7. OPTIONS

- FLD Lightly diffused finish on flat glass lens.
- HSS House side shield.
- QRS Quartz restrike controller and socket for a T-4 mini-cand halogen lamp, maximum 150 watt.
- QL Socket for a T-4 mini-cand halogen lamp. Must be field wired to a separate 120 volt circuit. Maximum 150 watt.
- 347 120/240/347 volt ballast for HID lamp
- PMS Pendant mount with 48 in/1220mm stem and canopy with swivel. Stem and canopy painted white. 45° max. movement.
- SLC Internal sleeve to block off the light from the lens when a Luminous element is chosen: WND, SR, VSL or LUM

INNER LENS - (LUM Option only) Optional inner lens adds color to the ring edges when illuminated.

- BL Blue acrylic inner lens
- RD Red acrylic inner lens
- GRN Green acrylic inner lens

SOLD TO

PO #

JOB NAME

Approvals

Architectural Area Lighting

14249 Artesia Blvd | La Mirada | CA 90638
P 714.994.2700 | F 714.994.0522 | aal.net
Design patents, Copyright ©2008 Rev 11/2008

Submitted by Luikart-Eason-Calcaterra & Co.



Job Name:
ROADWAY LTG CHESTERFIELD
VALLEY - WINGS CORPORATE OFFICE

Catalog Number:
UCL-FLR-H2-250HPS-DBZ

Notes:

Type:
FIXT

LEC-STL08-11263

Universe Collection® – UCL

page 6 of 6

DATE

TYPE

Specifications

HOUSING

The fixture ballast housing shall be one piece die cast aluminum. The luminous rings shall be clear acrylic with an internal lens. The lens shall be lightly diffused acrylic, sealed to the housing and shade with molded silicone gaskets. The hood and spacers shall be heavy gage spun aluminum with hemmed edges for added rigidity.

All internal and external hardware shall be stainless steel.

Reflector models shall consist of a die cast aluminum door frame and ring assembly. The hood ring assembly shall be fully sealed with a molded silicone gasket. The door frame shall be hinged to the ring and opened with two captive fasteners for relamping. The tempered sag glass lens is held in the door frame with a molded silicone gasket.

OPTICAL ASSEMBLY

The reflector module shall be composed of faceted, semi specular anodized aluminum panels rigidly attached in an aluminum tray. The reflector shall be easily removed by loosening four screws and lifting it out the tray. The reflector tray shall be rotatable on 90° centers for orienting the light distribution. The reflectors shall meet ANSI-IES standards for full cutoff.

ELECTRICAL

The ballast shall be mounted on a prewired tray with a quick disconnect plug and removed by loosening two captive screws. HID ballasts are high power factor, rated for -30°F starting. Sockets are medium base, pulse rated porcelain. Ballasts are multi-tap, wired at the factory for 277 volts, unless specified.

INSTALLATION & MOUNTING

The fixture shall be attached to the arm assembly with three stainless steel bolts. The connection shall be sealed with a silicone compression gasket.

FINISH

Fixture finish consists of a five stage pretreatment regimen with a polymer primer sealer, oven dry off and top coated with a thermoset super TGIC polyester powder coat finish. The finish shall meet the AAMA 605.2 performance specification which includes passing a 3000 hour salt spray test for corrosion resistance.

EISA COMPLIANCE

AAL is committed to complying with EISA requirements 100%. All applicable products manufactured for sale in the United States after January 1, 2009, will meet EISA requirements.

ENVIRONMENTAL COMMITMENT

AAL has always provided efficient, effective and environmentally sound outdoor lighting fixtures. In addition to our every day environmental practices, AAL is the first lighting manufacturer to become CARBON NEUTRAL. Becoming CARBON NEUTRAL is just another step we have taken to promote environmental responsibility within our culture.

CERTIFICATION

The fixture shall be listed with ETL and U.L. for outdoor, wet location use, UL1598 and Canadian CSA Std. C22.2 NO.250. IP=65

WARRANTY

Fixture shall be warranted for three years. Ballast components carry the ballast manufacturer's limited warranty.

Architectural Area Lighting

14249 Artesia Blvd | La Mirada | CA 90638
P 714.994.2700 | F 714.994.0522 | aal.net
Design patents, Copyright ©2008 Rev 11/2008

Submitted by Luikart-Eason-Calcaterra & Co.



Job Name:
ROADWAY LTG CHESTERFIELD
VALLEY - WINGS CORPORATE OFFICE

Catalog Number:
SLA7-DB

Notes:

Type:

ARM

LEC-STL08-11263

CONTEMPORARY ARMS

SLA 7

DATE

TYPE

PAGE 1 OF 1

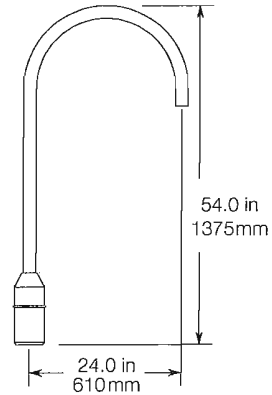
SLA 7

Slips over 4" pole
Weight: 9 LBS. EPA: 1.34

The arm shall be of one piece unitized aluminum construction, fully welded and assembled. The slip fitter shall be cast aluminum with an internal wire-way and pole stop. The arm shall be prewired with a quick connector for easy installation.

The arm shall have a cast aluminum fitter welded to the top of the arm(s) for attaching the fixture. The fixture shall be mounted with three stainless steel bolts through the top of the arm fitter into the fixture. The attachment point shall have a silicone pad for sealing the fixture to arm connection.

The arm shall slip over a 4"/100mm diameter pole or tenon. The cast aluminum slip fitter shall have six stainless steel cup point set screws for securing the arm to the pole or tenon.



SOLD TO	PO #	JOB NAME
/	/	/

APPROVALS

Architectural Area Lighting

14249 Artesia Blvd / La Mirada, CA 90638
714 994.2700 / fax 714 994.0522 / www.aal.net

REF: SLA 7.PDF © 2005. DESIGN PATENTED.



Job Name:
ROADWAY LTG CHESTERFIELD
VALLEY - WINGS CORPORATE OFFICE

Catalog Number:
RSA30C7-4-4-BM 4" TENON

Notes:

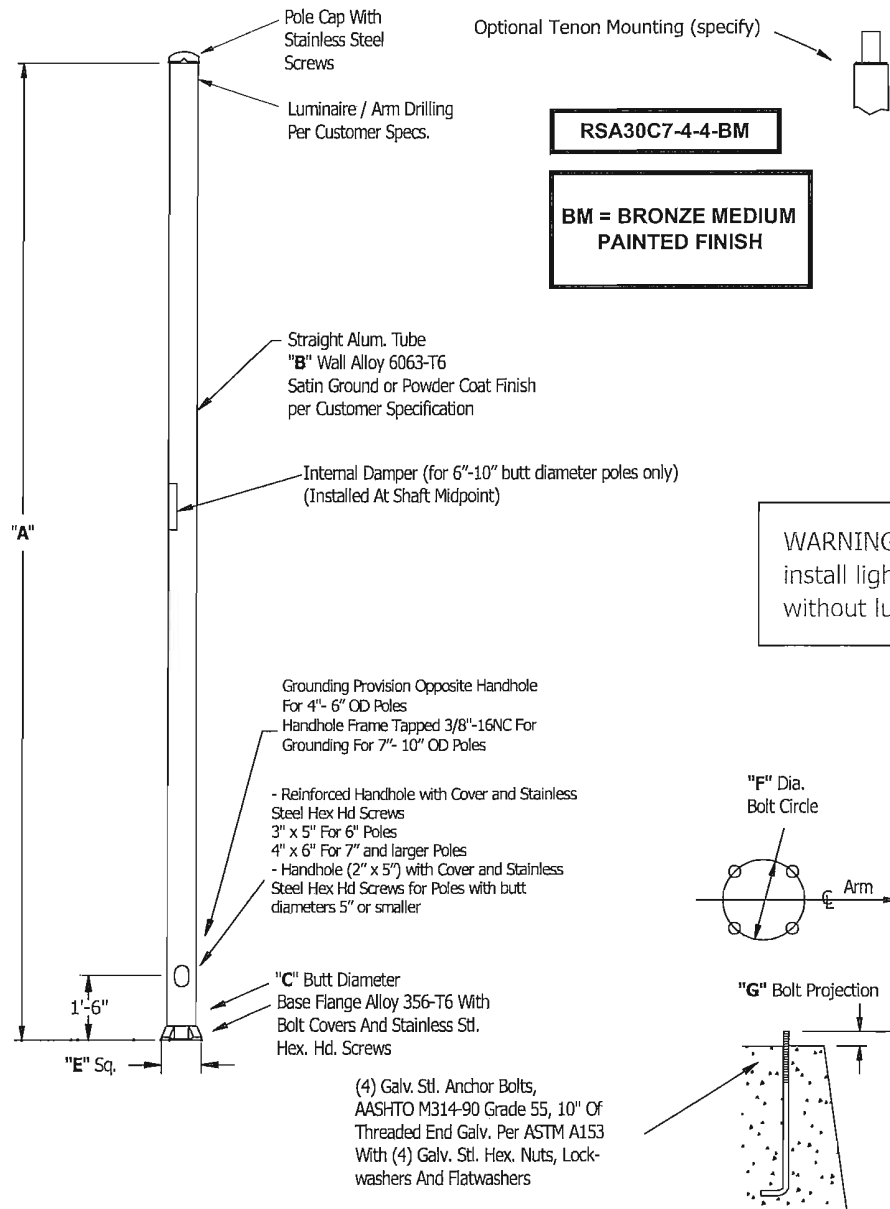
Type:
POLE

LEC-STL08-11263



4 Bolt Base

RSA30C7-4-



Mounting Height:	30 ft	
Wall Thickness:	.156 in	<i>Maximum EPA</i>
Butt Diameter:	7 in	70: 8.1
Top Diameter:	7 in	80: 5.7
Base Diameter:	10.5 in	90: 4.2
Bolt Circle:	10-11 in	100: 3.1
Bolt Projection:	2.75 in	110: 2.4
Bolt Size:	1 x 36 x 4	
Net Weight:	130	Accessories
Luminary Weight:	100	
Arm Length:		
Quantity:		

Your Name:
Representative Name:
Architect Name:
Project Name:
Customer P.O. #:
Finish: -
Date: 11/17/2009
Notes: