

ISSUED FOR	DATE
CITY SUBMISSION	3.12.2012

T-O VENTURES LLC

200 EAST LONG LAKE RD.
SUITE 300
BLOOMFIELD HILLS, MI
48304-2324

CHESTERFIELD OUTLETS

PROJECT ADDRESS
N OUTER 40
CHESTERFIELD, MO 63005

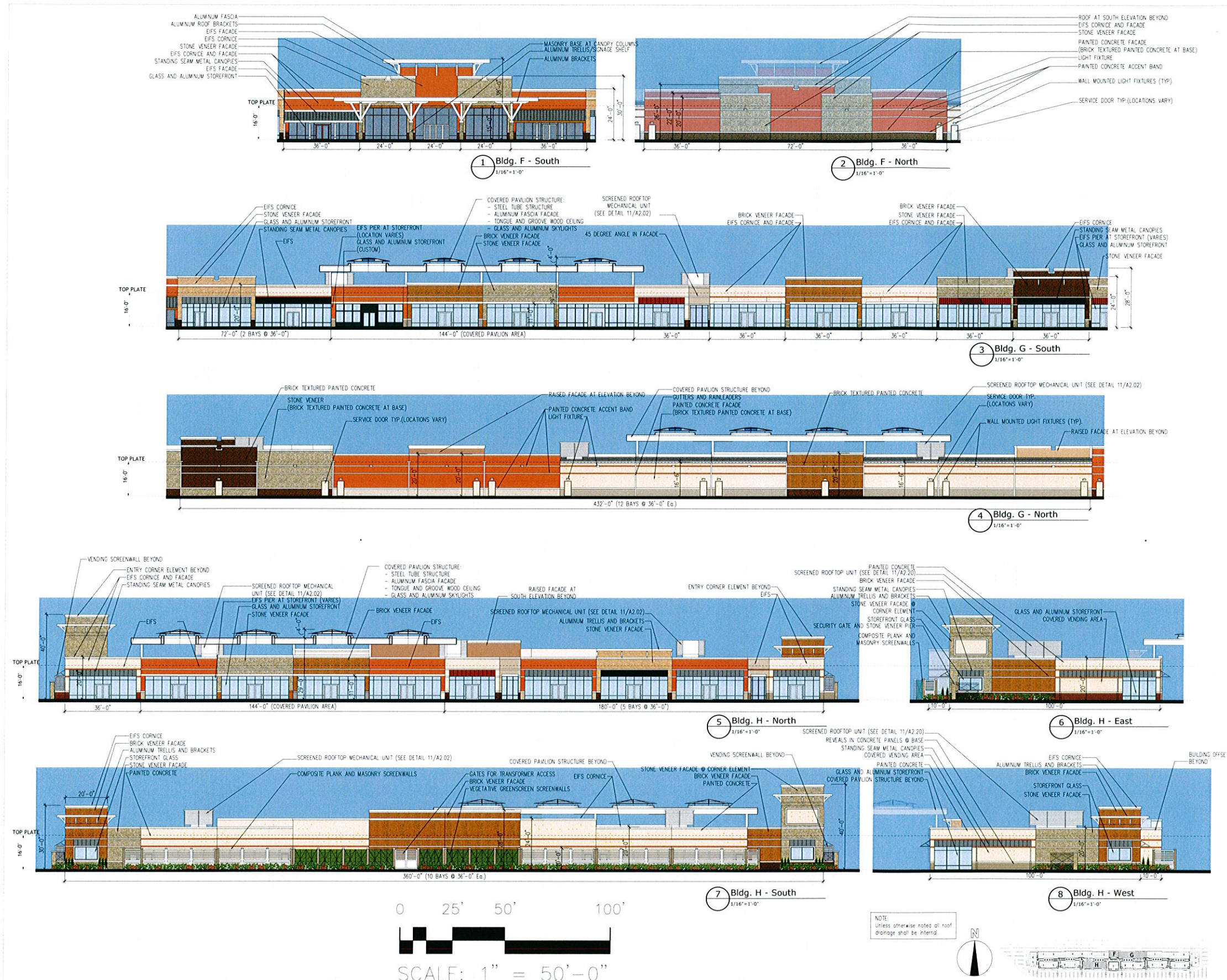
DCI Project No. 647-11
Owner Project No.
Drawn by Checked by

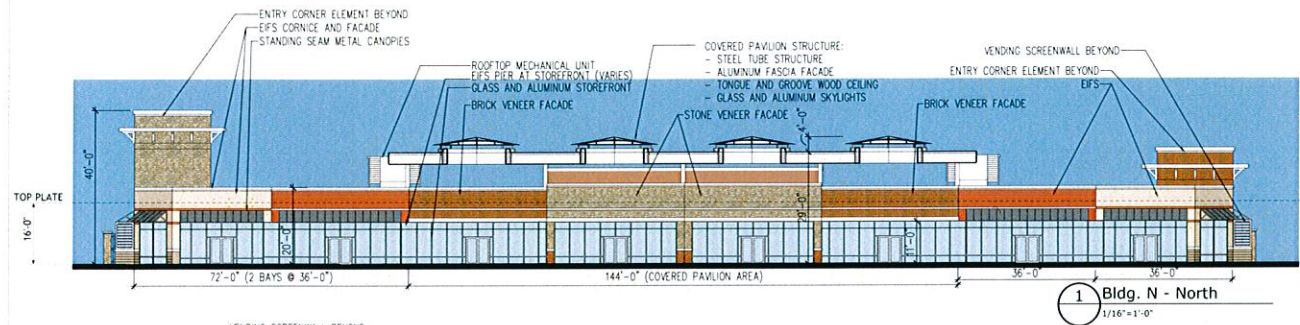


BUILDING F - G - H ELEVATIONS

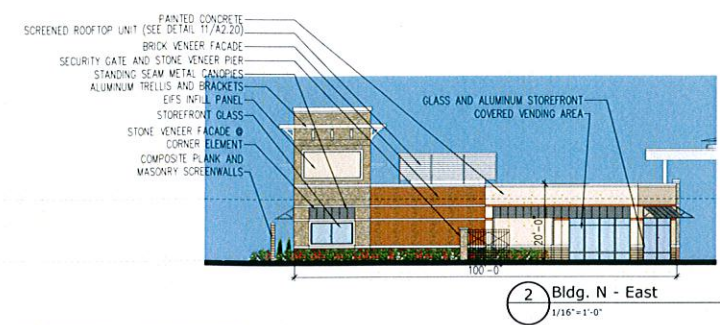
SCALE
1/16"=1'-0"

SHEET NUMBER
A2.03

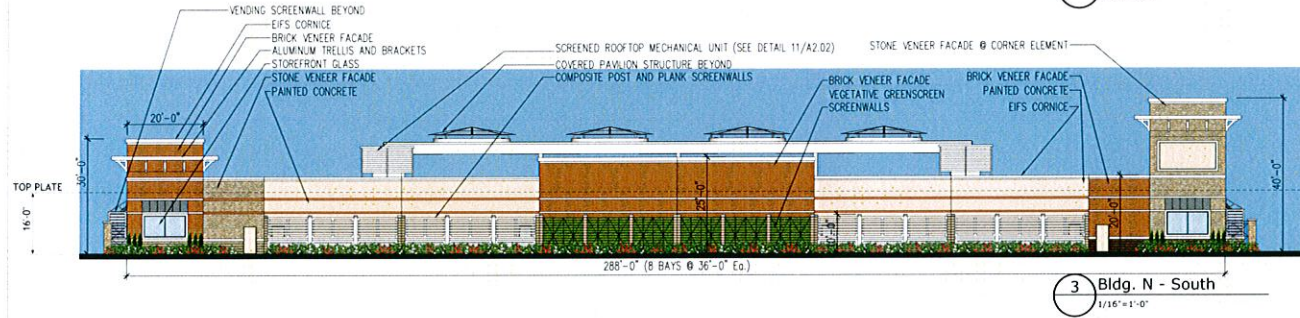




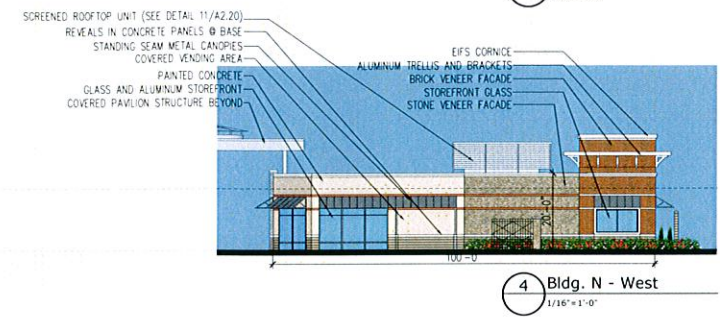
1 Bldg. N - North
1/16"=1'-0"



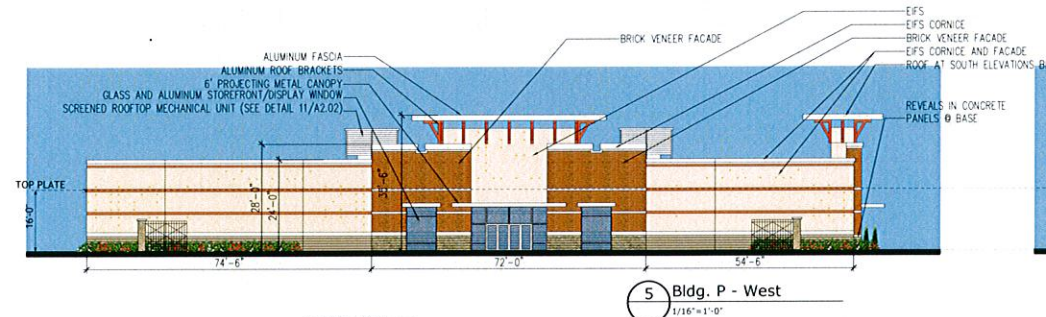
2 Bldg. N - East
1/16"=1'-0"



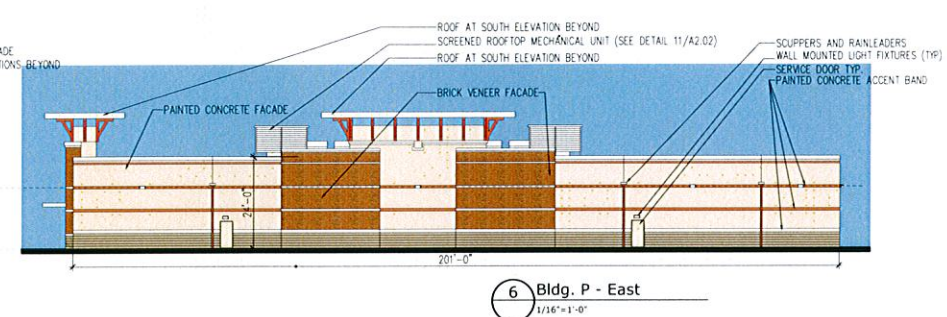
3 Bldg. N - South
1/16"=1'-0"



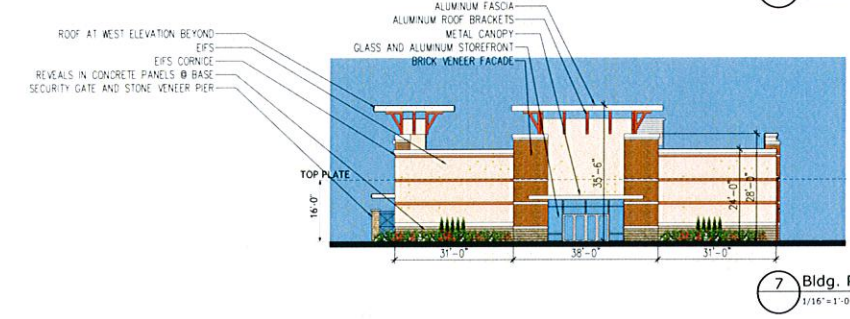
4 Bldg. N - West
1/16"=1'-0"



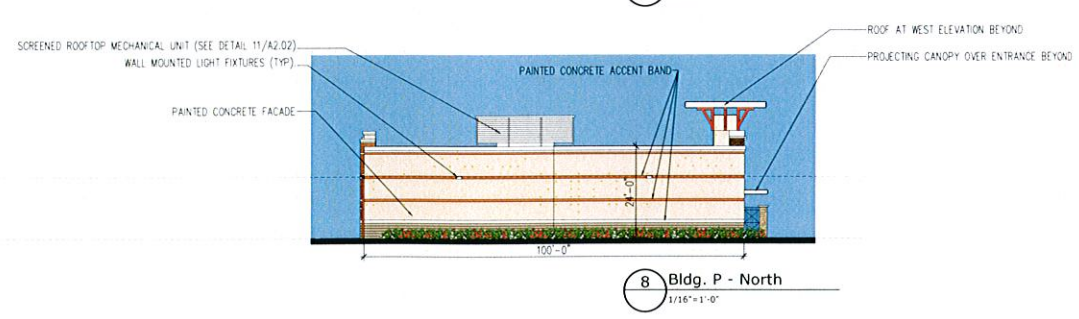
5 Bldg. P - West
1/16"=1'-0"



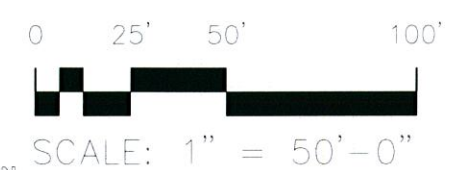
6 Bldg. P - East
1/16"=1'-0"



7 Bldg. P - South
1/16"=1'-0"



8 Bldg. P - North
1/16"=1'-0"



NOTE: Unless otherwise noted all roof drainage shall be internal.

DESIGN COLLECTIVE

ISSUED FOR DATE

CITY SUBMISSION	3.12.2019

CONSULTANT

T-O VENTURES LLC

200 EAST LONG LAKE RD.
SUITE 300
BLOOMFIELD HILLS, MI
48304-2324

PROJECT NAME
CHESTERFIELD OUTLETS

PROJECT ADDRESS
N OUTER 40
CHESTERFIELD, MO 63005

DCI Project No. 647-11
Owner Project No.
Drawn by _____ Checked by _____



SHEET TITLE
BUILDING N - P ELEVATIONS

SCALE
1/16"=1'-0"

SHEET NUMBER
A2.06

312 BLACKWELL STREET, SUITE 100
DURHAM, NORTH CAROLINA 27701
T: 919.381.9322 F: 919.381.9323

601 EAST PRATT STREET, SUITE 300
BALTIMORE, MARYLAND 21202
T: 410.685.6655 F: 410.630.6242

ARCHITECTURE, PLANNING, INTERIORS
WWW.DESIGNCOLLECTIVE.COM