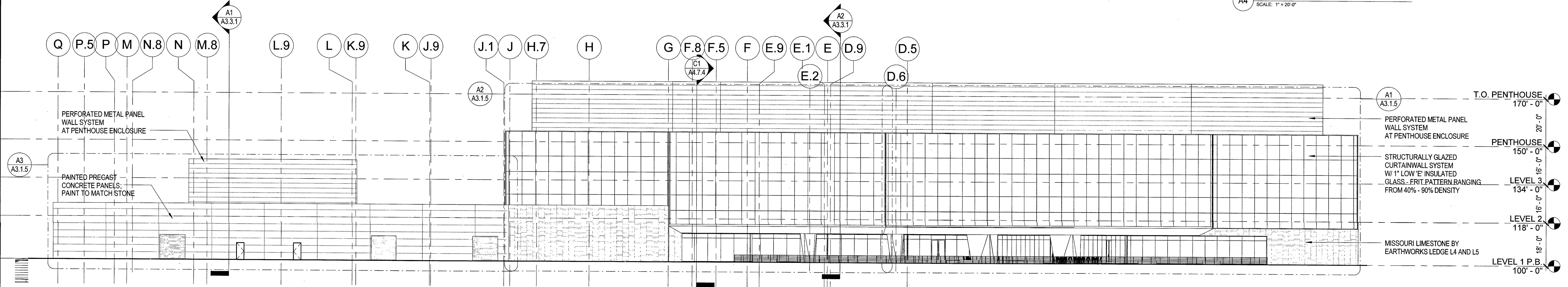
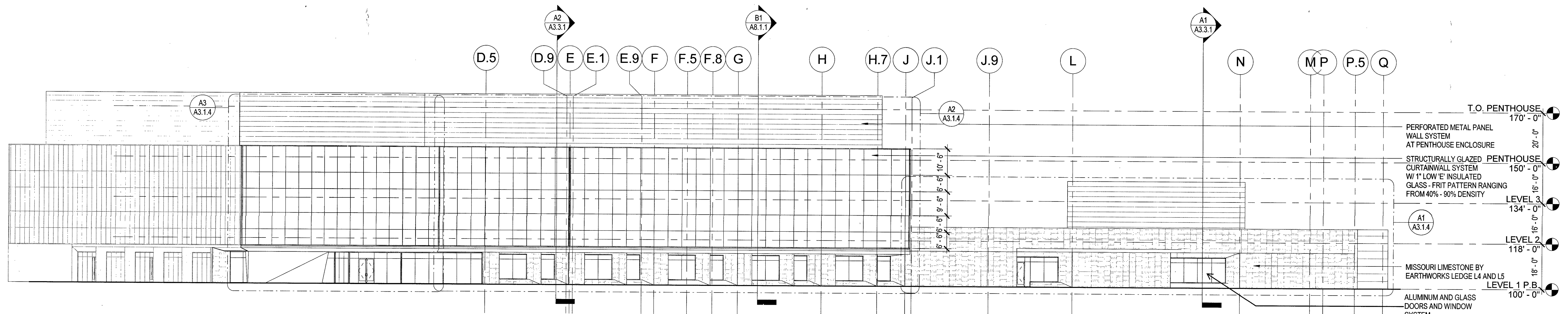


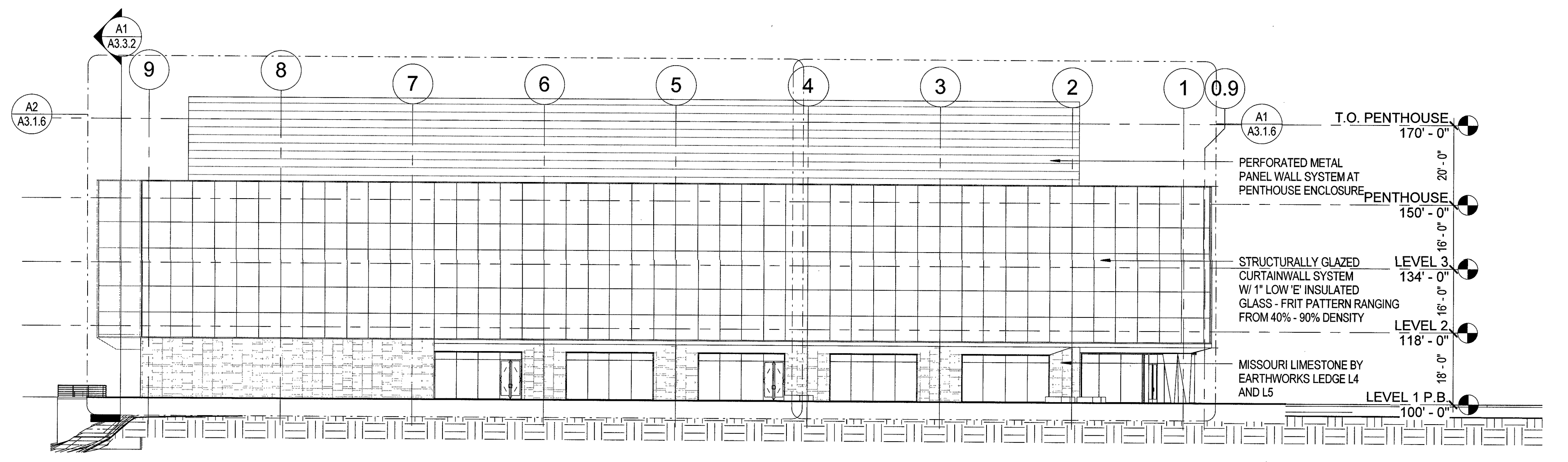
A4 OVERALL BUILDING ELEVATION - NORTH
SCALE: 1" = 20'-0"



A3 OVERALL BUILDING ELEVATION - WEST
SCALE: 1" = 20'-0"



A2 OVERALL BUILDING ELEVATION - EAST
SCALE: 1" = 20'-0"



A1 OVERALL BUILDING ELEVATION - SOUTH
SCALE: 1" = 20'-0"

ELEVATION NOTES

GENERAL NOTES

CLAYCO
THE ART & SCIENCE OF BUILDING
2100 INDEPENDENT BUSINESS CENTER DRIVE
ST. LOUIS, MISSOURI 63114
PH: 314.428.1000 FX: 314.428.3127

BUILDING DESIGN ARCHITECT
FORUM
2100 INDEPENDENT BUSINESS CENTER DRIVE
ST. LOUIS, MISSOURI 63114
PH: 314.428.1000 FX: 314.428.3127

LAB DESIGN ARCHITECT
EWING COLE
100 N. 8TH STREET
PHILADELPHIA, PA 19106

CONTRACTOR
CLAYCO

DEVELOPER
CLAYCO REALTY GROUP

LANDSCAPE ARCHITECT
FORUM STUDIO

CIVIL ENGINEER
STOCK & ASSOCIATES

STRUCTURAL ENGINEER
EWING COLE

MECHANICAL ENGINEER
EWING COLE

ELECTRICAL ENGINEER
EWING COLE

PLUMBING ENGINEER
EWING COLE

FIRE PROTECTION ENGINEER
EWING COLE



CRG
REAL ESTATE SOLUTIONS

PROJECT FIT

DRAWING ISSUE

DESCRIPTION	DATE
SCHEMATIC DESIGN	10/14/2016
SDSP	10/21/2016
SDSP RESUBMITTAL	11/23/2016

DRAWING TITLE
OVERALL ELEVATIONS

DRAWING NO.
A3.0.1
Forum # 601-02886 Consult #

CLAYCO
THE ART & SCIENCE OF BUILDING
2159 INNERBELT BUSINESS CENTER DRIVE
ST. LOUIS, MISSOURI 63114
PH: 314.429.5100 FX: 314.429.3107

BUILDING DESIGN ARCHITECT
FORUM
2159 INNERBELT BUSINESS CENTER DRIVE
ST. LOUIS, MISSOURI 63114
PH: 314.429.5100 FX: 314.429.3107

LAB DESIGN ARCHITECT
EWING COLE
100 N. 6TH STREET
PHILADELPHIA, PA 19106

CONTRACTOR
CLAYCO

DEVELOPER
CLAYCO REALTY GROUP

LANDSCAPE ARCHITECT
FORUM STUDIO

CIVIL ENGINEER
STOCK & ASSOCIATES

STRUCTURAL ENGINEER
EWING COLE

MECHANICAL ENGINEER
EWING COLE

ELECTRICAL ENGINEER
EWING COLE

PLUMBING ENGINEER
EWING COLE

FIRE PROTECTION ENGINEER
EWING COLE



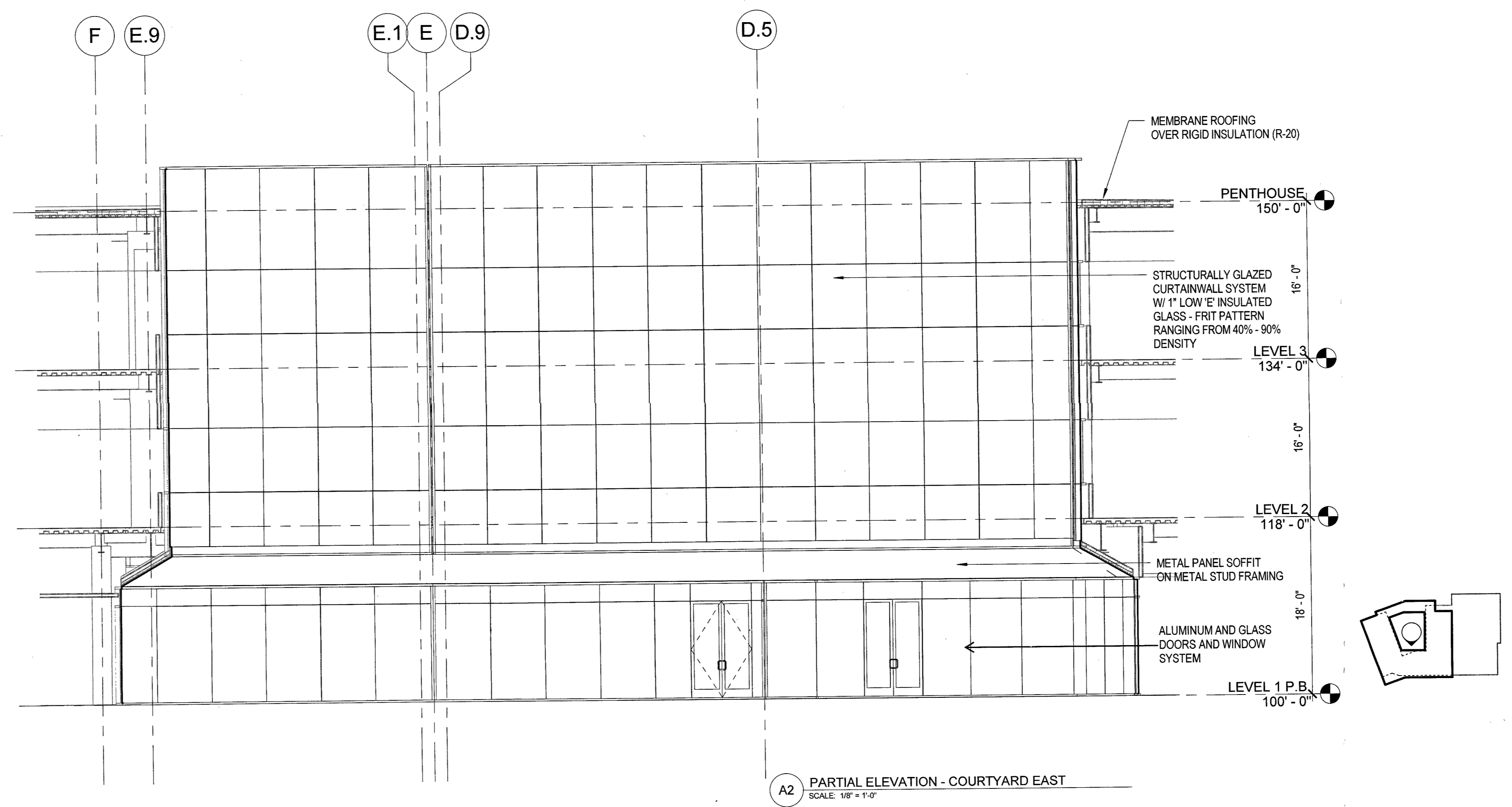
PROJECT FIT

DRAWING ISSUE	
DESCRIPTION	DATE
SCHEMATIC DESIGN	10/14/2016
SOSP	10/21/2016
SOSP RESUBMITTAL	11/23/2016

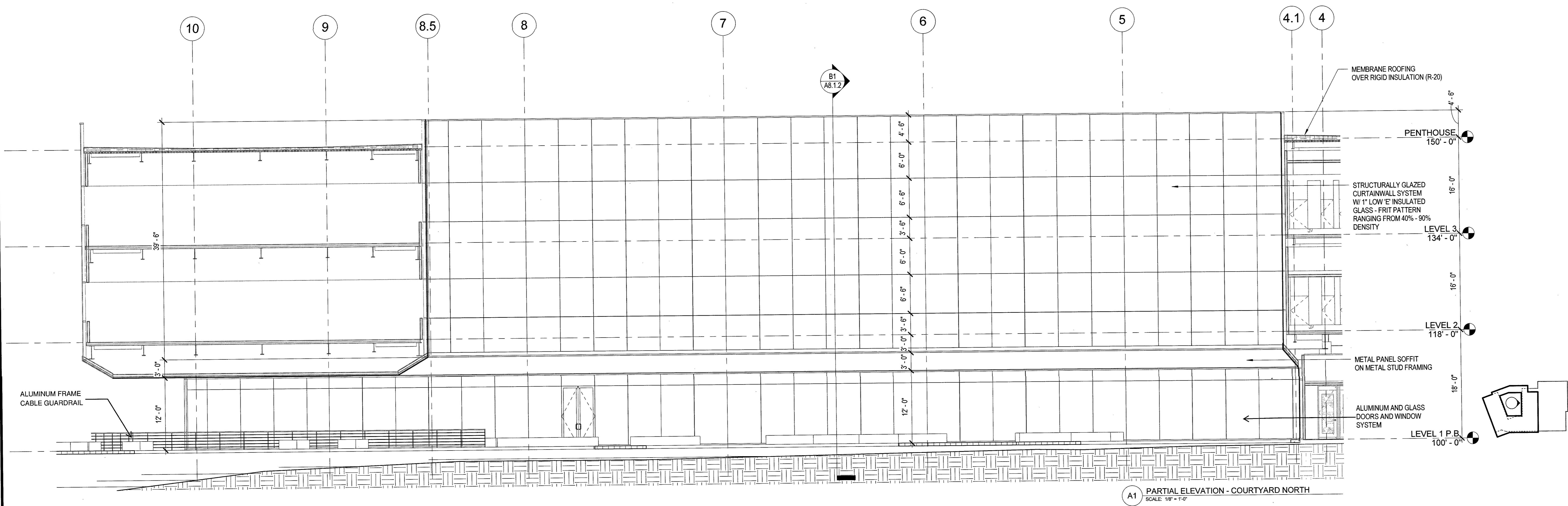
DRAWING TITLE
ENLARGED ELEVATIONS -
COURTYARD

DRAWING NO.
A3.1.1

Forum # 801-22666 Consult #



A2 PARTIAL ELEVATION - COURTYARD EAST
SCALE: 1/8" = 1'-0"



A1 PARTIAL ELEVATION - COURTYARD NORTH
SCALE: 1/8" = 1'-0"

ELEVATION NOTES

GENERAL NOTES

CLAYCO
THE ART & SCIENCE OF BUILDING
2199 INNERBELT BUSINESS CENTER DRIVE
ST. LOUIS, MISSOURI 63114
PH: 314.429.5100 FX: 314.429.3137

FORUM
BUILDING DESIGN ARCHITECT
2199 INNERBELT BUSINESS CENTER DRIVE
ST. LOUIS, MISSOURI 63114
PH: 314.429.5100 FX: 314.429.3137

EWING COLE
LAB DESIGN ARCHITECT
100 N. 6TH STREET
PHILADELPHIA, PA 19106

CLAYCO
CONTRACTOR

CLAYCO REALTY GROUP
DEVELOPER

FORUM STUDIO
LANDSCAPE ARCHITECT

STOCK & ASSOCIATES
CIVIL ENGINEER

EWING COLE
STRUCTURAL ENGINEER

EWING COLE
MECHANICAL ENGINEER

EWING COLE
ELECTRICAL ENGINEER

EWING COLE
PLUMBING ENGINEER

EWING COLE
FIRE PROTECTION ENGINEER

LEED-NC

CRG
REAL ESTATE SOLUTIONS

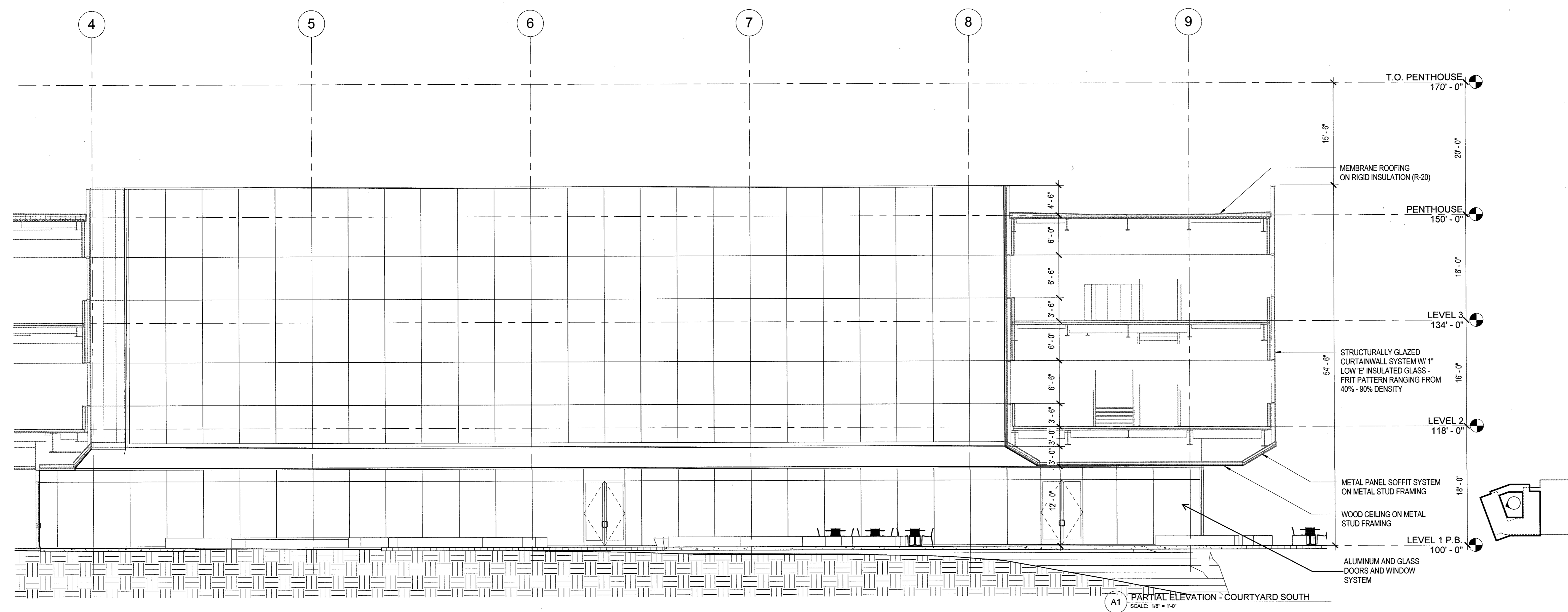
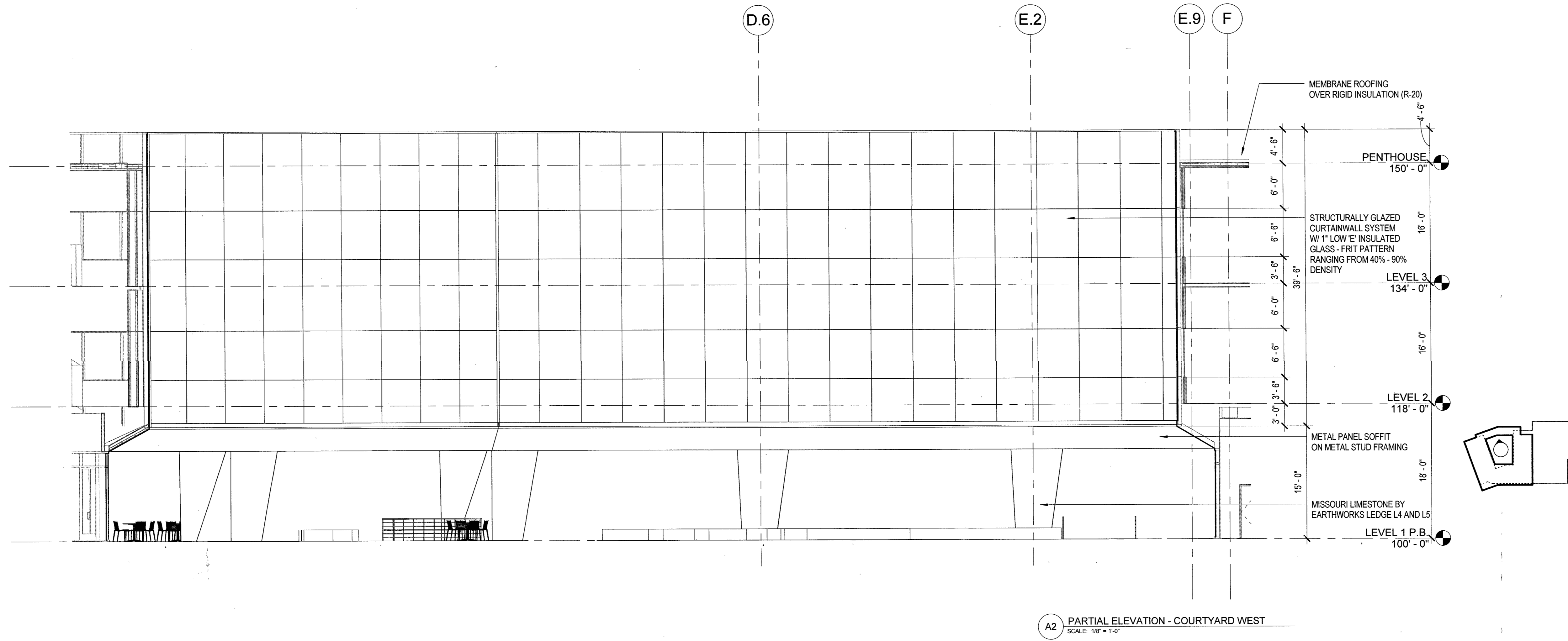
PROJECT FIT

DRAWING ISSUE	
DESCRIPTION	DATE
SCHEMATIC DESIGN	10/14/2016
SDSP	10/21/2016
SDSP RESUBMITTAL	11/23/2016

DRAWING TITLE
ENLARGED ELEVATIONS - COURTYARD

DRAWING NO.
A3.1.2

Forum # 891-02996 Consult #



ELEVATION NOTES

GENERAL NOTES

CLAYCO
THE ART & SCIENCE OF BUILDING
2100 INDEPENDENT BUSINESS CENTER DRIVE
PHILADELPHIA, PA 19103
PH: 215.426.3100 FX: 215.426.3137

BUILDING DESIGN ARCHITECT
FORUM

2100 INDEPENDENT BUSINESS CENTER DRIVE
ST. LOUIS, MISSOURI 63114
PH: 314.426.3100 FX: 314.426.3137

LAB DESIGN ARCHITECT
EWING COLE

100 N. 6TH STREET
PHILADELPHIA, PA 19106

CONTRACTOR
CLAYCO

DEVELOPER
CLAYCO REALTY GROUP

LANDSCAPE ARCHITECT
FORUM STUDIO

CIVIL ENGINEER
STOCK & ASSOCIATES

STRUCTURAL ENGINEER
EWING COLE

MECHANICAL ENGINEER
EWING COLE

ELECTRICAL ENGINEER
EWING COLE

PLUMBING ENGINEER
EWING COLE

FIRE PROTECTION ENGINEER
EWING COLE

LEED-NC

CRG

REAL ESTATE SOLUTIONS

LEED-NC

CRG
REAL ESTATE SOLUTIONS

PROJECT FIT

DRAWING ISSUE

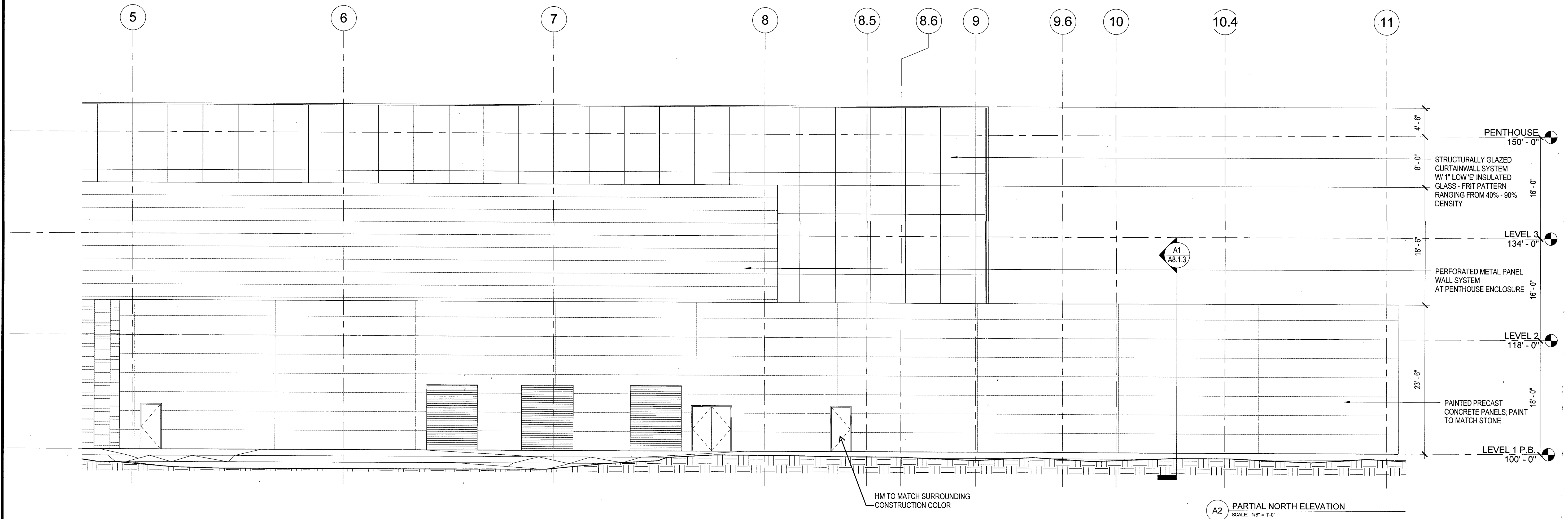
DESCRIPTION	DATE
SCHEMATIC DESIGN	10/14/2016
SDSP	10/21/2016
SDSP RESUBMITTAL	11/23/2016

DRAWING TITLE
ENLARGED ELEVATIONS - NORTH

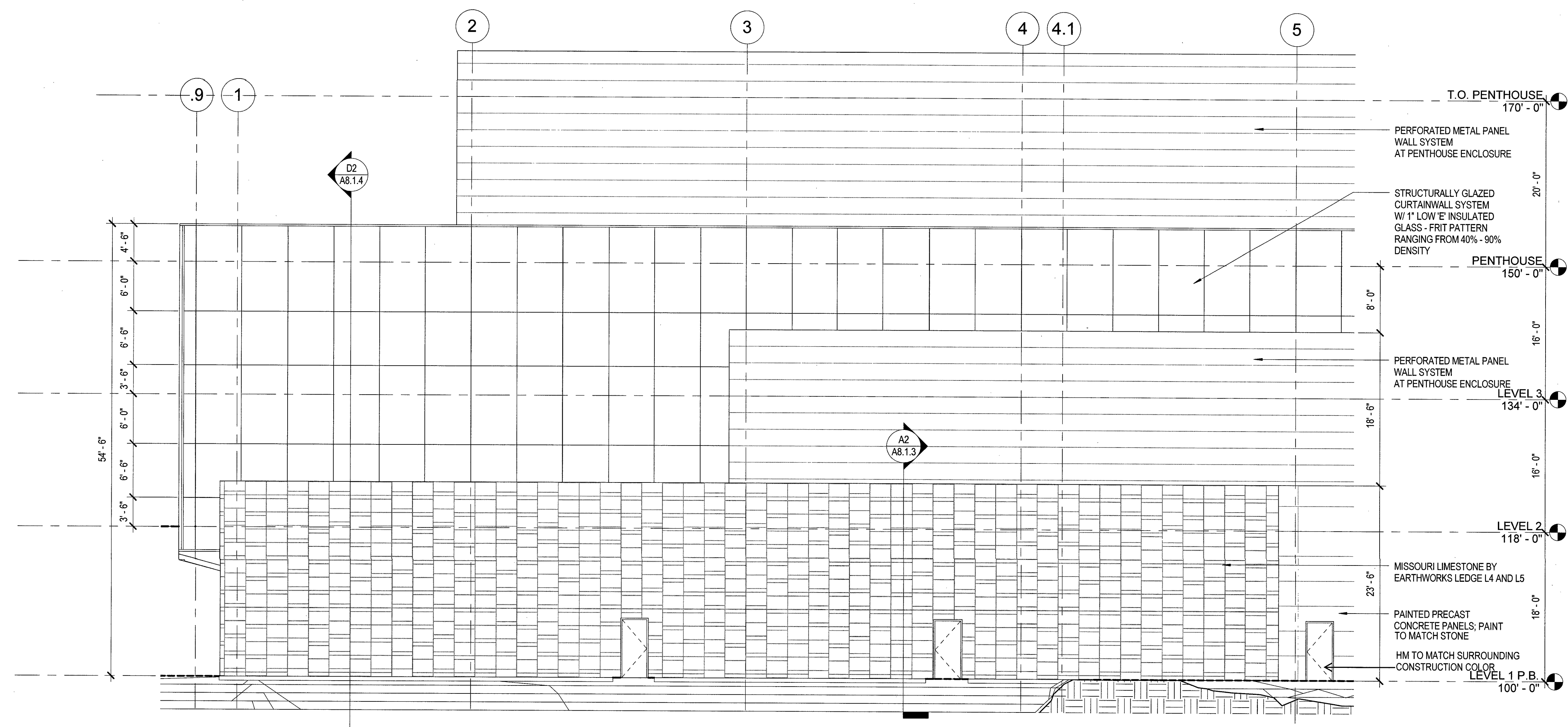
DRAWING NO.

A3.1.3

Forum # 601-02266 Consult #



A2 PARTIAL NORTH ELEVATION
SCALE: 1/8" = 1'-0"



A1 PARTIAL NORTH ELEVATION
SCALE: 1/8" = 1'-0"

ELEVATION NOTES

GENERAL NOTES

CLAYCO
THE ART & SCIENCE OF BUILDING
2100 INDEPENDENT BUSINESS CENTER DRIVE
PHILADELPHIA, PA 19103
PH: 215.426.2100 FX: 215.426.3137

FORUM
BUILDING DESIGN ARCHITECT
2100 INDEPENDENT BUSINESS CENTER DRIVE
ST. LOUIS, MISSOURI 63114
PH: 314.426.1010 FX: 314.426.7755

EWING COLE
LAB DESIGN ARCHITECT
100 N. 4TH STREET
PHILADELPHIA, PA 19101

CLAYCO
CONTRACTOR

CLAYCO REALTY GROUP
DEVELOPER

FORUM STUDIO
LANDSCAPE ARCHITECT

STOCK & ASSOCIATES
CIVIL ENGINEER

EWING COLE
STRUCTURAL ENGINEER

EWING COLE
MECHANICAL ENGINEER

EWING COLE
ELECTRICAL ENGINEER

EWING COLE
PLUMBING ENGINEER

EWING COLE
FIRE PROTECTION ENGINEER



CRG
REAL ESTATE SOLUTIONS

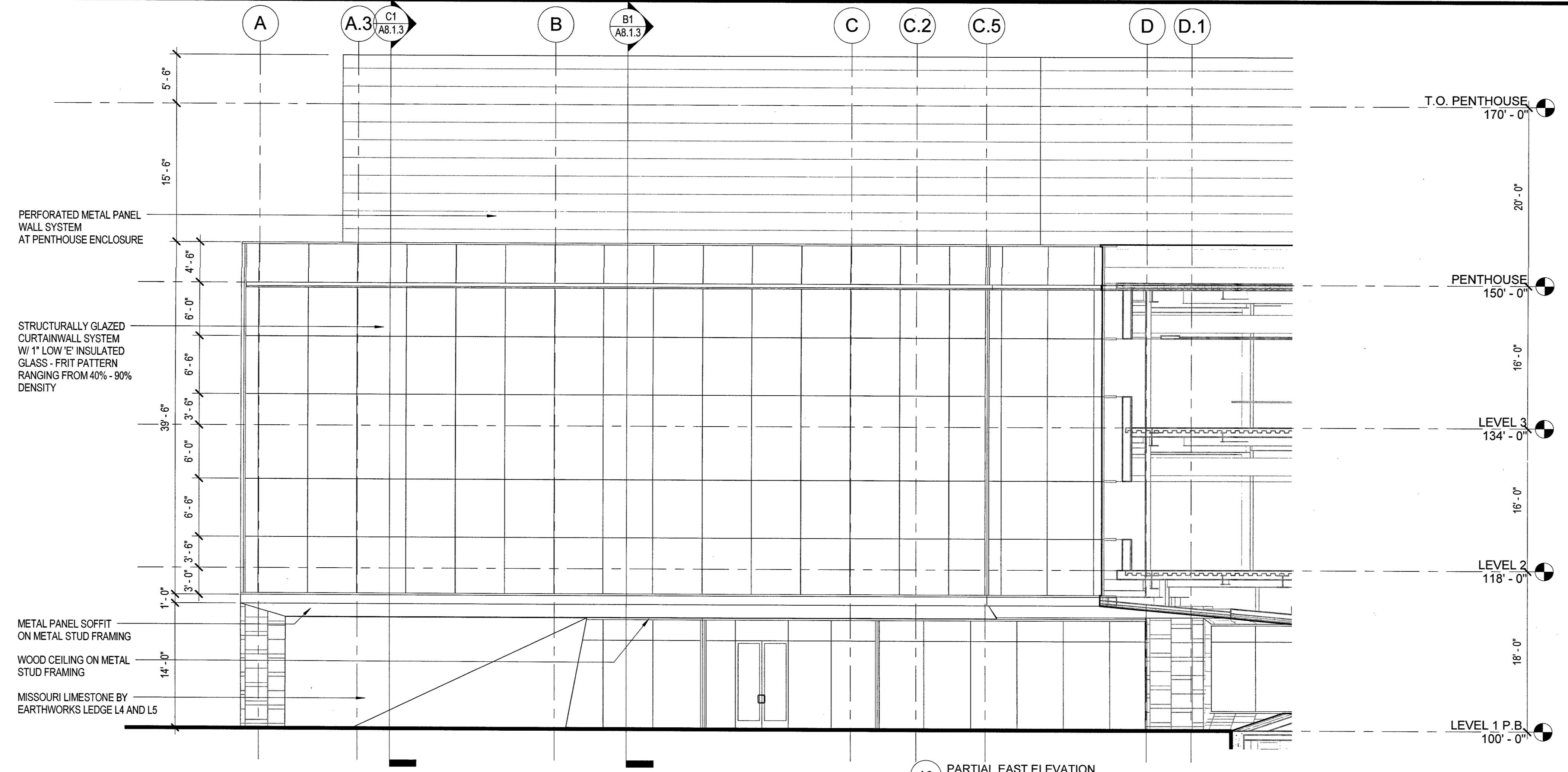
PROJECT FIT

DRAWING ISSUE	
DESCRIPTION	DATE
SCHEMATIC DESIGN	10/14/2016
SDSP	10/21/2016
SDSP RESUBMITTAL	11/23/2016

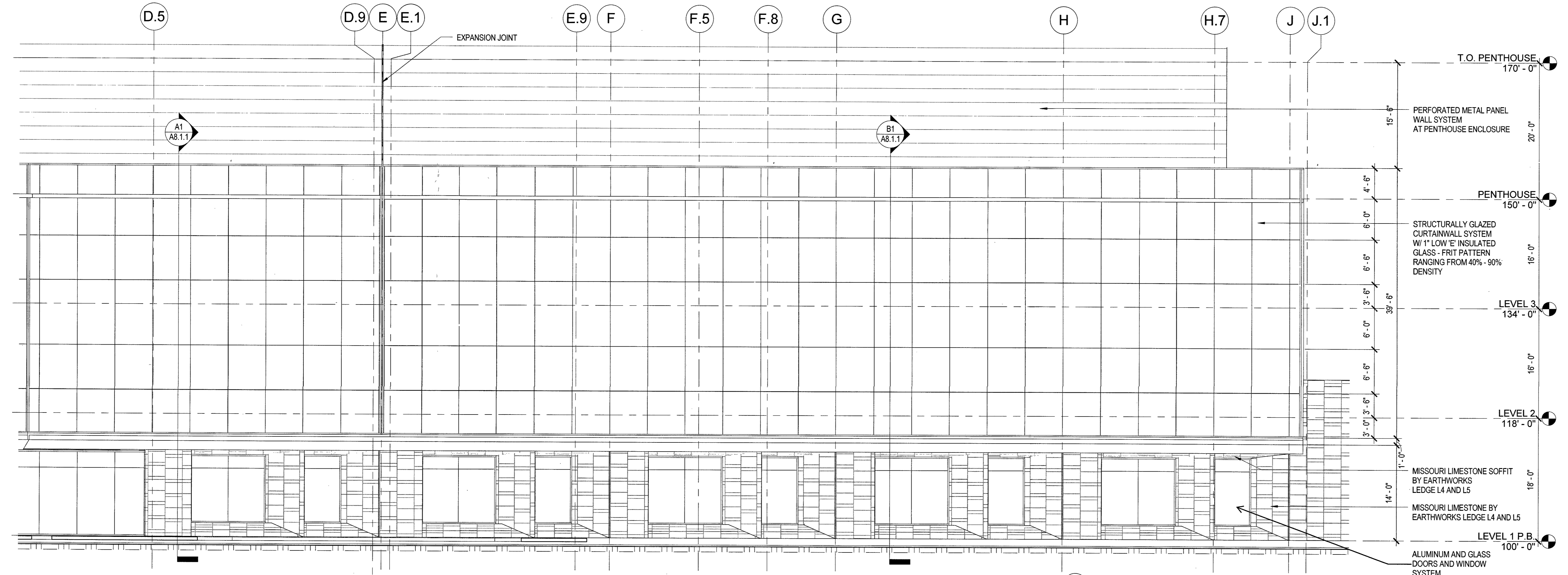
DRAWING TITLE
ENLARGED ELEVATIONS - EAST

DRAWING NO.
A3.1.4

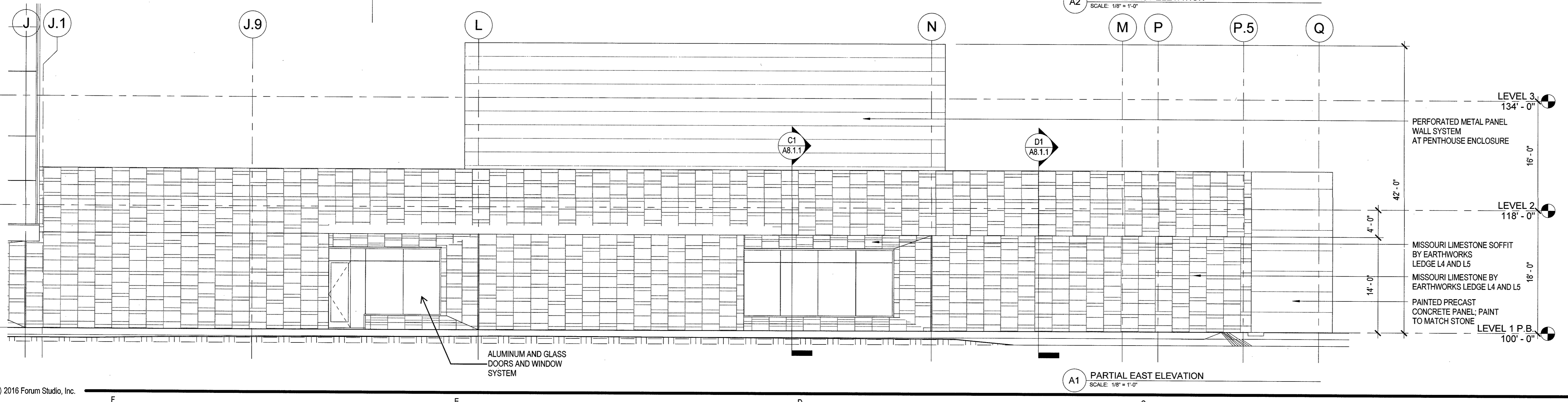
Forum # 691-02696 Consult #



A3 PARTIAL EAST ELEVATION
SCALE: 1/8" = 1'-0"



A2 PARTIAL EAST ELEVATION
SCALE: 1/8" = 1'-0"



A1 PARTIAL EAST ELEVATION
SCALE: 1/8" = 1'-0"

10/20/2016 6:53:27 PM

ELEVATION NOTES

GENERAL NOTES

CLAYCO
THE ART & SCIENCE OF BUILDING
2199 INDEPENDENT BUSINESS CENTER DRIVE
ST. LOUIS, MISSOURI 63114
PH: 314.429.5100 FAX: 314.429.3137

BUILDING DESIGN ARCHITECT
FORUM

2199 INDEPENDENT BUSINESS CENTER DRIVE
ST. LOUIS, MISSOURI 63114
PH: 314.429.5100 FAX: 314.429.3137

LAB DESIGN ARCHITECT
EWING COLE

100 N. 6TH STREET
PHILADELPHIA, PA 19106

CONTRACTOR
CLAYCO

DEVELOPER
CLAYCO REALTY GROUP

LANDSCAPE ARCHITECT
FORUM STUDIO

CIVIL ENGINEER
STOCK & ASSOCIATES

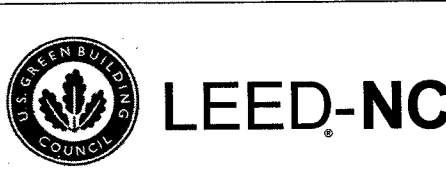
STRUCTURAL ENGINEER
EWING COLE

MECHANICAL ENGINEER
EWING COLE

ELECTRICAL ENGINEER
EWING COLE

PLUMBING ENGINEER
EWING COLE

FIRE PROTECTION ENGINEER
EWING COLE



PROJECT FIT

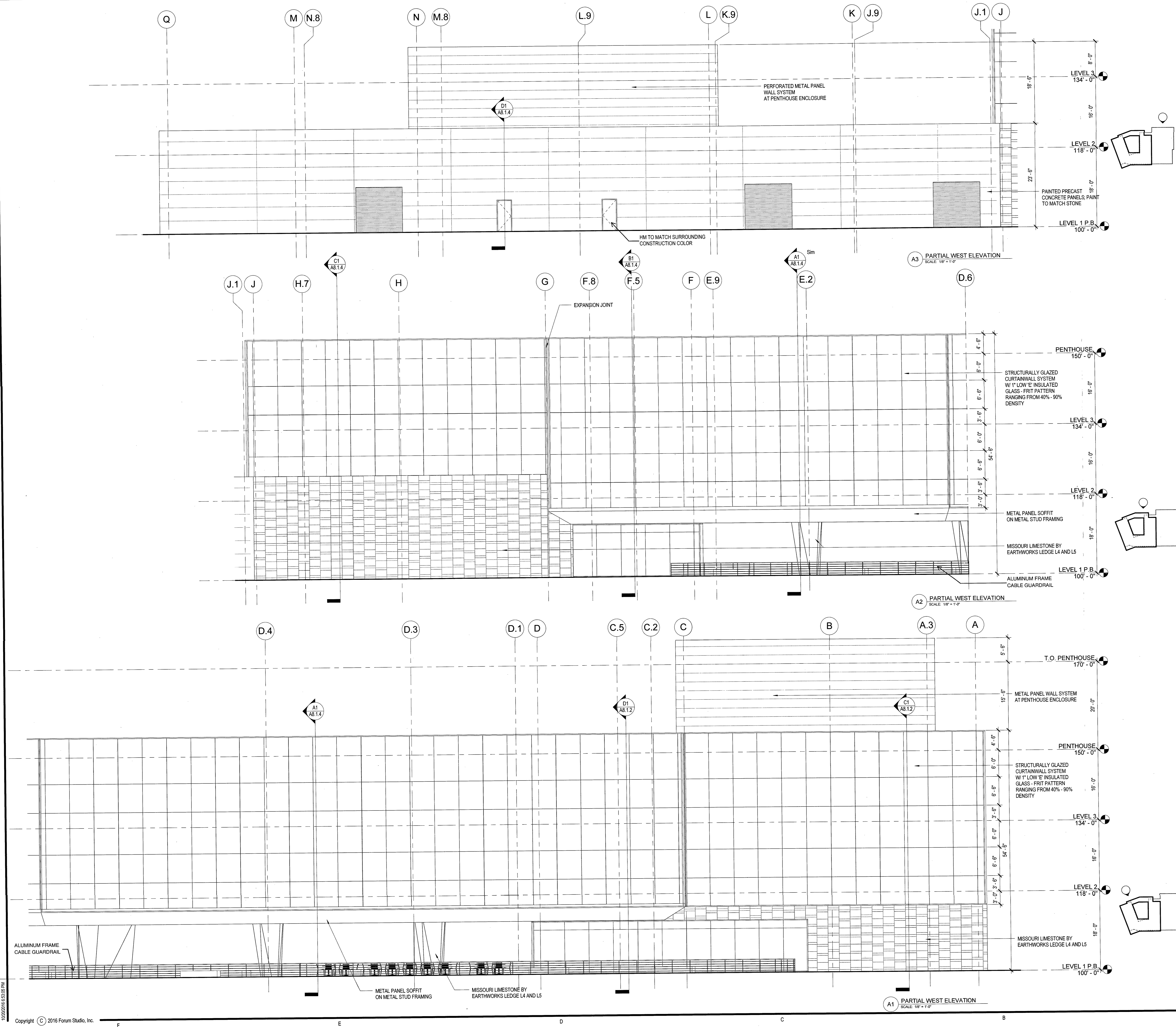
DRAWING ISSUE

DESCRIPTION	DATE
SCHEMATIC DESIGN	10/14/2016
SDSP	10/21/2016
SDSP RESUBMITTAL	11/23/2016

DRAWING TITLE
ENLARGED ELEVATIONS - WEST

DRAWING NO.
A3.15

Forum # 604-02666 Consult #



ELEVATION NOTES

GENERAL NOTES

CLAYCO
THE ART & SCIENCE OF BUILDING
2199 INNERBELT BUSINESS CENTER DRIVE
ST. LOUIS, MISSOURI 63114
PH: 314.426.5100 FX: 314.426.3137

BUILDING DESIGN ARCHITECT
FORUM
2199 INNERBELT BUSINESS CENTER DRIVE
ST. LOUIS, MISSOURI 63114
PH: 314.426.5100 FX: 314.426.3137

LAB DESIGN ARCHITECT
EWING COLE
100 N. 4TH STREET
PHILADELPHIA, PA 19106

CONTRACTOR
CLAYCO

DEVELOPER
CLAYCO REALTY GROUP

LANDSCAPE ARCHITECT
FORUM STUDIO

CIVIL ENGINEER
STOCK & ASSOCIATES

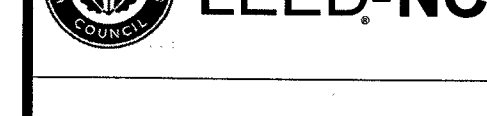
STRUCTURAL ENGINEER
EWING COLE

MECHANICAL ENGINEER
EWING COLE

ELECTRICAL ENGINEER
EWING COLE

PLUMBING ENGINEER
EWING COLE

FIRE PROTECTION ENGINEER
EWING COLE



CRG
REAL ESTATE SOLUTIONS

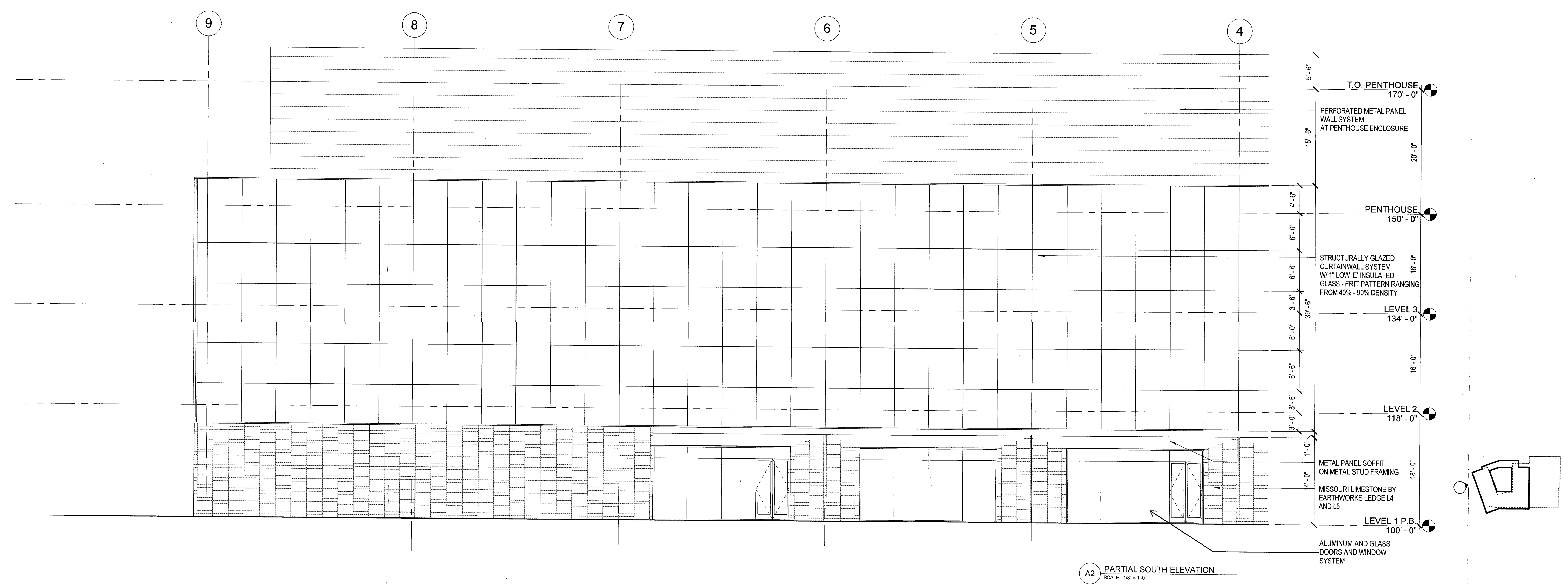
PROJECT FIT

DRAWING ISSUE	
DESCRIPTION	DATE
SCHEMATIC DESIGN	10/14/2016
SDSP	10/21/2016
SDSP RESUBMITTAL	11/23/2016

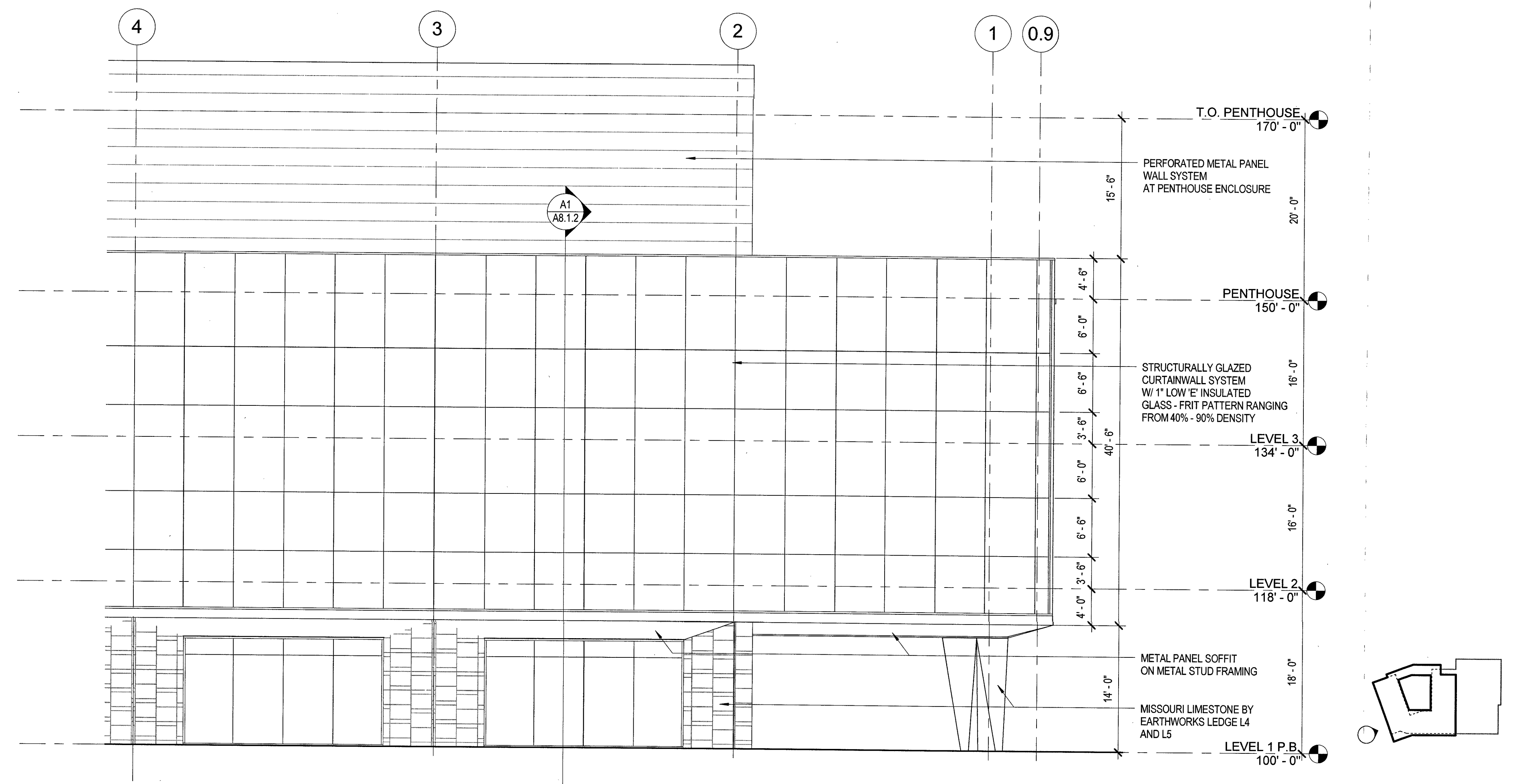
DRAWING TITLE
ENLARGED ELEVATIONS - SOUTH

DRAWING NO.
A3.1.6

Forum # 601-02666 Consult #



A2 PARTIAL SOUTH ELEVATION
SCALE: 1/8" = 1'-0"



A1 PARTIAL SOUTH ELEVATION
SCALE: 1/8" = 1'-0"