

AN ORDINANCE PROVIDING FOR THE APPROVAL OF A BOUNDARY ADJUSTMENT PLAT FOR THE CHURCH OF THE RESURRECTION, A TRACT OF LAND BEING PART OF U.S. SURVEYS 370, 1911, 1978 AND FRACTIONAL SECTIONS 10 AND 15, TOWNSHIP 45 NORTH, RANGE 4 EAST, A 5.23 ACRE TRACT OF LAND ZONED "NU" NON-URBAN DISTRICT, LOCATED ON THE EAST SIDE OF SCHOETTLER ROAD, SOUTH OF ITS INTERSECTION WITH SOUTH OUTER 40 ROAD.

WHEREAS, St. Charles Engineering and Surveying, Inc., on behalf of The Church of the Resurrection, has submitted for review and approval a boundary adjustment plat for two parcels located on the east side of Schoettler Road, south of its intersection with South Outer 40 Road; and,

WHEREAS, the purpose of said Boundary Adjustment Plat is to adjust the boundary line between Parcel 1 and Parcel 2, consolidating the two parcels; and,

WHEREAS, the City of Chesterfield has reviewed the Boundary Adjustment Plat in accordance with the Subdivision Ordinance of the City of Chesterfield and has found it to be in compliance with all applicable ordinances and has forwarded said Boundary Adjustment Plat to the City Council.

NOW THEREFORE BE IT ORDAINED BY THE CITY COUNCIL OF THE CITY OF CHESTERFIELD, ST. LOUIS COUNTY, MISSOURI, AS FOLLOWS:

Section 1. The Boundary Adjustment Plat for The Church of the Resurrection, which is made a part hereof and attached hereto as Exhibit 1, is hereby approved; the owner is directed to record the plat with the St. Louis County Recorder of Deeds Office.

Section 2. The Mayor and City Clerk are authorized and directed to evidence the approval of the said Boundary Adjustment Plat by affixing their signatures and the official seal of the City of Chesterfield as required on said document.

Section 3. This Ordinance shall be in full force and effect from and after its passage and approval.

Passed and approved this _____ day of _____, 2010.

Mayor

ATTEST:

CITY CLERK

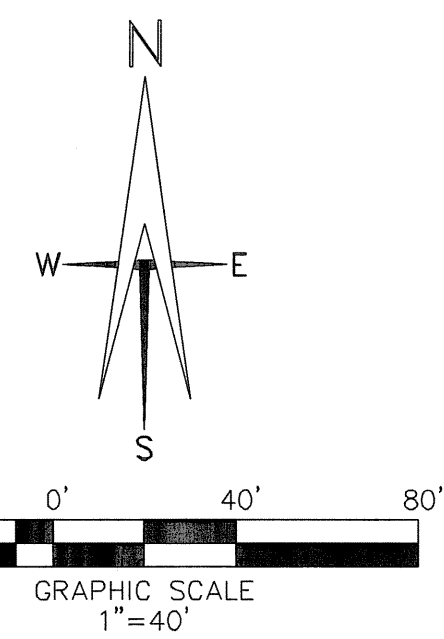
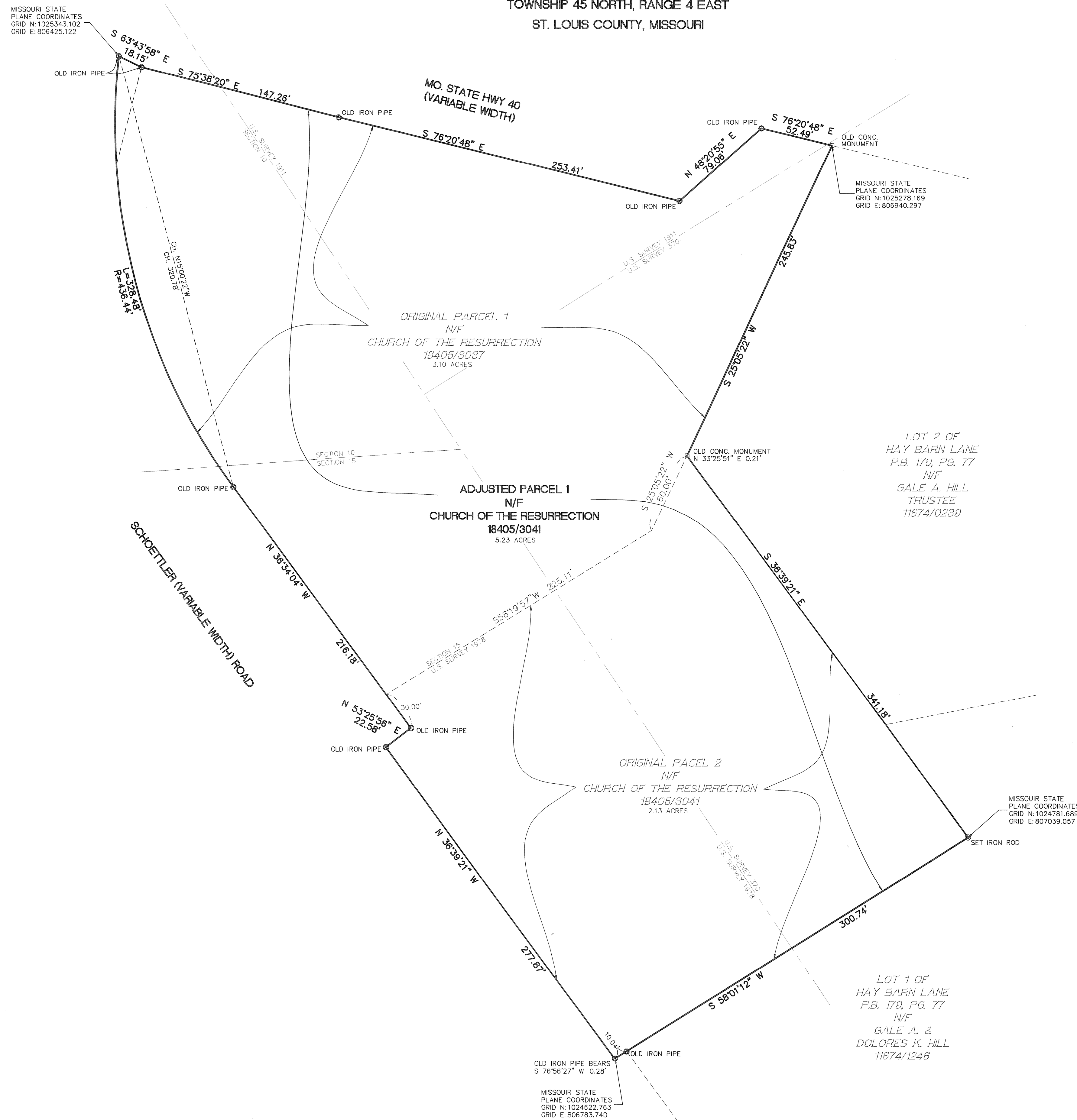
BOUNDARY ADJUSTMENT PLAT OF

A TRACT OF LAND BEING PART OF U.S. SURVEY'S 370, 1911, 1978

AND FRACTIONAL SECTIONS 10 AND 15,

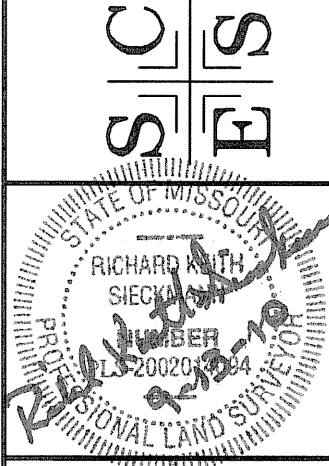
TOWNSHIP 45 NORTH, RANGE 4 EAST

ST. LOUIS COUNTY, MISSOURI



BOUNDARY ADJUSTMENT PLAT OF
 A TRACT OF LAND BEING PART OF U.S. SURVEY'S 370, 1911, 1978
 AND FRACTIONAL SECTIONS 10 AND 15,
 TOWNSHIP 45 NORTH, RANGE 4 EAST
 ST. LOUIS COUNTY, MISSOURI

SIC ST. CHARLES ENGINEERING & SURVEYING, INC.
 801 S. FIFTH STREET, SUITE 202
 ST. CHARLES, MO 63301
 TEL: (636) 947-0607 FAX: (636) 947-2448



ORDER NO.
100109

DATE
04/16/10

2 OF 2