

BILL NO. 2687

ORDINANCE NO. \_\_\_\_\_

**AN ORDINANCE PROVIDING FOR THE APPROVAL OF A BOUNDARY ADJUSTMENT PLAT FOR ST. LUKE'S HOSPITAL NORTHWEST, FOR A 35.807 ACRE TRACT OF LAND ZONED "MU" MEDICAL USE DISTRICT LOCATED TO THE NORTHWEST OF THE INTERSECTION OF CONWAY ROAD AND WOODS MILL ROAD.**

**WHEREAS**, St. Luke's Episcopal Presbyterian Hospitals, has submitted for review and approval the Boundary Adjustment Plat for a 35.807 acre tract of land zoned "MU" Medical Use District located to the northwest of the intersection of Conway Road and Woods Mill Road; and,

**WHEREAS**, the purpose of said Boundary Adjustment Plat is to remove lot lines to consolidate the property into one parcel; and,

**WHEREAS**, the City of Chesterfield has reviewed the Boundary Adjustment Plat in accordance with the Subdivision Ordinance of the City of Chesterfield and have found it to be in compliance with all applicable ordinances and has forwarded said Boundary Adjustment Plat to the City Council.

**NOW THEREFORE BE IT ORDAINED BY THE CITY COUNCIL OF THE CITY OF CHESTERFIELD, ST. LOUIS COUNTY, MISSOURI, AS FOLLOWS:**

Section 1. The Boundary Adjustment Plat for St. Luke's Hospital Northwest, which is made a part hereof and attached hereto as Exhibit 1, is hereby approved; the owner is directed to record the plat with the St. Louis County Recorder of Deeds Office.

Section 2. The Mayor and City Clerk are authorized and directed to evidence the approval of the said Boundary Adjustment Plat by affixing their signatures and the official seal of the City of Chesterfield as required on the said document.

Section 3. This Ordinance shall be in full force and effect from and after its passage and approval.

Passed and approved this \_\_\_\_\_ day of \_\_\_\_\_, 2008.

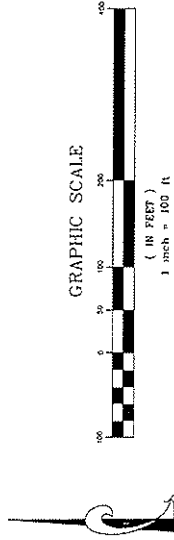
\_\_\_\_\_  
MAYOR

ATTEST:

\_\_\_\_\_  
CITY CLERK

# "ST. LUKE'S HOSPITAL NORTHWEST"

A BOUNDARY ADJUSTMENT PLAT OF A TRACT OF LAND BEING ADJUSTED LOT A AND ADJUSTED LOT B OF 'SEEGER SUBDIVISION LOT A AND LOT B BOUNDARY ADJUSTMENT' AS RECORDED IN PLAT BOOK 302, PAGE 24 AND A TRACT OF LAND LOCATED IN U.S. SURVEY 109 AND PART OF SECTION 7 TOWNSHIP 45 NORTH, RANGE 4 AND 5 EAST OF THE 5TH PRINCIPAL MERIDIAN CITY OF CHESTERFIELD, ST. LOUIS COUNTY, MISSOURI  
 ZONING 'MU' MEDICAL USE DISTRICT ORD. 2224 AND 2499



STATE PLANE COORDINATE TABLE

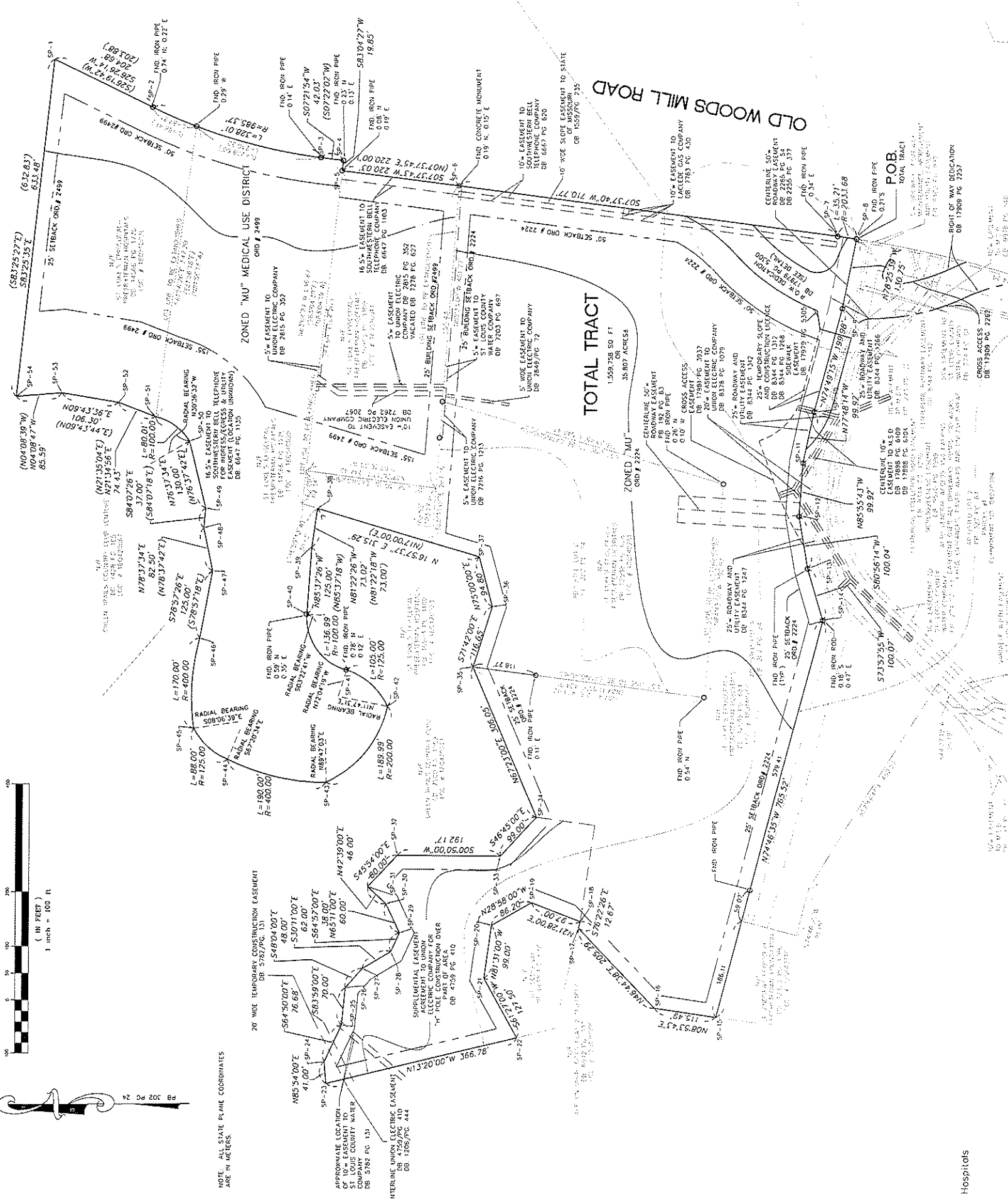
NORTHING	EASTING
SP-1	249,103.445
SP-2	249,103.445
SP-3	249,103.445
SP-4	249,103.445
SP-5	249,103.445
SP-6	249,103.445
SP-7	249,103.445
SP-8	249,103.445
SP-9	249,103.445
SP-10	249,103.445
SP-11	249,103.445
SP-12	249,103.445
SP-13	249,103.445
SP-14	249,103.445
SP-15	249,103.445
SP-16	249,103.445
SP-17	249,103.445
SP-18	249,103.445
SP-19	249,103.445
SP-20	249,103.445
SP-21	249,103.445
SP-22	249,103.445
SP-23	249,103.445
SP-24	249,103.445
SP-25	249,103.445
SP-26	249,103.445
SP-27	249,103.445
SP-28	249,103.445
SP-29	249,103.445
SP-30	249,103.445
SP-31	249,103.445
SP-32	249,103.445
SP-33	249,103.445
SP-34	249,103.445
SP-35	249,103.445
SP-36	249,103.445
SP-37	249,103.445
SP-38	249,103.445
SP-39	249,103.445
SP-40	249,103.445
SP-41	249,103.445
SP-42	249,103.445
SP-43	249,103.445
SP-44	249,103.445
SP-45	249,103.445
SP-46	249,103.445
SP-47	249,103.445
SP-48	249,103.445
SP-49	249,103.445
SP-50	249,103.445
SP-51	249,103.445
SP-52	249,103.445
SP-53	249,103.445
SP-54	249,103.445

NOTE: ALL STATE PLANE COORDINATES ARE IN METERS.

20' WIDE TEMPORARY CONSTRUCTION EASEMENT DB 5782 PC 131

APPROXIMATE LOCATION OF 10' EASEMENT TO ST. LOUIS COUNTY WATER DB 5782 PC 131

CENTRALINE UNION ELECTRIC EASEMENT DB 1286 PC 444

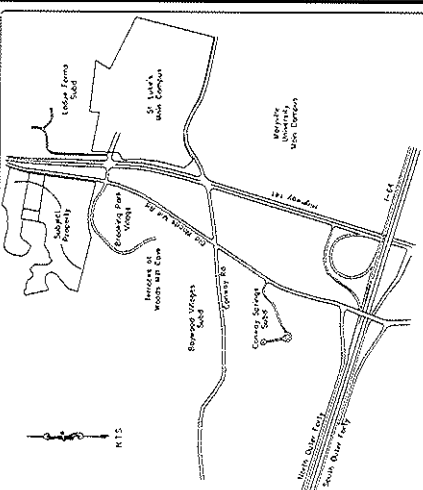


**LEGEND**

- FOUND 1/2" IRON PIPE
- SET IRON PIPE
- ✕ FOUND CROSS
- ⊕ DEMONSTRATED
- ⊖ DEMONSTRATED

**ABBREVIATIONS**

- DB - DEED BOOK
- FD - FIELD
- N/P - NOW OR FORMERLY
- PC - PAGE BOOK
- P.O.B. - POINT OF BEGINNING
- S.O.C. - SOUTH OF COMMENCEMENT
- (86%) - RIGHT-OF-WAY WIDTH



- (10) REVISED 11/19/08 - NEW ZONING ORDINANCE
- (11) REVISED 11/17/08 - ZONING AND SETBACK INFORMATION PER CITY COMMENTS
- (12) REVISED 11/17/08 - ZONING AND SETBACK INFORMATION PER ORD # 2224
- (13) REVISED 11/17/08 - ZONING AND SETBACK INFORMATION PER ORD # 2499
- (14) REVISED 11/17/08 - ZONING AND SETBACK INFORMATION PER ORD # 2224
- (15) REVISED 11/17/08 - ZONING AND SETBACK INFORMATION PER ORD # 2499
- (16) REVISED 11/17/08 - ZONING AND SETBACK INFORMATION PER ORD # 2224
- (17) REVISED 11/17/08 - ZONING AND SETBACK INFORMATION PER ORD # 2499

**"ST. LUKE'S HOSPITAL NORTHWEST"**  
 BOUNDARY ADJUSTMENT PLAT

**STOCK & ASSOCIATES**  
 Consulting Engineers, Inc.

257 Chesterfield Business Parkway  
 St. Louis, MO 63105  
 PH: (636) 658-3000  
 FAX: (636) 658-3000  
 e-mail: general@stockassoc.com  
 Web: www.stockassoc.com

DATE: 5/19/08  
 D.M.L. 5/19/08  
 204-3314.21  
 1 of 2

PREPARED FOR:  
 St. Luke's Episcopal Presbyterian Hospitals  
 232 South Woods Mill Road  
 Chesterfield, MO 63017  
 Phone: (314) 205-6800  
 Fax: (314) 205-6824

